



#MoodNolitaPattern



Print only this page first to check accuracy.
The Mood square above should measure 2 inches. Print "actual size" in "portrait" mode (not auto center). Formatted for both US Letter & A4 paper sizes.

Formatted for both
US Letter & A4 Paper

Trimless Option:

This is the fastest! No trimming needed! Place left-side margins over right-side margins, overlapping dashed lines and dots. In the same fashion, top margins will overlap bottom margins. Slight unprinted gaps are normal for this method.

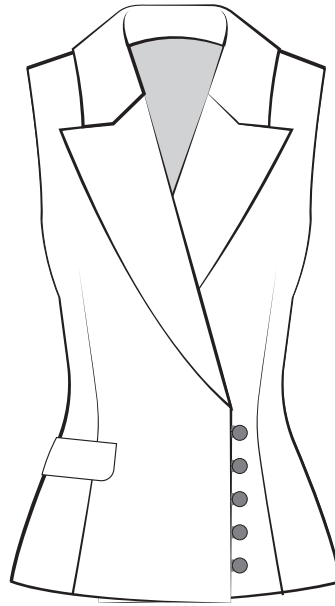
Trimmed Option:

This removes any unprinted gaps. Trim along the top and right margins at the dashed lines. Overlap the trimmed margins to the untrimmed margins, matching dashed lines and dots.

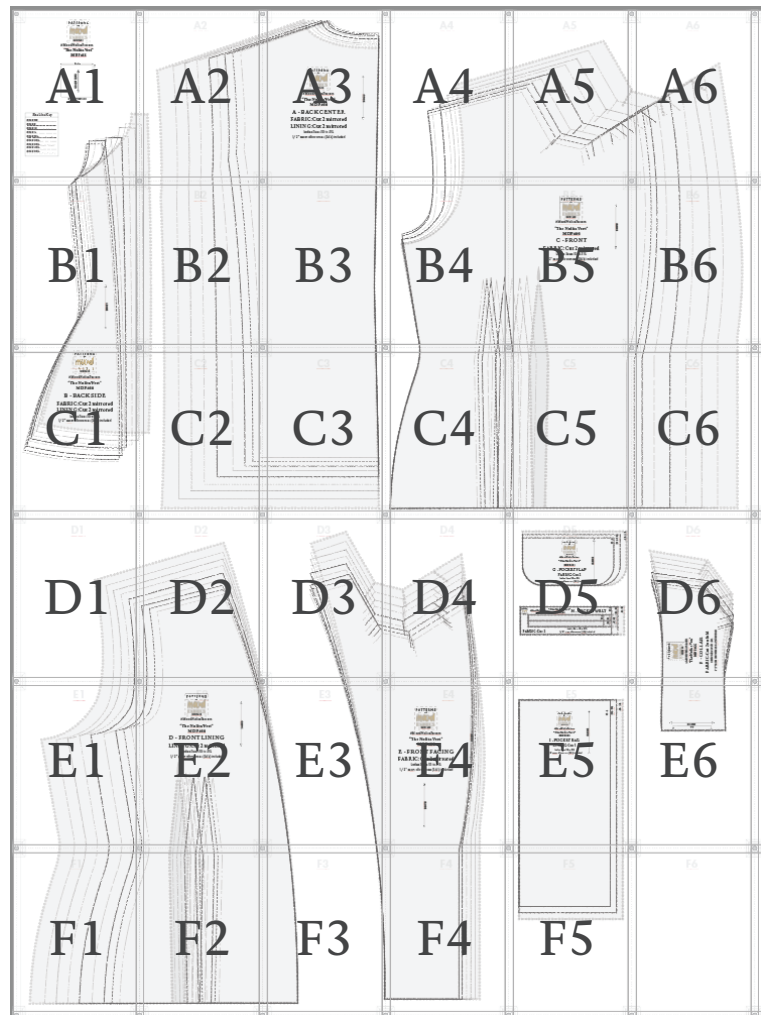
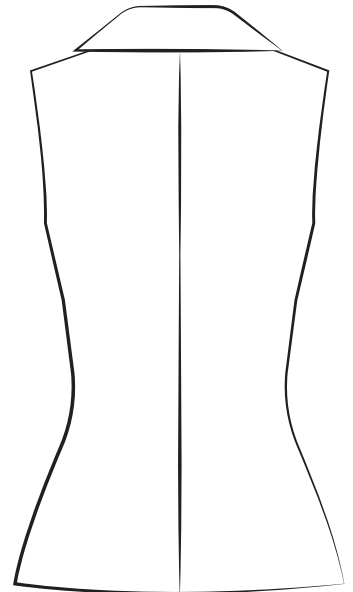
Tip! Build rows first, then join the rows together as you go.

"The Nolita Vest"

Front



Back



MDF466 - "The Nolita Vest"

Ladies Sizes XS to 5XL

BODY MEASUREMENTS - IN INCHES (Chart 1)

SIZE	XS	S	M	L	XL	2XL	3XL	4XL	5XL
BUST	31 - 32	33 - 34	25 - 36	37 - 39	40 - 43	44 - 47	48 - 51	52 - 55	56 - 60
WAIST	23 - 24	25 - 26	27 - 28	29 - 31	32 - 35	36 - 39	40 - 43	44 - 47	48 - 52
HIPS	34 - 35	36 - 37	38 - 39	40 - 42	43 - 46	47 - 50	51 - 54	55 - 58	60 - 63

APPROXIMATE FINISHED GARMENT MEASUREMENTS - IN INCHES (Chart 2)

SIZE	XS	S	M	L	XL	2XL	3XL	4XL	5XL
BUST	35.5	37.5	39.5	42.5	46.5	50.5	54.5	58.5	63.5
WAIST	30	32	34	37	41	45	49	53	58
HIPS	41.5	43.5	45.5	48.5	52.5	56.5	60.5	64.5	69.5

Size guide is based on the suggested design & wearing ease for this style. You can also choose the size according to your desired finished garment measurements, blending between sizes as needed. Measure the printed patterns to make sure the dimensions are according to the desired fitting and adjust if needed before cutting the fabric. For best results sew a test garment in a similar fabric to adjust your pattern.

Recommended Fabric: Main Fabric: Sateen, Tweed, Suiting Fabrics.
Lining: Polyester.

We love creating these free patterns for the community and we want to keep them free! In return, we hope you check out MoodFabrics.com for your next project!

Want to use one of our patterns to make a garment to sell? Our patterns are royalty-free! We just ask that you credit us with:
MoodSewciety.com
or
MoodFabrics.com
in your product description.

FOR SEWING INSTRUCTIONS
AND MORE INFORMATION:

Scan the QR code or visit
MoodSewciety.com and search
"MDF466"



1/2" seam allowances (SA's) included
unless stated otherwise.

REMEMBER TO SHARE YOUR
MADE WITH MOOD LOOK!

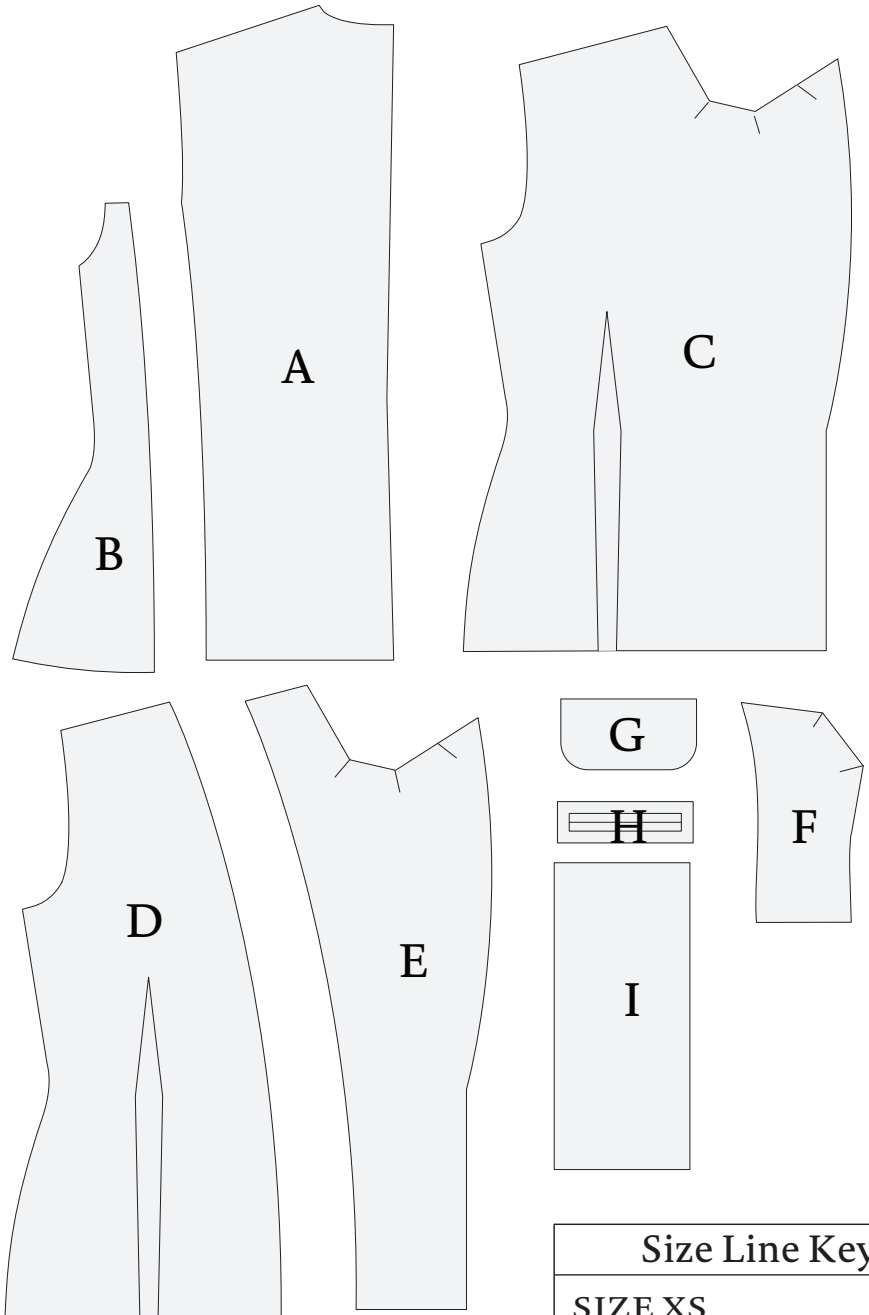
Tag us and use:
#MoodNolitaPattern
for a shot at being featured on our
social media

- @mood.fabrics
- @moodfabrics
- @Mood_Fabrics
- @moodfabrics
- @moodfabrics



“The Nolita Vest” PATTERN PIECES

A	BACK CENTER FABRIC - CUT 2 MIRRORED LINING - CUT 2 MIRRORED
B	BACK SIDE FABRIC - CUT 2 MIRRORED LINING - CUT 2 MIRRORED
C	FRONT FABRIC - CUT 2 MIRRORED
D	FRONT LINING LINING - CUT 2 MIRRORED
E	FRONT FACING FABRIC - CUT 2 MIRRORED
F	COLLAR FABRIC - CUT 2 ON FOLD
G	POCKET FLAP FABRIC - CUT 2
H	POCKET WELT FABRIC - CUT 2
I	POCKET BAG LINING - CUT 1



Placement of welt pocket:

2 inches below the smallest part of waist,
and centered on the front dart.

Button loops:

Cut a bias strip of fabric 2 inches wide
and 15 inches long. (These dimensions
include a 3/4-inch seam allowance.)

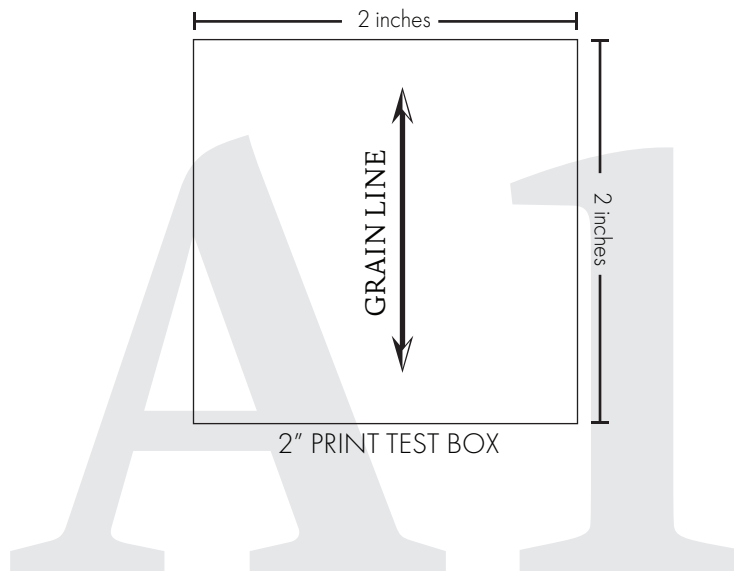
Trim the seam allowance and divide in
5 pieces of 3 inches length each.

Size Line Key

SIZE XS
SIZE S
SIZE M
SIZE L
SIZE XL
SIZE 2XL
SIZE 3XL
SIZE 4XL
SIZE 5XL

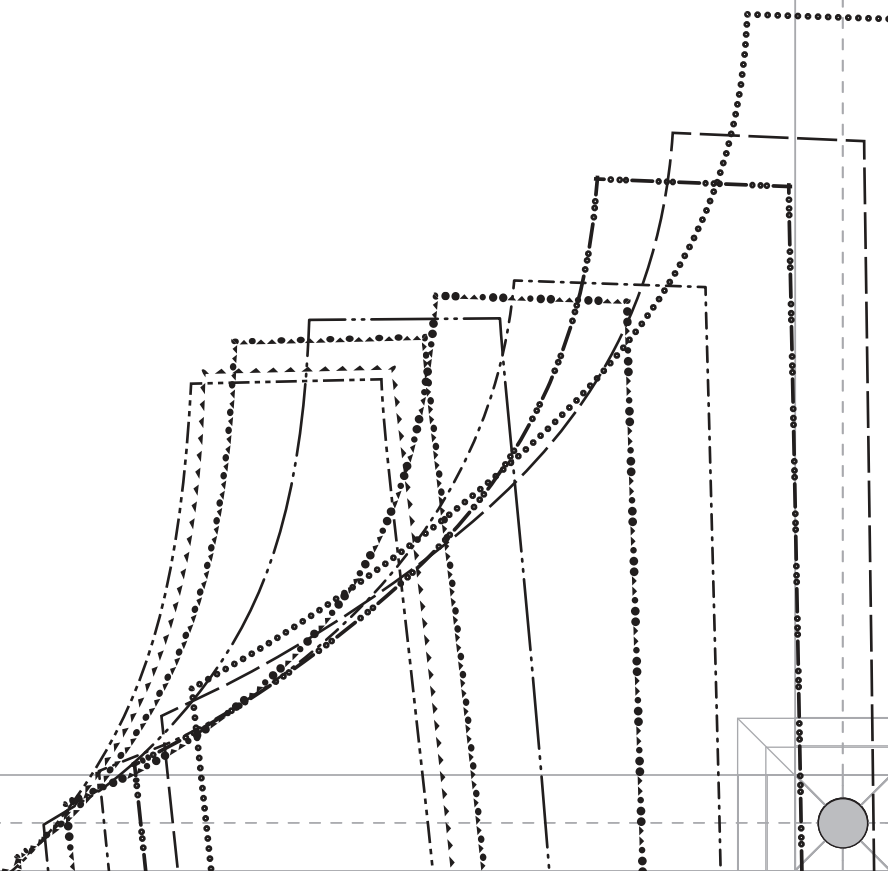


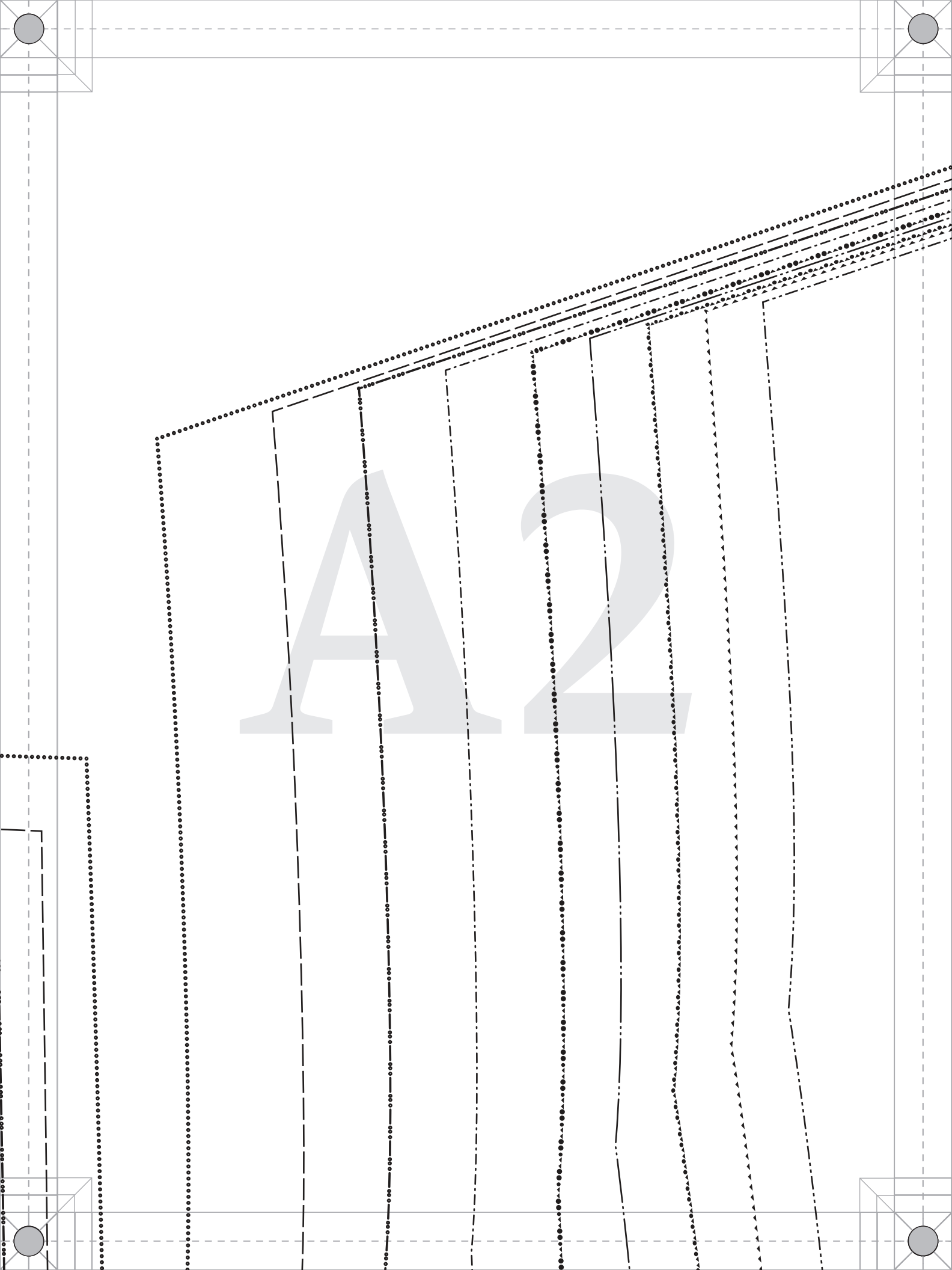
#MoodNolitaPattern
“The Nolita Vest”
MDF466



Size Line Key

SIZE XS	-----
SIZE S	- - - - -
SIZE M
SIZE L	-----
SIZE XL
SIZE 2XL	-----
SIZE 3XL
SIZE 4XL	-----
SIZE 5XL







PATTERNS

BY

mood

FABRICS

MDF466

#MoodNolitaPattern

“The Nolita Vest”

MDF466

A - BACK CENTER

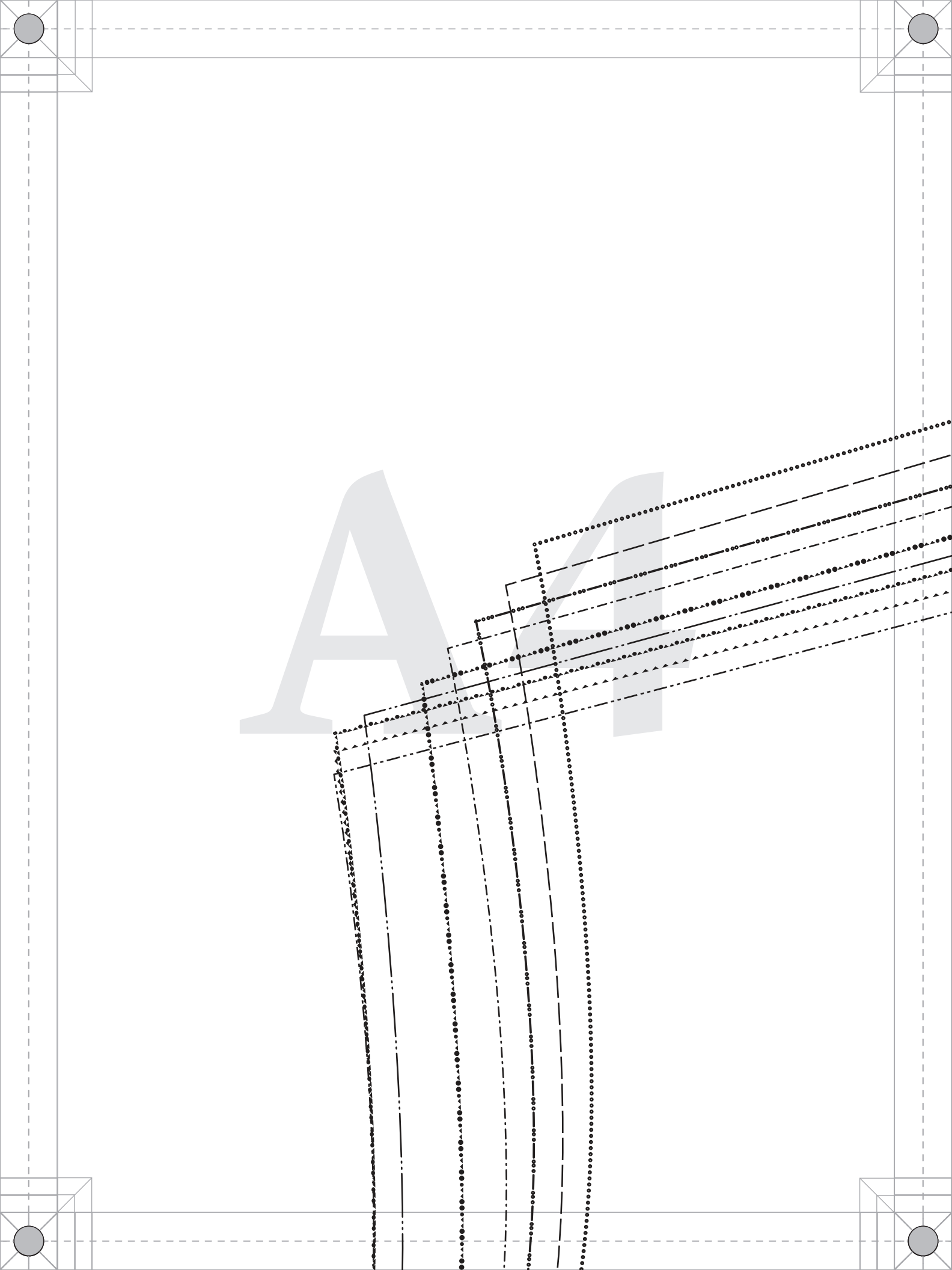
FABRIC: Cut 2 mirrored

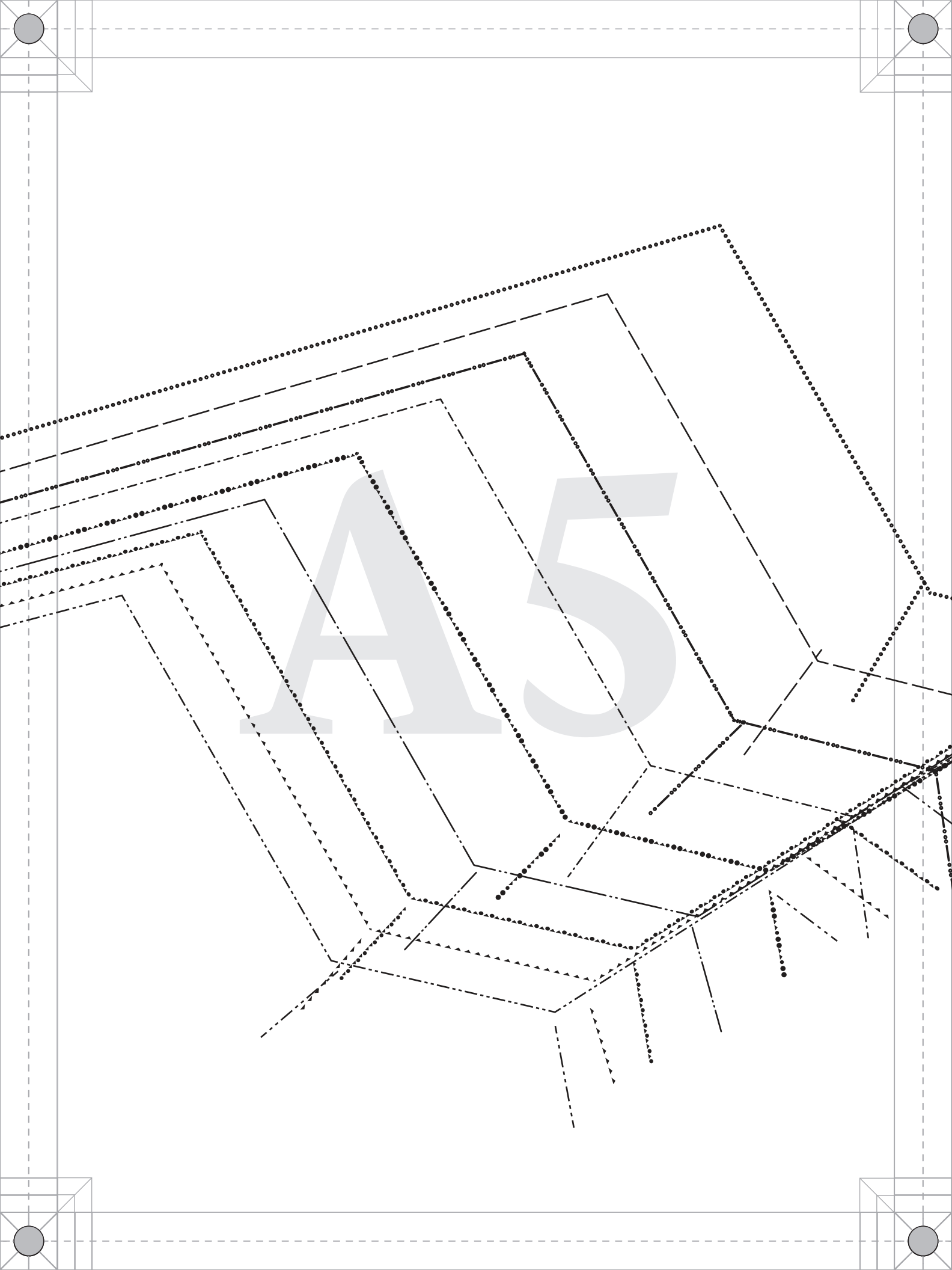
LINING: Cut 2 mirrored

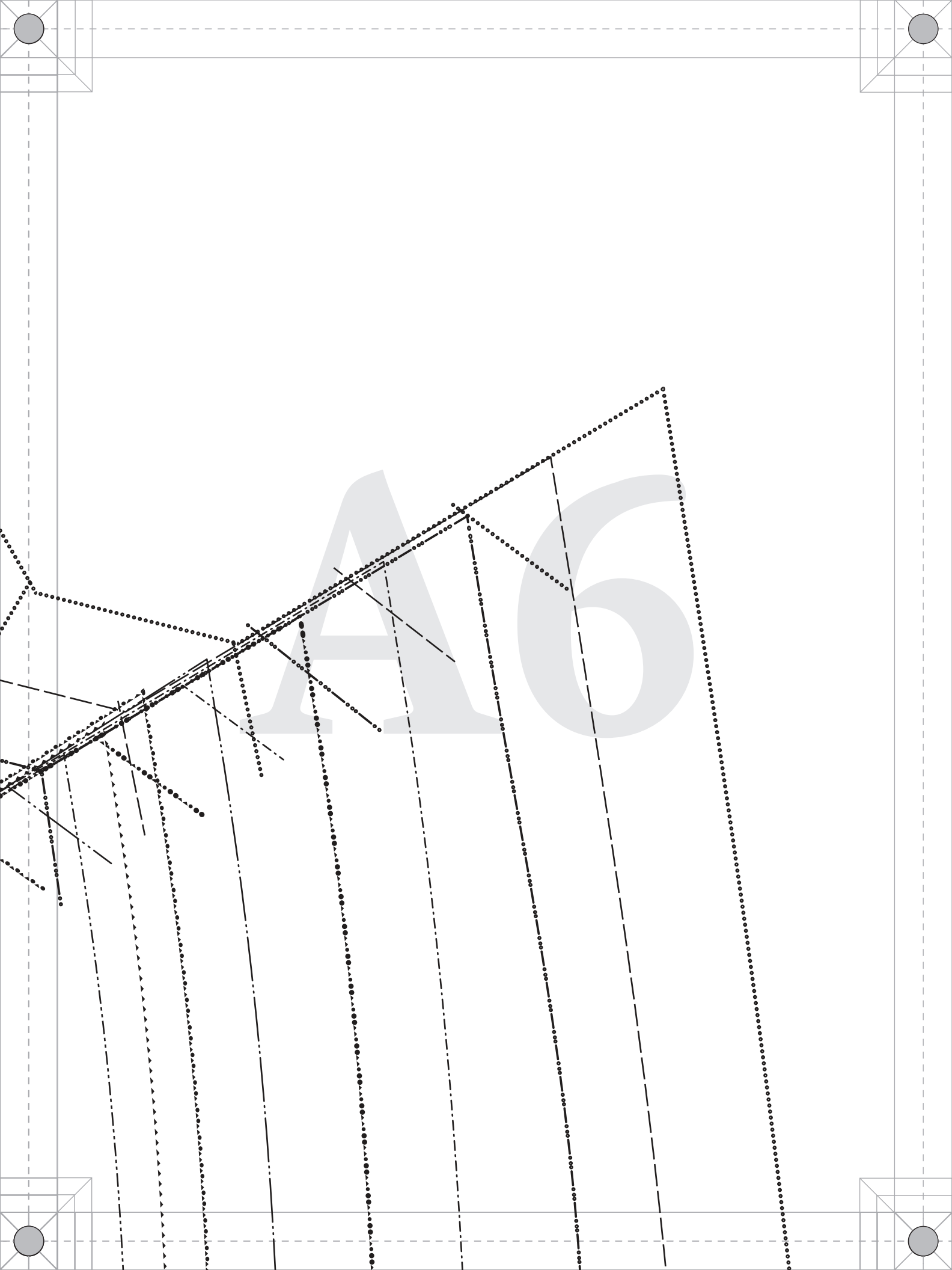
Ladies Sizes XS to 5XL

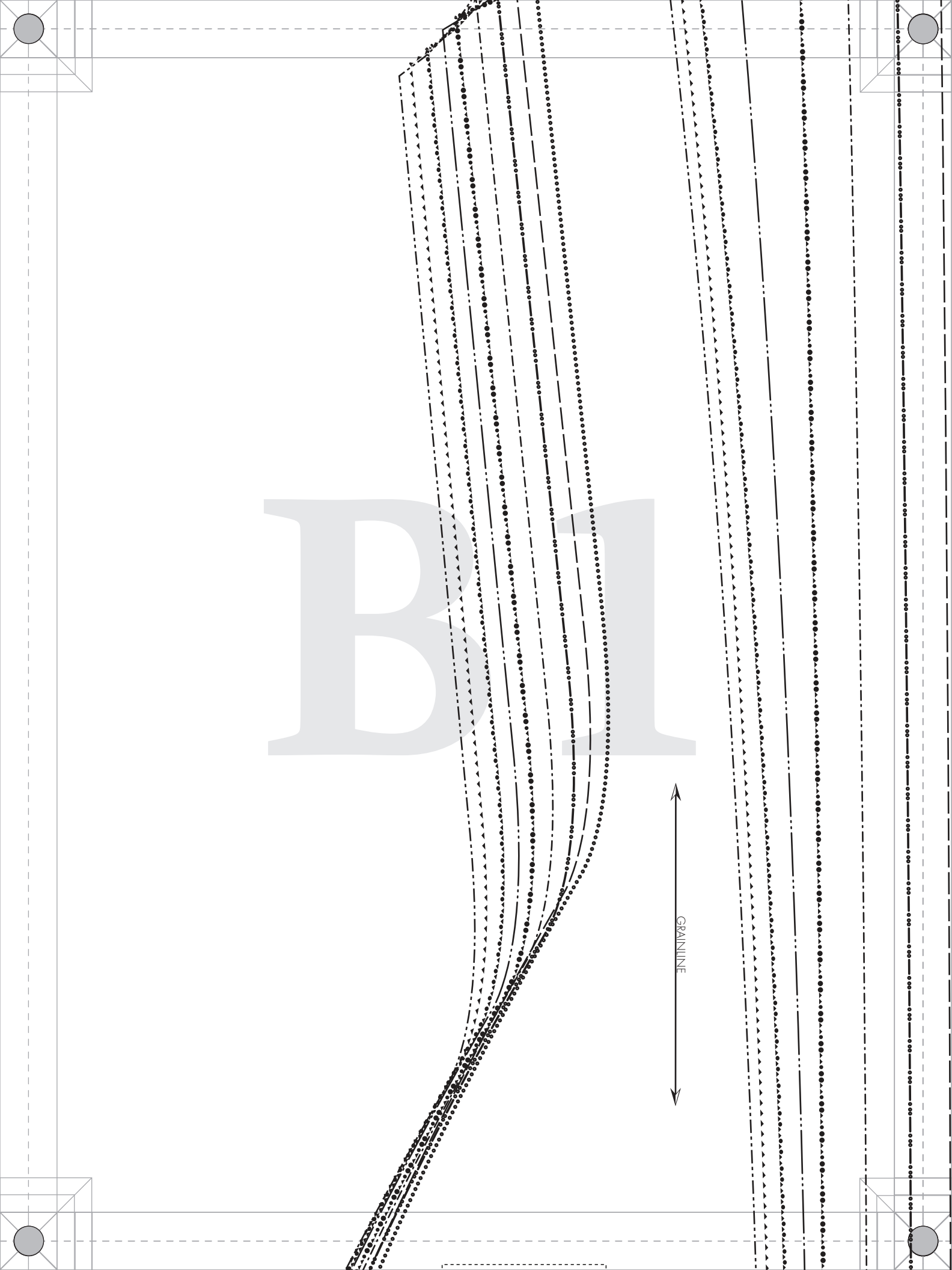
1/2" seam allowances (SA's) included

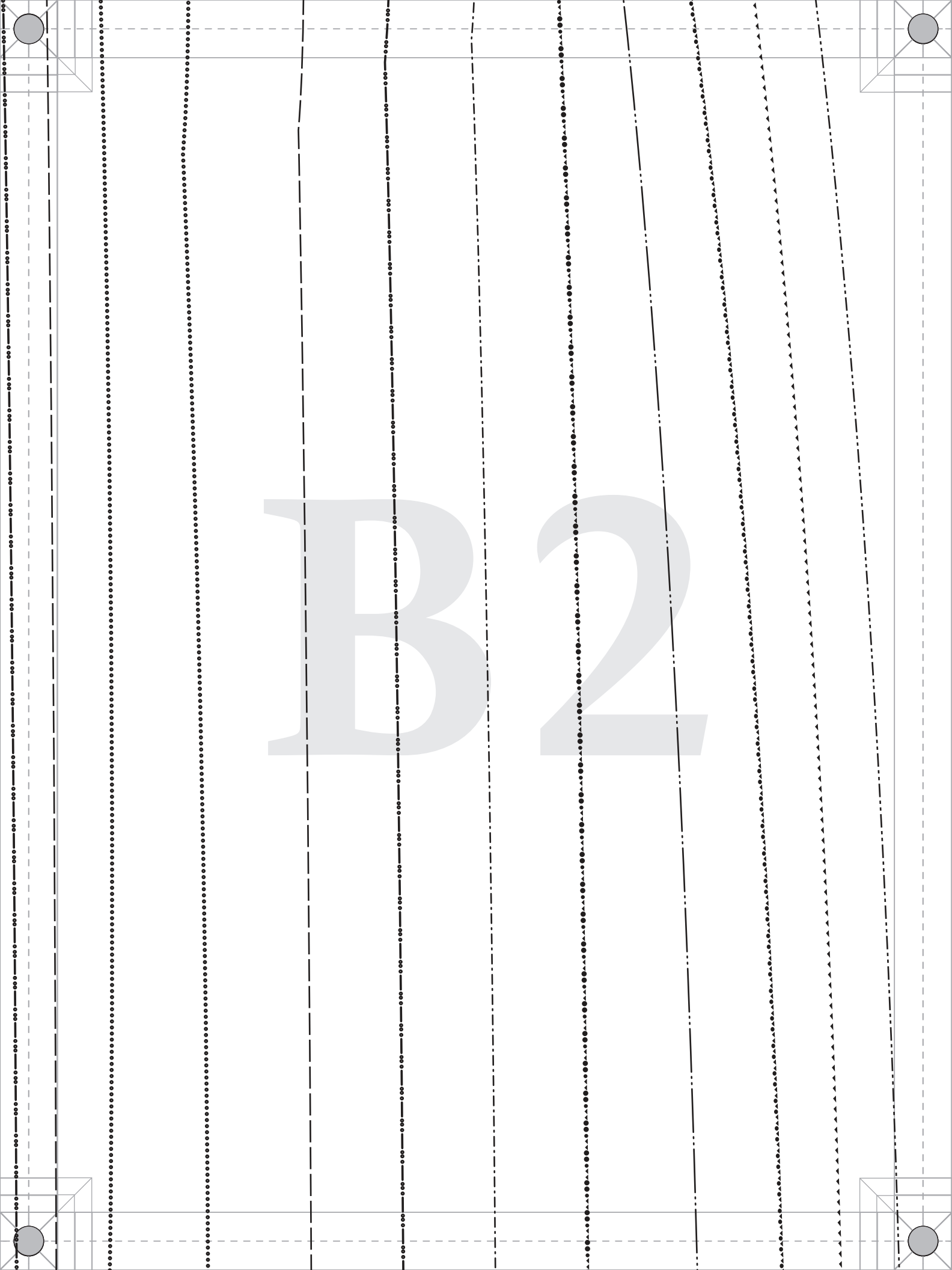
GRAINLINE



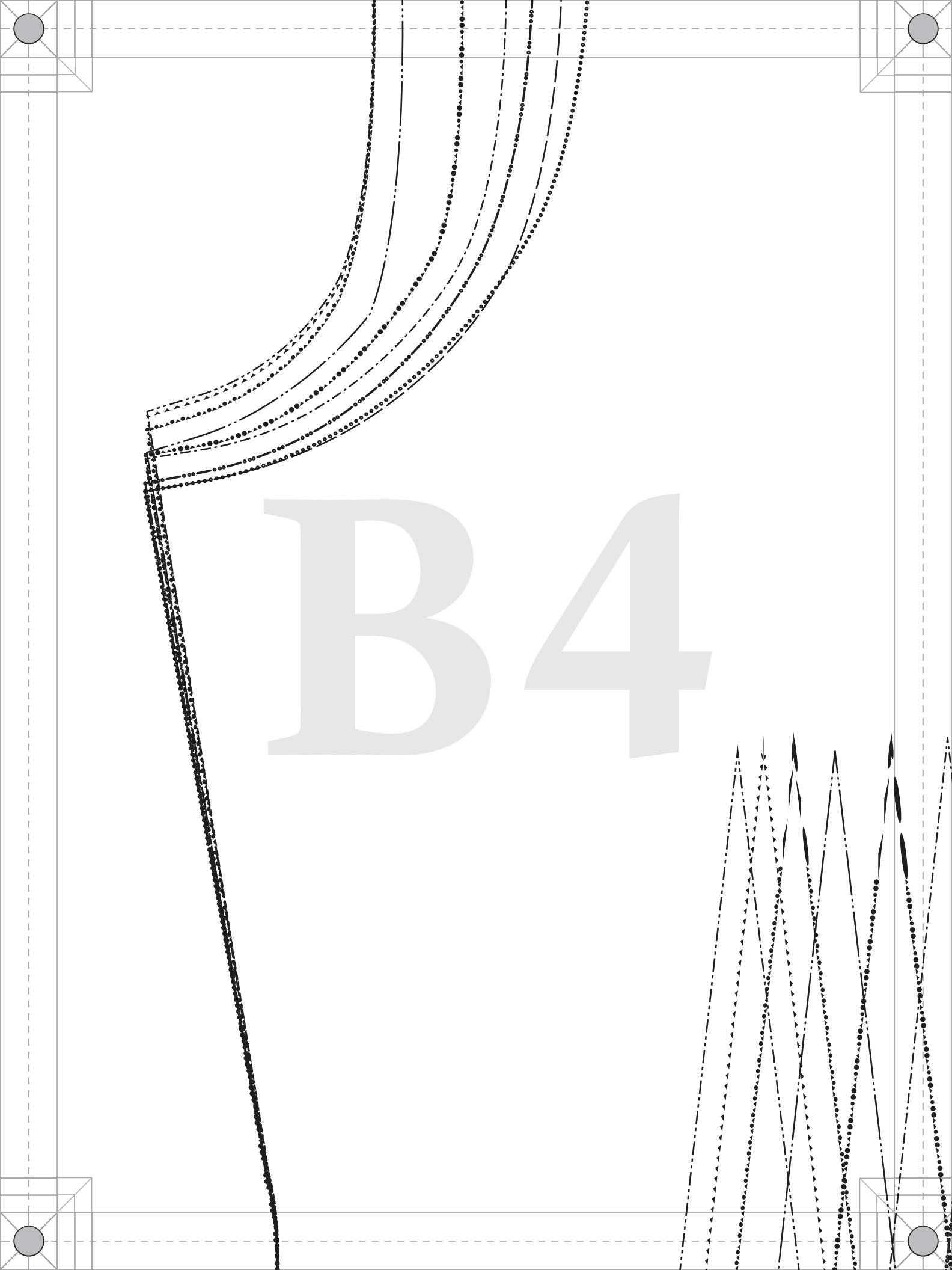








B3



PATTERNS

BY

mood

FABRICS

MDF466

#MoodNolitaPattern

“The Nolita Vest”

MDF466

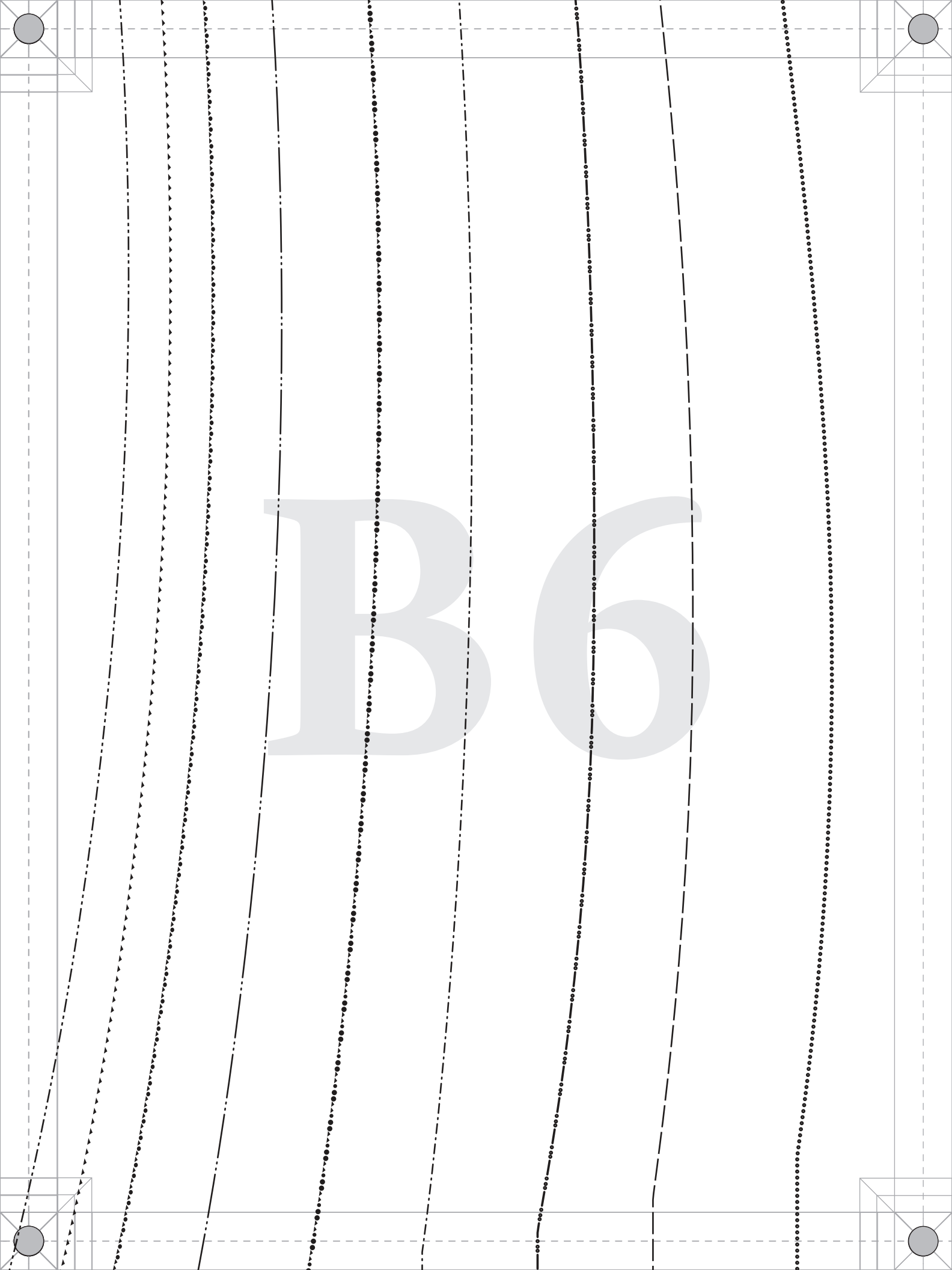
C - FRONT

FABRIC: Cut 2 mirrored

Ladies Sizes XS to 5XL

1/2" seam allowances (SA's) included

GRAINLINE



PATTERNS
BY
mood
FABRICS
MDF466

#MoodNolitaPattern

**“The Nolita Vest”
MDF466**

B - BACK SIDE

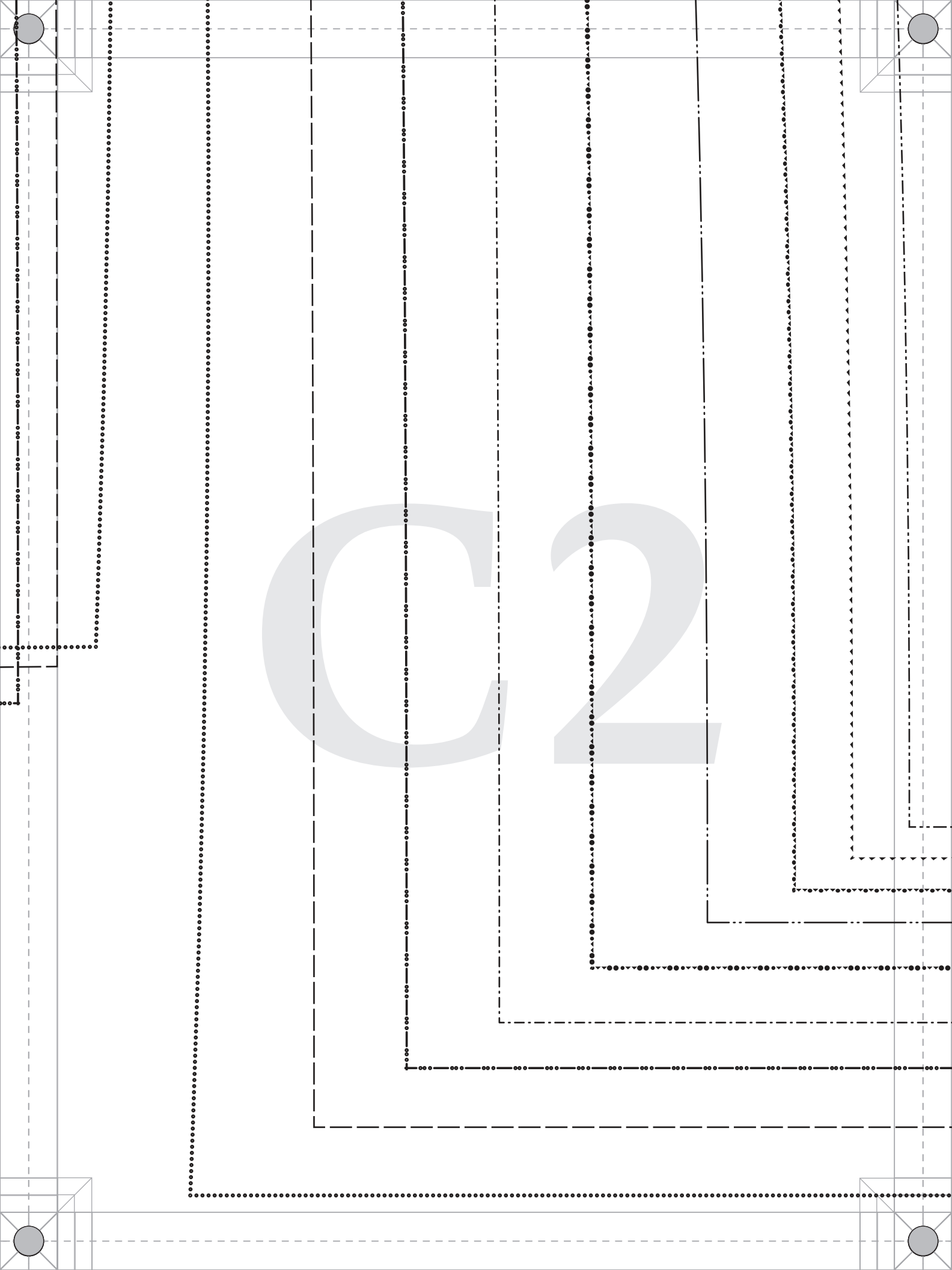
FABRIC: Cut 2 mirrored

LINING: Cut 2 mirrored

Ladies Sizes XS to 5XL

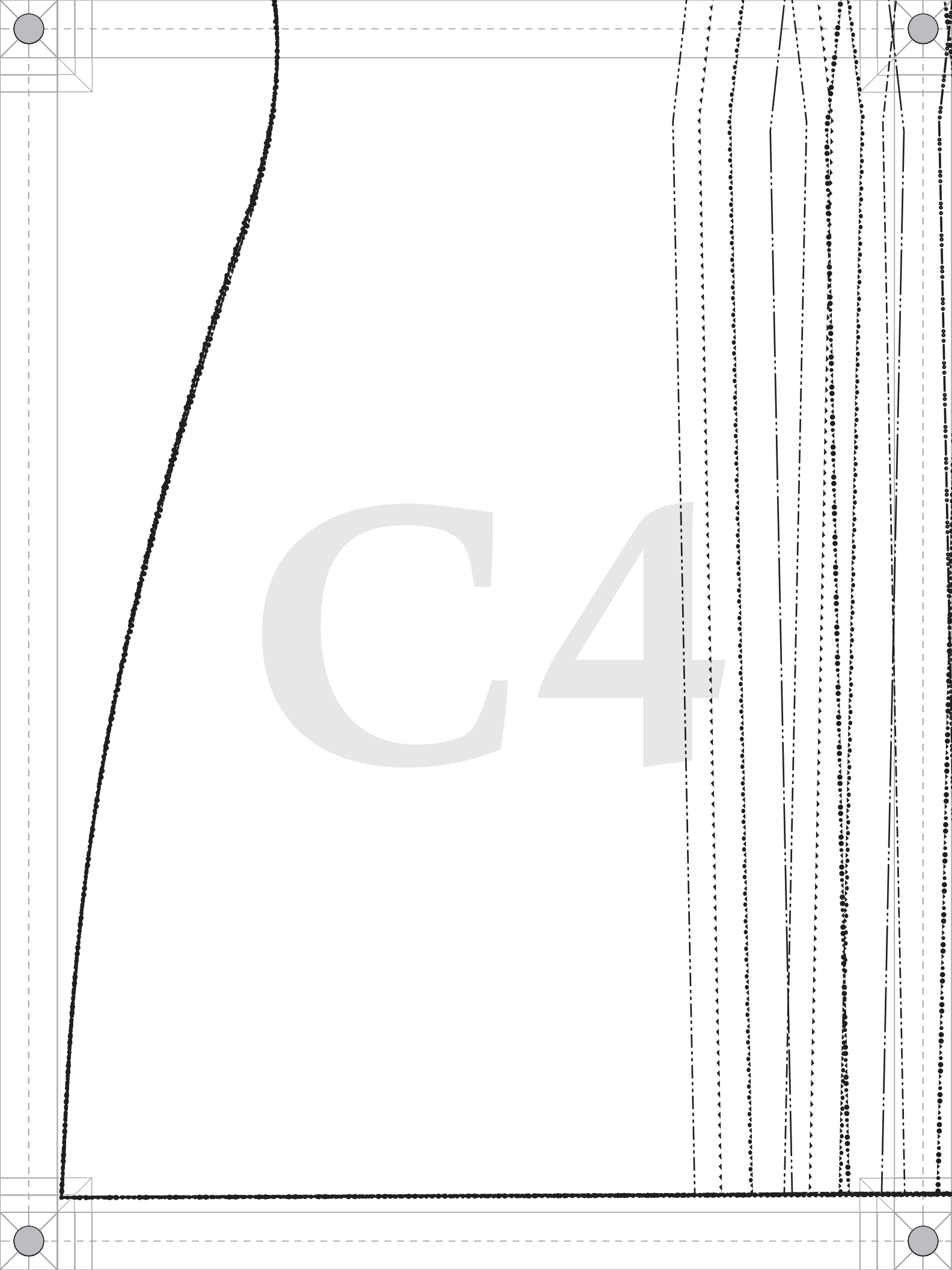
1/2" seam allowances (SA's) included

Shorten the lining pieces by half inch.

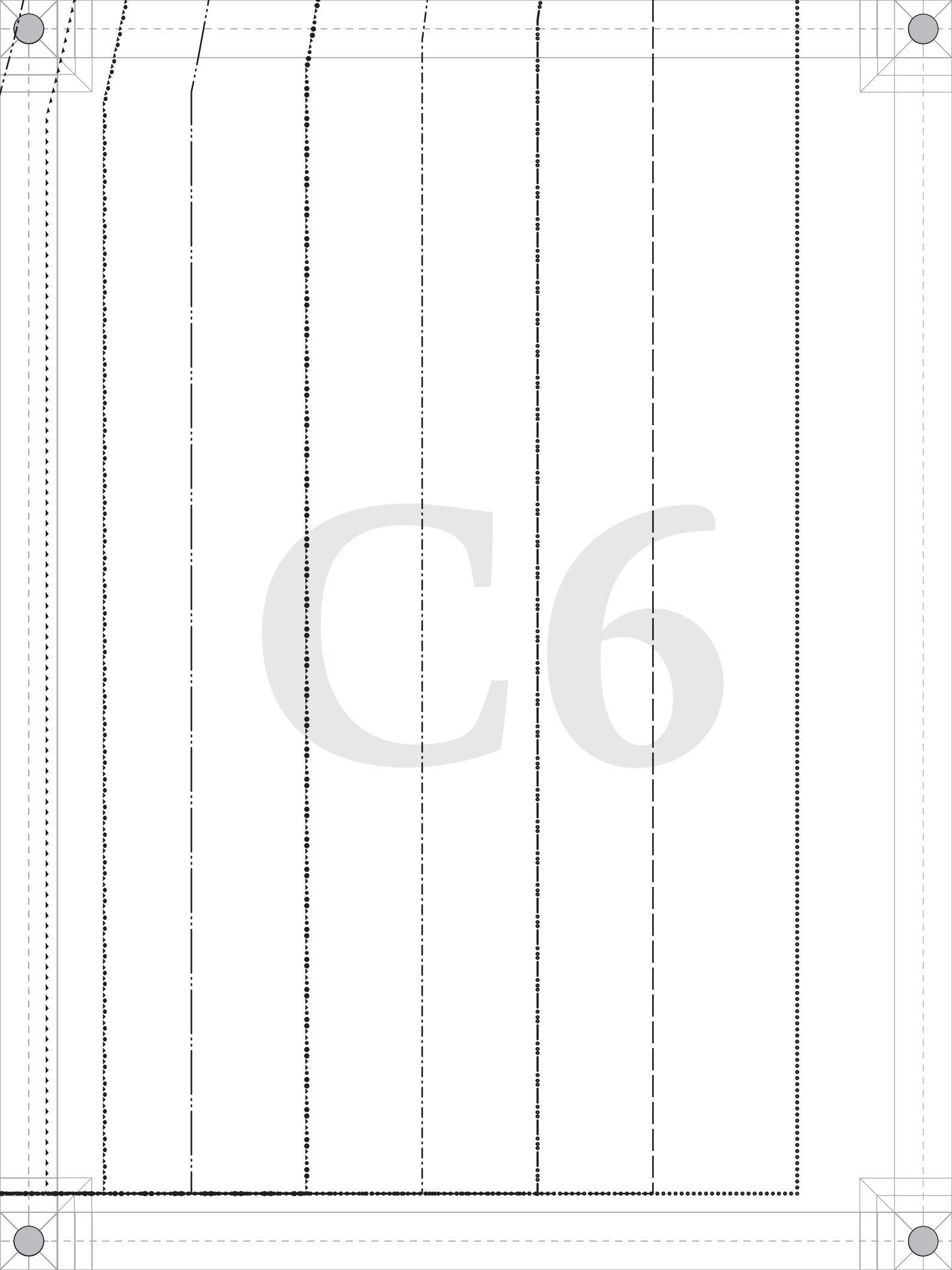


C3

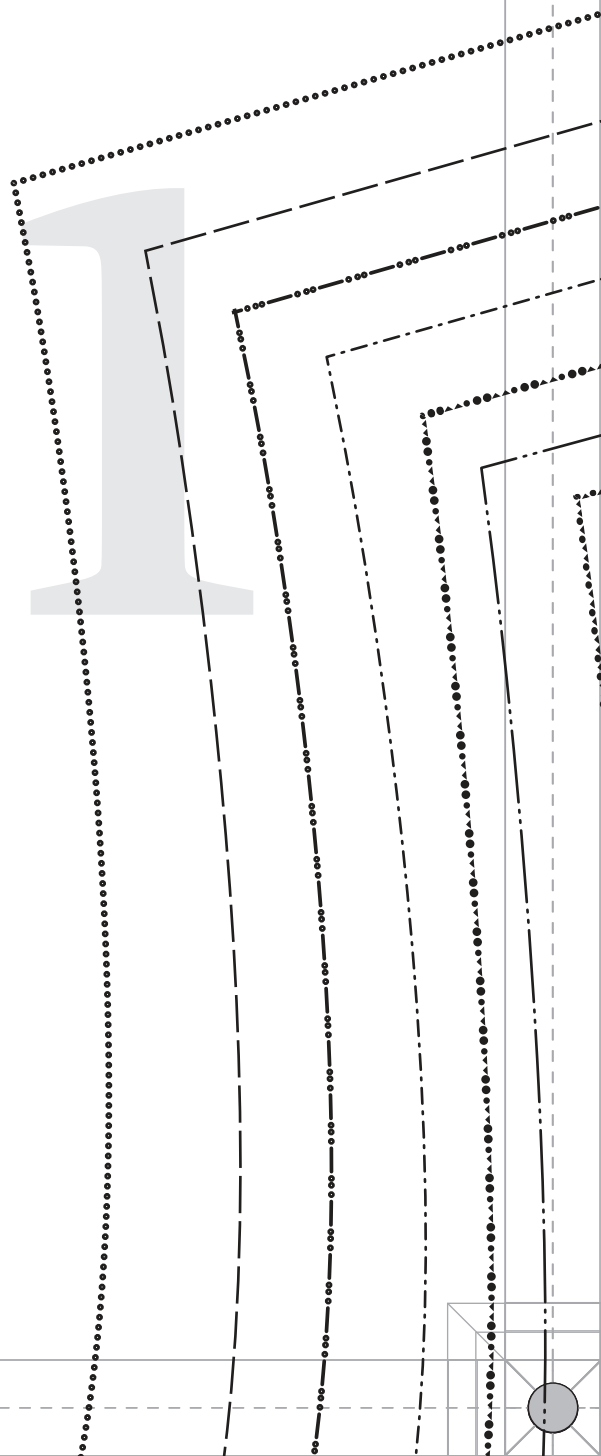
Shorten the lining pieces by half inch.

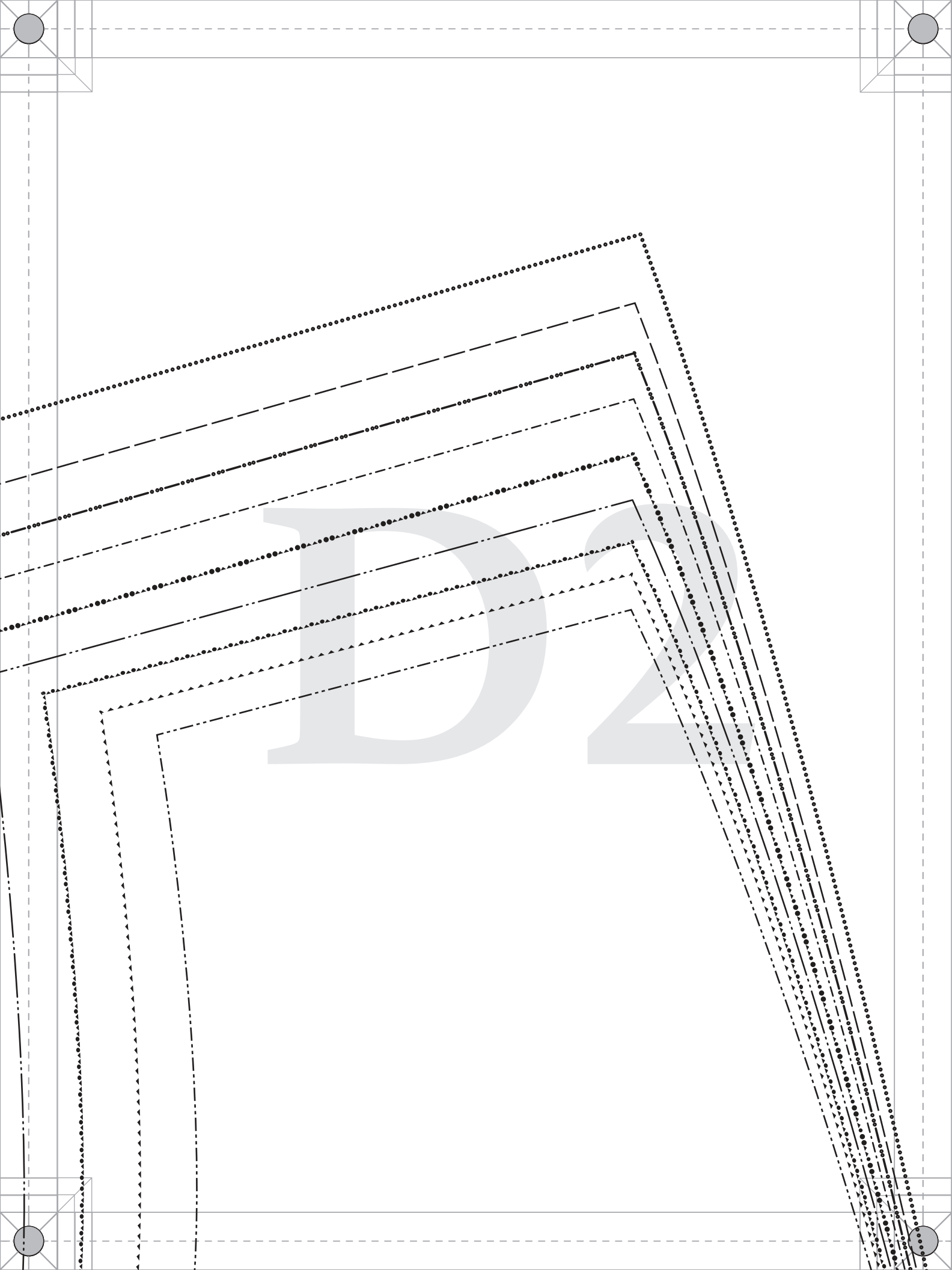


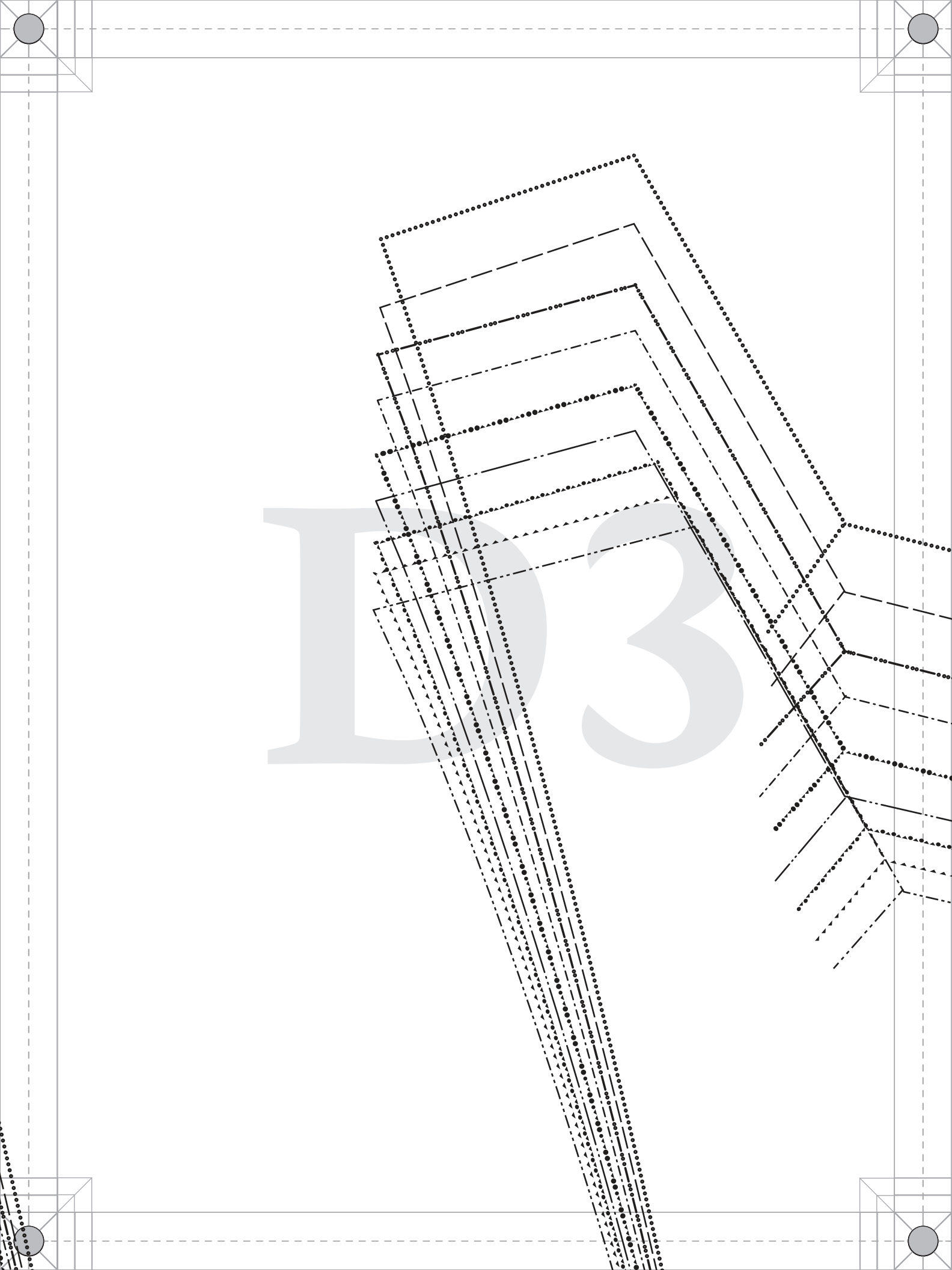
C5

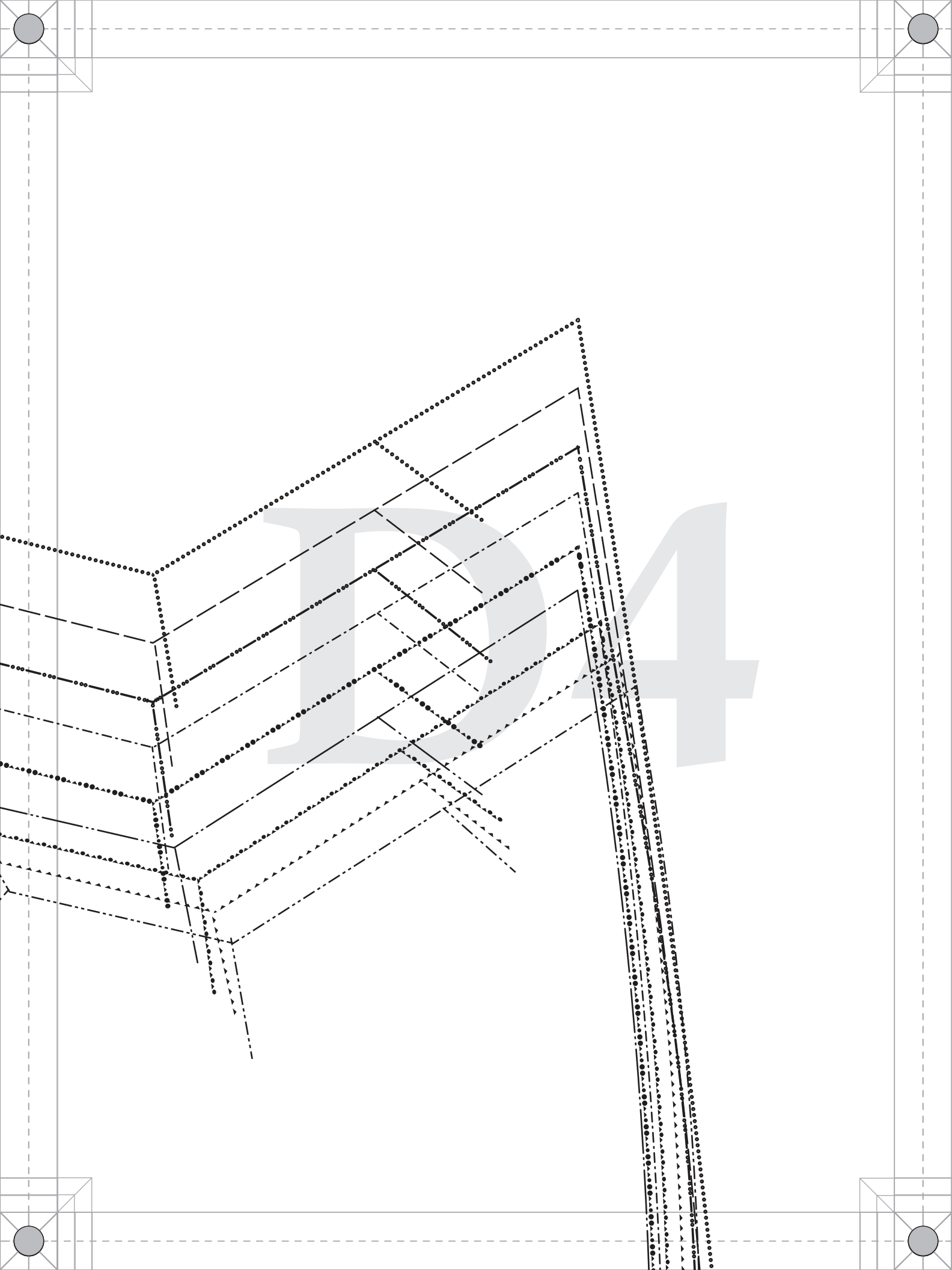


D











#MoodNolitaPattern

"The Nolita Vest"
MDF466

G - POCKET FLAP

FABRIC: Cut 2

Ladies Sizes XS to 5XL

1/2" seam allowances (SA's) included

GRAINLINE

XS - L

2XL - 3XL

4XL - 5XL



#MoodNolitaPattern

"The Nolita Vest"
MDF466

H - POCKET WELT

FABRIC: Cut 2

Ladies Sizes XS to 5XL

1/2" seam allowances (SA's) included

XS - L

2XL - 3XL

4XL - 5XL

4XL - 5XL



#MoodNolitaPattern

"The Nolita Vest"

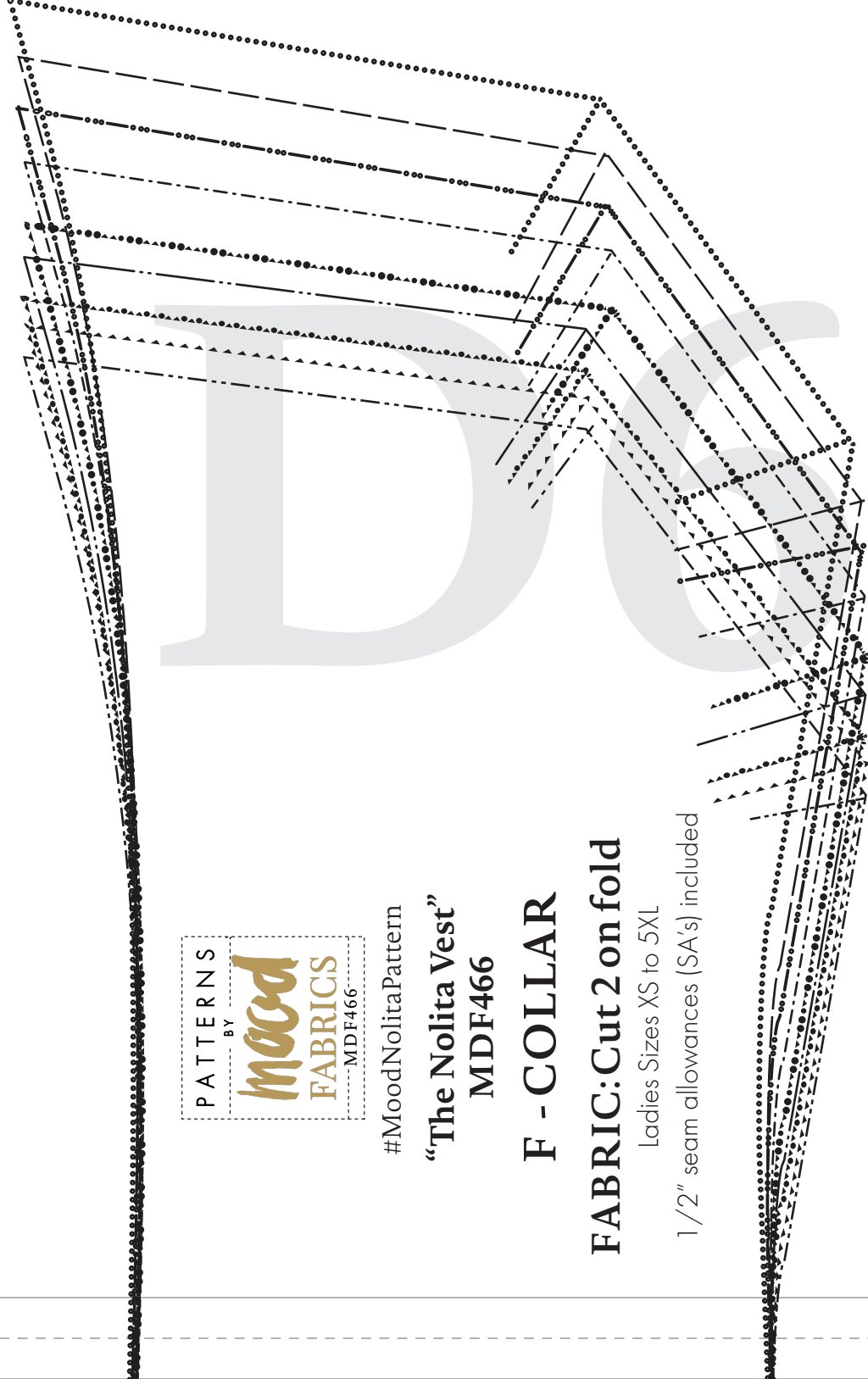
MDF466

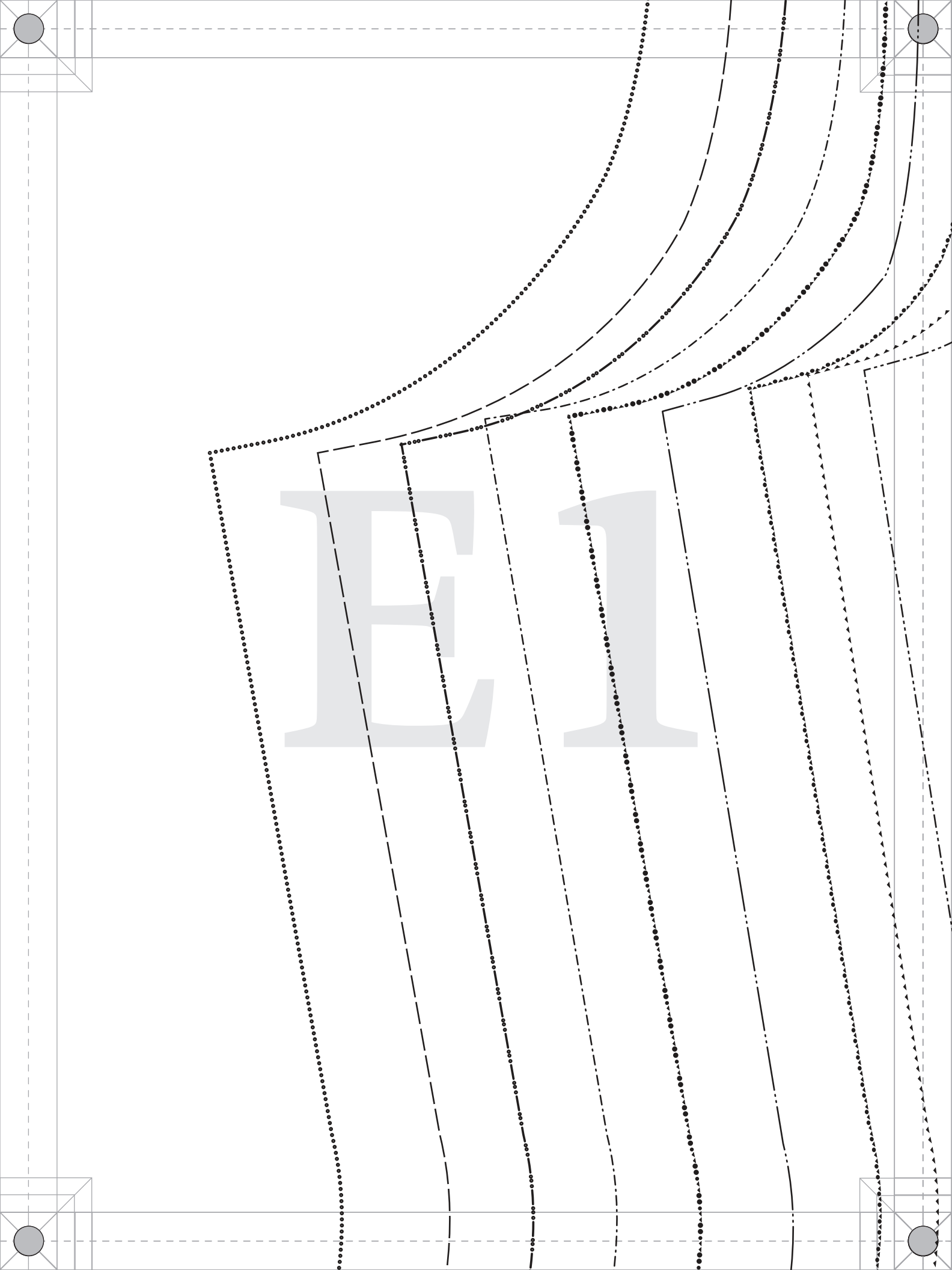
F - COLLAR

FABRIC: Cut 2 on fold

Ladies Sizes XS to 5XL

1/2" seam allowances (SA's) included







#MoodNolitaPattern

**“The Nolita Vest”
MDF466**

**D - FRONT LINING
LINING: Cut 2 mirrored**

Ladies Sizes XS to 5XL

1/2" seam allowances (SA's) included

GRAINLINE

E3



#MoodNolitaPattern

**“The Nolita Vest”
MDF466**

E - FRONT FACING

FABRIC: Cut 2 mirrored

Ladies Sizes XS to 5XL

1/2" seam allowances (SA's) included





#MoodNolitaPattern

**“The Nolita Vest”
MDF466**

I - POCKET BAG

LINING: Cut 1

Ladies Sizes XS to 5XL

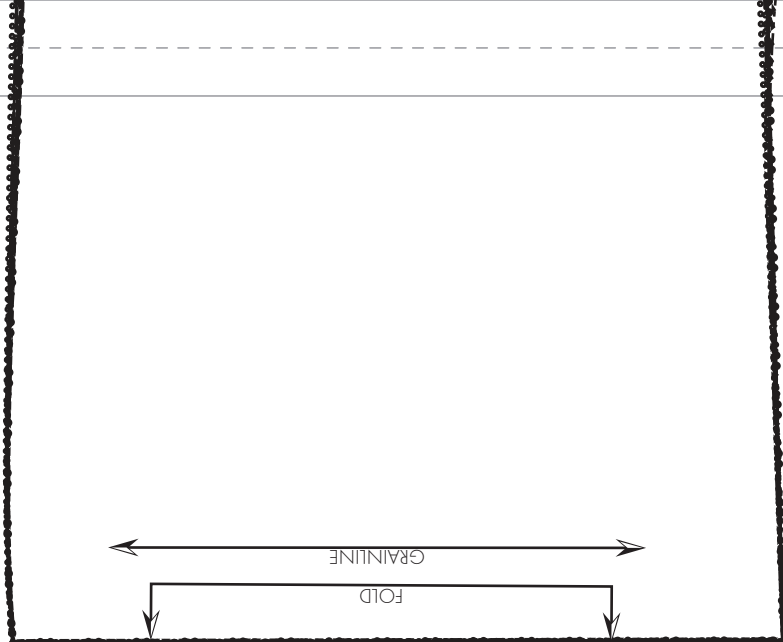
1/2" seam allowances (SA's) included

GRAINLINE

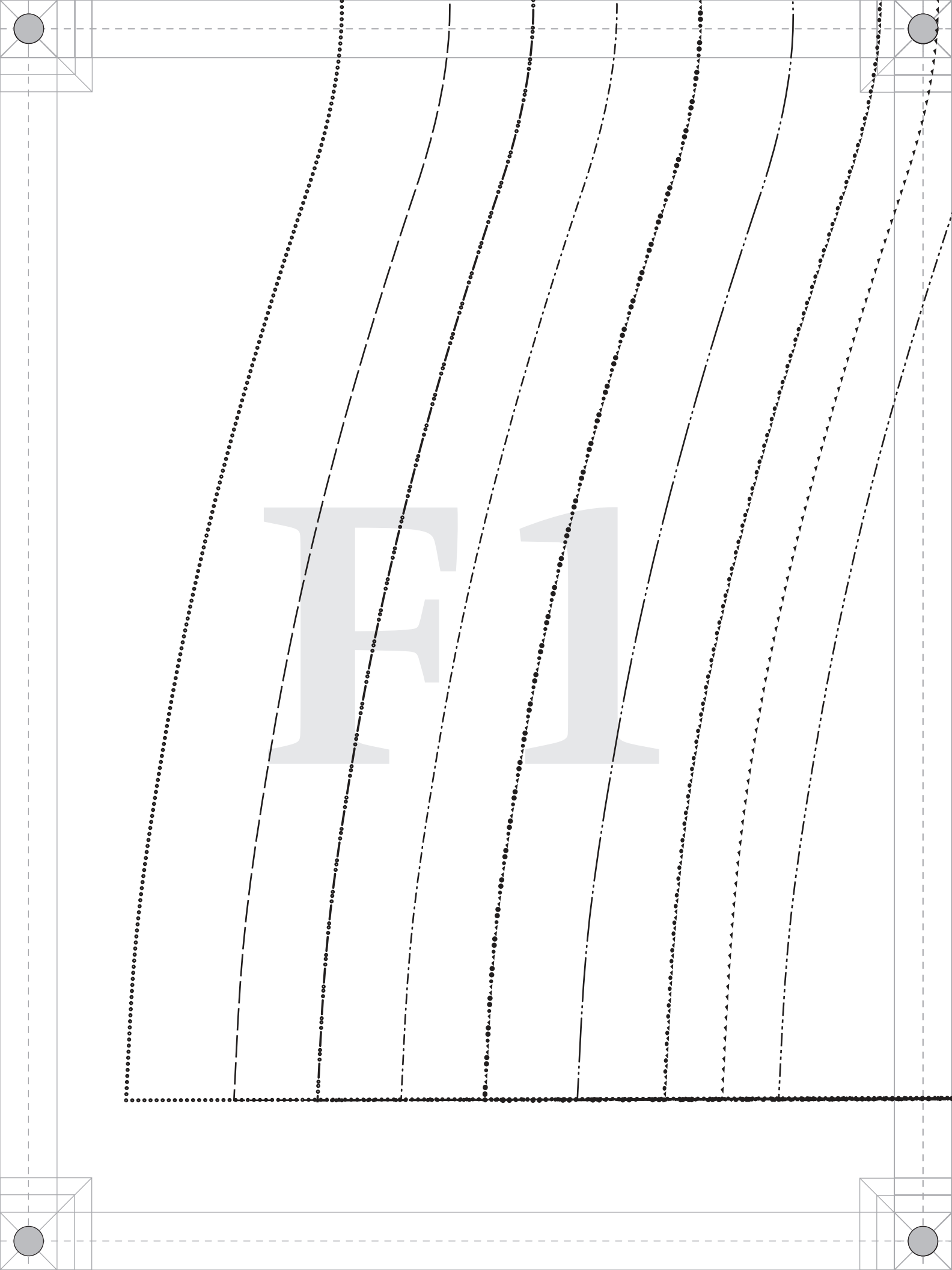
XS - L

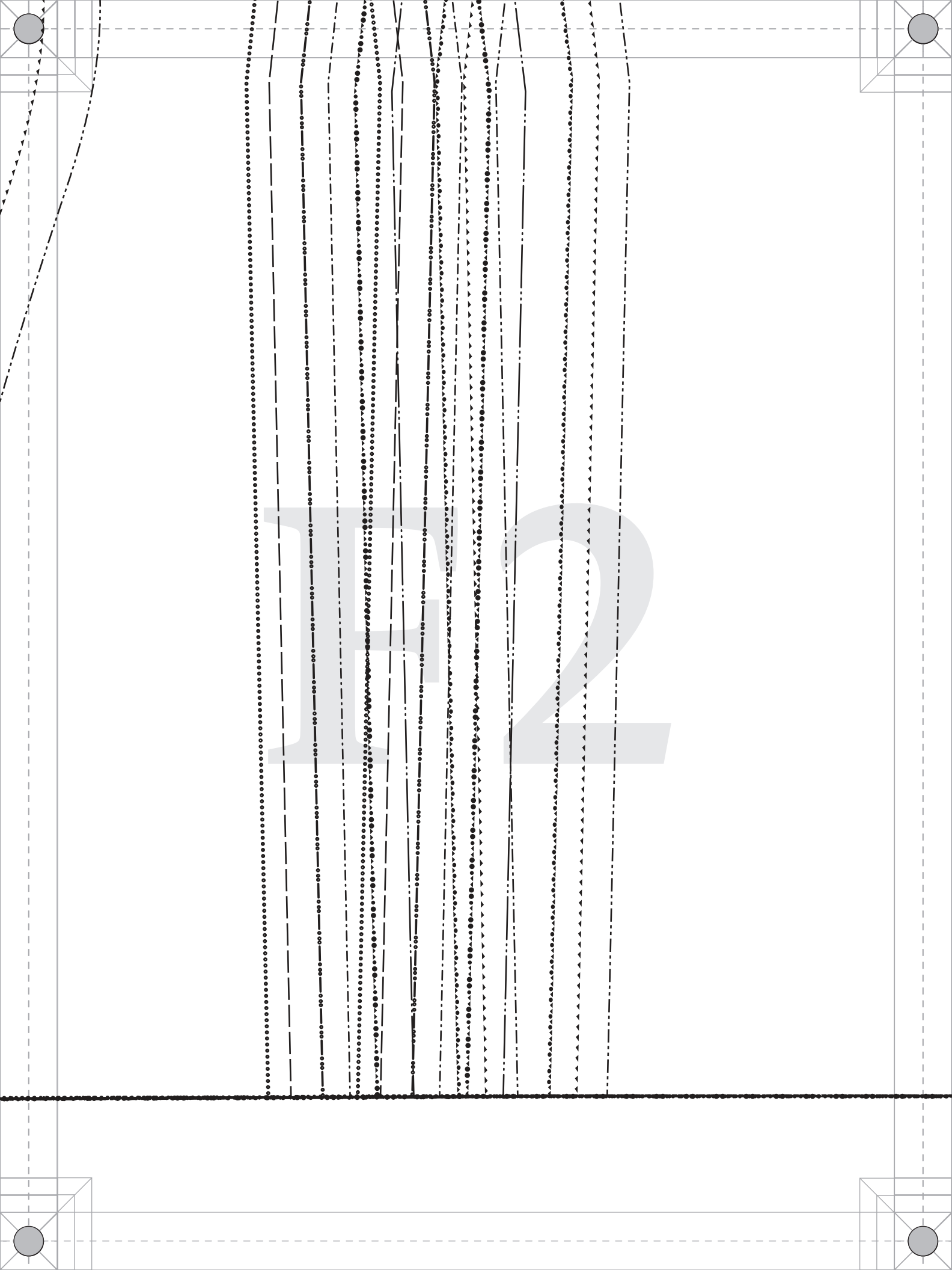
2XL - 3XL

4XL - 5XL



E6





F3

