

# Delaure Card Holder & Wallet

by Dogaart



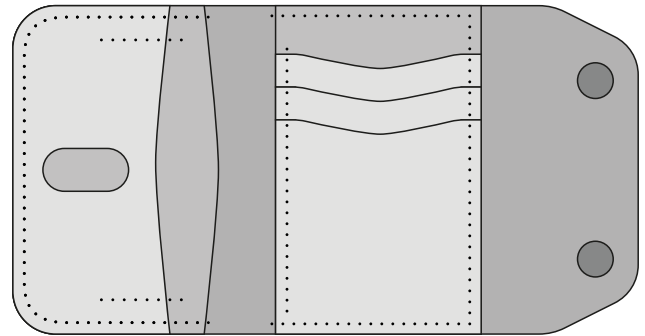
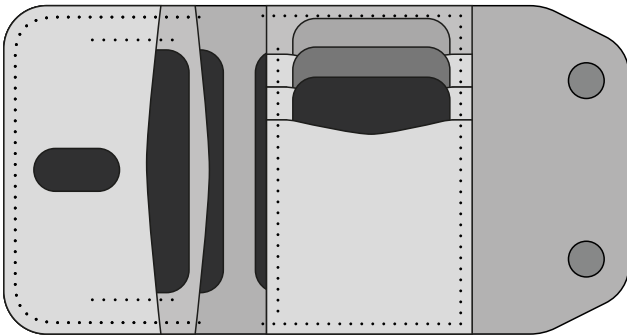
Hi, Nice to meet you.

Thanks for your purchase. I wish you have fun while producing.

[www.dogaart.eu](http://www.dogaart.eu)  
[etsy.com/Dogaart](https://etsy.com/Dogaart)  
[instagram.com/Dogaartcraft](https://instagram.com/Dogaartcraft)

## Information;

- 1-2 Persons If you are a small leather manufacturer, you can produce and sell as much as you want using this mold.
- Paid sales or free distribution of this pattern is not allowed.
- It is not allowed to produce and sell cutting molds and cutting knives using this mold.
- Non-handmade, mass production is not allowed.
- For all your questions about mold or design, you can contact us on [instagram.com/dogaartcraft](https://instagram.com/dogaartcraft).
- I would be very happy if you share my **Delaure Wallet** you created on social media, if you share my Instagram account, website or etsy account.



## General Instructions;

- You should print the PDF in Original ( 100% ) size.
- You should verify the reference values on the printouts by measuring them with a ruler.
- You can prepare the pattern by cutting out the outlines of the patterns on the printouts.
- You should follow the explanations on the pages in order.
- The distance from each edge to the seam is 4mm. (Explanation is available if different sizes are used.)

## Delaure Features;

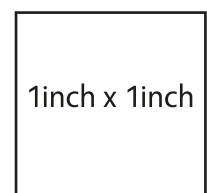
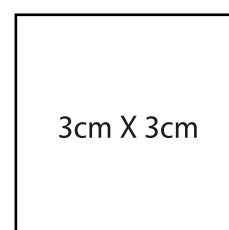
- 220mm x 115mm open, 85mm x 115mm closed.
- 6 Card Slots
- There are 2 snaps available.
- Also, 72mm x 110mm compartments where you can carry banknote.
- Crafting Difficulty (Of 10) xxxxx-----

### Leather:

- Use 1-1.2mm thickness (2-2.5 oz) for the interior
- Use 1.4-1.6mm thickness (3-3.5 oz) for the exterior

You are now ready for production. Have fun.  
Dogaart

### Print Accuracy

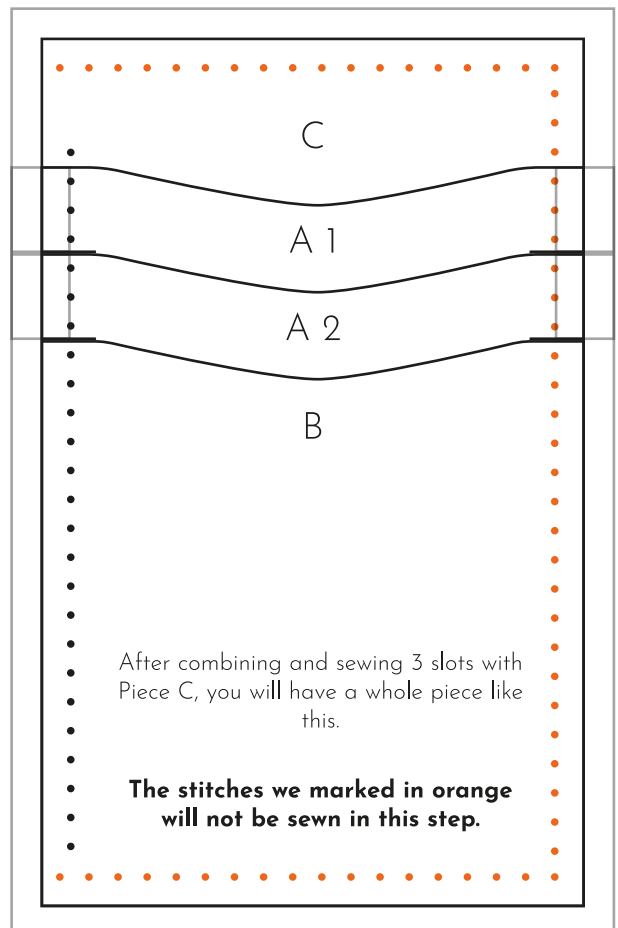
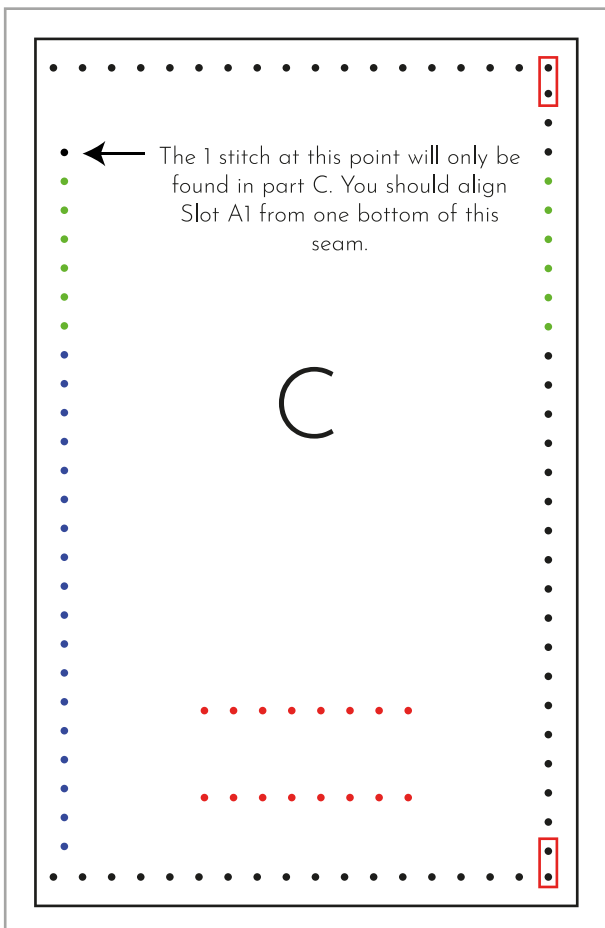
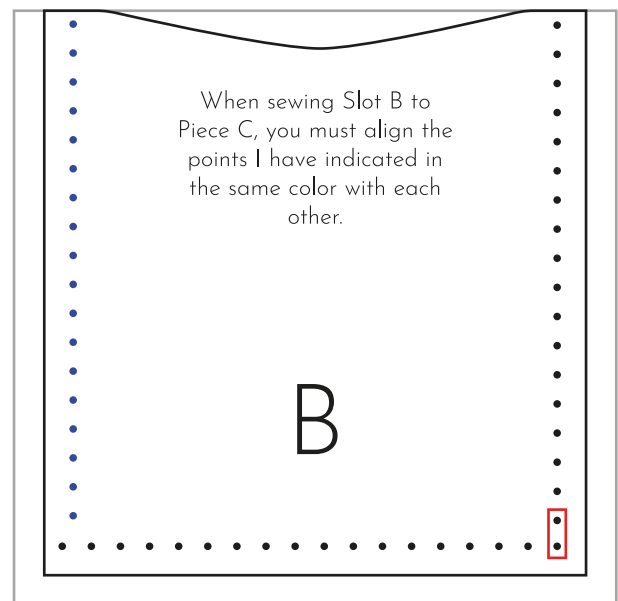
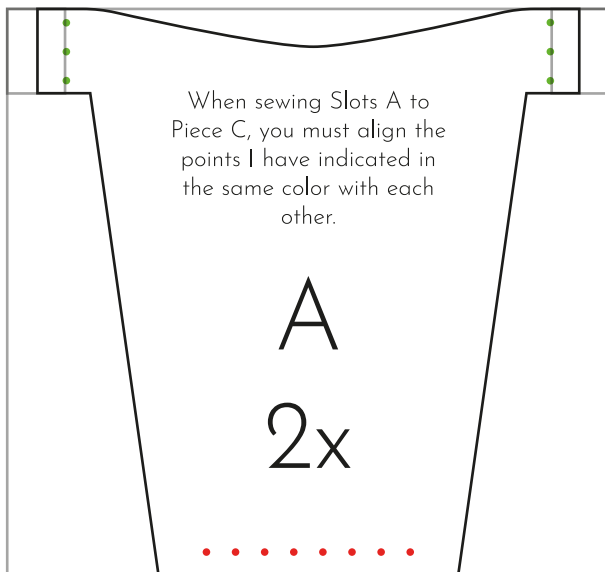


**First of all, I will talk about the materials you will need while producing the Delaure model.**

- 3.85mm stitching pitch punch.
- 4mm diameter round punch.
- 12.5mm Diameter Snap Set (2 Sets).
- 15mm diameter round punch.

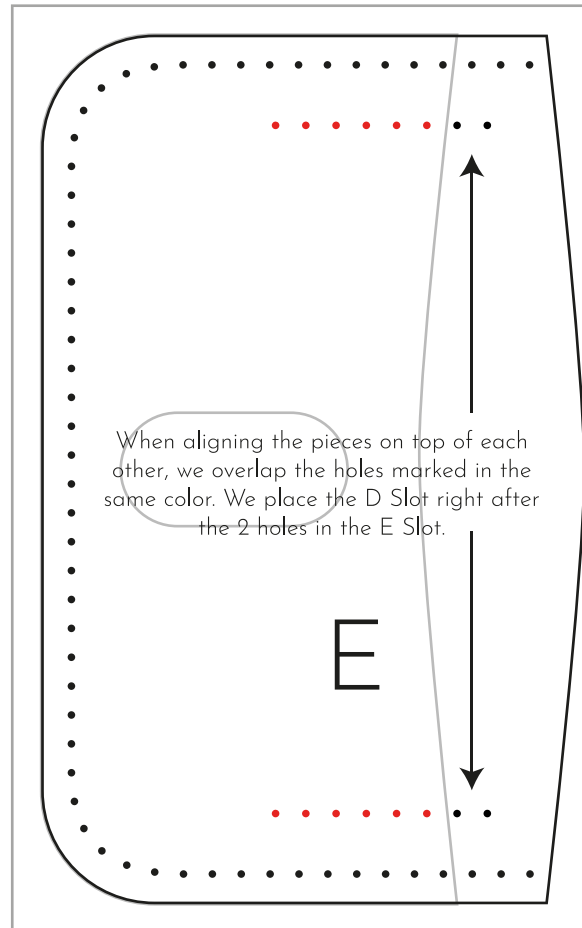
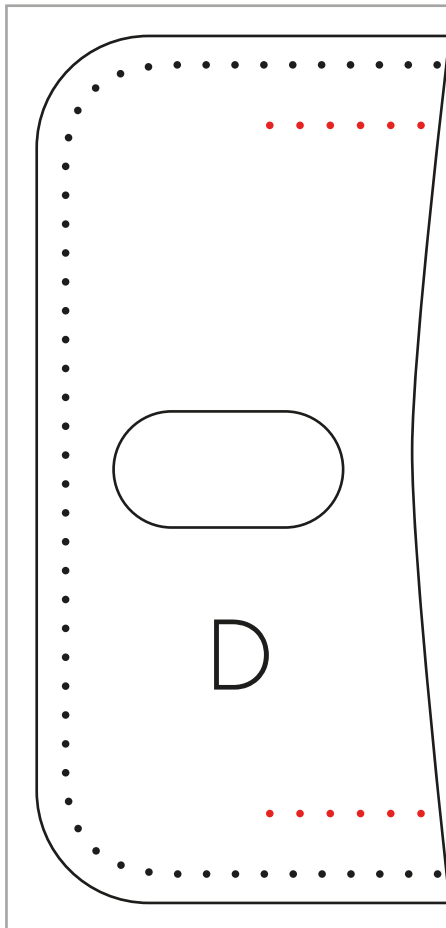
**Now We Can Start Production.**

1. We cut out parts of the wallet. Total 7 Pieces.
2. This step is very important when punching the sewing holes; The distance between the two stitching holes in the Rectangle in Parts C, B, F is 3.42 mm. It is not a noticeable difference, but it can cause the row to shift in the punch with 3.85mm pitch. While hole, make by taking this difference into consideration.
3. We combine the Vertical Card slots. (A 2 pieces, B, C)

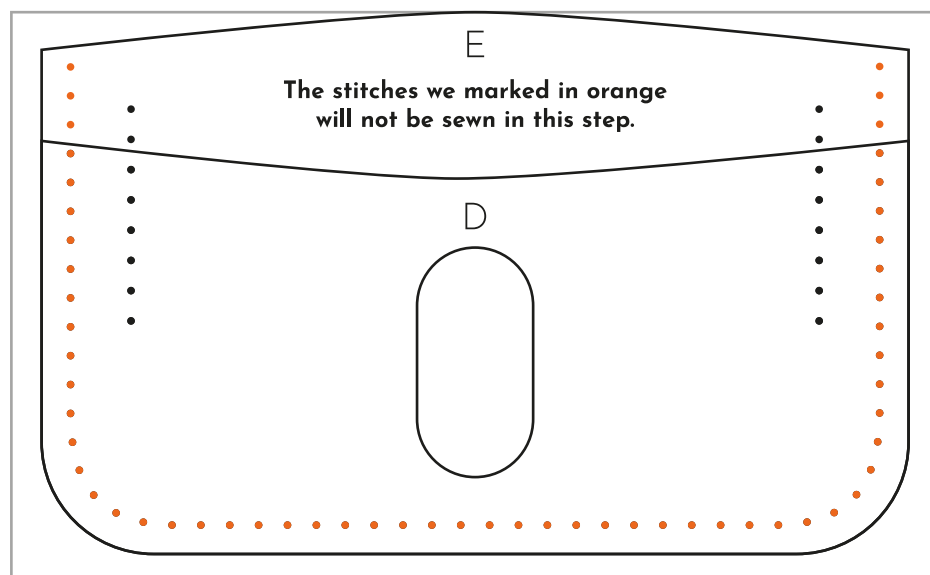


4. We combine the horizontal slots, In this order, Slot E will be at the Bottom, and Slot D will be at the top.

5. For the hole in the D Slot, we pierce the marked places with a 15mm diameter punch and connect the holes from both sides using a cutting tool.



6. After the last two steps, we will have a combined piece that looks like the one below.



**7.** Now, we are preparing the outer cover of the wallet, don't forget to open the snap holes and attach the snaps right now.

**8.** We can start assembling the wallet, you should stick the inner parts of the wallet that we combined following page 2 and 3 to the inside of Part F by aligning the Stitch holes.

**9.** You can see that the stitching holes we marked with Orange on pages 2 and 3 are ready for sewing.

**10.** Now there is one last step left and all the stitching holes have been checked and the sewing process has begun for the last time. You can now sew the seam holes around the wallet.

**11.** All transactions are completed here. Now you can optionally perform additional operations such as edge polishing and edge painting. Now you have a newly produced wallet. :) Don't forget to tag us when sharing your wallet photos on social media, we would be very happy.

