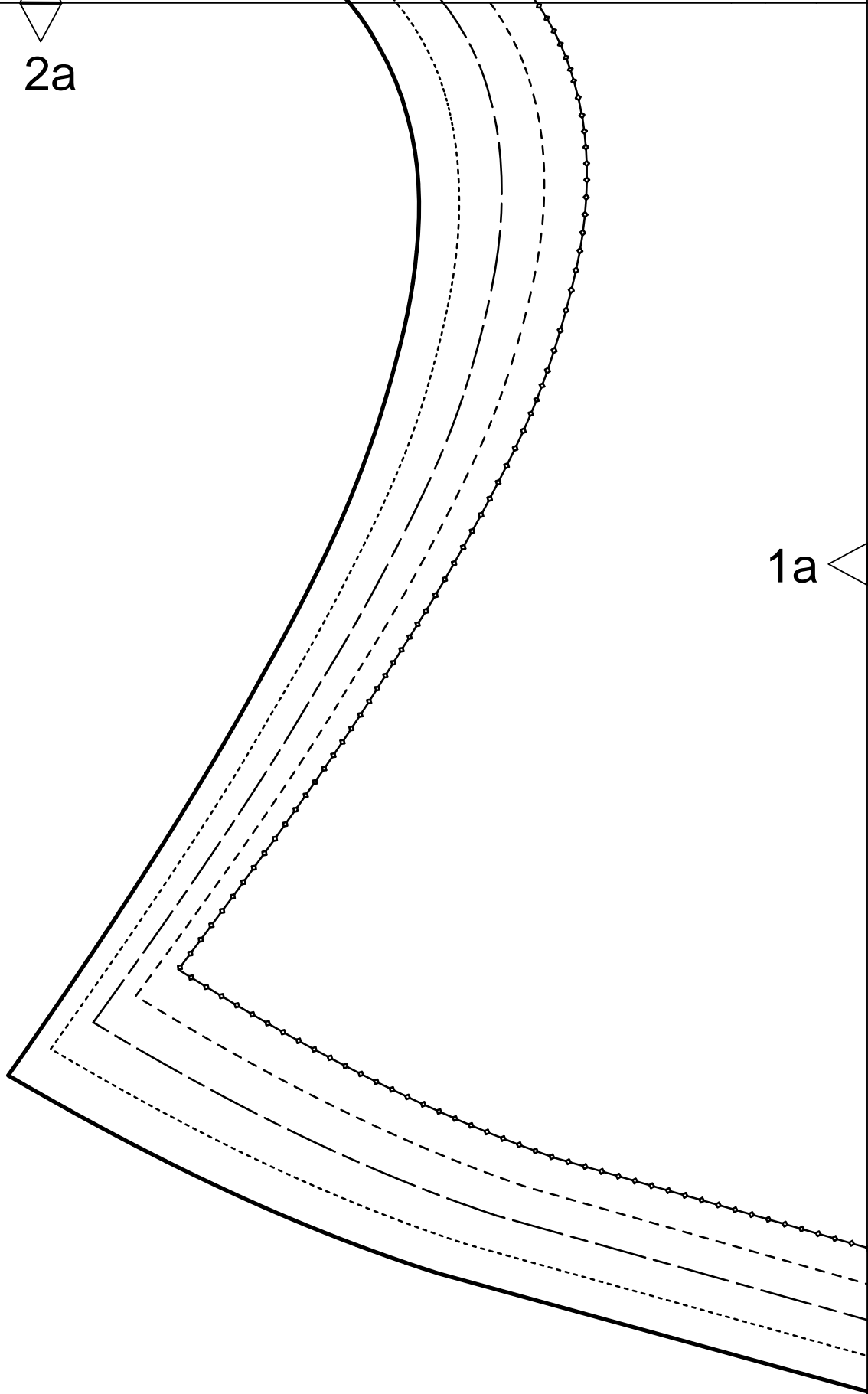
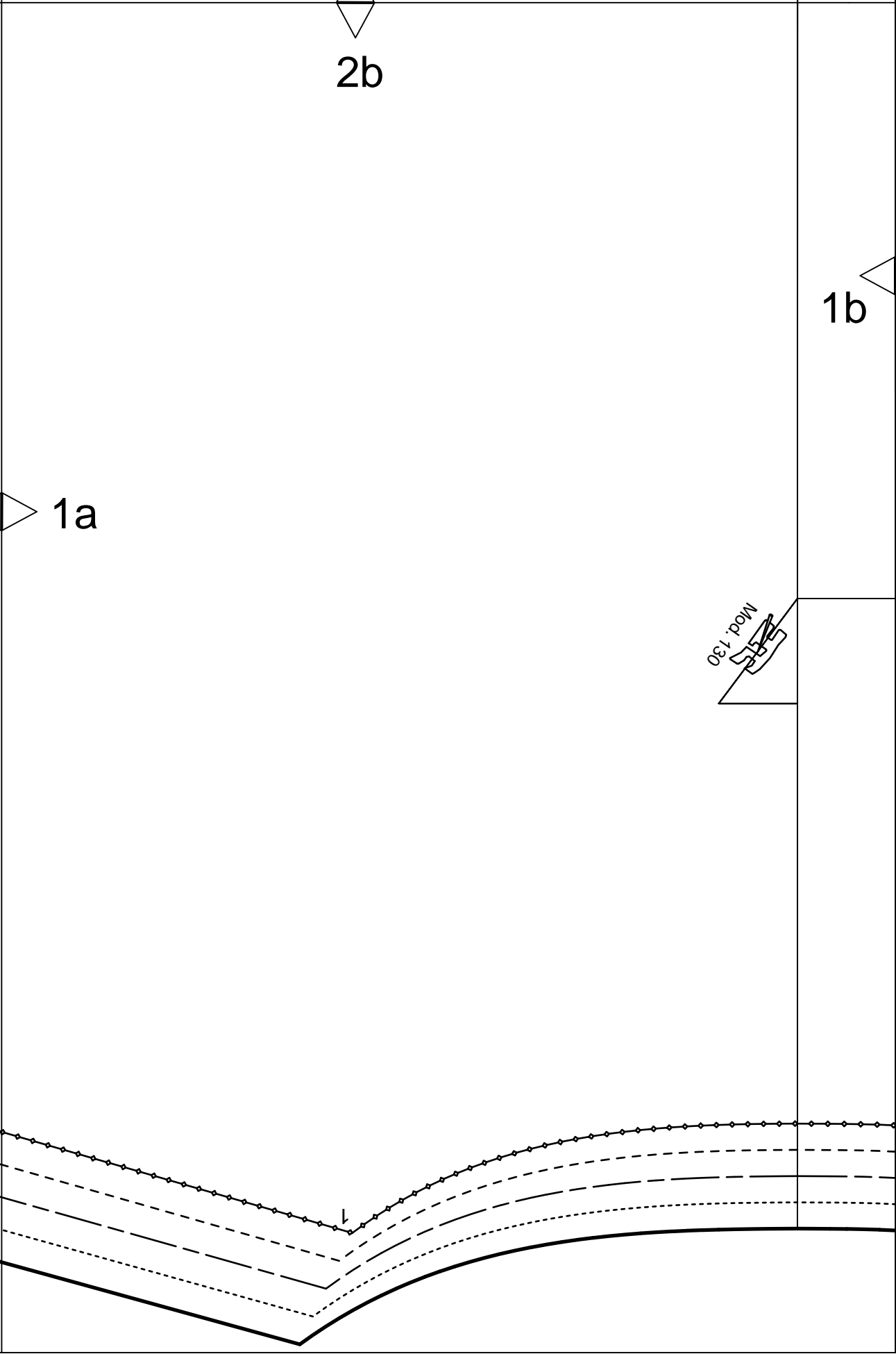
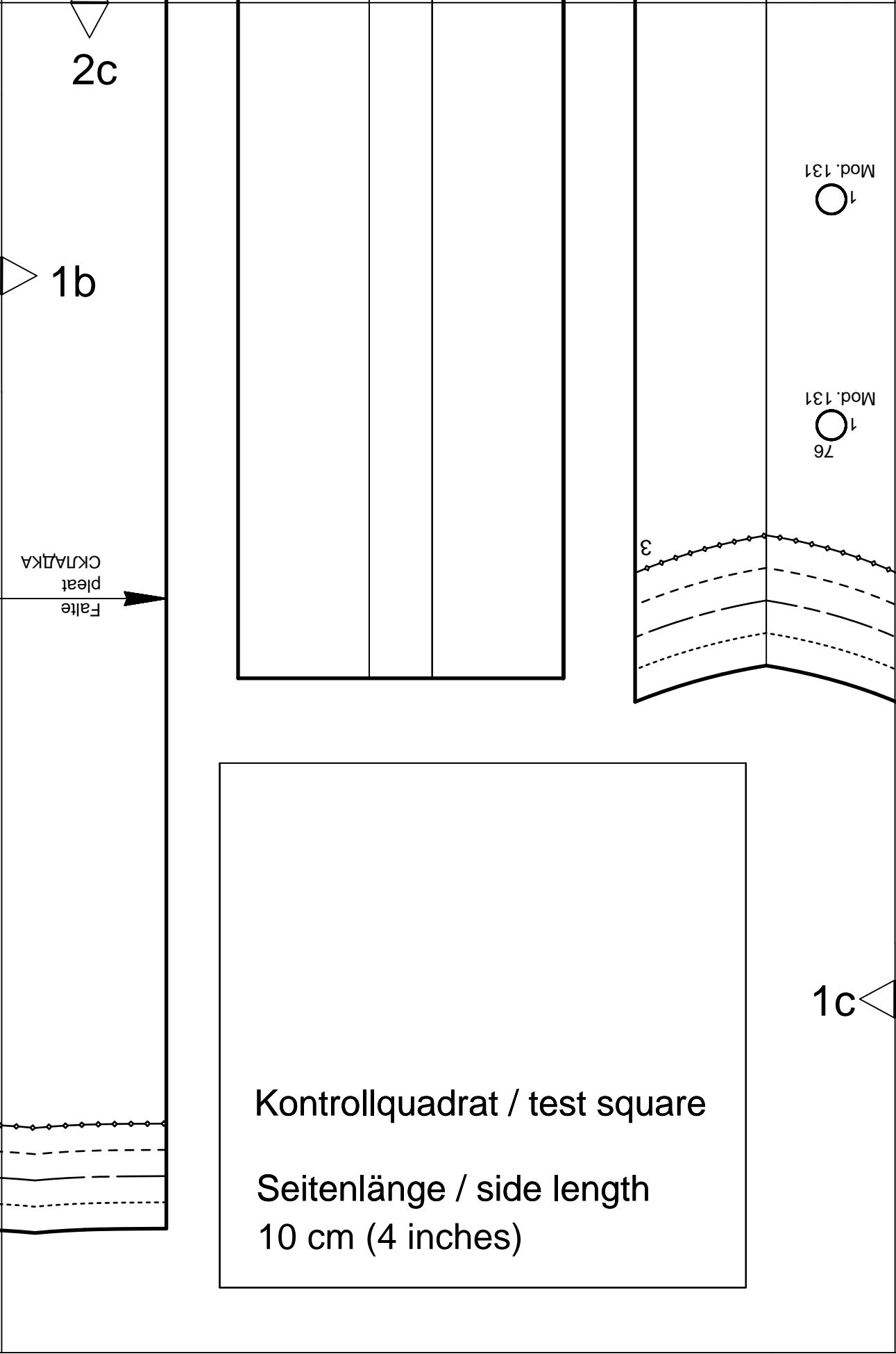


2a

1a



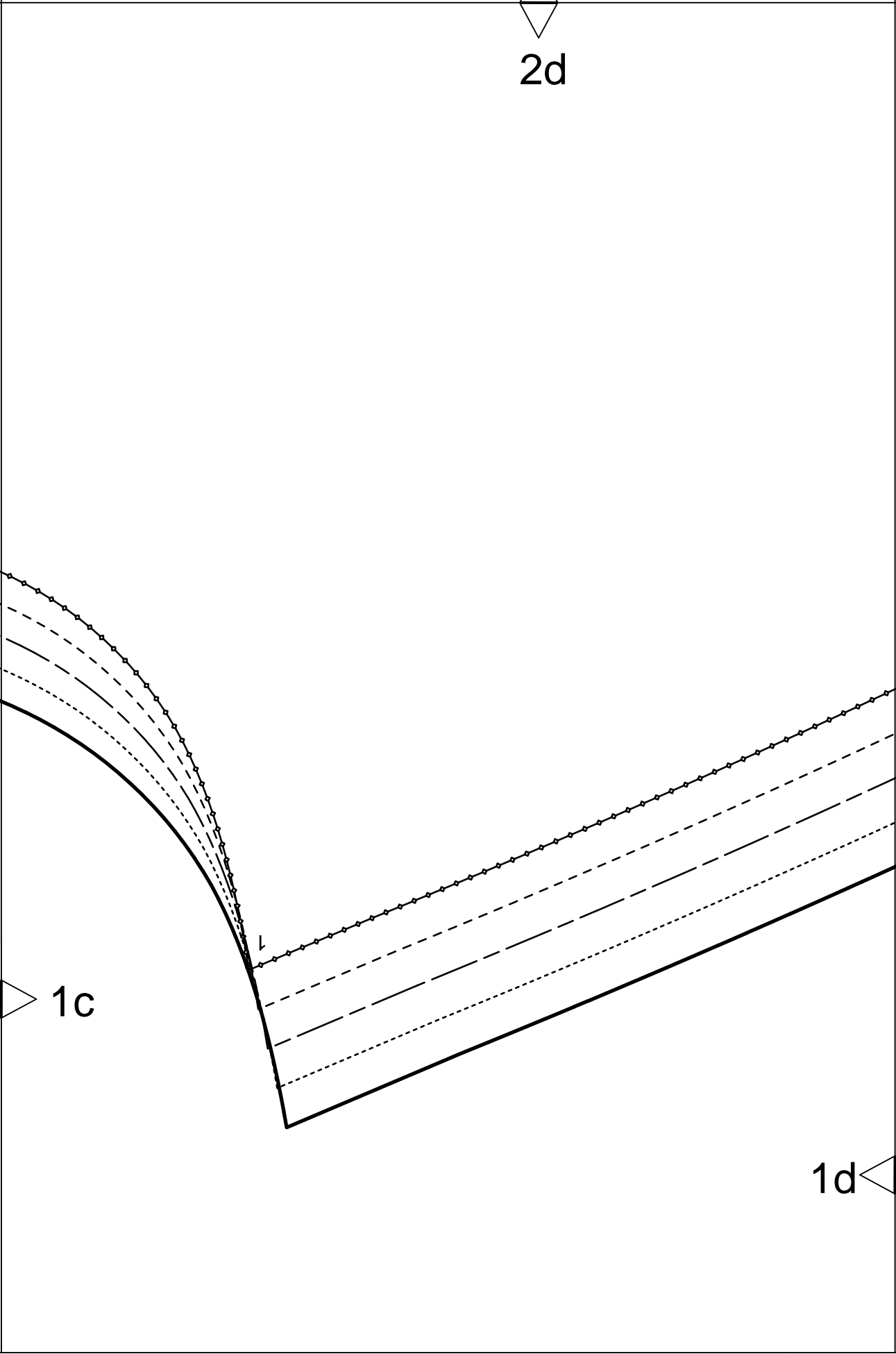


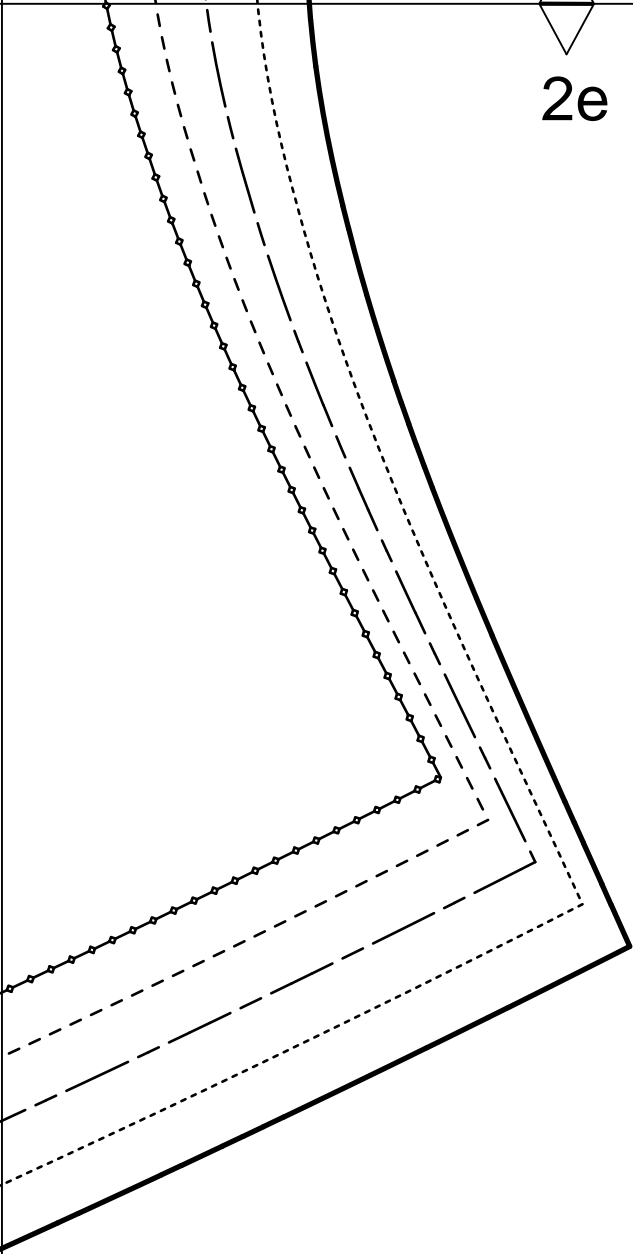


2d

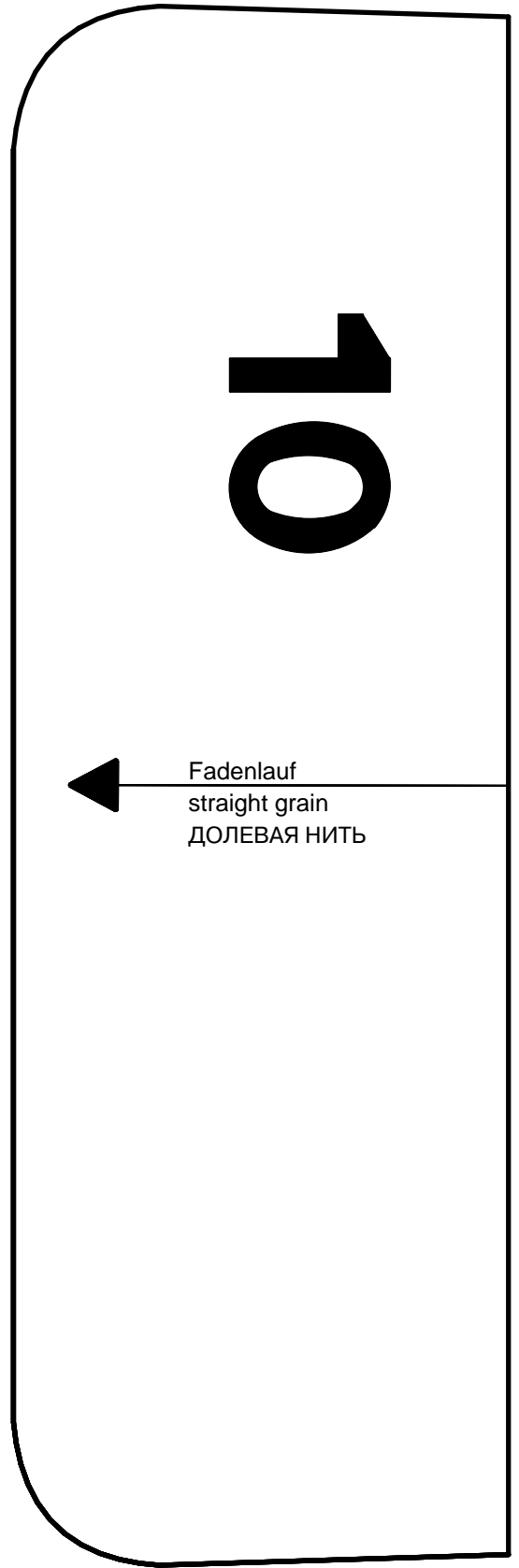
1c

1d





2e



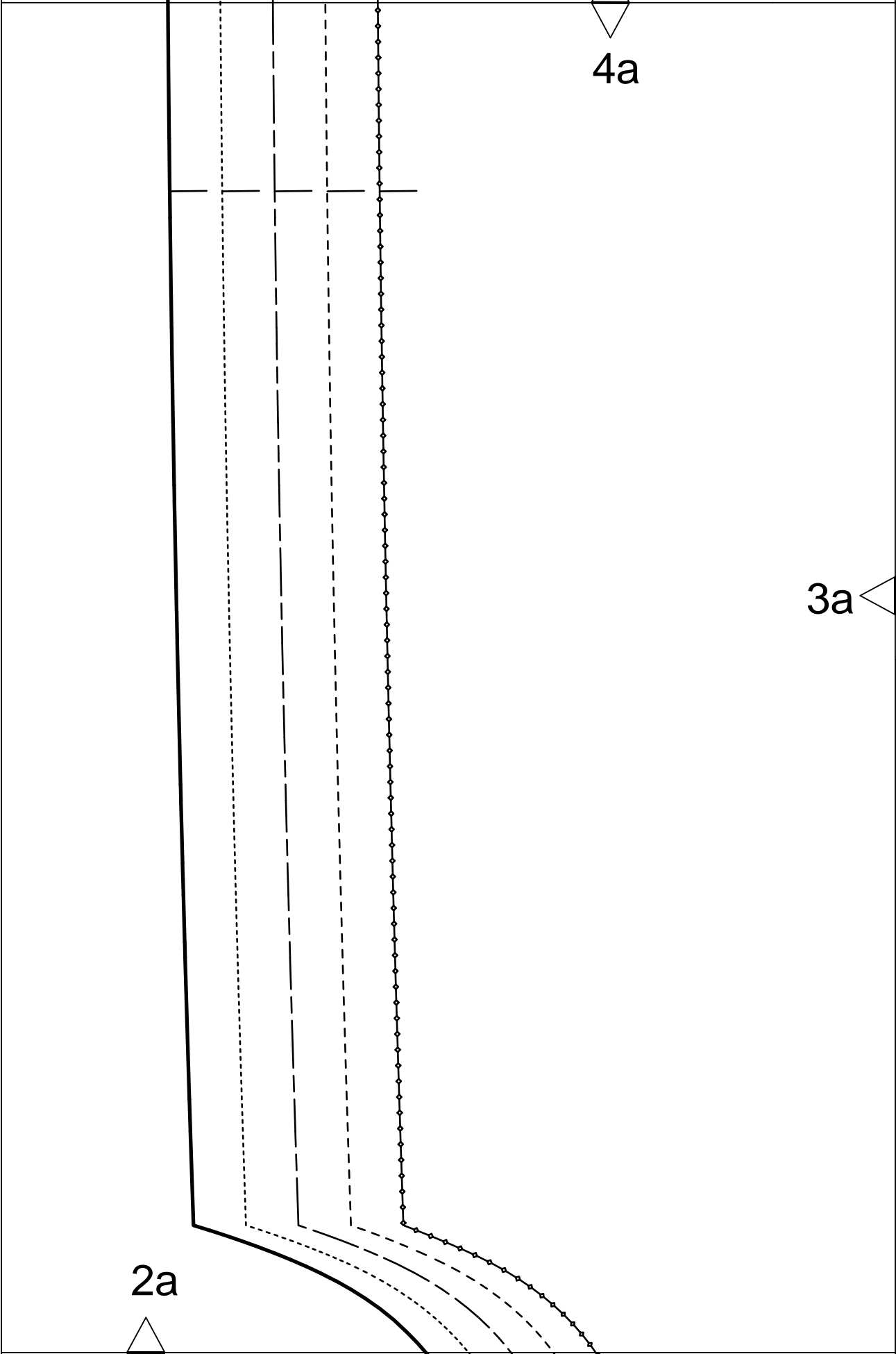
10

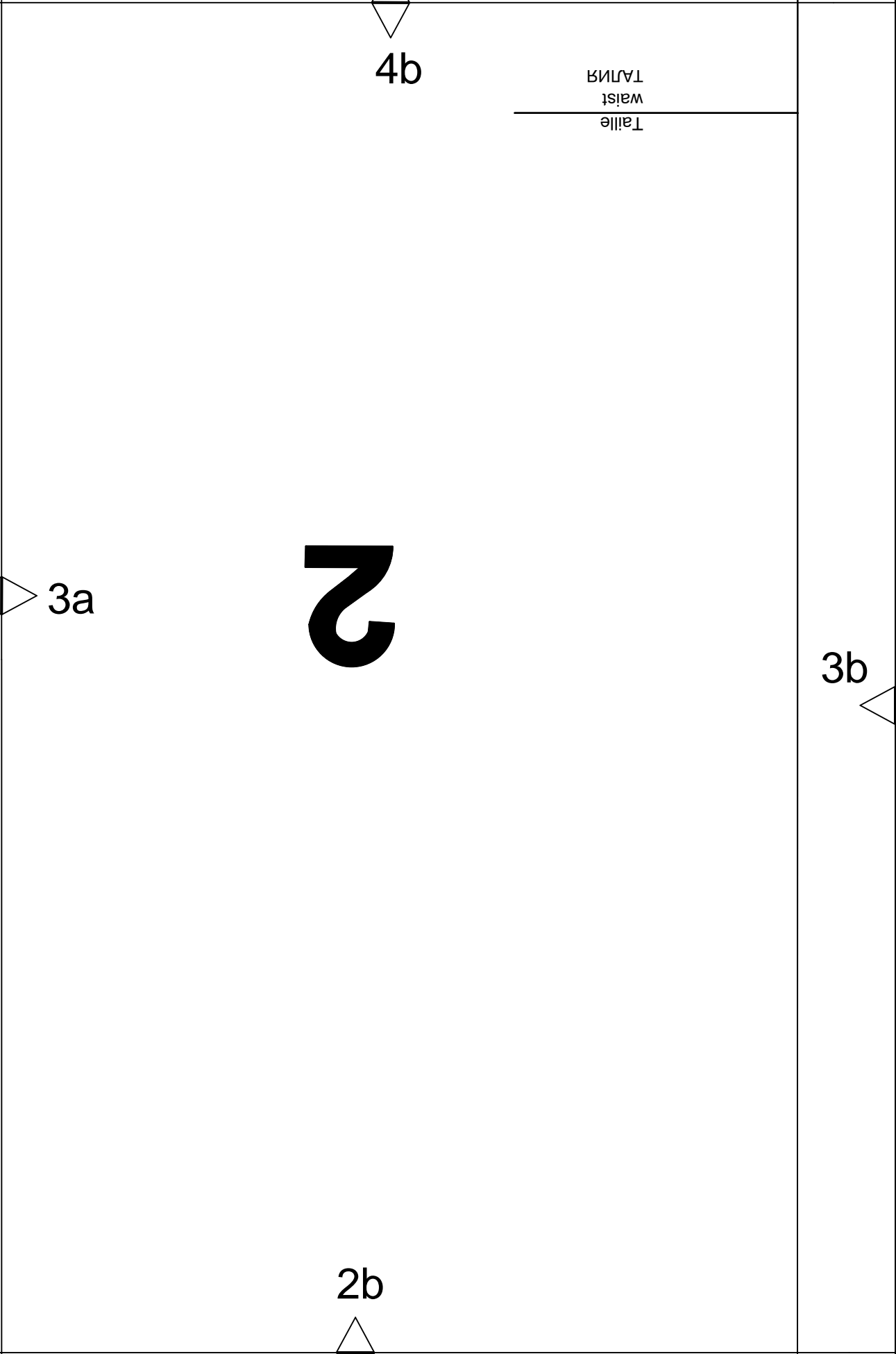


Fadenlauf
straight grain
ДОЛЕВАЯ НИТЬ



1d





4b

Taille
Waist
TAJLINA

2

3a

3b

2b

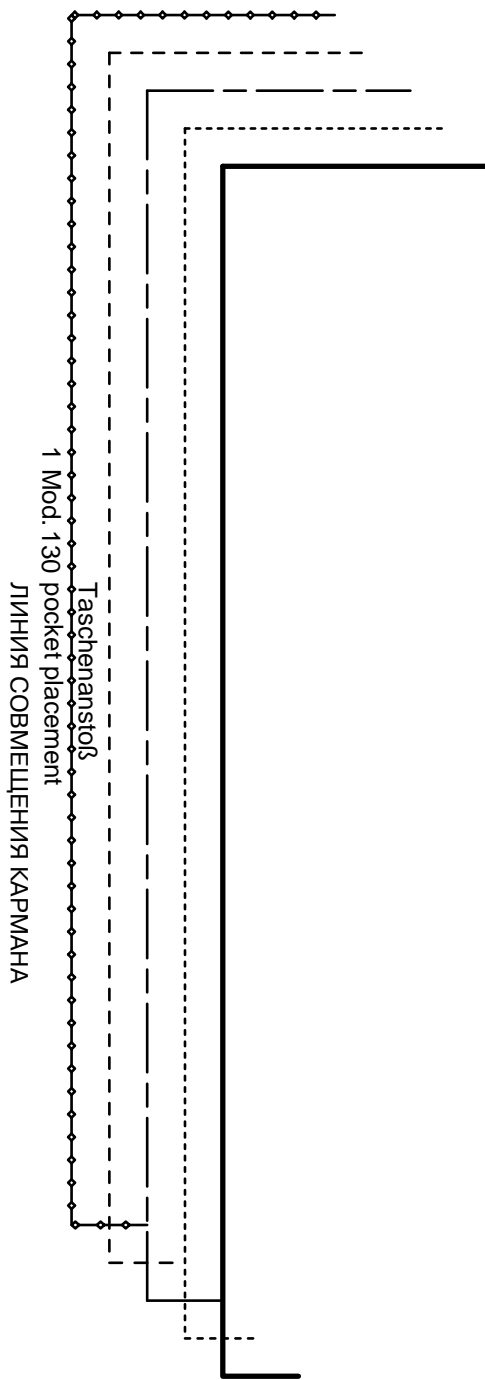
<div> <div>3c</div> <div> <div>Mod. 130 Reißverschluss</div> <div>zipper</div> <div>ЗАСТЕЖКА - МОЛНИЯ</div> </div> </div>	<div> <div>1</div> <div>Mod. 131</div> </div>	<div> <div>1</div> <div>Mod. 131</div> </div>	<div> <div>1</div> <div>Mod. 131</div> </div>	<div> <div>1</div> <div>Mod. 131</div> </div>	<div> <div>1</div> <div>Mod. 131</div> </div>	<div> <div>92</div> <div>Mod. 131</div> <div>76</div> </div>	<div> <div>1</div> <div>Mod. 131</div> </div>
<div> <div>Besatz Umbruch</div> <div>facing fold</div> <div>ОСТАЧКА, ПОДБОРТ СГИБ</div> </div>							
<div> <div>8</div> </div>							
<div> <div>4c</div> <div> <div>rückwärtige Mitte Stoffbruch Fadenlauf</div> <div>center back fold straight grain</div> <div>ЗАДНЯЯ СЕРЕДИНА СГИБ ДОПЛЕВАЯ НИТЬ</div> </div> </div>	<div> <div>3b</div> </div>						<div> <div>2c</div> </div>

4d

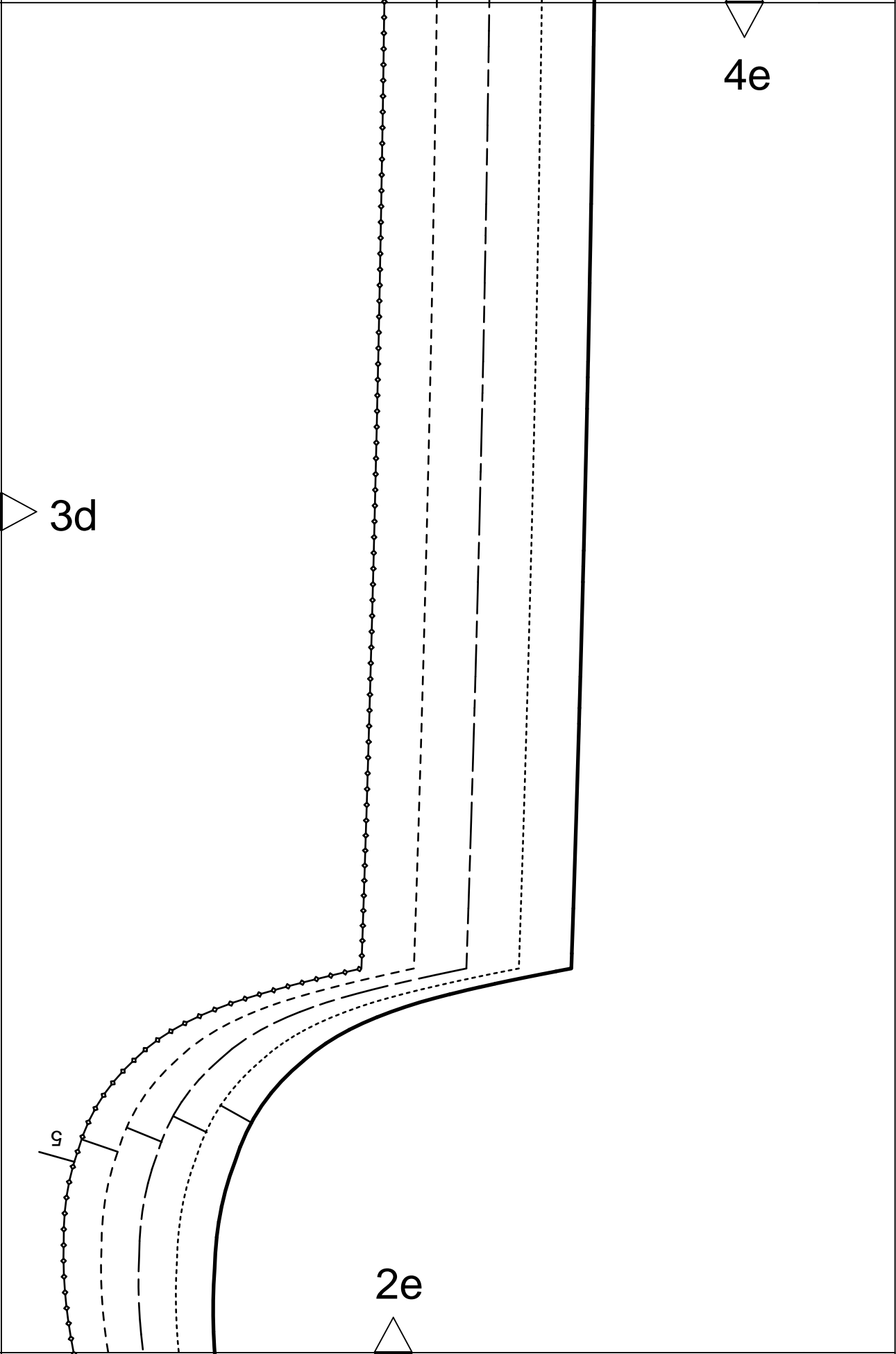
3c

3d

2d



Taschenansatz
1 Mod. 130 pocket placement
ЛИНИЯ СОВМЕЩЕНИЯ КАРМАНА



5a

Mod. 131 Taschenrechner
pocket placement
ЛИНИЯ СОВМЕЩЕНИЯ КАРМАНА

4a

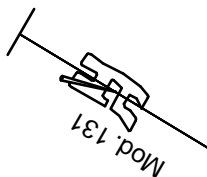
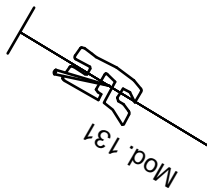
6a

6b

5a

5b

4b



Fadenlauf	straight grain	ДОЛЕВАЯ НИТЬ
-----------	----------------	--------------

A vertical scale with tick marks at every integer from 92 to 97. The numbers 92 and 97 are labeled at the bottom and top of the scale, respectively.

5c

Fadenlauf
straight grain
ДОЛЕВАЯ НИТЬ

Anstoß
placement
ЛИНИЯ СОВМЕЩЕНИЯ

Anstoß
placement
ЛИНИЯ СОВМЕЩЕНИЯ

6c

5b

4c

5d

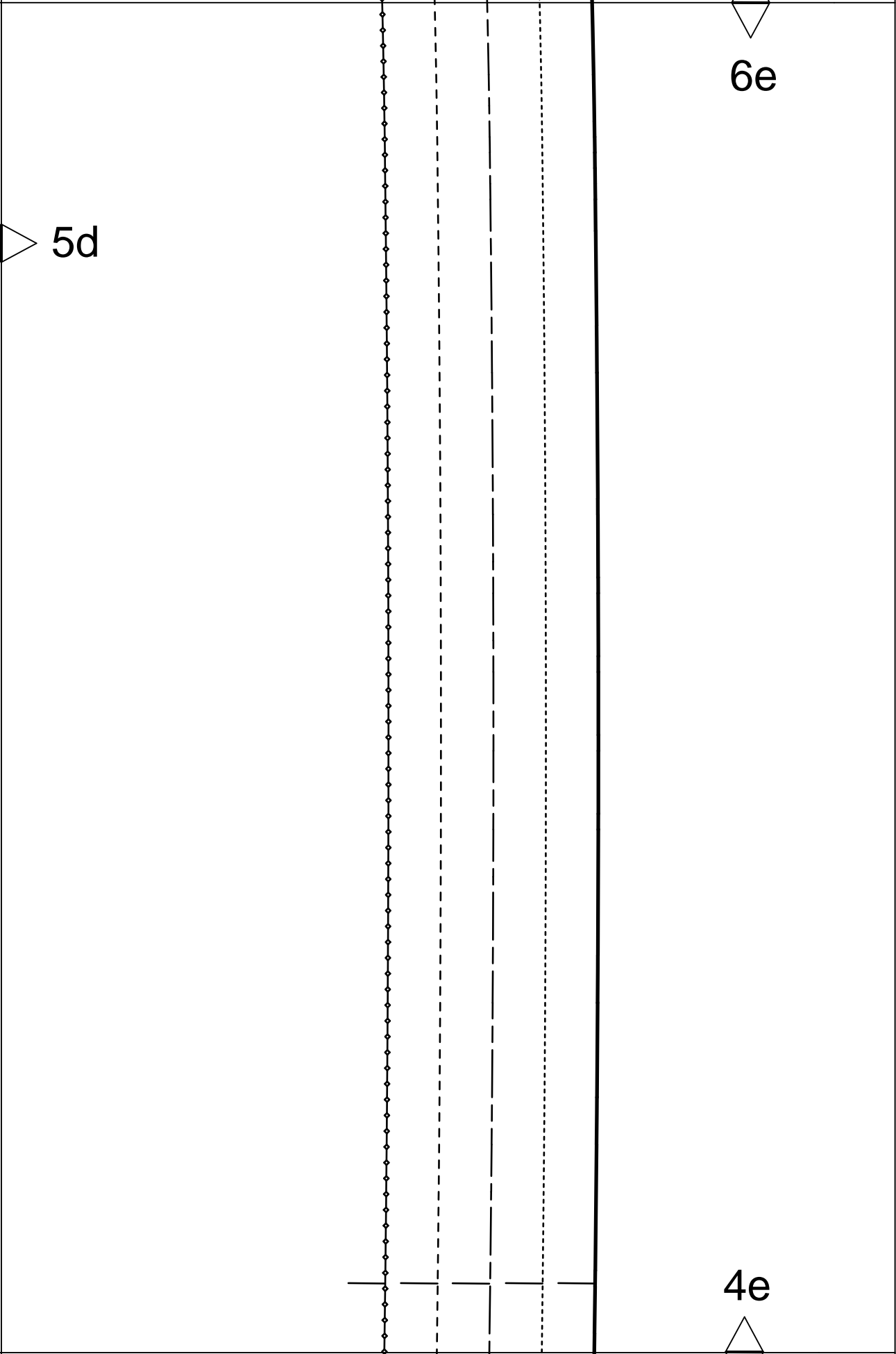
Taschenstoffs
Mod. 131 pocket placement
ЛИНИЯ СОВМЕЩЕНИЯ КАРМАНА

6d

5c

4d

Taille
waist
ТАЛИЯ

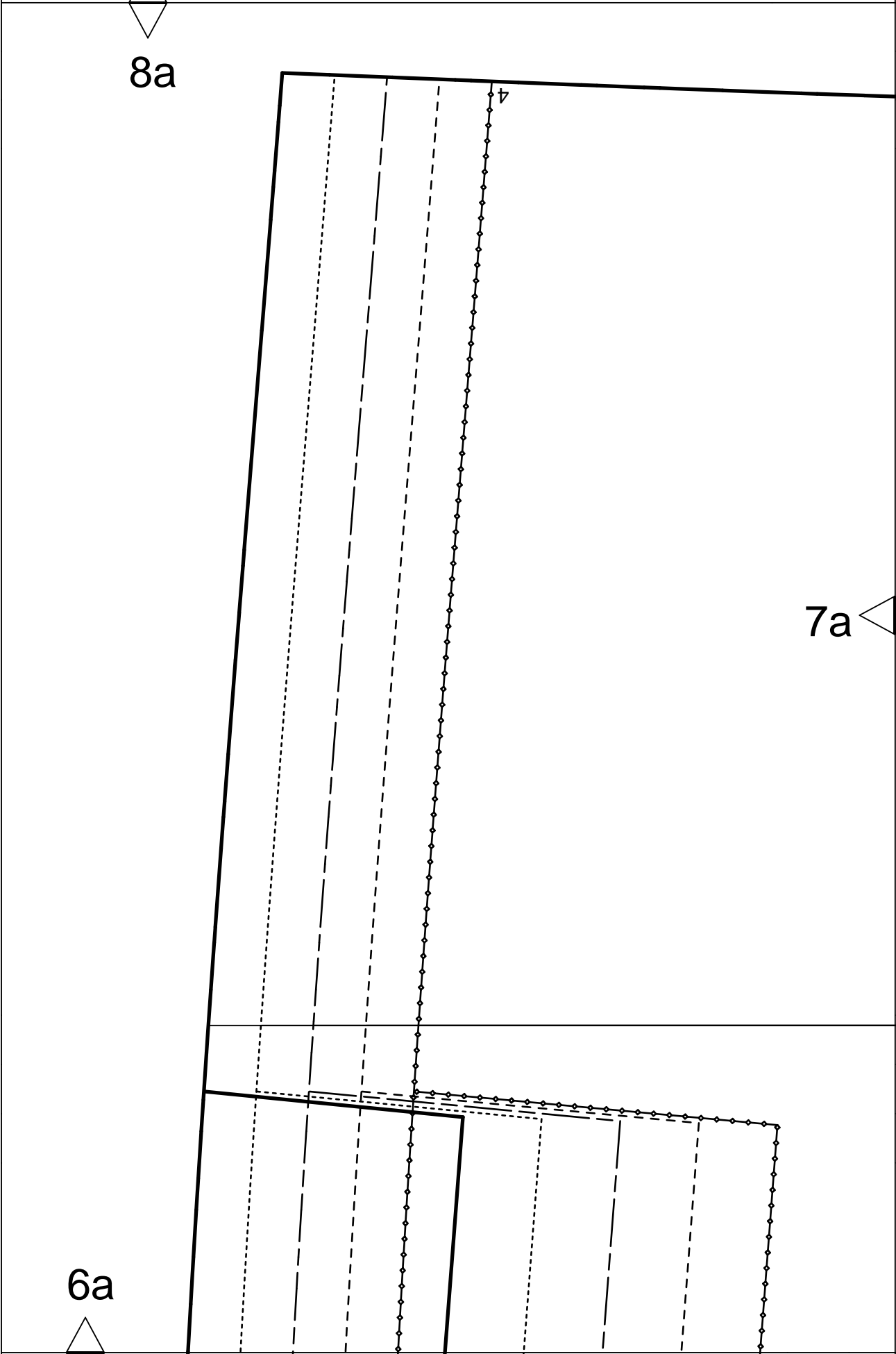


8a

7a

6a

4



8b

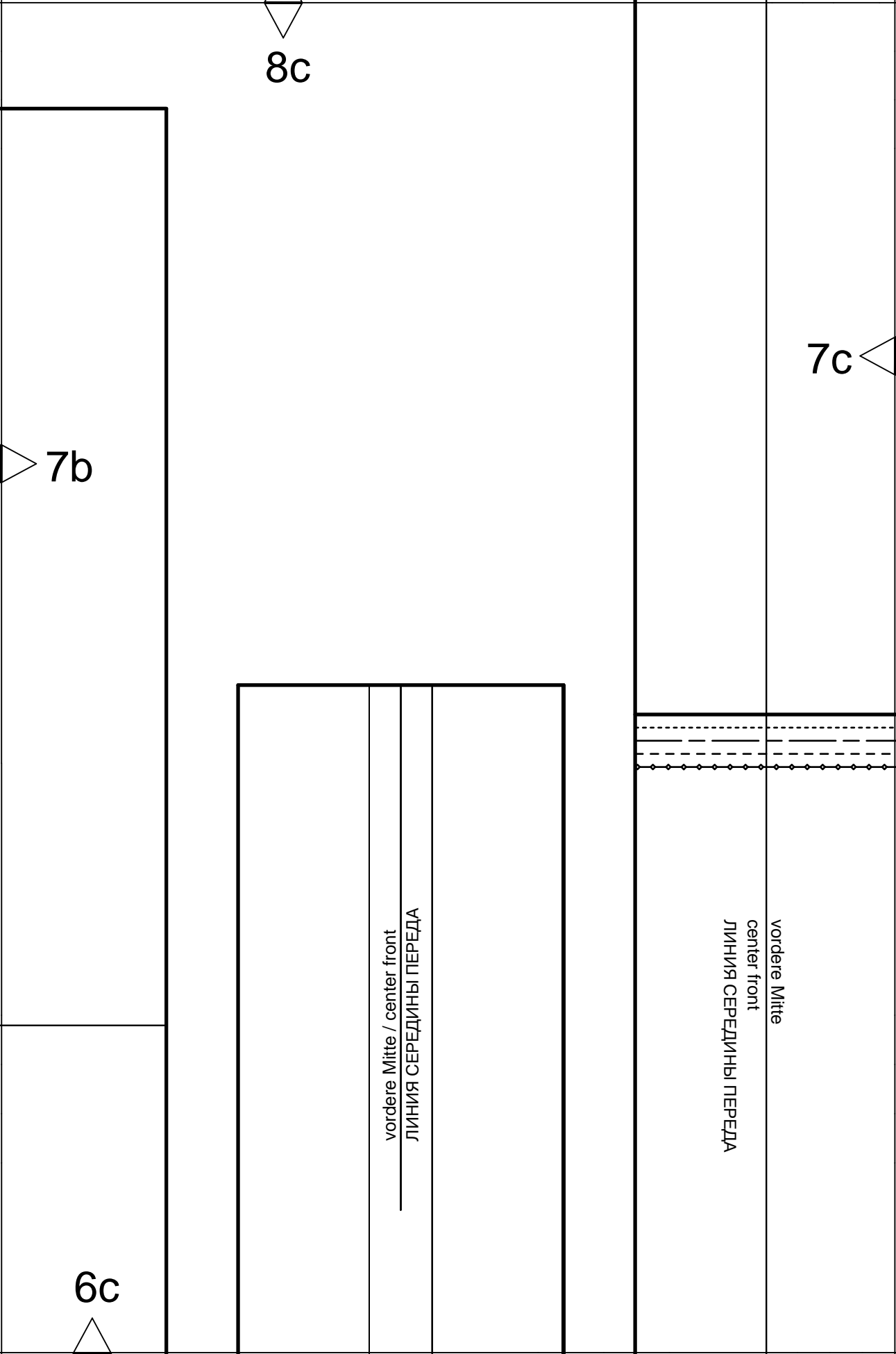
Mod. 131

7b

7a

Mod. 130

6b



8c

7b

7c

6c

vordere Mitte / center front
ЛИНИЯ СЕРЕДИНЫ ПЕРЕДА

vordere Mitte
center front
ЛИНИЯ СЕРЕДИНЫ ПЕРЕДА

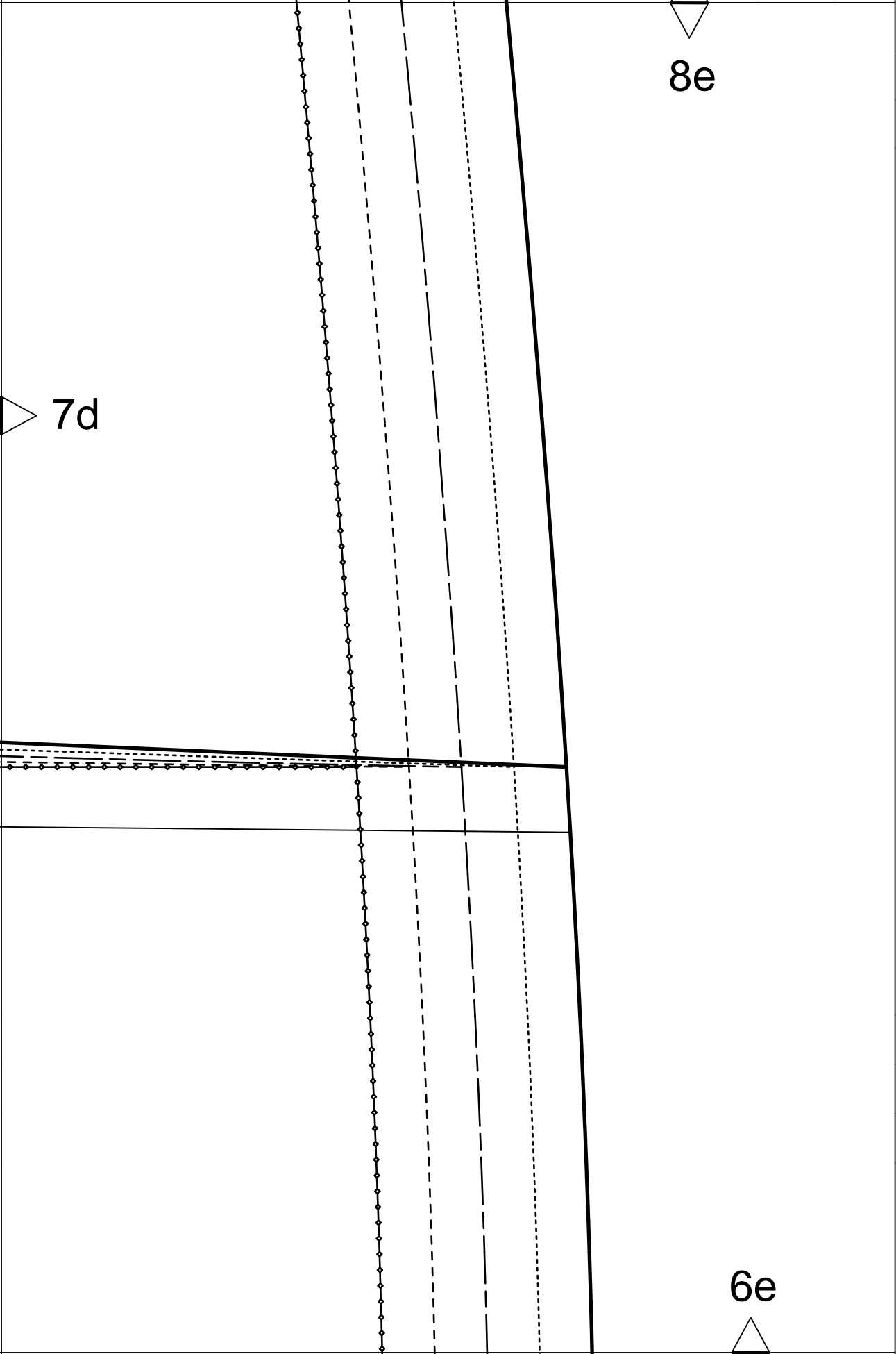
8d

7c

7d

Mod. 130

6d



10a

9a

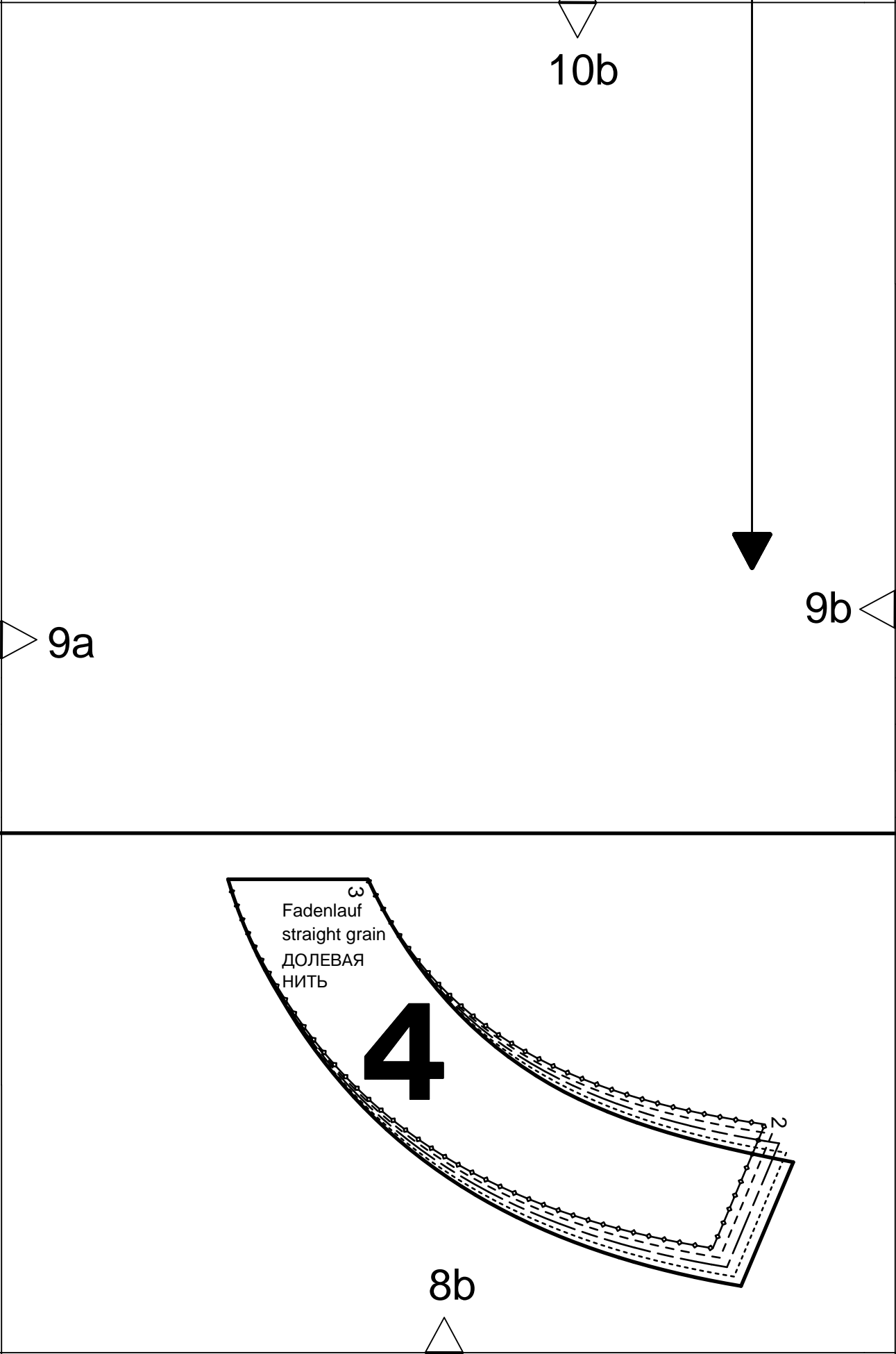
6.

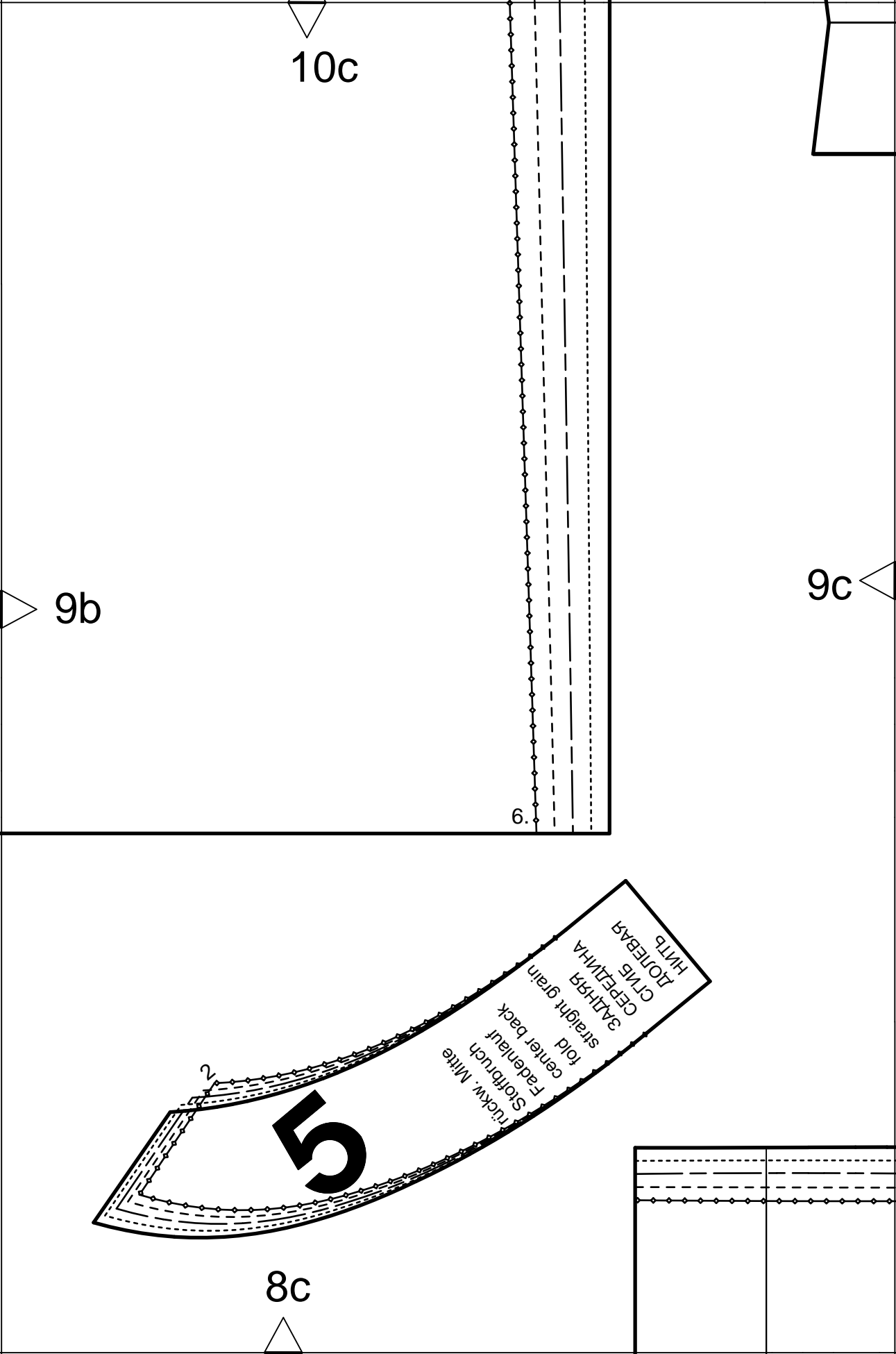
7

innen
inside
7
ИЗНУТРИ
С ИЗНАНОЧНОЙ
СТОРОНЫ

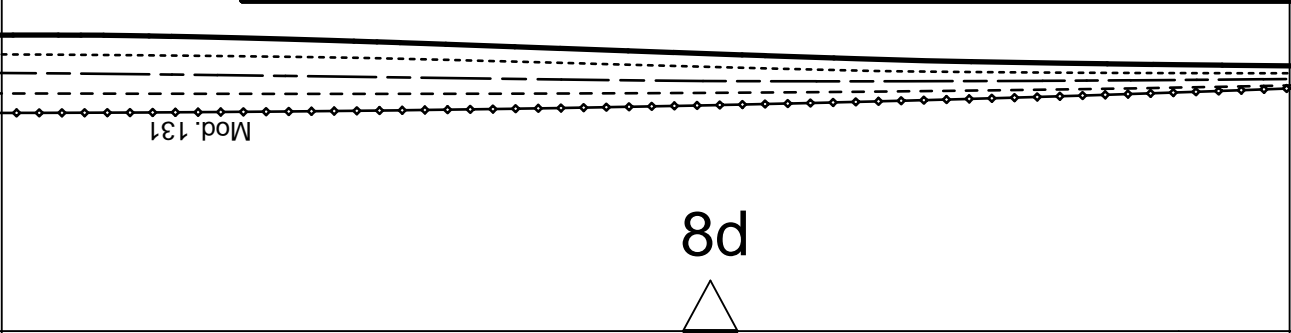
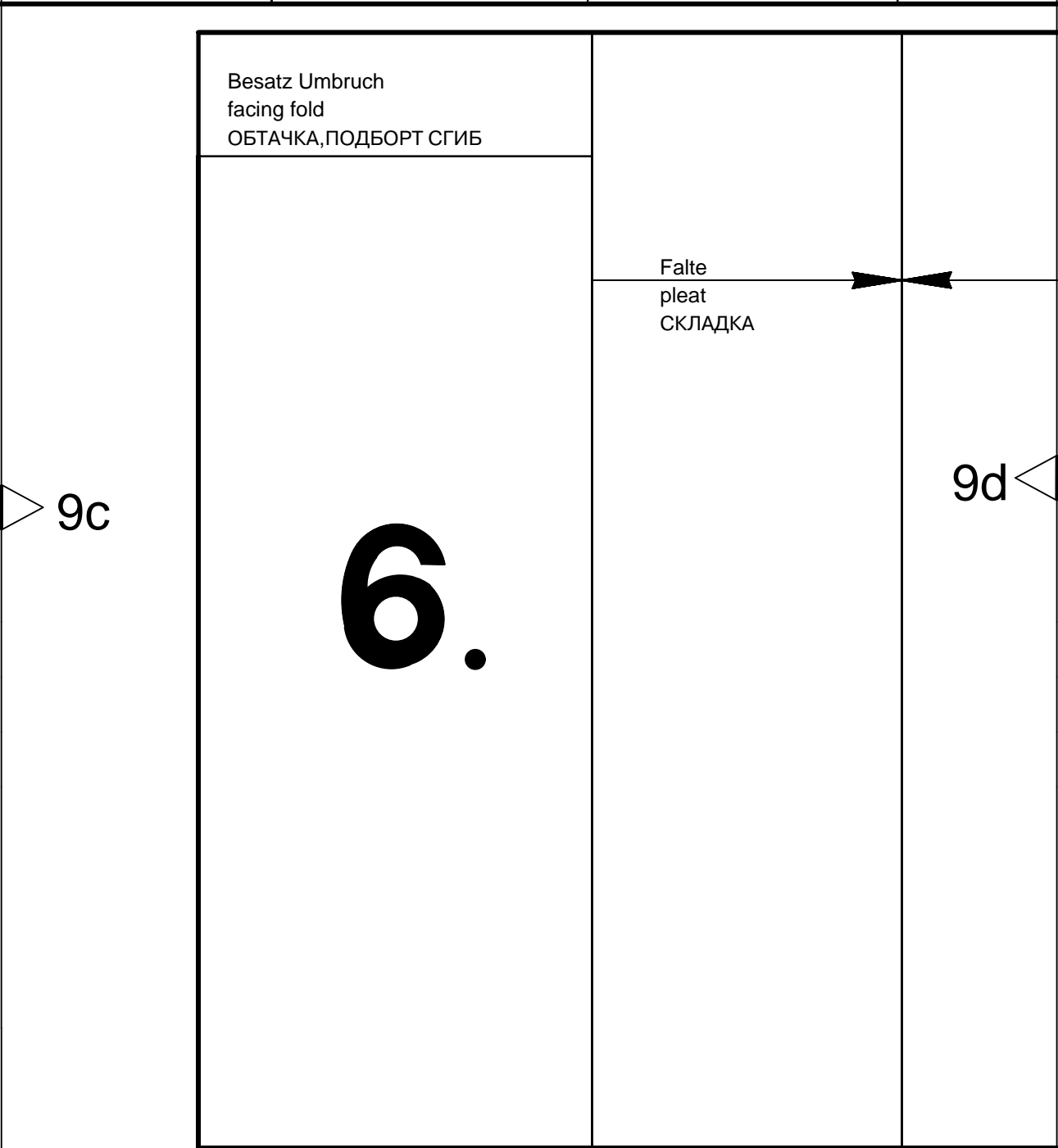
Fadenlauf
straight grain
ДОЛЕВАЯ НИТЬ

8a





		<div>▽</div> <div>10d</div>	



▽
10e

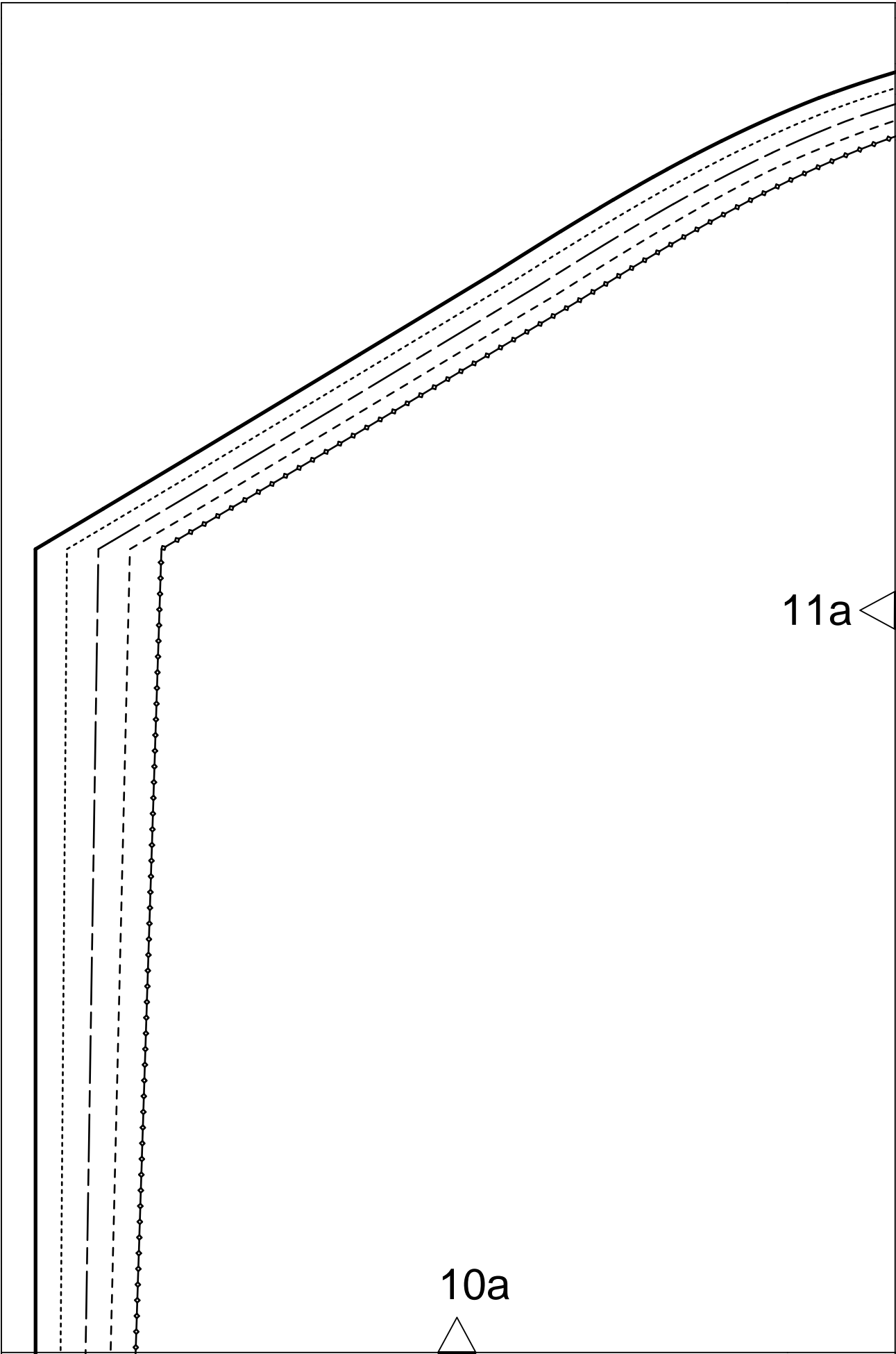
Besatz Umbruch
facing fold
ОБТАЧКА, ПОДБОРТ СГИБ

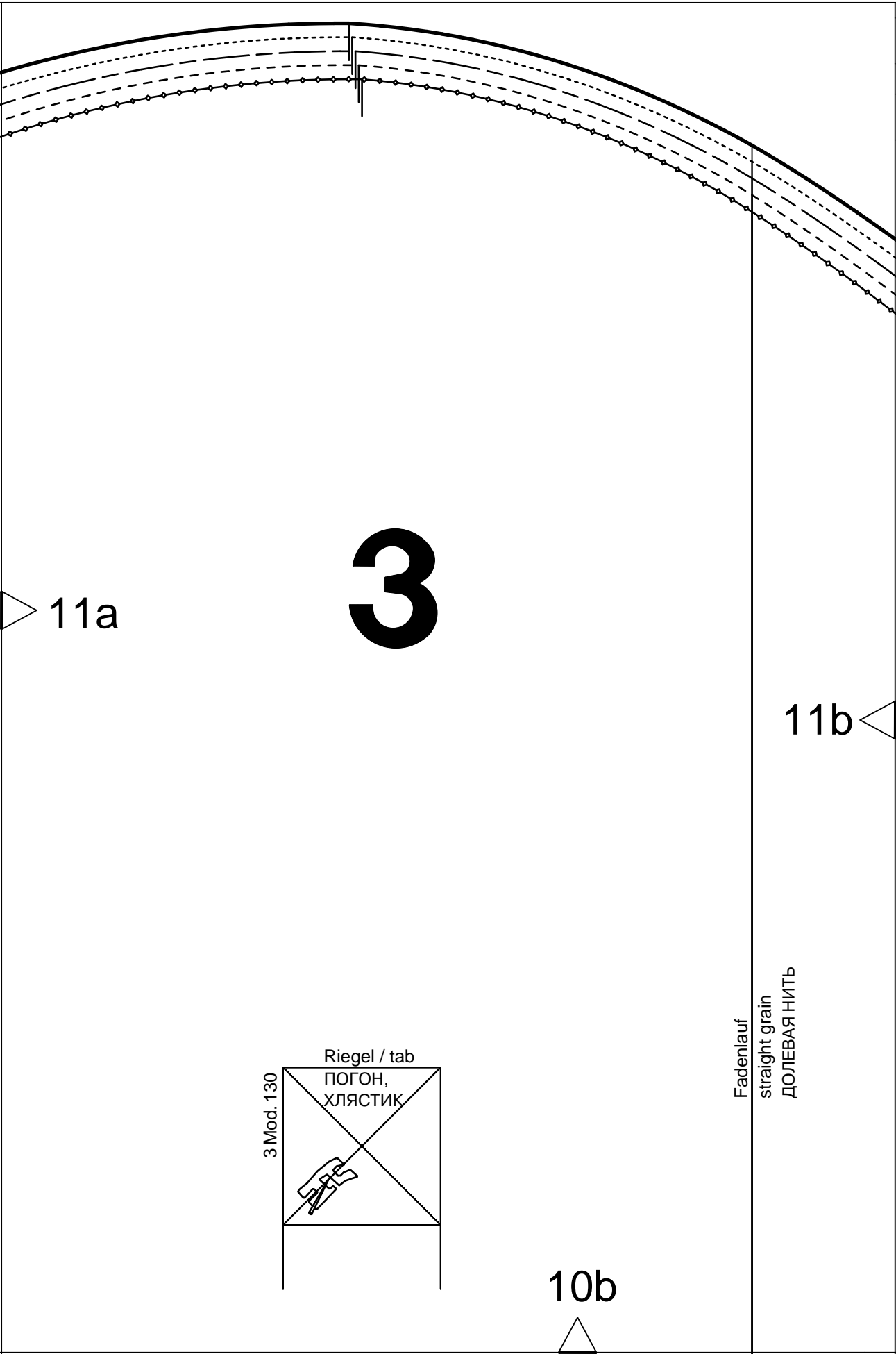
Fadenlauf
straight grain
ДОЛЕВАЯ НИТЬ

▽
9d

8e
▽

4





3

11a

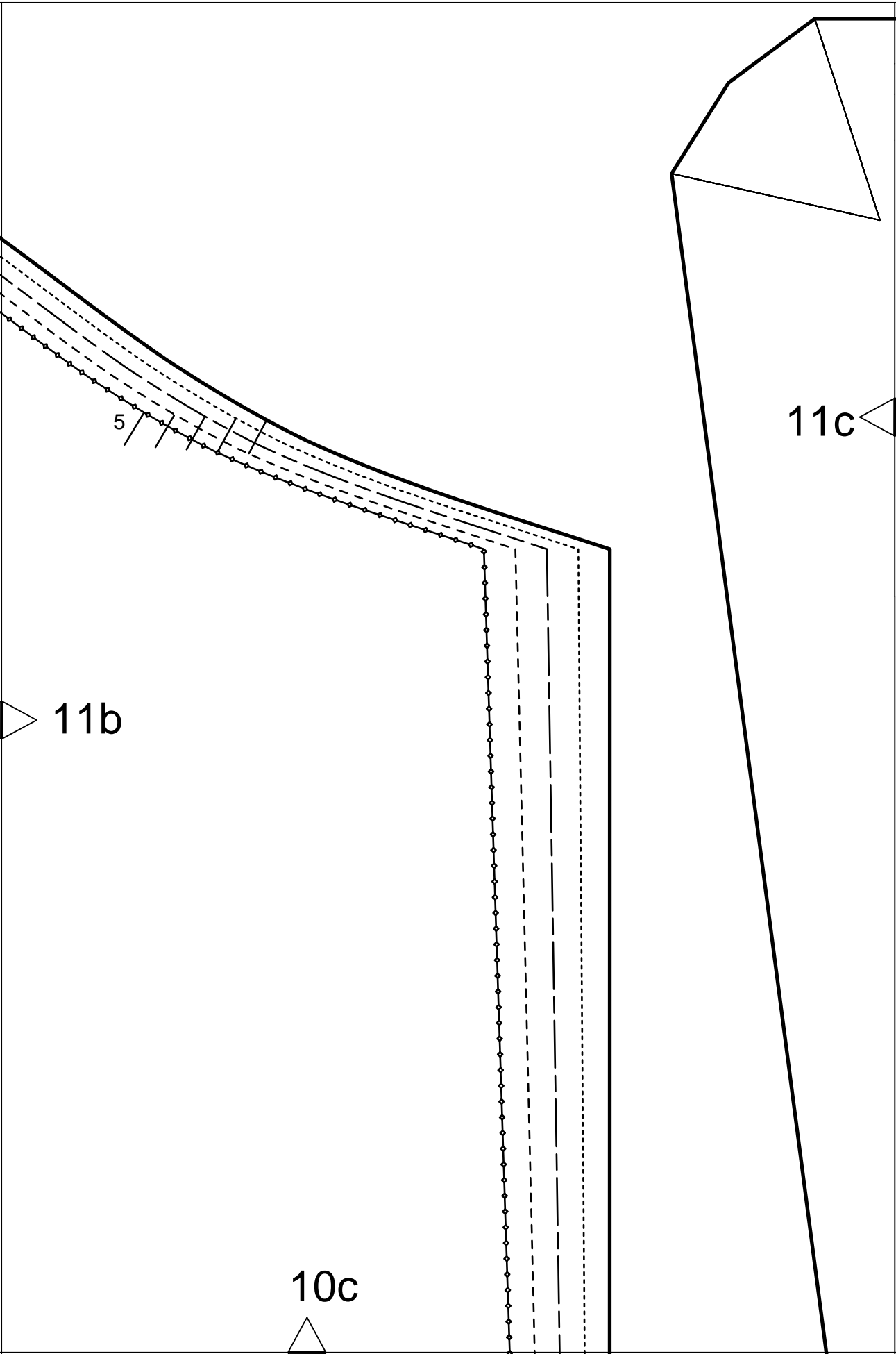
11b

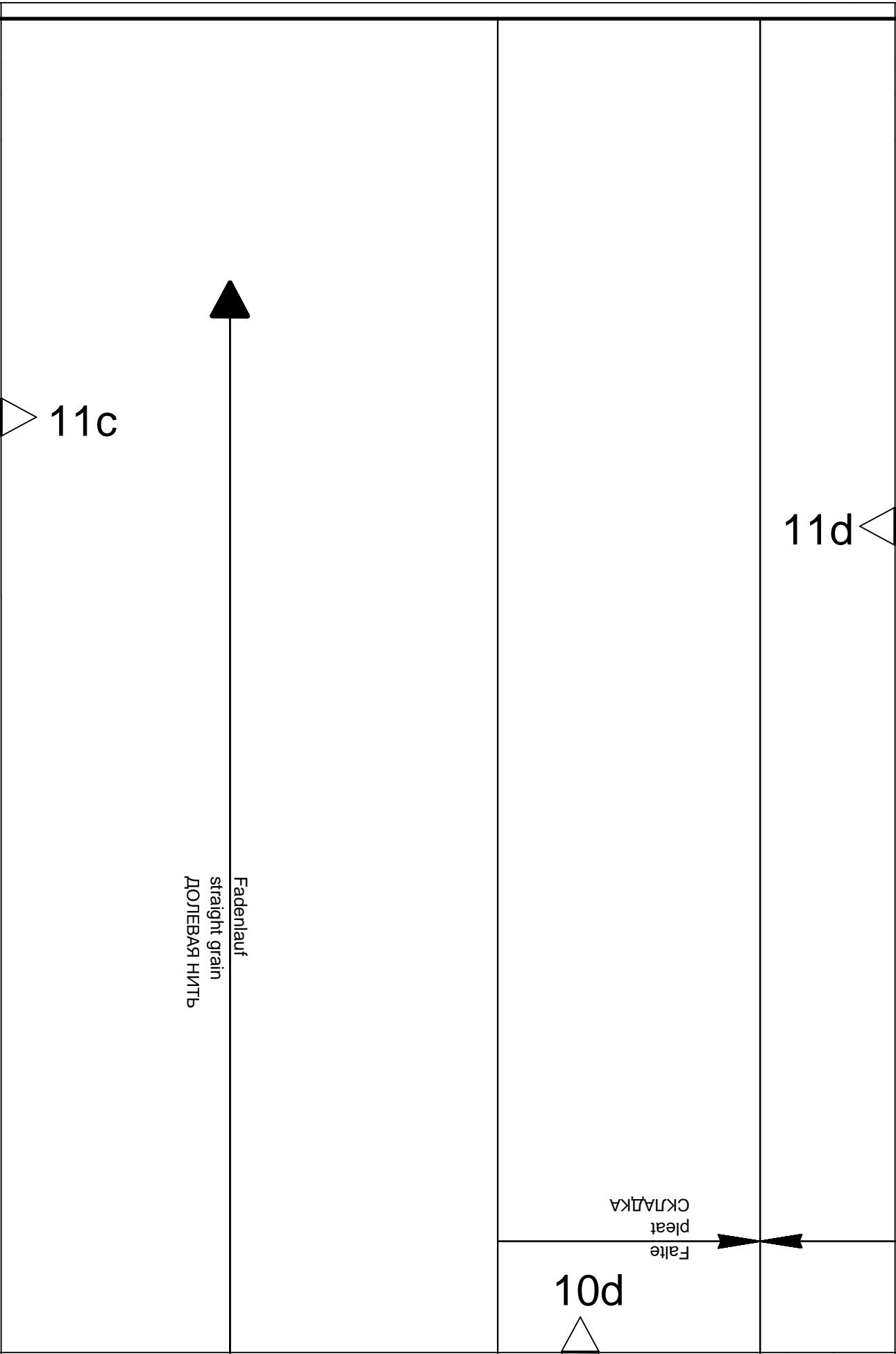
10b

3 Mod. 130

Riegel / tab
ПОГОН,
ХЛЯСТИК

Fadenlauf
straight grain
ДОЛЕВАЯ НИТЬ





10d

Falte
pleat
СКЛАДКА

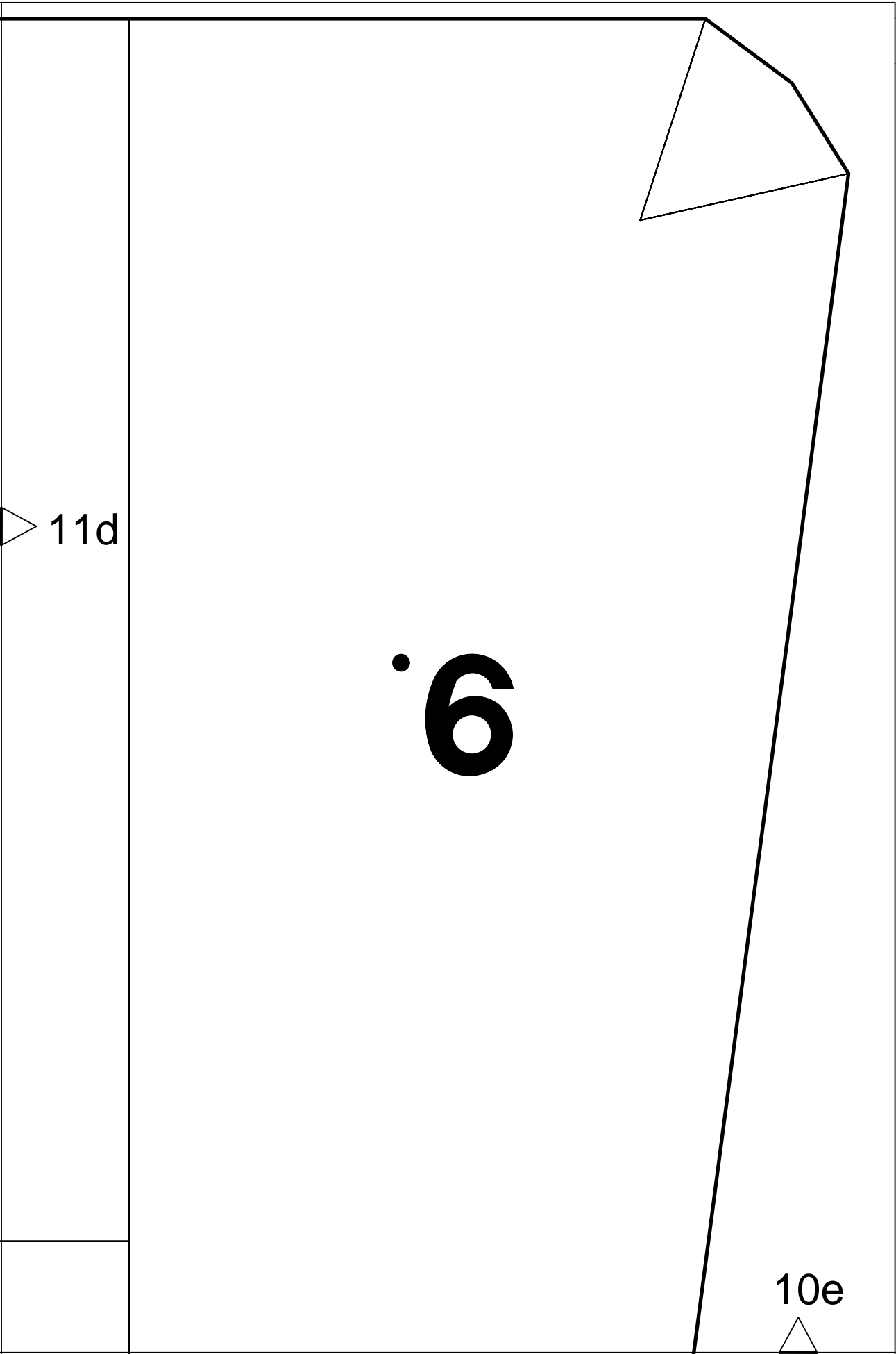
11d

11c

Fadenlauf

straight grain

ДОЛБЕВАЯ НИТЬ



6

11d

10e