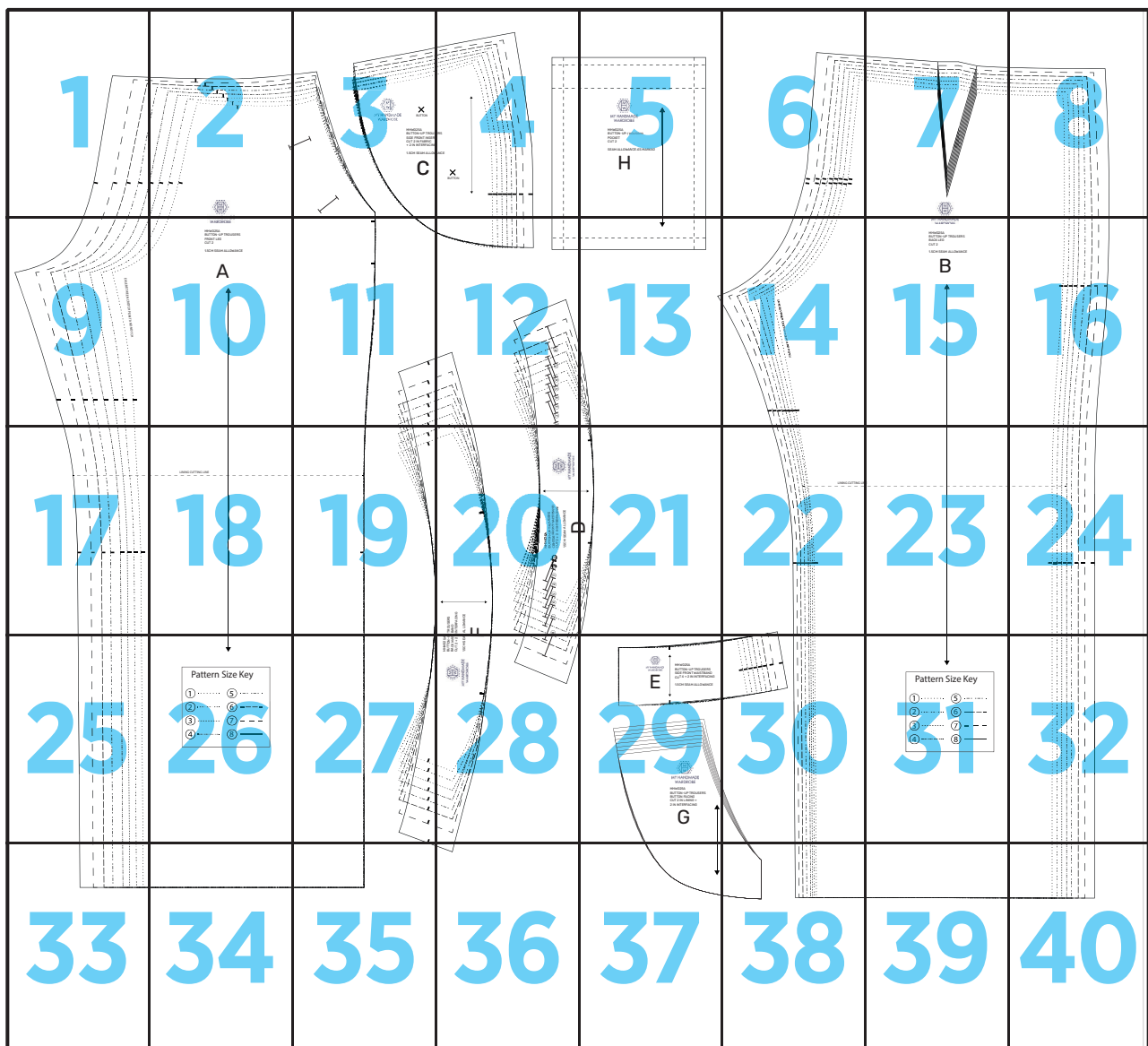
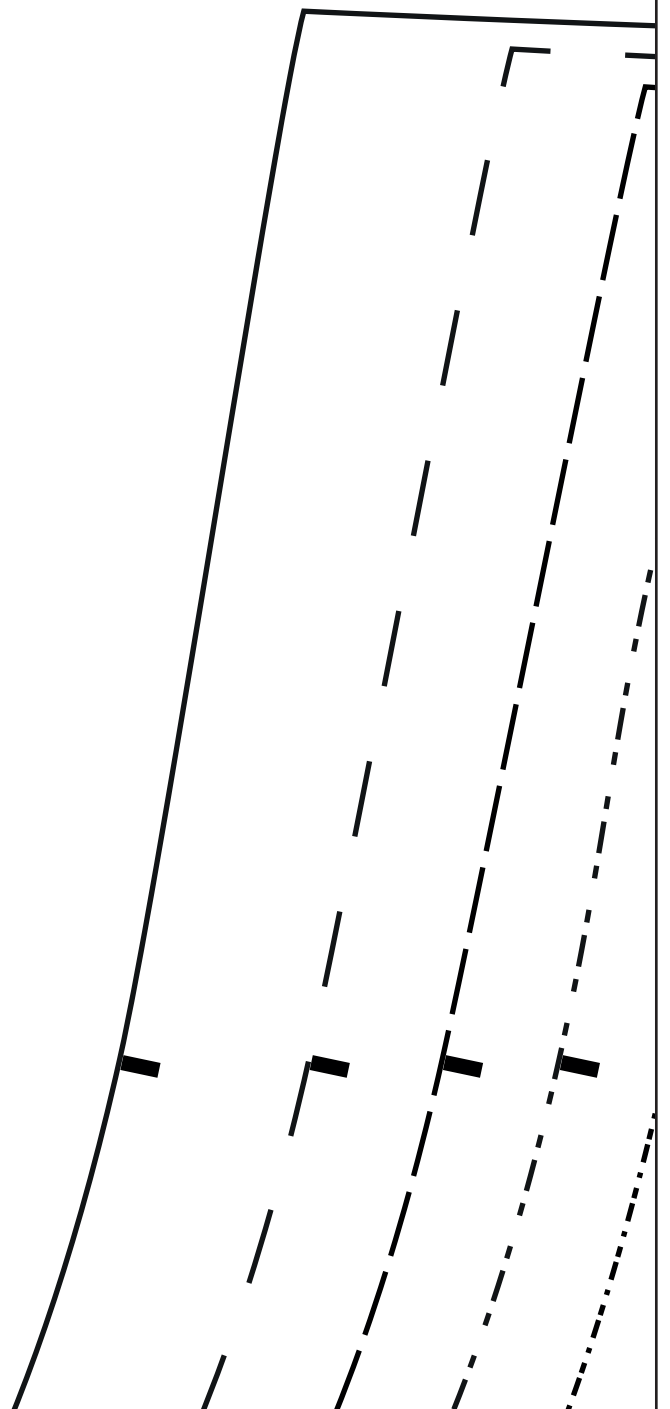


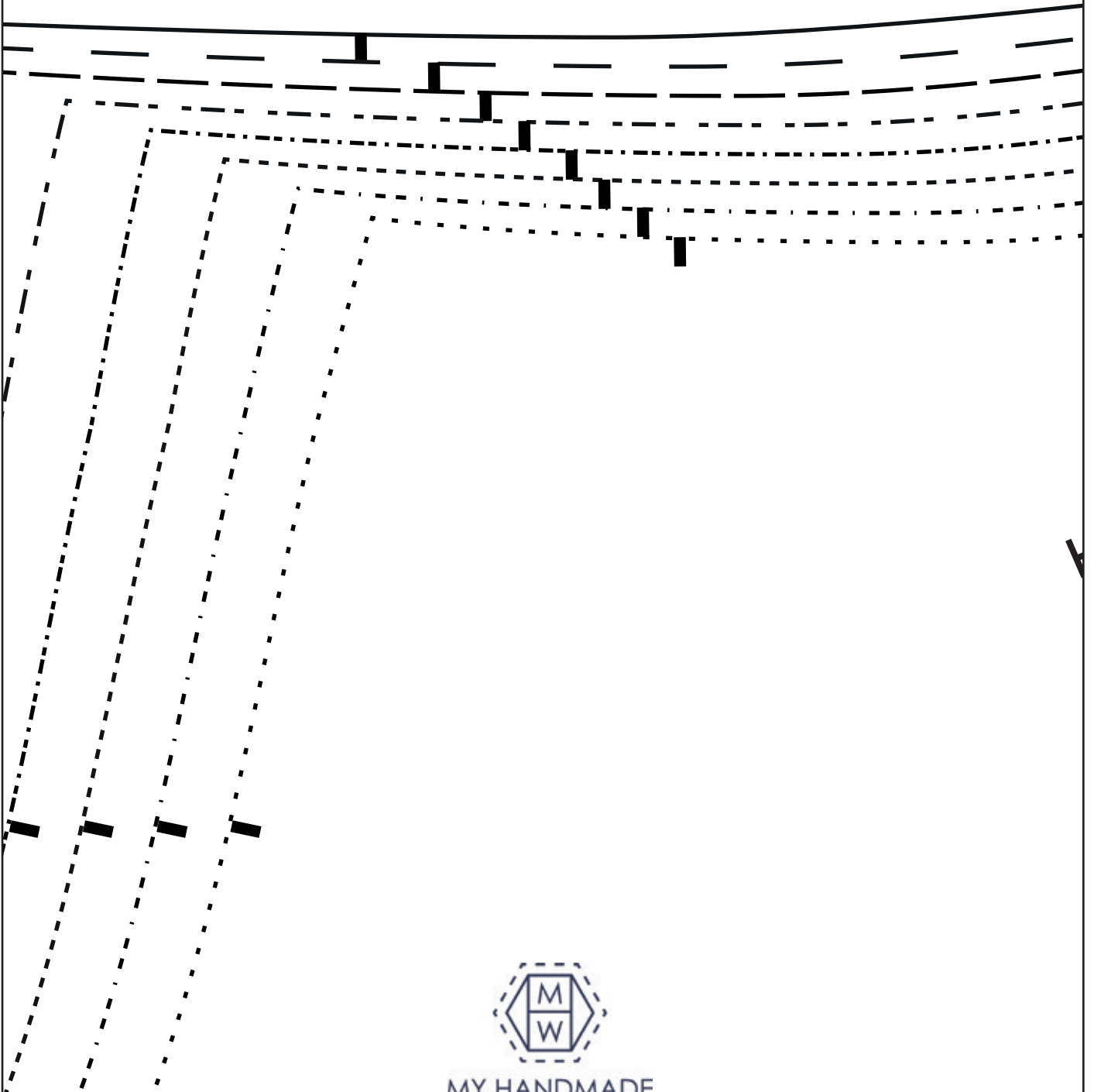
Crafty Buttoned Trousers



1



2



3



MY HANDMADE
WARDROBE



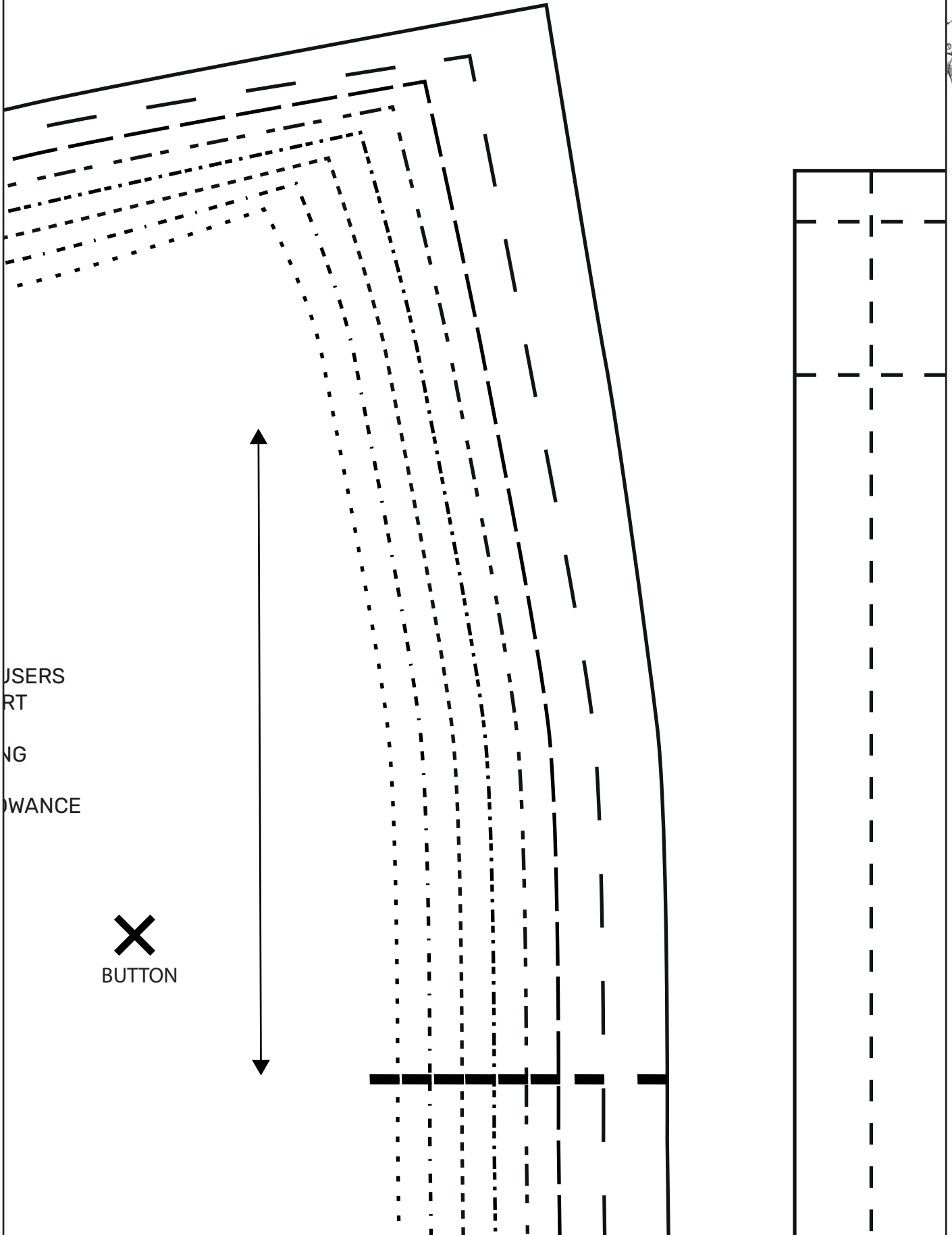
BUTTON

MHW025A
BUTTON-UP TROUSERS
SIDE FRONT INSEAM
CUT 2 IN FABRIC
+ 2 IN INTERFACING

1.5CM SEAM ALLOWANCE

C

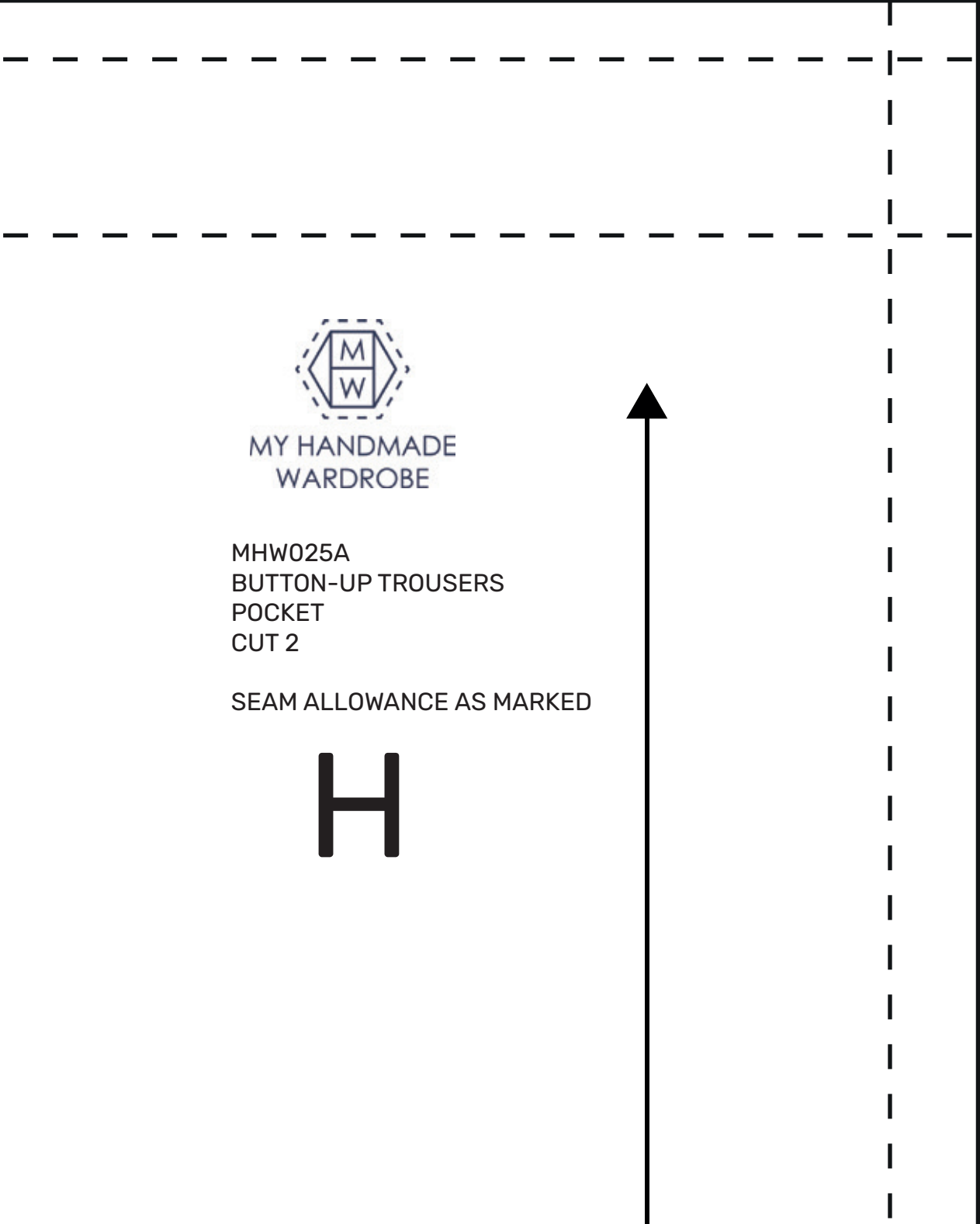
4

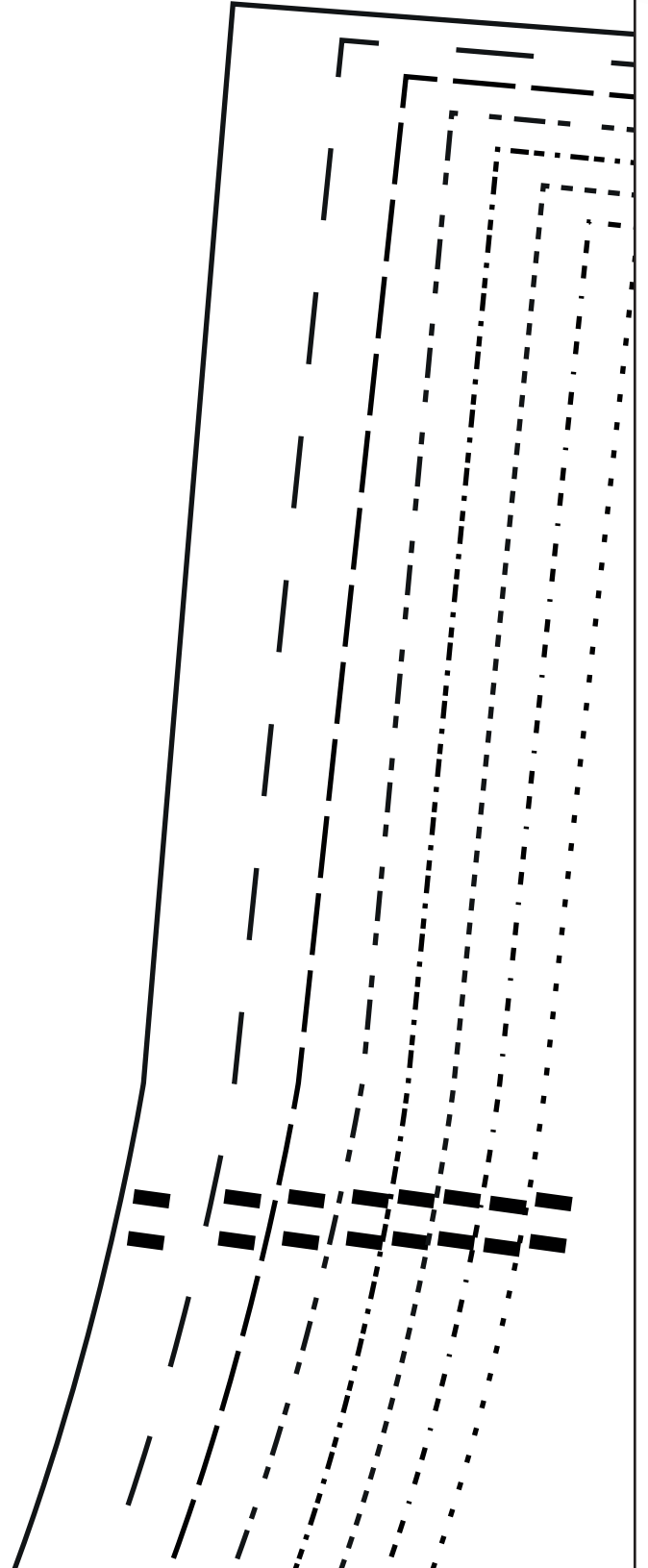


USERS
RT
NG
WANCE

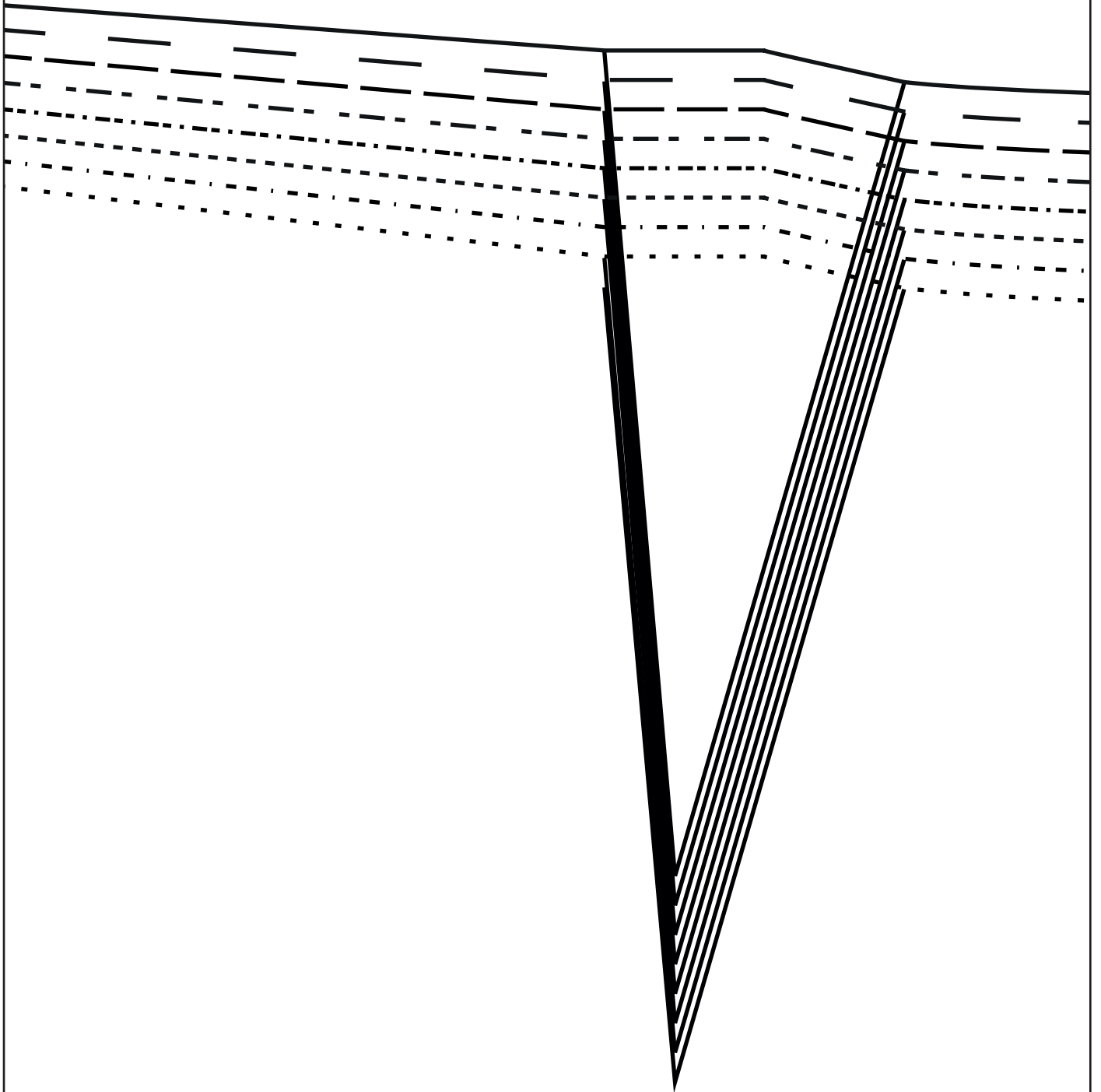
X
BUTTON

5

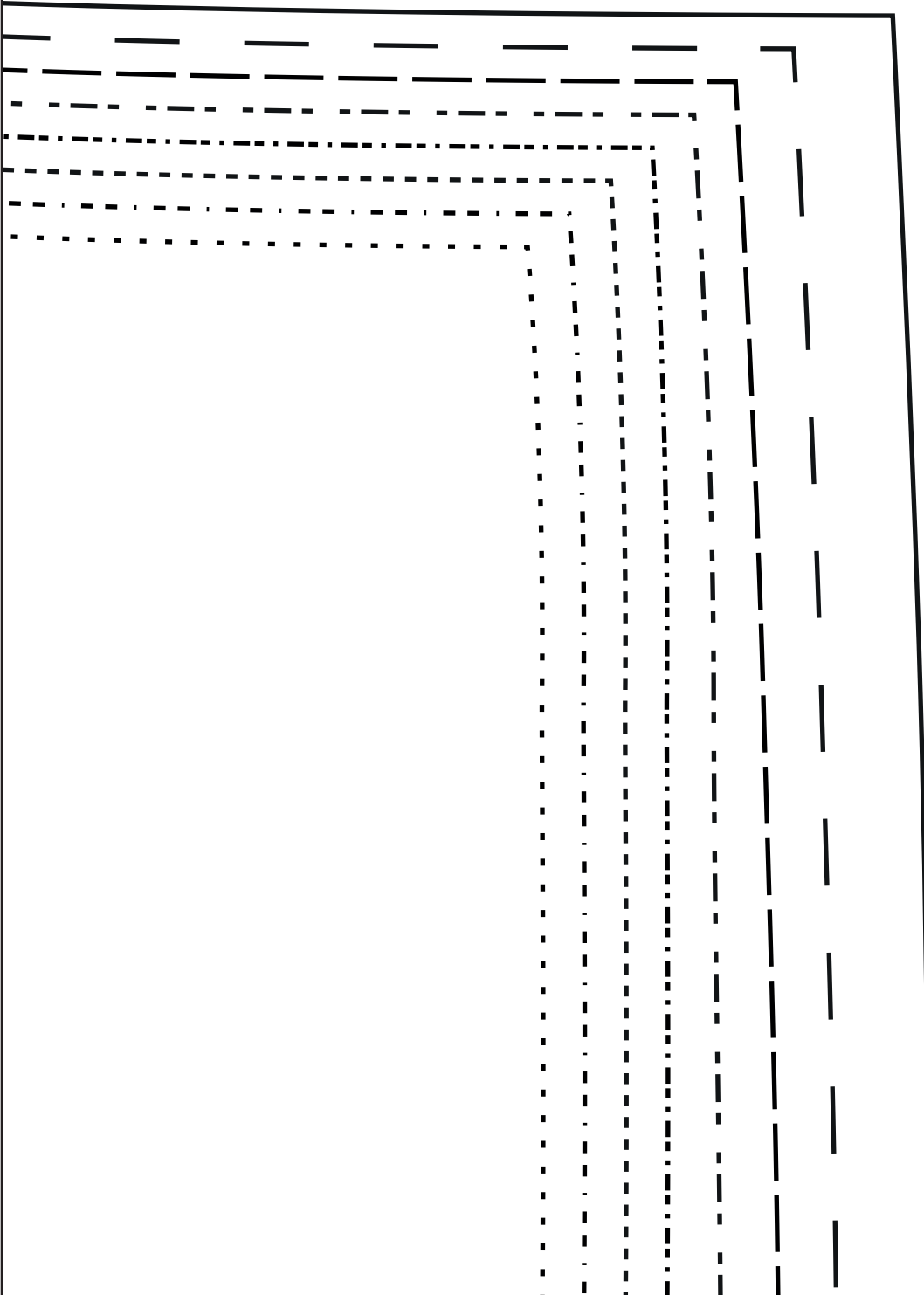




7



MY HANDMADE





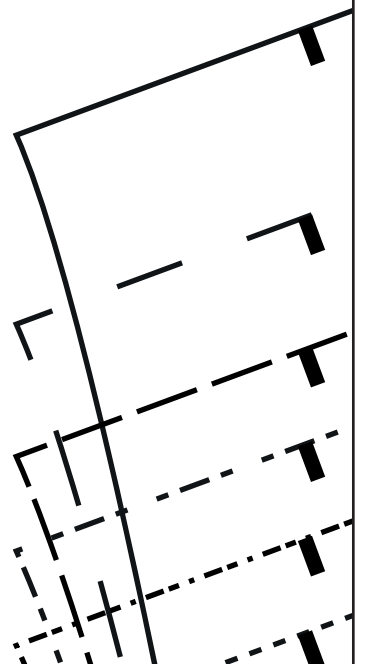
EASE BETWEEN CROTCH POINT AND NOTCH

MHW025A
BUTTON-UP TROUSERS
FRONT LEG
CUT 2

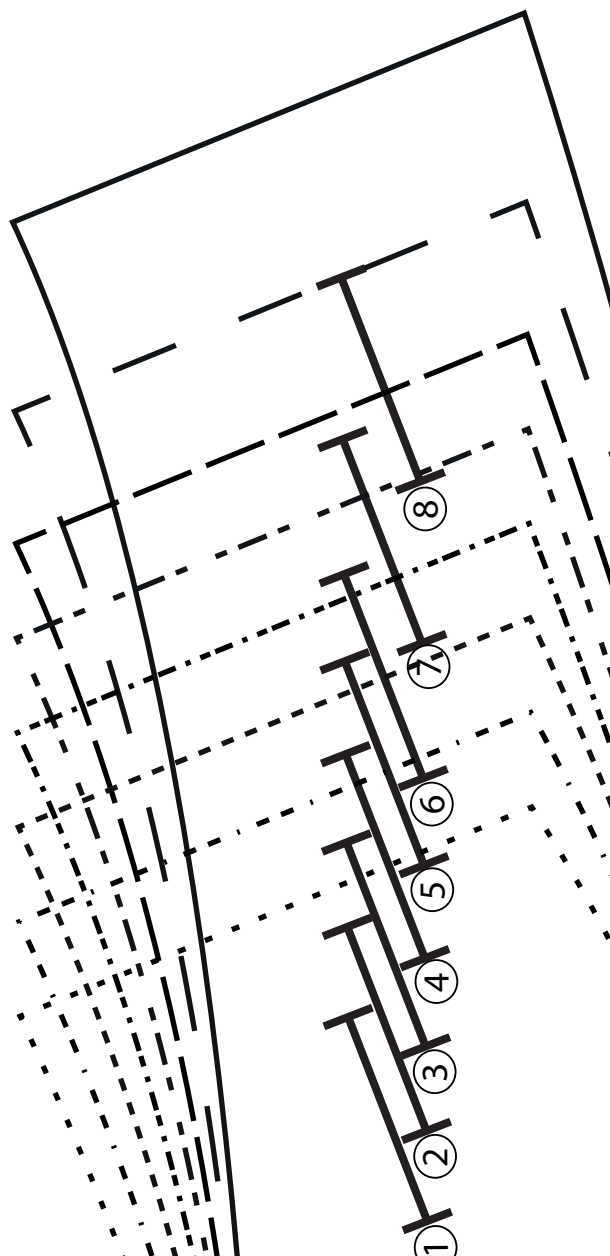
1.5CM SEAM ALLOWANCE

A

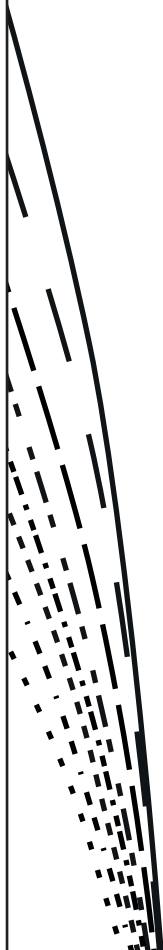




12



13





EASE BETWEEN CROTCH POINT AND NOTCH

15

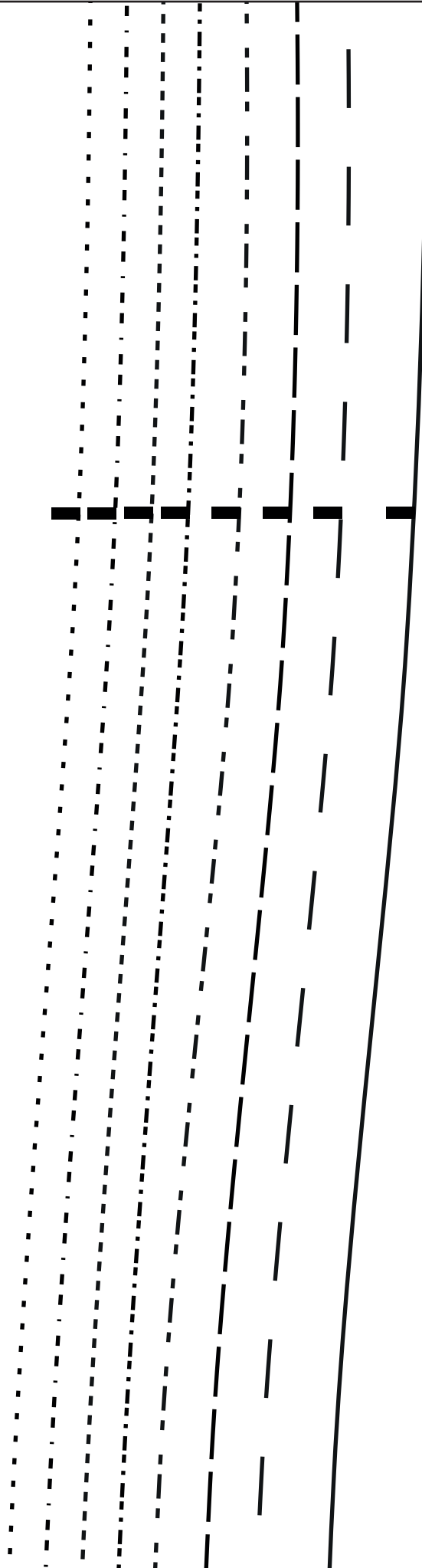
MY HANDMADE
WARDROBE

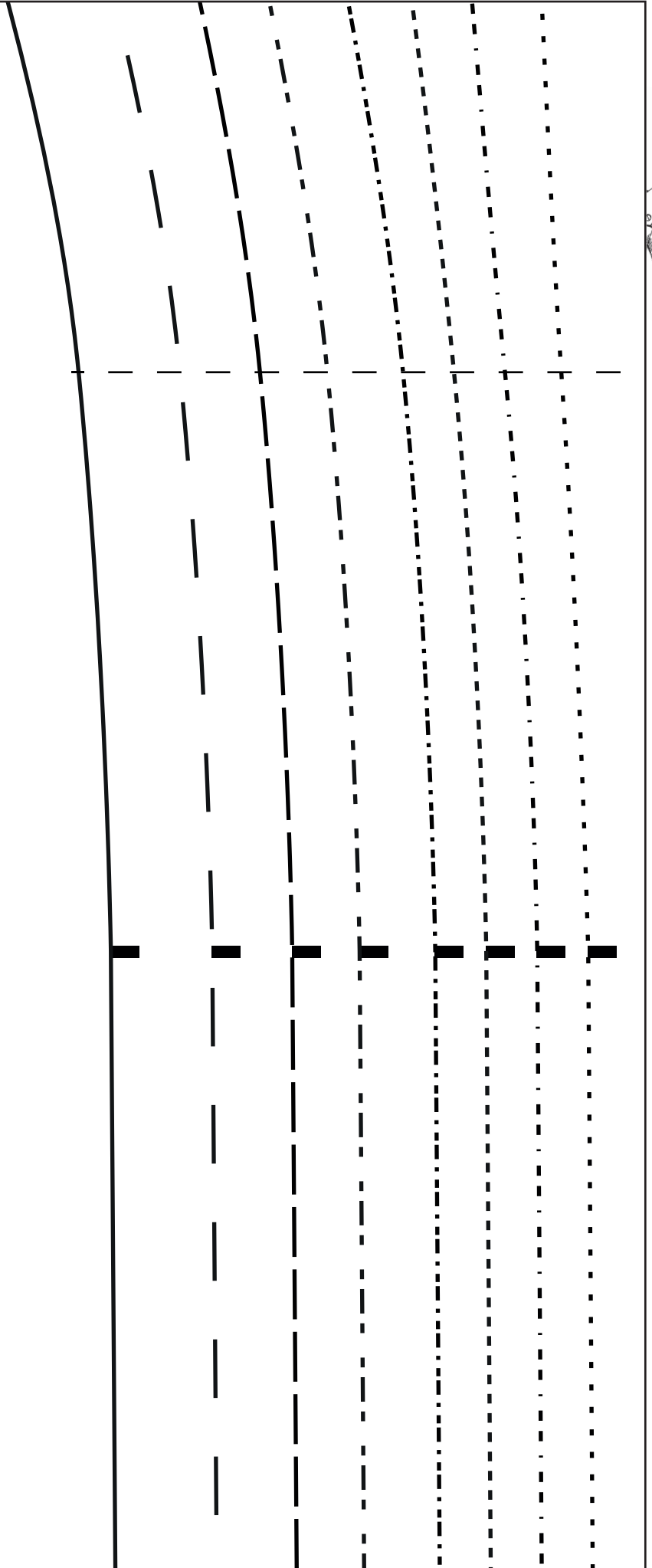
MHW025A
BUTTON-UP TROUSERS
BACK LEG
CUT 2

1.5CM SEAM ALLOWANCE

B



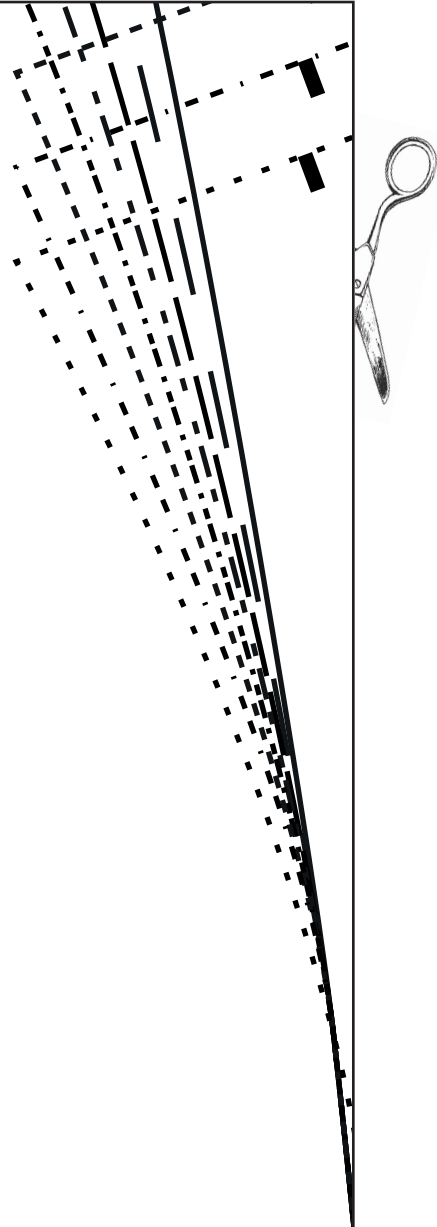




LINING CUTTING LINE



19



UP TROUSERS
T BAND
N INTERFACING
1 ALLOWANCE

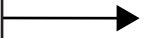
MHW025A
BUTTON-UP TROUSERS
CENTRE FRONT WAISTBAND
CUT 2 + 2 IN INTERFACING
1.5CM SEAM ALLOWANCE



MY HANDMADE
WARDROBE



21



D



LINING CUTTING

23



6 LINE

24



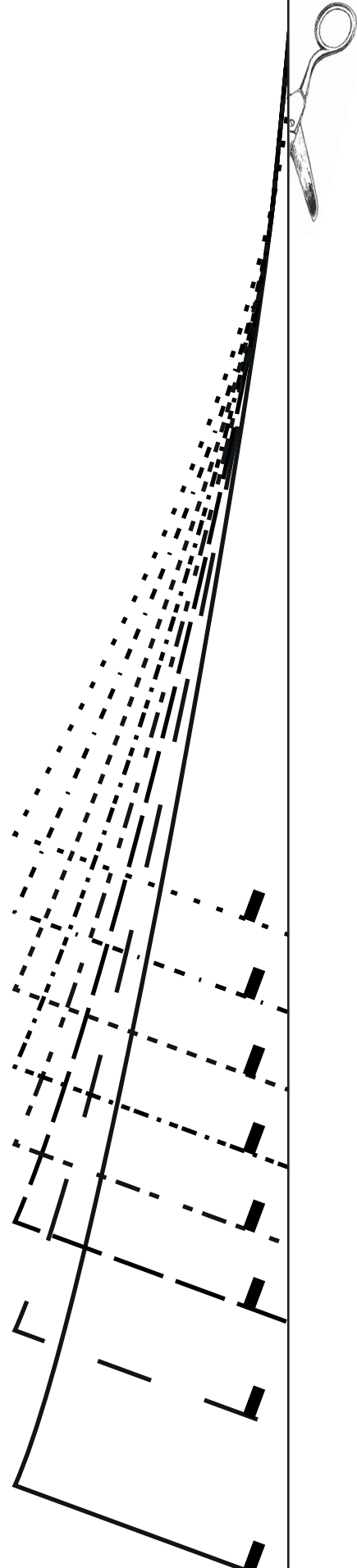
25





Pattern Size Key

①	⑤
②	⑥	-----
③	-----	⑦	- - -
④	⑧	————

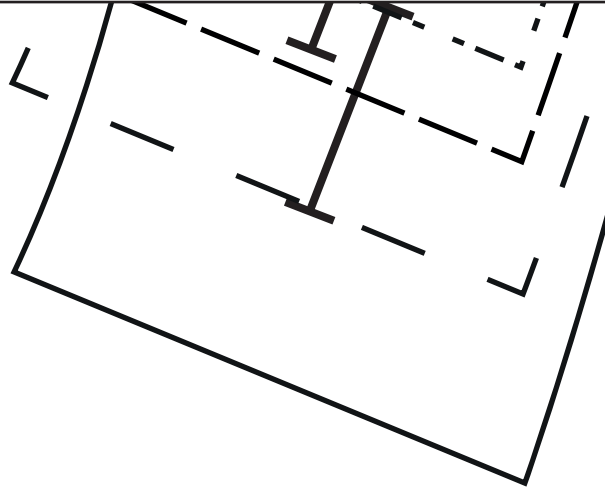


28

MHV 0 1/2 A
BUTTON-UP
BACK WAIST
CUT 2 + 2 IN
1.5CM SEAM

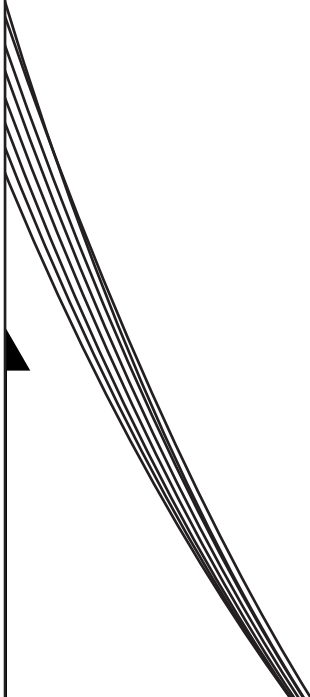
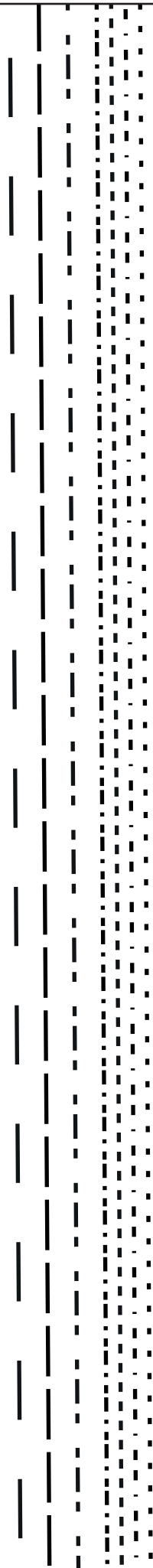
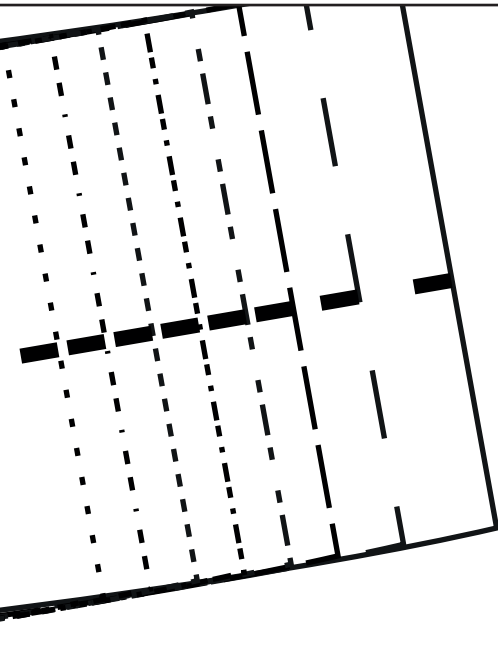


MY HANDMADE
WARDROBE





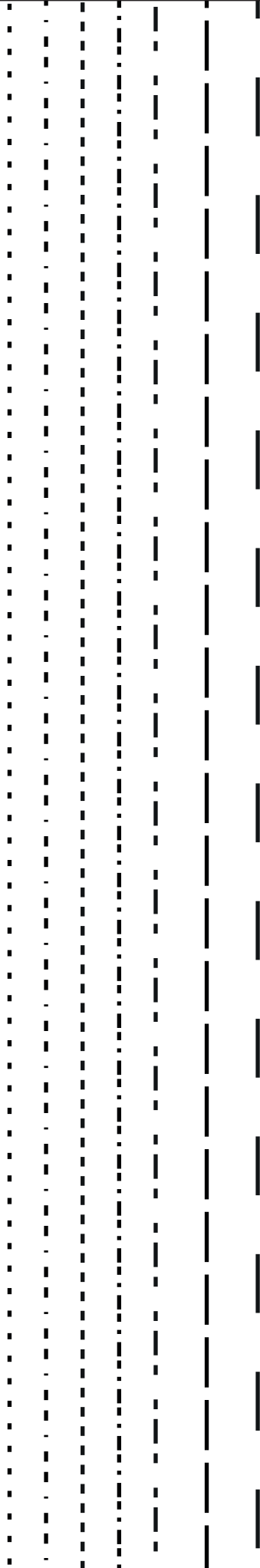
30



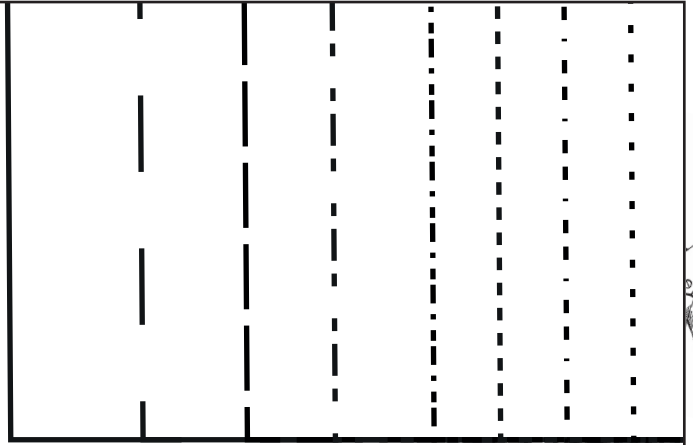


Pattern Size Key

① ⑤ .-.-.-.-.
② ⑥ - - - - -
③ ⑦ - - - - -
④ ⑧ —————



33



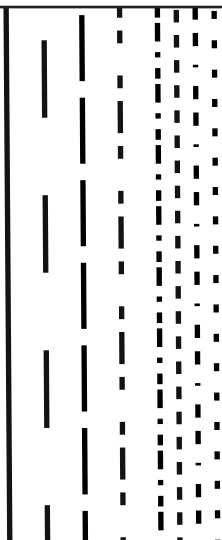








38





40

