

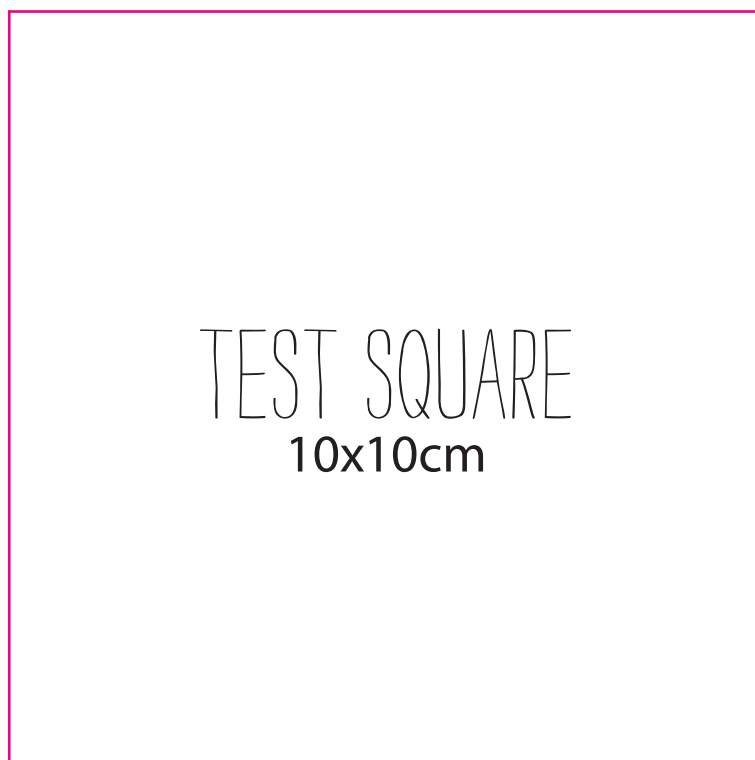
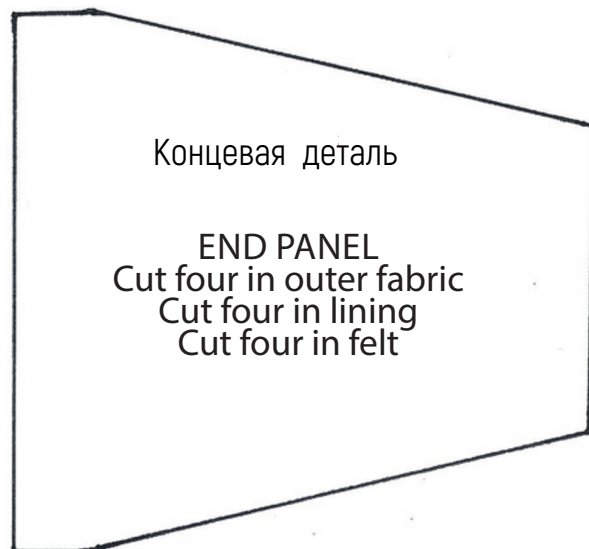
# Швейная комната



# GINGHAM BAG

PAGE 57

ACTUAL SIZE

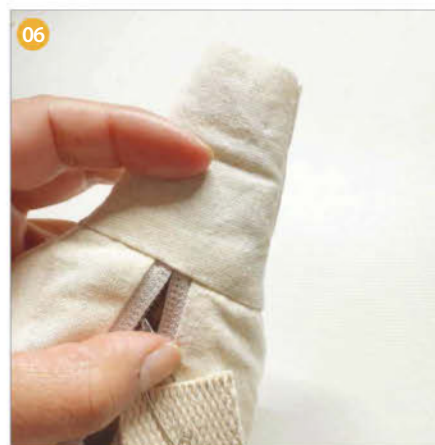
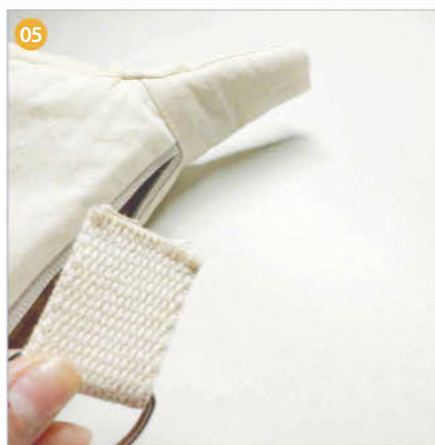
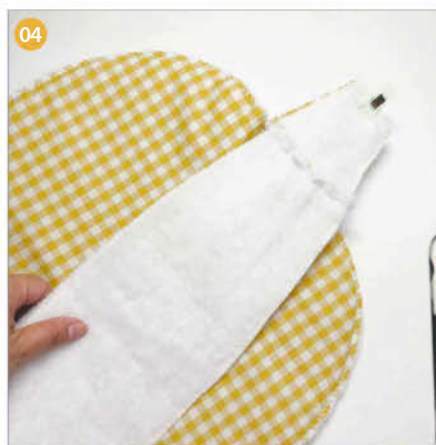


A woman with blonde hair, smiling and looking upwards, is wearing a white t-shirt with a black line drawing of a leaf and the word 'more' in cursive. She is holding a yellow and white checkered crossbody bag with a wide, adjustable strap. The background is a plain, light-colored wall.

# Compact & groovy

Sew **Maya Pereda**'s trendy and practical gingham crossbody bag with adjustable strap – it can hold more than you think!





## YOU WILL NEED

- Outer fabric: 53x55cm
- Lining fabric: 53x55cm
- Felt: 53x55cm
- Zipper: 35cm
- Strap webbing: 100cm
- Metal D-ring: 3cm
- Slider
- Swivel clasp loop
- Matching thread
- Basic sewing kit

## NOTES

- Download the templates from [gathered.how/ss-templates](https://gathered.how/ss-templates)
- Seam allowance: 1cm.
- Adjust strap length as needed before cutting.

## RECOMMENDED FABRICS

- Outer: Cotton, canvas, velvet, waterproof fabric.
- Lining: Lightweight cotton or satin.

## CUTTING OUT

Using the template, cut pattern pieces from the outer fabric, lining fabric, and felt. Fold outer fabric in half before placing pattern pieces to ensure symmetrical cuts. Press felt onto the WS of each outer piece after cutting, and secure with a zigzag stitch.

## PREPARING THE PANELS

**Step one.** Fold the outer Base Panel in half and notch the centre point. Then fold each side toward the centre until the piece matches the width of the End Panel. Do the same for the lining fabrics. **01**  
**Step two** Stitch each Base Panel to its corresponding End Panel. **02**

## ADDING THE ZIP

**Step one** Place the zip right side (RS) facing the Side Panel. Then layer the lining RS down on top. Align edges and sew all layers together with a zipper foot. Repeat for the other side. **03**  
**Step two** Open the fabric layers flat. Pin the remaining End Panels RS facing to the corners of both outer and lining fabric. Sew in place.

## ASSEMBLING THE BAG BODY

**Step one** Align the Base Panel with the Side Panels. Use clips to hold together all four layers. Sew along the edges, leaving an 8 cm opening on one side of the lining for turning the bag. **04**

**TIP:** Sew slowly and use a walking foot if needed to prevent the layers from shifting.

## TURNING THE BAG

**Step one** Turn the bag RS out through the turning gap, leaving the lining facing outward.

## MAKING THE STRAPS

**Step one** Cut two strap pieces: 10 cm (for D-ring), 90 cm (adjustable strap). Slide the D-ring onto the short strap, fold it in half, and sew if desired to secure its position. **05**  
 Attach the D-ring strap to one inner side of the bag and sew in place, reinforcing the seam multiple times. **06**  
 Repeat on the opposite end of the bag with the longer strap.

## FINISHING TOUCHES

**Step one** Attach the adjustable buckle by placing the strap through the three buckles and sewing the extremes of the strap in place.  
**Step two** Close the lining opening with a slip stitch. Press with an iron to smooth the seams.

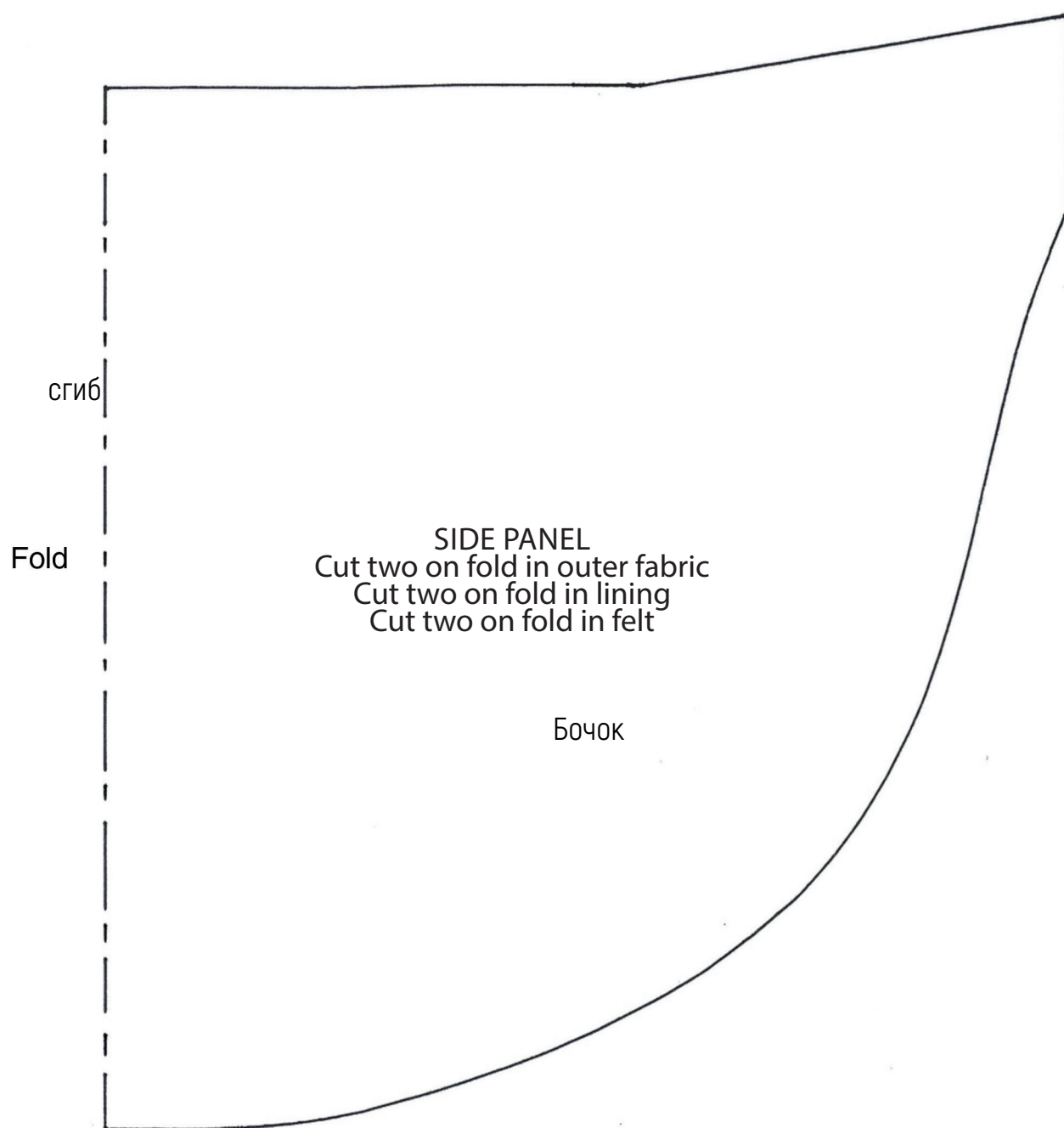


Originally from Peru, Maya (she/her) is a London-based designer who runs her own accessories brand L'Atelier de Maya. @latelier\_de\_maya

# GINGHAM BAG

PAGE 57

ACTUAL SIZE



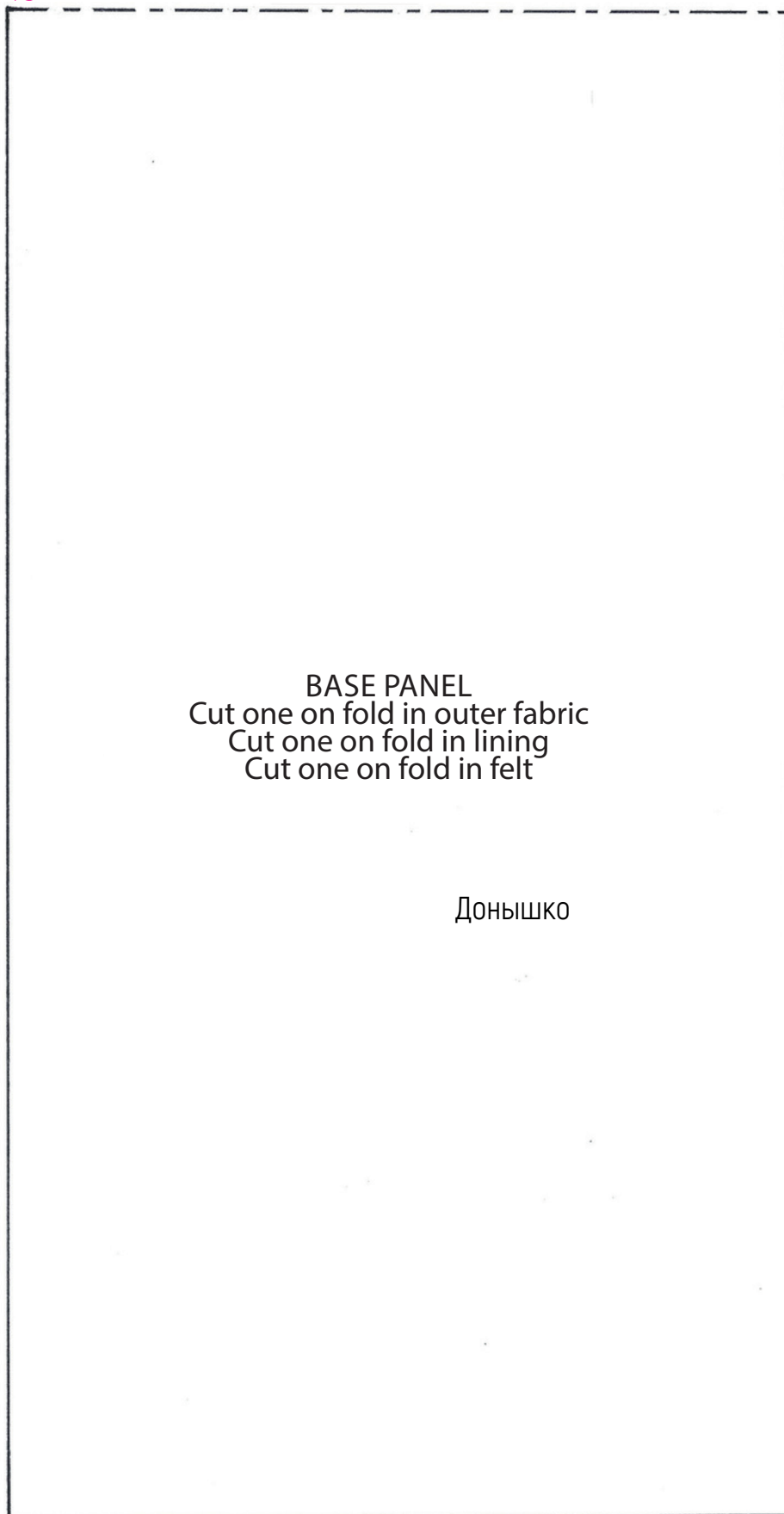
# GINGHAM BAG

PAGE 57

ACTUAL SIZE

Fold

Сгиб



BASE PANEL  
Cut one on fold in outer fabric  
Cut one on fold in lining  
Cut one on fold in felt

Донышко