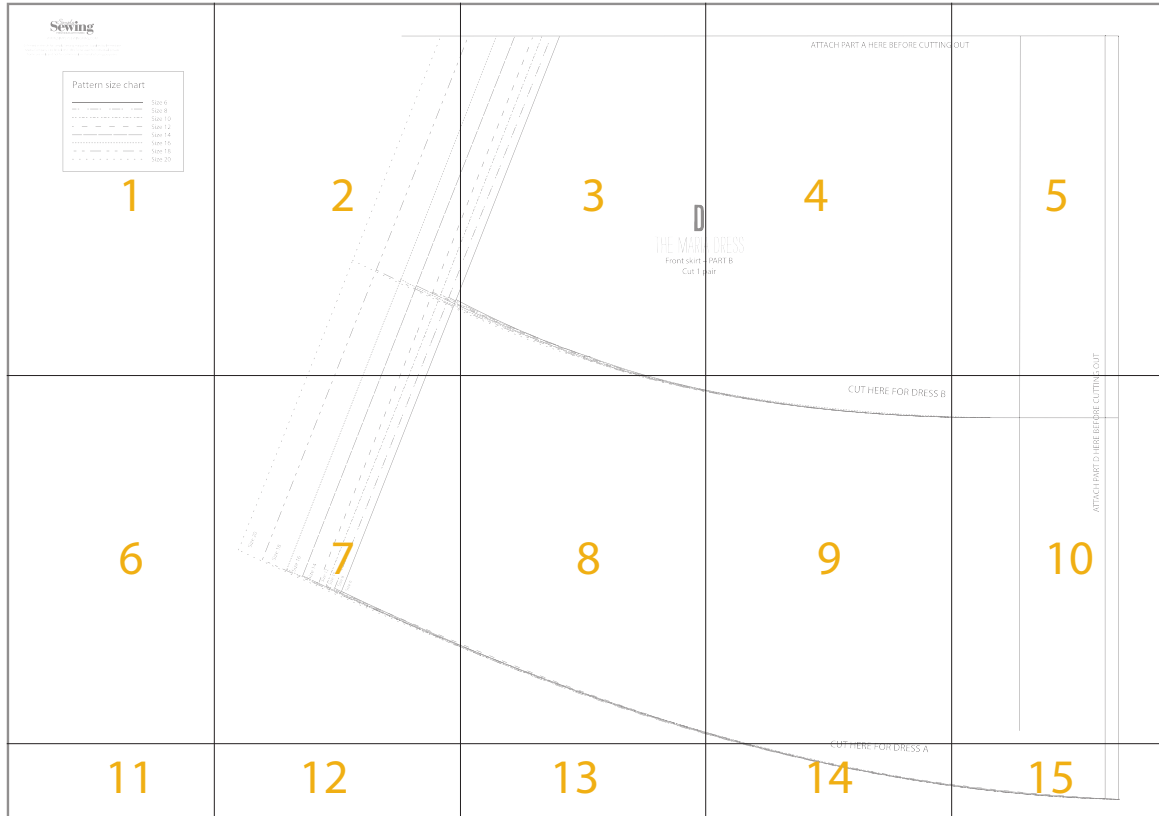


THE MARIA DRESS

HOW TO PRINT THIS PATTERN

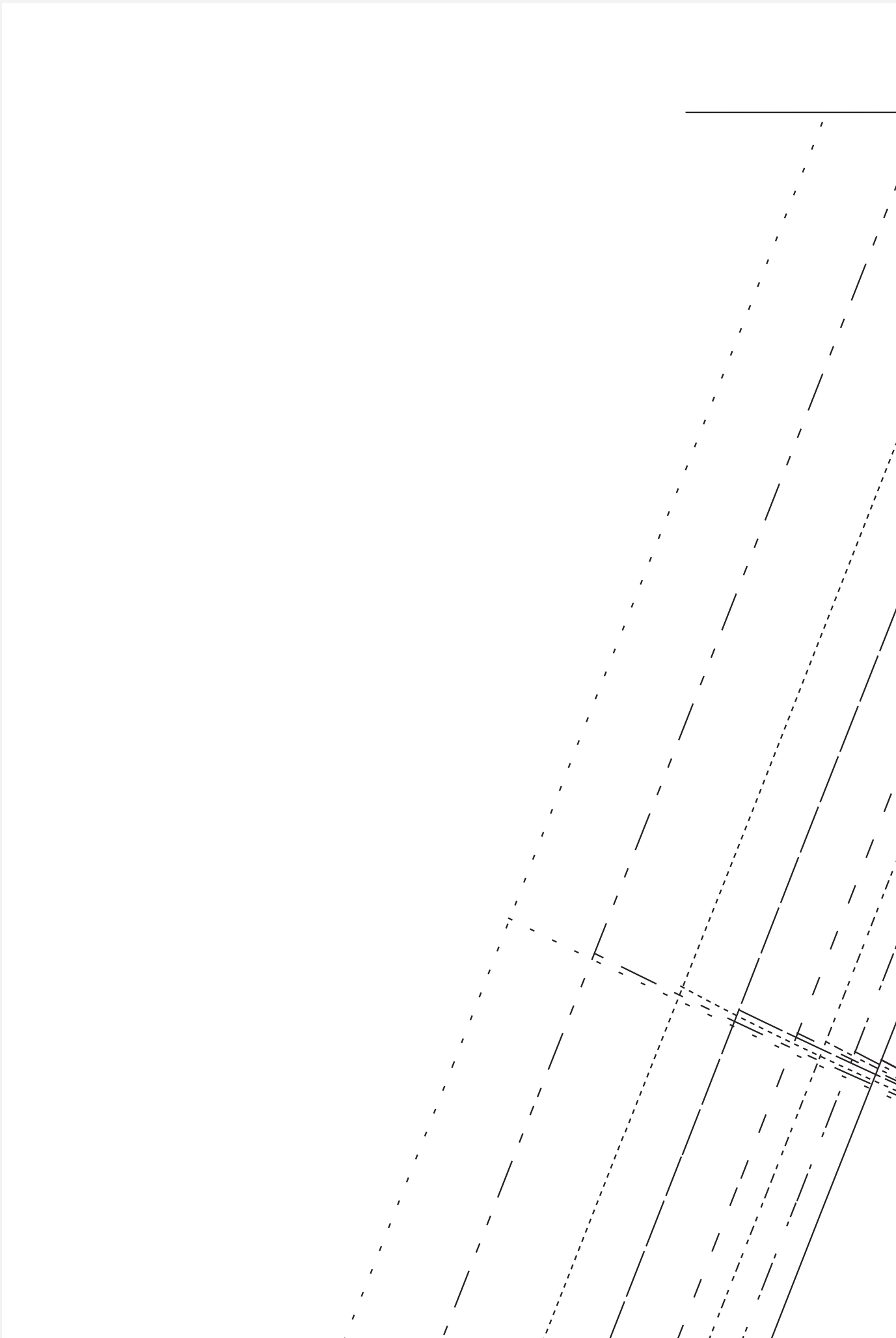
Print out this 30-page PDF on to A4 paper. Trim away the shaded border from each page and position the pages as below to assemble the pattern...



Pattern size chart

_____	Size 6
- - - - -	Size 8
- - - - -	Size 10
- - - - -	Size 12
_____	Size 14
- - - - -	Size 16
- - - - -	Size 18
- - - - -	Size 20

TEST SQUARE
10x10cm





D

THE MARIA

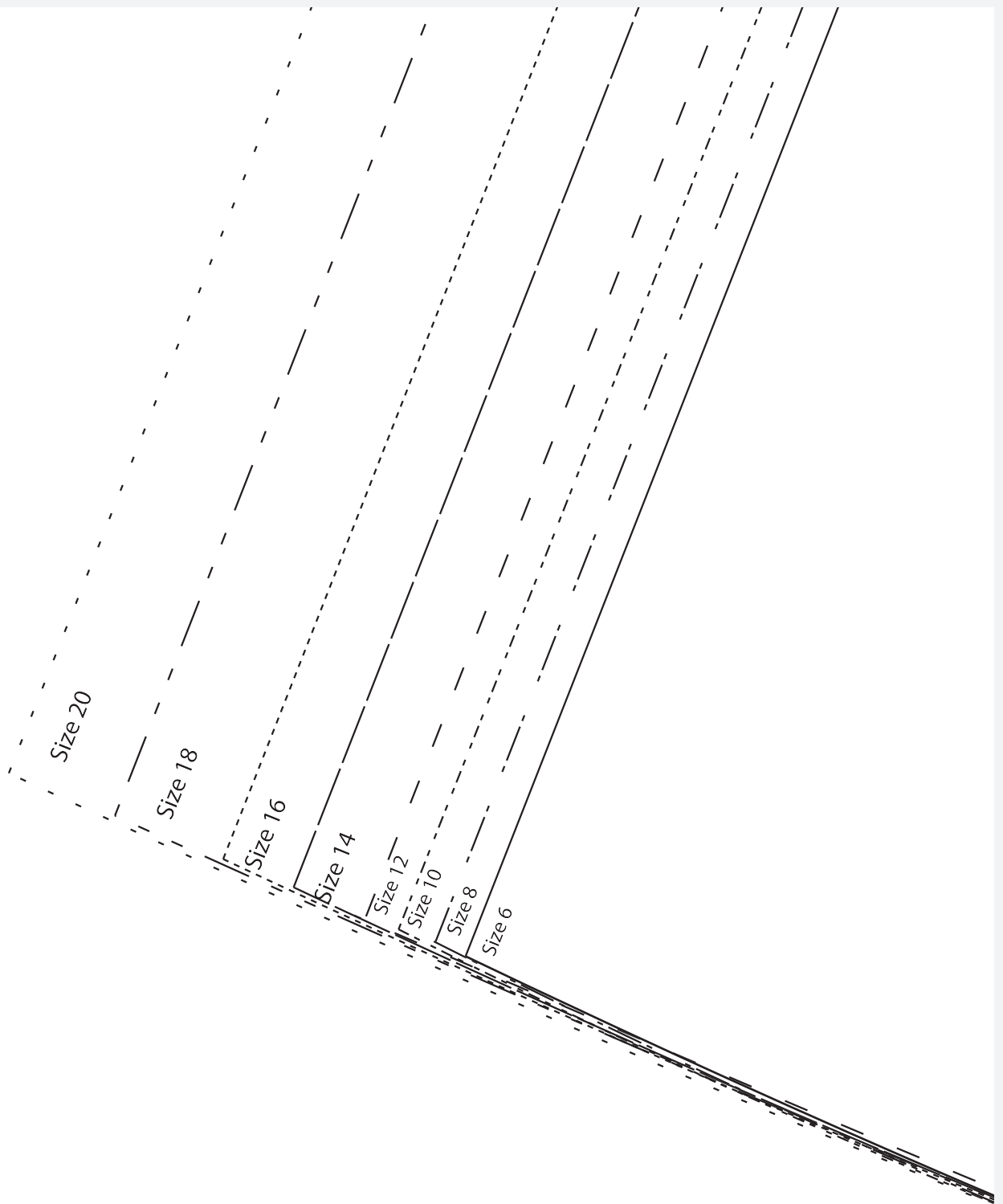
Front skirt –

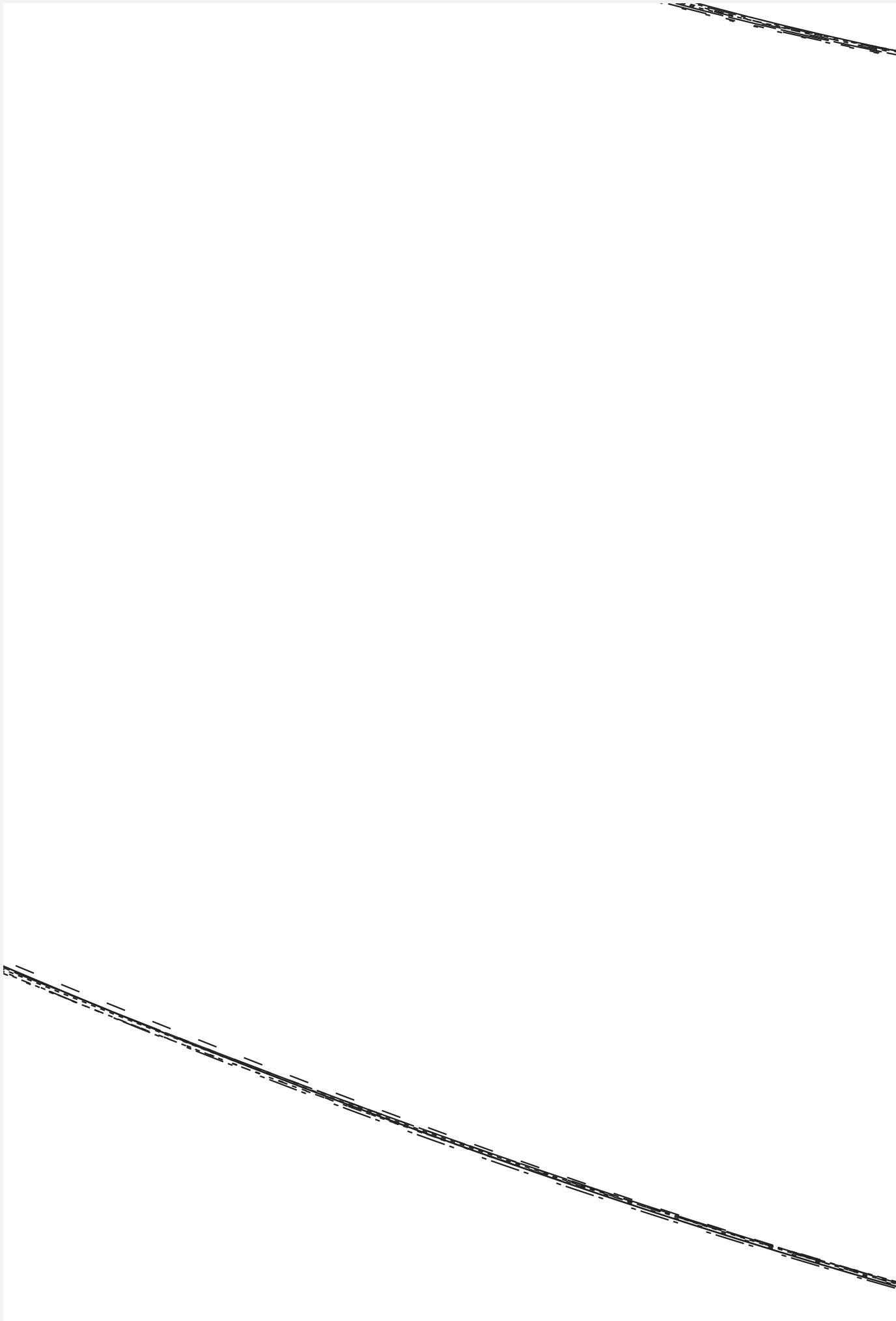
Cut 1 pc

ATTACH PART A HERE BEFORE CUTTING C

DRESS
PART B
air

OUT		IG OUT
-----	--	--------





CUT HERE FOR DRESS B

CUT HERE FOR DRESS C

ATTACH PART D HERE BEFORE CUTTING

CUT HERE FOR DRESS A



ATTACH PART B HERE BEFORE

Front skirt – PART D
Cut 1 pair

BEFORE CUTTING OUT



ATTACH PART C HERE BEFORE CUTTING OUT

D

THE MARIA DRESS

Pattern size chart

_____	Size 6
- - - - -	Size 8
-----	Size 10
- - - - -	Size 12
_____	Size 14
-----	Size 16
- - - - -	Size 18
- - - - -	Size 20



ATTACH PART D HERE BEFORE CUTTING OUT

ATTACI

TH PART A HERE BEFORE CUTTING OUT

D

THE MARIA DRESS

Front skirt – PART C

Cut 1 pair

Black box

Front right skirt piece:
Fix one of the long ties
to the left edge and
one of the short ties to
the right edge.

Front left skirt piece:
Fix one long and one
short tie to the right
edge.





