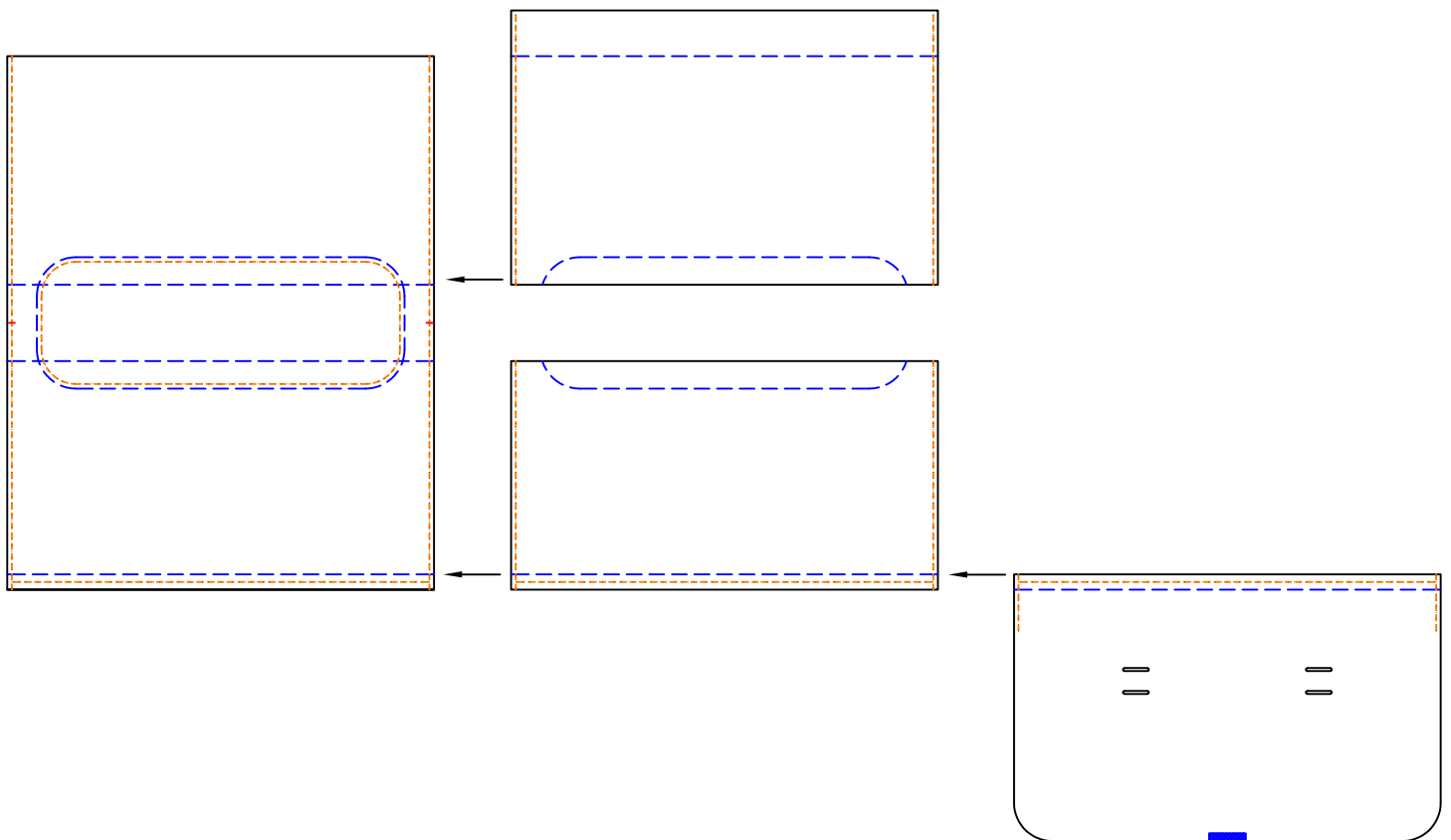


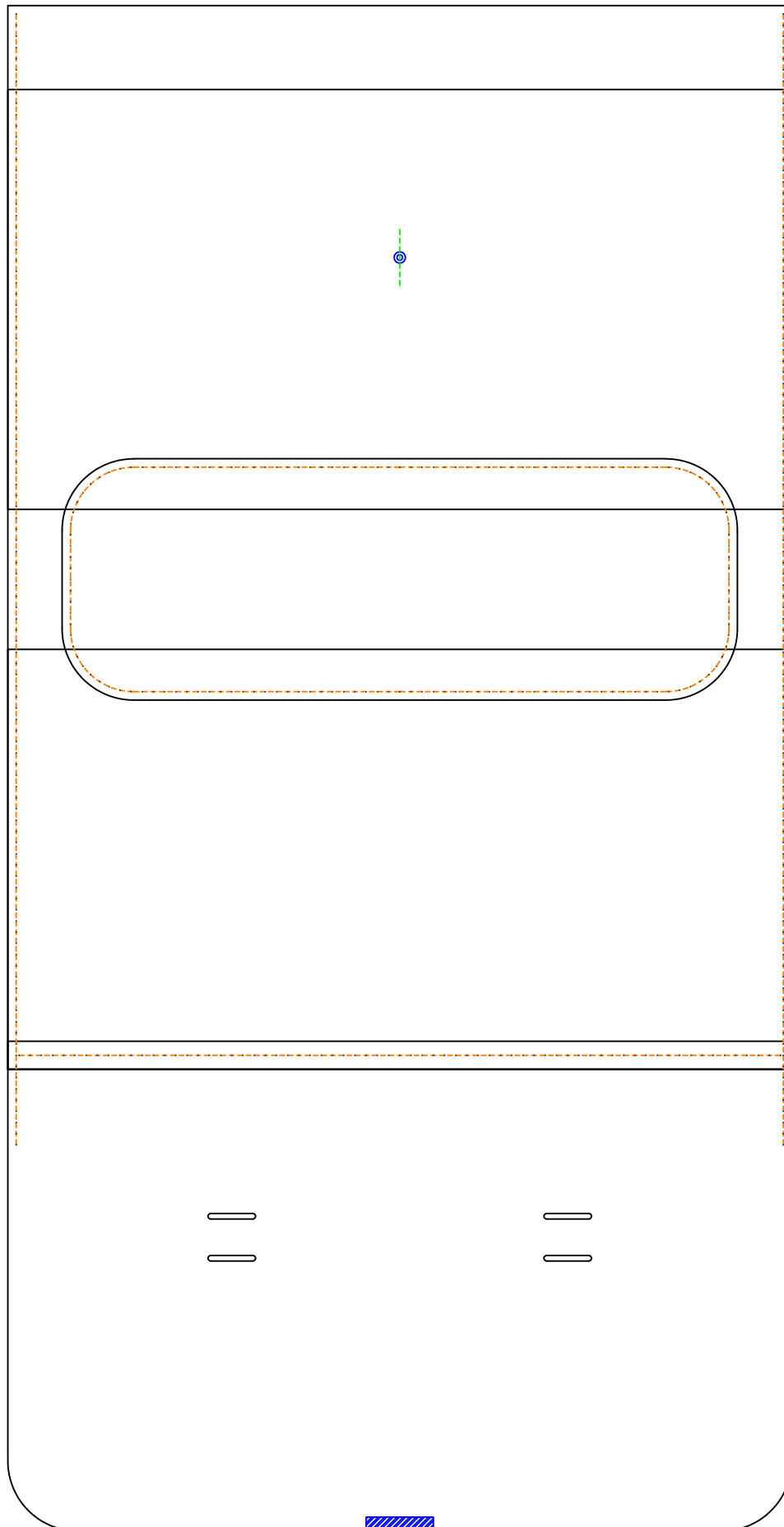
Instruction

Step 1: Sew A04 on A03's grain side, and then Glue A02, A03 on A01, just glue the edges.

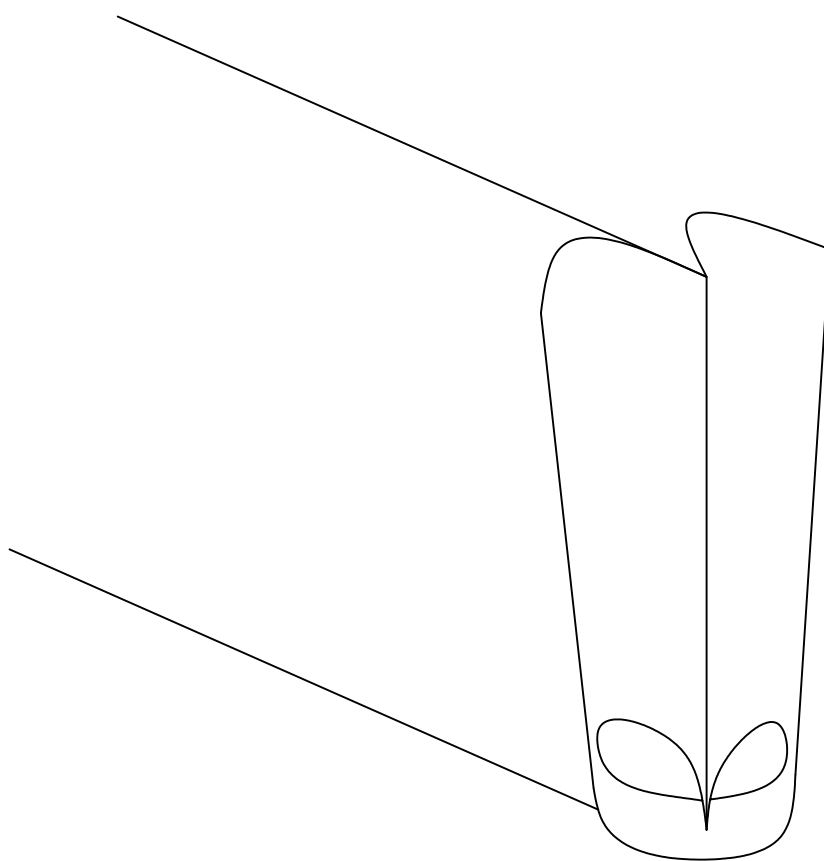
Here please notice that, A02 and A03 is glued on the flesh side of A01, so A04 will be placed between A01 and A03.



Step 2: Look at the combination carefully to understand the construction. Then sew A08 with A01, you can see, A08's stitching line get through A01, A02 and A03, then 2 pockets outside were formed.



Step 3: Glue A06 on A04, please look at the sketch carefully.
and glue A05 on the other side of A04.



Step 4: Now sew Step 3's combination with Step 2's combination to finish this bag.

Finally, please adjust the female lock as your need along the green line.

Notice:

1, You can burnish edges for aesthetic if you use vegetable tanned leather and use edge paint for aesthetic if you use chrome tanned leather;

2, Thin the edge before sewing is always advised;

3, 1oz=0.4mm;

4, Here is the line instruction.

