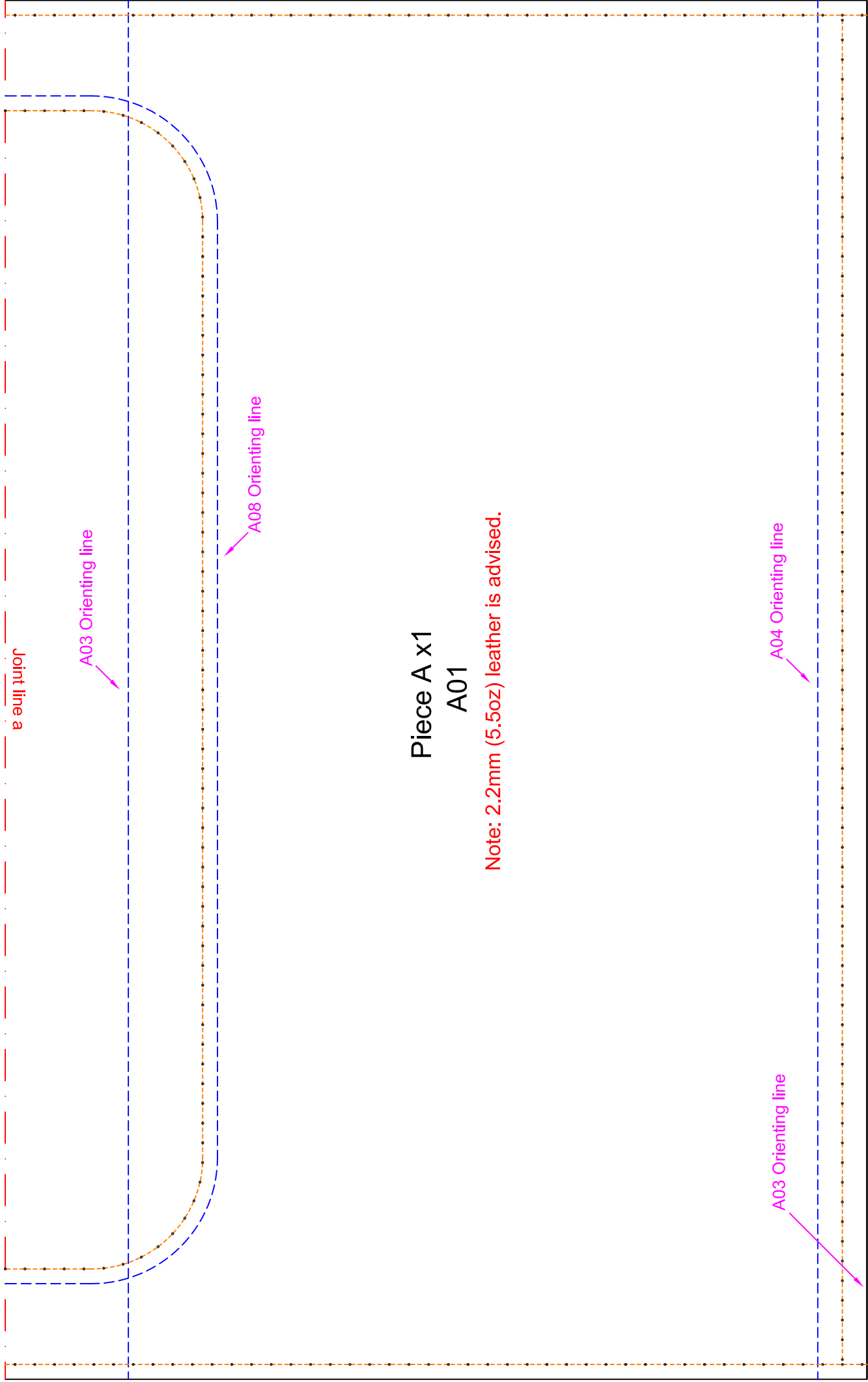


Adjust the female
lock along the green
line by your need

A02 Orienting line

Joint line a



Piece A x1
A01

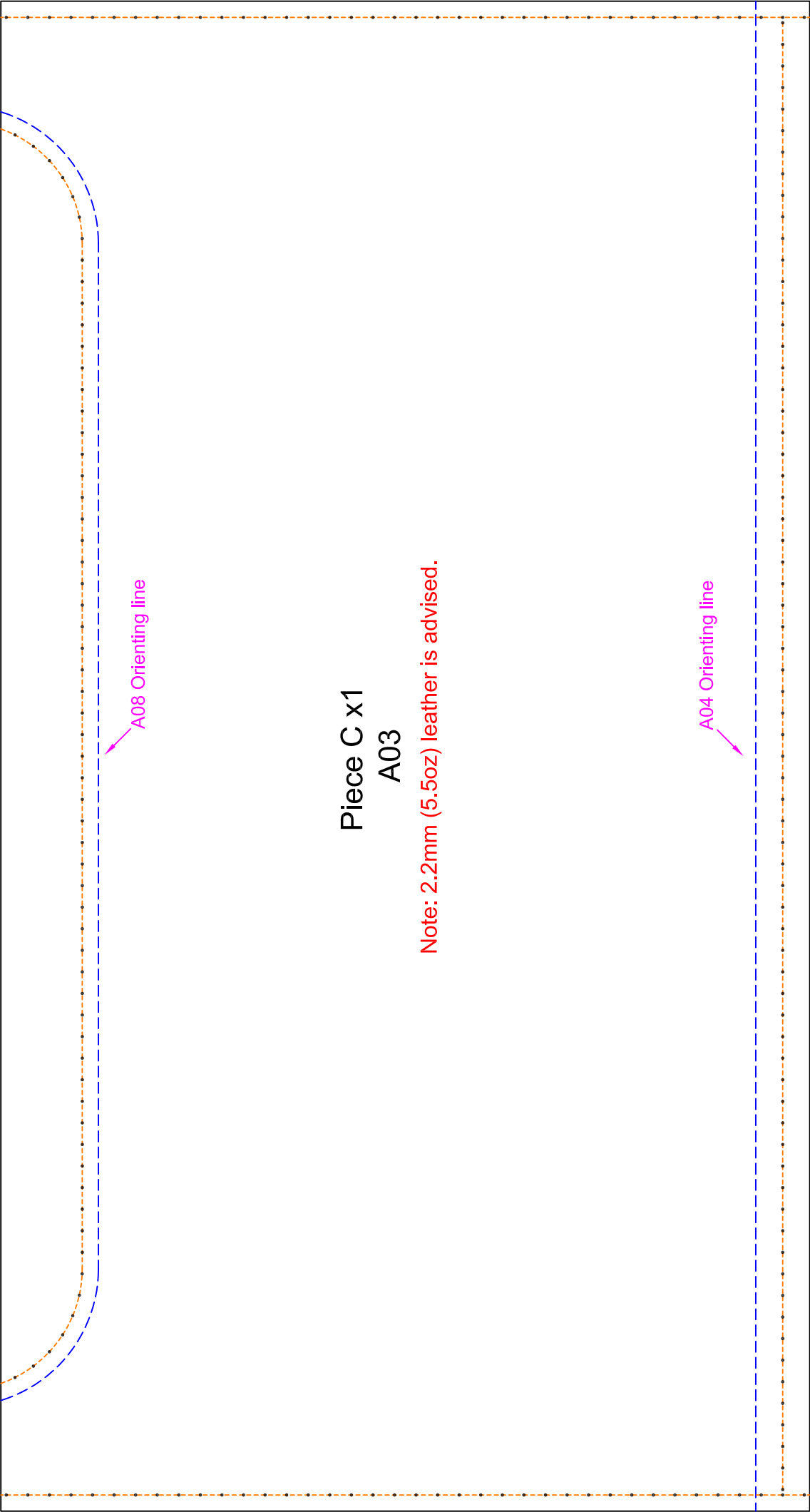
Note: 2.2mm (5.5oz) leather is advised.

Piece B x1
A02

Note: 2.2mm (5.5oz) leather is advised.

A01 Orienting line

A08 Orienting line

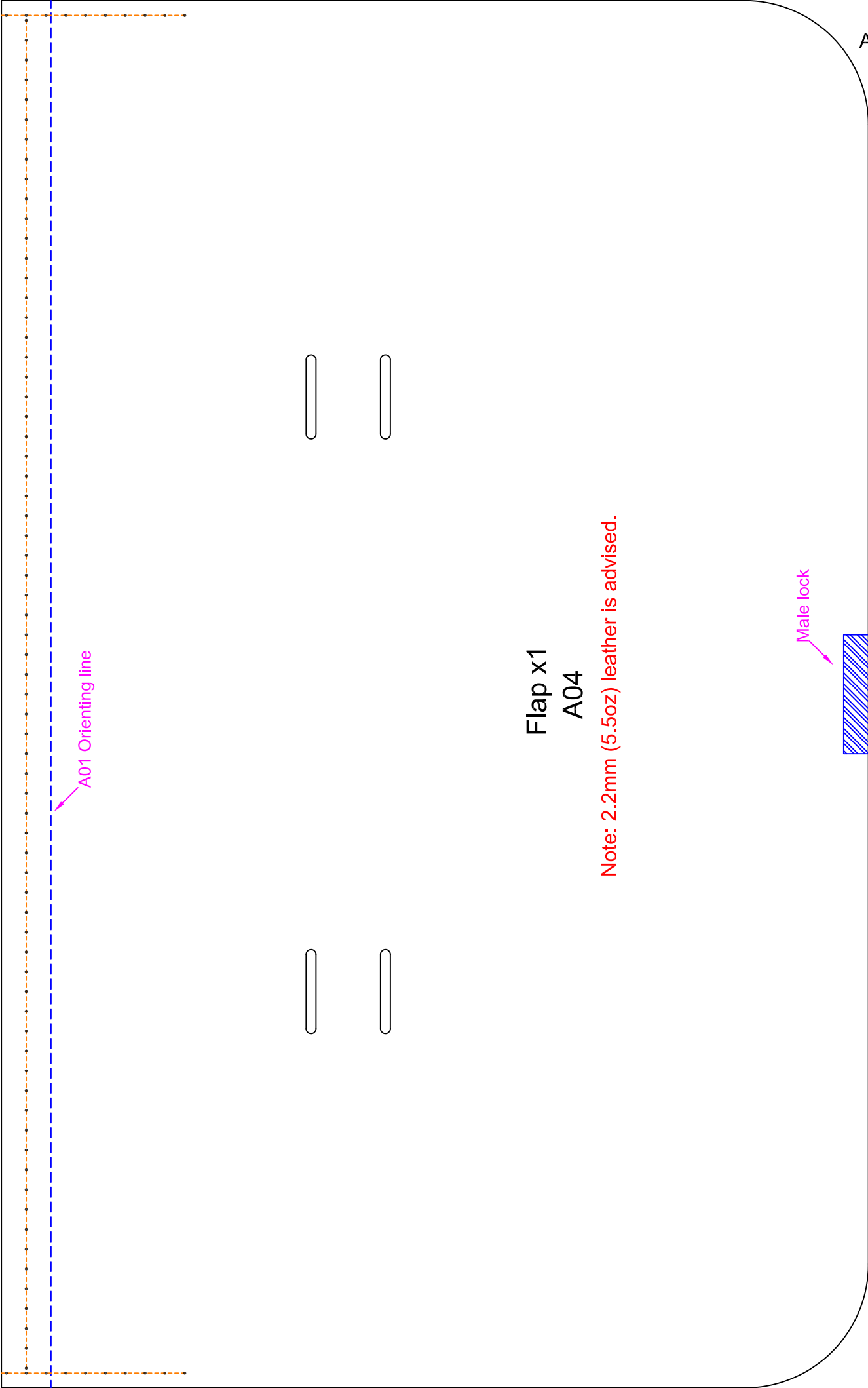


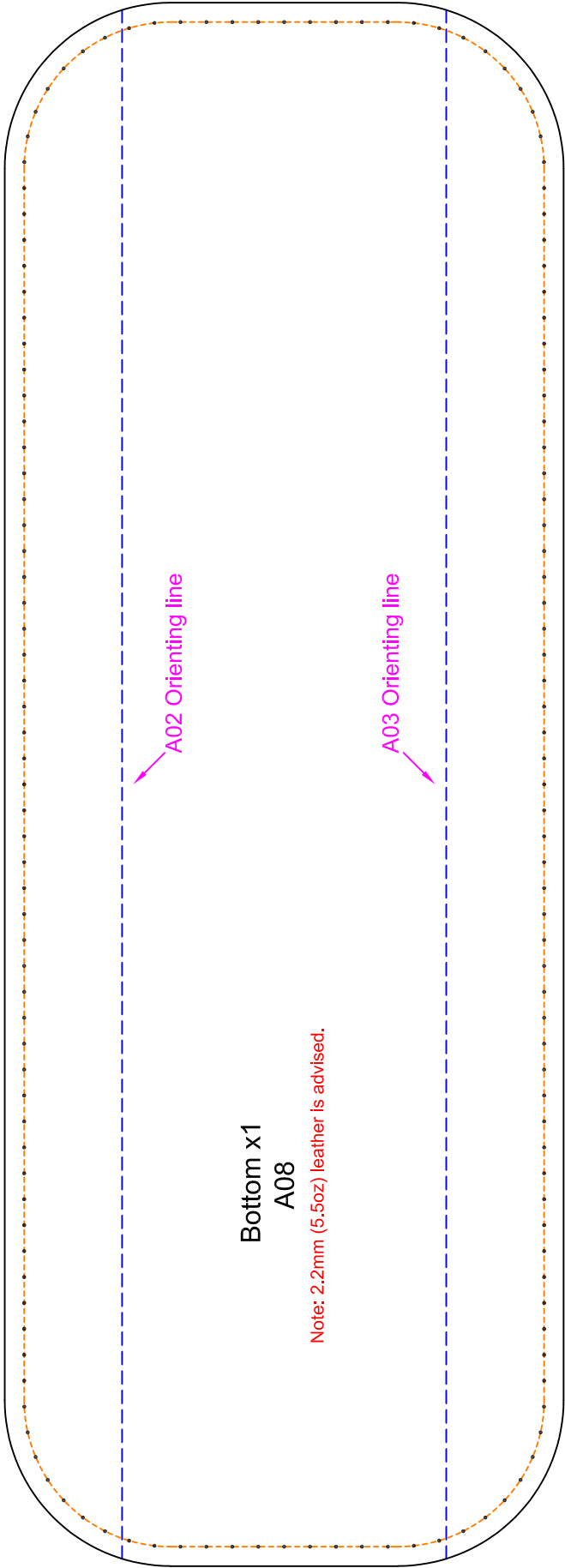
Piece C x1
A03

Note: 2.2mm (5.5oz) leather is advised.

A08 Orienting line

A04 Orienting line



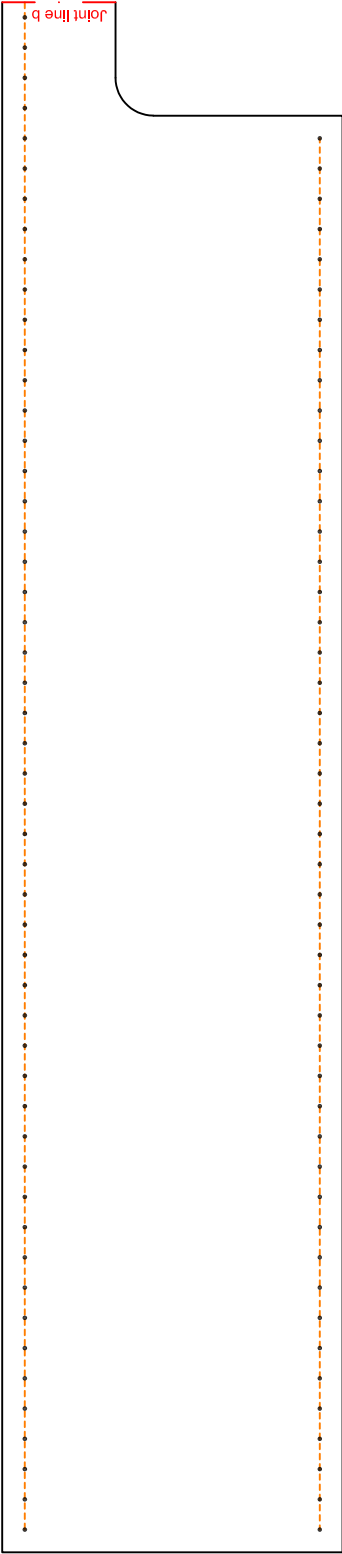
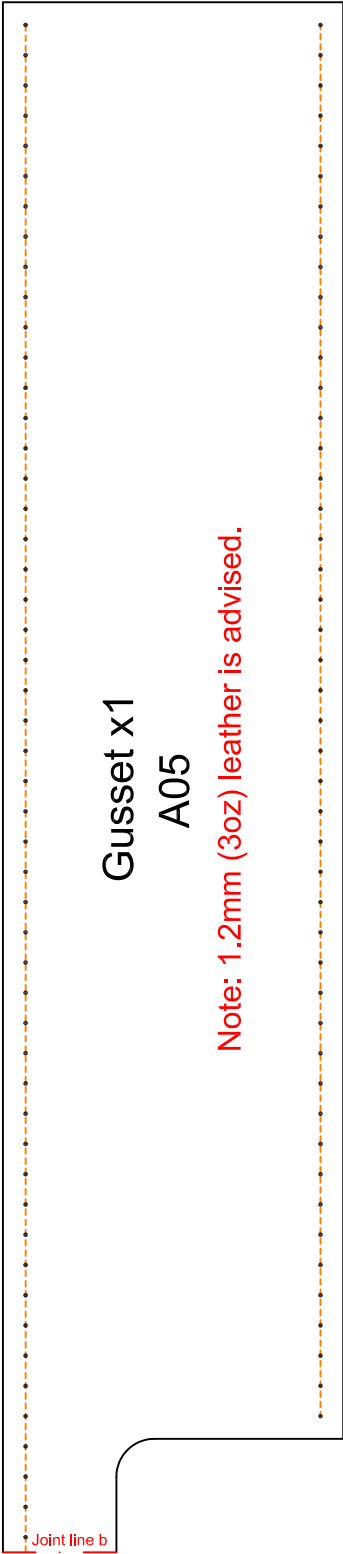


Interlayer x1
A04

Note: 4mm (10oz) leather is advised.

A05 Orienting line

A06 Orienting line



Gusset x1
A06

Note: 1.2mm (3oz) leather is advised.

Joint line c

Joint line c

Joint line c

Joint line c

