



#MoodMemoirDress



Print only this page first to check accuracy.
The Mood square above should measure 2 inches. Print "actual size" in "portrait" mode (not auto center). Formatted for both US Letter & A4 paper sizes.

Formatted for both
US Letter & A4 Paper

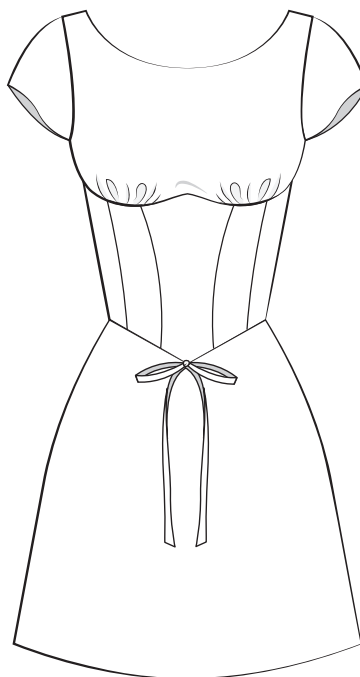
Trimless Option: This is the fastest! No trimming needed! Place left-side margins over right-side margins, overlapping dashed lines and dots. In the same fashion, top margins will overlap bottom margins. Slight unprinted gaps are normal for this method.

Trimmed Option: This removes any unprinted gaps. Trim along the top and right margins at the dashed lines. Overlap the trimmed margins to the untrimmed margins, matching dashed lines and dots.

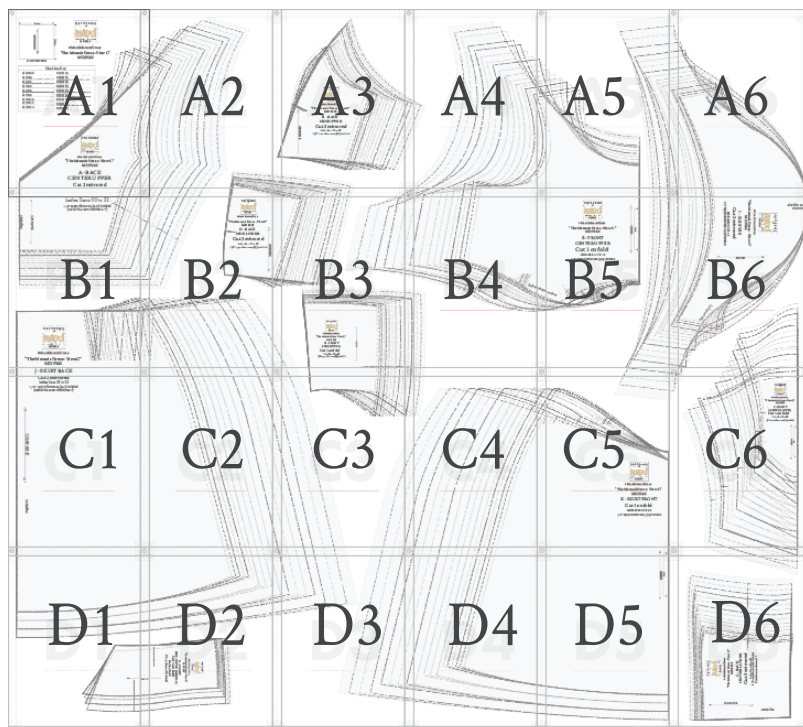
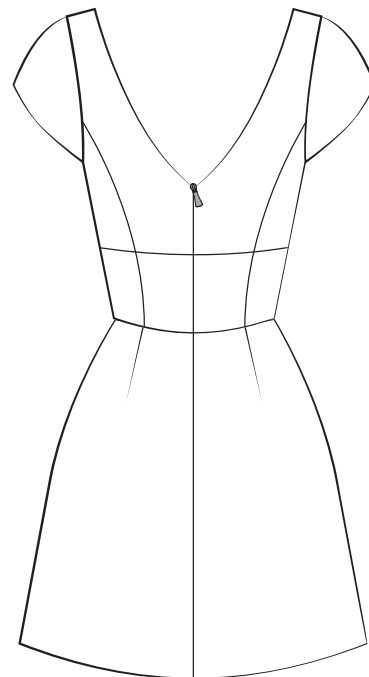
Tip! Build rows first, then join the rows together as you go.

"The Memoir Dress - View C"

Front



Back





“The Memoir Dress - View C”

Ladies Sizes 00 to 32

BODY MEASUREMENTS IN INCHES (Chart 1)

SINGLE SIZES*	00	0	2	4	6	8	10	12	14	16	18	20	22	24	26	28	30	32
BUST	31	32	33	34	35	36	37.5	39	40.5	42.5	44.5	46.5	48.5	50.5	52.75	55	57.25	59.5
WAIST	23	24	25	26	27	28	29.5	31	32.5	34.5	36.5	38.5	40.5	42.5	44.75	47	49.25	51.5
HIPS	34	35	36	37	38	39	40.5	42	43.5	45.5	47.5	49.5	51.5	53.5	56	58.5	61	63.5

APPROXIMATE FINISHED GARMENT MEASUREMENTS - IN INCHES (Chart 2)*

SINGLE SIZES	00	0	2	4	6	8	10	12	14	16	18	20	22	24	26	28	30	32
BUST	32.5	33.5	34.5	35.5	36.5	37.5	39	40.5	42	44	46	48	50	52	54.25	56.5	58.75	61
WAIST	24	25	26	27	28	29	30.5	32	33.5	35.5	37.5	39.5	41.5	43.5	45.75	48	50.25	52.5
HIPS	35	36	37	38	39	40	41.5	43	44.5	46.5	48.5	50.5	52.5	54.5	57	59.5	62	64.5

Size guide is based on the suggested design & wearing ease for this style. You can also choose the size according to your desired finished garment measurements, blending between sizes as needed. For best results, sew a test garment in a similar fabric to adjust your pattern.

Recommended Fabric: Gavia Premium Polyester Satin (Main fabric), Mimosa Red Polyester Double Georgette (Lining)

We love creating these free patterns for the community and we want to keep them free! In return, we hope you check out MoodFabrics.com for your next project!

Want to use one of our patterns to make a garment to sell? Our patterns are royalty-free! We just ask that you credit us with:

MoodSewciety.com

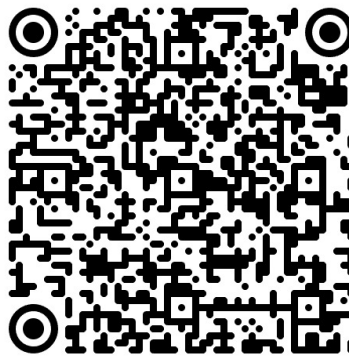
or

MoodFabrics.com

in your product description.

FOR SEWING INSTRUCTIONS AND MORE INFORMATION:

Scan the QR code or visit
MoodSewciety.com and search
“MDF365”



1/2" seam allowances (SA's) included
unless stated otherwise.

REMEMBER TO SHARE YOUR MADE WITH MOOD LOOK!

Tag us and use:

#MoodMemoirDress

for a shot at being featured on our social media



@mood.fabrics



@moodfabrics



@Mood_Fabrics



@moodfabrics

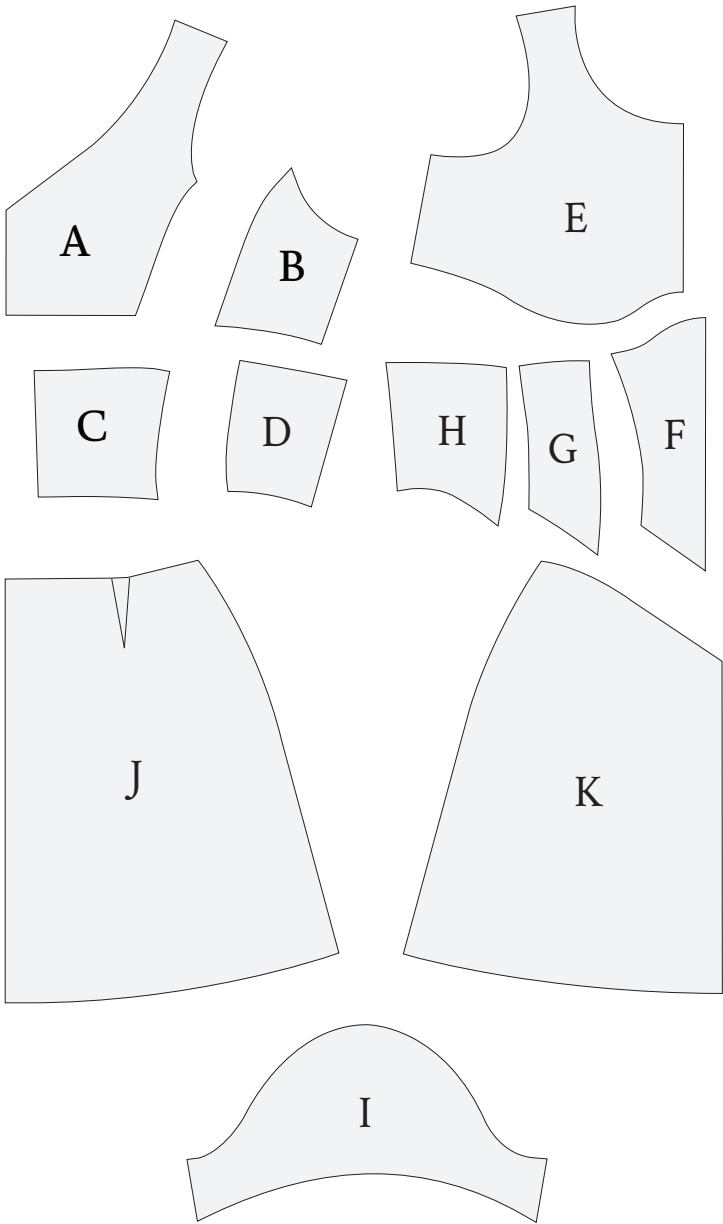


@moodfabrics

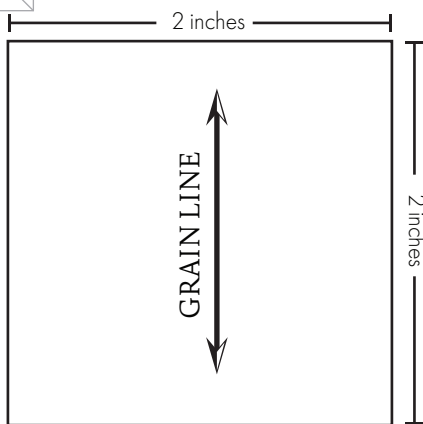


“The Memoir Dress - View C”
Ladies Sizes 00 to 32

A	BACK CENTER UPPER FABRIC - CUT 2 MIRRORED LINING - CUT 2 MIRRORED
B	BACK SIDE UPPER FABRIC - CUT 2 MIRRORED LINING - CUT 2 MIRRORED
C	BACK CENTER LOWER FABRIC - CUT 2 MIRRORED LINING - CUT 2 MIRRORED
D	BACK SIDE LOWER FABRIC - CUT 2 MIRRORED LINING - CUT 2 MIRRORED
E	FRONT CENTER UPPER FABRIC - CUT 1 ON FOLD LINING - CUT 1 ON FOLD
F	FRONT CENTER LOWER FABRIC - CUT 1 ON FOLD LINING - CUT 1 ON FOLD
G	FRONT SIDE LOWER (MIDDLE) FABRIC - CUT 2 MIRRORED LINING - CUT 2 MIRRORED
H	FRONT SIDE LOWER FABRIC - CUT 2 MIRRORED LINING - CUT 2 MIRRORED
I	SLEEVE FABRIC - CUT 2 MIRRORED
J	SKIRT BACK FABRIC - CUT 2 MIRRORED
K	SKIRT FRONT FABRIC - CUT 2 MIRRORED



Size Line Key	
SIZE 00	SIZE 16
SIZE 0	SIZE 18
SIZE 2	SIZE 20
SIZE 4	SIZE 22
SIZE 6	SIZE 24
SIZE 8	SIZE 26
SIZE 10	SIZE 28
SIZE 12	SIZE 30
SIZE 14	SIZE 32



2" BOX TEST PIECE



#MoodMemoirDress
"The Memoir Dress - View C"
MDF365

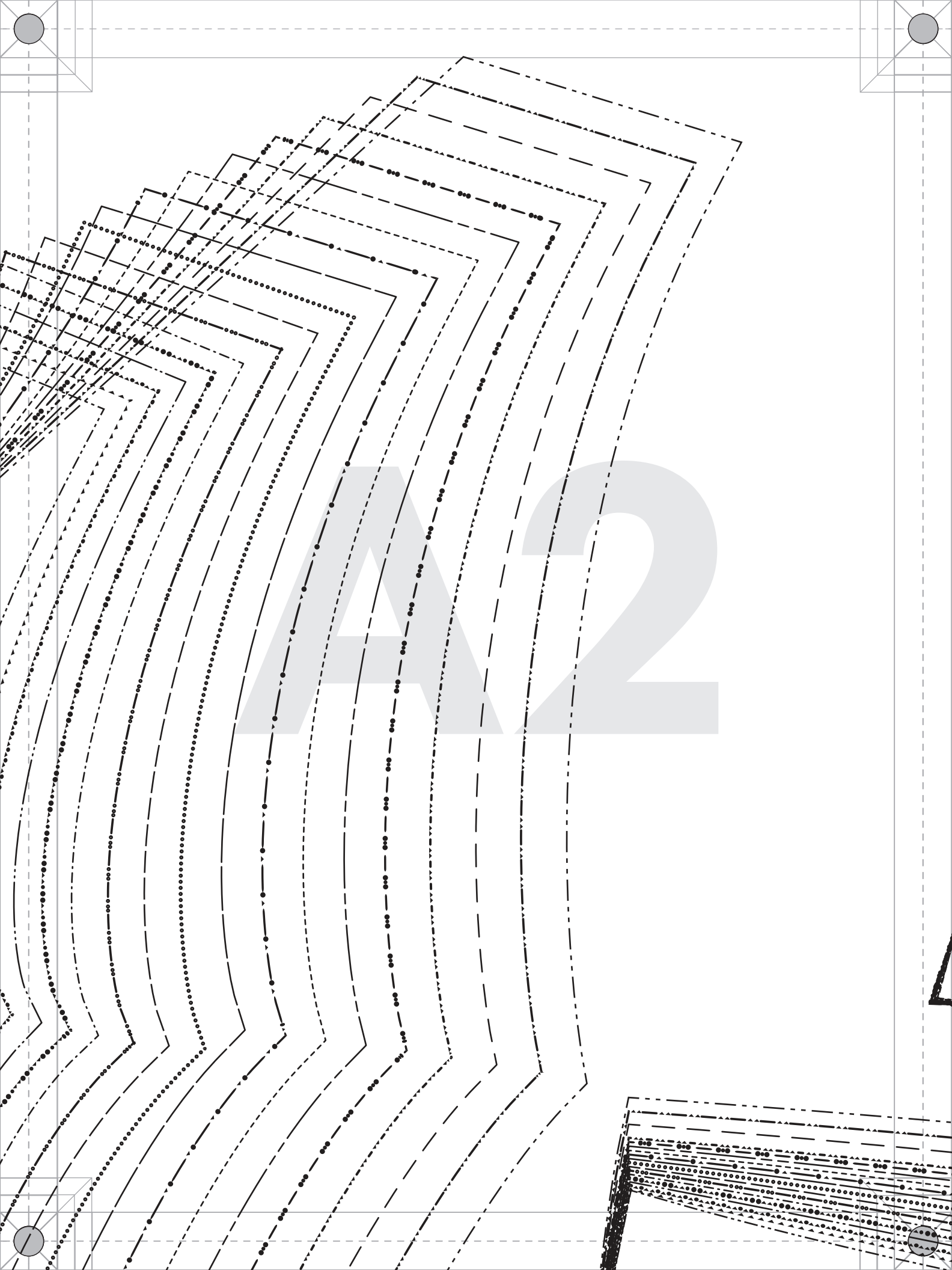
Size Line Key

SIZE 00	SIZE 16
SIZE 0	SIZE 18
SIZE 2	SIZE 20
SIZE 4	SIZE 22
SIZE 6	SIZE 24
SIZE 8	SIZE 26
SIZE 10	SIZE 28
SIZE 12	SIZE 30
SIZE 14	SIZE 32



#MoodMemoirDress
"The Memoir Dress - View C"
MDF365

A - BACK
CENTER UPPER
Cut 2 mirrored





#MoodMemoirDress

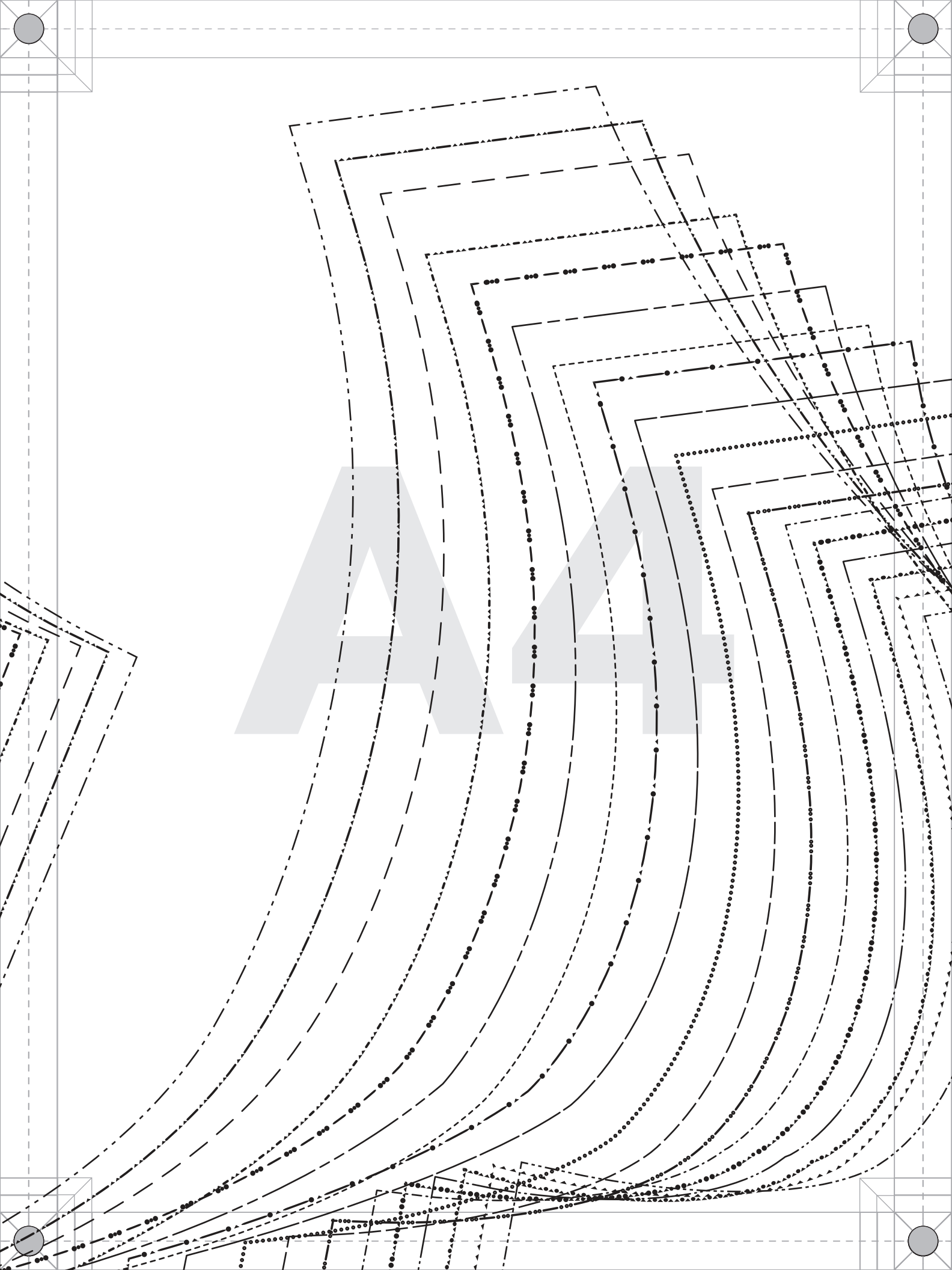
"The Memoir Dress - View C"
MDF365

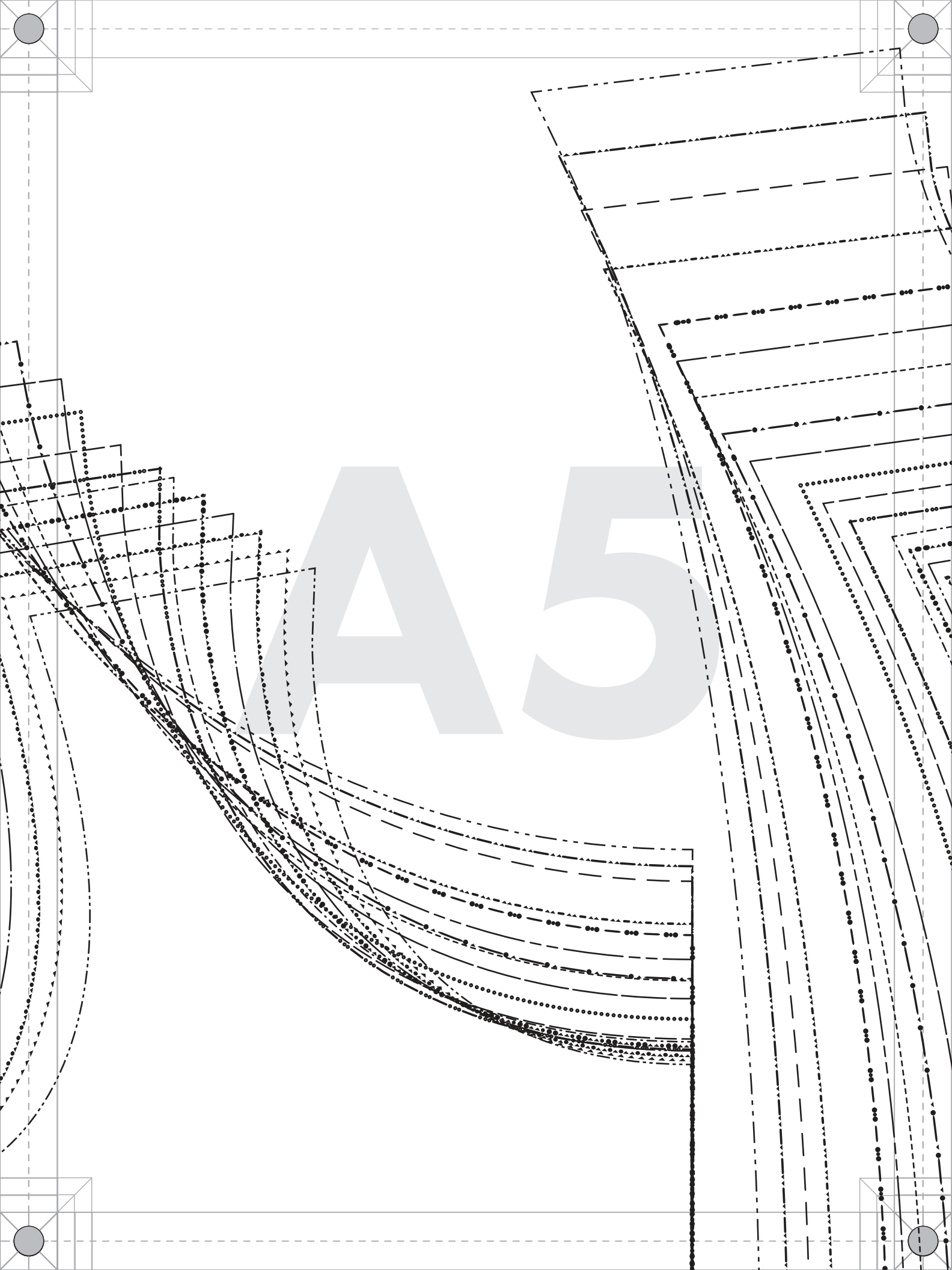
B - BACK
SIDE UPPER
Cut 2 mirrored

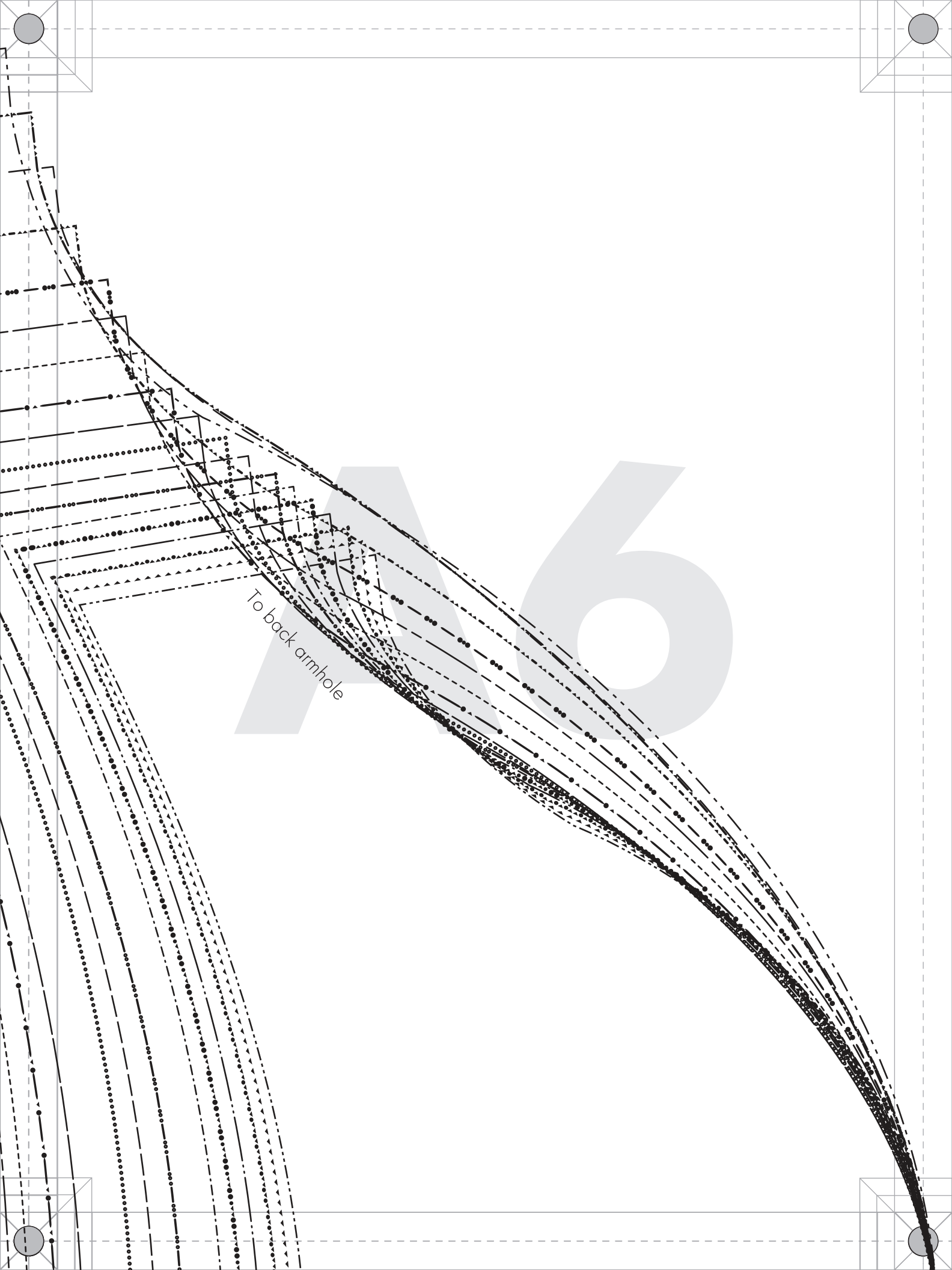
Ladies Sizes 00 to 32

1/2" seam allowances (SA's) included

GRAINLINE







To back armhole

Ladies Sizes 00 to 32

1/2" seam allowances (SA's) included
(Center line seam allowance 1")

Center line

GRAINLINE

PATTERNS
BY
mood
DESIGNER FABRICS
MDF365

#MoodMemoirDress

"The Memoir Dress - View C"
MDF365

J - SKIRT BACK



#MoodMemoirDress

"The Memoir Dress - View C"
MDF365

D - BACK
SIDE LOWER
Cut 2 mirrored

Ladies Sizes 00 to 32
1/2" seam allowances (SA's) included

GRANLINE

B2



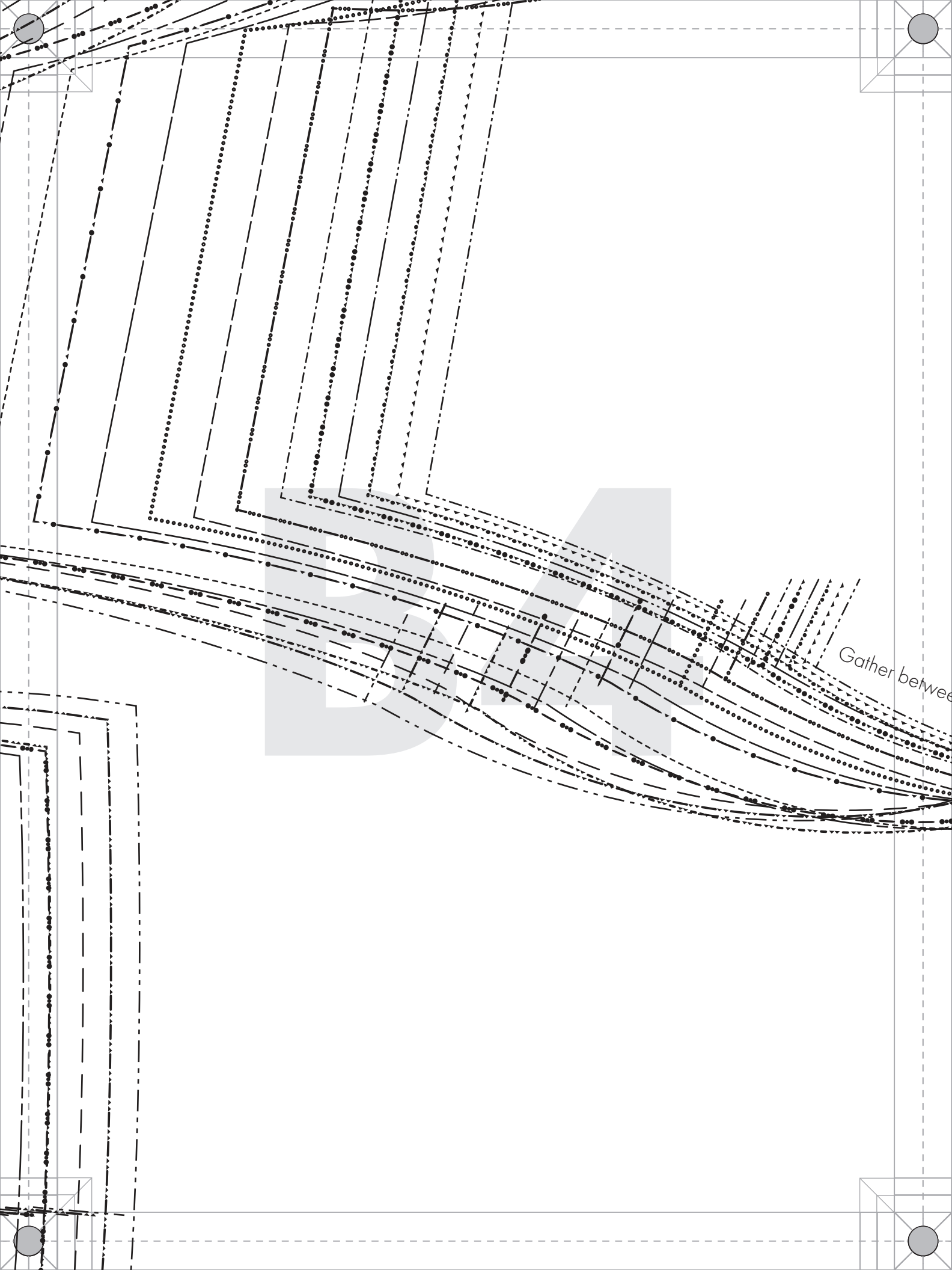
#MoodMemoirDress

"The Memoir Dress - View C"
MDF365

H - FRONT
SIDE LOWER
Cut 1 on fold

Ladies Sizes 00 to 32
1/2" seam allowances (SA's) included

GRAINLINE



Gather between



#MoodMemoirDress

**“The Memoir Dress - View C”
MDF365**

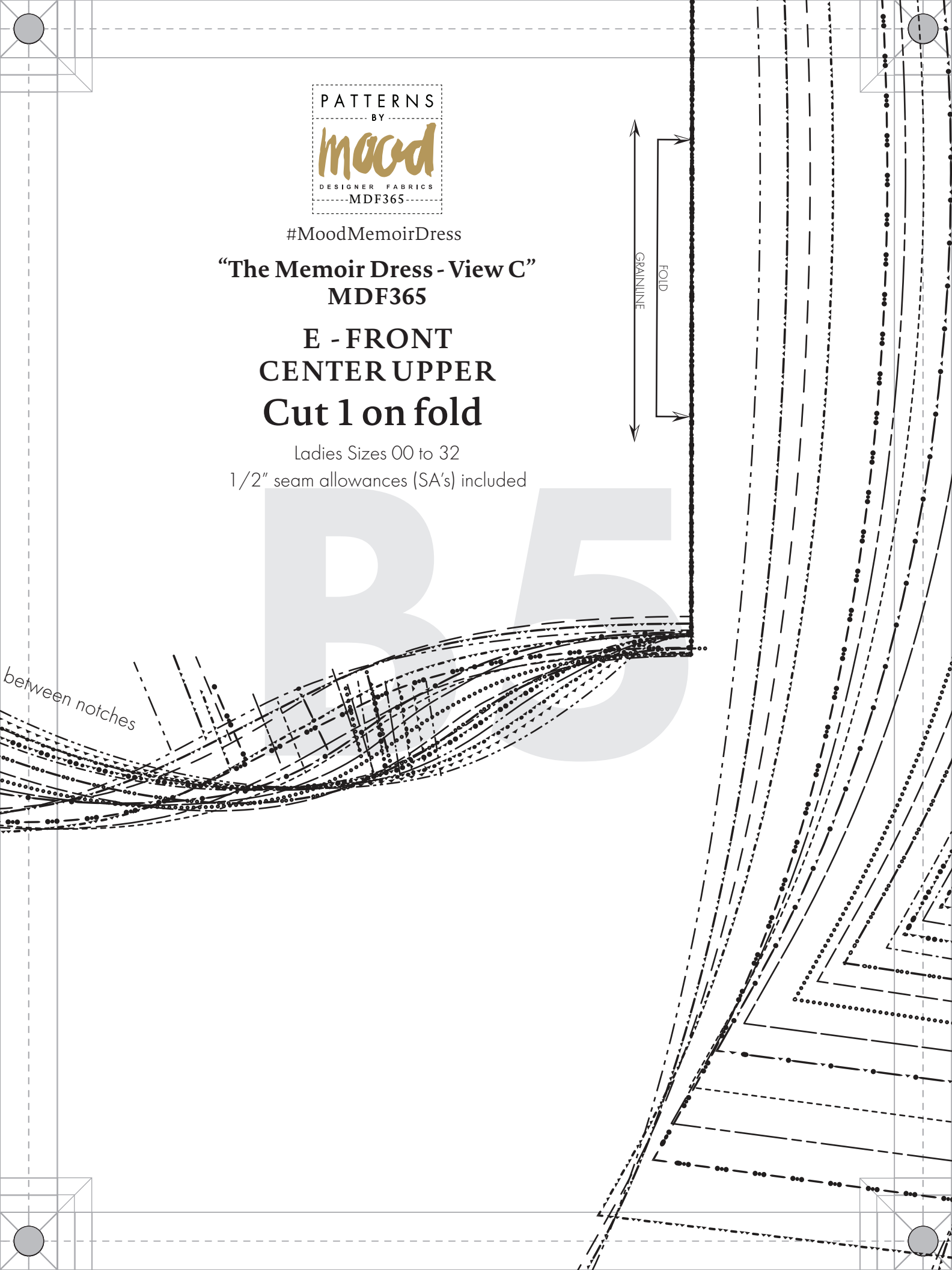
**E - FRONT
CENTER UPPER
Cut 1 on fold**

Ladies Sizes 00 to 32

1/2" seam allowances (SA's) included



between notches



Shoulder center



#MoodMemoirDress

"The Memoir Dress - View C"

MDF365

I - SLEEVES

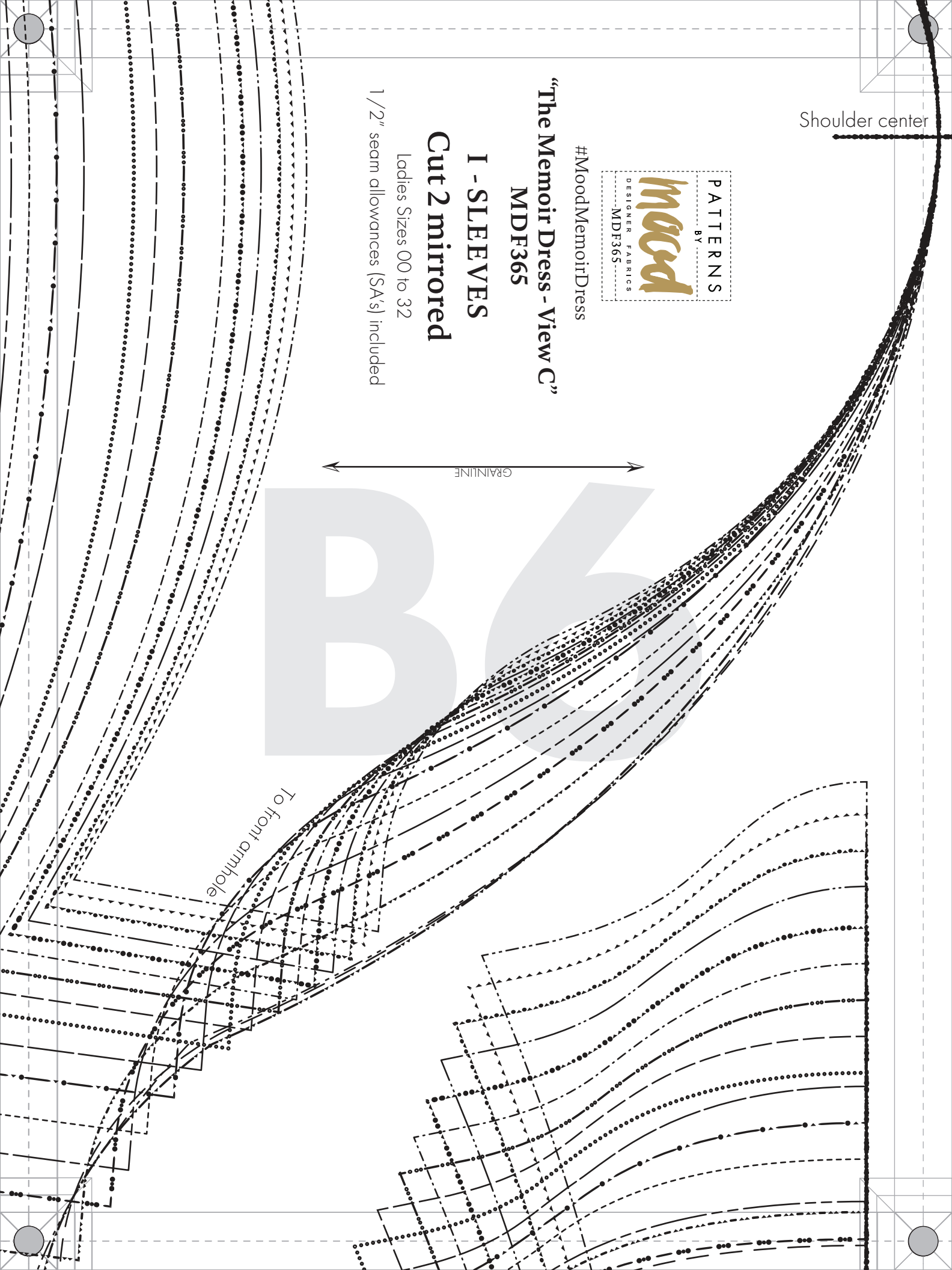
Cut 2 mirrored

Ladies Sizes 00 to 32

1/2" seam allowances (SA's) included



To front armhole



J - SKIRT BACK

Cut 2 mirrored

Ladies Sizes 00 to 32

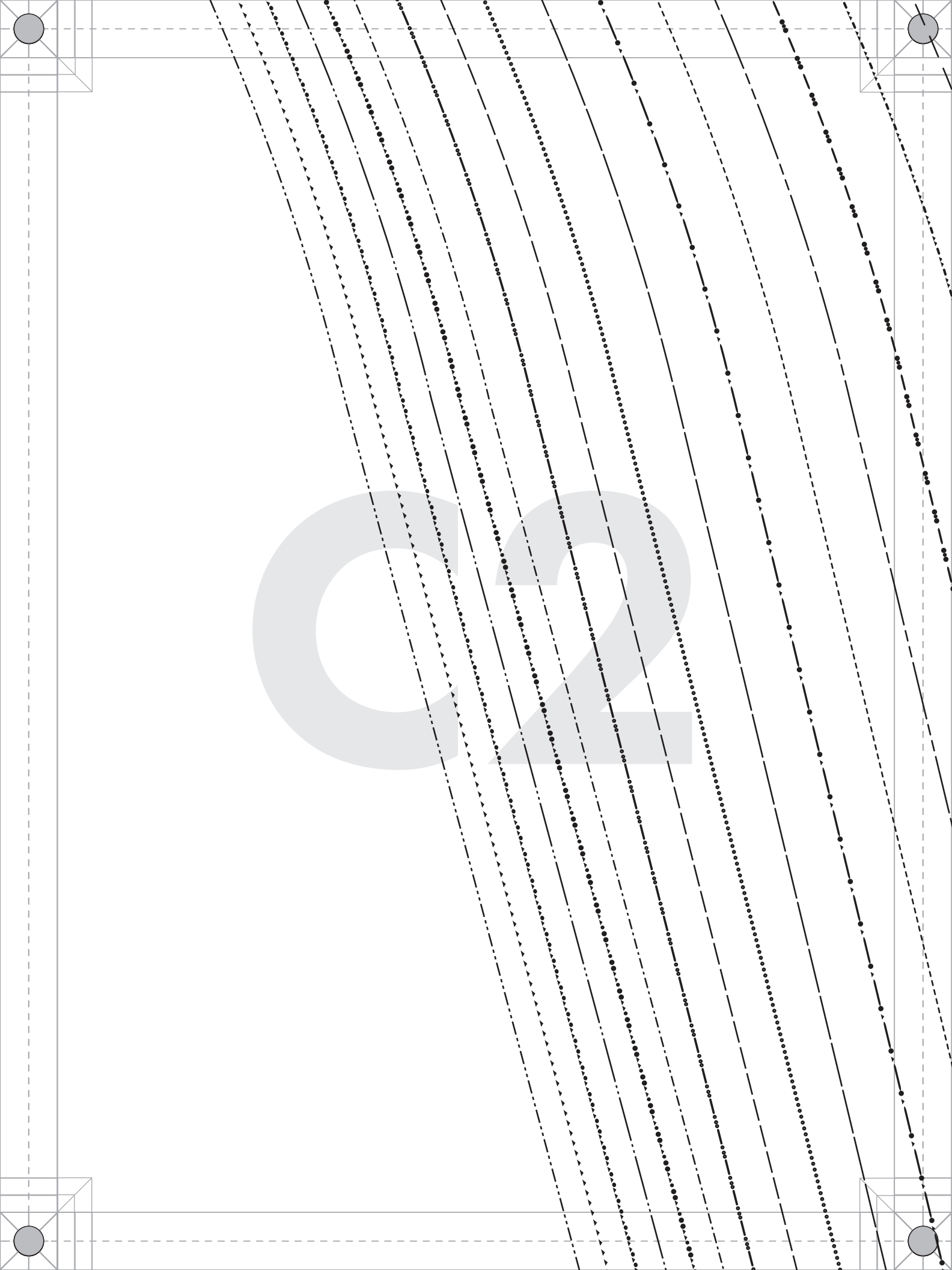
1/2" seam allowances (SA's) included

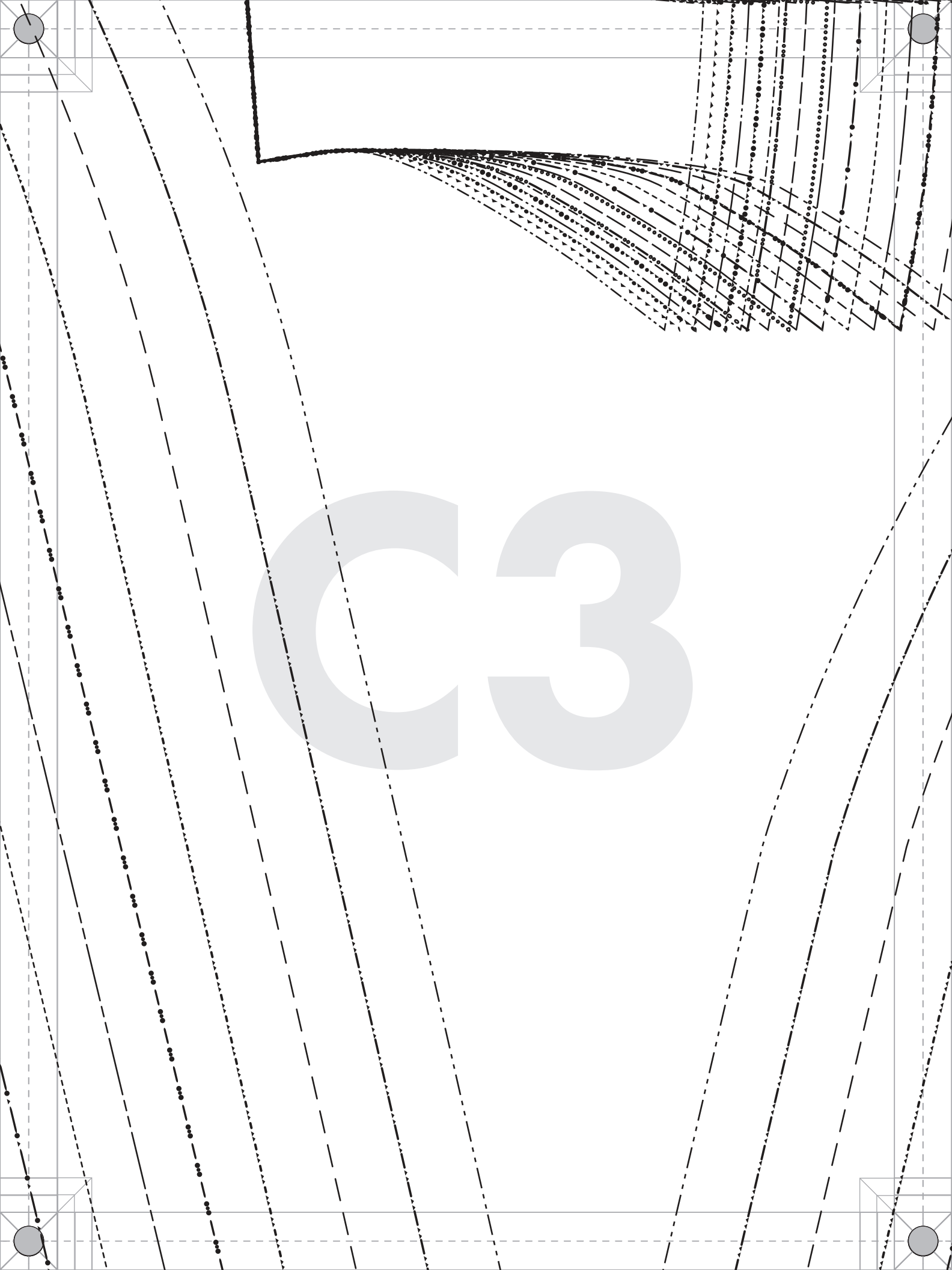
(Center line seam allowance 1")

GRAINLINE

Center line

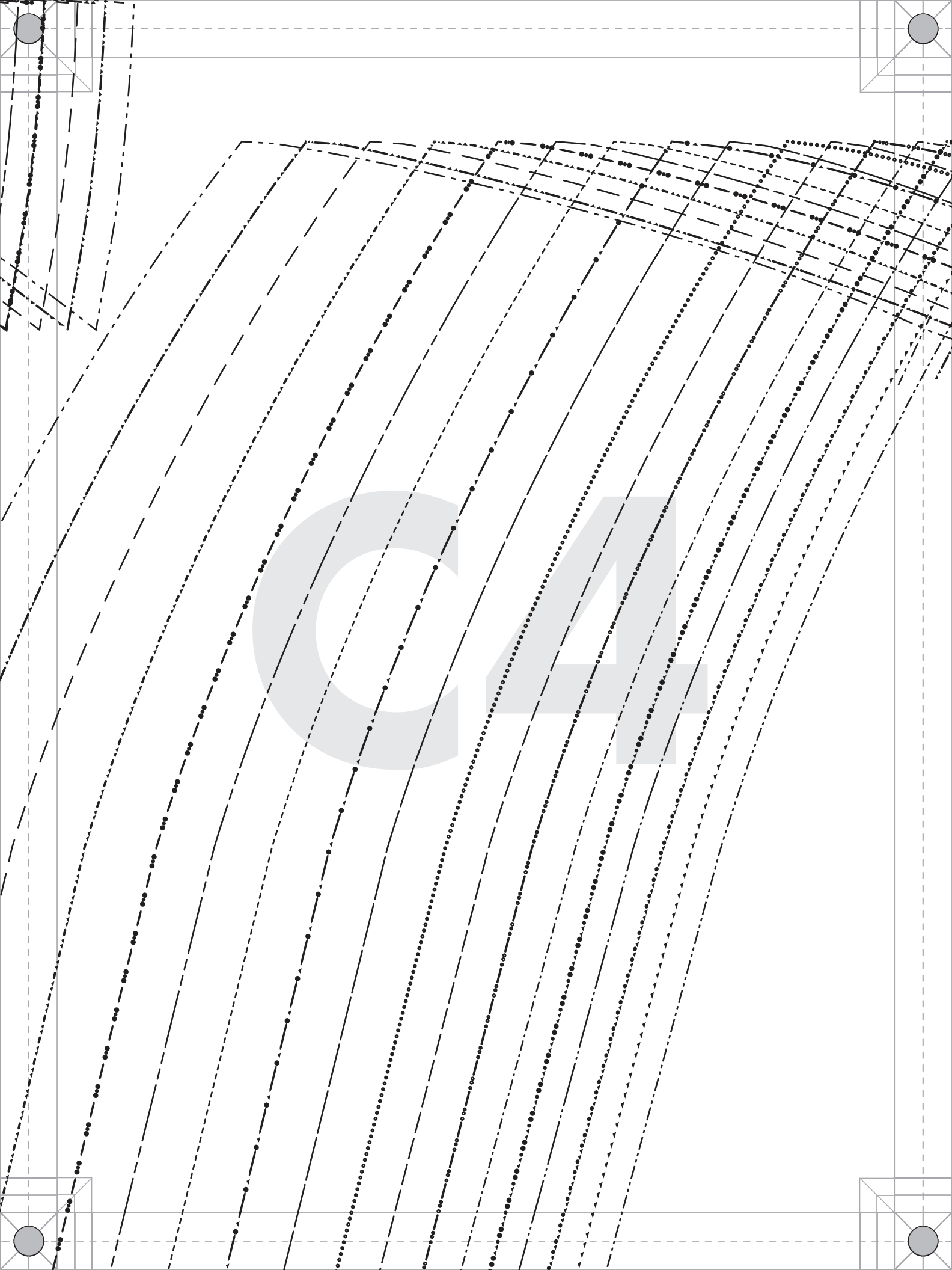
C1

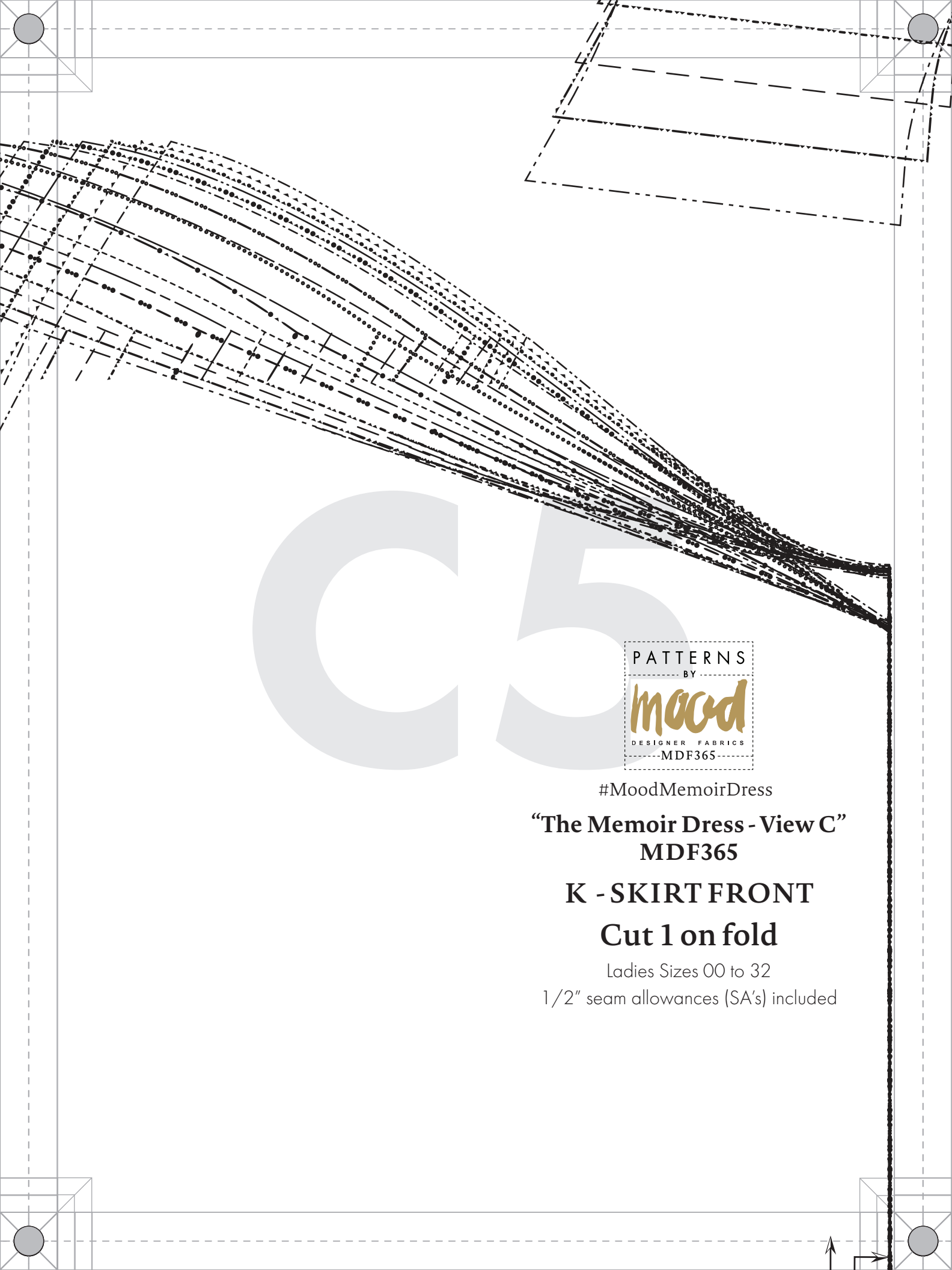




The background of the page is a complex geometric pattern. It features a light gray grid with dashed lines. Overlaid on this are several sets of parallel lines, some solid and some dashed, creating a sense of depth and perspective. In the top right corner, there is a cluster of lines that appear to be radiating from a point, creating a fan-like effect. The large, light gray watermark 'C3' is centered on the page, with the 'C' being a simple curve and the '3' having a more complex, stylized shape.

C3





#MoodMemoirDress

**“The Memoir Dress - View C”
MDF365**

K - SKIRT FRONT

Cut 1 on fold

Ladies Sizes 00 to 32

1/2" seam allowances (SA's) included



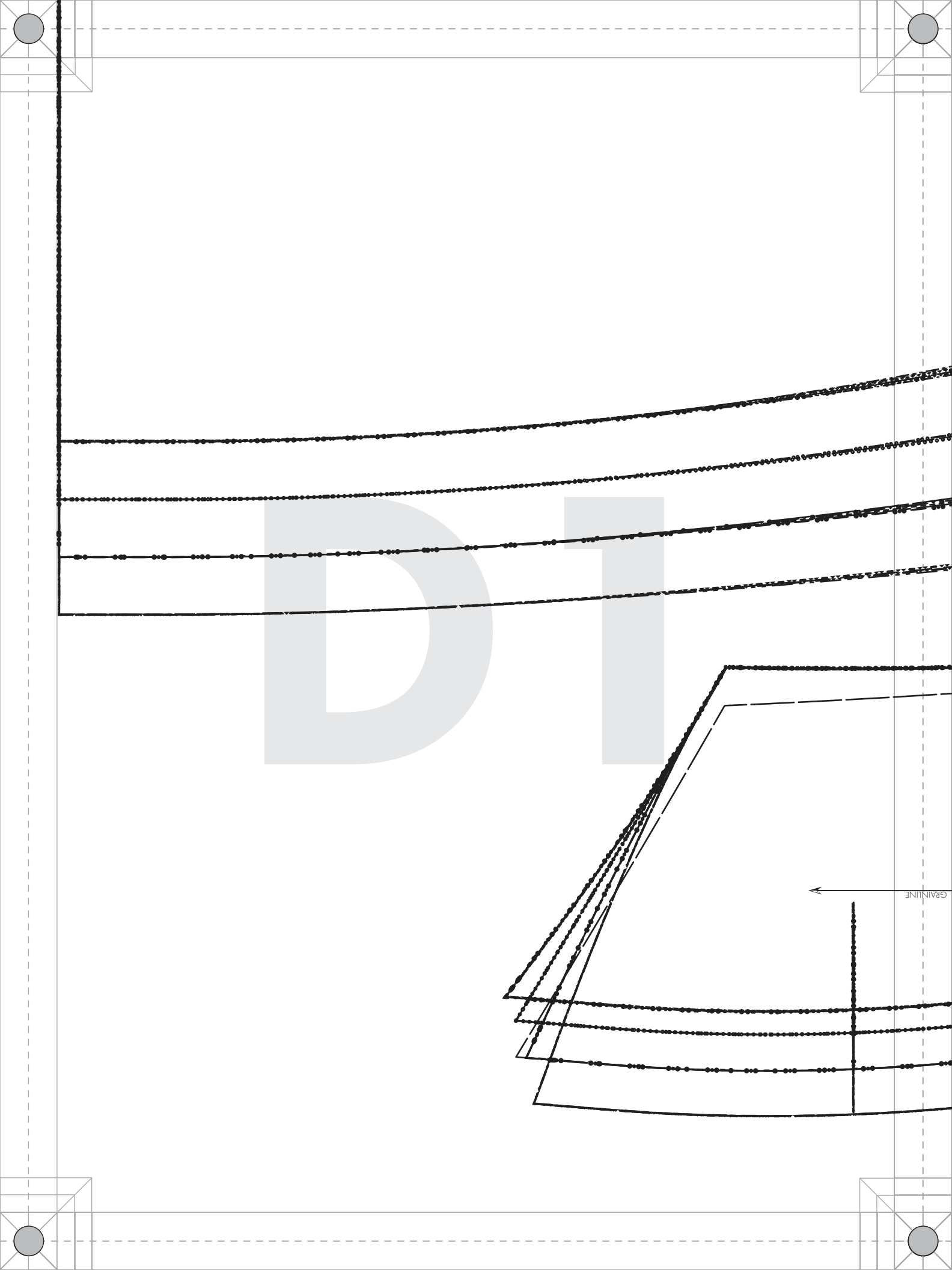
#MoodMemoirDress

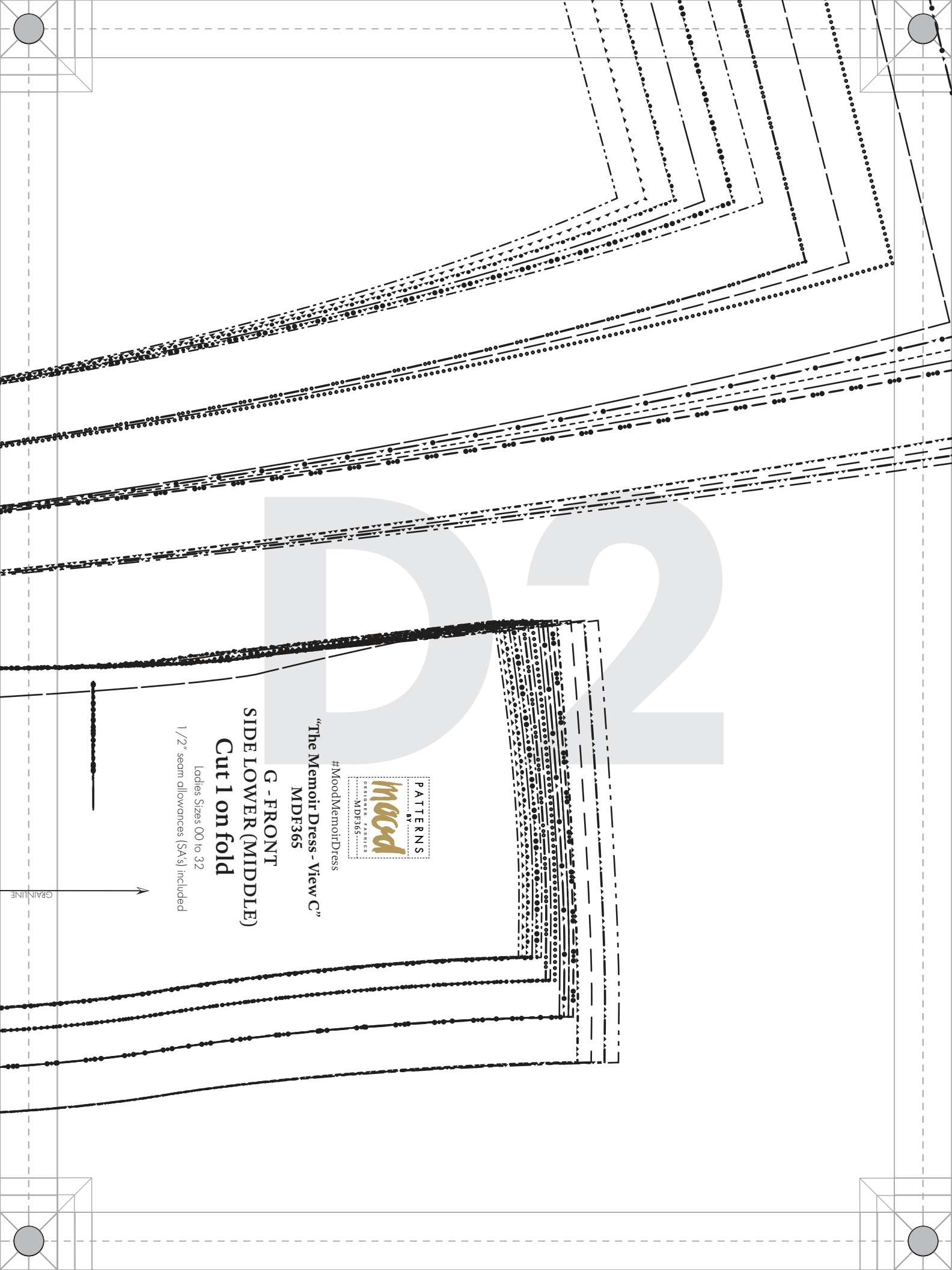
"The Memoir Dress - View C"
MDF365

F - FRONT
CENTER LOWER
Cut 1 on fold

Ladies Sizes 00 to 32
1/2" seam allowances (SA's) included







#MoodMemoirDress

"The Memoir Dress - View C"
MDF365

G - FRONT

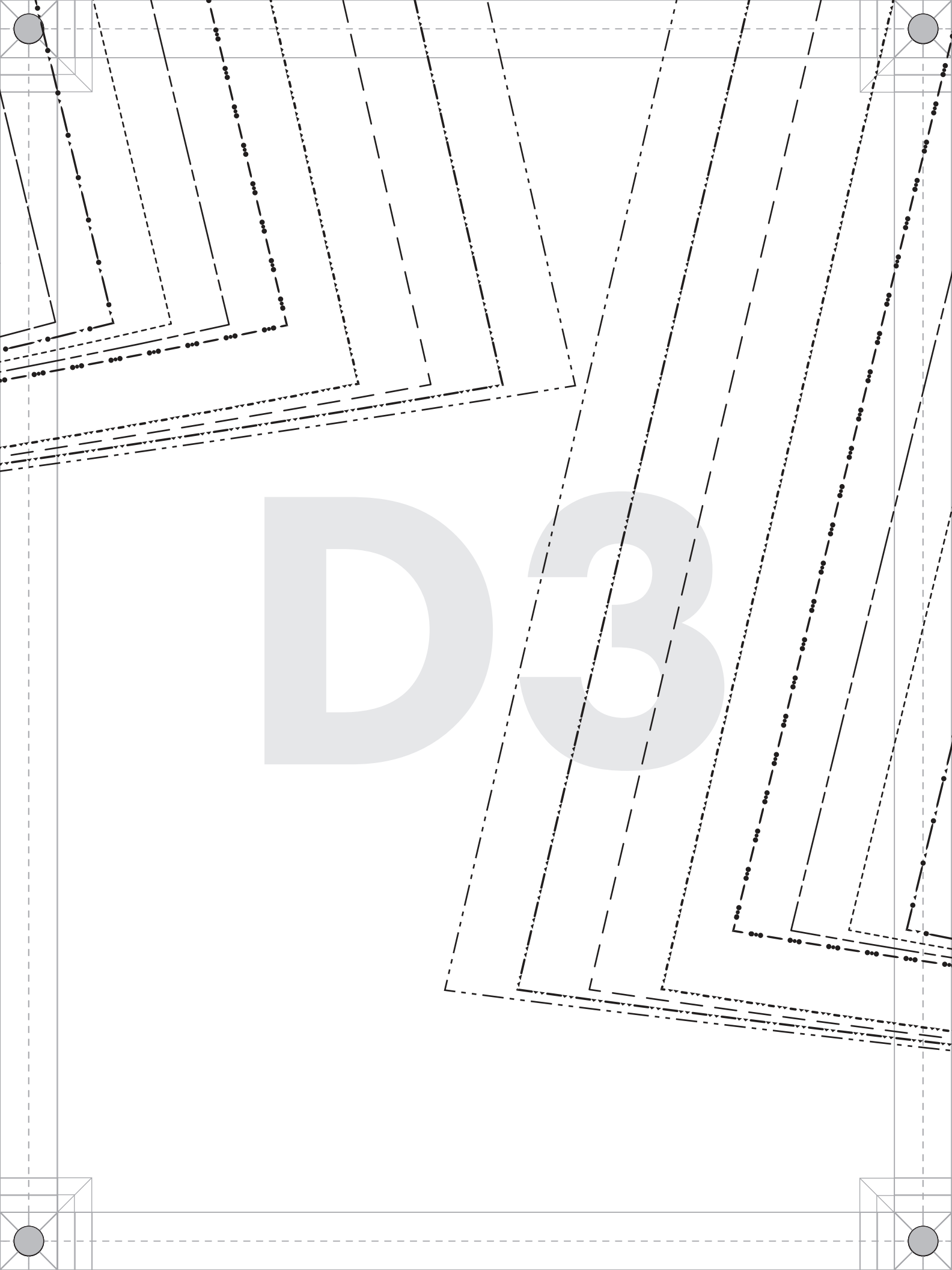
SIDE LOWER (MIDDLE)

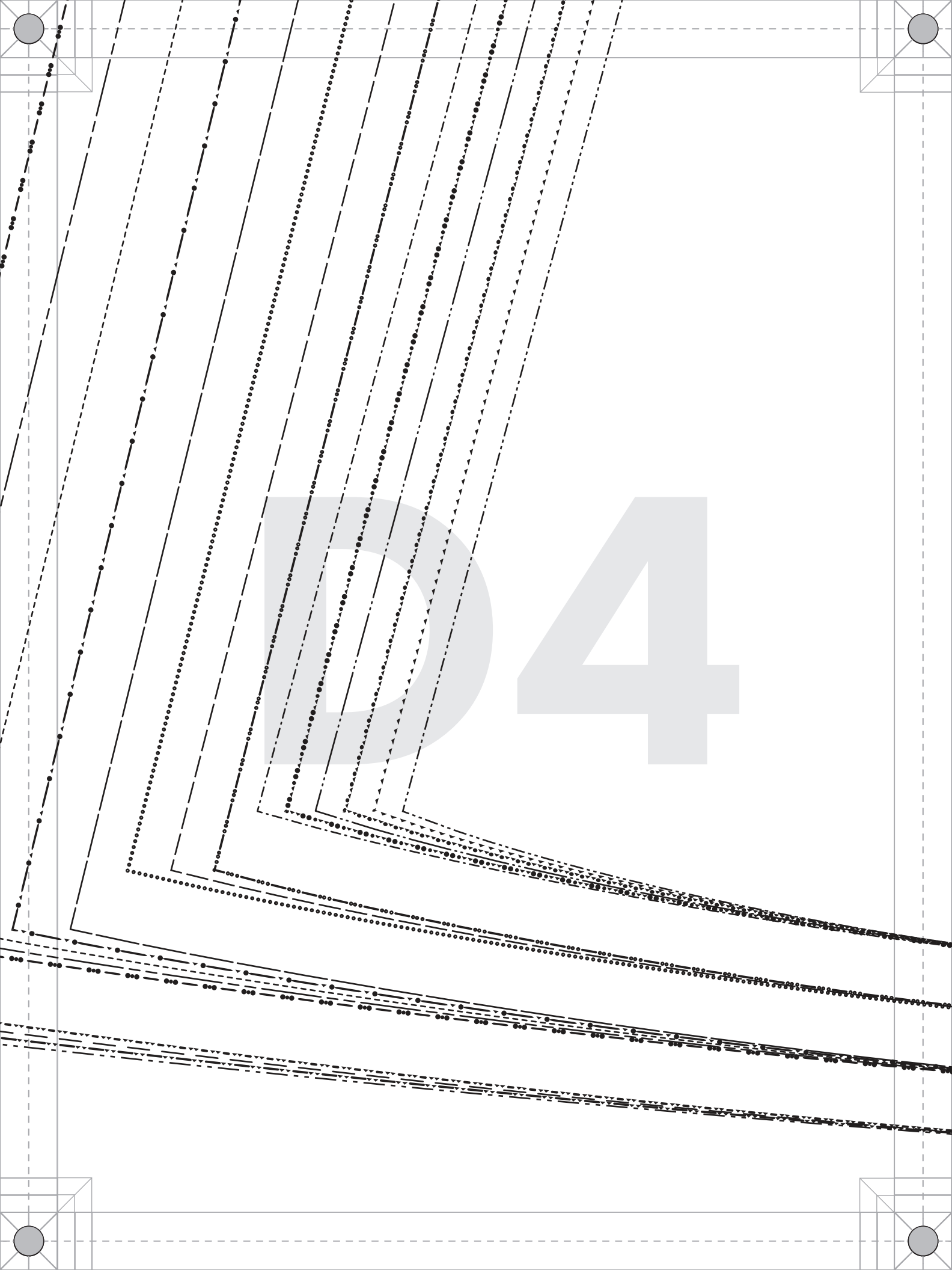
Cut 1 on fold

Ladies Sizes 00 to 32
1/2" seam allowances (SAs) included



GRAINLINE





D5

GRAINLINE

FOLD



#MoodMemoirDress

“The Memoir Dress - View C”

MDF365

C - BACK

CENTER LOWER

Cut 2 mirrored

Ladies Sizes 00 to 32
1 1/2" seam allowances (SA's) included
(Center line seam allowance 1")

GRAINLINE

Center line