



**PLEASE
READ**

Privacy policy

We want to remind you that all rights are reserved to Royal Leather. Copy, Reselling, and spread without authorize is forbidden. But items made using the patterns maybe sold in your own shop. Actions listed above are punishable by law. We hope you understand and appreciate our work. If you have questions or problems – contact us directly via email - royal.leather@yahoo.com
We will help to solve any of your problem.

Thank you and have a fun!

Let's go:

Print the pattern

1

- print it out on right size paper 1:1(100%). How to print a 1:1 paper? When you print it, do check the printer properties to don't change the settings to fit the page, should be at "none", also, you need to set all margins to "0"(if your software has margin option, do it, if not, just leave it there), then you get a 1:1 property print out.

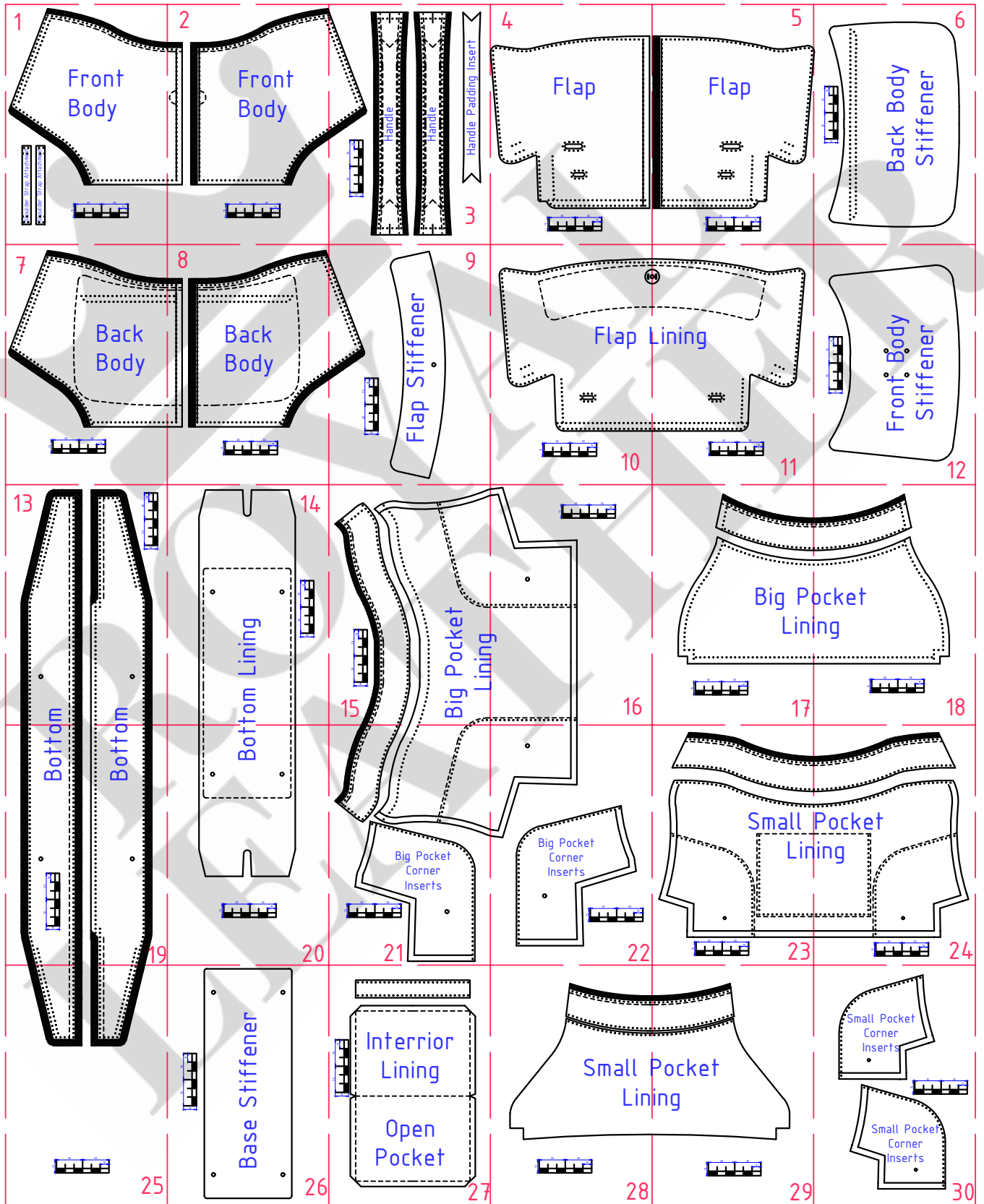
2

Paste them on thick kraft paper

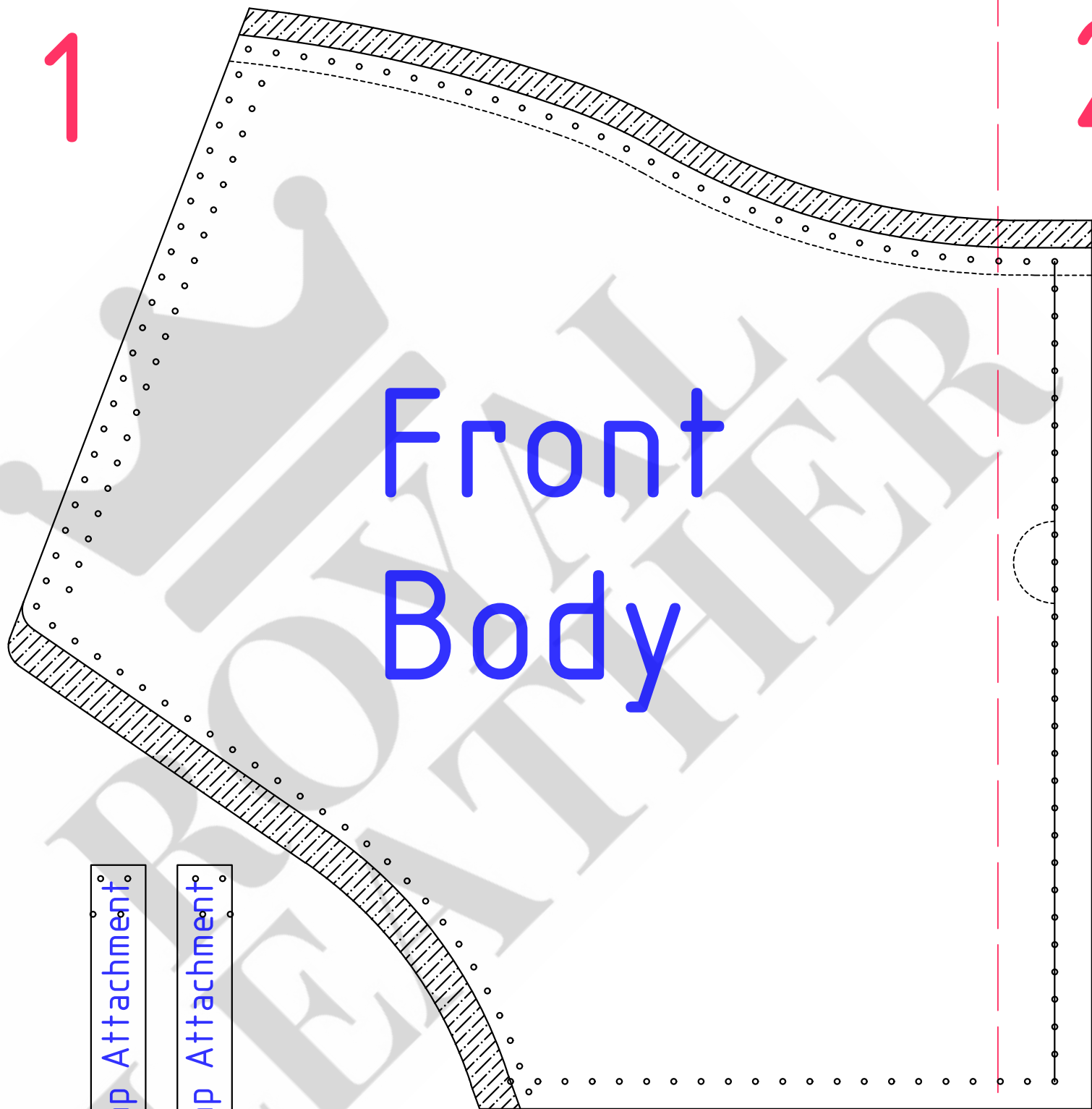
3

Cut off the paper and do it!

A4 Format

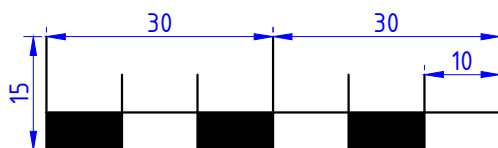


1



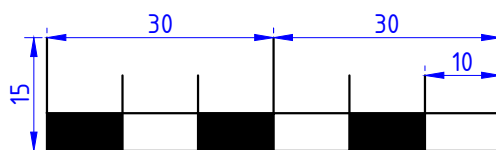
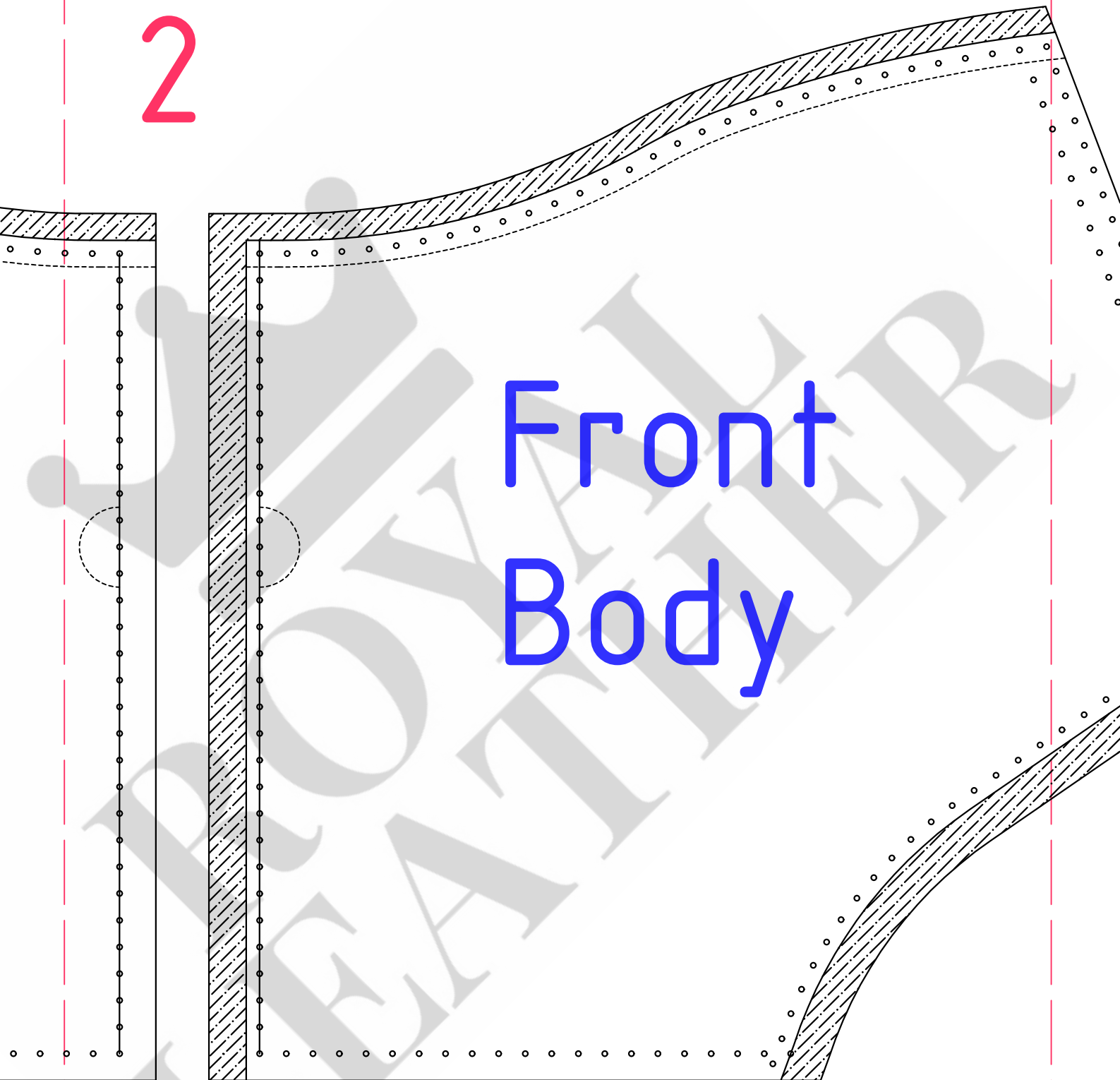
Shoulder Strap Attachment

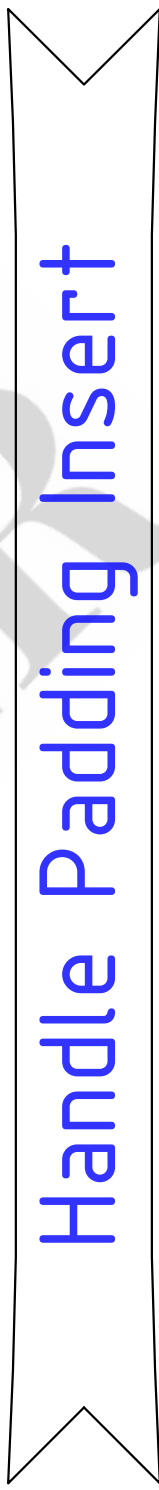
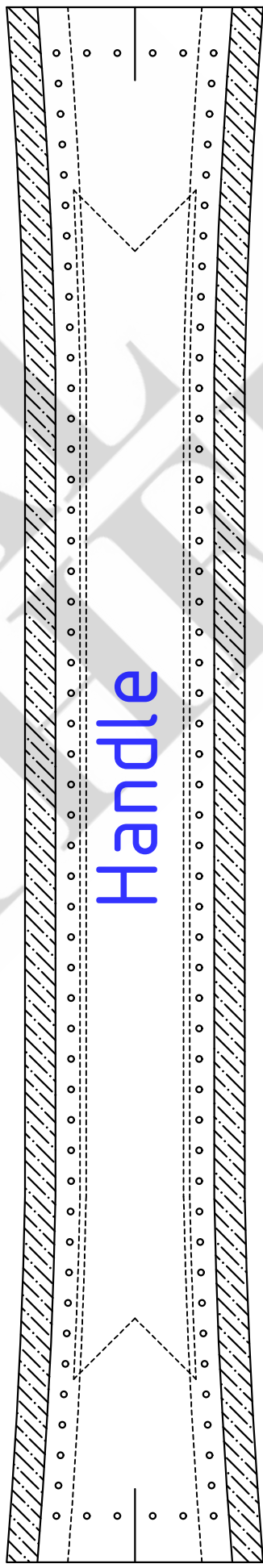
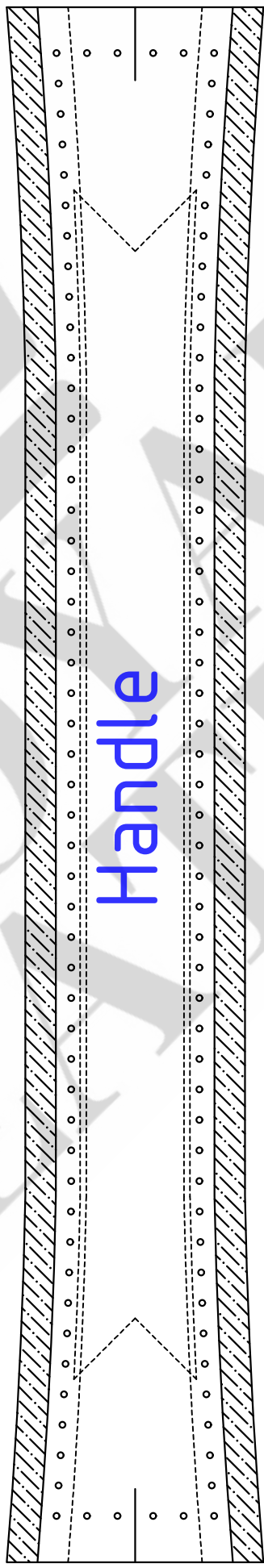
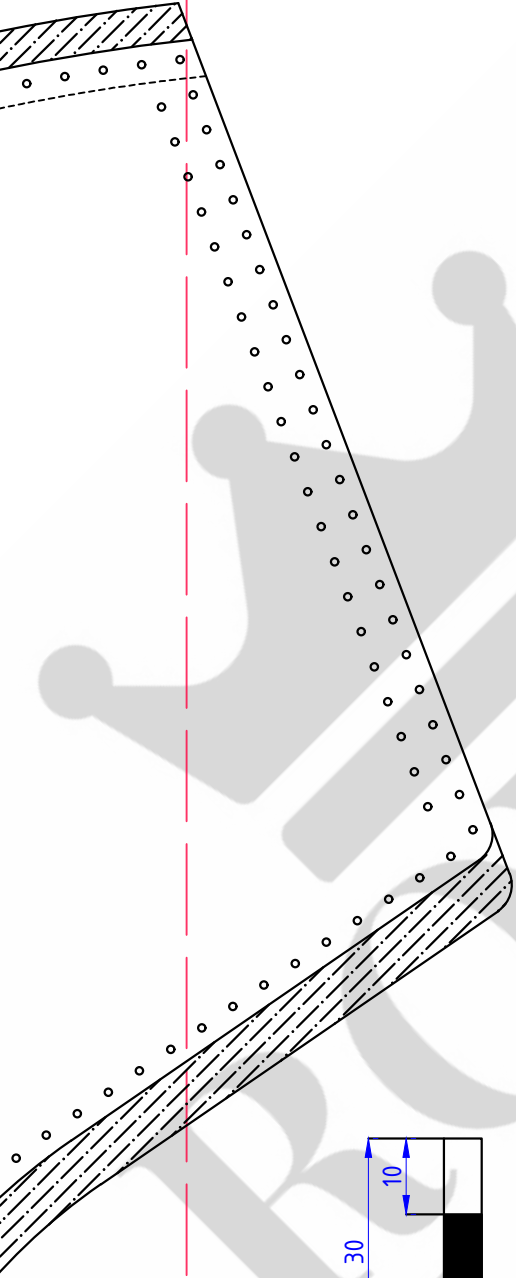
Shoulder Strap Attachment



2

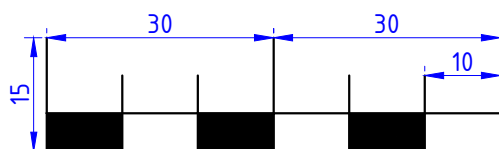
Front Body



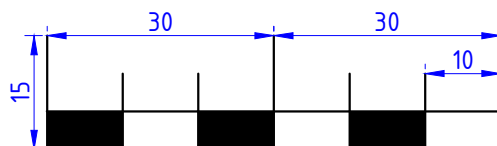
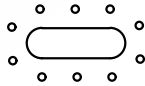
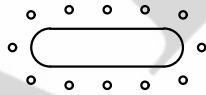


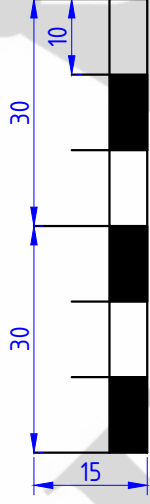
4

Flap



Flap



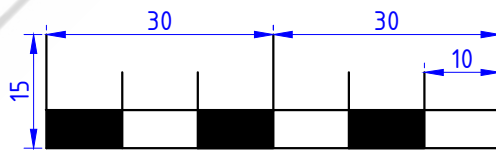
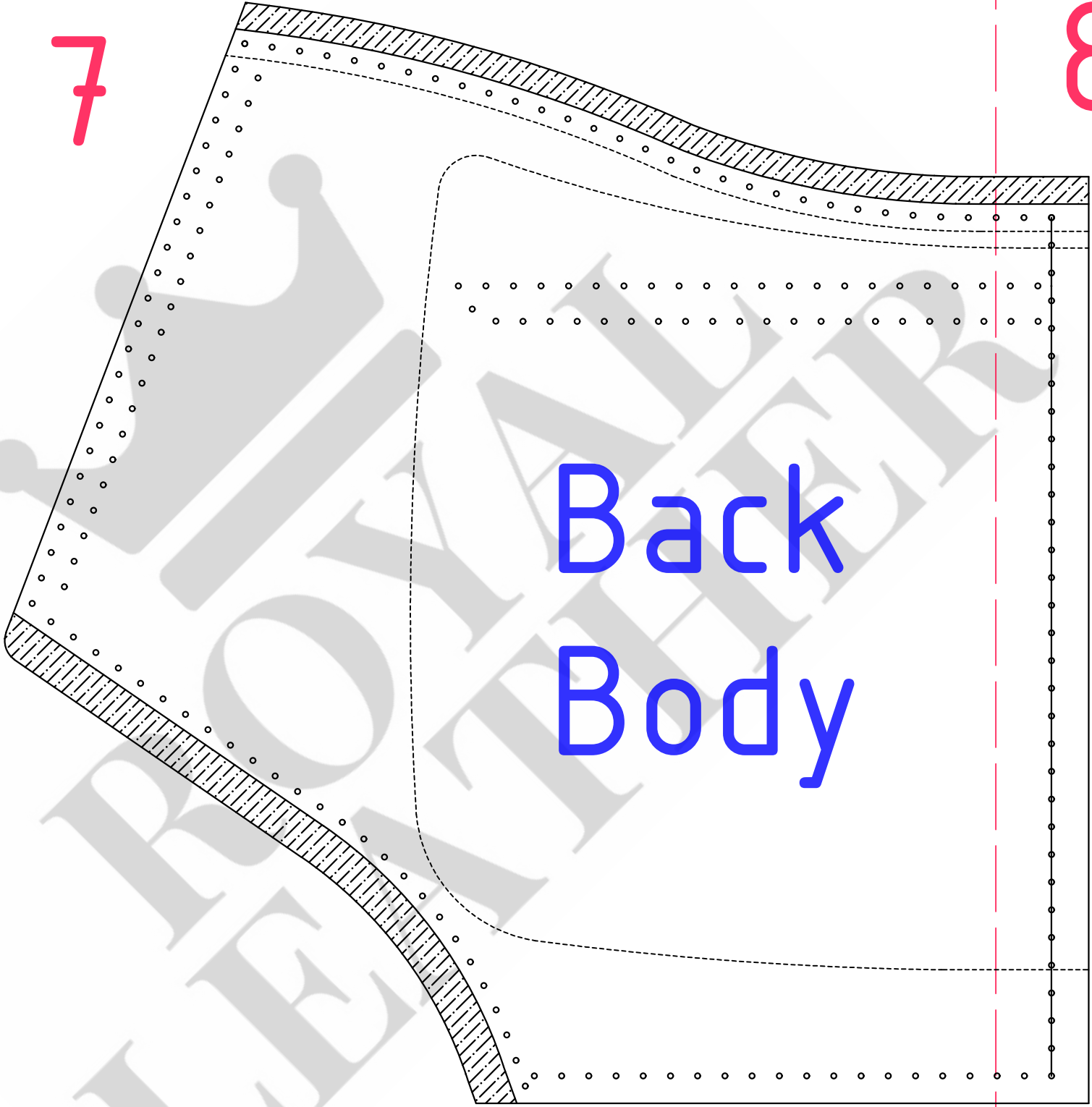


Back Body Stiffener

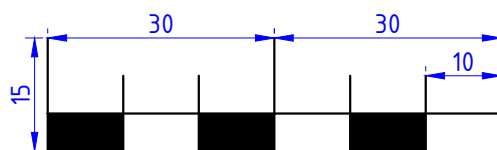
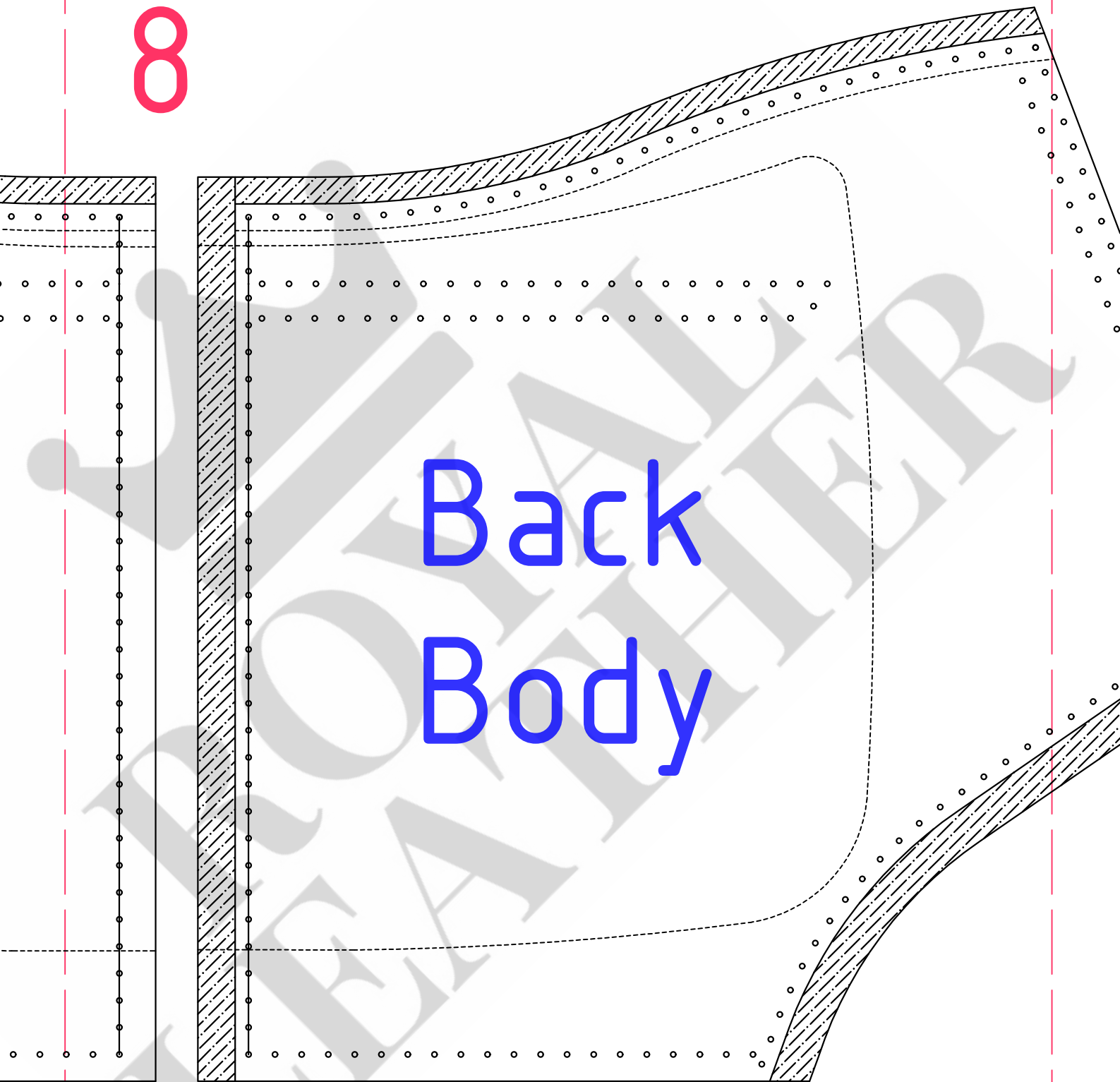
6

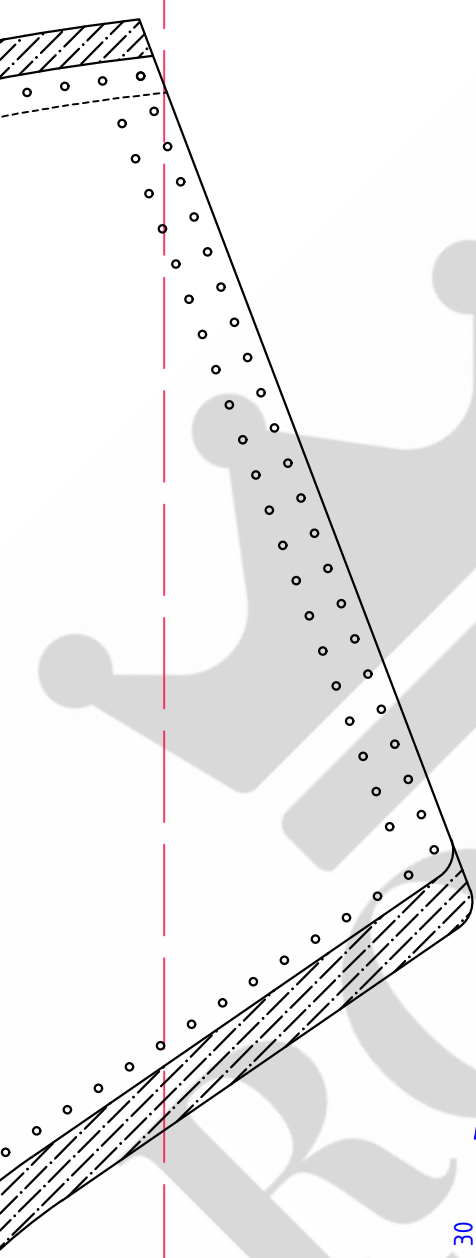
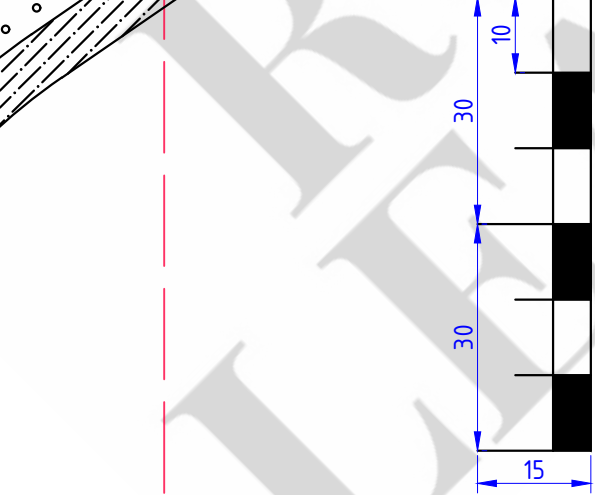
7

8

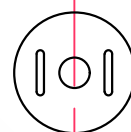


8

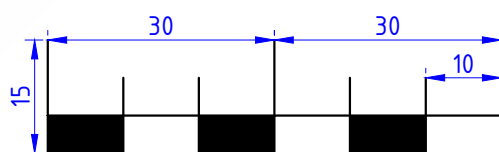
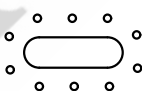




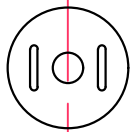
Flap Stiffter



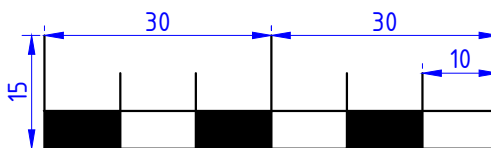
Flap Lin

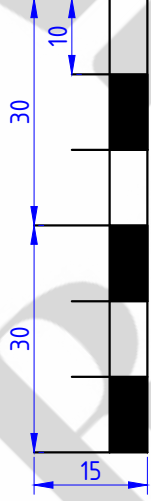


10



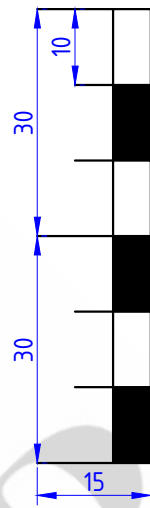
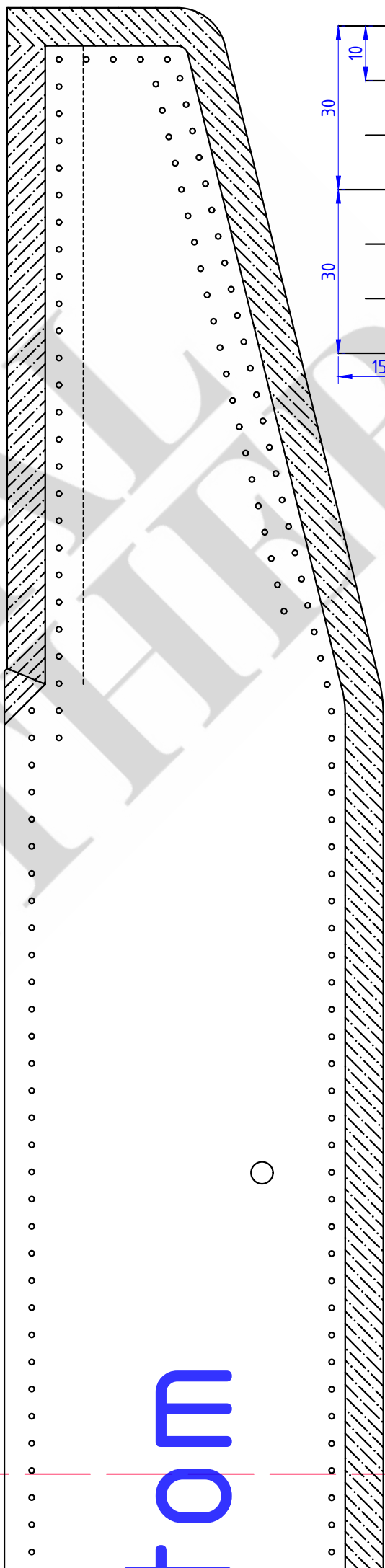
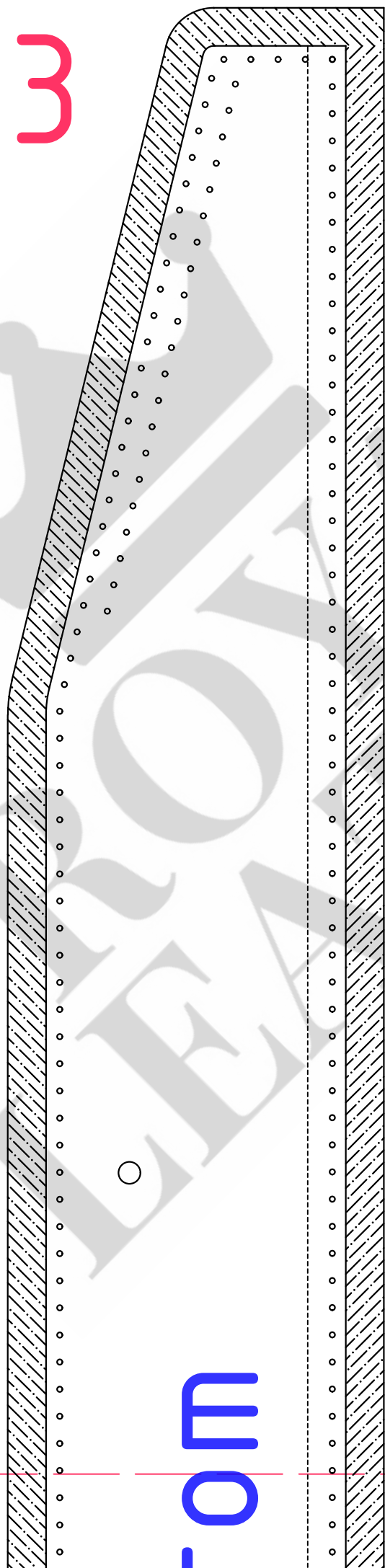
Lining





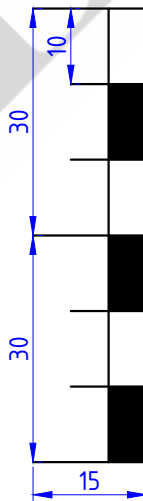
Front Body Stiffener

13

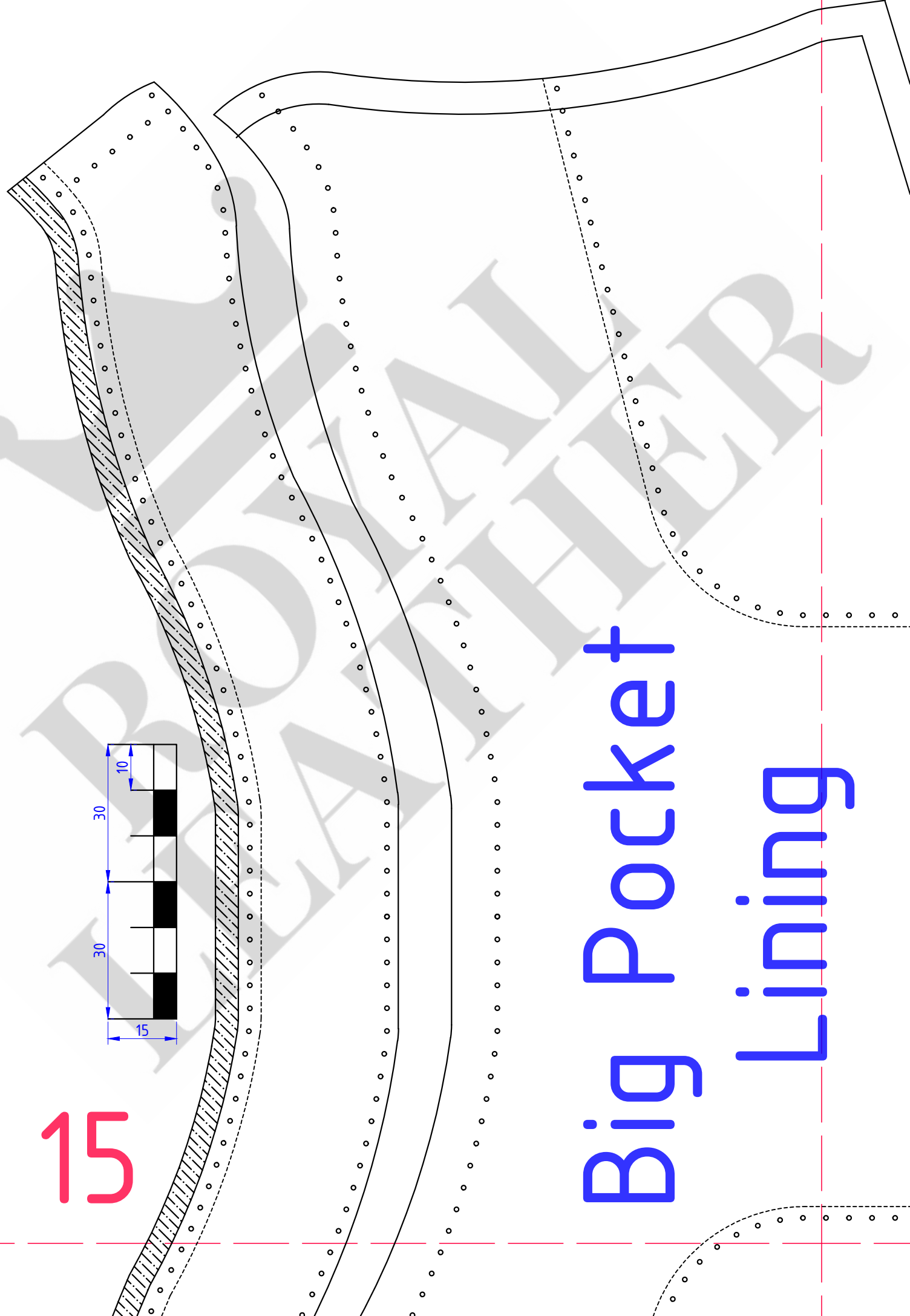
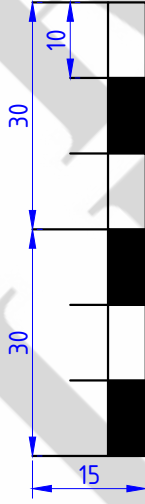


14

Bottom Lining

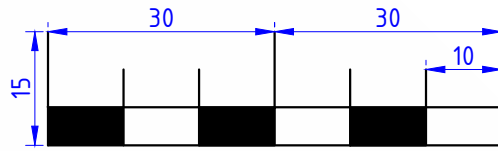


15

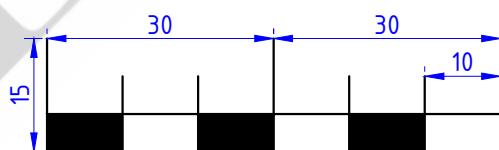


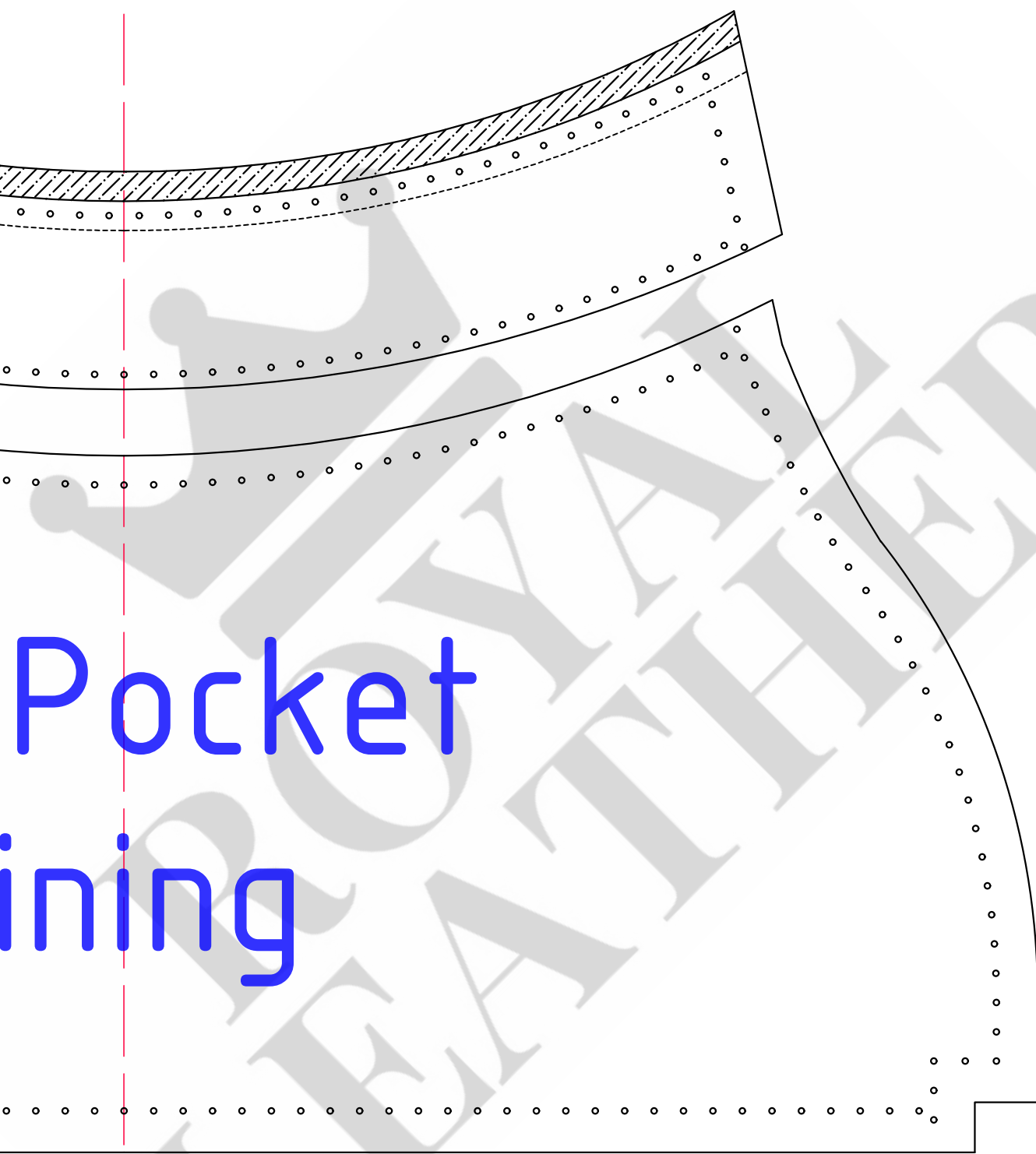
Big Pocket
Lining

Lining

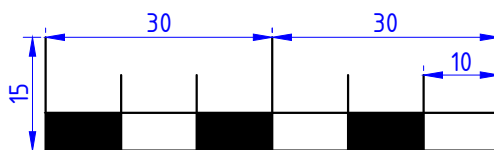


Big Poc Lining

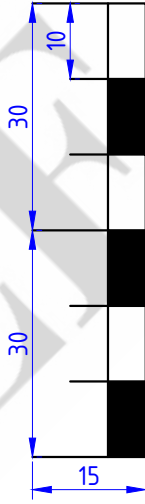




Pocket Lining



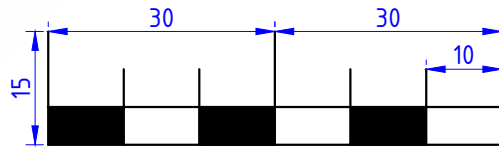
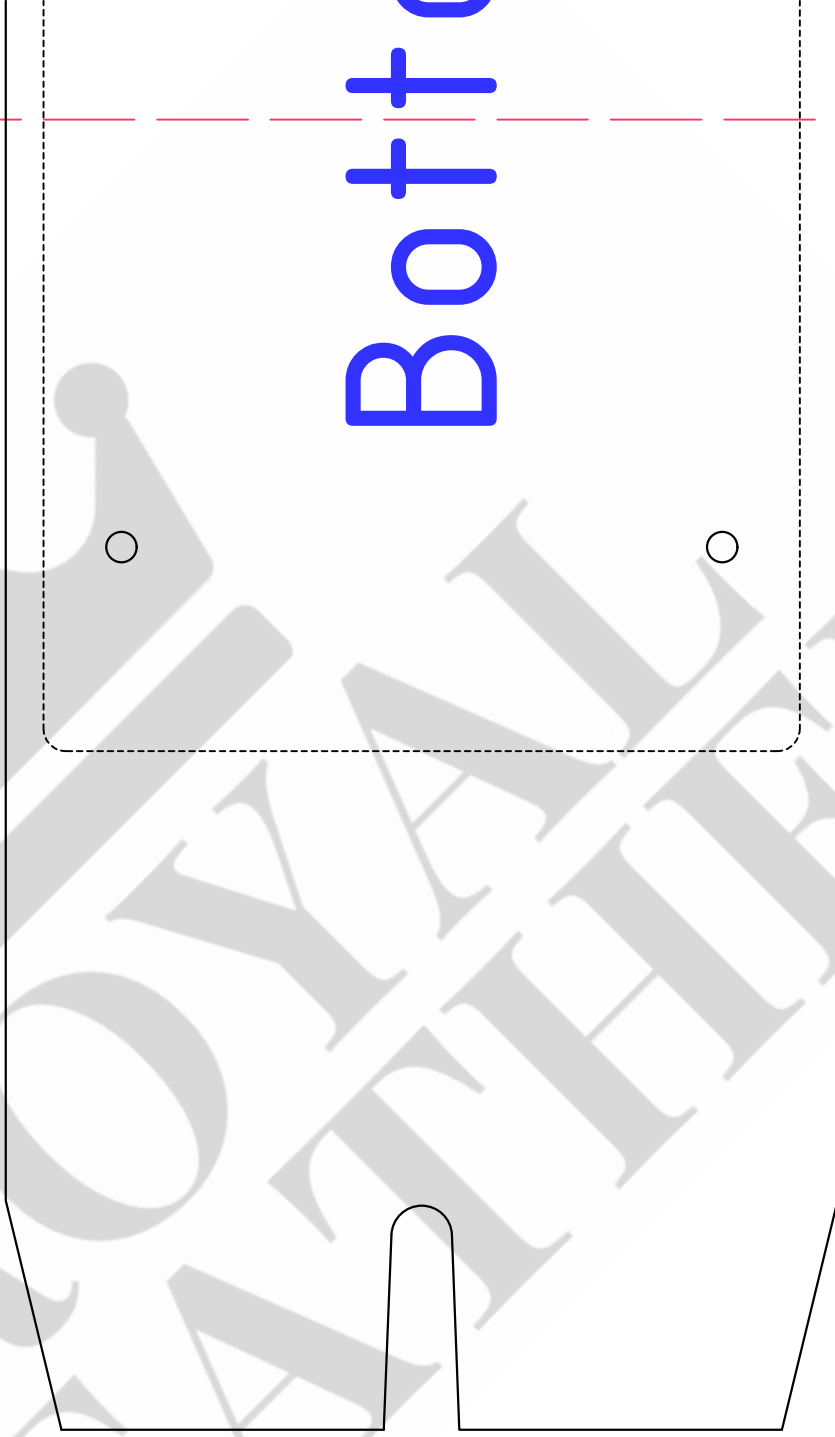
Bottom



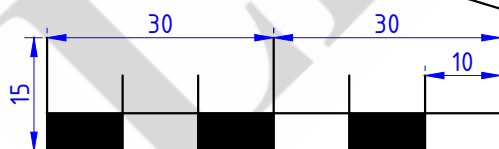
Bottom



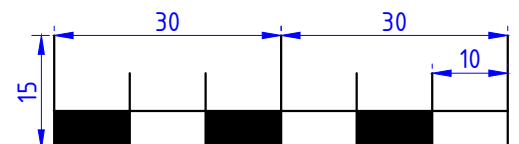
Bottom

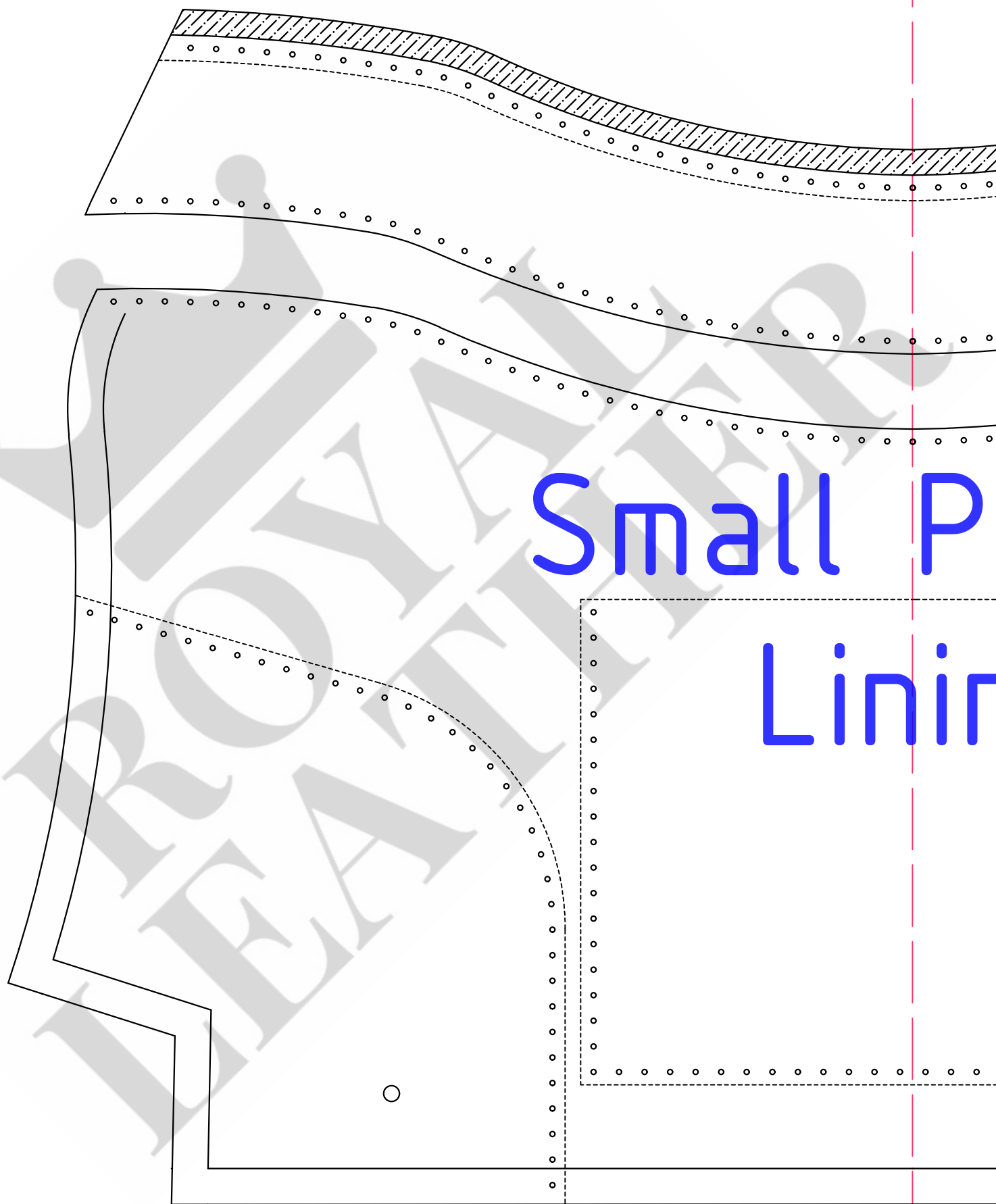


Big Pocket Corner Inserts

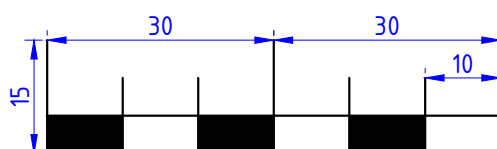


Big Pocket Corner Inserts

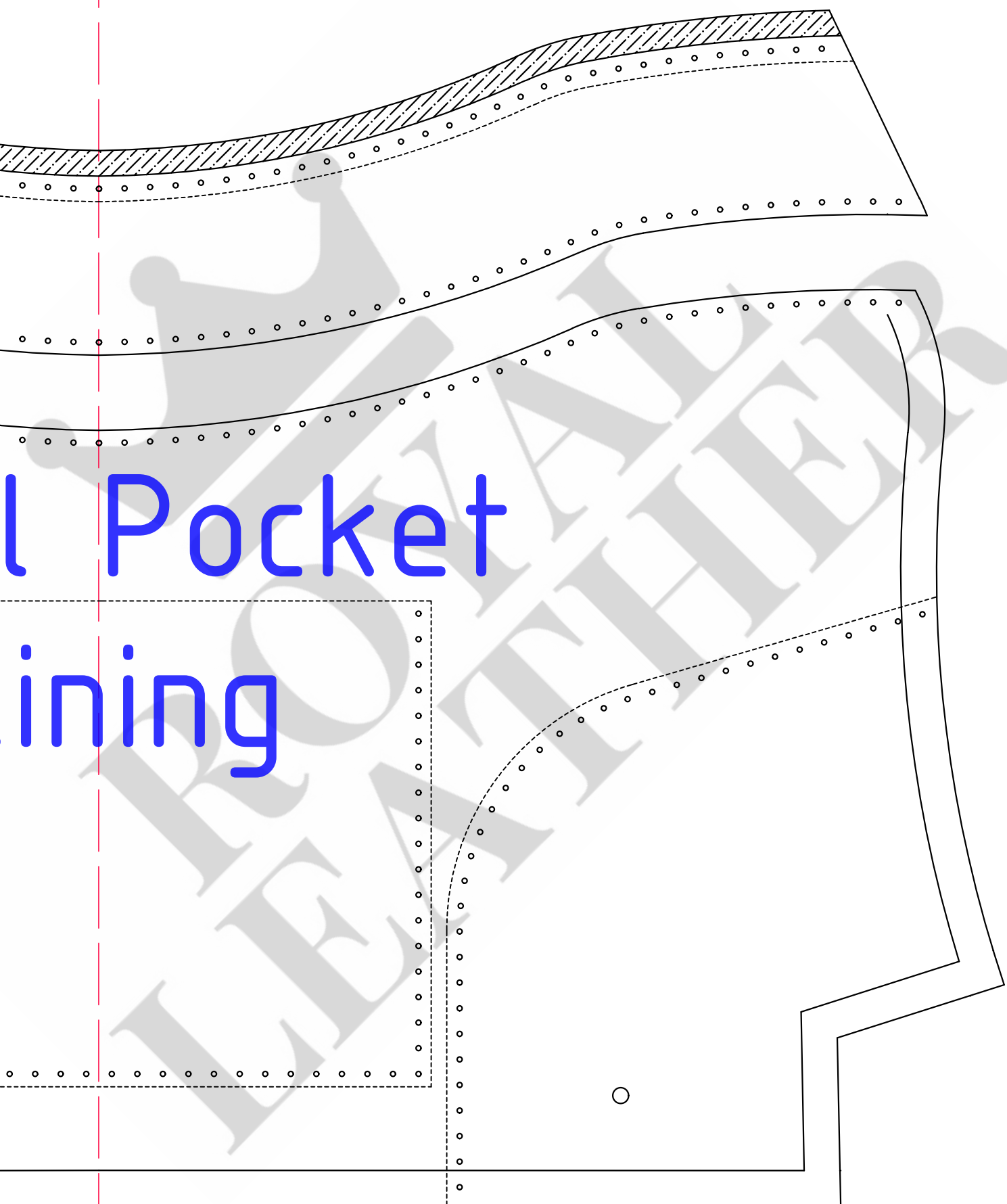




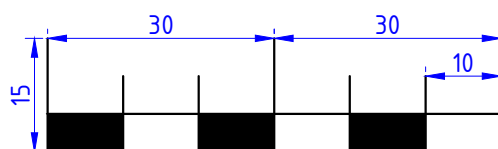
Small P
Linir



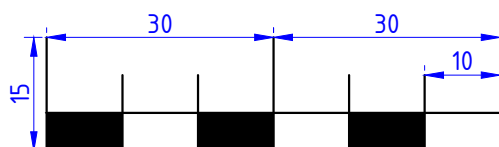
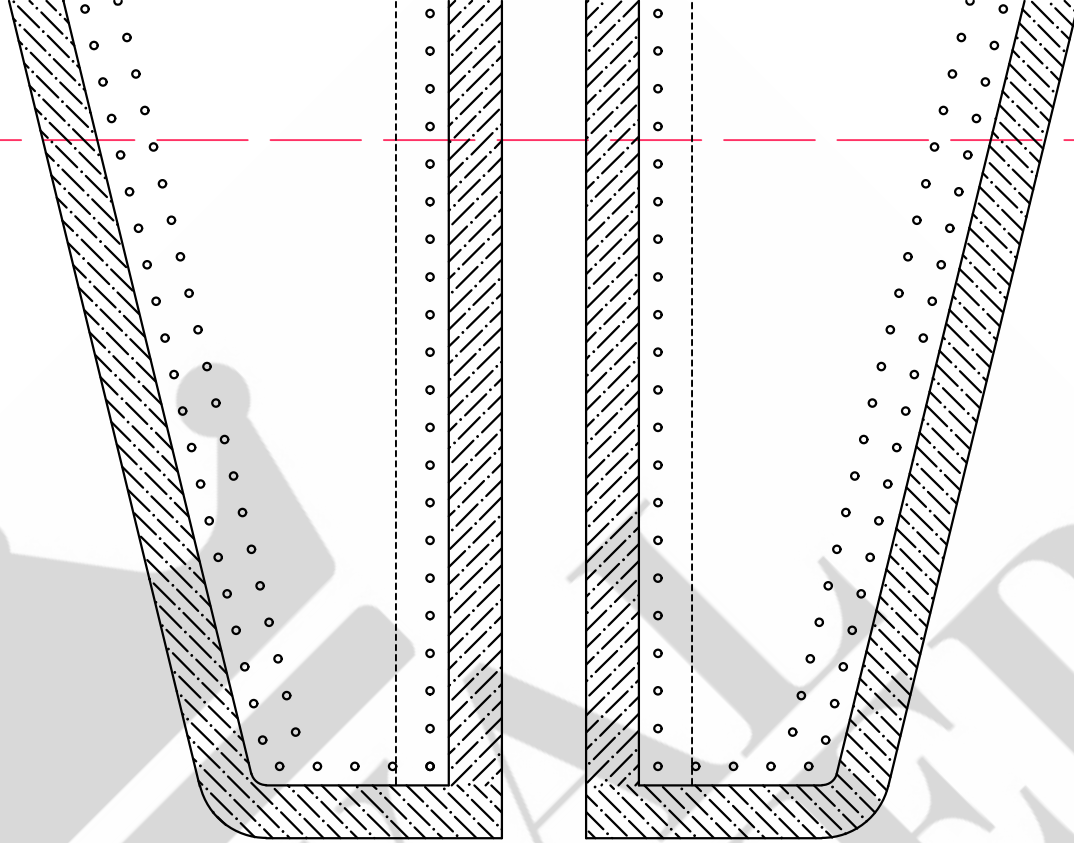
23

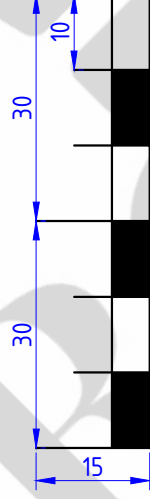


l Pocket
ining



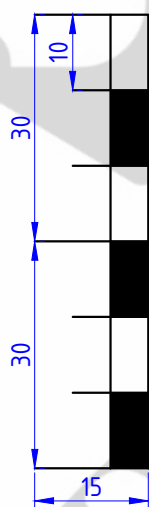
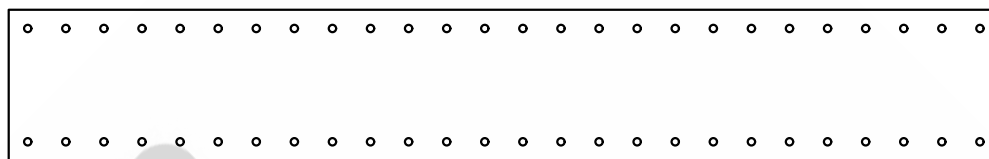
24





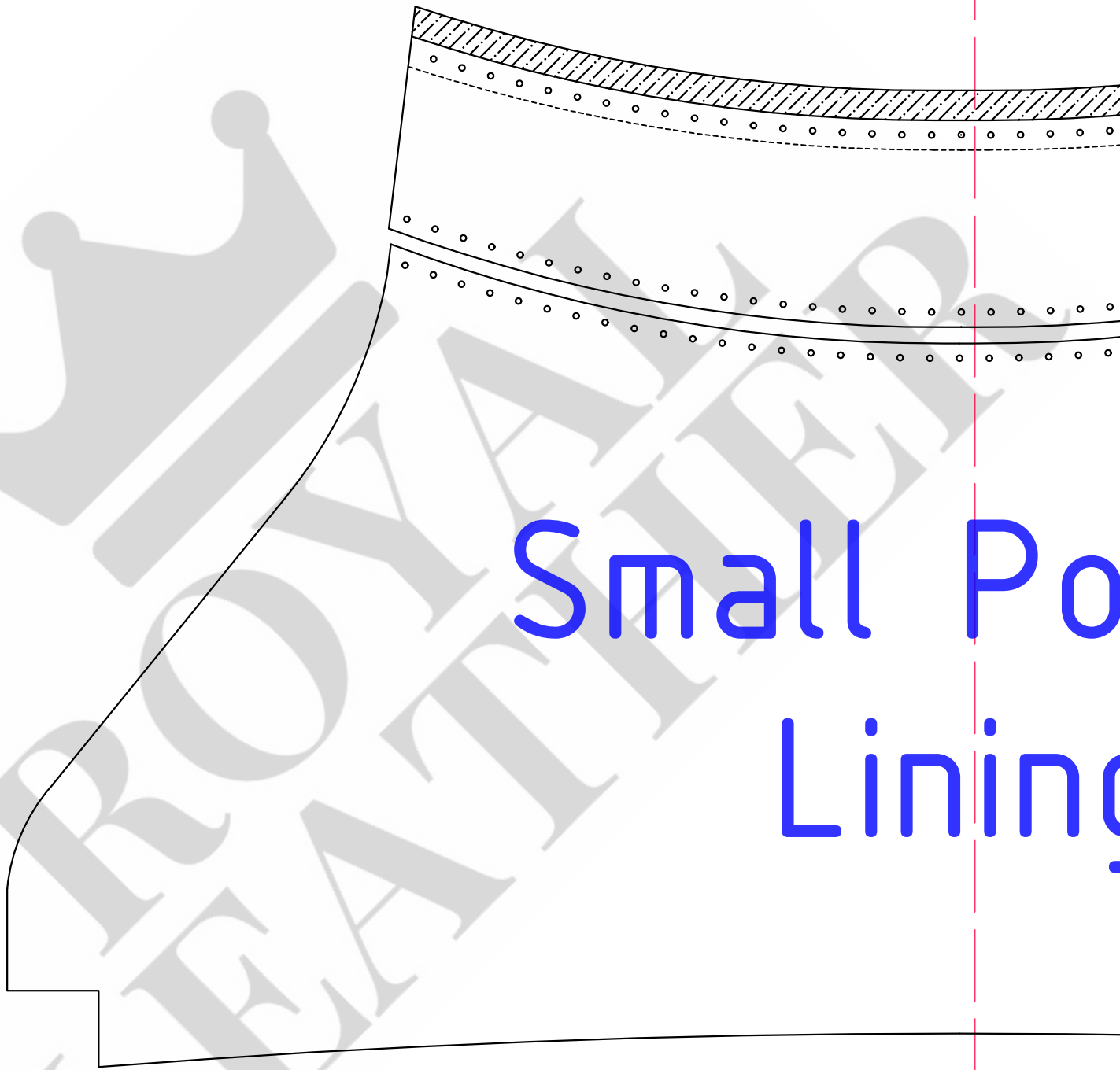
Base Stiffener



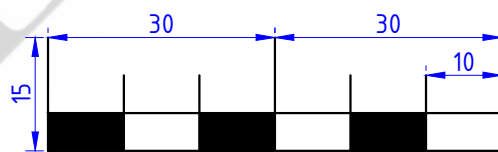


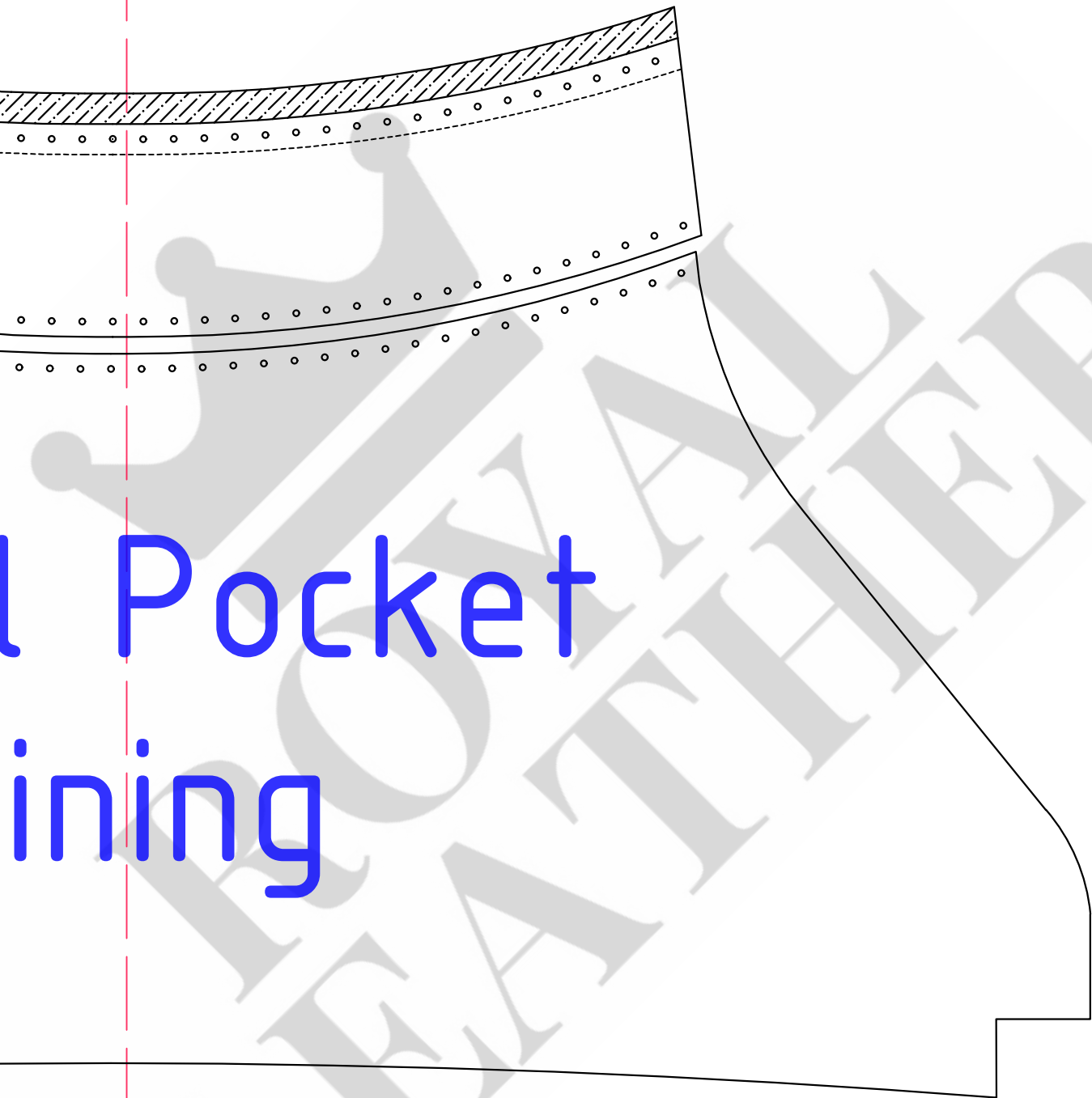
Interior
Lining

Open
Pocket

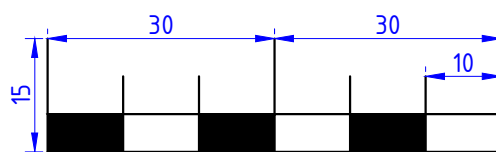


Small Pond Lining

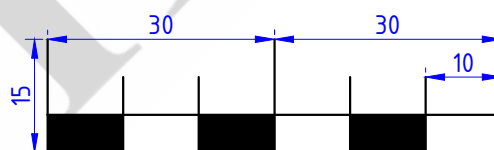




l Pocket ining



Small Pocket
Corner
Inserts



Small Pocket
Corner
Inserts

30