

# IN THE FOLDS

in collaboration with

**Peppermint**  
MAGAZINE

## BUTTON-UP DRESS SEWING PATTERN

FEEL FREE TO HACK THIS PATTERN,  
ADD TO THIS PATTERN, LOVE THIS PATTERN  
AND TO MAKE IT OVER & OVER  
BUT PLEASE REMEMBER THAT IT'S  
FOR PERSONAL USE ONLY

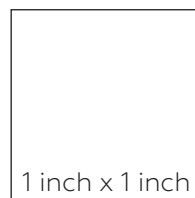
### HAPPY SEWING!

©Emily Hundt

### PATTERN SIZE KEY

— — — — —	SIZE A
-----	SIZE B
.....	SIZE C
- . - . - . - . - .	SIZE D
.....	SIZE E
- . - . - . - . - .	SIZE F
-----	SIZE G
.....	SIZE H
—————	SIZE I
- . - . - . - . - .	SIZE J

### TEST SQUARE



5cm x 5cm

BUTTON-UP DRESS

CENTRE BACK PANEL

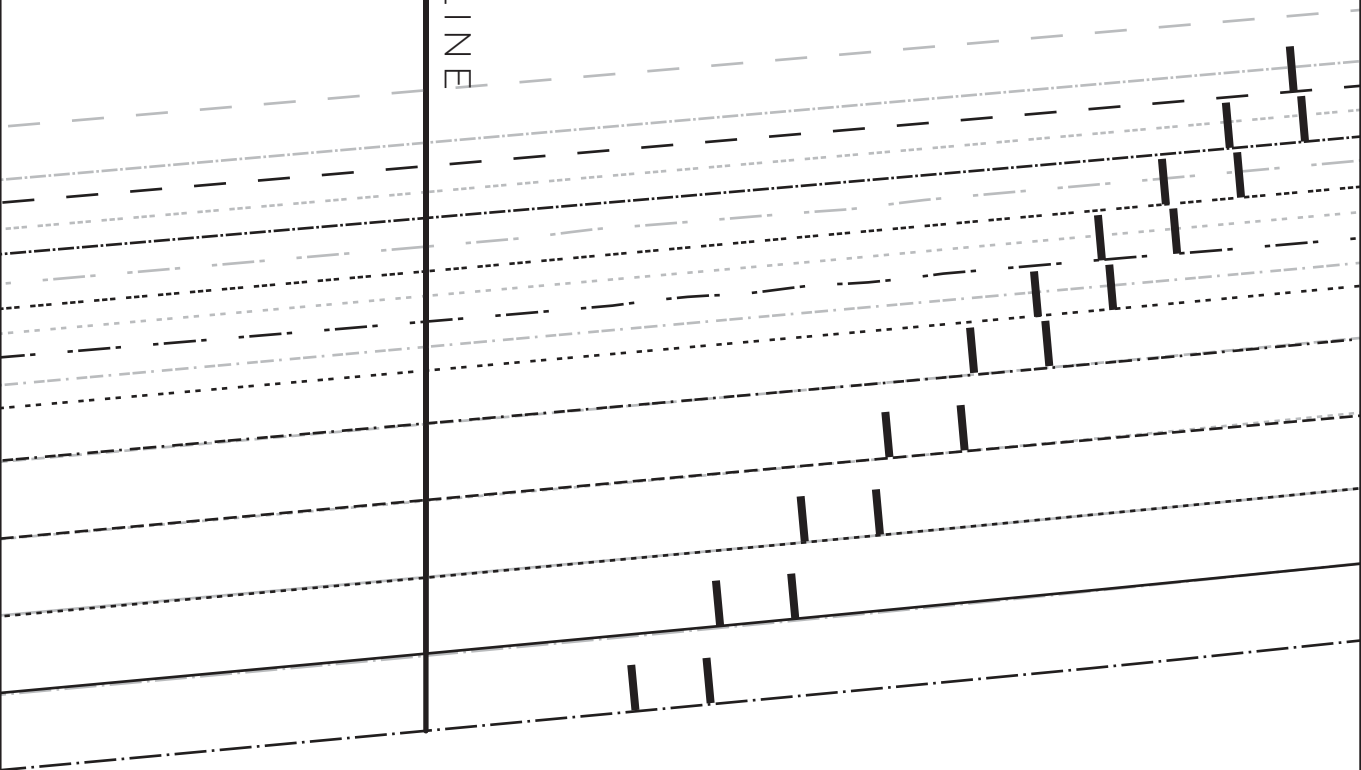
CUT 1 ON FOLD

3

LENGTHEN / SHORTEN LINE

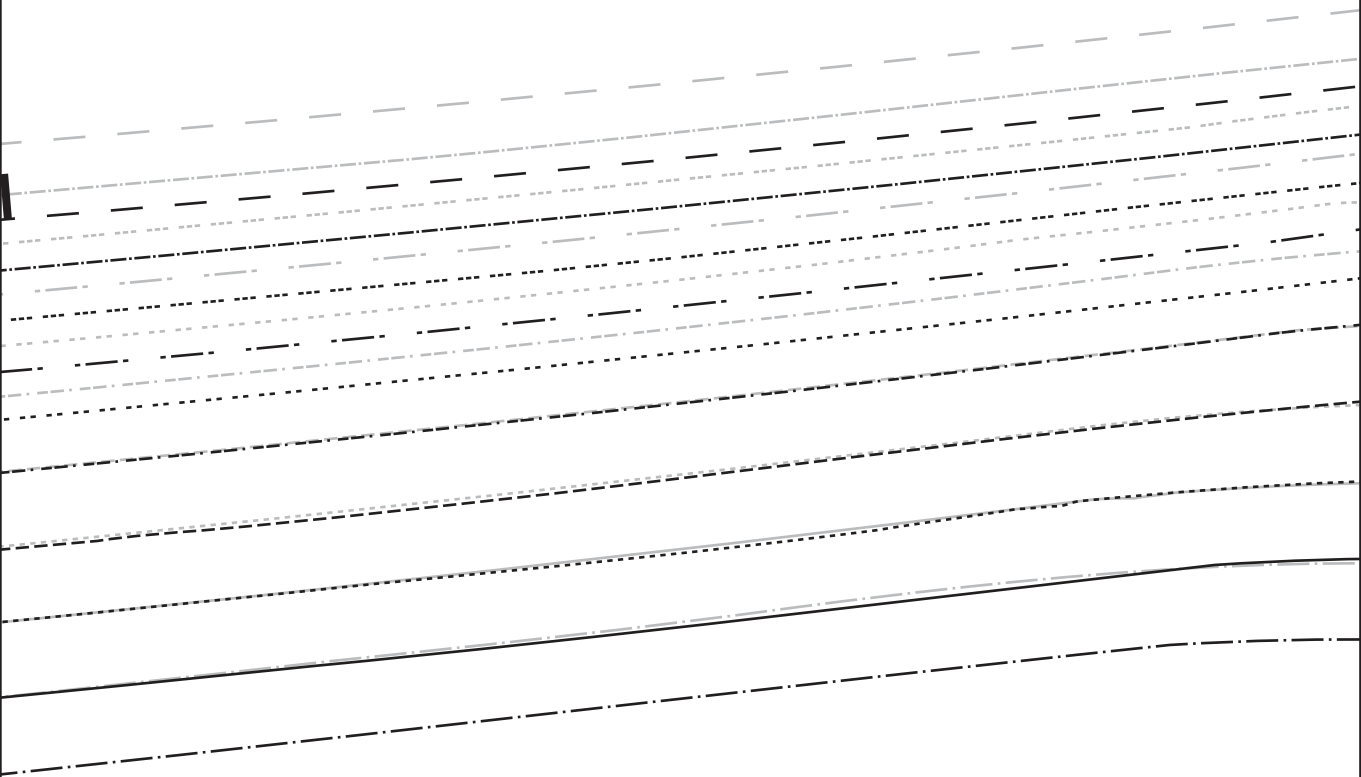
# IN THE FOLDS

1B  
in collaboration with



1C

1D



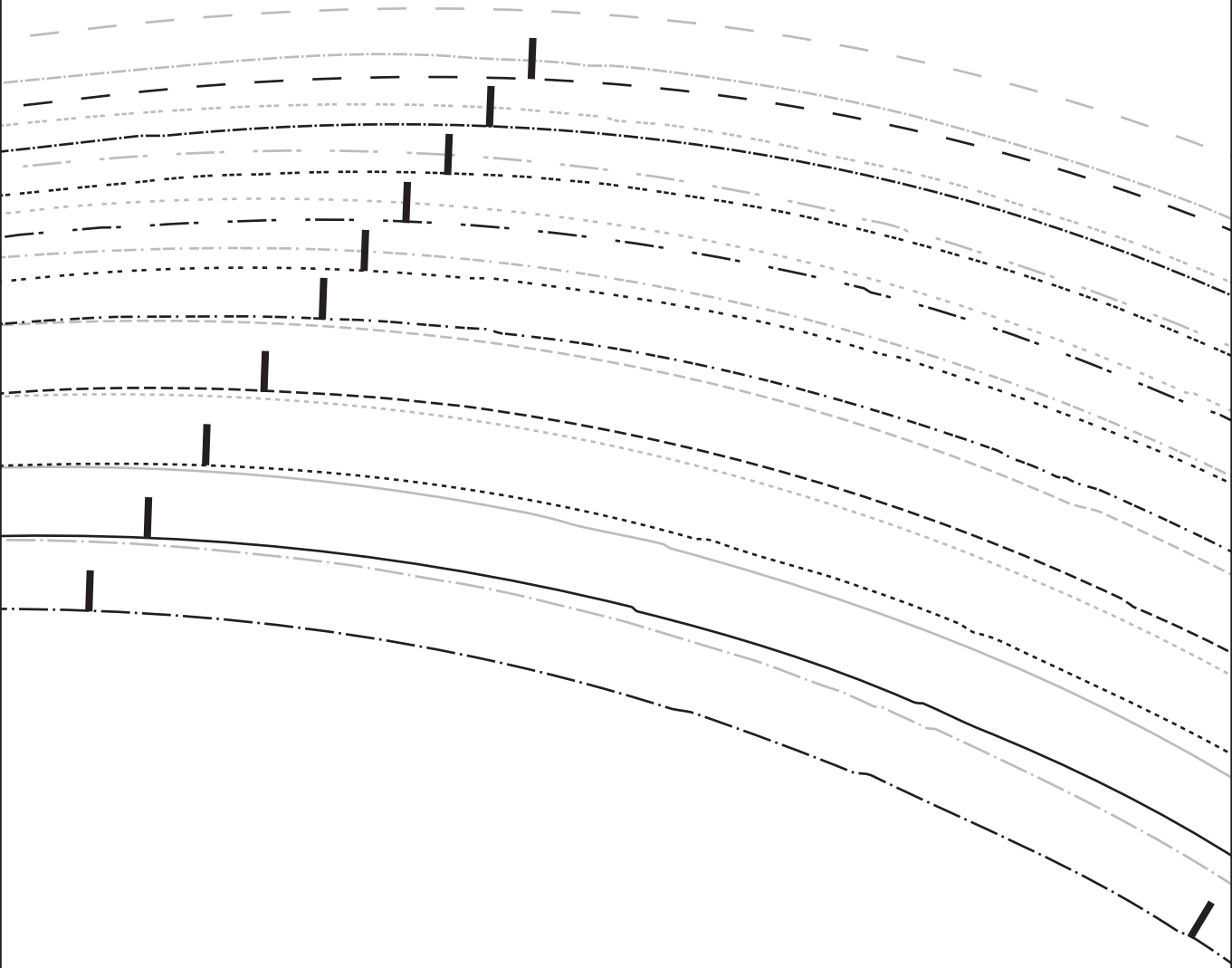
2D

CENTRE BACK (PLACE ON FOLD)

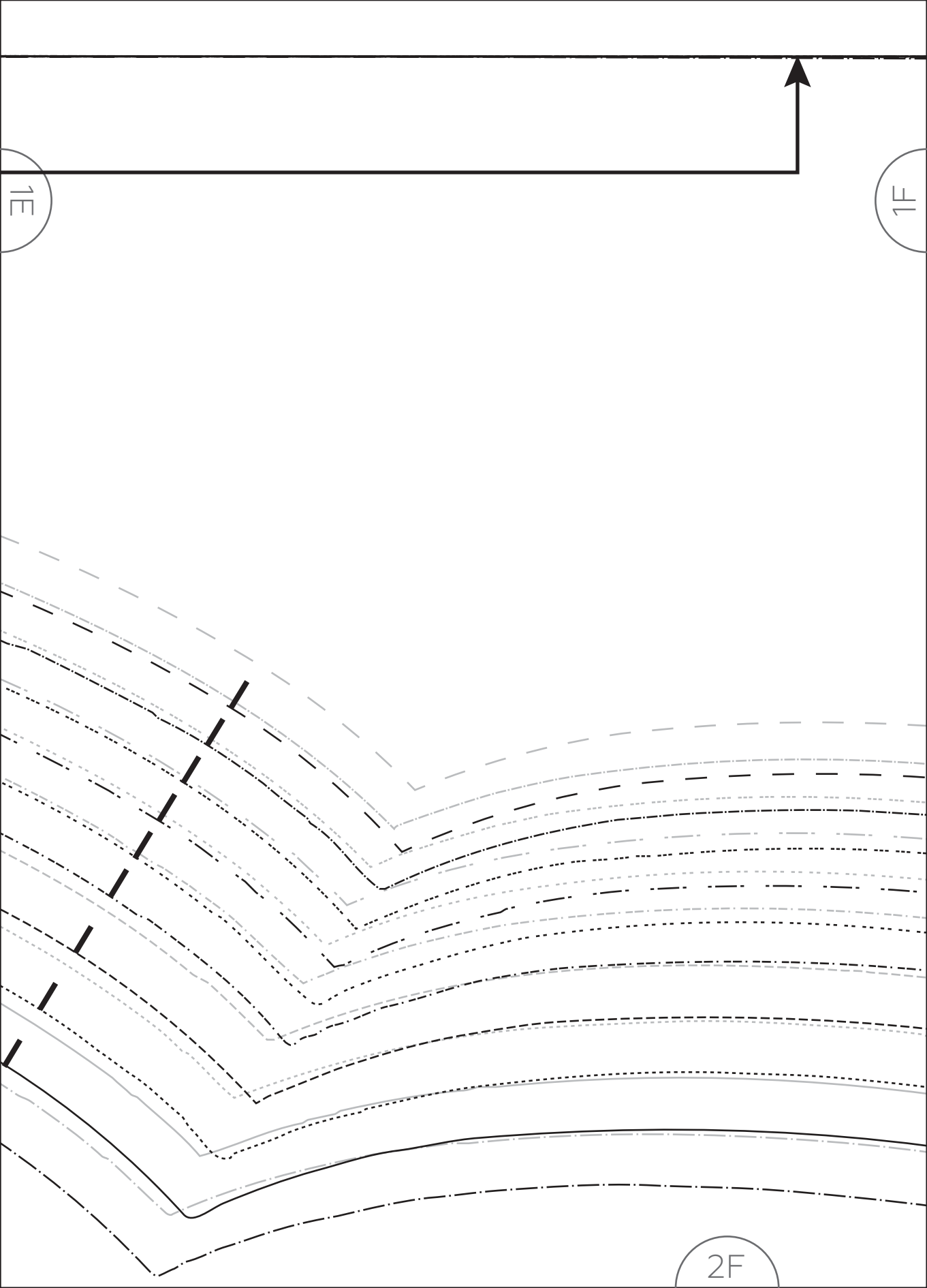
GRAINLINE

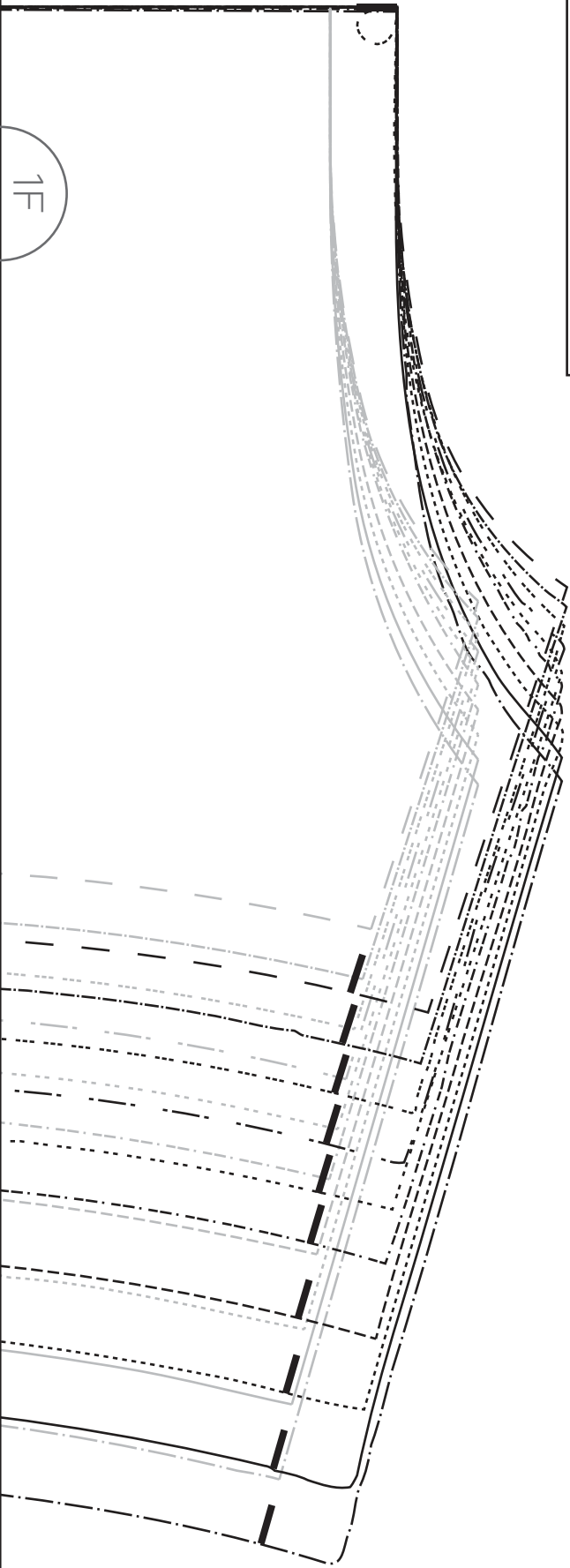
1E

1D



2E





SHARE YOUR MAKES



#peppermintbuttonupdress

Tag us

@inthefolds











@peppermintmagazine

2G

We're super excited to bring you these patterns in partnership with the lovely people at **The Fabric Store**. With a passion for all things sewing, they stock an incredible range of fabrics – think quality linen, silk, cotton, merino and even leather – at their Sydney, Melbourne, Brisbane and New Zealand stores, as well as a small selection online.

# The Fabric Store

## PATTERN SYMBOL KEY

	NOTCH
	DOUBLE NOTCH
	DRILL HOLE
	BUTTON HOLE
	BUTTON PLACEMENT
	CUTTING LINE
	STITCH LINE
	GRAINLINE
	PLACE PATTERN ON FOLD
	LENGTHEN / SHORTEN LINE

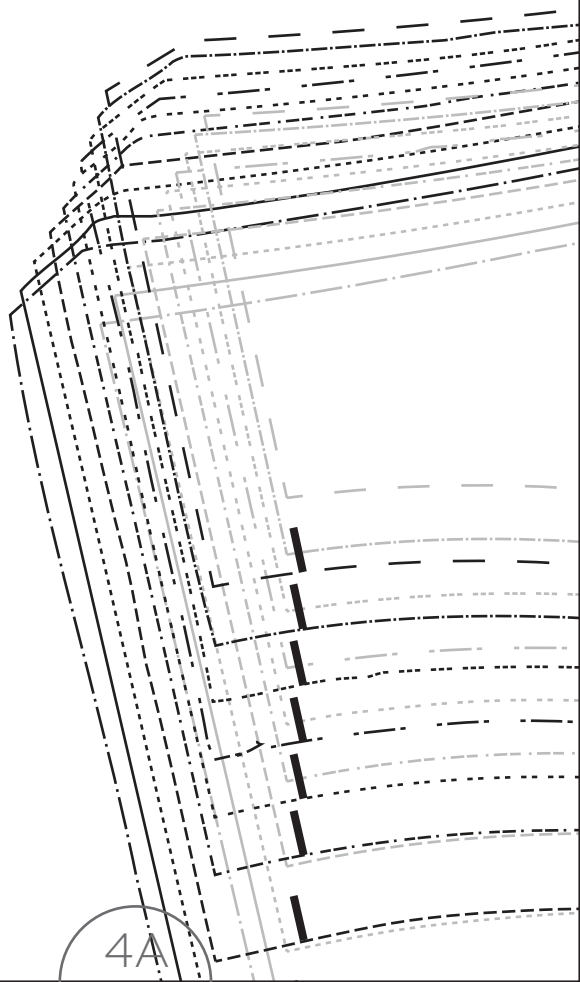
PLEASE NOTE:  
SEAM ALLOWANCES ARE INCLUDED  
AND ARE 1.2cm (½") UNLESS  
OTHERWISE STATED (IN INSTRUCTIONS)

SHARE YOUR MAKES

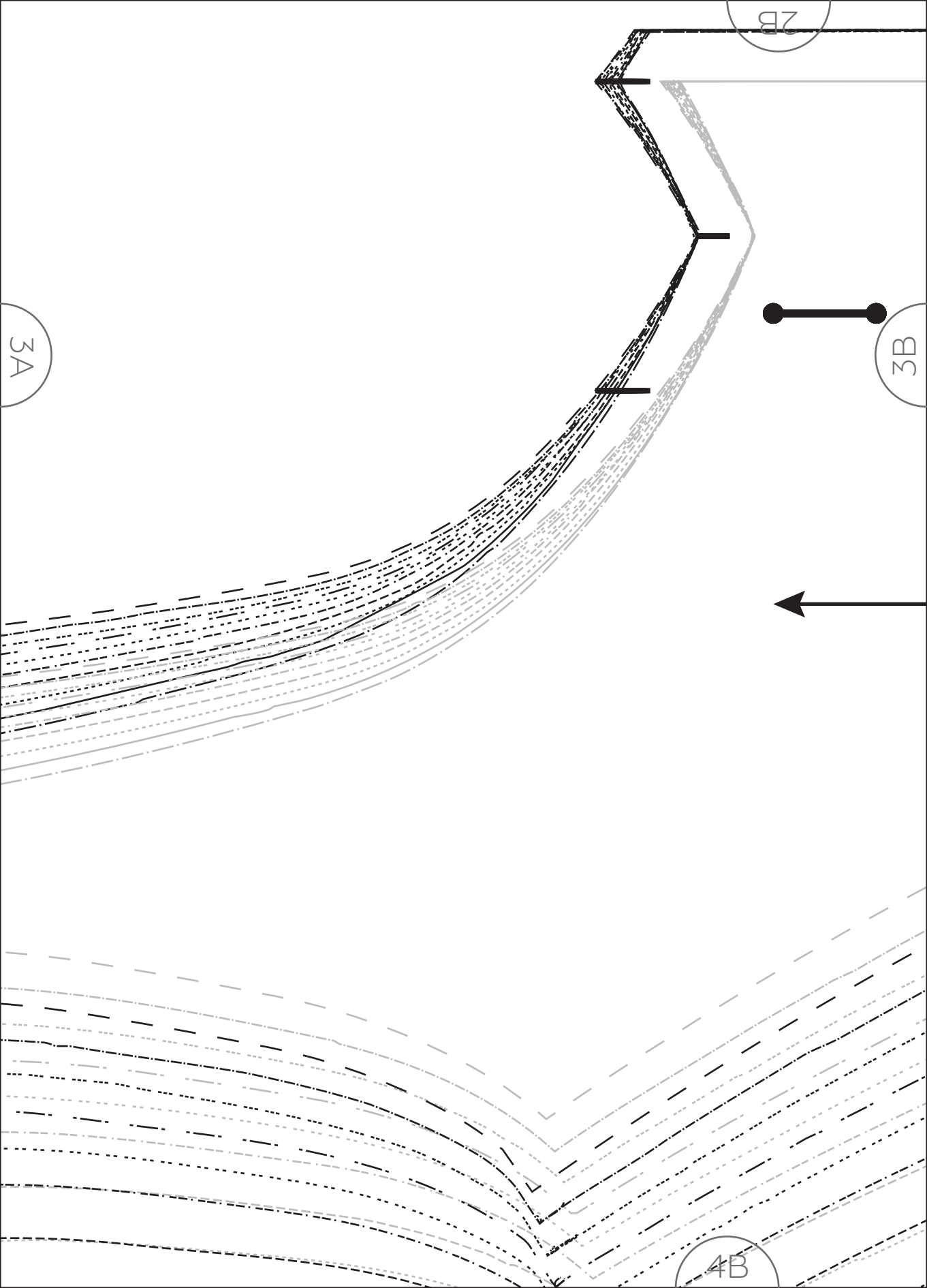


#peppermintbuttonupdress

Tag us  
@inthefolds  
@peppermintmagazine







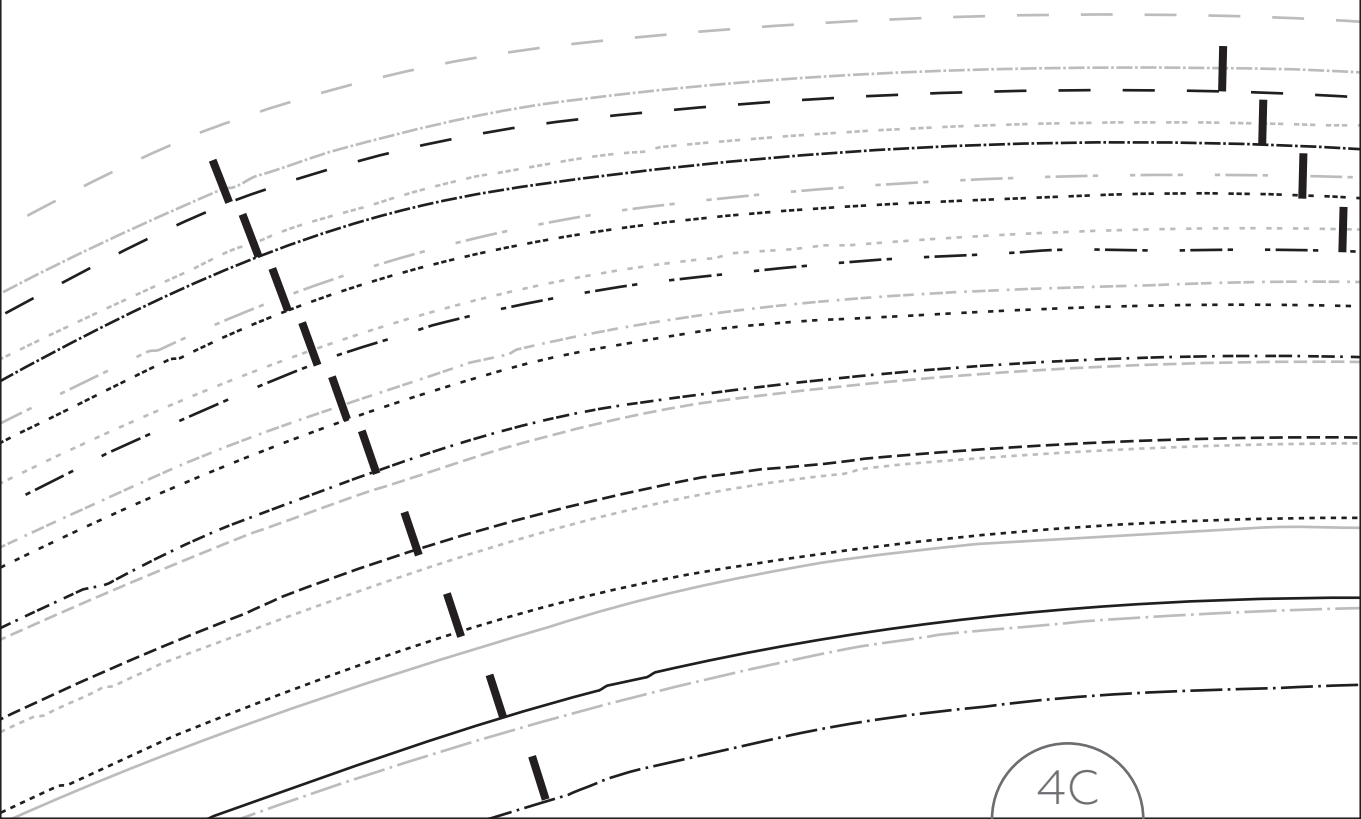
2C

3C



3B

4C



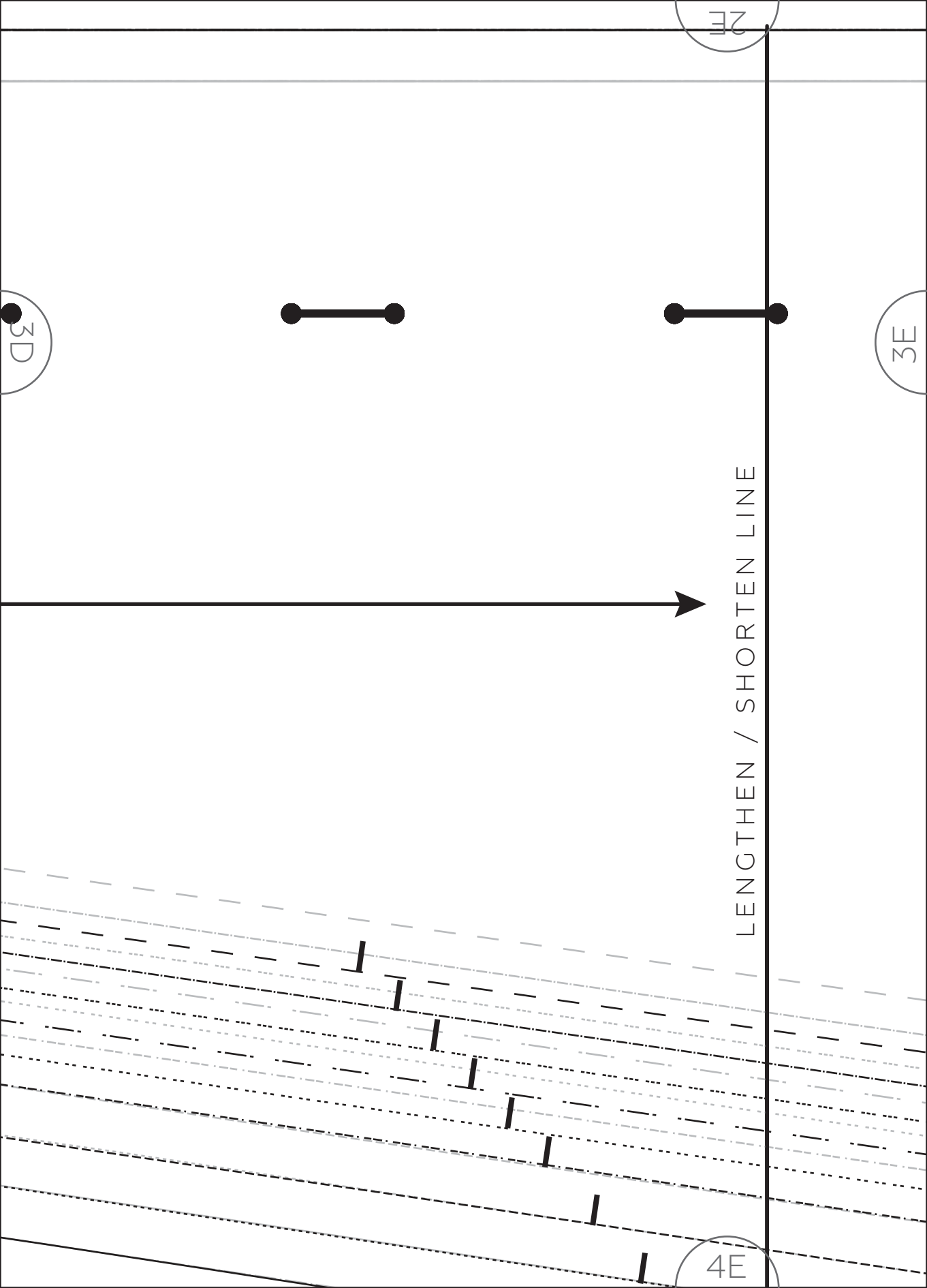
2D

3D

3C

GRAINLINE

4D



# IN THE FOLDS

in collaboration with

*Peppermint*  
MAGAZINE

## BUTTON-UP DRESS

CENTRE FRONT PANEL

CUT 1 PAIR

1



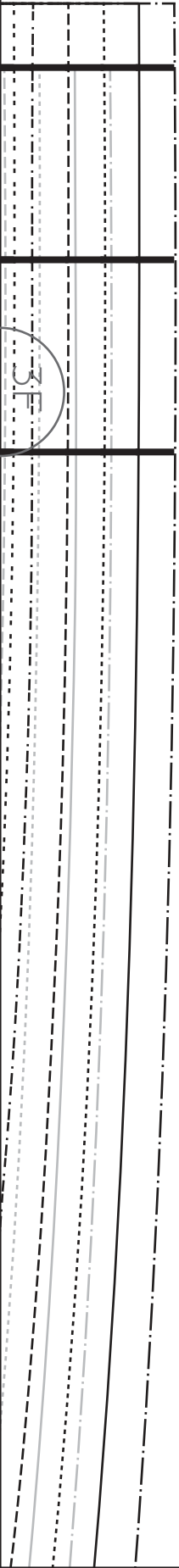
4F

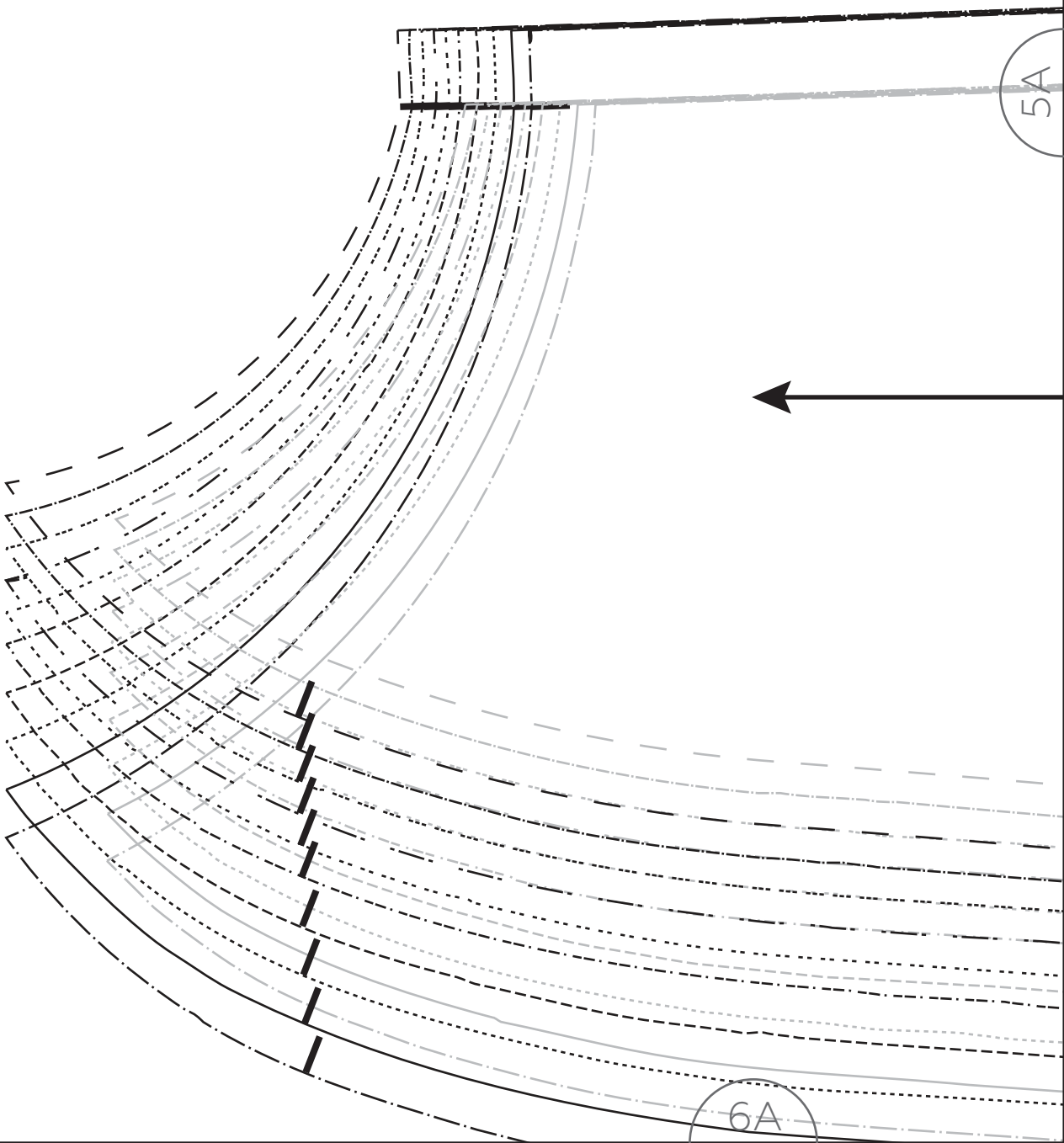
2F

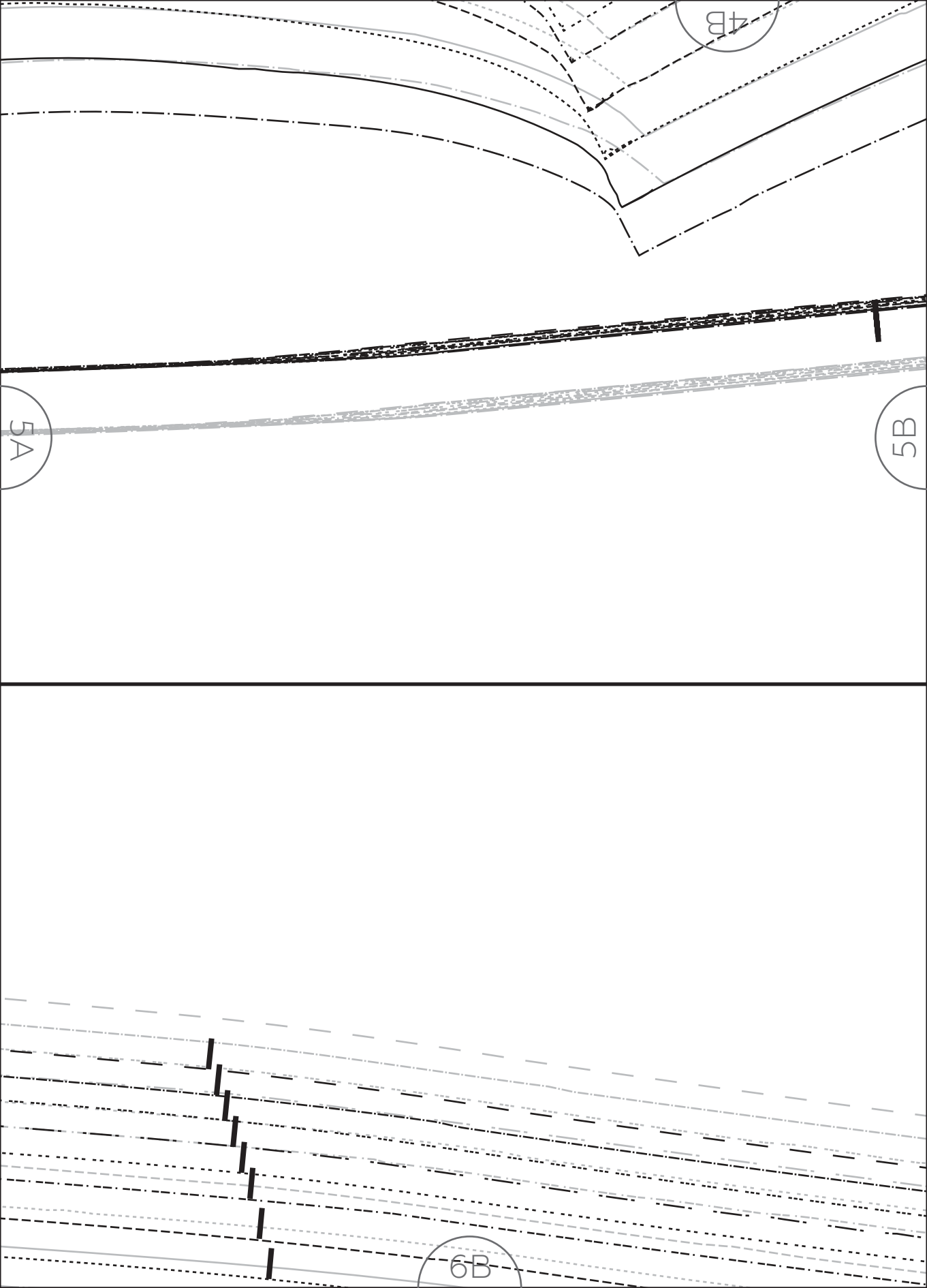
3F

3E

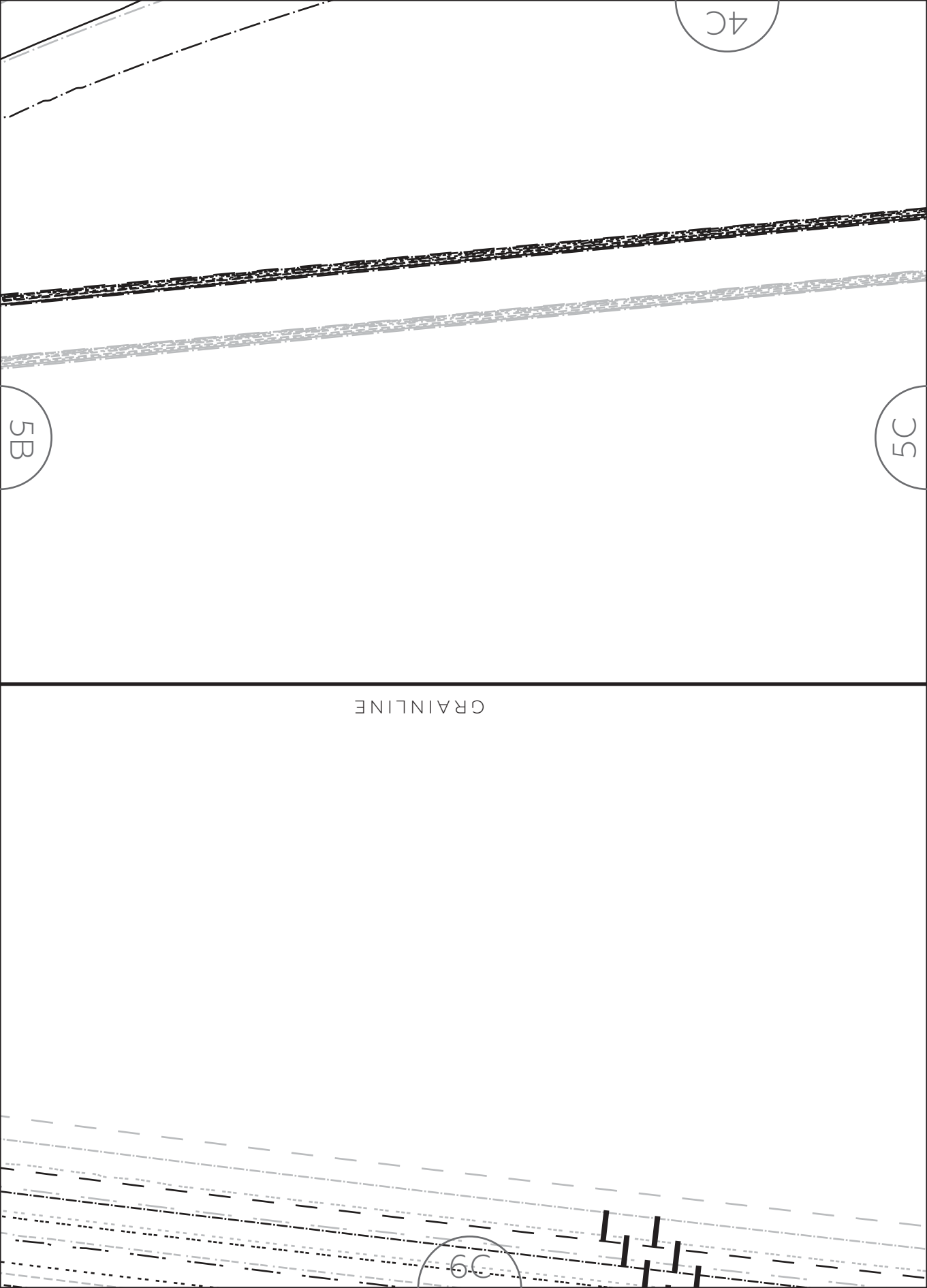
3E











LENGTHEN / SHORTEN LINE

IN THE  
FOLDS

in collaboration with

*Peppermint*  
MAGAZINE

BUTTON-UP DRESS

SIDE BACK PANEL

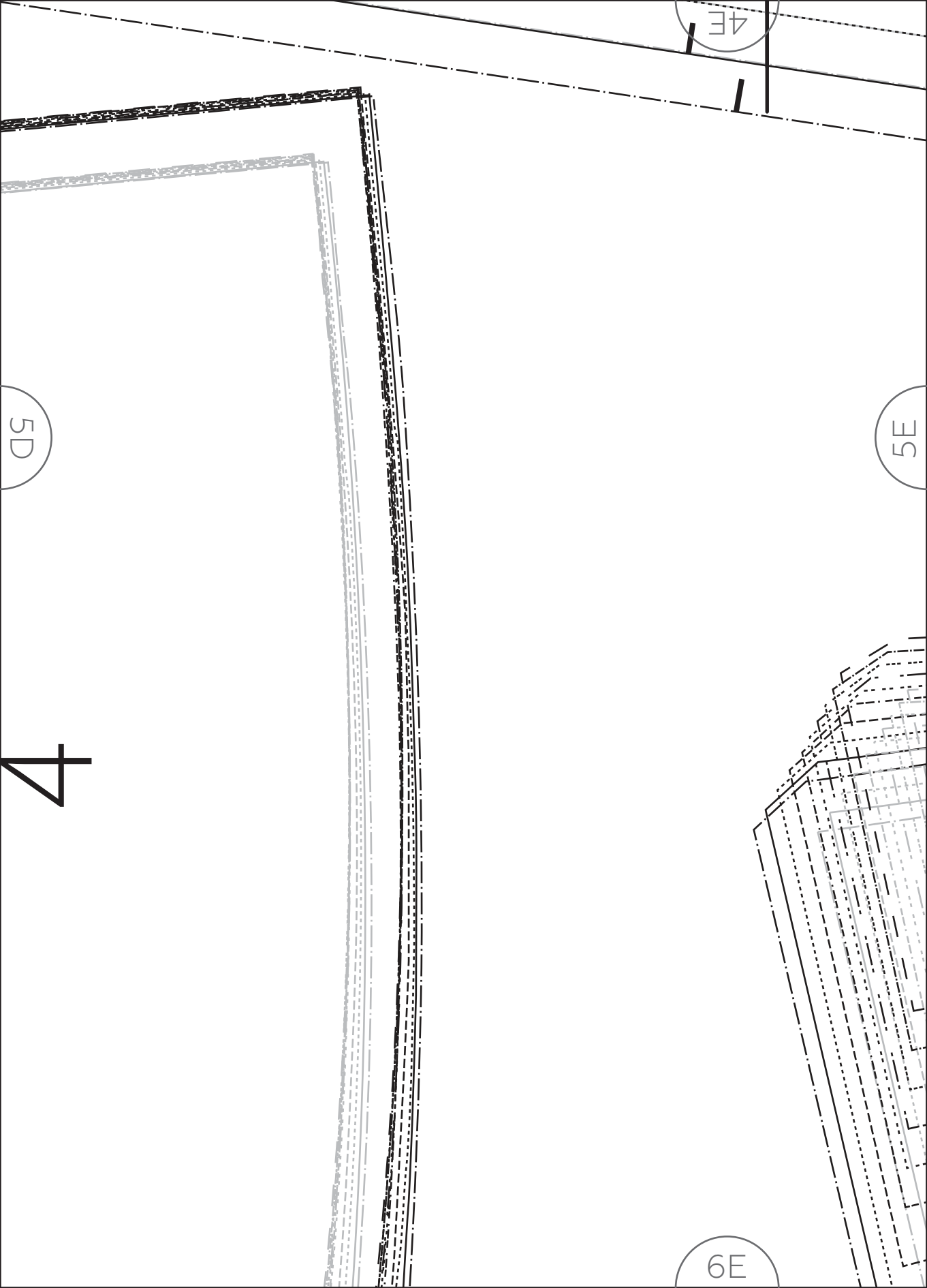
CUT 1 PAIR

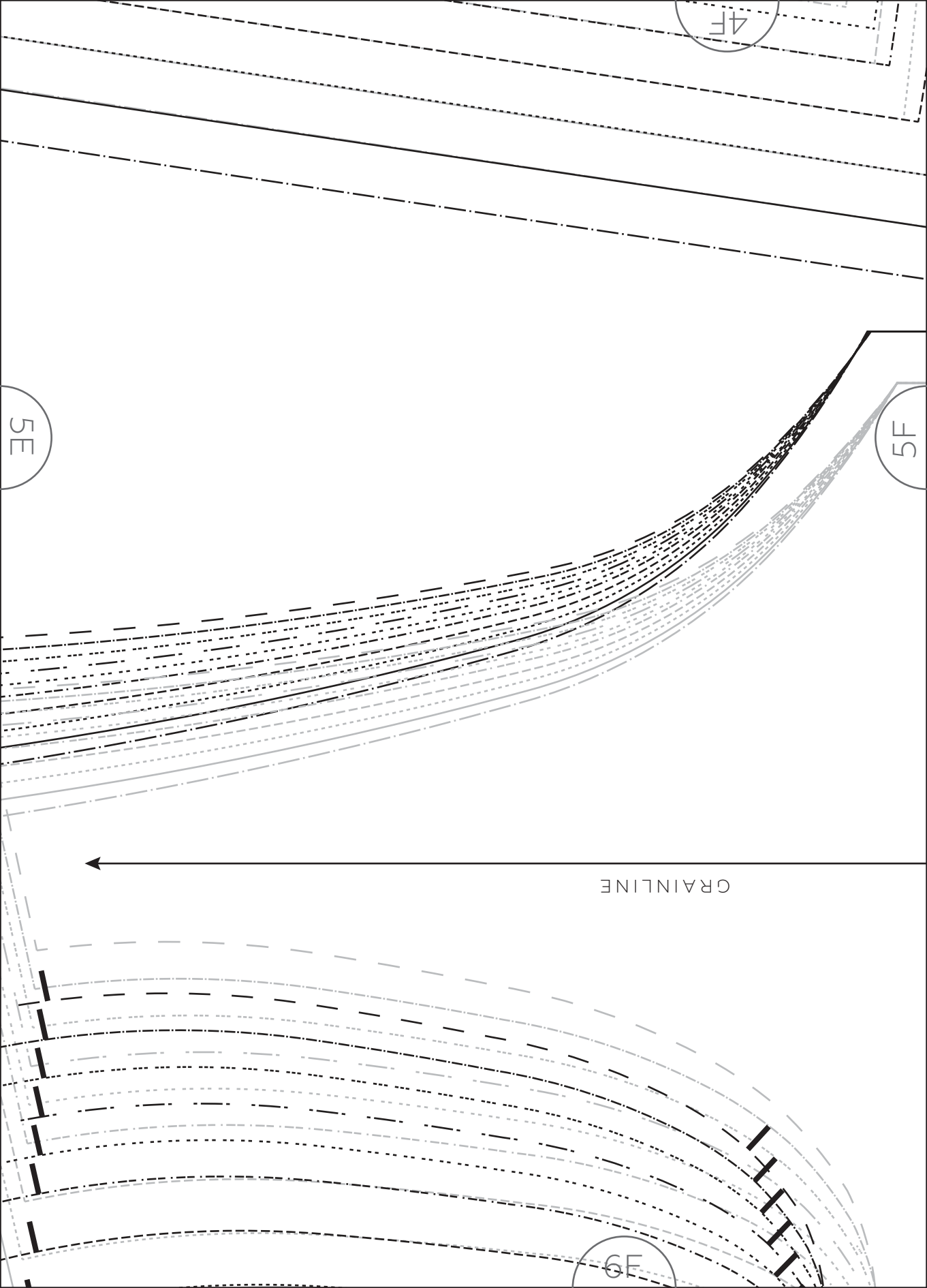
6D

4D

5D

5D





THE  
OLDS

collaboration with

*permint*  
MAGAZINE

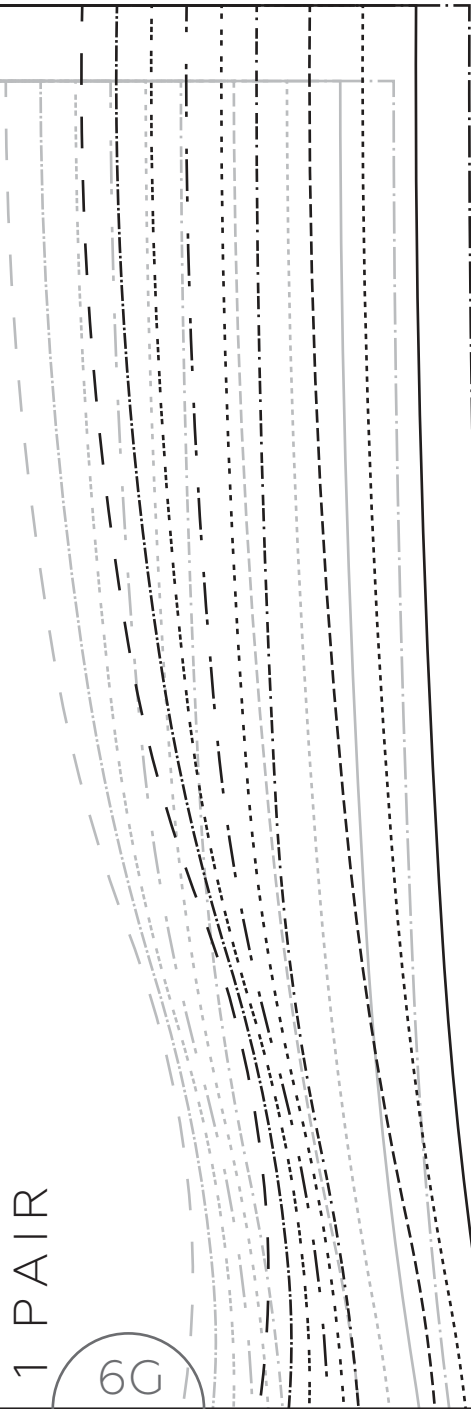
5

TTTON-UP DRESS

NT FACING

1 PAIR

6C



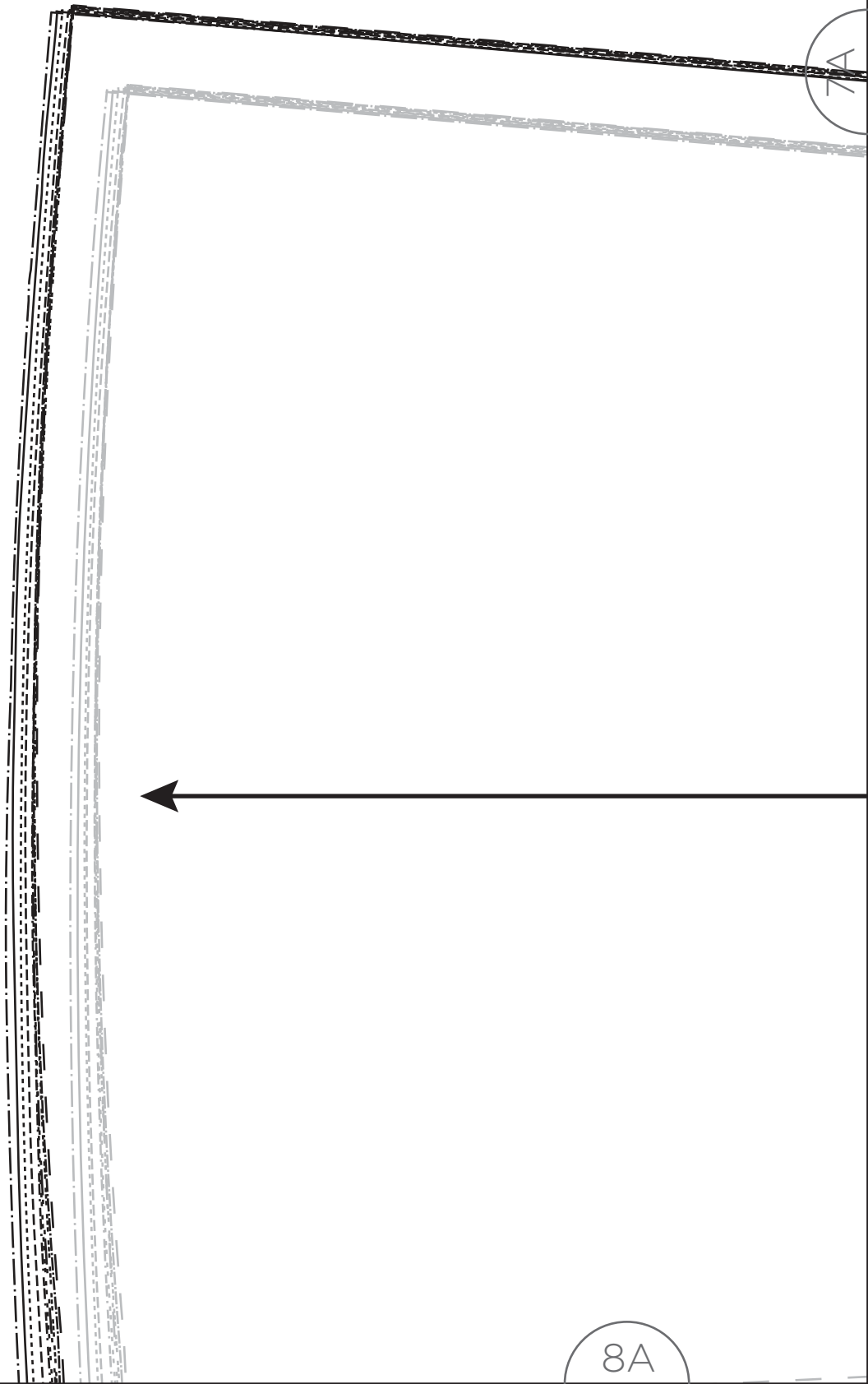
5F

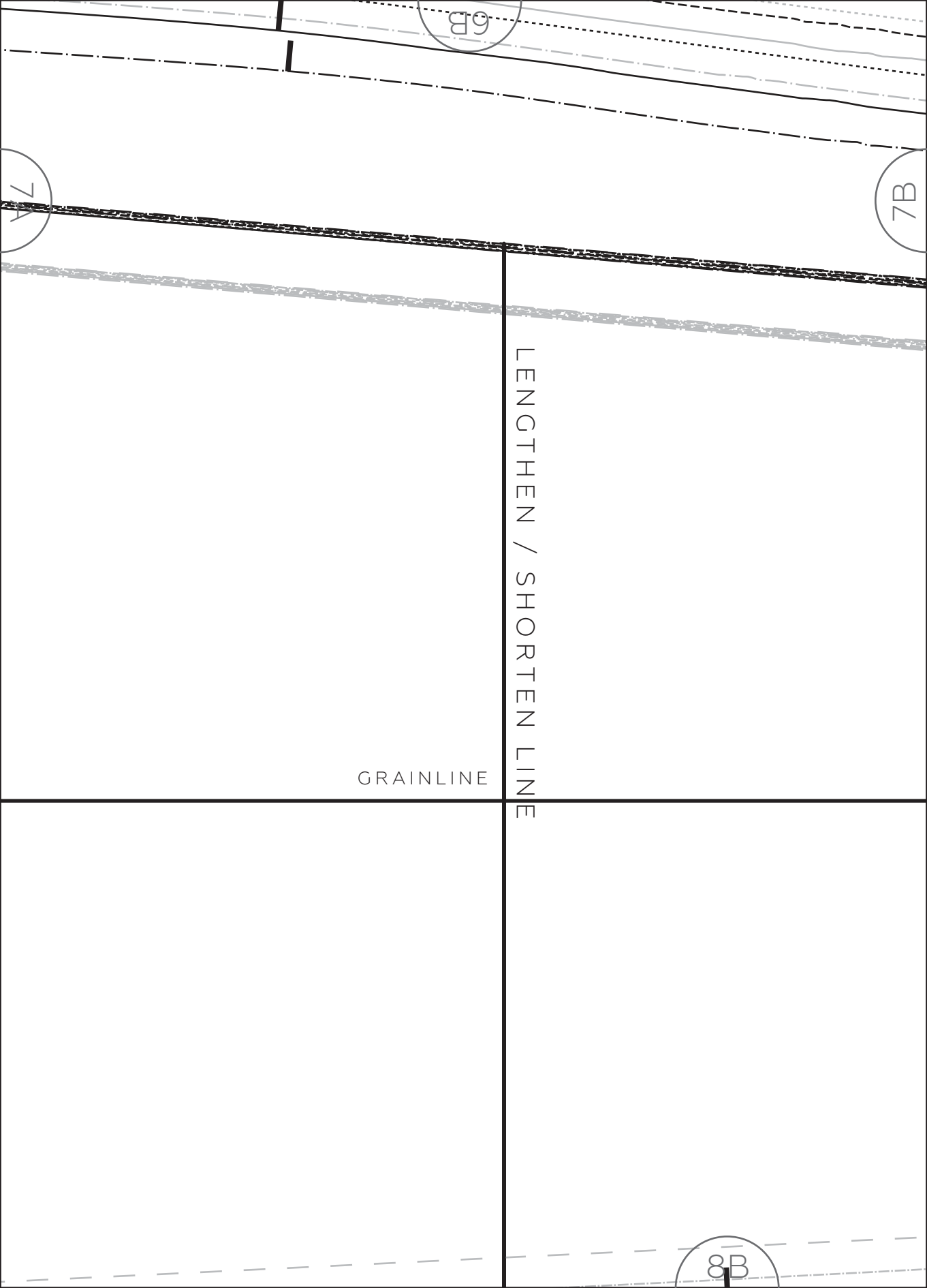
4C

6A

7A

8A





6B

7B

LENGTHEN / SHORTEN LINE

GRAINLINE

8B

7A

39

7C



# IN THE FOLDS

in collaboration with

*Peppermint*  
MAGAZINE

BUTTON-UP DRESS

SIDE FRONT PANEL

CUT 1 PAIR

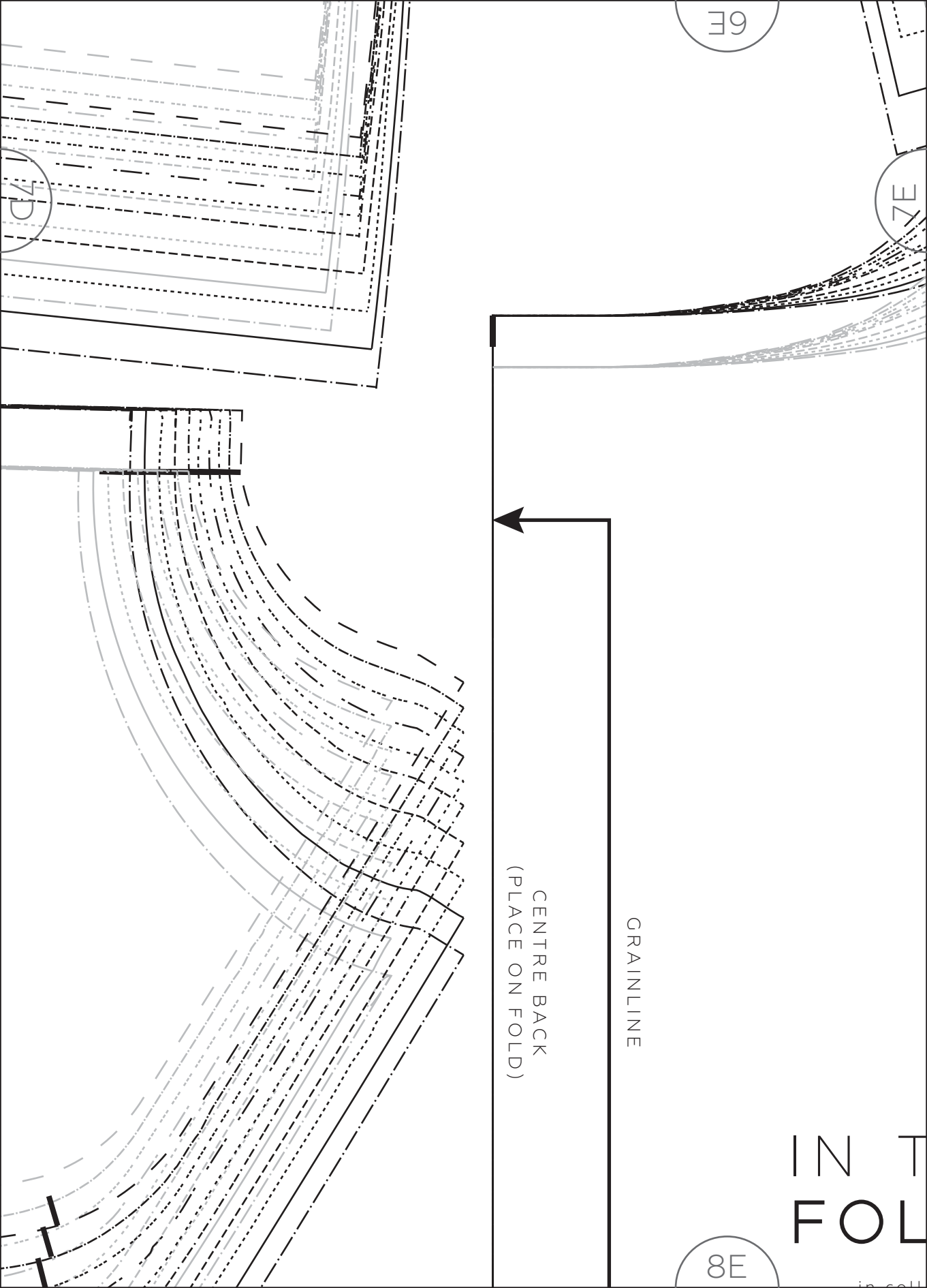
2

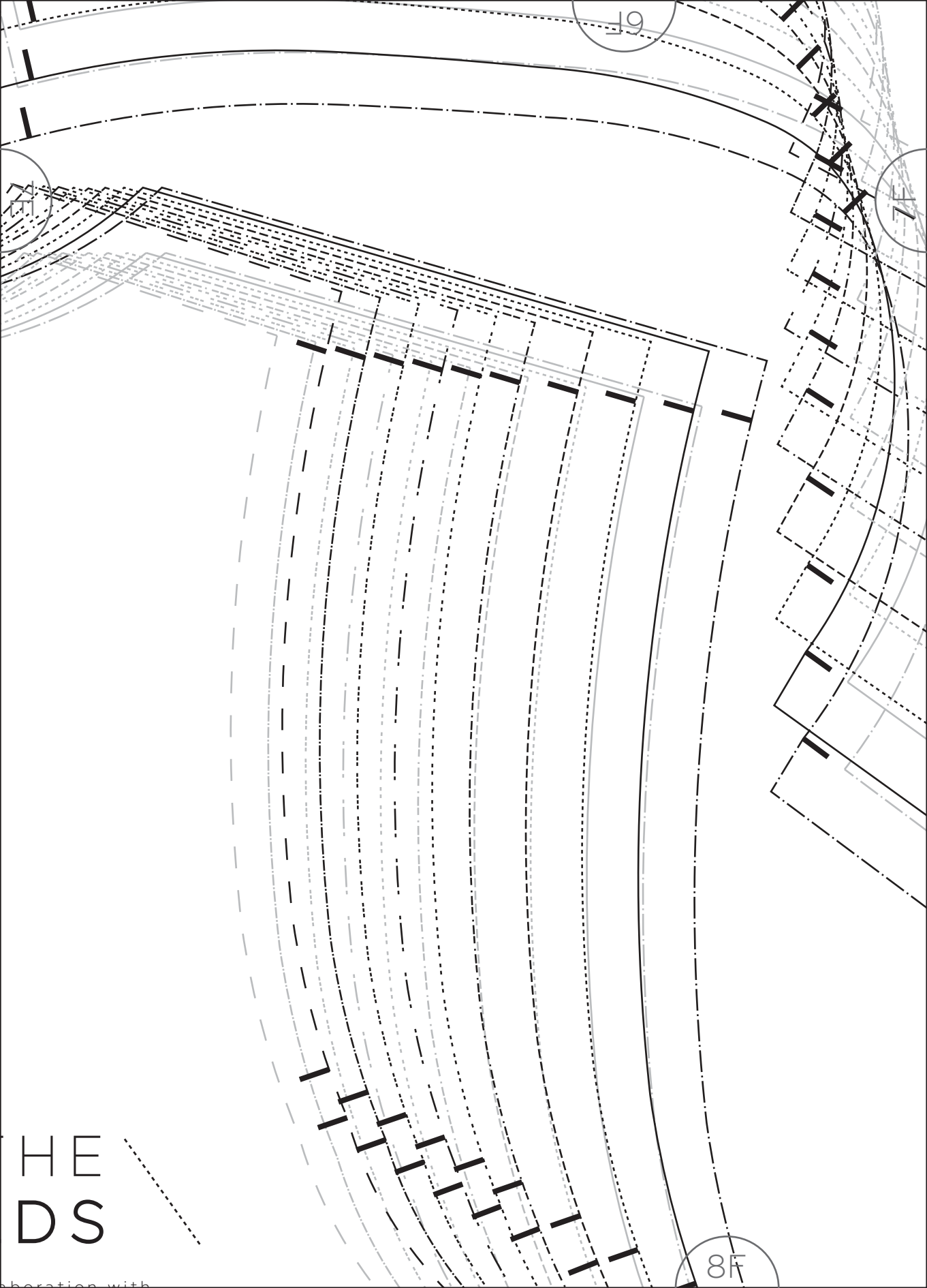
# IN THE FOLD

8E

GRAINLINE

CENTRE BACK  
(PLACE ON FOLD)





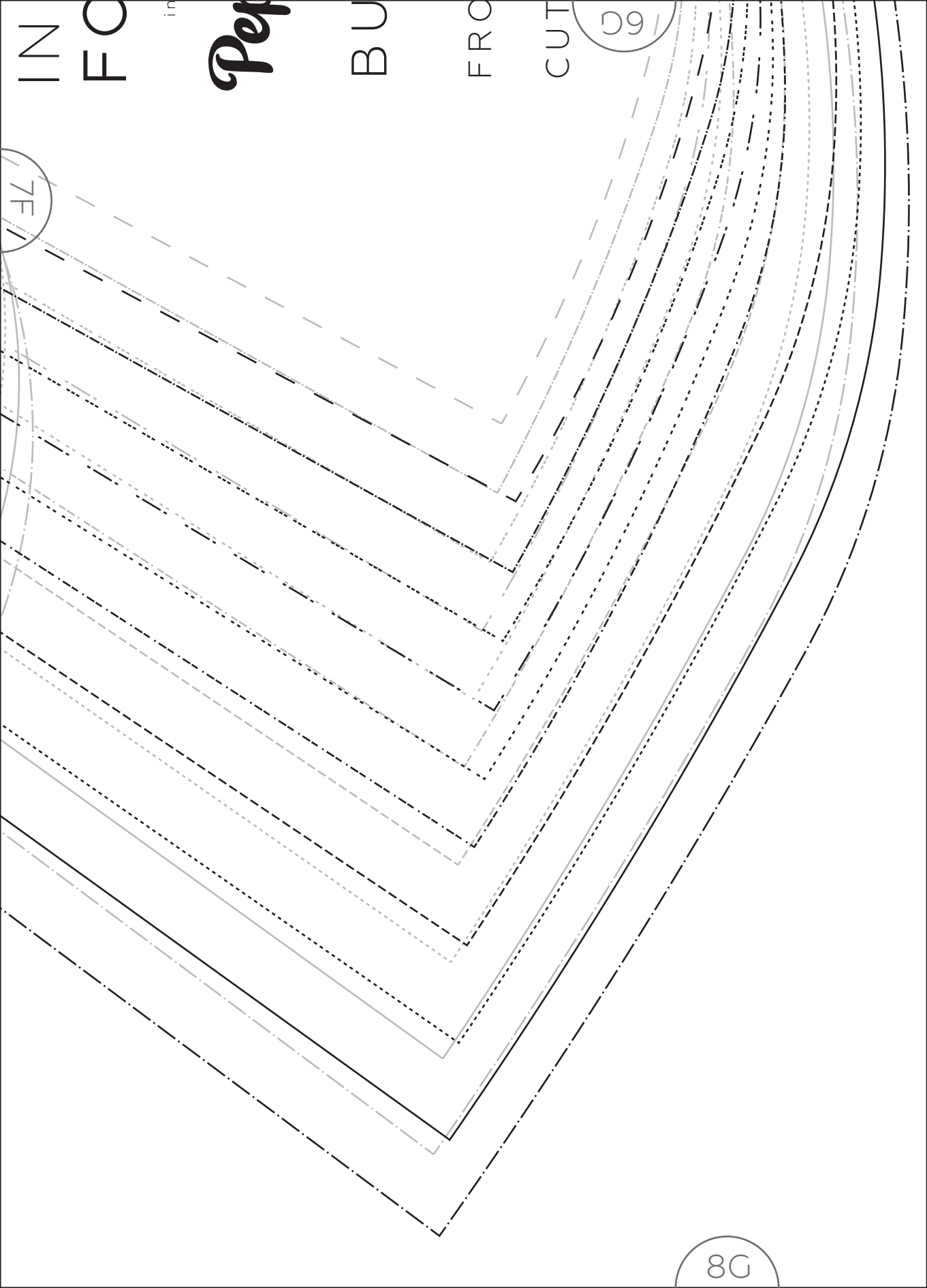
19

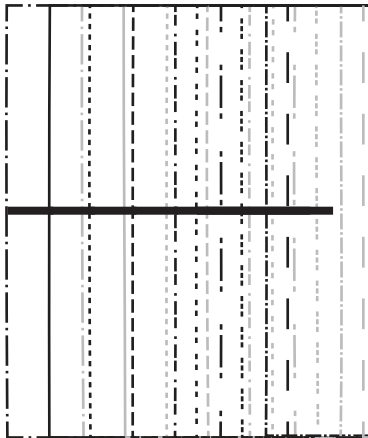
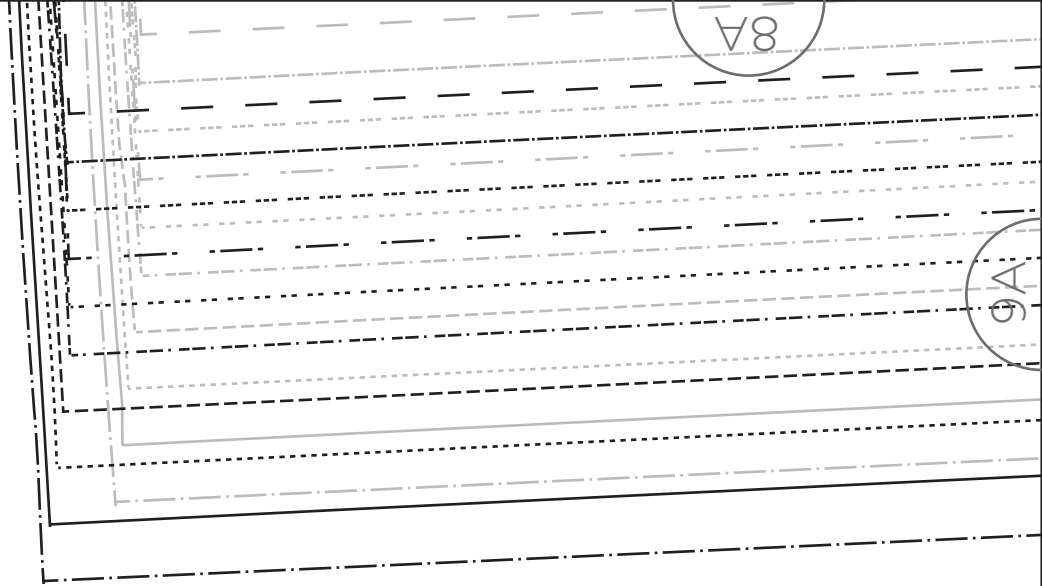
19

8F

HEADS

operation with





# IN THE FOLDS

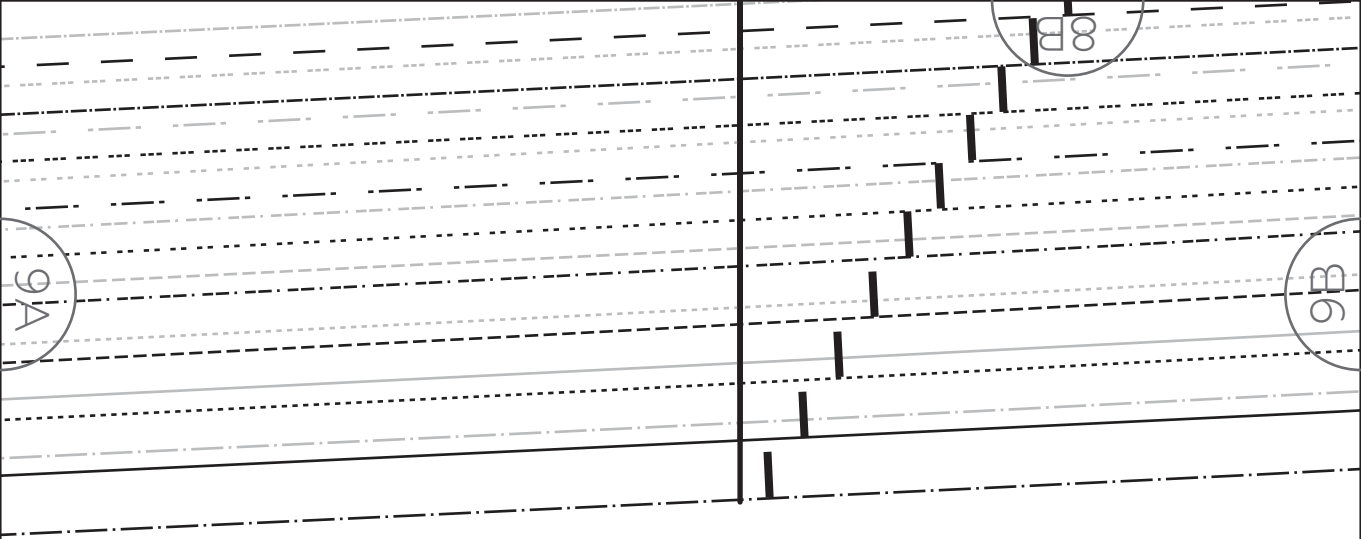
in collaboration with

**Peppermint**  
MAGAZINE

## BUTTON

## PLACKET FU

## CUT 1 PAIR



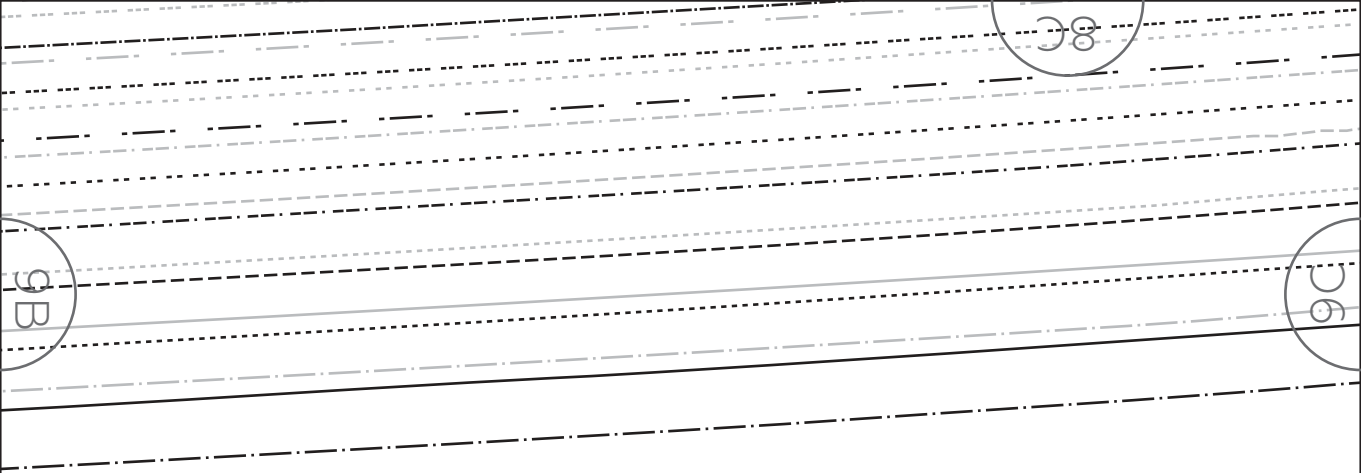
W - UP DRESS

USING

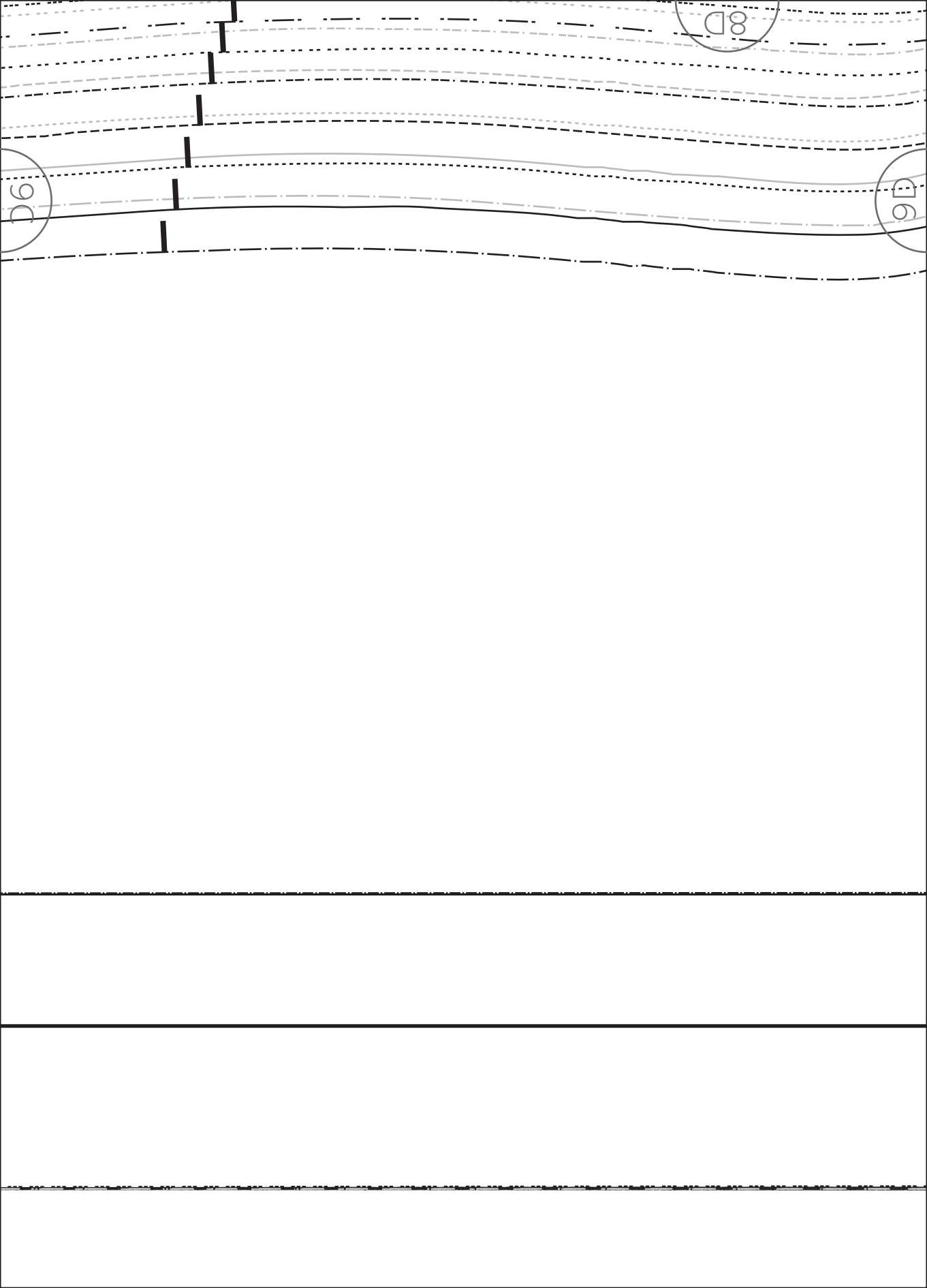
FUSING (OPTIONAL)



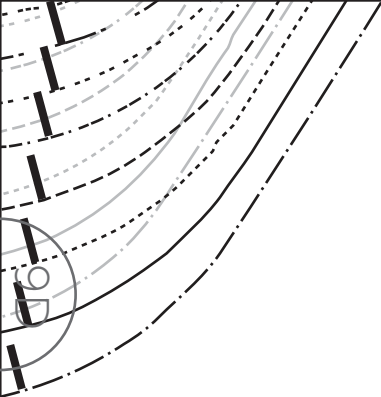
LENGTHEN /  
SHORTEN LINE



GRAINLINE







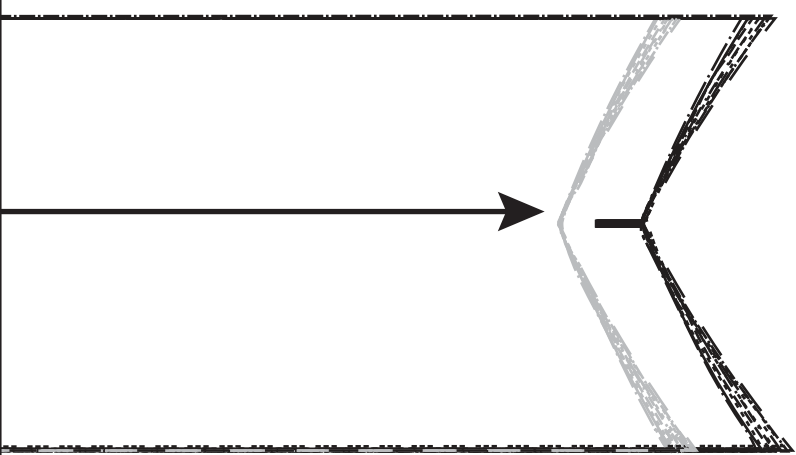
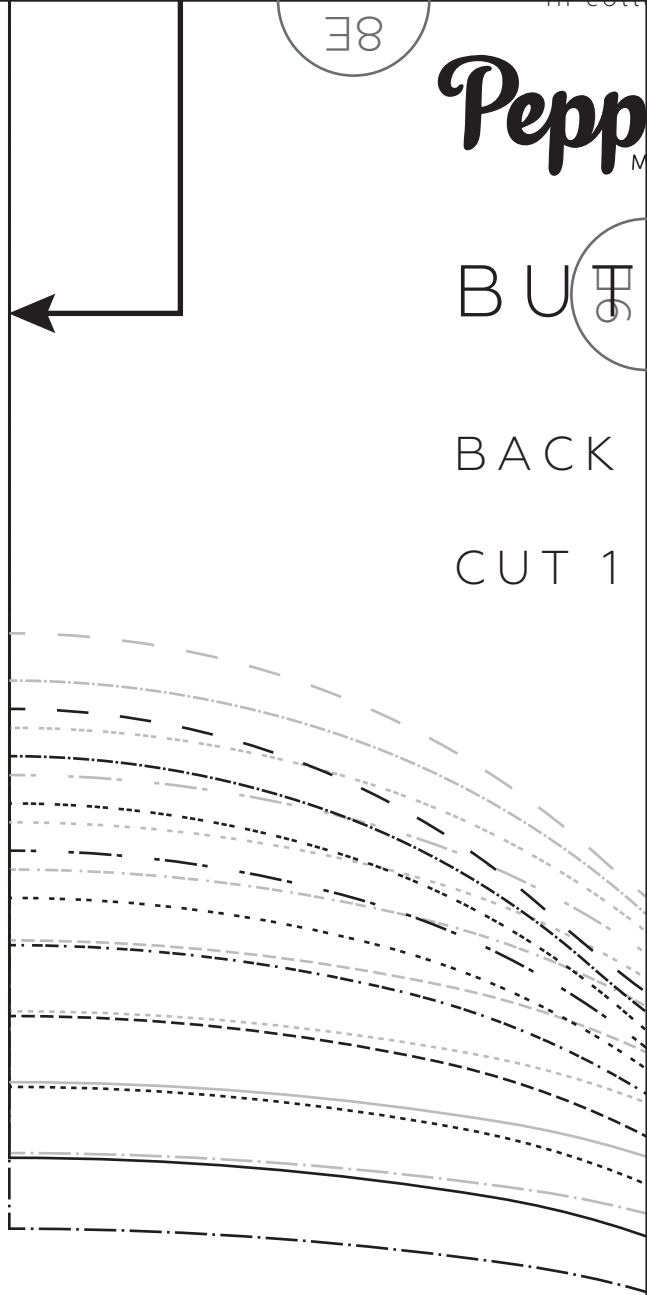
8E

Pepp

BU

BACK

CUT 1



TON-UP DRESS

FACING

ON FOLD

6

