



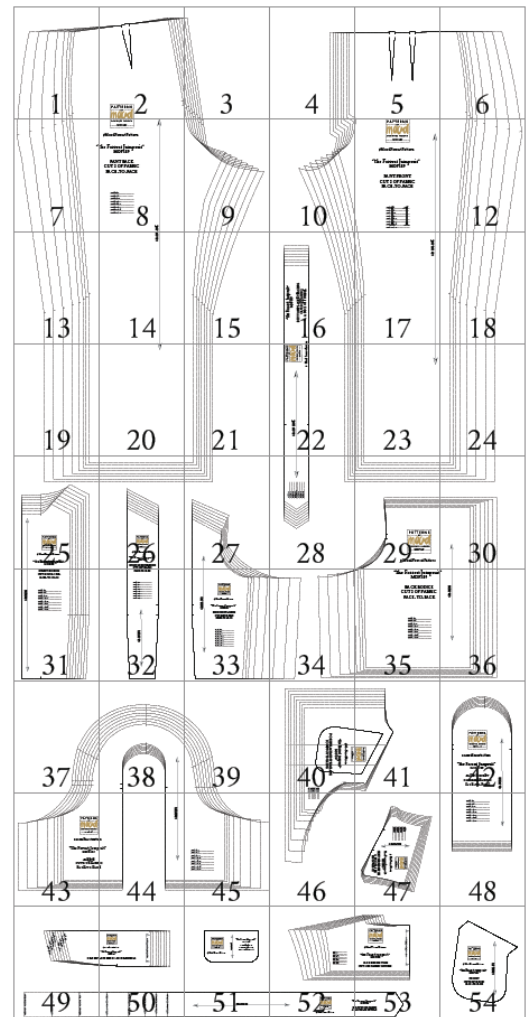
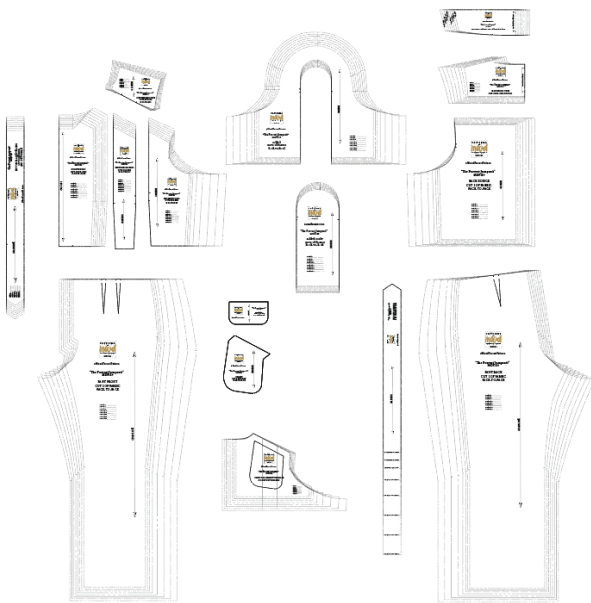
#MoodForrestPattern

“The Forrest Jumpsuit”

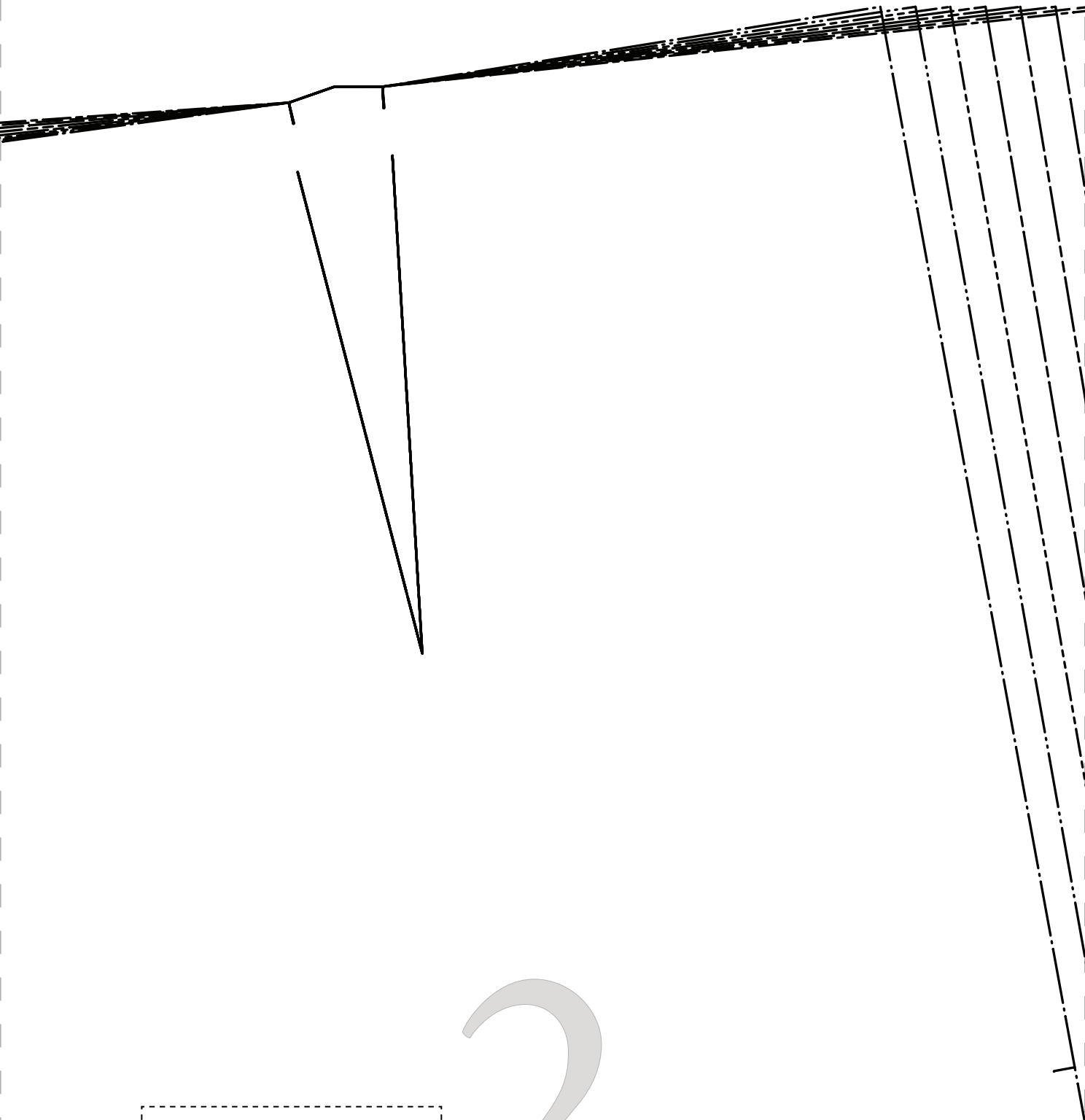
Sizes 0/2 to 28/30

Stop!

Print just this page first to check accuracy.
The Mood square to the left should measure
2 inches. Print “actual size” (no scaling).

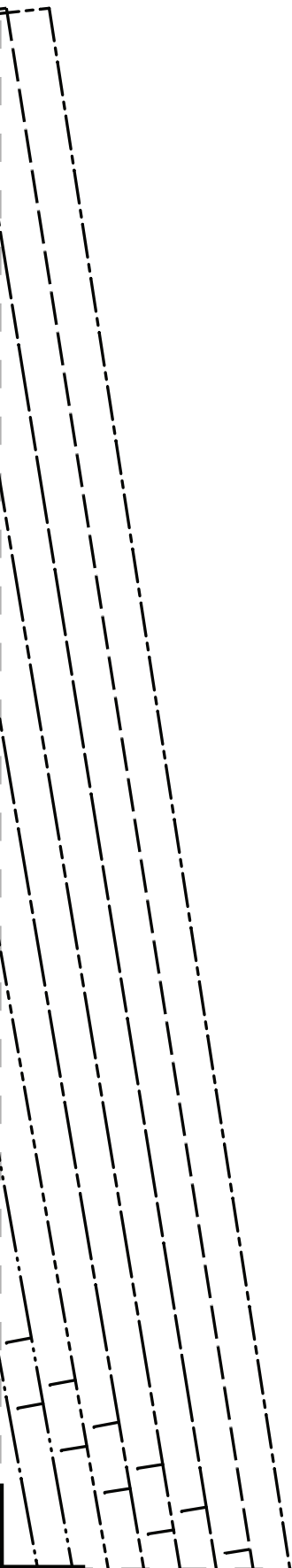


1

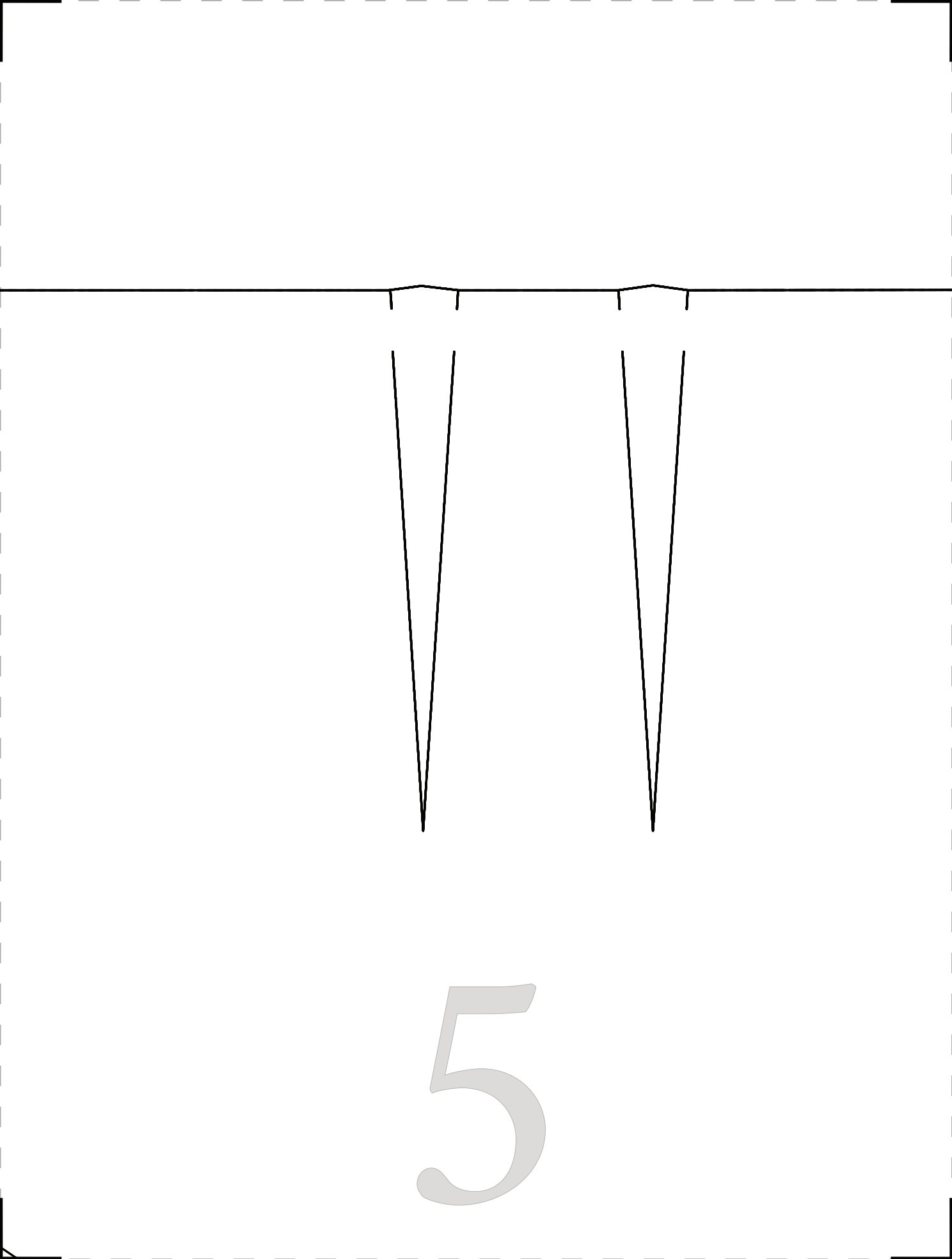


PATTERNS
BY
maud

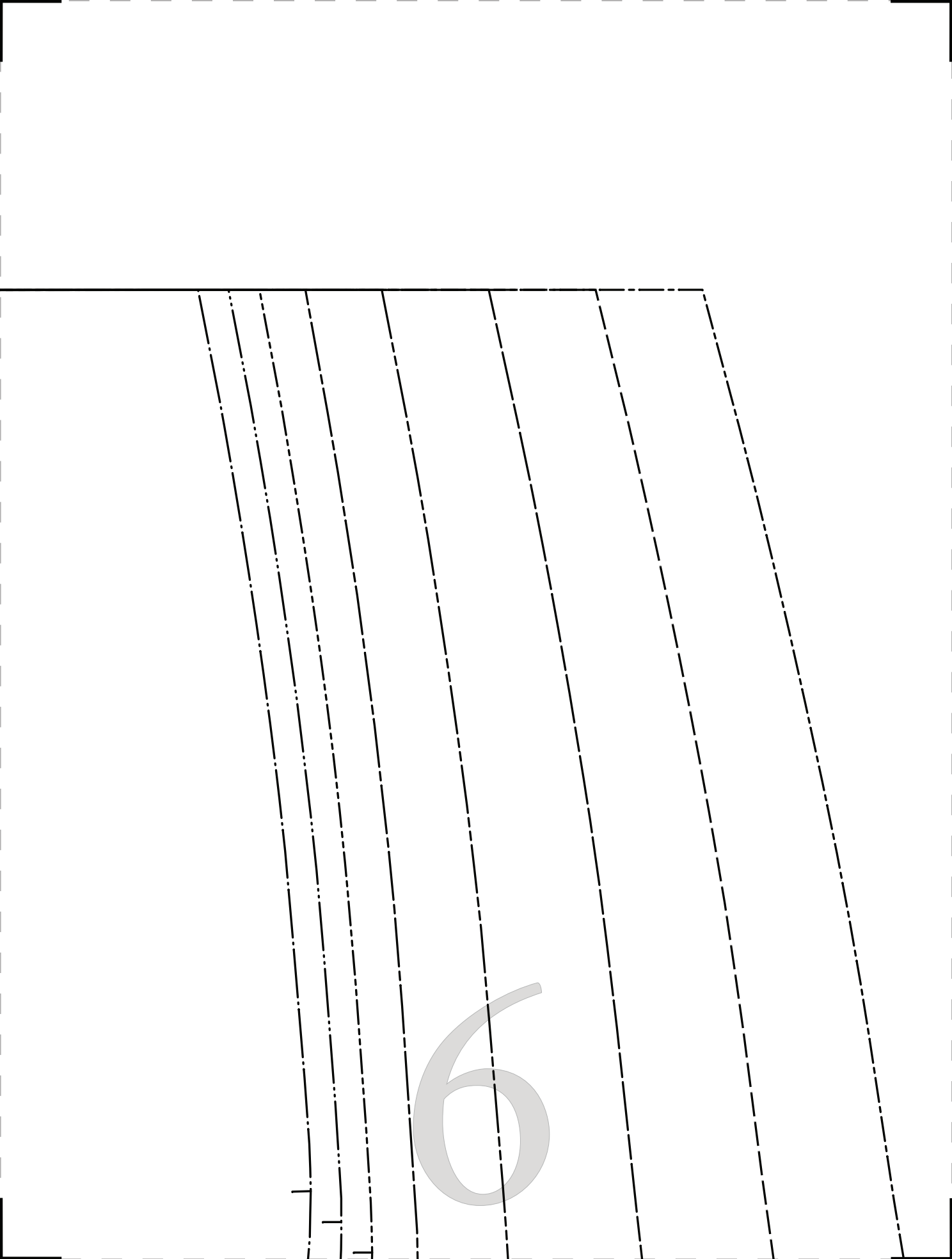
2



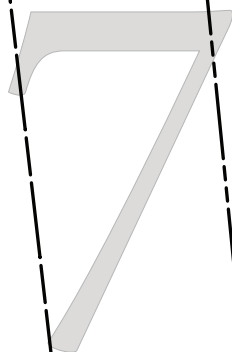
3



5



“



DESIGNER FABRICS

MDF189

#MoodForrestPattern

The Forrest Jumpsuit”

MDF189

PANT BACK
CUT 2 OF FABRIC
FACE-TO-FACE

SIZE 0/2

SIZE 4/6

SIZE 8/10

SIZE 12/14

SIZE 16/18

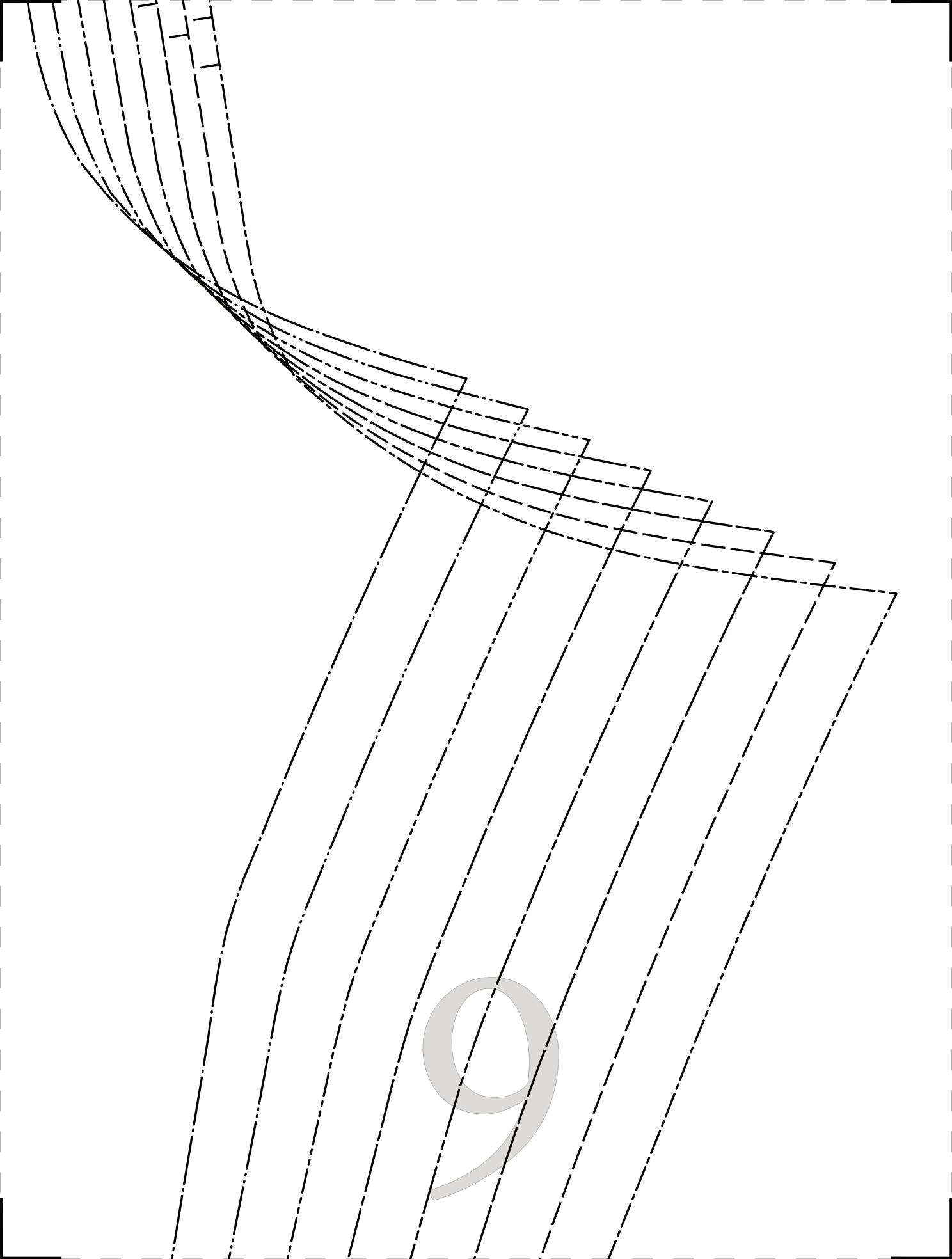
SIZE 20/22

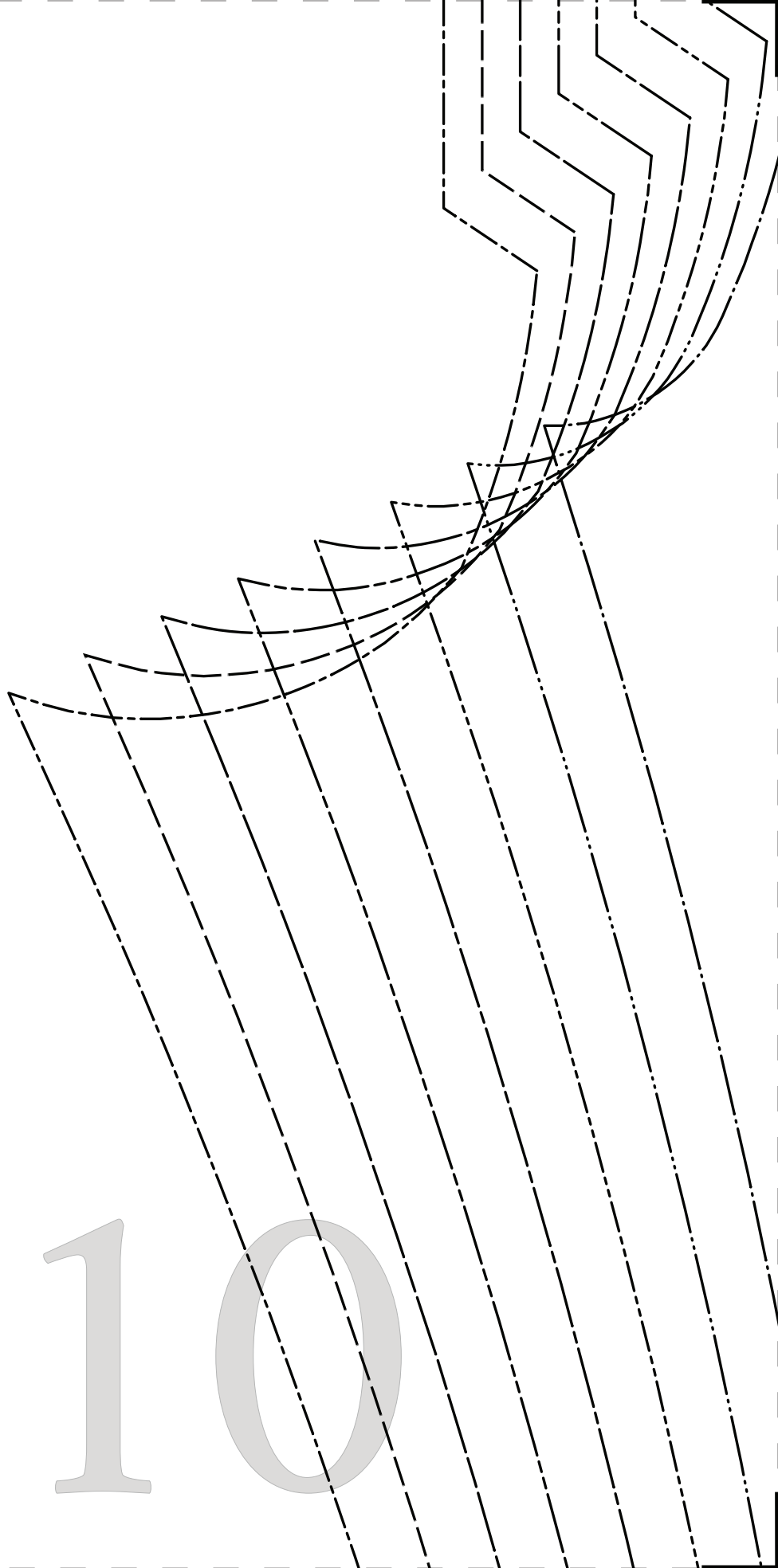
SIZE 24/26

SIZE 28/30

8

INE





10



#MoodForrestPattern

“The Forrest Jumpsuit” MDF189

PANT FRONT
CUT 2 OF FABRIC
FACE-TO-FACE

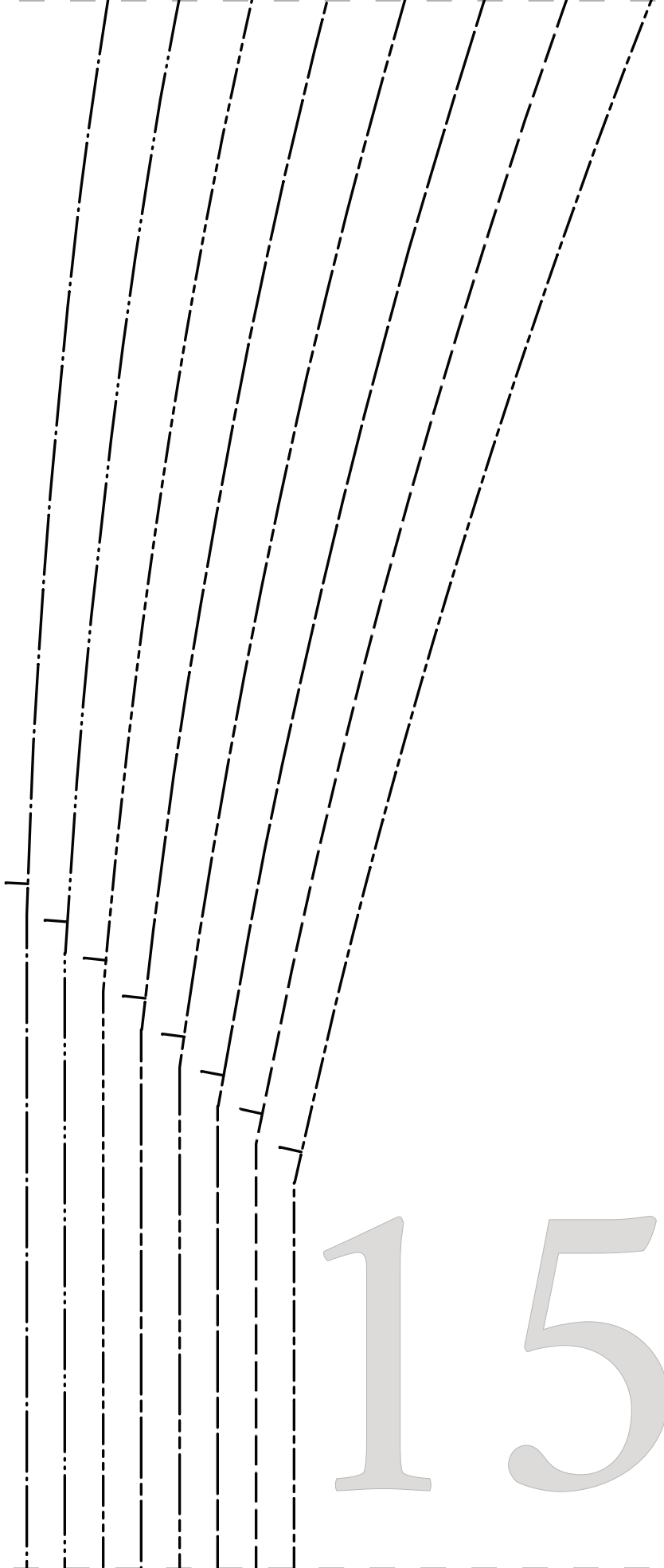
SIZE 0/2
SIZE 4/6
SIZE 8/10
SIZE 12/14
SIZE 16/18
SIZE 20/22
SIZE 24/26
SIZE 28/30

12

13

14

GRAINL



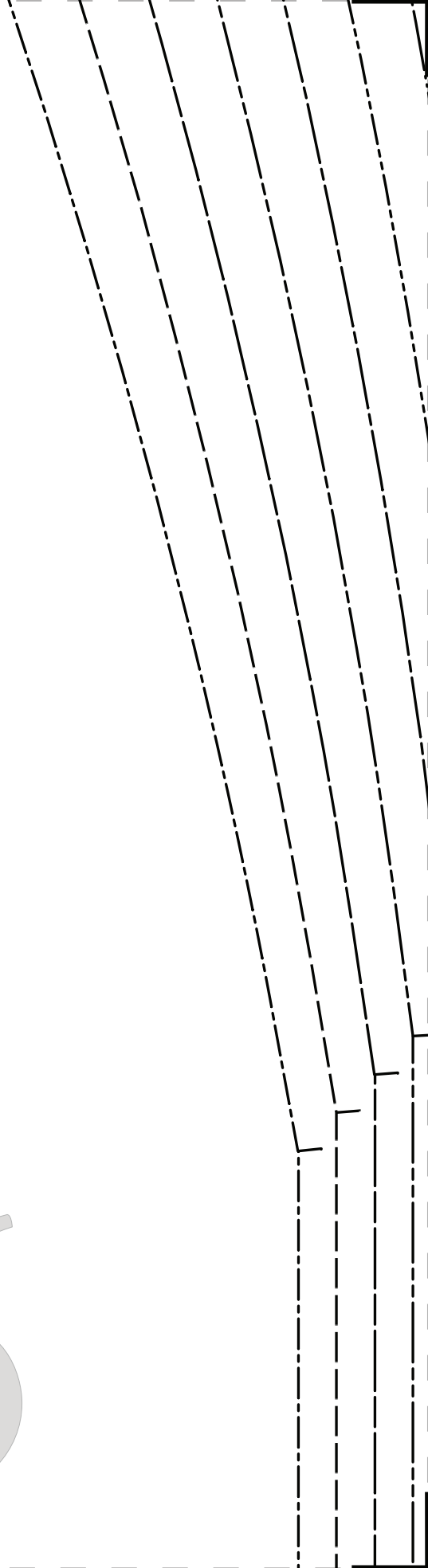
15

“The Forrest Jumpsuit”
MDF189

BUTTON PLACKET FACING
CUT 2 OF FABRIC
AND 2 OF FUSIBLE

1

6



17

18

19



20

21

P A T T E R N S

BY

mood

DESIGNER FABRICS

MDF189

GRAINLINE



#MoodForrestPattern

22



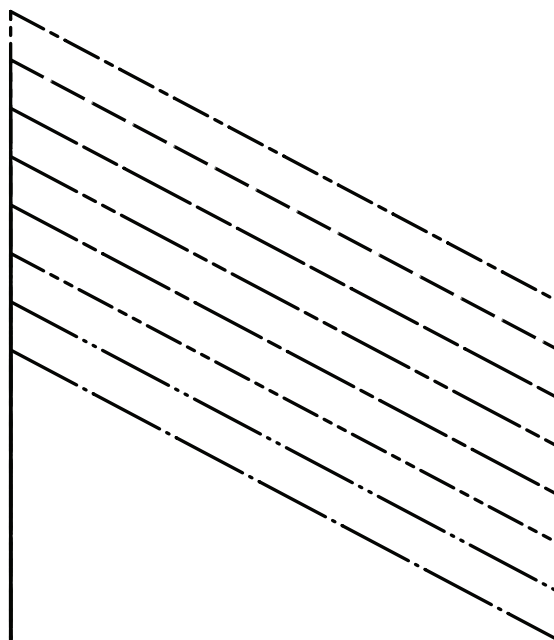
23

24



#MoodForrestPattern

“The Forrest Jumpsuit”
MDF189

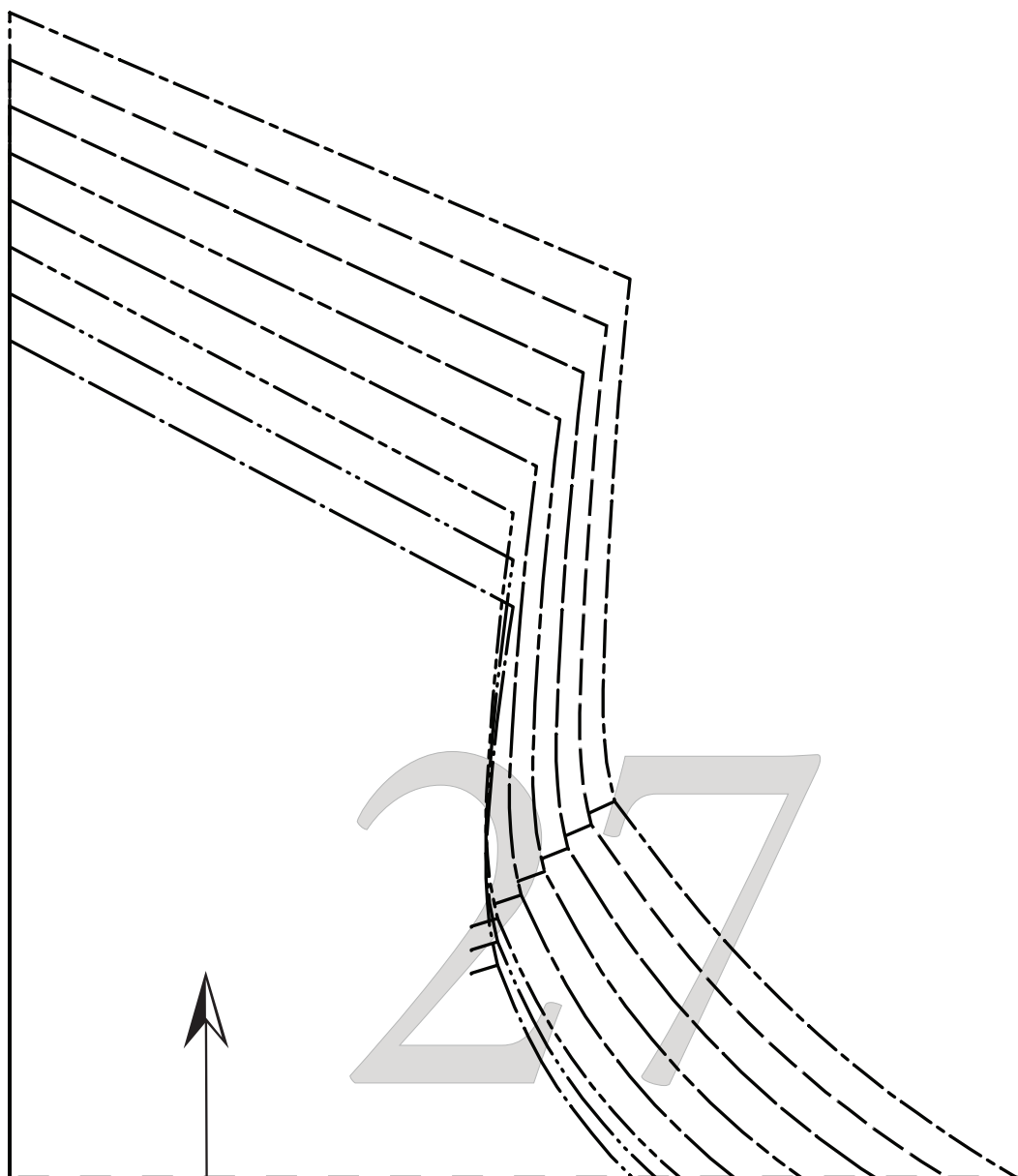
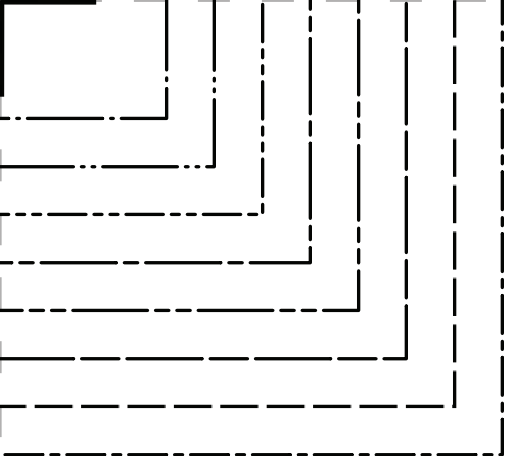


#MoodForrestPattern

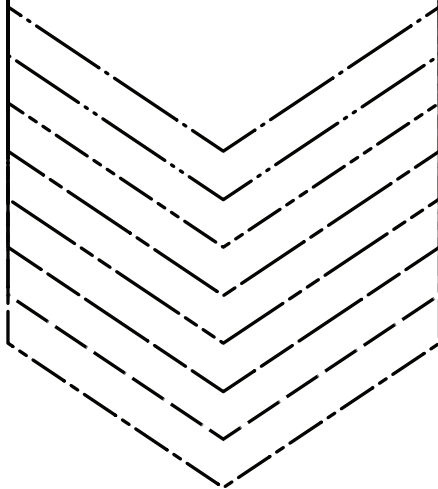
“The Forrest Jumpsuit”
MDF189

FRONT MIDDLE BODICE

CUT 2 OF FABRIC



SIZE 0/2
SIZE 4/6
SIZE 8/10
SIZE 12/14
SIZE 16/18
SIZE 20/22
SIZE 24/26
SIZE 28/30



28

PATTERNS

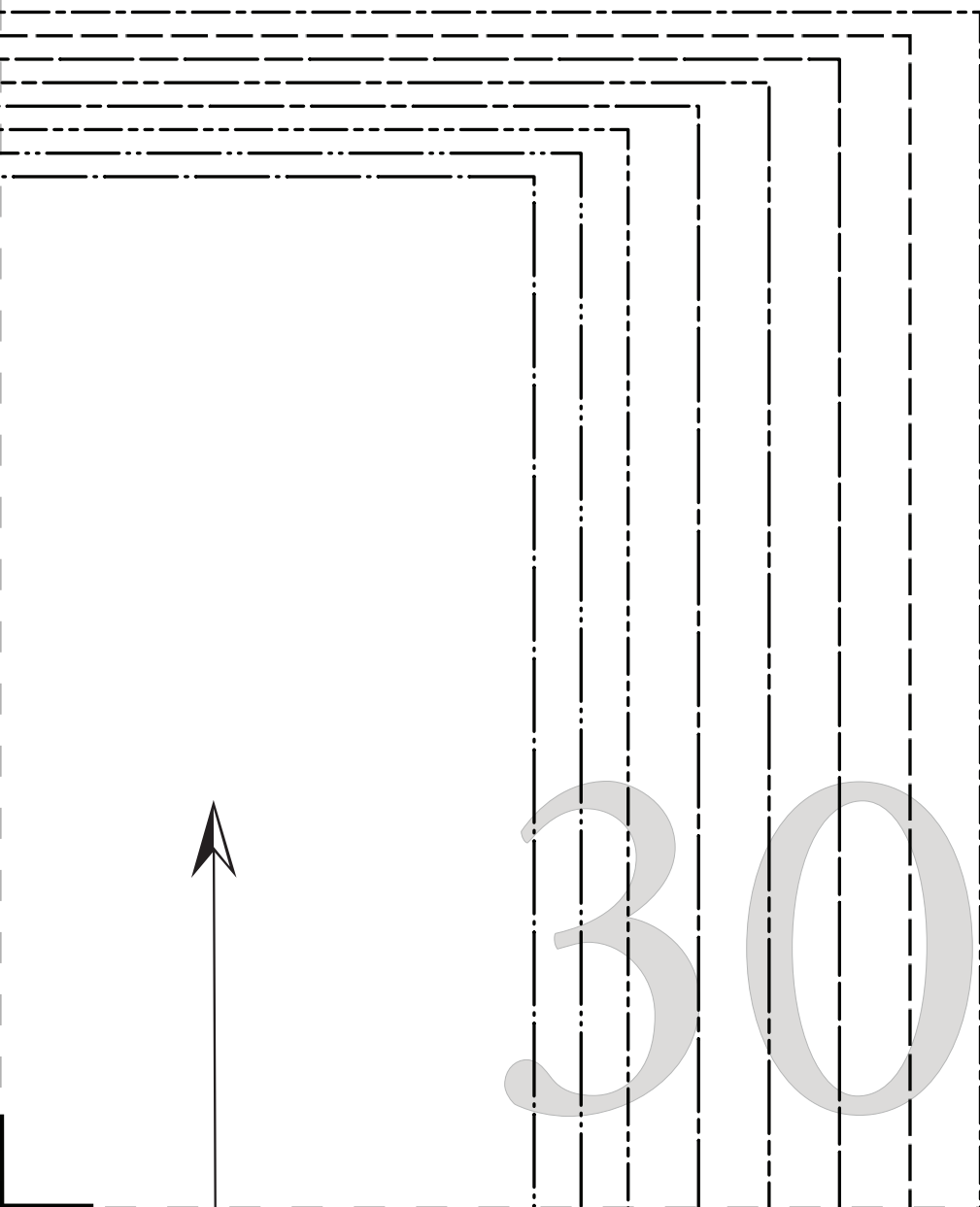
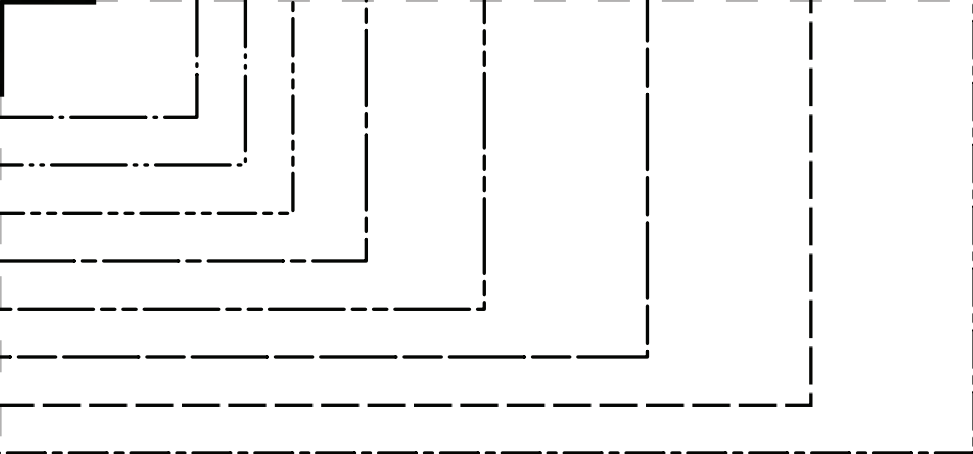
BY

mood

DESIGNER FABRICS

MDF189

#MoodForrestPattern



FRONT BODICE
CUT 2 OF FABRIC
FACE-TO-FACE

GRAINLINE

SIZE 0/2

SIZE 4/6

SIZE 8/10

SIZE 12/14

SIZE 16/18

SIZE 20/22

SIZE 24/26

SIZE 28/30

31

CUT 2 OF FABRIC
FACE-TO-FACE

SIZE 0/2

SIZE 4/6

SIZE 8/10

SIZE 12/14

SIZE 16/18

SIZE 20/22

SIZE 24/26

SIZE 28/30

GRAINLINE

32



#MoodForrestPattern

“The Forrest Jumpsuit”
MDF189

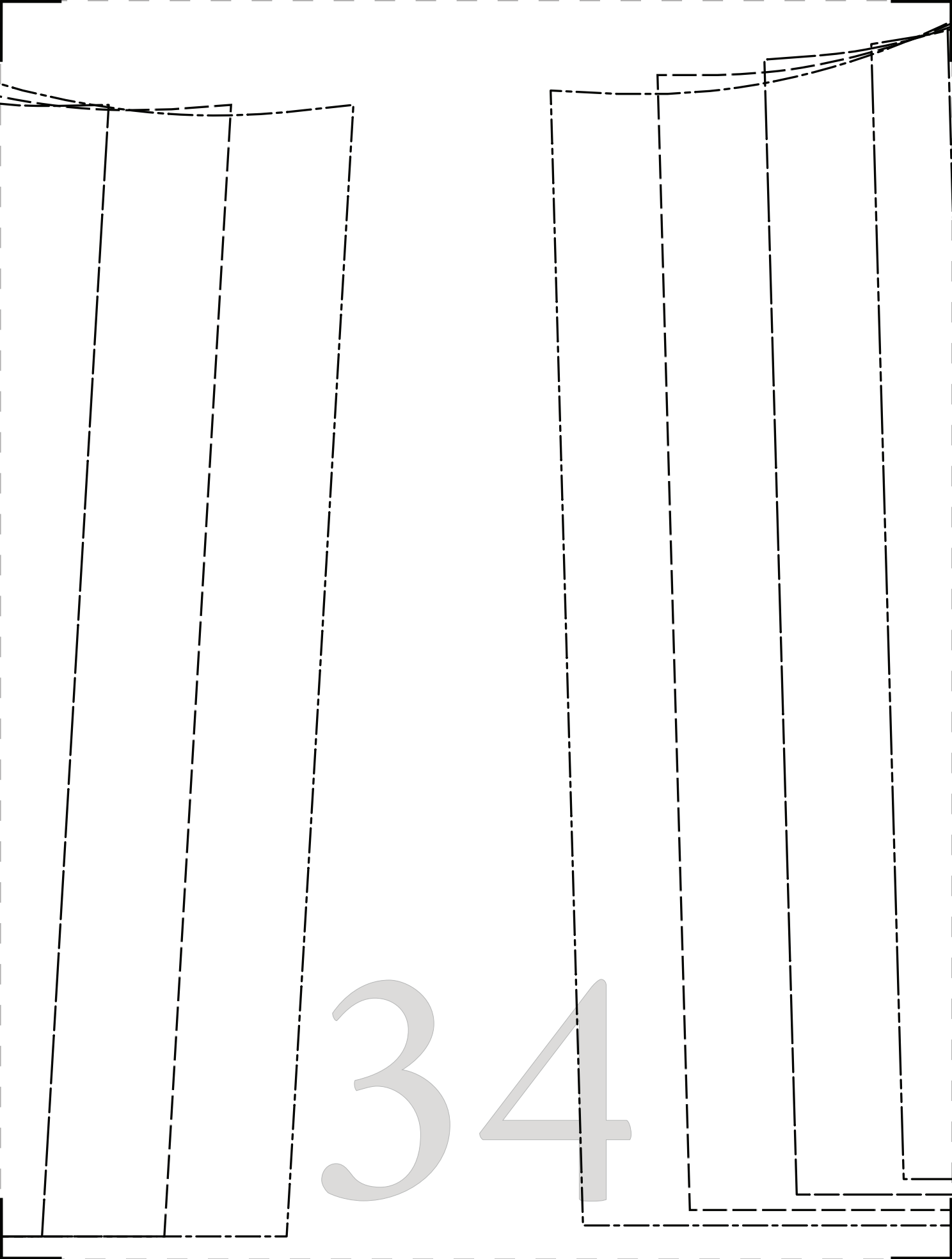
SIDE FRONT BODICE
CUT 2 OF FABRIC
FACE-TO-FACE

SIZE 0/2 _____
SIZE 4/6 _____
SIZE 8/10 _____
SIZE 12/14 _____
SIZE 16/18 _____
SIZE 20/22 _____
SIZE 24/26 _____
SIZE 28/30 _____

GRAINLINE



33



"The Forrest Jumpsuit"

MDF189

BACK BODICE
CUT 2 OF FABRIC
FACE-TO-FACE

SIZE 0/2

SIZE 4/6

SIZE 8/10

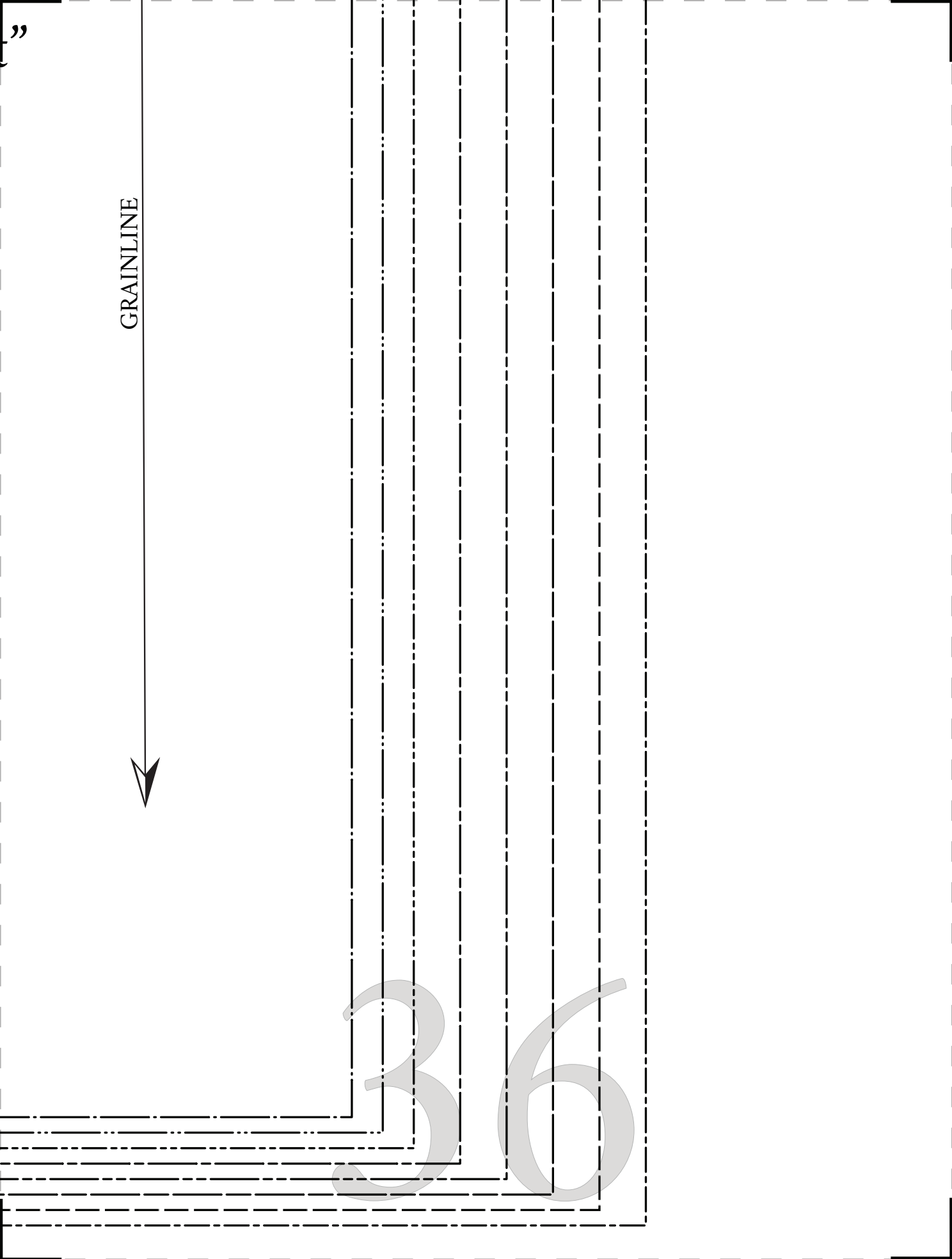
SIZE 12/14

SIZE 16/18

SIZE 20/22

SIZE 24/26

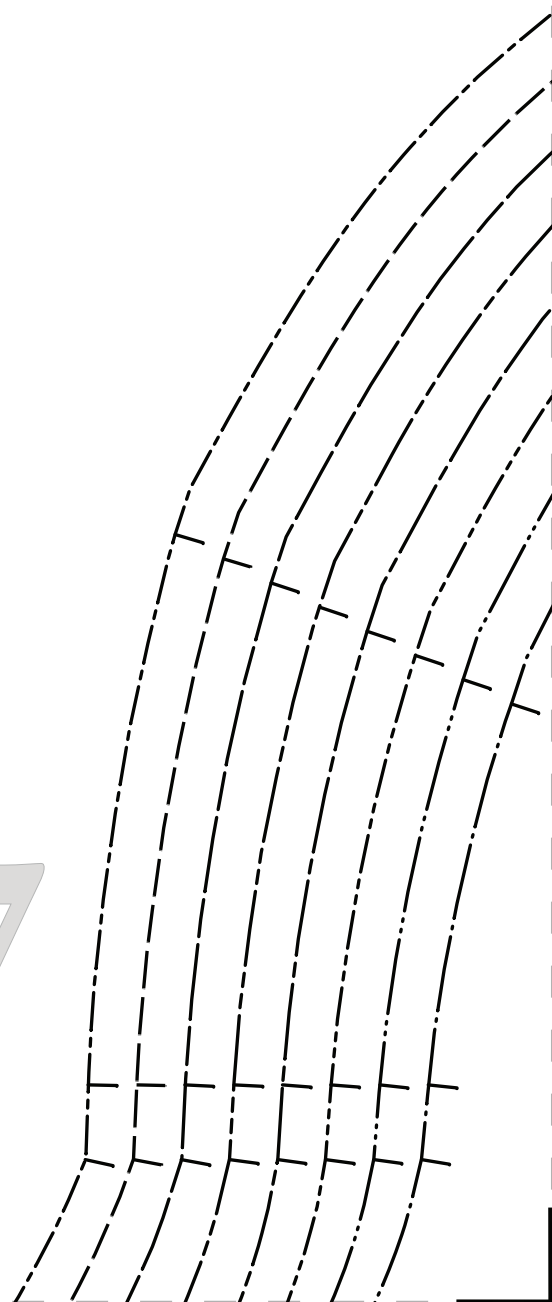
SIZE 28/30

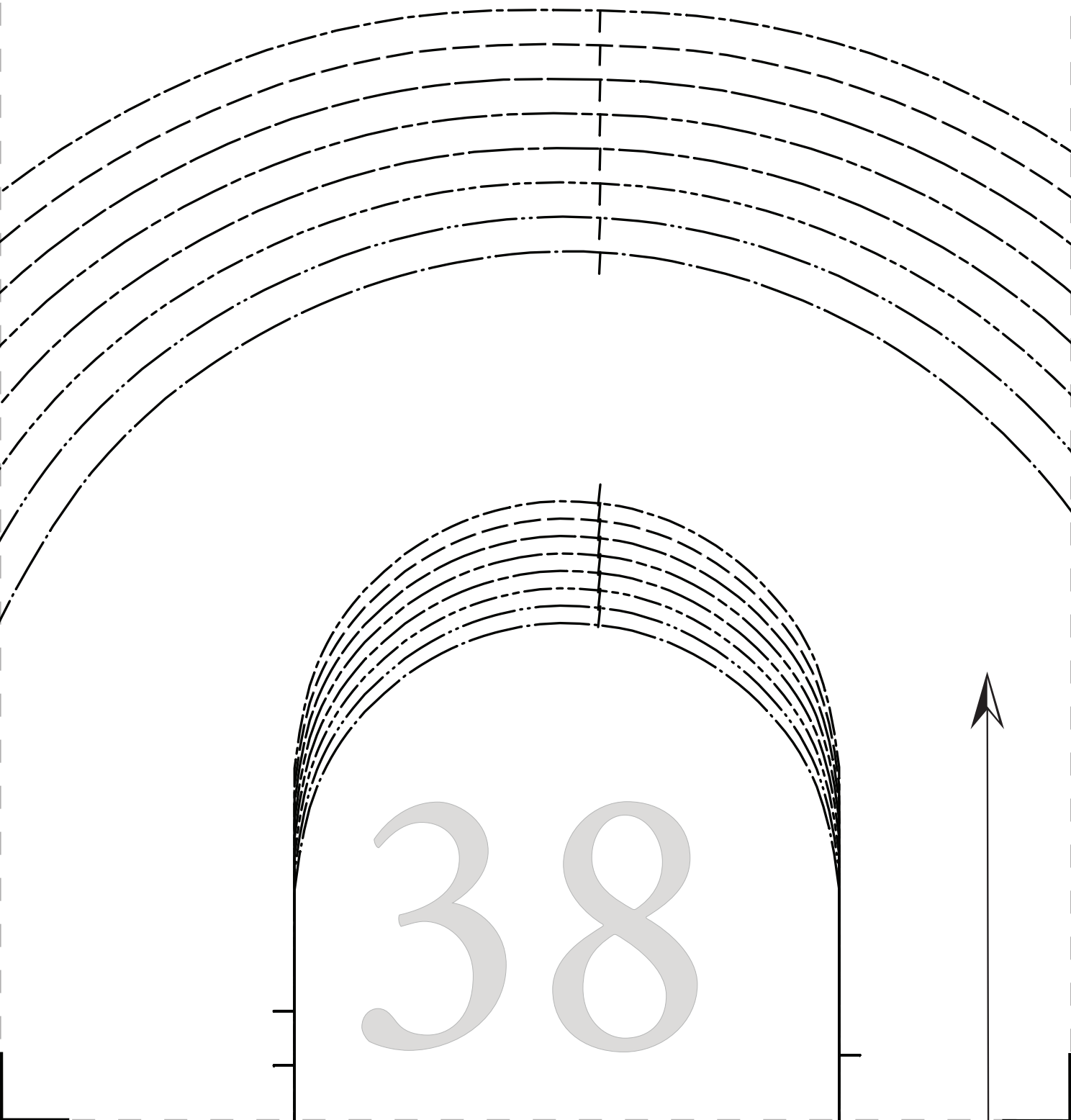


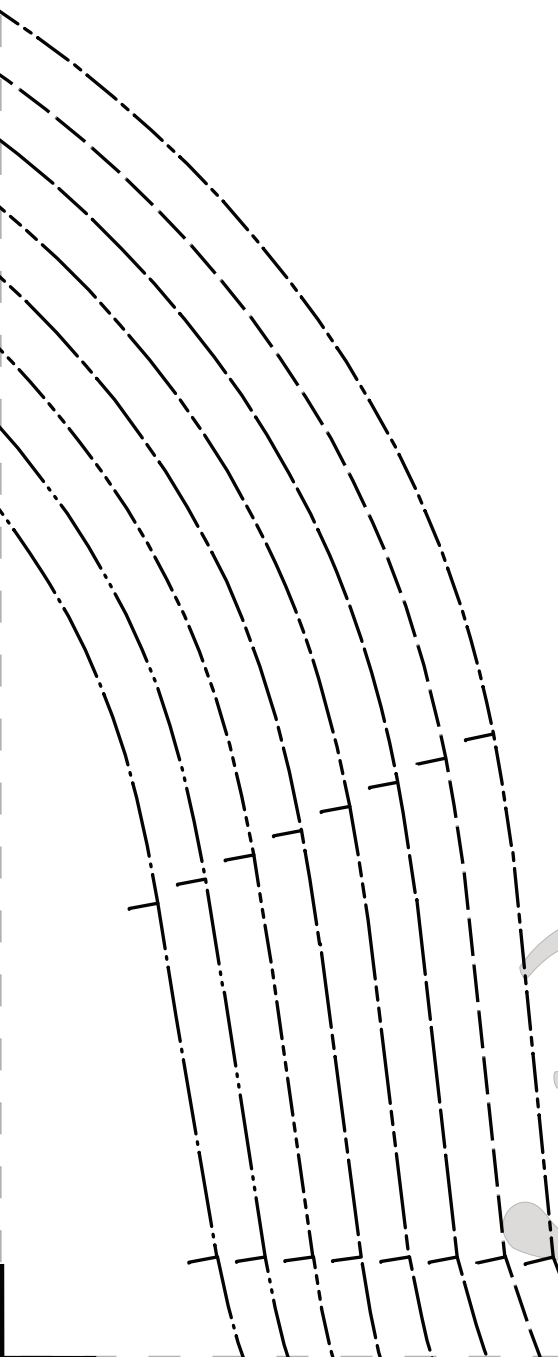
GRAINLINE

36

37







39

MDF189

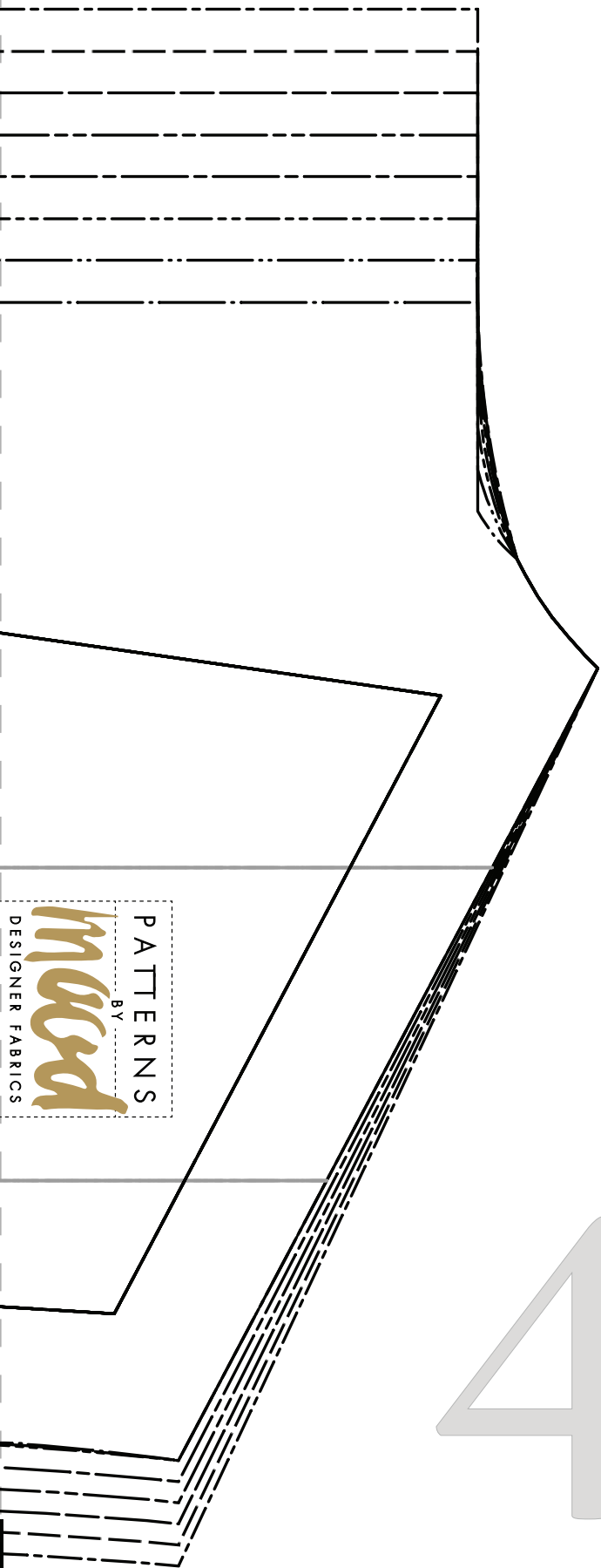
#MoodForrestPattern

“The Forrest Jumpsuit”
MDF189

POCKET PLACEMENT TEMPLATE
DO NOT CUT IN FABRIC

40

- SIZE 0/2
- SIZE 4/6
- SIZE 8/10
- SIZE 12/14
- SIZE 16/18
- SIZE 20/22
- SIZE 24/26
- SIZE 28/30





#MoodForrestPattern

“The Forrest Jumpsuit” MDF189

SLEEVE INSET
CUT 2 OF FABRIC
FACE-TO-FACE

GRAINLINE



#MoodForrestPatter

“The Forrest Jump
MDF189

SLEEVE
CUT 2 OF FABR
FACE-TO-FAC

43

rn

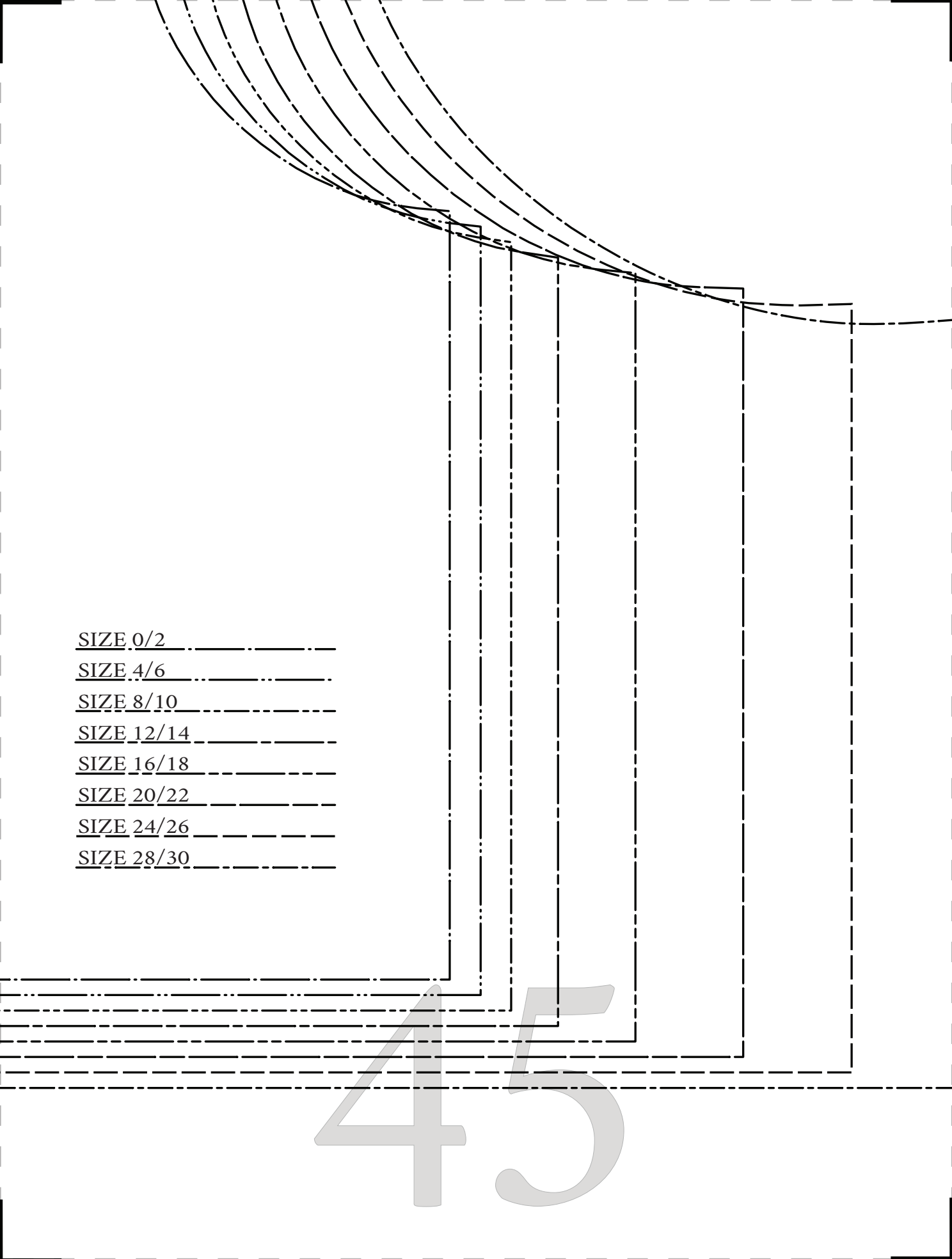
suit”

IC
E

44

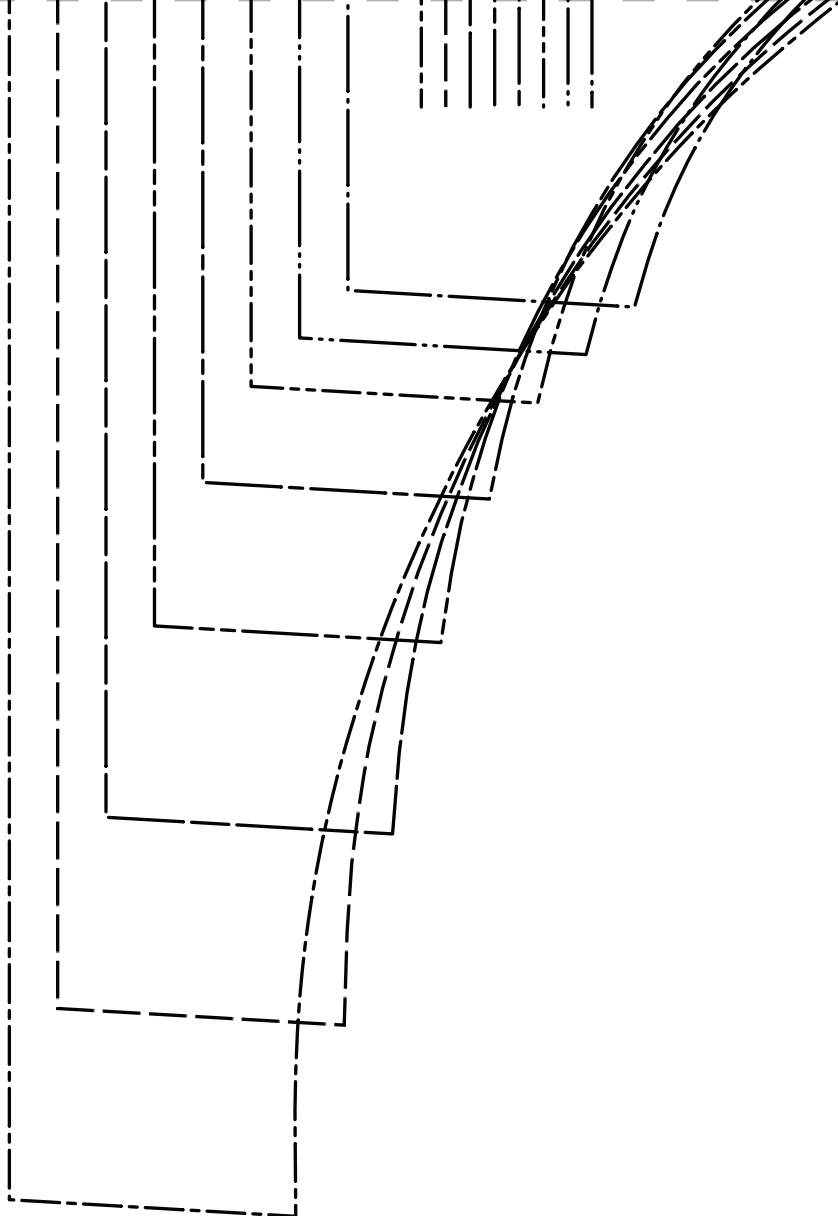
GRAINLINE





Technical drawing of a skirt pattern. The pattern consists of a waistband, a skirt body, and a hem. The waistband is shown with a curved top edge and a straight bottom edge. The skirt body is shown with a straight side edge and a curved hem. The hem is shown with a curved top edge and a straight bottom edge. The pattern is drawn with solid lines for the main pieces and dashed lines for the hem and waistband. The pattern is labeled with size ranges: SIZE 0/2, SIZE 4/6, SIZE 8/10, SIZE 12/14, SIZE 16/18, SIZE 20/22, SIZE 24/26, and SIZE 28/30. A large watermark '45' is visible in the background.

SIZE 0/2
SIZE 4/6
SIZE 8/10
SIZE 12/14
SIZE 16/18
SIZE 20/22
SIZE 24/26
SIZE 28/30



46

- SIZE 0/2
- SIZE 4/6
- SIZE 8/10
- SIZE 12/14
- SIZE 16/18
- SIZE 20/22
- SIZE 24/26
- SIZE 28/30

GRAINLINE



#MoodForrestPattern

“The Forrest Jumpsuit”
MDF189

FRONT SHOULDER YOKE
CUT 2 OF FABRIC
FACE-TO-FACE

SIZE 0/2

SIZE 4/6

SIZE 8/10

SIZE 12/14

SIZE 16/18

SIZE 20/22

SIZE 24/26

SIZE 28/30



.....

.....

.....

.....

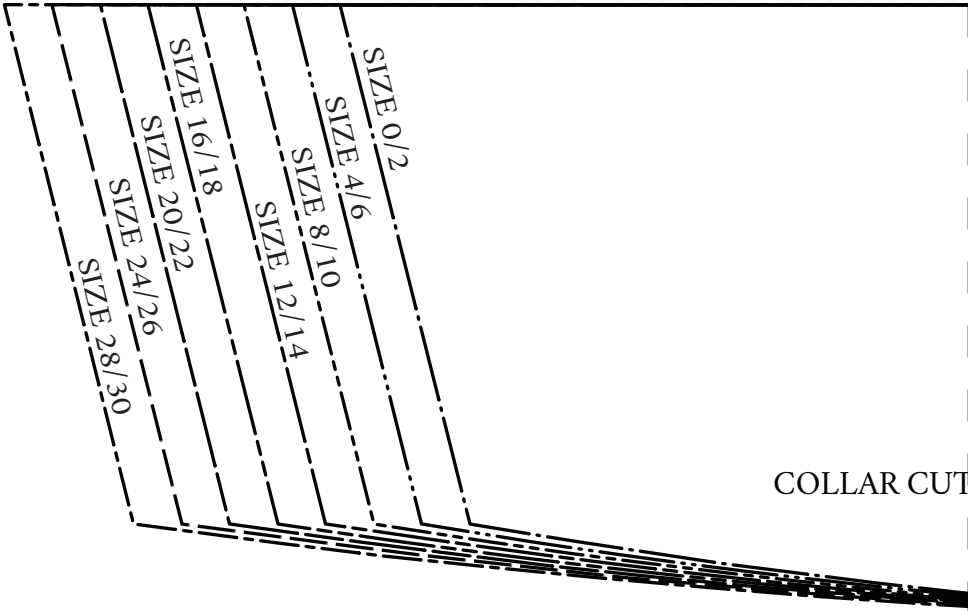
.....

.....

.....

.....

48



COLLAR CUT

SIZE 28/30 ^^PLACE ON FOLD^^

SIZE 24/26 ^^PLACE ON FOLD^^

SIZE 20/22 ^^PLACE ON FOLD^^

49

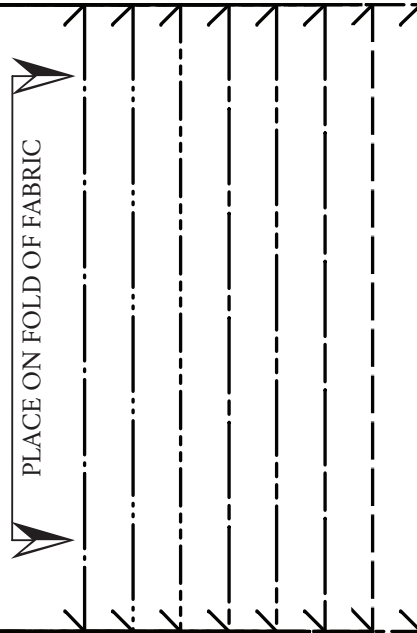


#MoodForrestPattern

"The Forrest Jumpsuit"

MDF189

2 OF FABRIC AND 2 OF FUSIBLE ON FOLD



SIZE 16/18 ^^PLACE ON FOLD^^

SIZE 12/14 ^^PLACE ON FOLD^^

SIZE 8/10 ^^PLACE ON FOLD^^

SIZE 4/6 ^^PLACE ON FOLD^^

SIZE 0/2 ^^PLACE ON FOLD^^



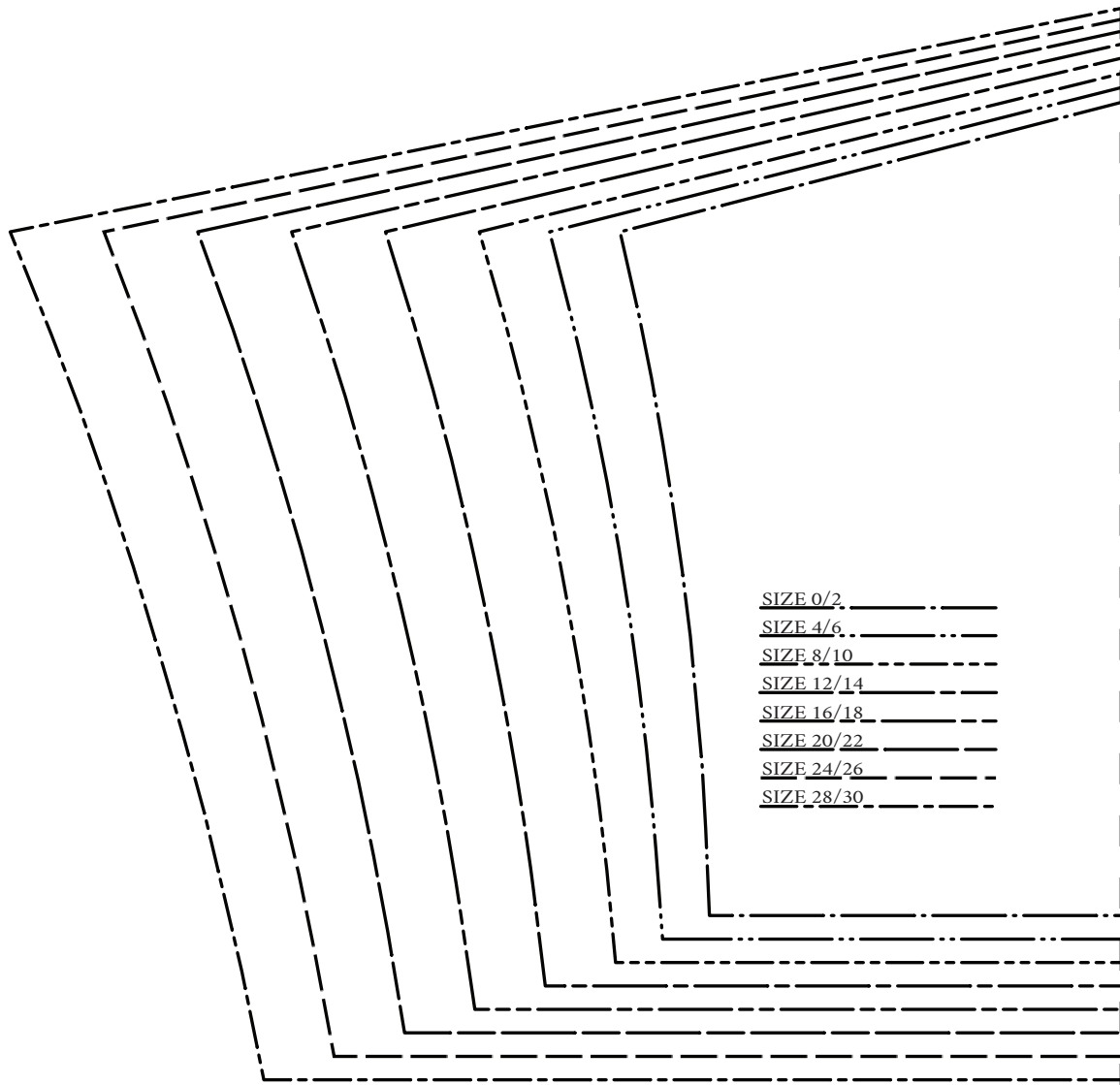
#MoodForrestPattern



“The Forrest Jumpsuit”
MDF189

POCKET FLAP
CUT 4 OF FABRIC
AND 2 OF FUSIBLE





SIZE 0/2 _____
SIZE 4/6 _____
SIZE 8/10 _____
SIZE 12/14 _____
SIZE 16/18 _____
SIZE 20/22 _____
SIZE 24/26 _____
SIZE 28/30 _____

52



#MoodForrestPattern



#MoodForrestPattern

“The Forrest Jumpsuit” MDF189

BACK BODICE YOKE
CUT 1 OF FABRIC ON FOLD

CUT ON FOLD OF FABRIC

“The Forrest Jumpsuit”
MDF189

ELT CUT 2 OF FABRIC
ND FUSIBLE ON FOLD

53



#MoodForrestPattern

“The Forrest Jumpsuit”
MDF189

POCKET
CUT 2 OF FABRIC
FACE-TO-FACE



54