



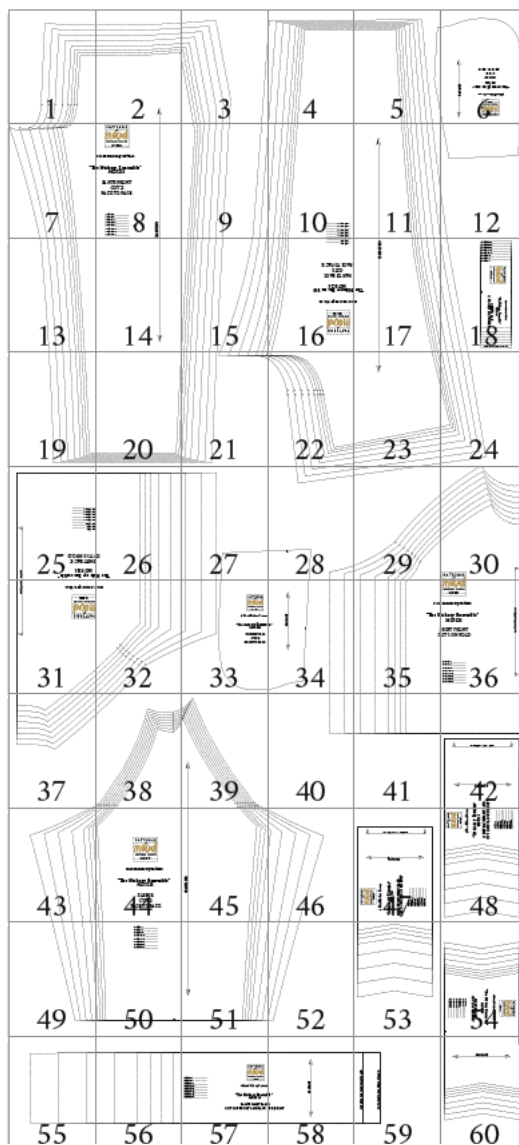
#MoodHickoryPattern

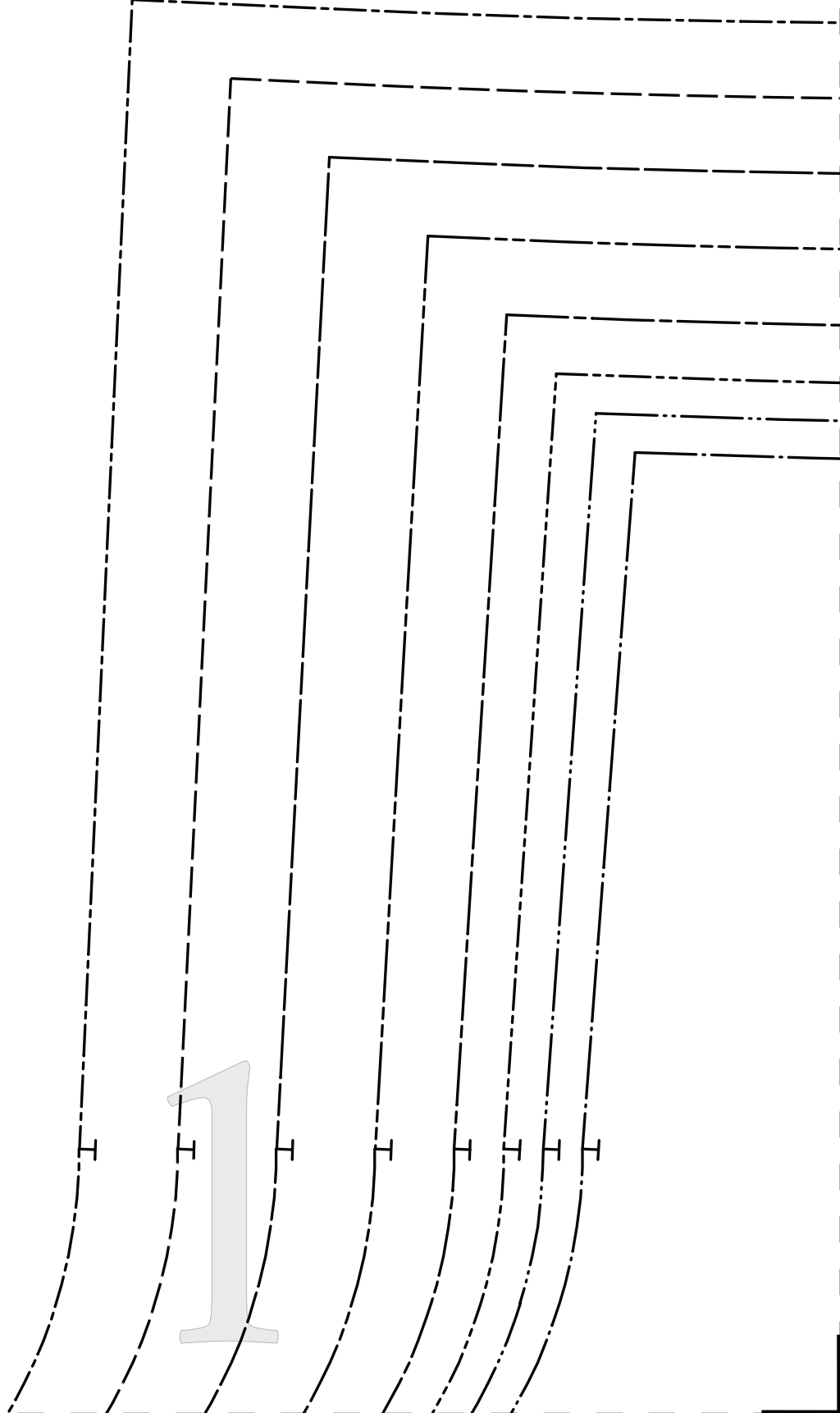
“The Hickory Ensemble”

Sizes 0/2 to 28/30

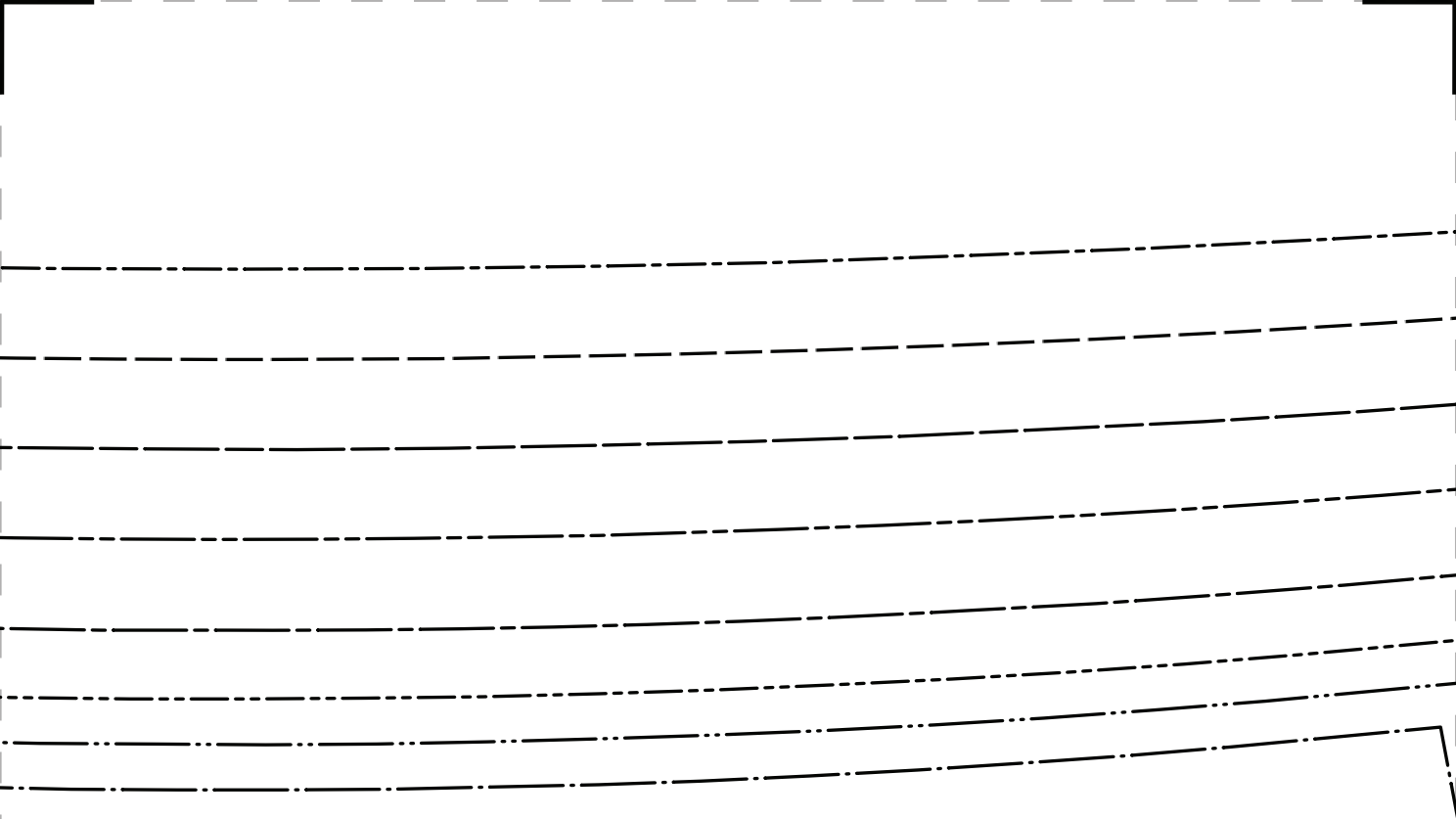
Stop!

Print just this page first to check accuracy.
The Mood square to the left should measure
2 inches. Print “actual size” (no scaling).



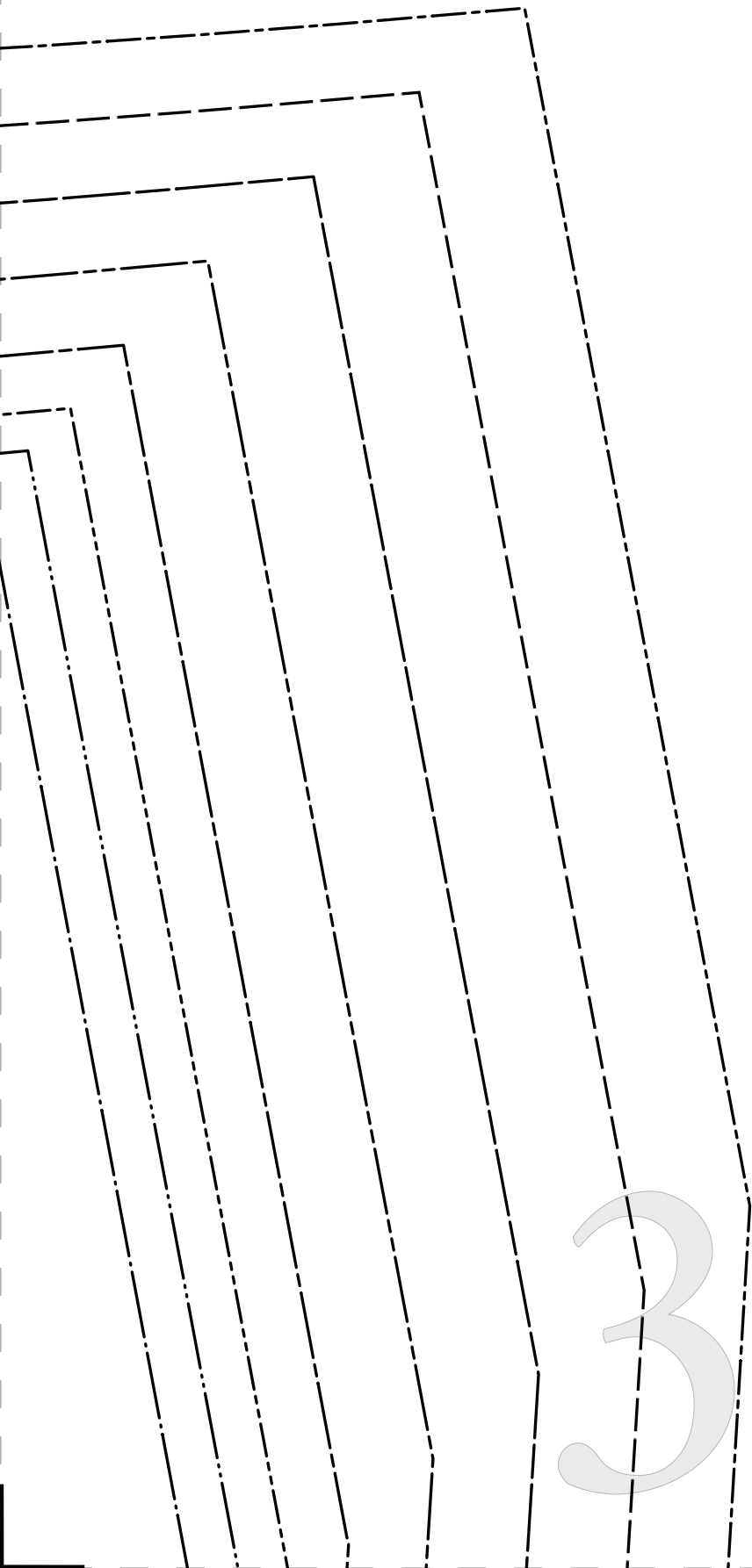


1

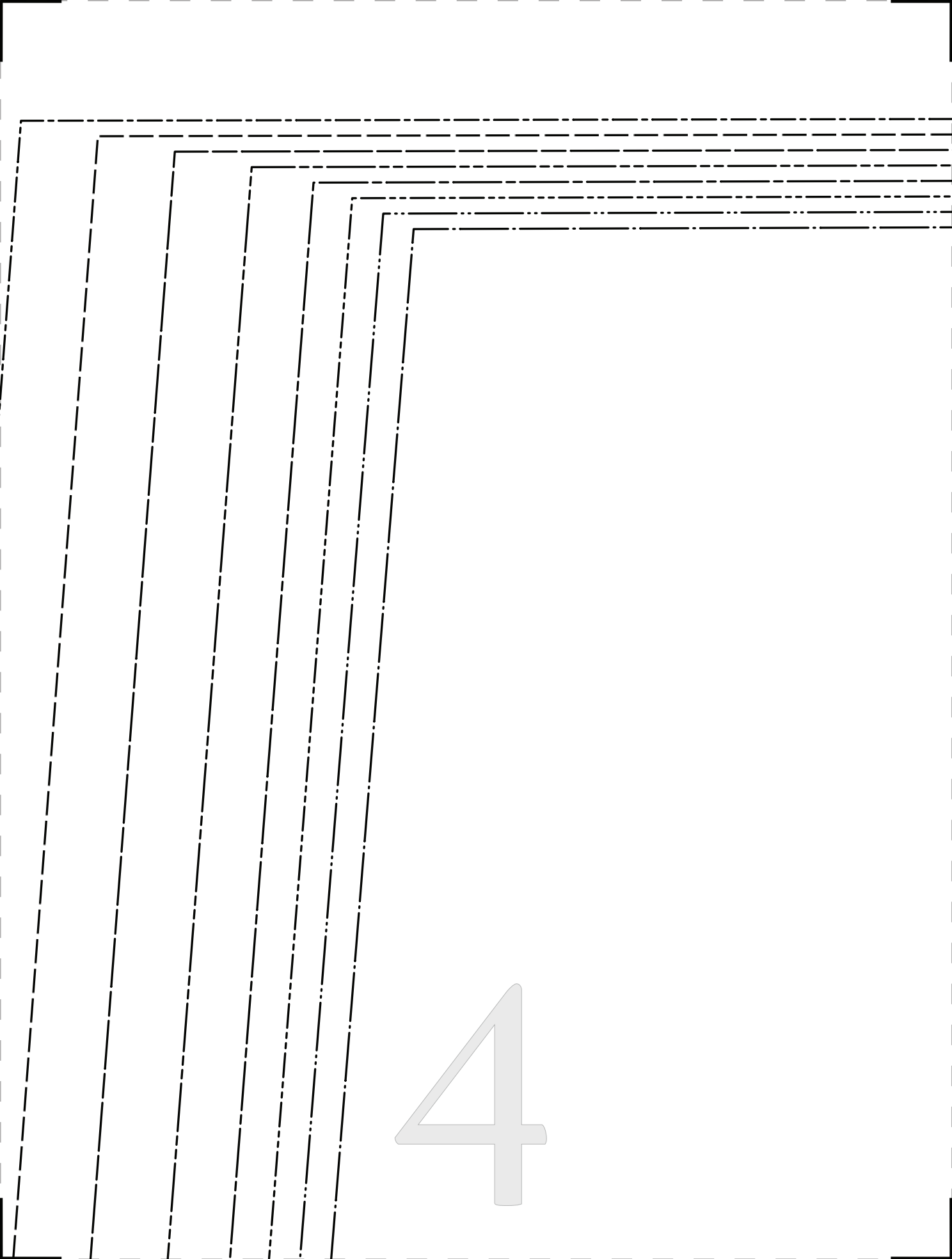


2

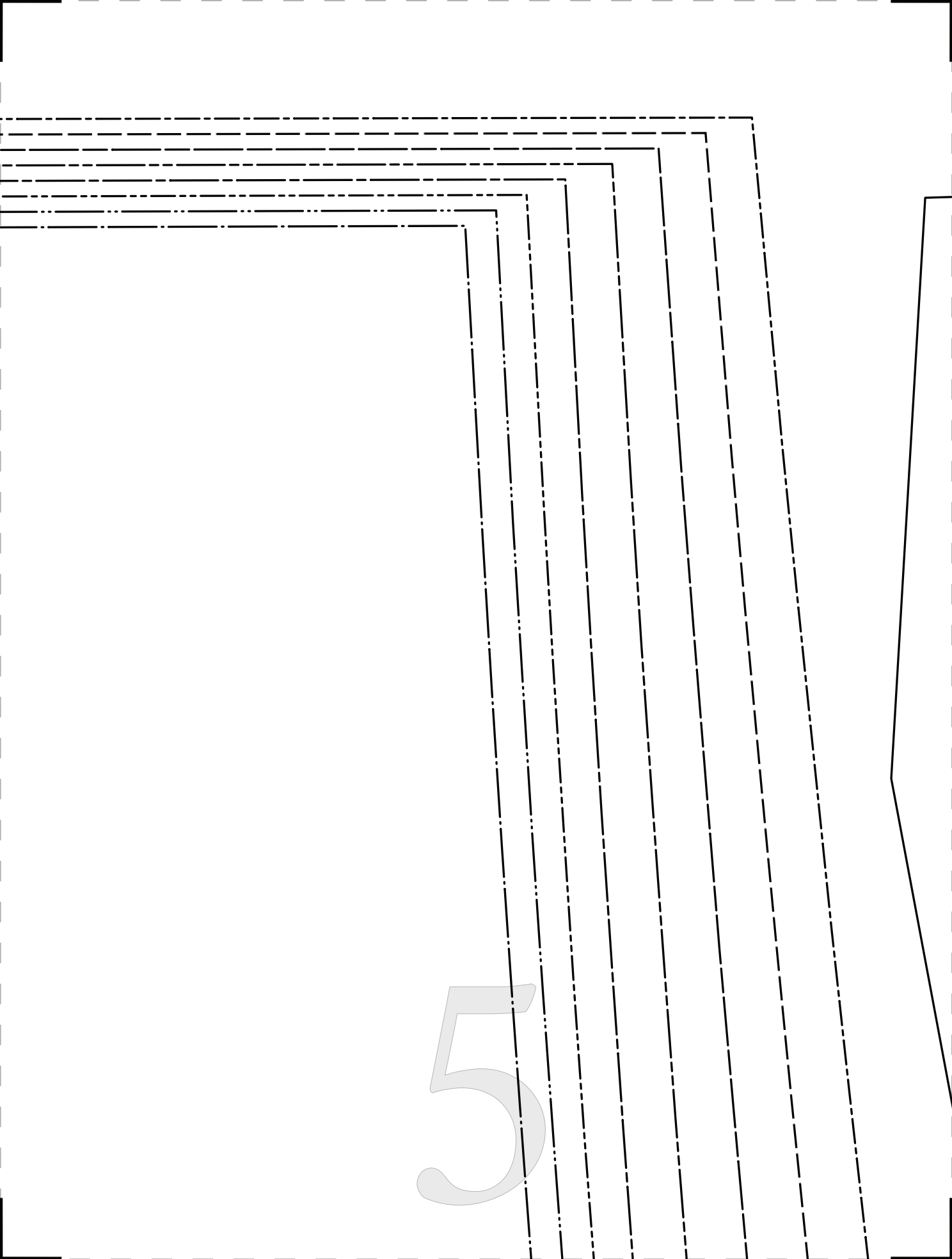




3



4



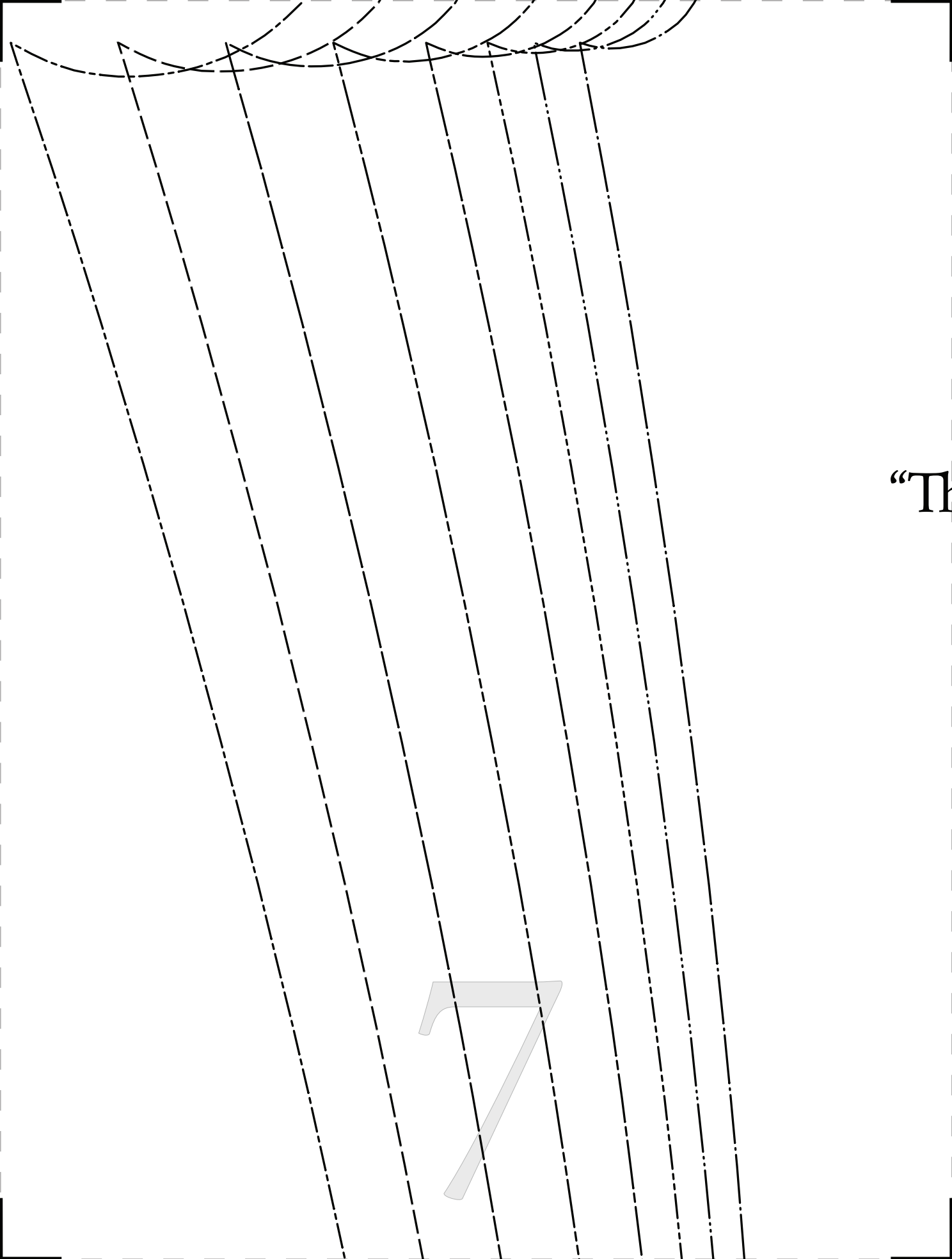
"The Hickory Ensemble"
MDF225

#MoodHickoryPattern

POCKET
CUT 2
FACE TO FACE

GRAINLINE





“Th

7



#MoodHickoryPattern

the Hickory Ensemble” MDF225

PANTS FRONT
CUT 2
FACE TO FACE

SIZE 0/2 _____

SIZE 4/6 _____

SIZE 8/10 _____

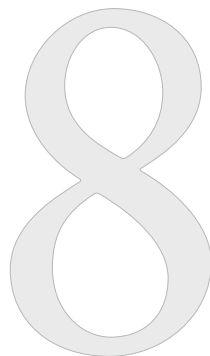
SIZE 12/14 _____

SIZE 16/18 _____

SIZE 20/22 _____

SIZE 24/26 _____

SIZE 28/30 _____



RAINLINE

9

10

SIZE 28/30

SIZE 24/26

SIZE 20/22

SIZE 16/18

SIZE 12/14



1

1

12

13

14



G

15

SIZE 0/2
SIZE 4/6
SIZE 8/10

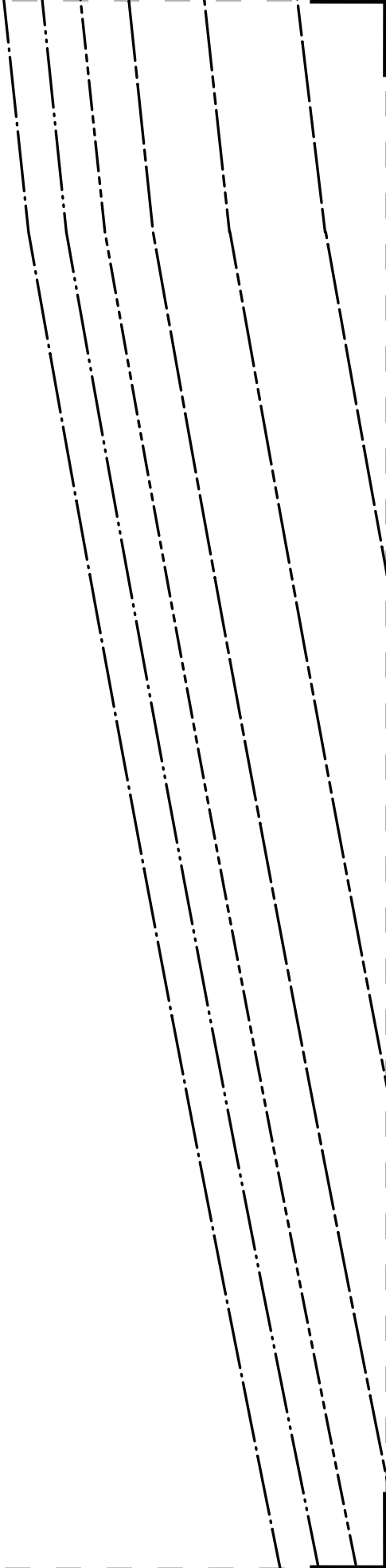
PANTS BACK
CUT 2
FACE TO FACE

Hickory Ensemble"
MDF225

oodHickoryPattern



16



17

GRAINLINE

N#
The H

SIZE 28/30
SIZE 24/26
SIZE 20/22
SIZE 16/18
SIZE 12/14
SIZE 8/10
SIZE 4/6
SIZE 0/2



#MoodHickoryPattern

“The Hickory Ensemble”
MDF225

SHIRT COLLAR
CUT 1 ON FOLD OF RIB KNIT

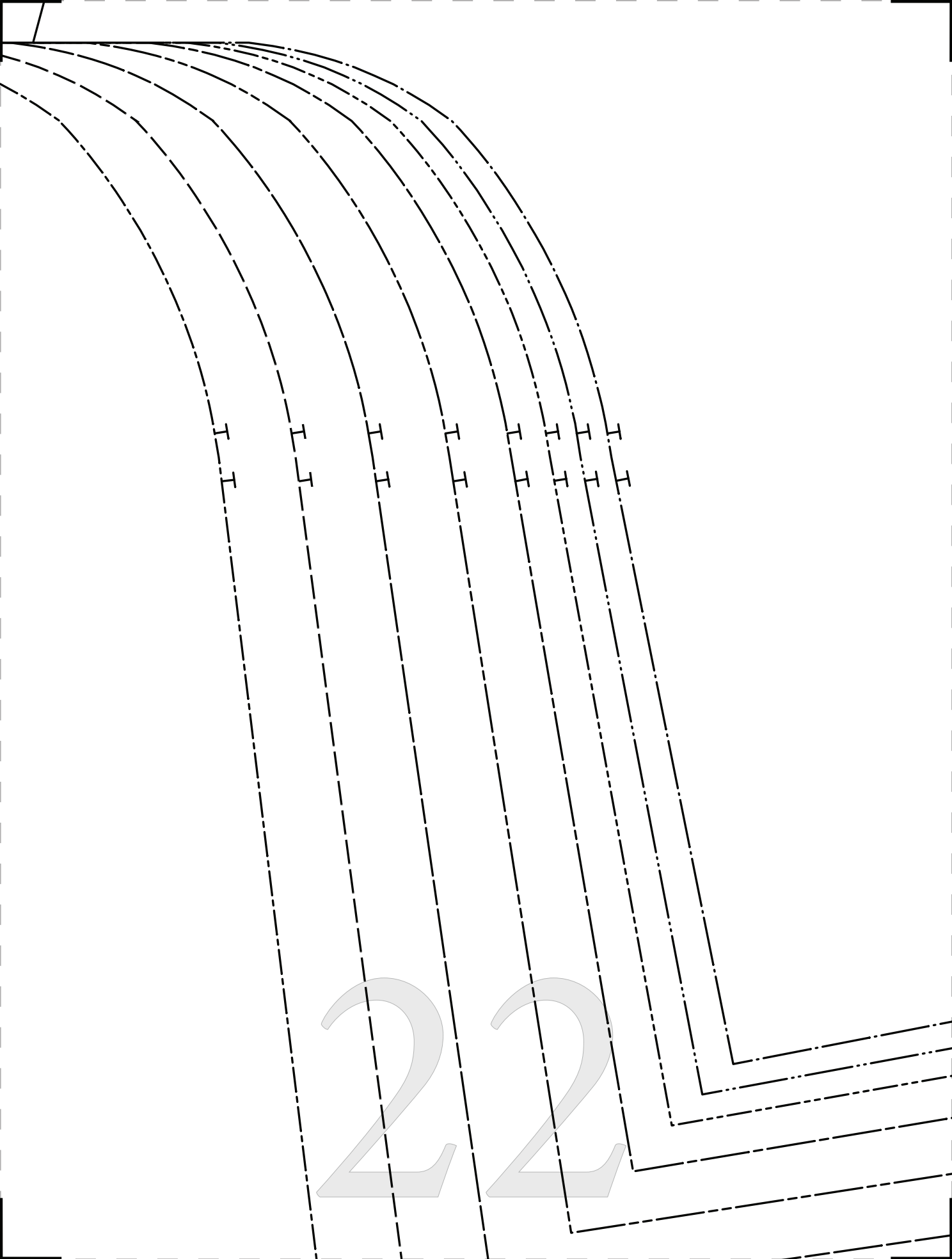
^^CENTER FRONT ON FOLD^^

18

19

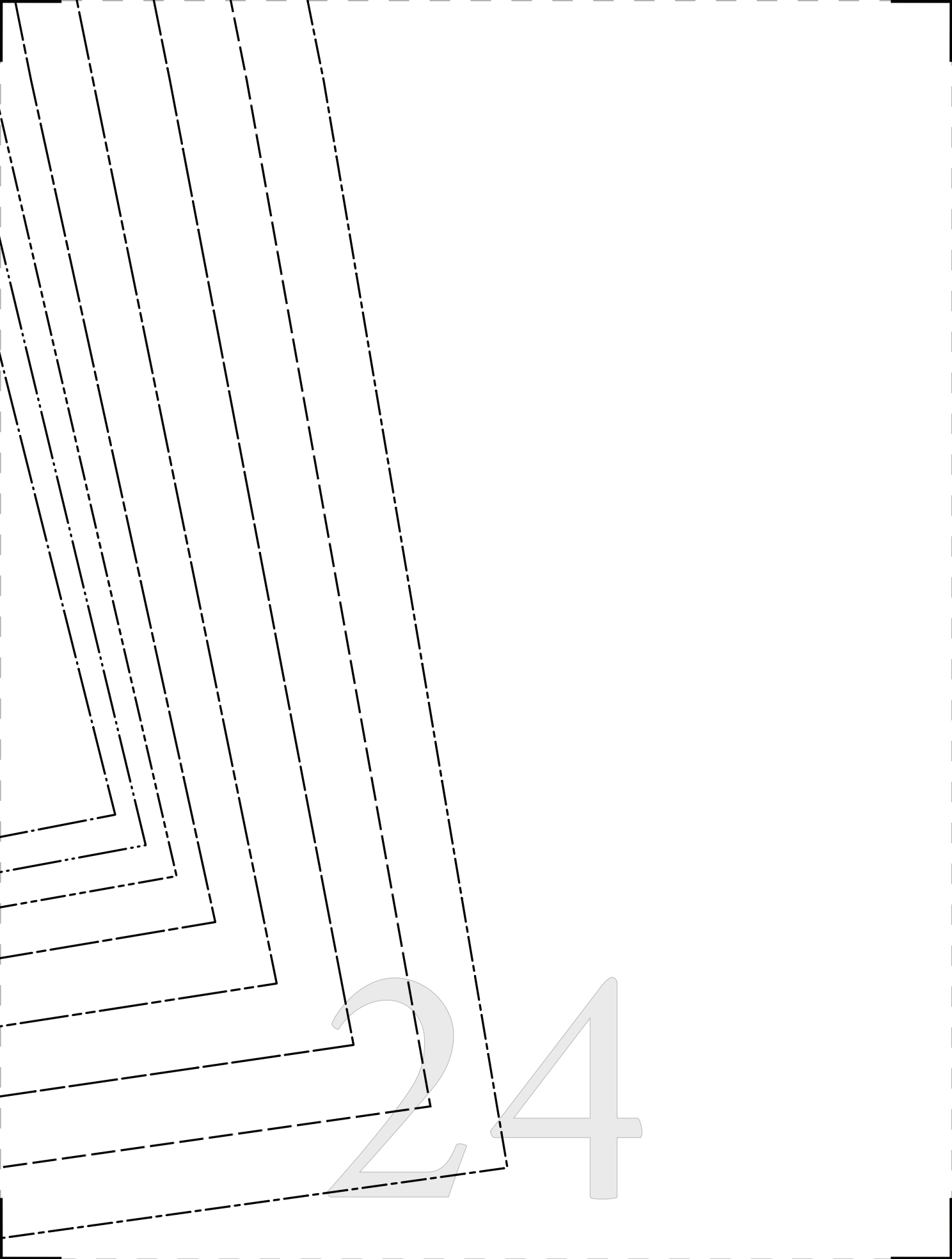
20

21





23



ckory Ensemble”
MDF225
SHIRT BACK
T 1 ON FOLD

25

SIZE 0/2
SIZE 4/6
SIZE 8/10
SIZE 12/14
SIZE 16/18
SIZE 20/22
SIZE 24/26
SIZE 28/30

PLACE ON



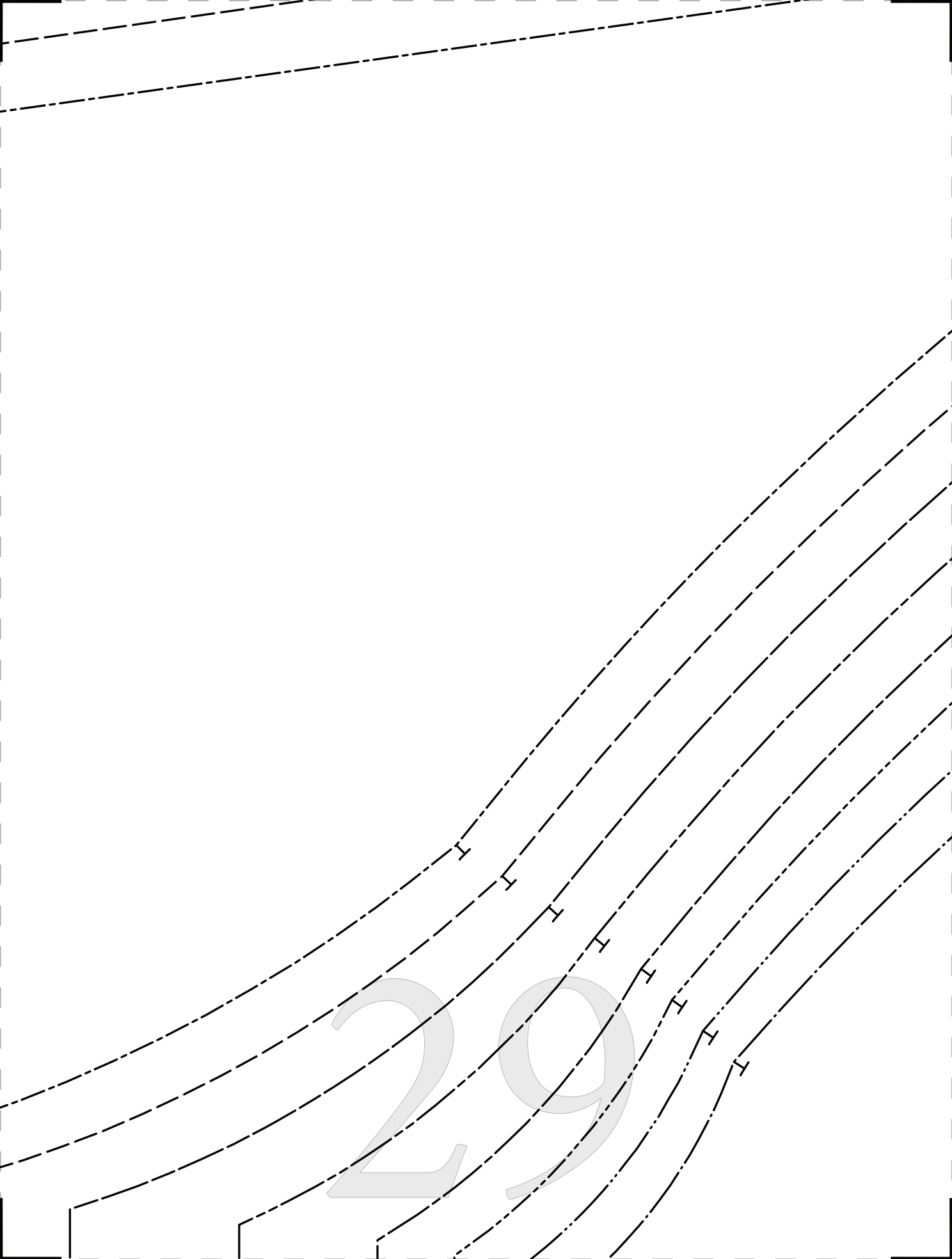
s
cu

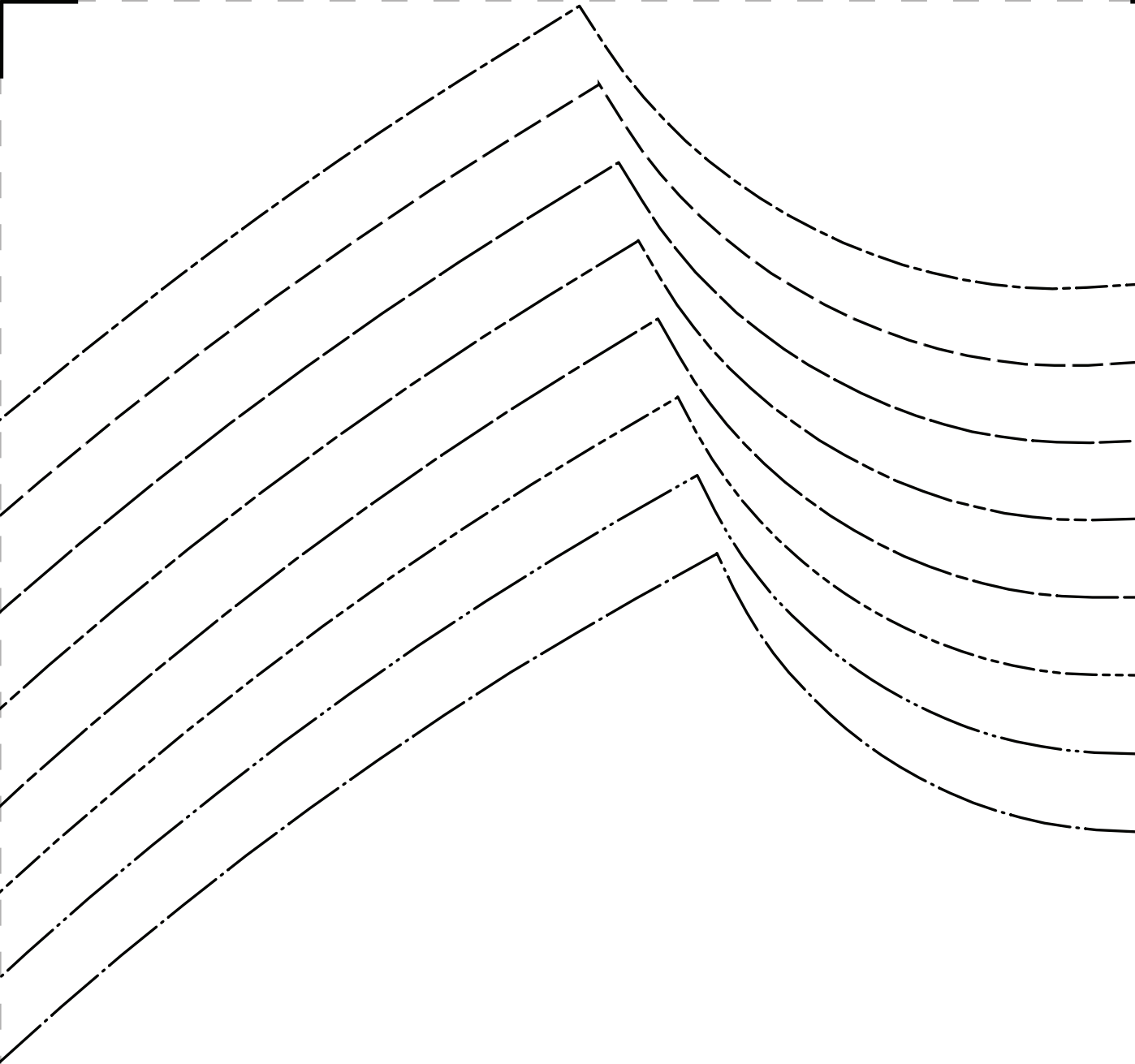
“The Hi

26

27

28





30

PATTERNS

BY



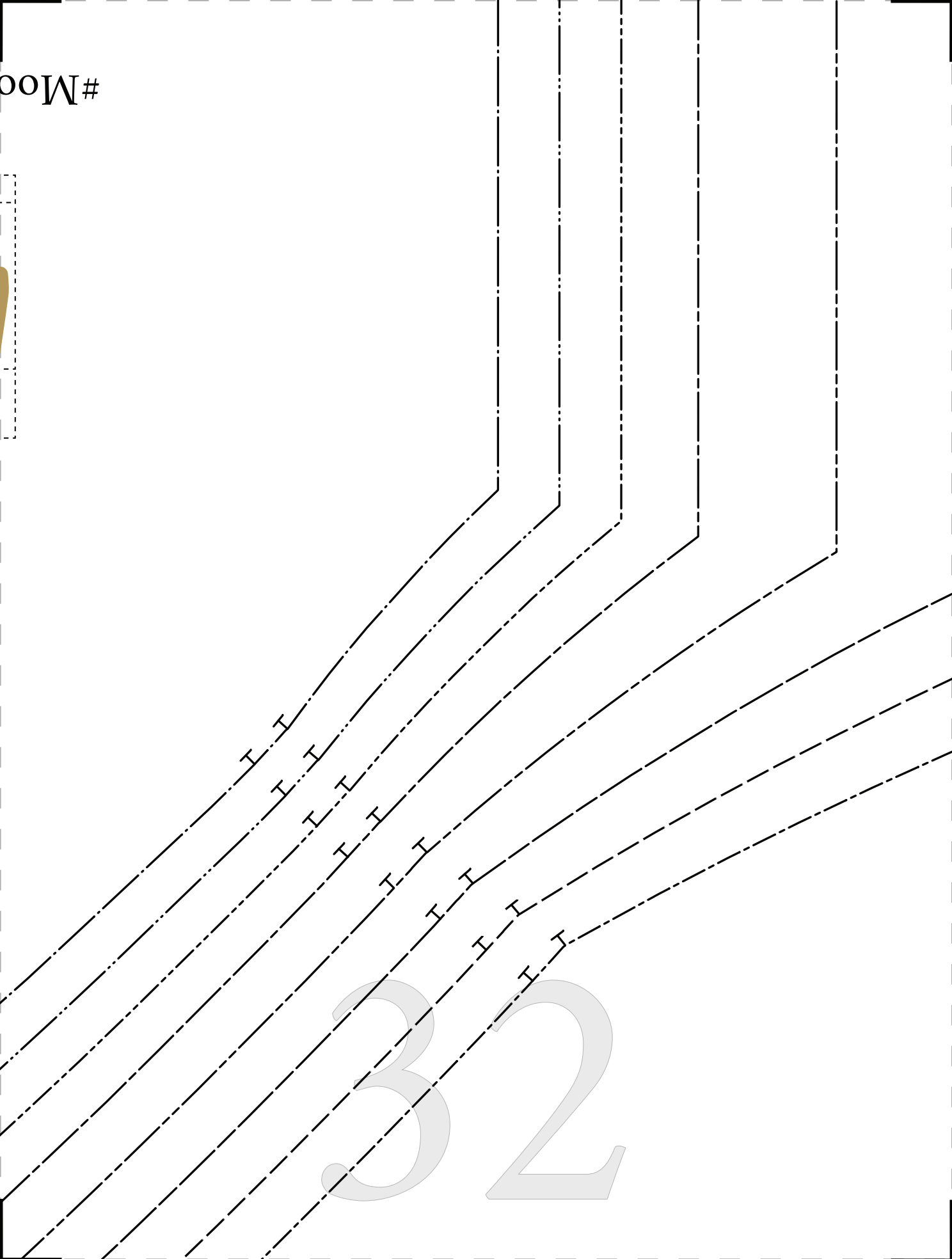


FOLD OF FABRIC



31

#Mo





#MoodHickoryPattern

“The Hickory Ensemble”
MDF225

POCKET BAG
CUT 2
FACE TO FACE

33

ble”



T

34

#M

“The H

C

35

moda

DESIGNER FABRICS

MDF225

oodHickoryPattern

Hickory Ensemble”

MDF225

SHIRT FRONT
CUT 1 ON FOLD

PLACE ON FOLD OF FABRIC

SIZE 0/2

SIZE 4/6

SIZE 8/10

SIZE 12/14

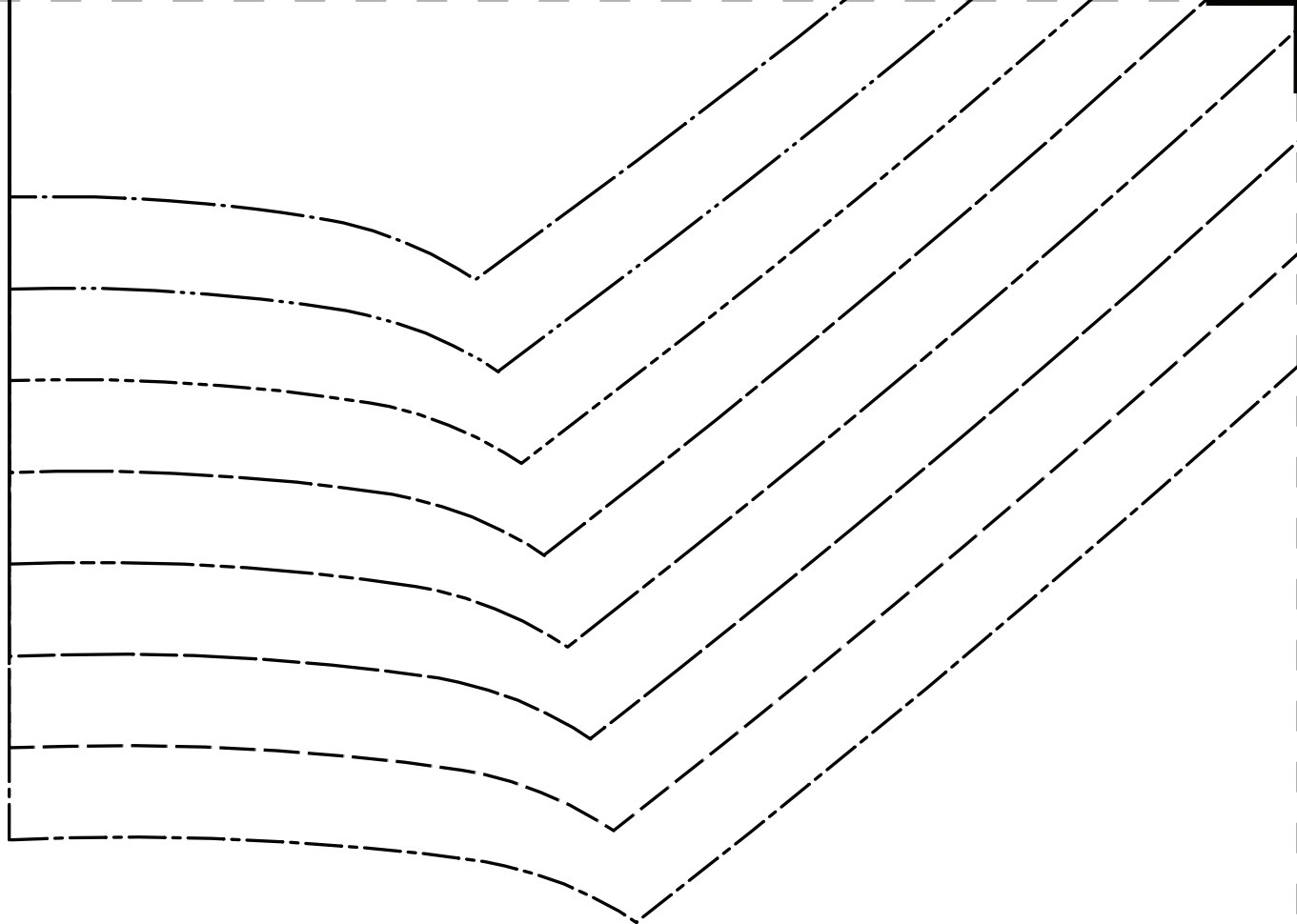
SIZE 16/18

SIZE 20/22

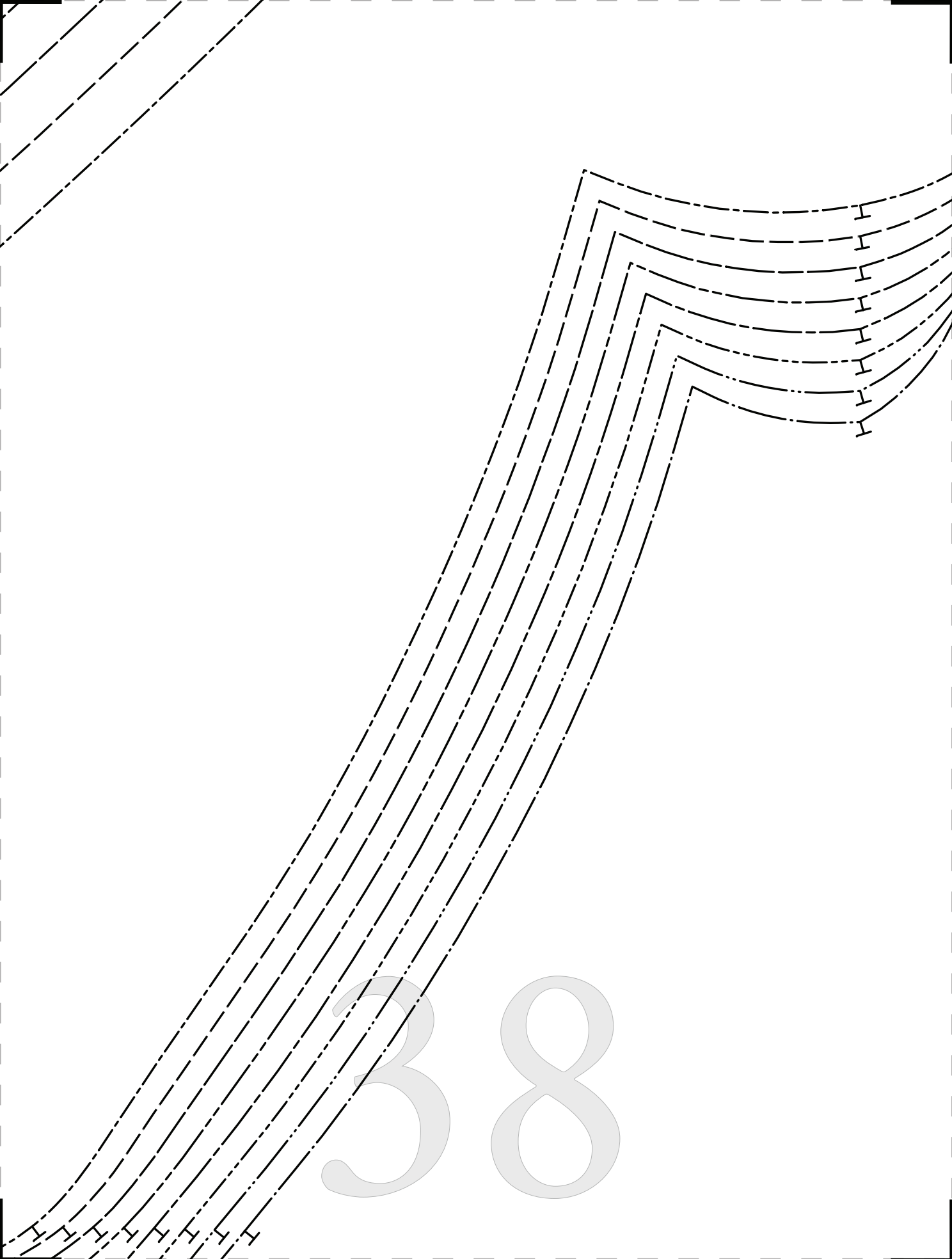
SIZE 24/26

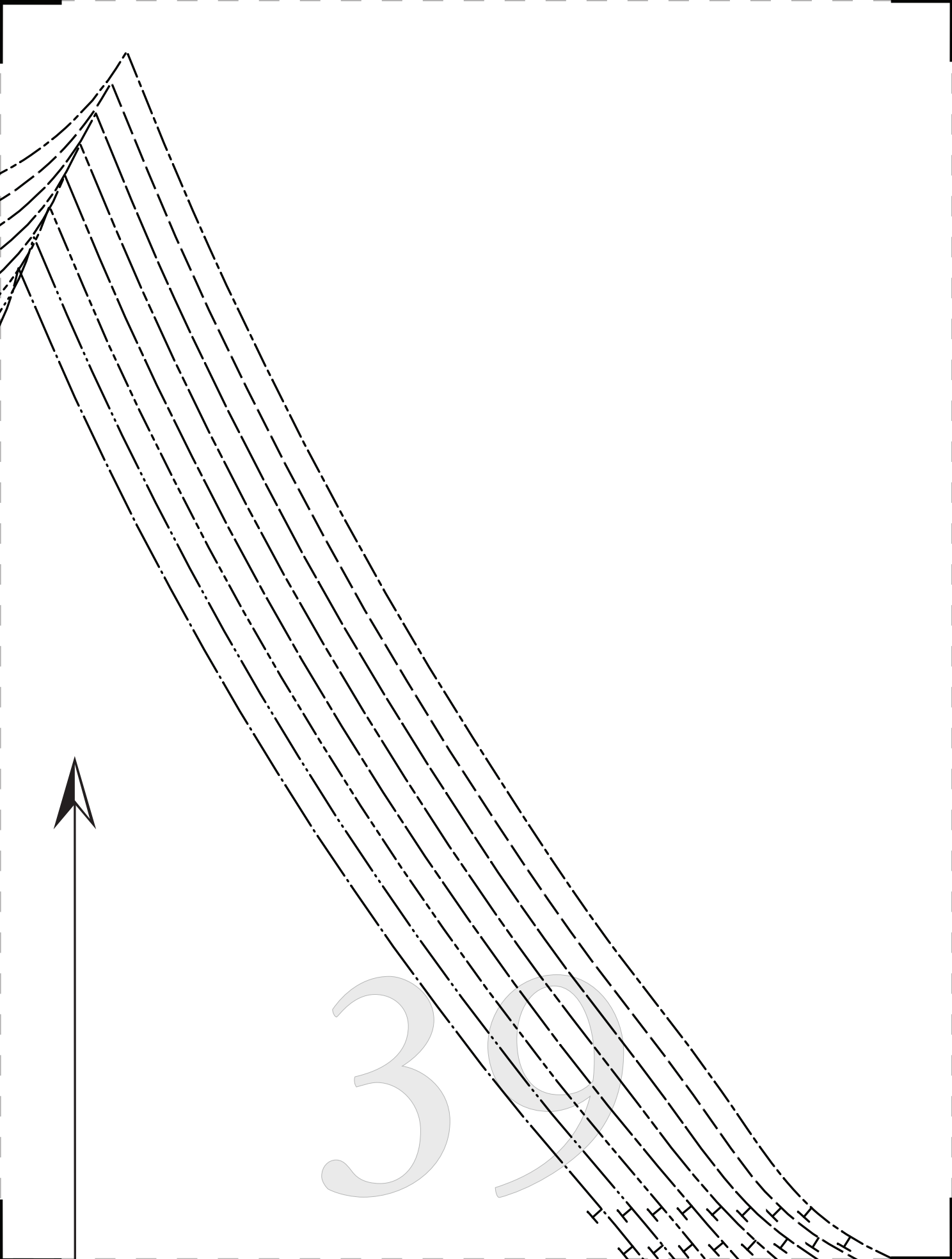
SIZE 28/30

36



37





40

--	--	--	--	--	--	--

41

PLACE ON FOLD OF FABRIC

GRAINLINE

1e"

ND
KNIT

43



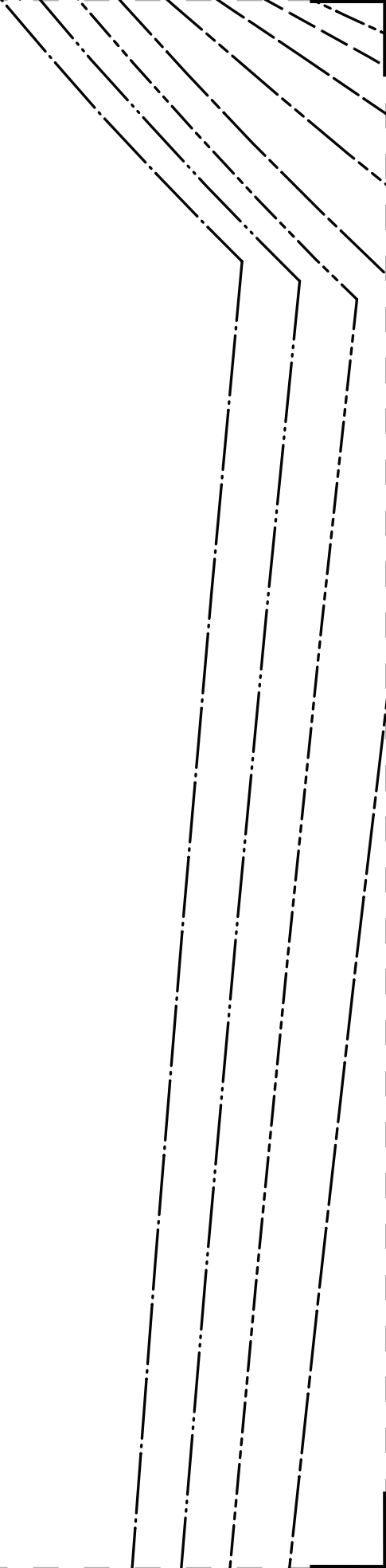
#MoodHickoryPattern

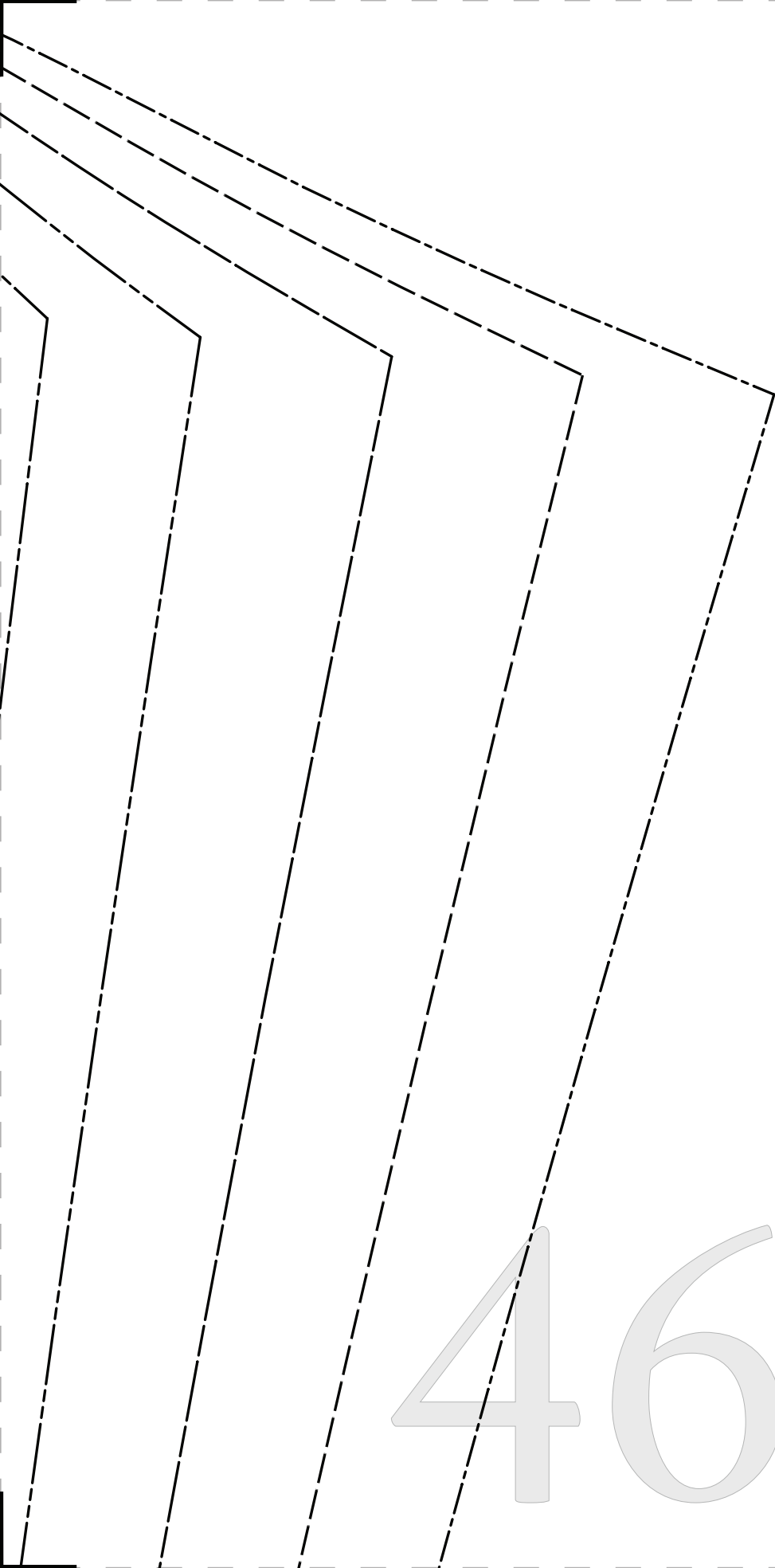
“The Hickory Ensemble”
MDF225

SLEEVE
CUT 2
FACE TO FACE

44

45





46

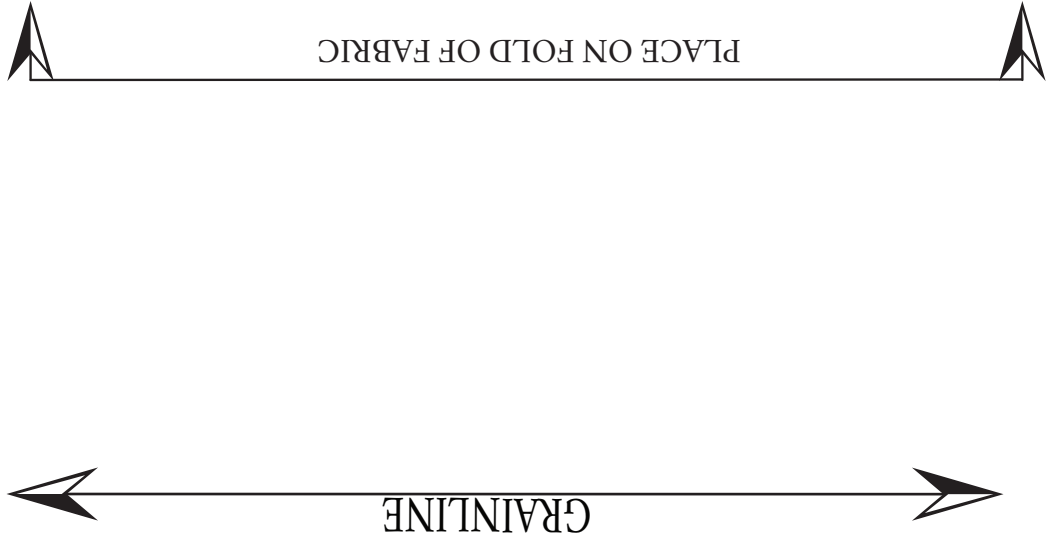


#MoodHickoryPattern

“The Hickory Ensemble” MDF225

SHIRT FRONT WAISTBAND
CUT 1 ON FOLD OF RIB KNIT

- SIZE 0/2
- SIZE 4/6
- SIZE 8/10
- SIZE 12/14
- SIZE 16/18
- SIZE 20/22
- SIZE 24/26
- SIZE 28/30





#MoodHickoryPattern

"The Hickory Ensemble" MDF225

SHIRT BACK WAISTBA CUT 1 ON FOLD OF RIB

- SIZE 0/2
- SIZE 4/6
- SIZE 8/10
- SIZE 12/14
- SIZE 16/18
- SIZE 20/22
- SIZE 24/26
- SIZE 28/30

48

49

SIZE 0/2

SIZE 4/6

SIZE 8/10

SIZE 12/14

SIZE 16/18

SIZE 20/22

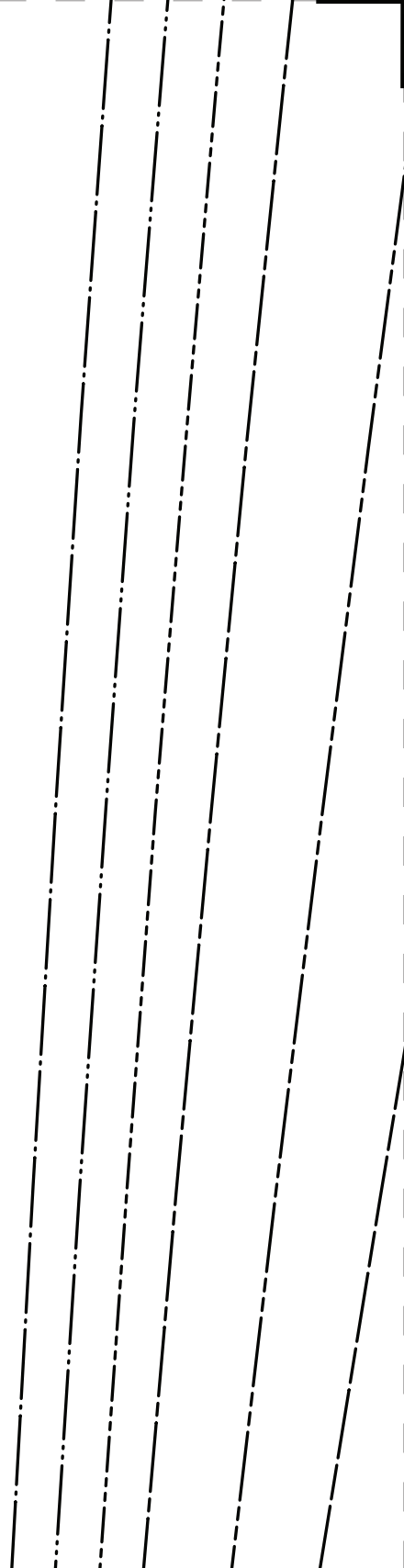
SIZE 24/26

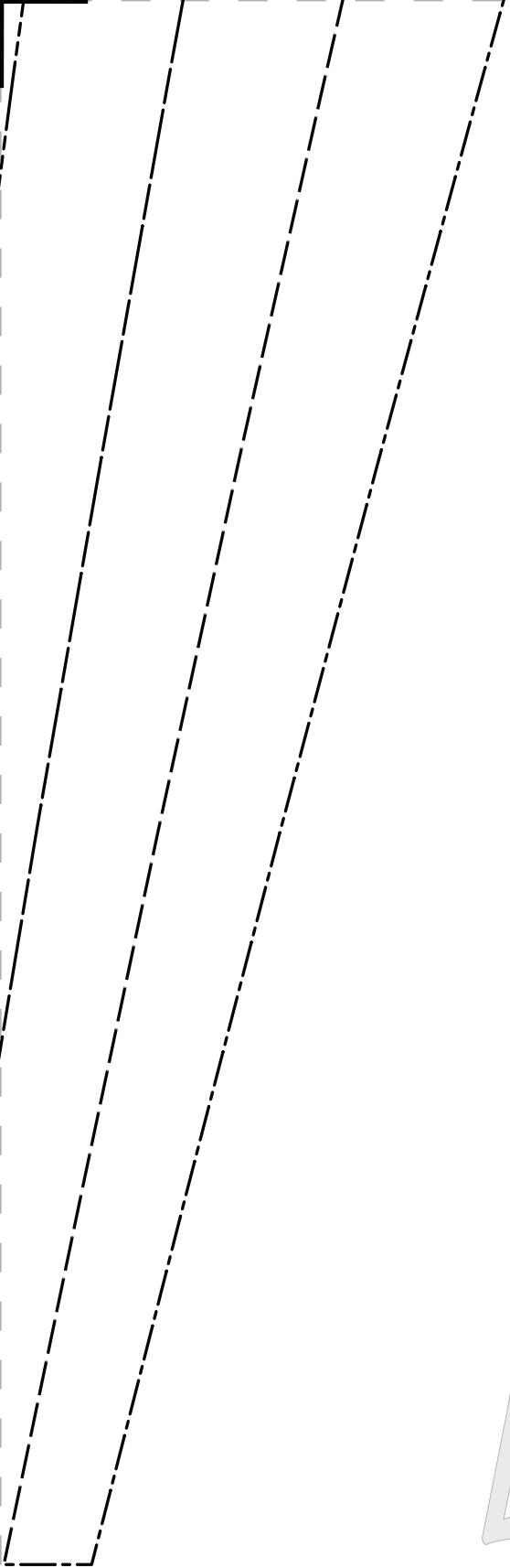
SIZE 28/30

50

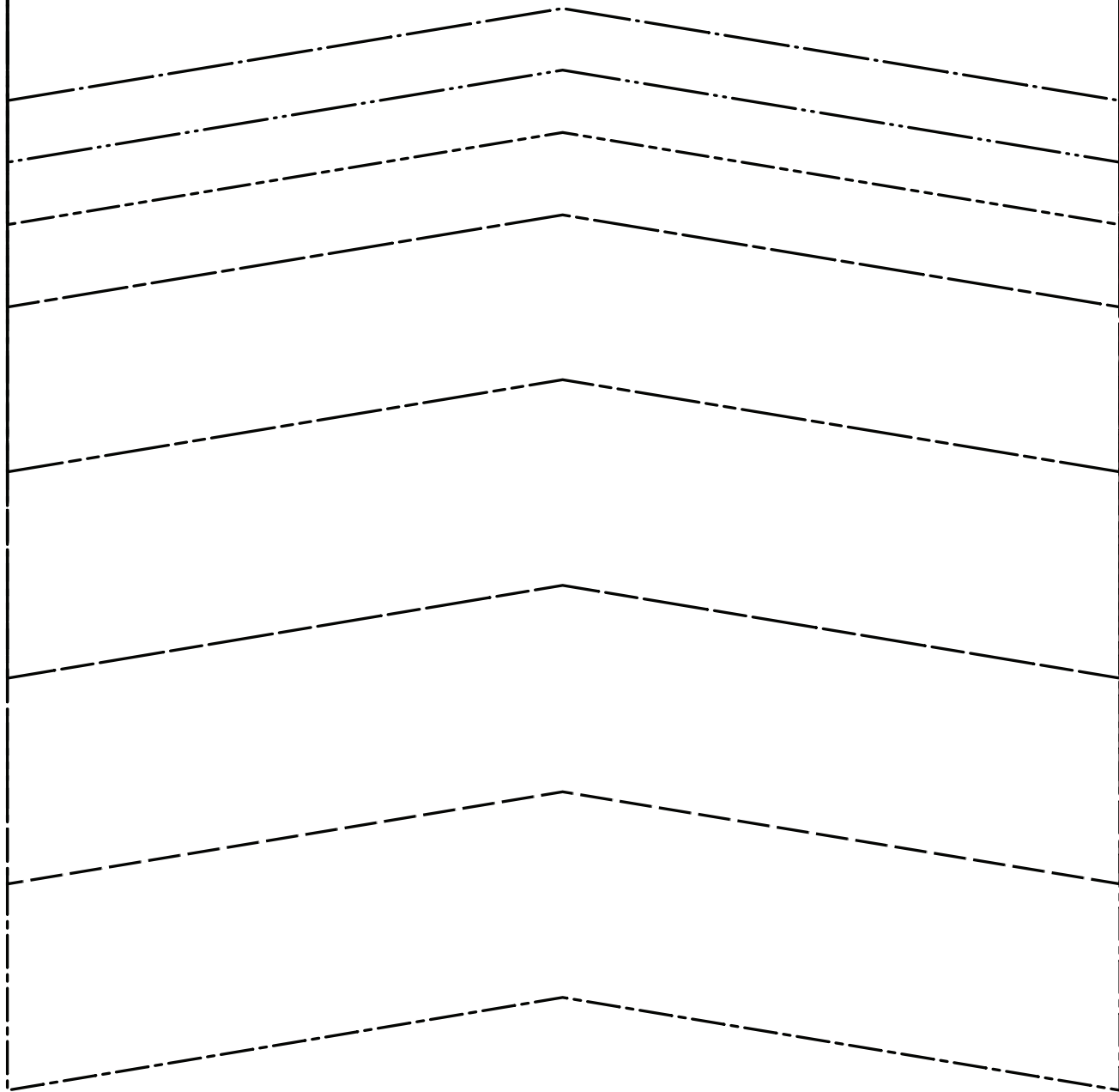


51





52



53



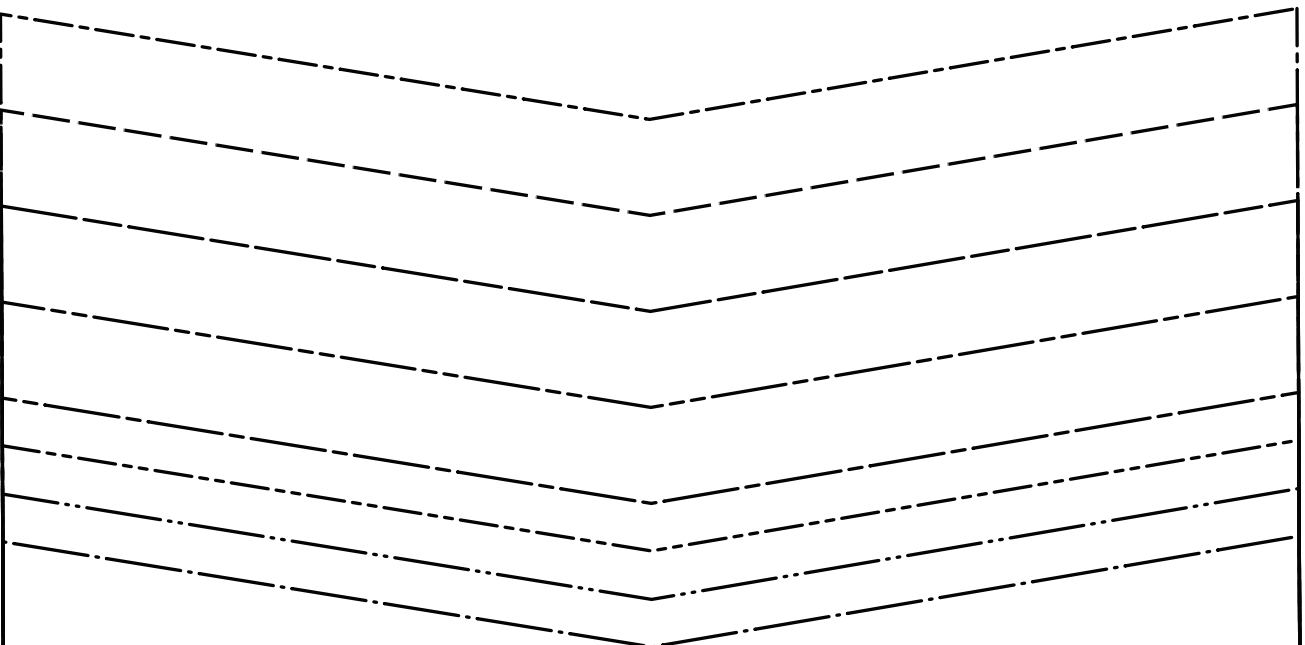
#MoodHickoryPattern

“The Hickory Ensemble”

MDF225

SLEEVE CUFF
CUT 2 OF RIB KNIT

<u>SIZE 0/2</u>	_____
<u>SIZE 4/6</u>	_____
<u>SIZE 8/10</u>	_____
<u>SIZE 12/14</u>	_____
<u>SIZE 16/18</u>	_____
<u>SIZE 20/22</u>	_____
<u>SIZE 24/26</u>	_____
<u>SIZE 28/30</u>	_____



--	--	--

55

	2010	2011	2012	2013	2014	2015	2016	2017	2018	2019	2020	2021	2022	2023	2024	2025	2026	2027	2028	2029	2030
Population (millions)	7.5	7.6	7.7	7.8	7.9	8.0	8.1	8.2	8.3	8.4	8.5	8.6	8.7	8.8	8.9	9.0	9.1	9.2	9.3	9.4	9.5
GDP (trillion USD)	45.0	48.0	51.0	54.0	57.0	60.0	63.0	66.0	69.0	72.0	75.0	78.0	81.0	84.0	87.0	90.0	93.0	96.0	99.0	102.0	105.0
Urban population (millions)	4.5	4.6	4.7	4.8	4.9	5.0	5.1	5.2	5.3	5.4	5.5	5.6	5.7	5.8	5.9	6.0	6.1	6.2	6.3	6.4	6.5
Life expectancy (years)	72.5	73.5	74.5	75.5	76.5	77.5	78.5	79.5	80.5	81.5	82.5	83.5	84.5	85.5	86.5	87.5	88.5	89.5	90.5	91.5	92.5
Renewable energy share (%)	15.0	16.0	17.0	18.0	19.0	20.0	21.0	22.0	23.0	24.0	25.0	26.0	27.0	28.0	29.0	30.0	31.0	32.0	33.0	34.0	35.0
CO2 emissions (Gt)	15.0	15.5	16.0	16.5	17.0	17.5	18.0	18.5	19.0	19.5	20.0	20.5	21.0	21.5	22.0	22.5	23.0	23.5	24.0	24.5	25.0
Forest cover (%)	22.0	22.5	23.0	23.5	24.0	24.5	25.0	25.5	26.0	26.5	27.0	27.5	28.0	28.5	29.0	29.5	30.0	30.5	31.0	31.5	32.0
Healthcare expenditure (GDP %)	5.0	5.2	5.4	5.6	5.8	6.0	6.2	6.4	6.6	6.8	7.0	7.2	7.4	7.6	7.8	8.0	8.2	8.4	8.6	8.8	9.0
Internet usage (%)	40.0	45.0	50.0	55.0	60.0	65.0	70.0	75.0	80.0	85.0	90.0	95.0	98.0	100.0	100.0	100.0	100.0	100.0	100.0	100.0	100.0
Gender inequality index	0.65	0.64	0.63	0.62	0.61	0.60	0.59	0.58	0.57	0.56	0.55	0.54	0.53	0.52	0.51	0.50	0.49	0.48	0.47	0.46	0.45
Urbanization rate (%)	60.0	60.5	61.0	61.5	62.0	62.5	63.0	63.5	64.0	64.5	65.0	65.5	66.0	66.5	67.0	67.5	68.0	68.5	69.0	69.5	70.0
Renewable energy investment (Bn USD)	10.0	11.0	12.0	13.0	14.0	15.0	16.0	17.0	18.0	19.0	20.0	21.0	22.0	23.0	24.0	25.0	26.0	27.0	28.0	29.0	30.0
CO2 emissions per capita (t)	2.0	2.05	2.1	2.15	2.2	2.25	2.3	2.35	2.4	2.45	2.5	2.55	2.6	2.65	2.7	2.75	2.8	2.85	2.9	2.95	3.0
Forest cover loss (ha)	1000000	1050000	1100000	1150000	1200000	1250000	1300000	1350000	1400000	1450000	1500000	1550000	1600000	1650000	1700000	1750000	1800000	1850000	1900000	1950000	2000000
Healthcare expenditure (Bn USD)	225.0	249.6	272.2	293.7	314.2	333.7	352.2	370.0	387.5	405.0	422.5	440.0	457.5	475.0	492.5	510.0	527.5	545.0	562.5	580.0	597.5
Internet usage (millions)	1.5	2.0	2.5	3.0	3.5	4.0	4.5	5.0	5.5	6.0	6.5	7.0	7.5	8.0	8.5	9.0	9.5	10.0	10.5	11.0	11.5
Gender inequality index (women)	0.65	0.64	0.63	0.62	0.61	0.60	0.59	0.58	0.57	0.56	0.55	0.54	0.53	0.52	0.51	0.50	0.49	0.48	0.47	0.46	0.45
Urbanization rate (millions)	4.5	4.6	4.7	4.8	4.9	5.0	5.1	5.2	5.3	5.4	5.5	5.6	5.7	5.8	5.9	6.0	6.1	6.2	6.3	6.4	6.5
Renewable energy investment (Bn USD)	10.0	11.0	12.0	13.0	14.0	15.0	16.0	17.0	18.0	19.0	20.0	21.0	22.0	23.0	24.0	25.0	26.0	27.0	28.0	29.0	30.0
CO2 emissions per capita (t)	2.0	2.05	2.1	2.15	2.2	2.25	2.3	2.35	2.4	2.45	2.5	2.55	2.6	2.65	2.7	2.75	2.8	2.85	2.9	2.95	3.0
Forest cover loss (ha)	1000000	1050000	1100000	1150000	1200000	1250000	1300000	1350000	1400000	1450000	1500000	1550000	1600000	1650000	1700000	1750000	1800000	1850000	1900000	1950000	2000000
Healthcare expenditure (Bn USD)	225.0	249.6	272.2	293.7	314.2	333.7	352.2	370.0	387.5	405.0	422.5	440.0	457.5	475.0	492.5	510.0	527.5	545.0	562.5	580.0	597.5
Internet usage (millions)	1.5	2.0	2.5	3.0	3.5	4.0	4.5	5.0	5.5	6.0	6.5	7.0	7.5	8.0	8.5	9.0	9.5	10.0	10.5	11.0	11.5
Gender inequality index (women)	0.65	0.64	0.63	0.62	0.61	0.60	0.59	0.58	0.57	0.56	0.55	0.54	0.53	0.52	0.51	0.50	0.49	0.48	0.47	0.46	0.45
Urbanization rate (millions)	4.5	4.6	4.7	4.8	4.9	5.0	5.1	5.2	5.3	5.4	5.5	5.6	5.7	5.8	5.9	6.0	6.1	6.2	6.3	6.4	6.5
Renewable energy investment (Bn USD)	10.0	11.0	12.0	13.0	14.0	15.0	16.0	17.0	18.0	19.0	20.0	21.0	22.0	23.0	24.0	25.0	26.0	27.0	28.0	29.0	30.0
CO2 emissions per capita (t)	2.0	2.05	2.1	2.15	2.2	2.25	2.3	2.35	2.4	2.45	2.5	2.55	2.6	2.65	2.7	2.75	2.8	2.85	2.9	2.95	3.0
Forest cover loss (ha)	1000000	1050000	1100000	1150000	1200000	1250000	1300000	1350000	1400000	1450000	1500000	1550000	1600000	1650000	1700000	1750000	1800000	1850000	1900000	1950000	2000000
Healthcare expenditure (Bn USD)	225.0	249.6	272.2	293.7	314.2	333.7	352.2	370.0	387.5	405.0	422.5	440.0	457.5	475.0	492.5	510.0	527.5	545.0	562.5	580.0	597.5
Internet usage (millions)	1.5	2.0	2.5	3.0	3.5	4.0	4.5	5.0	5.5	6.0	6.5	7.0	7.5	8.0	8.5	9.0	9.5	10.0	10.5	11.0	11.5
Gender inequality index (women)	0.65	0.64	0.63	0.62	0.61	0.60	0.59	0.58	0.57	0.56	0.55	0.54	0.53	0.52	0.51	0.50	0.49	0.48	0.47	0.46	0.45
Urbanization rate (millions)	4.5	4.6	4.7	4.8	4.9	5.0	5.1	5.2	5.3	5.4	5.5	5.6	5.7	5.8	5.9	6.0	6.1	6.2	6.3	6.4	6.5
Renewable energy investment (Bn USD)	10.0	11.0	12.0	13.0	14.0	15.0	16.0	17.0	18.0	19.0	20.0	21.0	22.0	23.0	24.0	25.0	26.0	27.0	28.0	29.0	30.0
CO2 emissions per capita (t)	2.0	2.05	2.1	2.15	2.2	2.25	2.3	2.35	2.4	2.45	2.5	2.55	2.6	2.65	2.7	2.75	2.8	2.85	2.9	2.95	3.0
Forest cover loss (ha)	1000000	1050000	1100000	1150000	1200000	1250000	1300000	1350000	1400000	1450000	1500000	1550000	1600000	1650000	1700000	1750000	1800000	1850000	1900000	1950000	2000000
Healthcare expenditure (Bn USD)	225.0	249.6	272.2	293.7	314.2	333.7	352.2	370.0	387.5	405.0	422.5	440.0	457.5	475.0	492.5	510.0	527.5	545.0	562.5	580.0	597.5
Internet usage (millions)	1.5	2.0	2.5	3.0	3.5	4.0	4.5	5.0	5.5	6.0	6.5	7.0	7.5	8.0	8.5	9.0	9.5	10.0	10.5	11.0	11.5
Gender inequality index (women)	0.65	0.64	0.63	0.62	0.61	0.60	0.59	0.58	0.57	0.56	0.55	0.54	0.53	0.52	0.51	0.50	0.49	0.48	0.47	0.46	0.45
Urbanization rate (millions)	4.5	4.6	4.7	4.8	4.9	5.0	5.1	5.2	5.3	5.4	5.5	5.6	5.7	5.8	5.9	6.0	6.1	6.2	6.3	6.4	6.5
Renewable energy investment (Bn USD)	10.0	11.0	12.0	13.0	14.0	15.0	16.0	17.0	18.0	19.0	20.0	21.0	22.0	23.0	24.0	25.0	26.0	27.0	28.0	29.0	30.0
CO2 emissions per capita (t)	2.0	2.05	2.1	2.15	2.2	2.25	2.3	2.35	2.4	2.45	2.5	2.55	2.6	2.65	2.7	2.75	2.8	2.85	2.9	2.95	3.0
Forest cover loss (ha)	1000000	1050000	1100000	1150000	1200000	1250000	1300000	1350000	1400000	1450000	1500000	1550000	1600000	1650000	1700000	1750000	1800000	1850000	1900000	1950000	2000000
Healthcare expenditure (Bn USD)	225.0	249.6	272.2	293.7	314.2	333.7	352.2	370.0	387.5	405.0	422.5	440.0	457.5	475.0	492.5	510.0	527.5	545.0	562.5	580.0	597.5
Internet usage (millions)	1.5	2.0	2.5	3.0	3.5	4.0	4.5	5.0	5.5	6.0	6.5	7.0	7.5	8.0	8.5	9.0	9.5	10.0	10.5	11.0	11.5
Gender inequality index (women)	0.65	0.64	0.63	0.62	0.61	0.60	0.59	0.58	0.57	0.56	0.55	0.54	0.53	0.52	0.51	0.50	0.49	0.48	0.47	0.46	0.45
Urbanization rate (millions)	4.5	4.6	4.7	4.8	4.9	5.0	5.1	5.2	5.3	5.4	5.5	5.6	5.7	5.8	5.9	6.0	6.1	6.2	6.3	6.4	6.5
Renewable energy investment (Bn USD)	10.0	11.0	12.0	13.0	14.0	15.0	16.0	17.0	18.0	19.0	20.0	21.0	22.0	23.0	24.0	25.0	26.0	27.0	28.0	29.0	30.0
CO2 emissions per capita (t)	2.0	2.05	2.1	2.15	2.2	2.25	2.3	2.35	2.4	2.45	2.5	2.55	2.6	2.65	2.7	2.75	2.8	2.85	2.9	2.95	3.0
Forest cover loss (ha)	1000000	1050000	1100000	1150000	1200000	1250000	1300000	1350000	1400000	1450000	1500000	1550000	1600000	1650000	1700000	1750000	1800000	1850000	1900000	1950000	2000000
Healthcare expenditure (Bn USD)	225.0	249.6	272.2	293.7	314.2	333.7	352.2	370.0	387.5	405.0	422.5	440.0	457.5	475.0	492.5	510.0	527.5	545.0	562.5	580.0	597.5
Internet usage (millions)	1.5	2.0	2.5	3.0	3.5	4.0	4.5	5.0	5.5	6.0	6.5	7.0	7.5	8.0	8.5	9.0	9.5	10.0	10.5	11.0	11.5
Gender inequality index (women)	0.65	0.64	0.63	0.62	0.61	0.60	0.59	0.58	0.57	0.56	0.55	0.54	0.53	0.52	0.51	0.50	0.49	0.48	0.47	0.46	0.45
Urbanization rate (millions)	4.5	4.6	4.7	4.8	4.9	5.0	5.1	5.2	5.3	5.4	5.5	5.6	5.7	5.8	5.9	6.0	6.1	6.2	6.3	6.4	6.5
Renewable energy investment (Bn USD)	10.0	11.0	12.0	13.0	14.0	15.0	16.0	17.0	18.0	19.0	20.0	21.0	22.0	23.0	24.0	25.0	26.0	27.0	28.0	29.0	30.0
CO2 emissions per capita (t)	2.0	2.05	2.1	2.15	2.2	2.25	2.3	2.35	2.4	2.45	2.5	2.55	2.6	2.65	2.7	2.75	2.8	2.85	2.9	2.95	3.0
Forest cover loss (ha)	1000000	1050000	1100000	1150000	1200000	1250000	1300000	1350000	1400000	1450000	1500000	1550000	1600000	1650000	1700000	1750000	1800000	1850000	1900000	1950000	2000000
Healthcare expenditure (Bn USD)	225.0	249.6	272.2	293.7	314.2	333.7	352.2	370.0	387.5	405.0	422.5	440.0	457.5	475.0	492.5	510.0	527.5	545.0	562.5	580.0	597.5
Internet usage (millions)	1.5	2.0	2.5	3.0	3.5	4.0	4.5	5.0	5.5	6.0	6.5	7.0	7.5	8.0	8.5	9.0	9.5	10.0	10.5	11.0	11.5
Gender inequality index (women)	0.65	0.64	0.63	0.62	0.61	0.60	0.59	0.58	0.57	0.56	0.55	0.54	0.53	0.52	0						

56

SIZE 0/2 _____
SIZE 4/6 _____
SIZE 8/10 _____
SIZE 12/14 _____
SIZE 16/18 _____
SIZE 20/22 _____
SIZE 24/26 _____
SIZE 28/30 _____



#MoodHickoryPattern

“The Hickory Ensemble”
MDF225

PANTS WAISTBAND
CUT 1 OF FRONT AND BACK

57

ble”

ID
OF RIB KNIT

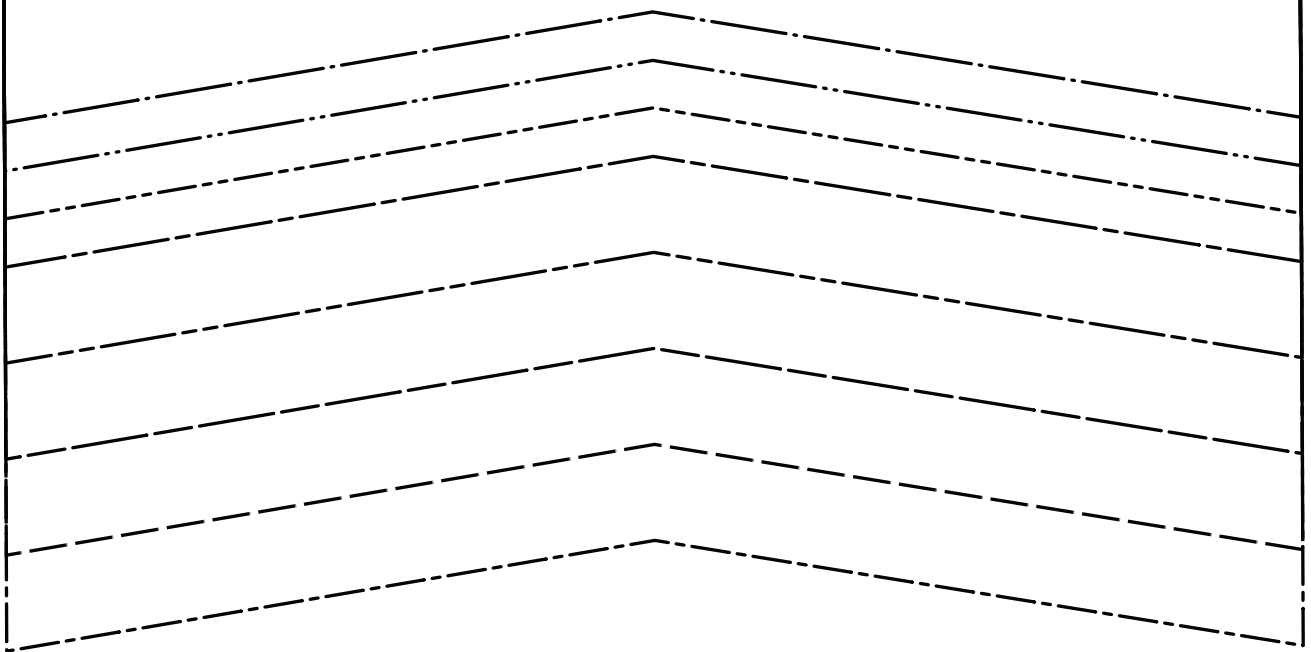


58

CUT HERE FOR FRONT WAISTBAND

CUT HERE FOR BACK WAISTBAND

59



60