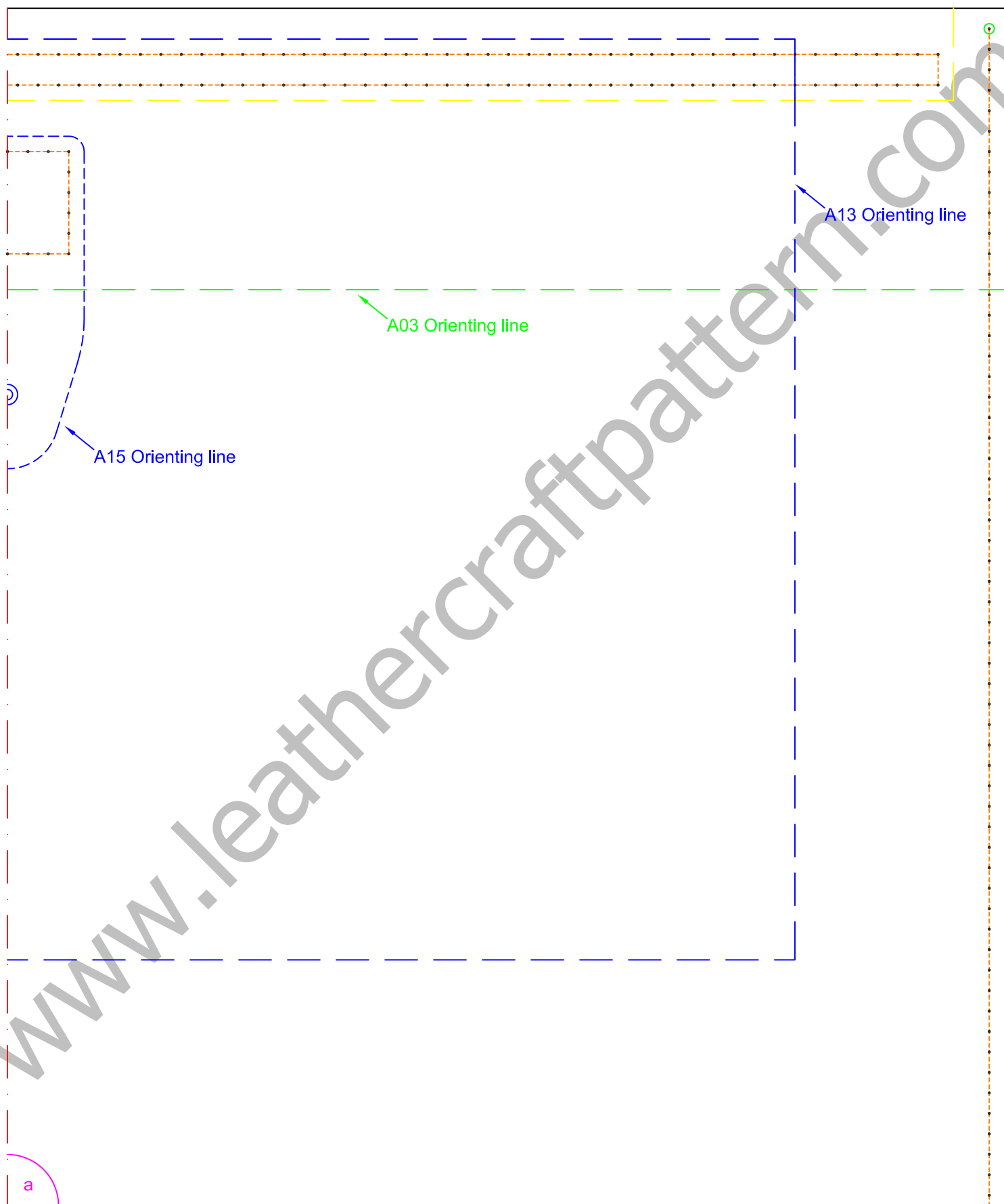
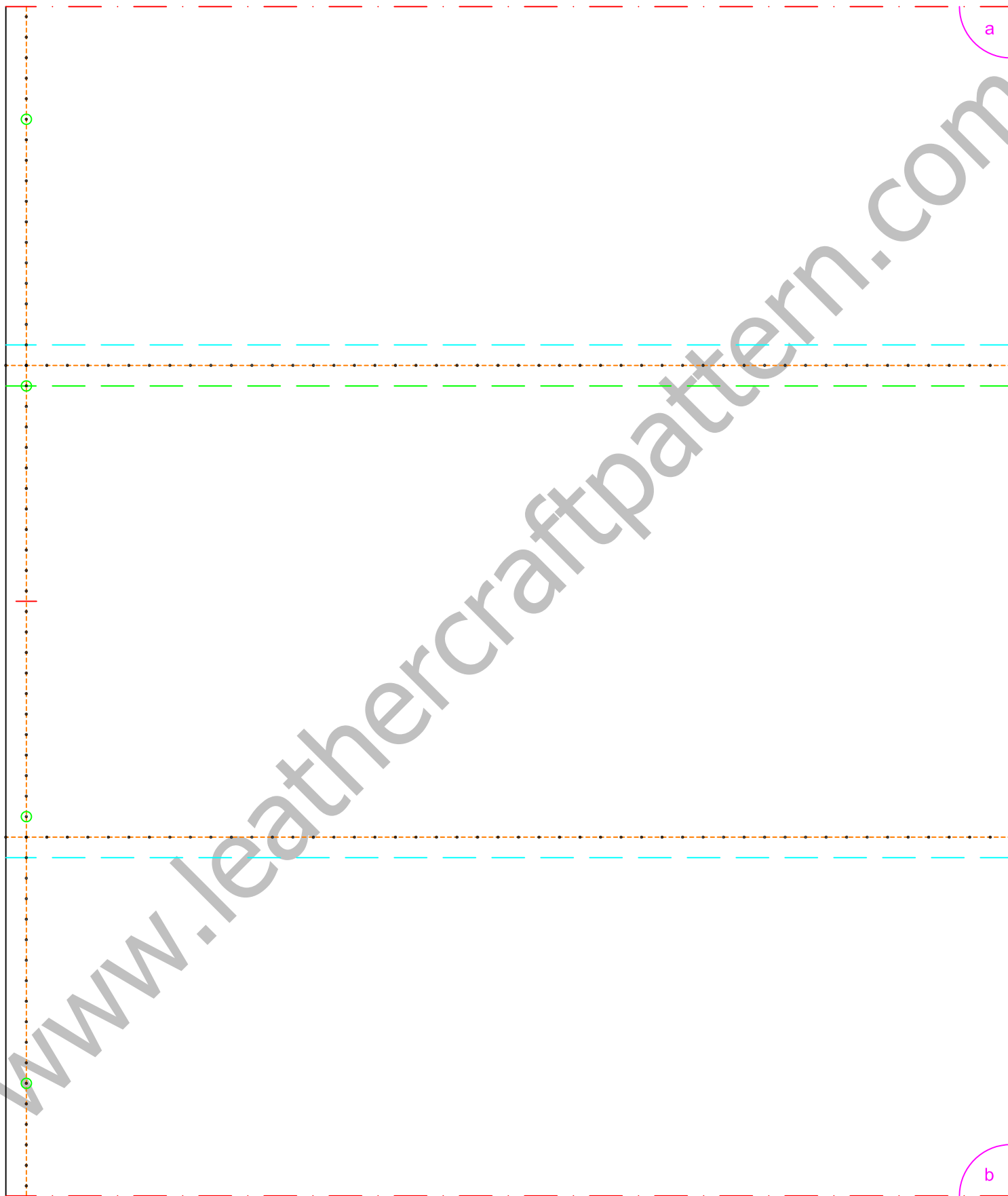
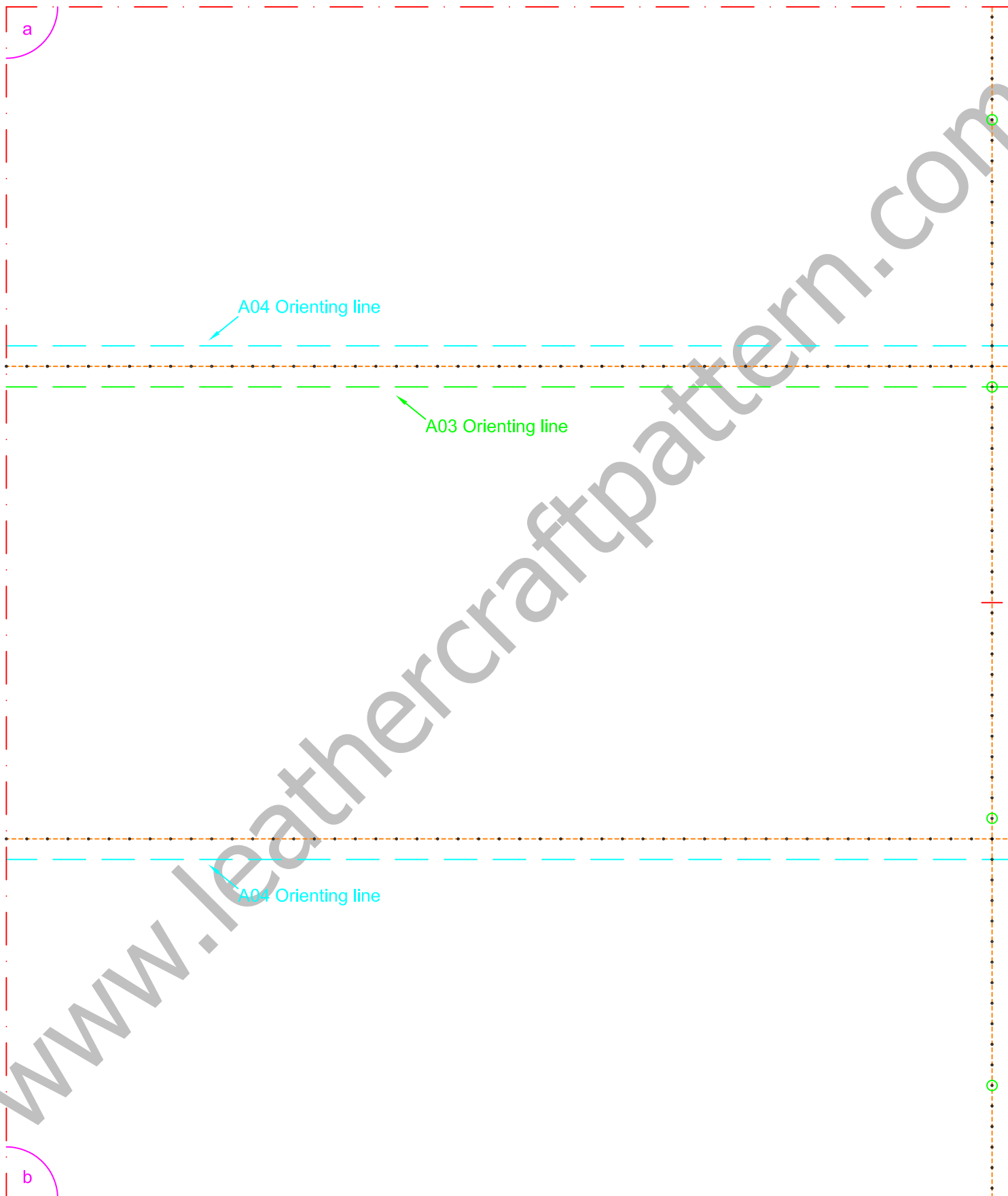


Note: 2.0mm leather is advised.

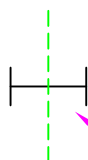
a







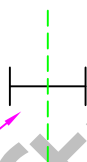
b

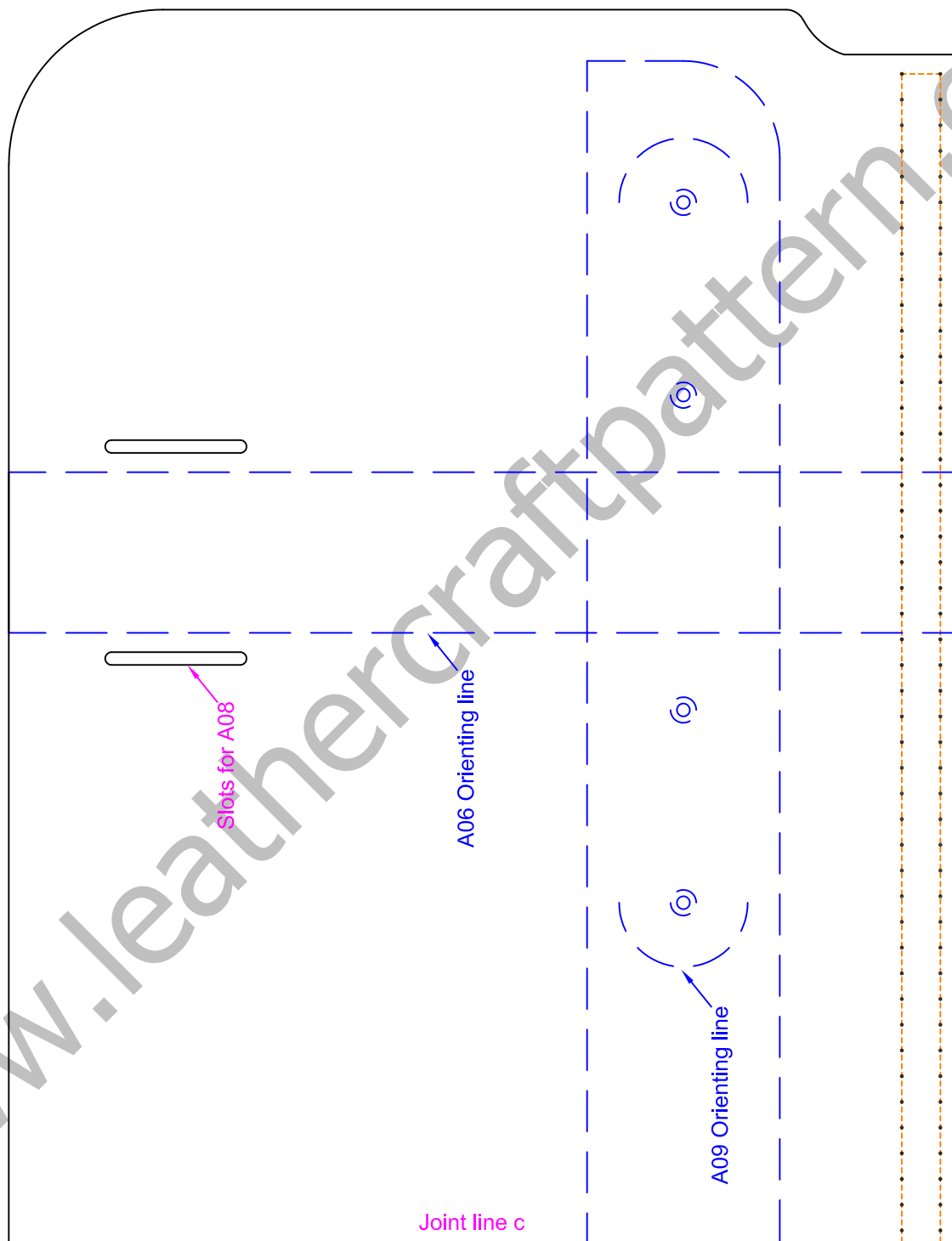


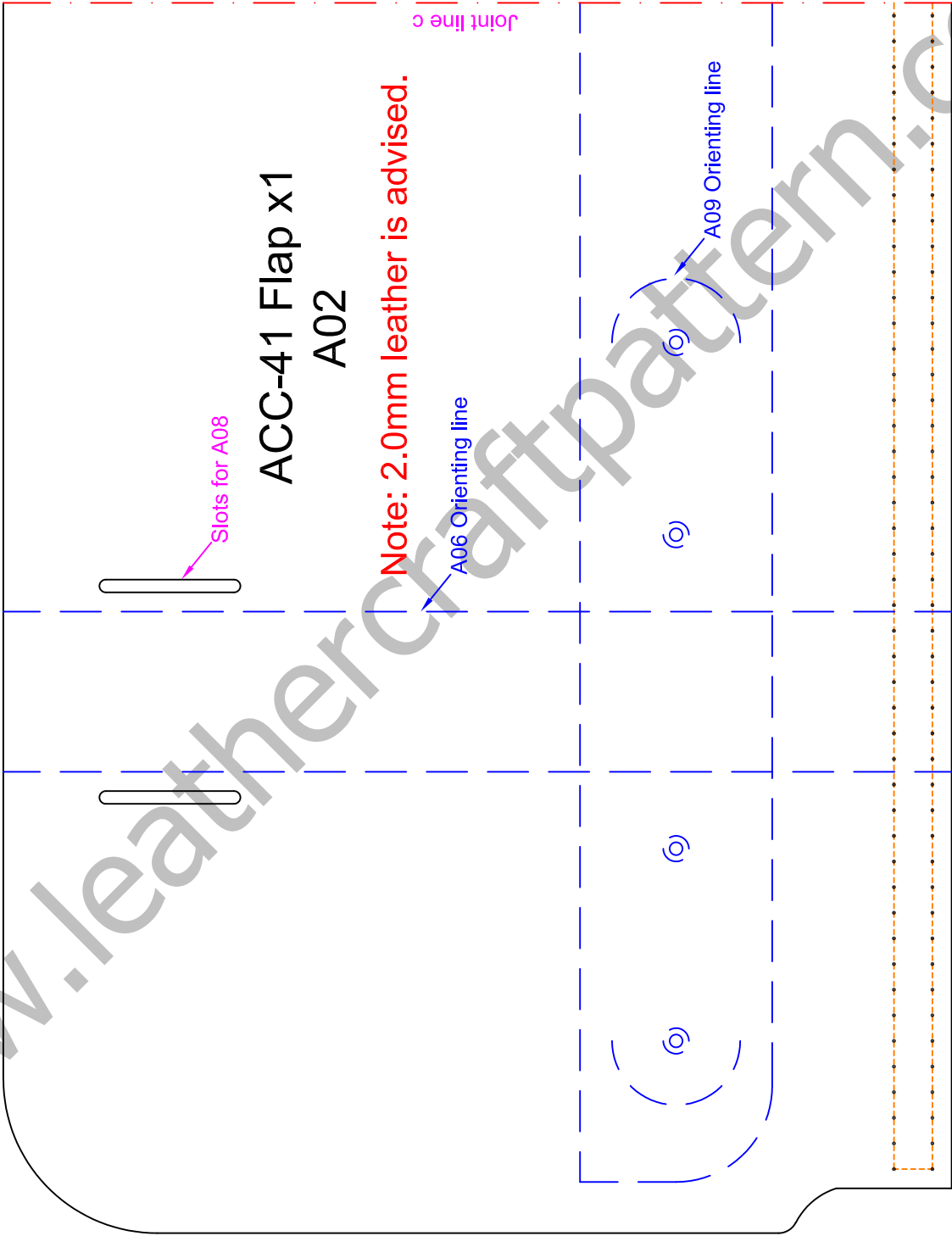
Adjust the female
lock along the
green line

b

Adjust the female
lock along the
green line







ACC-41 Back external pocket x1
A03

Note: 1.0mm leather is advised.

Joint line d



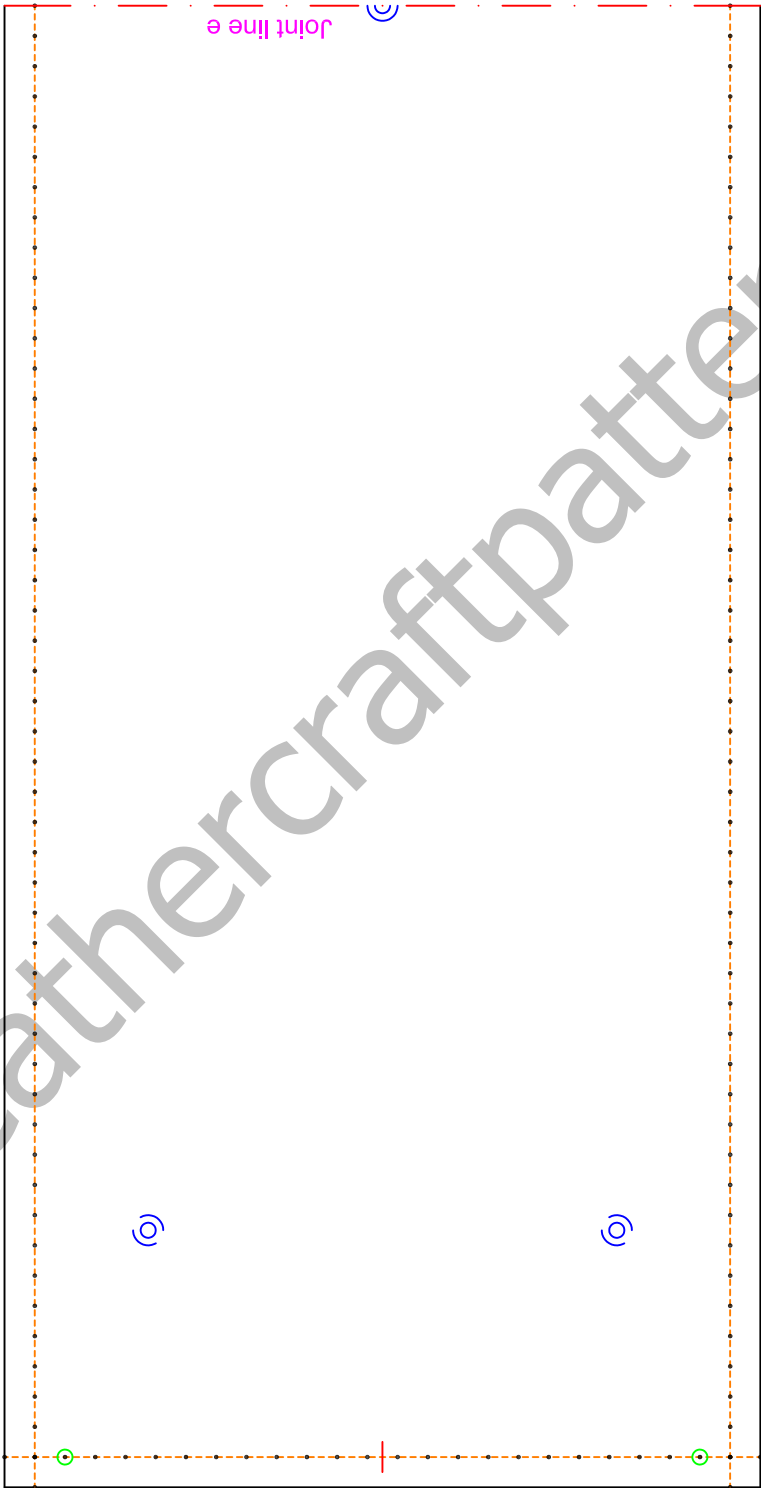
Snap

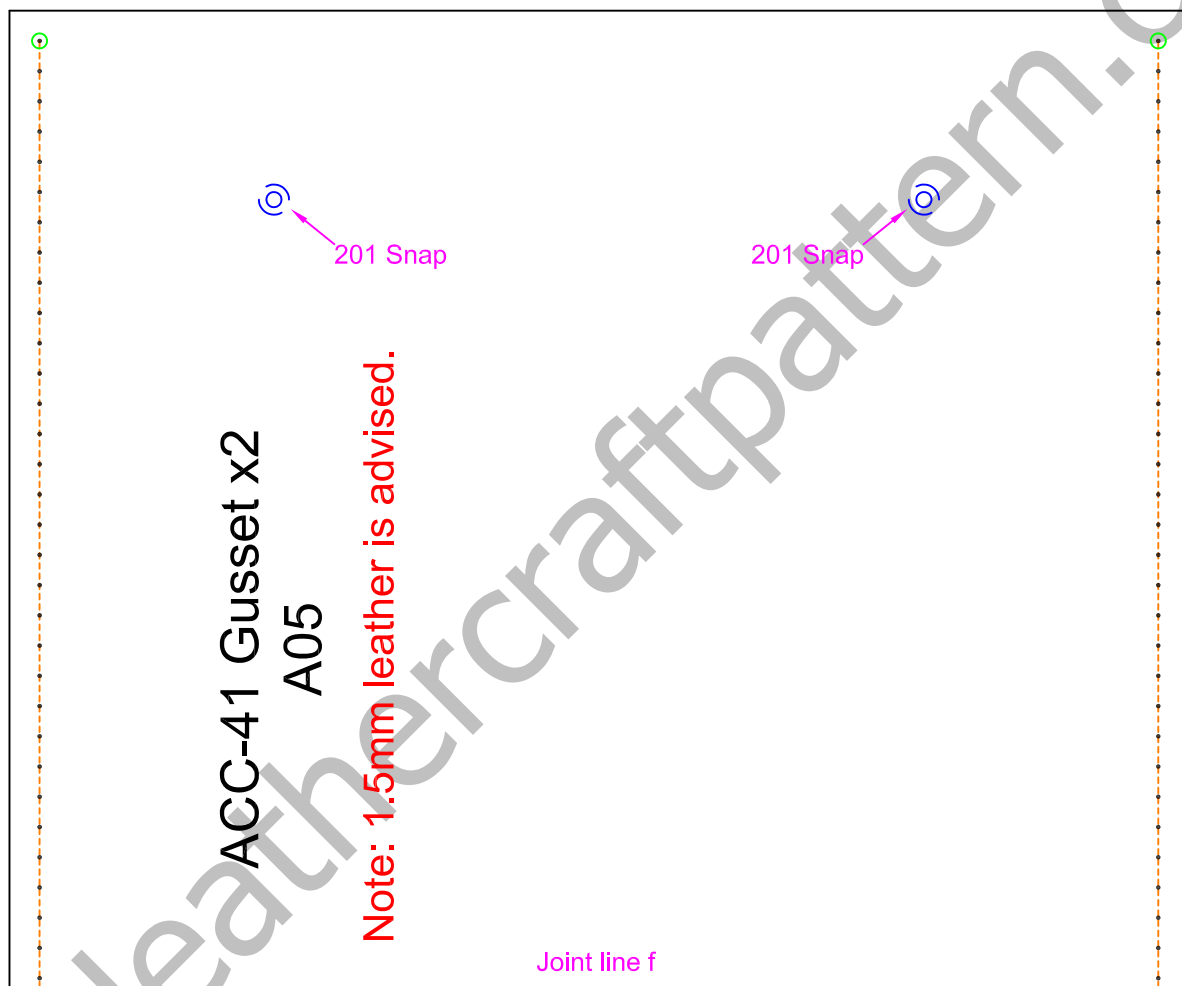
Joint line d

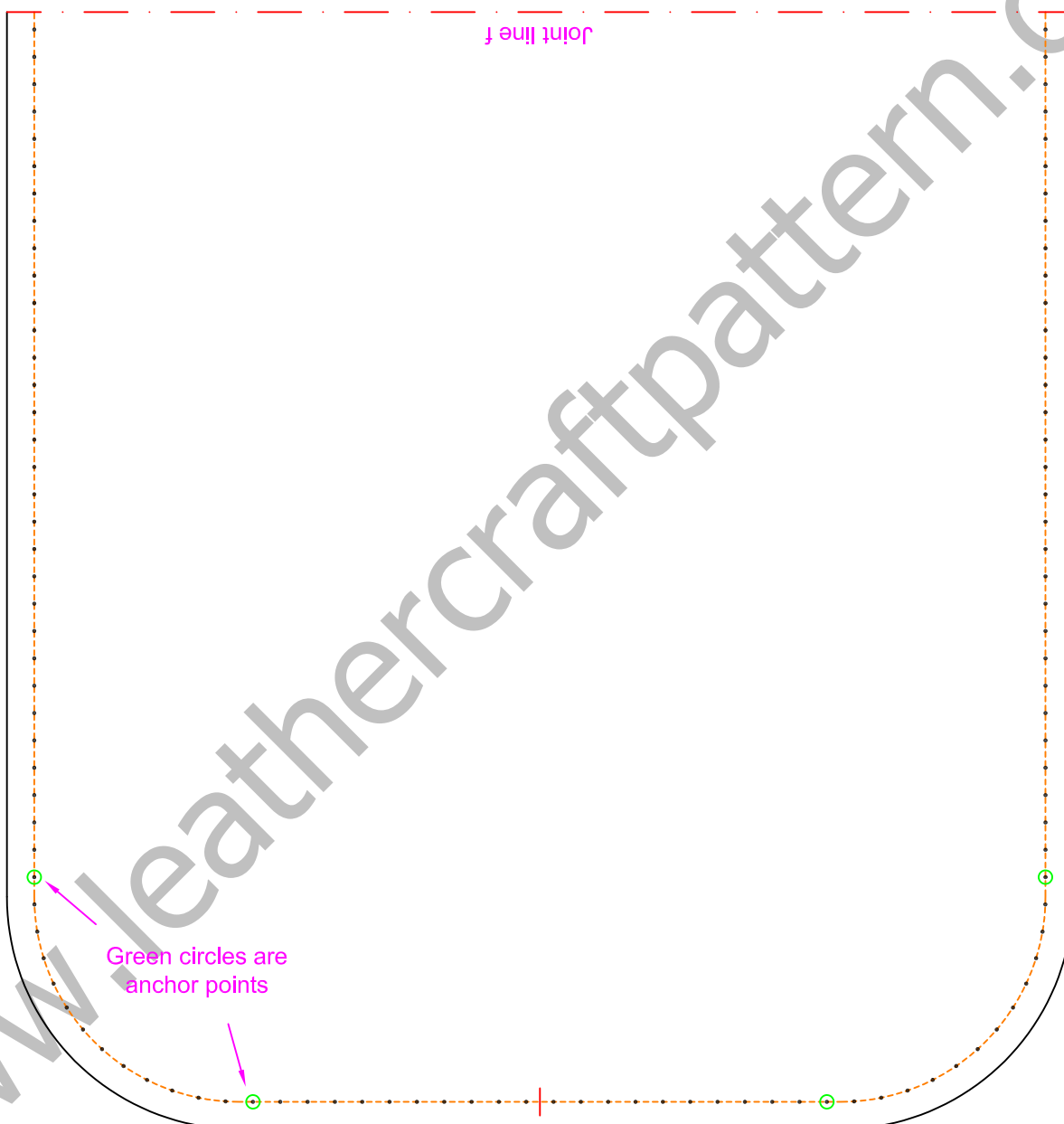
www.leathercraftpattern.com

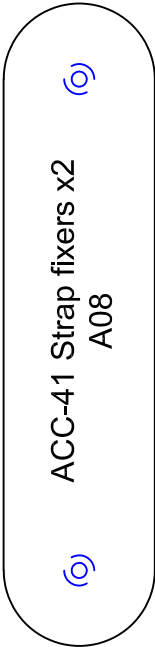
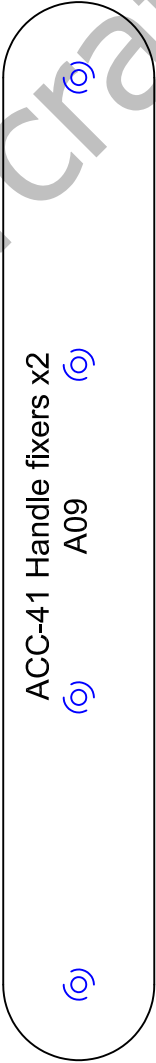
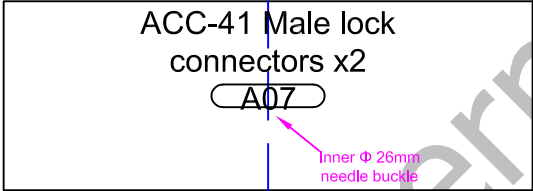
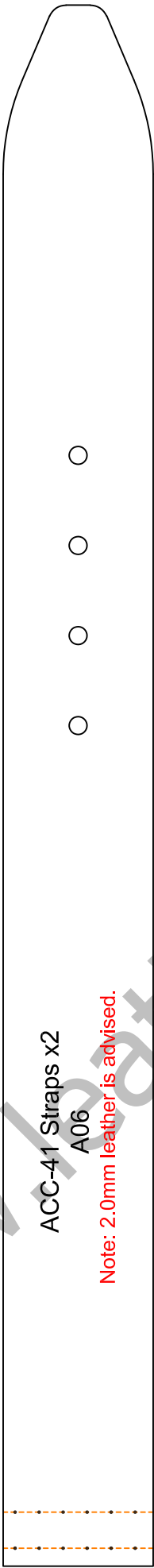


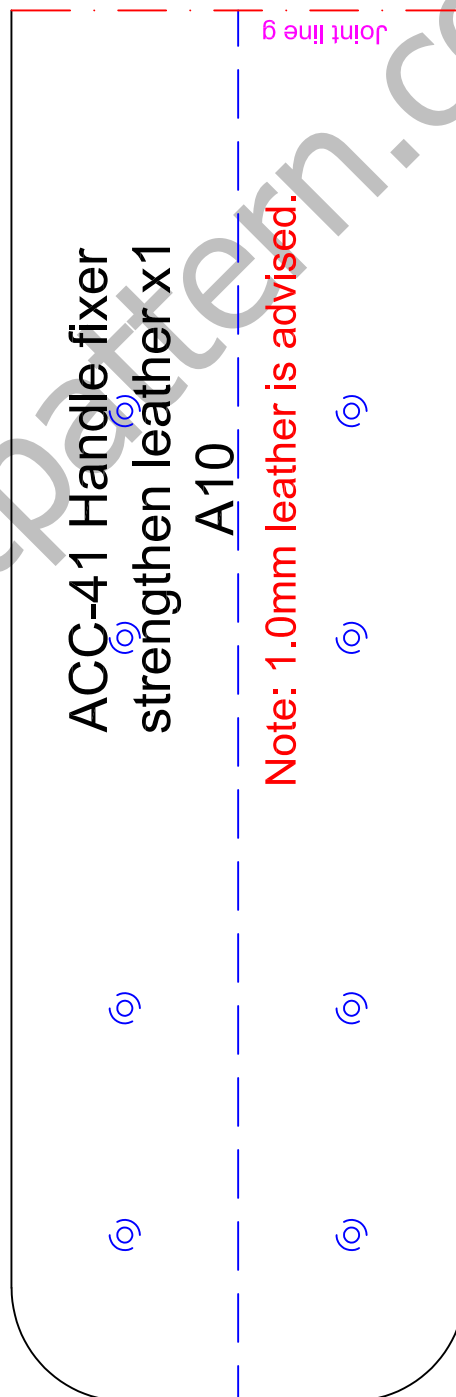
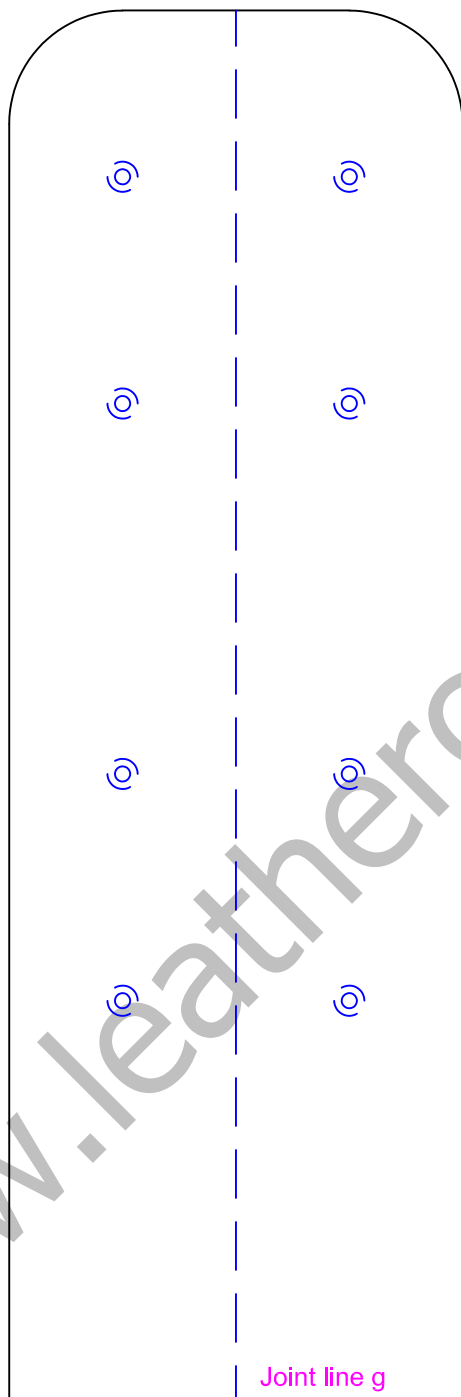


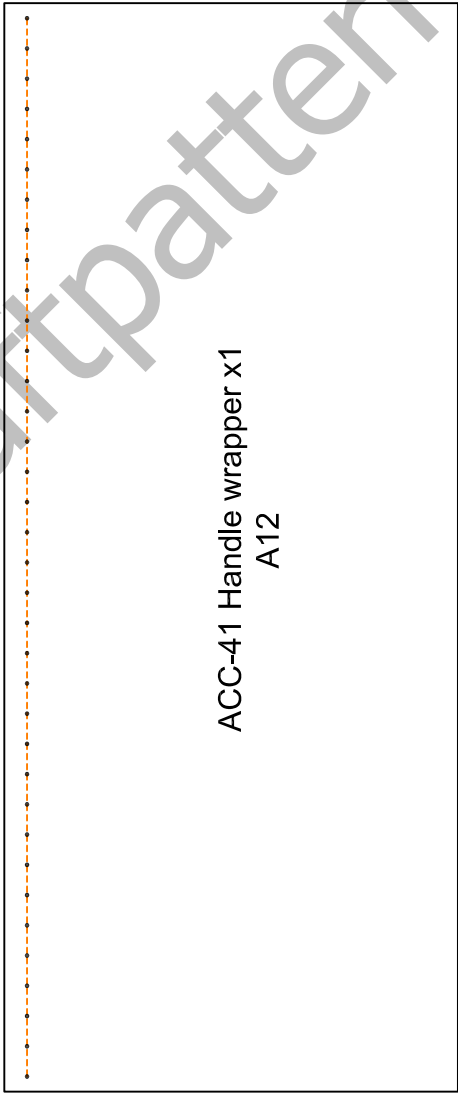


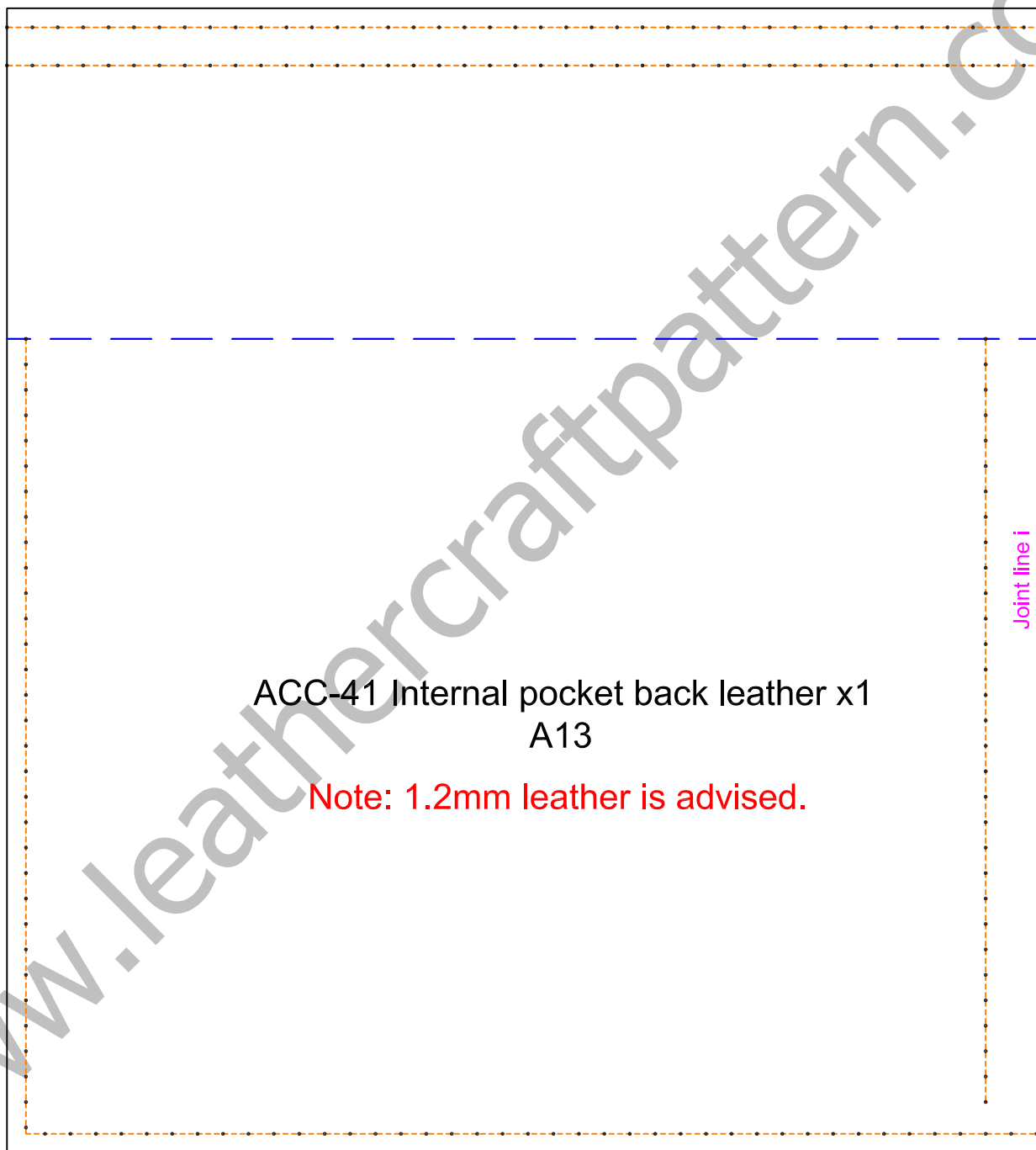


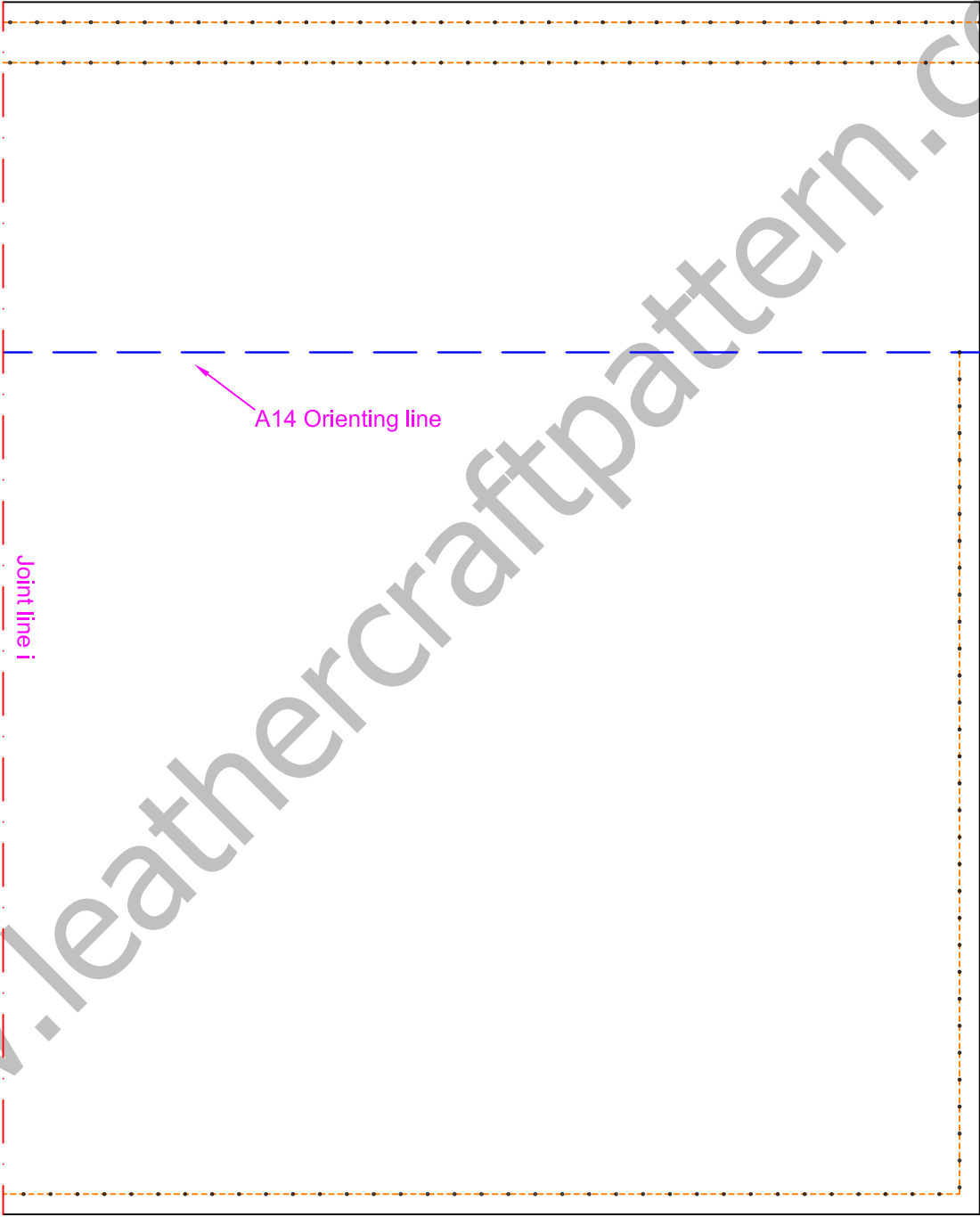












ACC-41 Internal pocket front leather x1
A14

Note: 1.2mm leather is advised.

Joint line j

