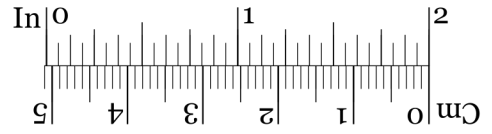


2

3

Part 1 joins here



align
pattern



4a

(III)
Part 6 joins here

Part 4 joins here

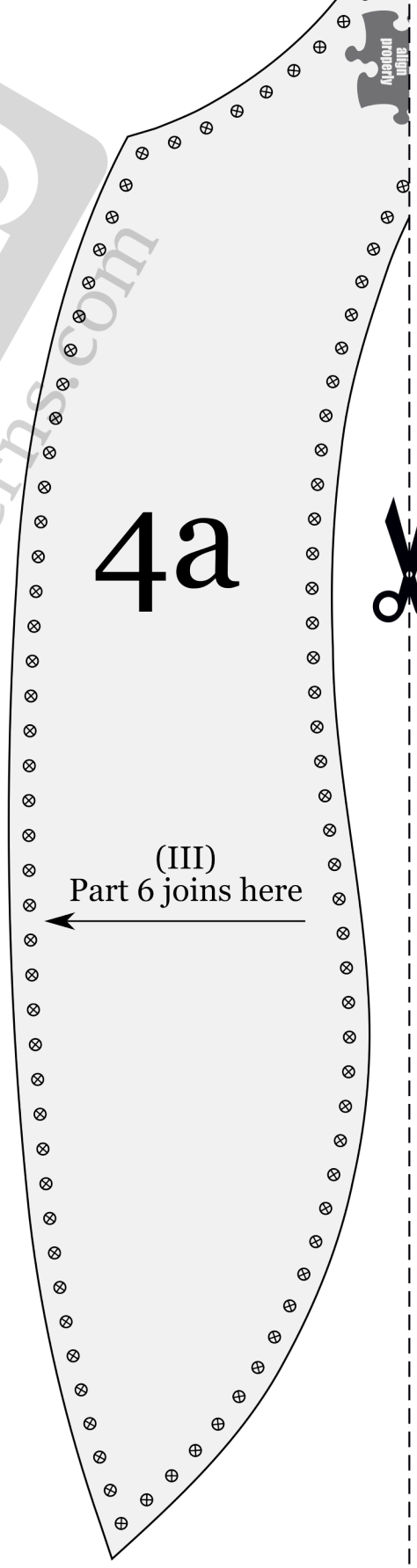
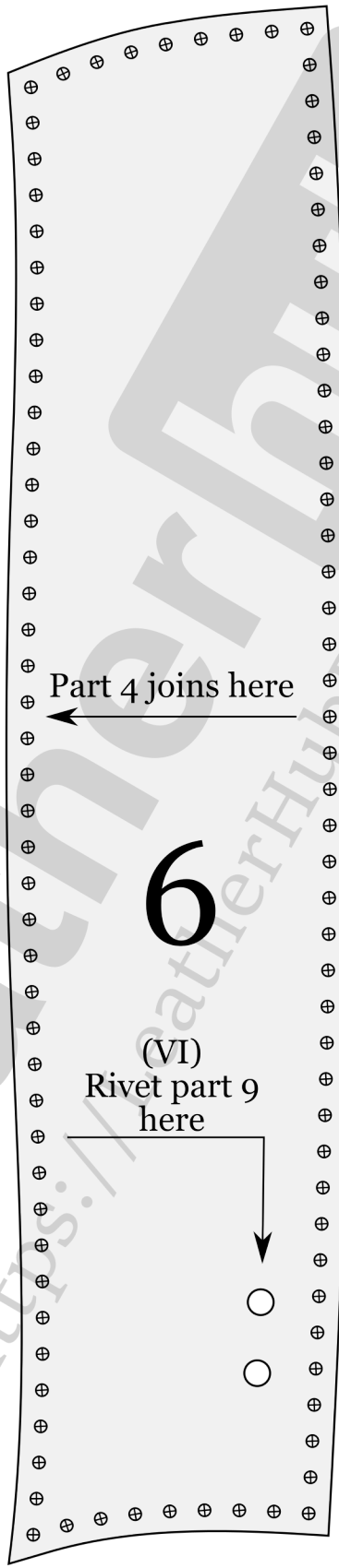
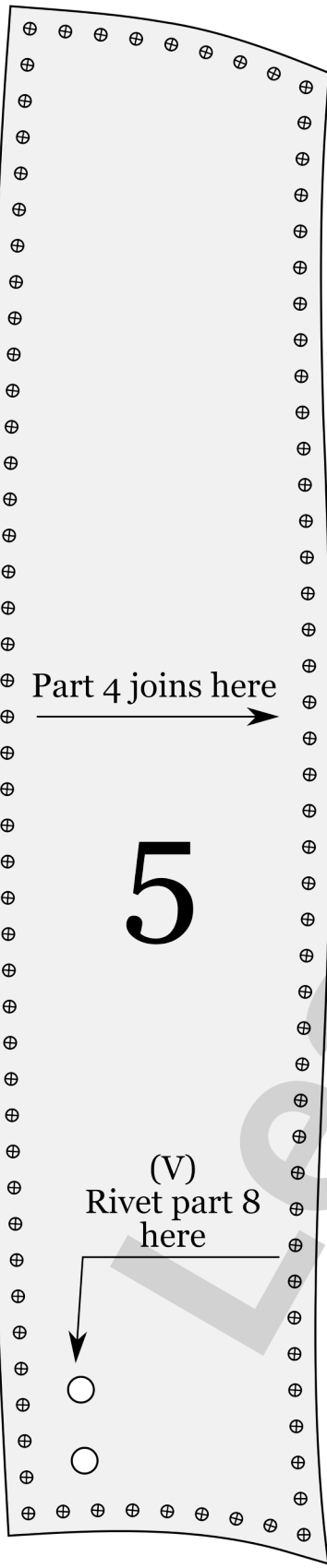
6

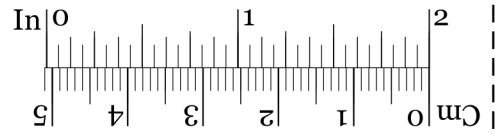
(VI)
Rivet part 9
here

Part 4 joins here

5

(V)
Rivet part 8
here





1

4b

(IV)
Part 5 joins here

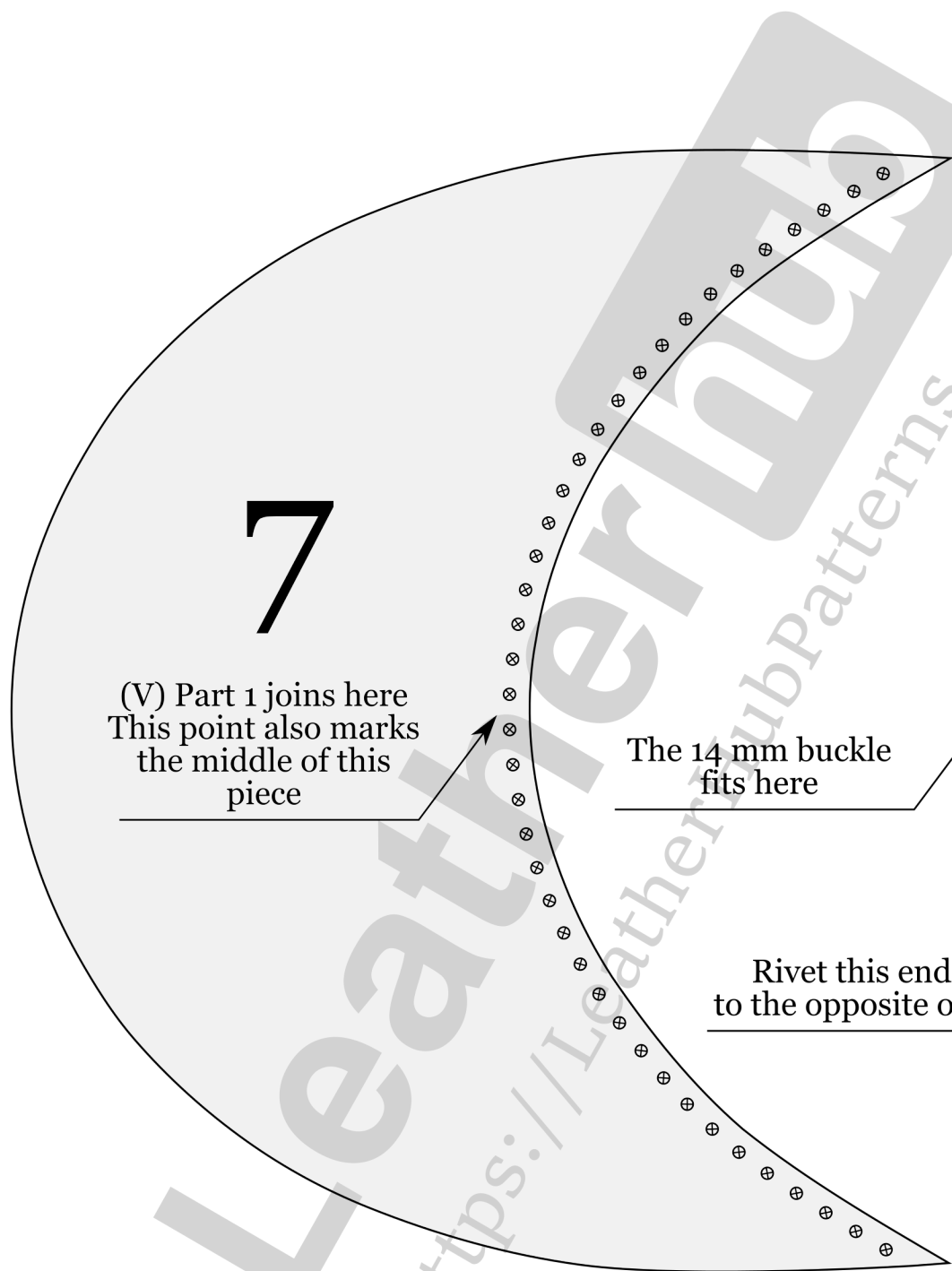
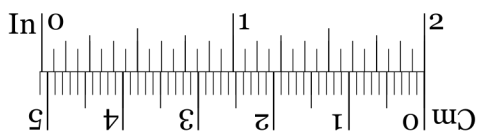
(I)
Part 2 joins here

(II)
Part 3 joins here

Middle
of the part

This shape
should

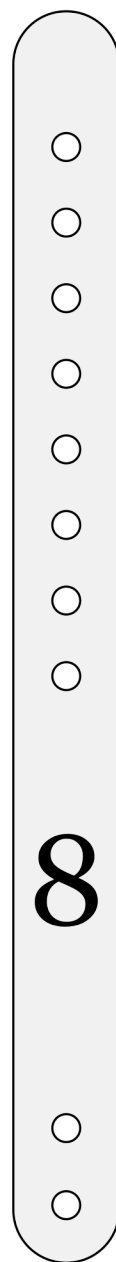
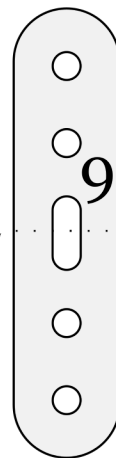




(V) Part 1 joins here
This point also marks
the middle of this
piece

The 14 mm buckle
fits here

Rivet this end
to the opposite one



M ~ 580 mm
head circumference