

ACC-187 Hermes Kelly sport making tutorial

Here is the tutorial of how to make Hermes Kelly sport, there are some tiny difference between the pattern in picture and pattern in pdf, because we had optimized the pattern after test making.

I use laser cut pattern for test making, pdf pattern you download is more detailed.

The finished measurement is about:

Hermes Kelly sport PM: 7.9" x 9.1 x 3.5" (20cm x 23cm x 9cm)

Hermes Kelly sport MM: 9.8" x 11.4" x 4.3" (25cm x 29cm x 11cm)

Hardware:

You can get the hardware kit here:

<https://www.leathercraftpattern.com/Hermes-Kelly-sport-PM-MM-hardware-kit-ACC-187>

Material: (without shoulder strap)

1.2mm leather about 5 sq.ft

1.0mm leather about 5 sq.ft

0.6mm leather about 5 sq.ft

0.6mm regenerated leather about 0.5 sq.ft

Please understand: there are so many kinds of leather in the market for choose. If the leather you use is thinner than advised data, you can add stiffener's thickness.

Skill tips:

There are some skill tips that I was asked frequently, let's introduce them to you at first.

Tip 1: Why use spunlace?

For vegetable tanned leather, we use tragacanth gum to deal with the flesh side, but for chrome tanned leather, full glue spunlace on flesh side is a better way, that will strength the leather effectively, and normally the spunlace is smaller than leather edge about 1cm, when you thin the 1cm and sew the bag, there will be very nice looking bump effect.

Tip 2: Where is the regenerated leather to be used?

Regenerated leather is used between surface and lining leather, if you use soft and thin leather to make a bag, a piece of strong regenerated leather will support it a nice look. It is also used on bottom frequently, to make the bottom strong enough. Of course, regenerated leather is smaller than edge too, normally 1cm.

Tip 3: Can I use leather to replace spunlace and regenerated leather?

Yes, if you want the stiffener more than 2mm thick, leather is the best choice. If you want a 0.3mm stiffener, anyhow, spunlace or regenerate leather is the best choice, because it is so hard to thin leather into 0.3mm

Tip 4: What's bending glue skill? Must I use bending glue tool to do this work?

Please read this instruction:

<https://www.leathercraftpattern.com/leather-bag-sewing-how-to-sew-leather-bag-bag-pattern-leathercraft-leather-tool/how-to-sew-leather-leather-sewing-skill-instruction/how-to-do-bending-glue-tutorial>

Bending glue tool will make you complete the work efficiently, but for a skilled leather worker, bending glue by hand is OK.

Tip 5: Is an electronic creaser machine is needed?

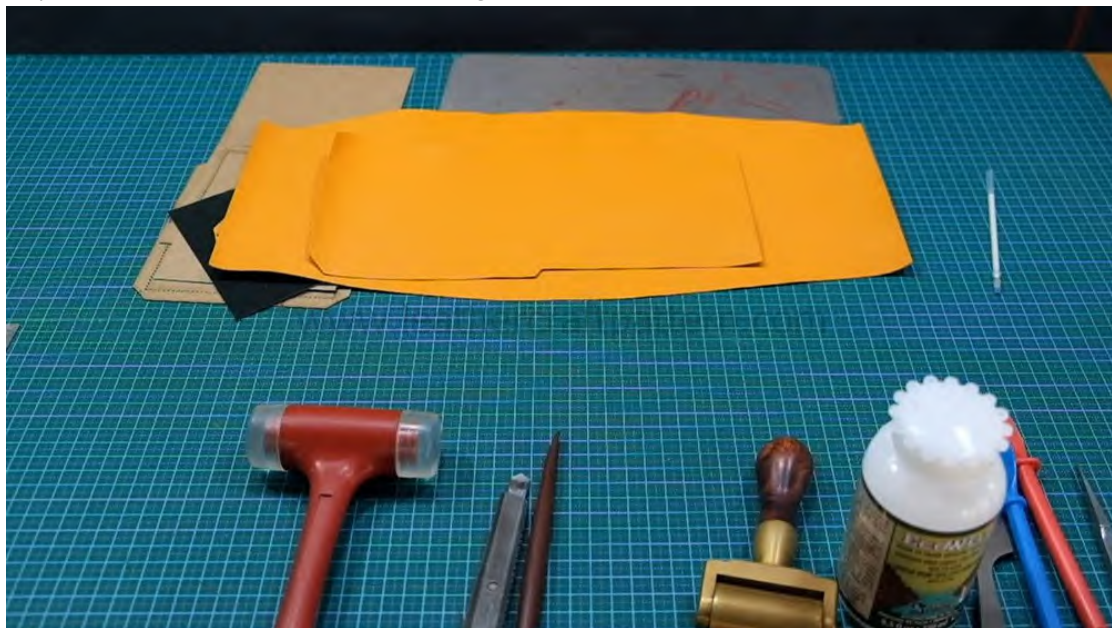
If you want your leather work looks better, you need it, I like FN2 tip very much, I use it to draw decoration lines almost everywhere.

Tutorial



(I) Make internal pocket and assemble lining

Step 1: Glue B04 on flesh side of A06 and glue B05 on flesh side of A07.

















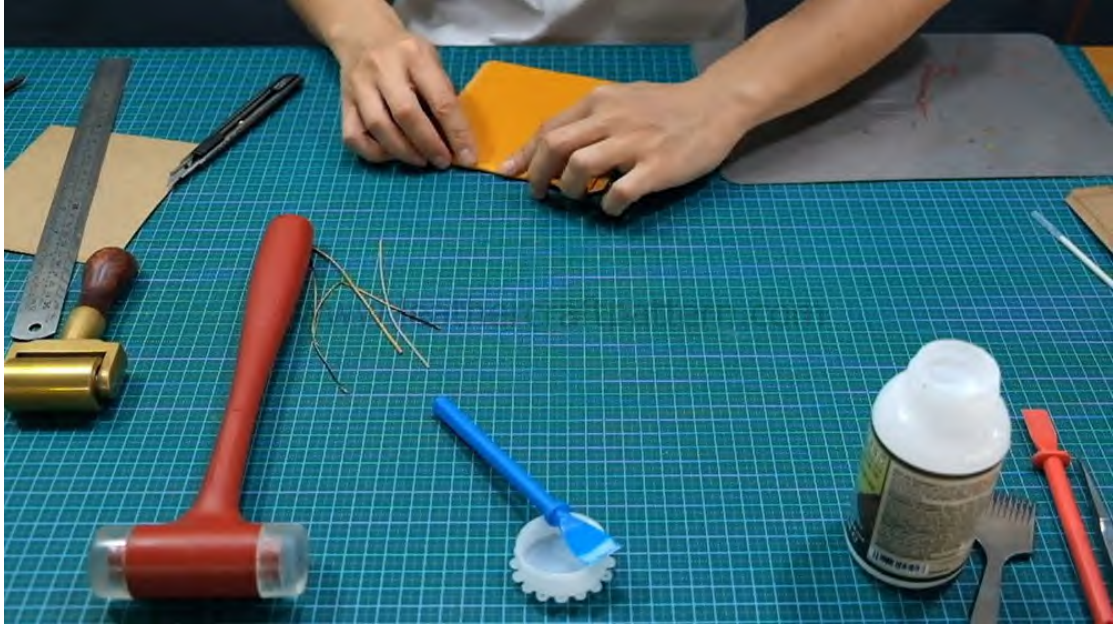
Step 2: Cut edge neatly.



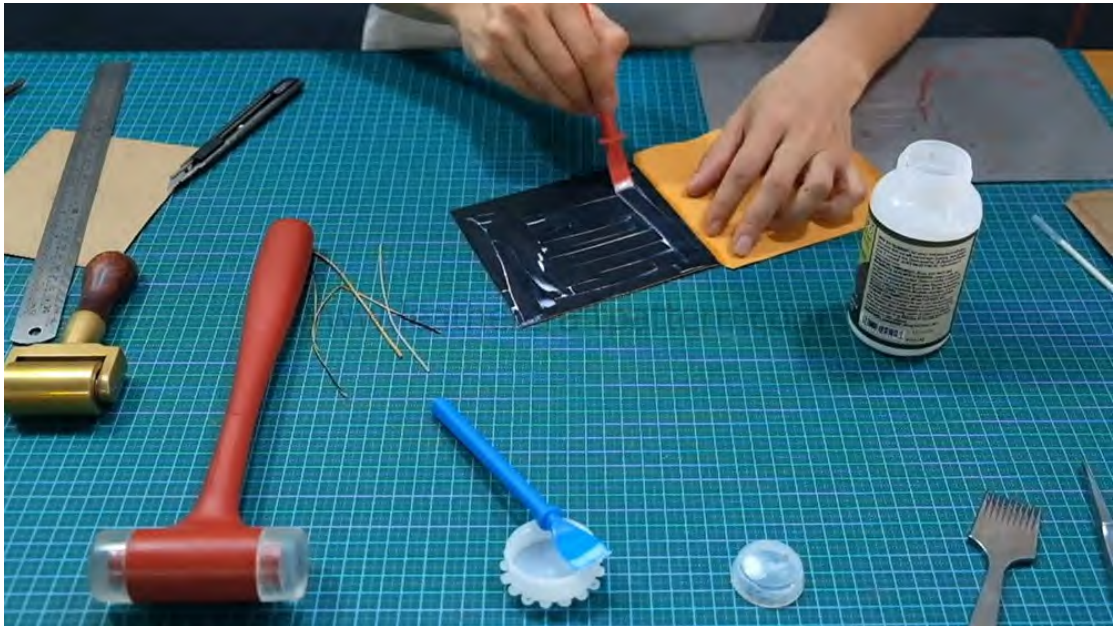








Step 3: Paint glue, fold.









Step 4: Paint glue on edge and fold edge. Sew top stitching line, which is designed as green line.















Step 5: Find orienting line of A06 and A07 on A04.





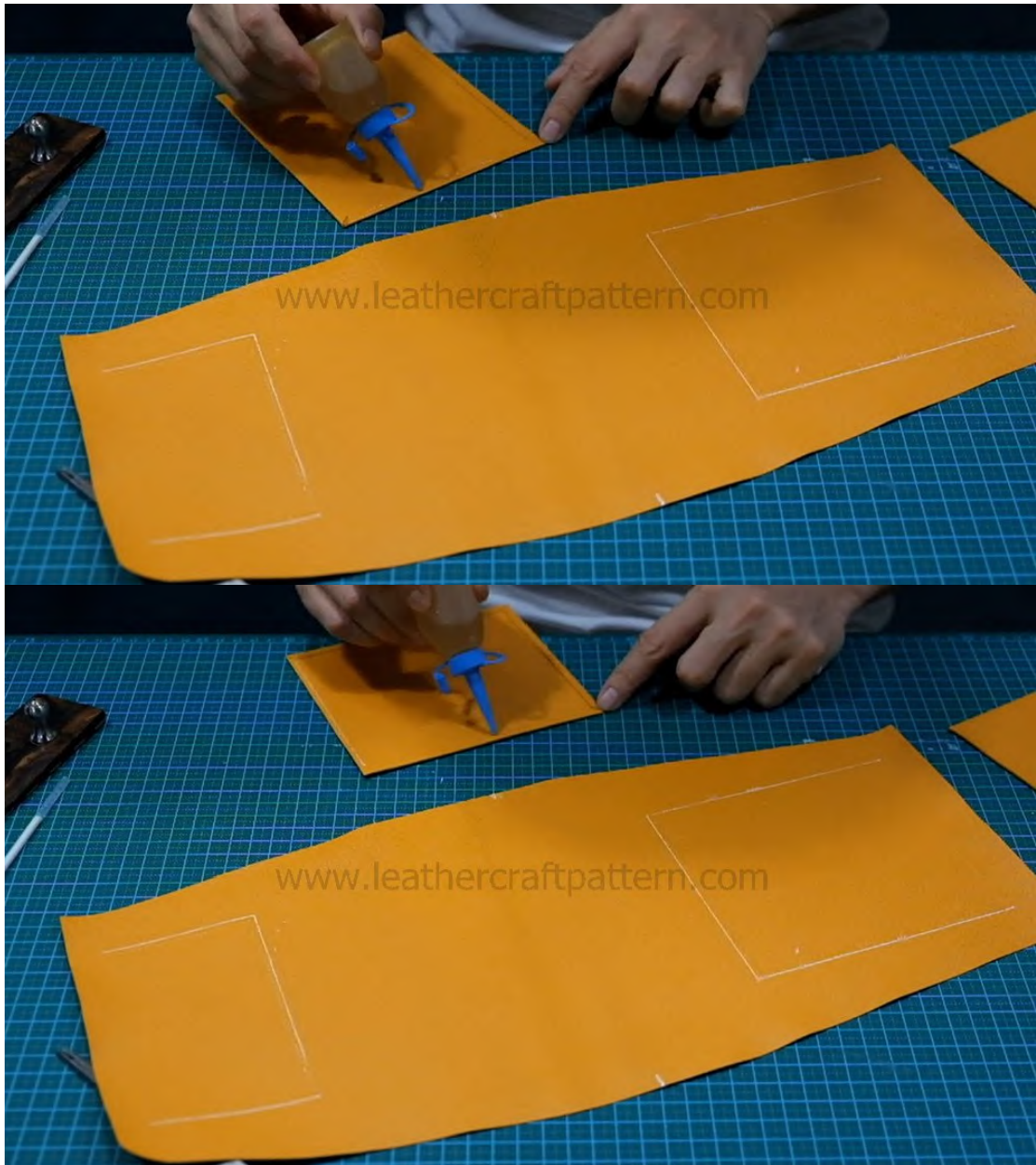
Step 6: Paint glue on 3 sides only.













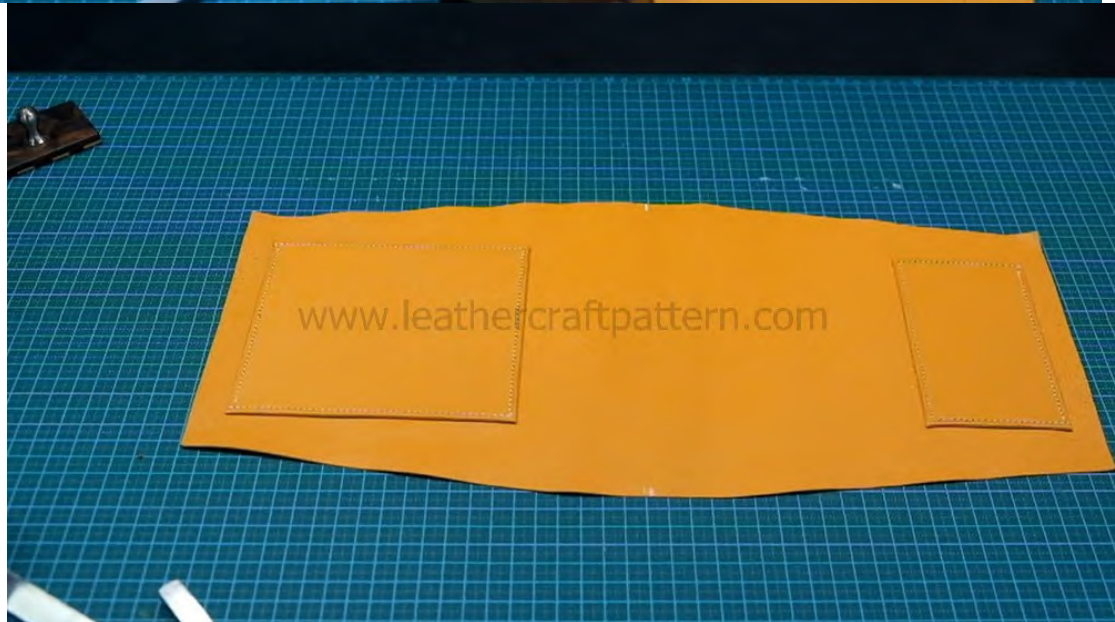
Step 7: Glue A06 and A07 on.



Step 8: Glue strengthen tape on flesh side, that will make stitching line strong enough and won't be deformed.

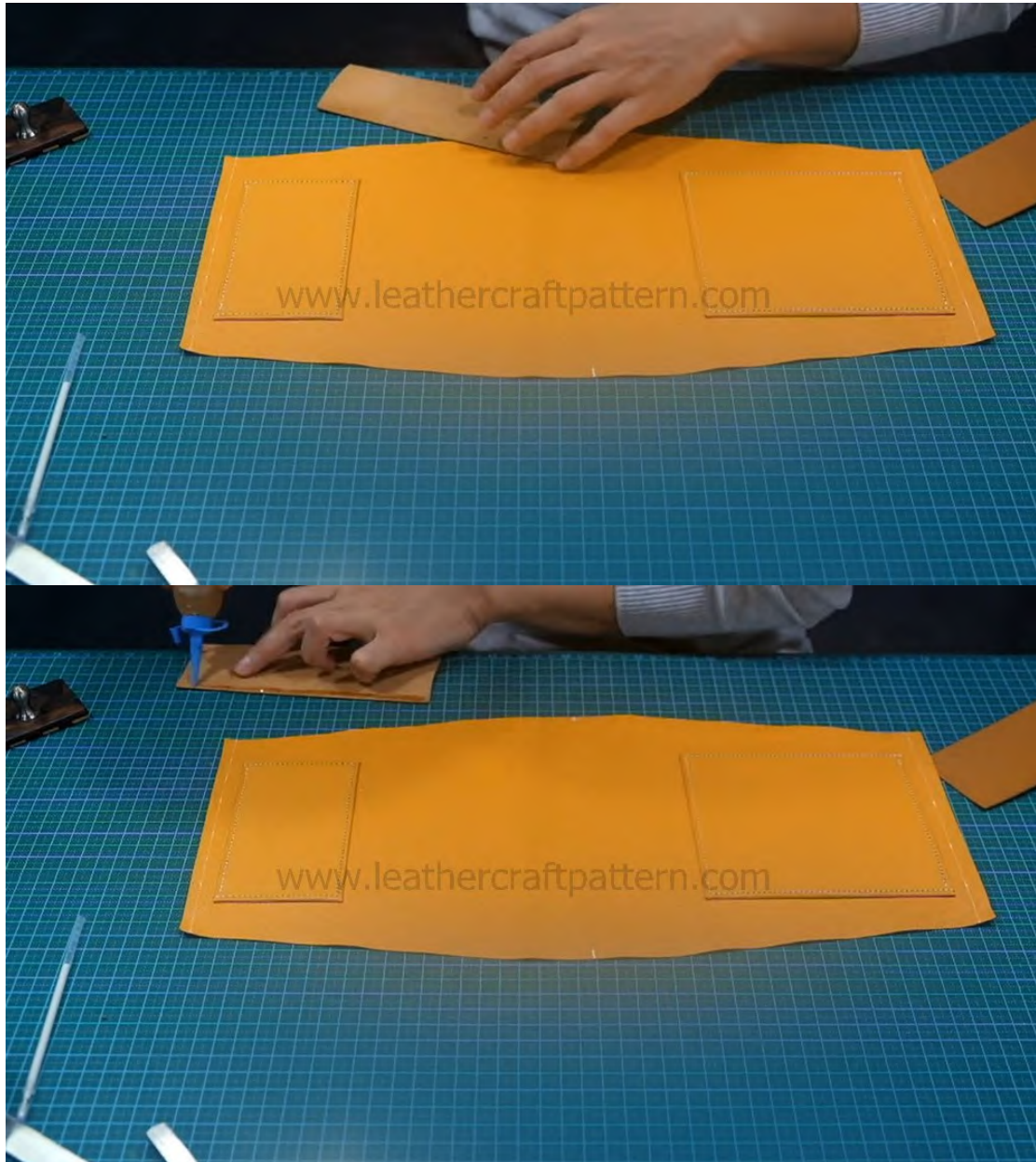


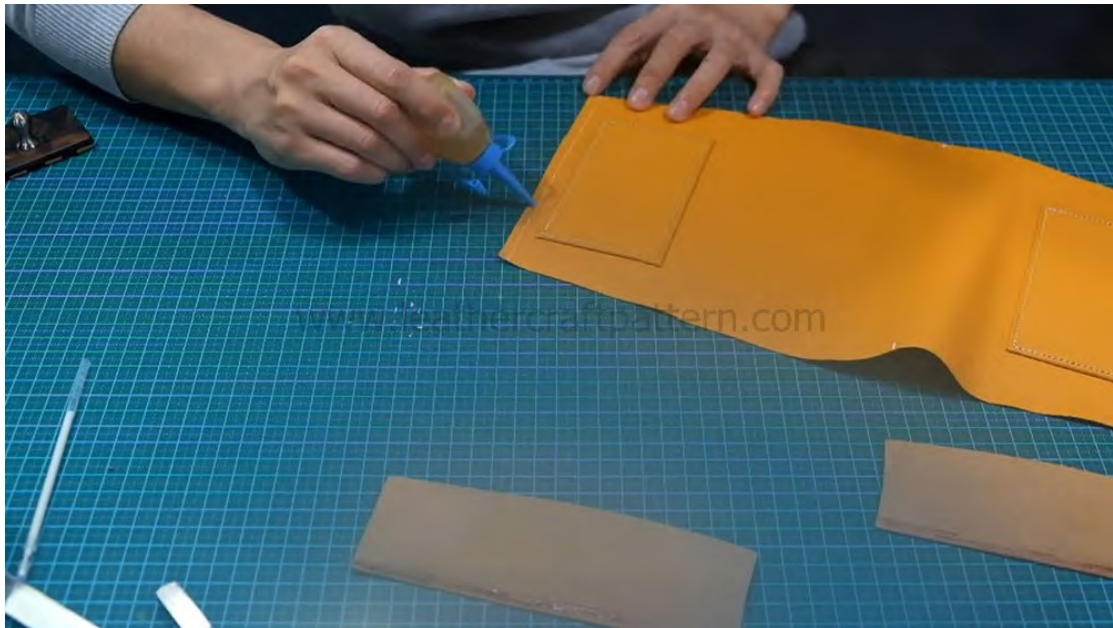
Step 9: Punch chisel holes and sew.





Step 10: Paint glue on A05 and A04 overlap area.





Step 11: Glue them together.







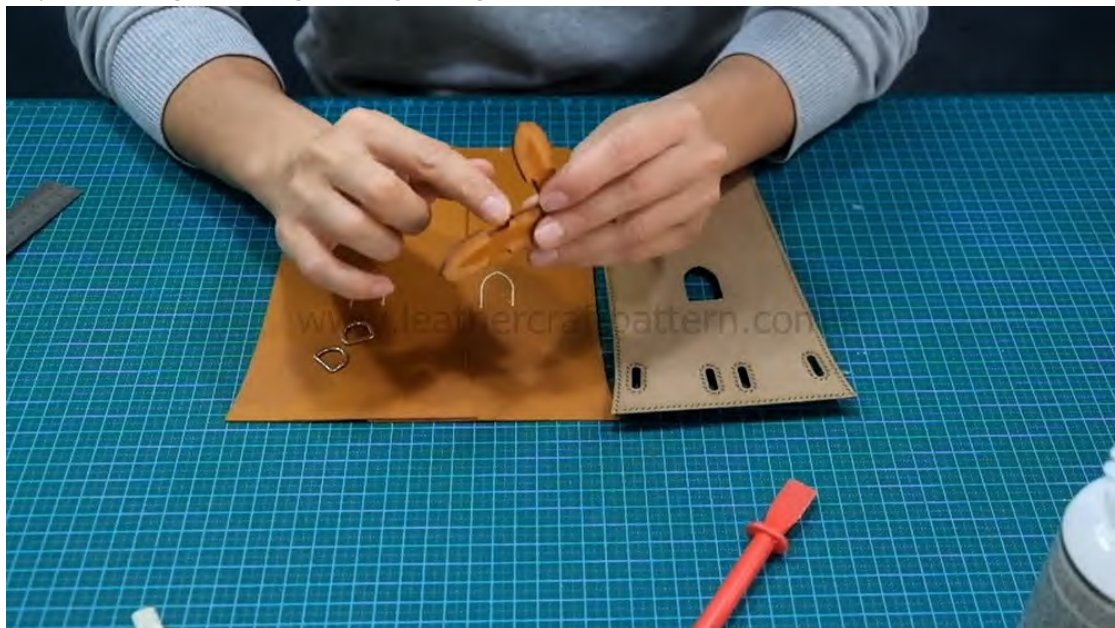
Step 12: Sew the stitching line, the lining is done.





(III) Make gusset

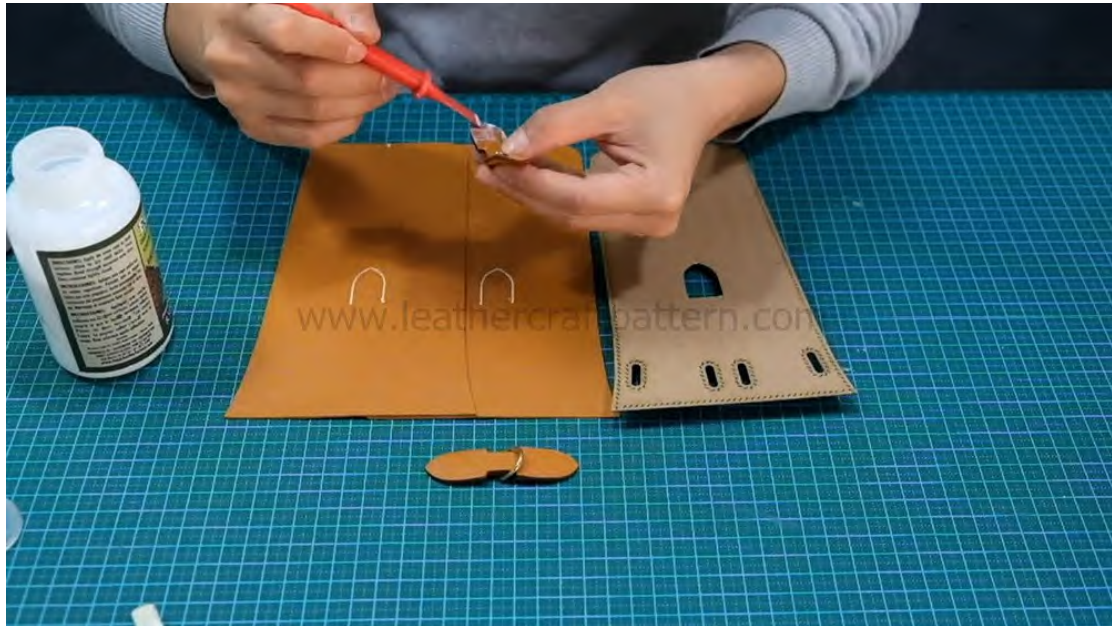
Step 1: Thin edge of A11, get D-ring through.







Step 2: Paint glue and fold, don't forget glue B07 in.



Step 3: Glue a piece of strength tape on flesh side.



Step 4: Glue and sew A11 on.







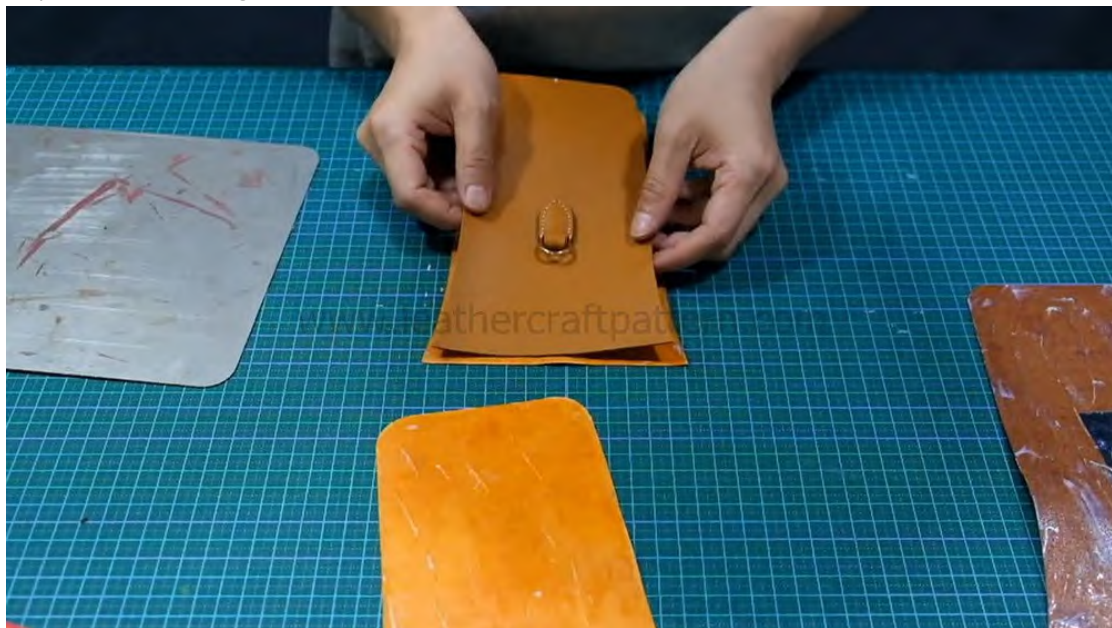


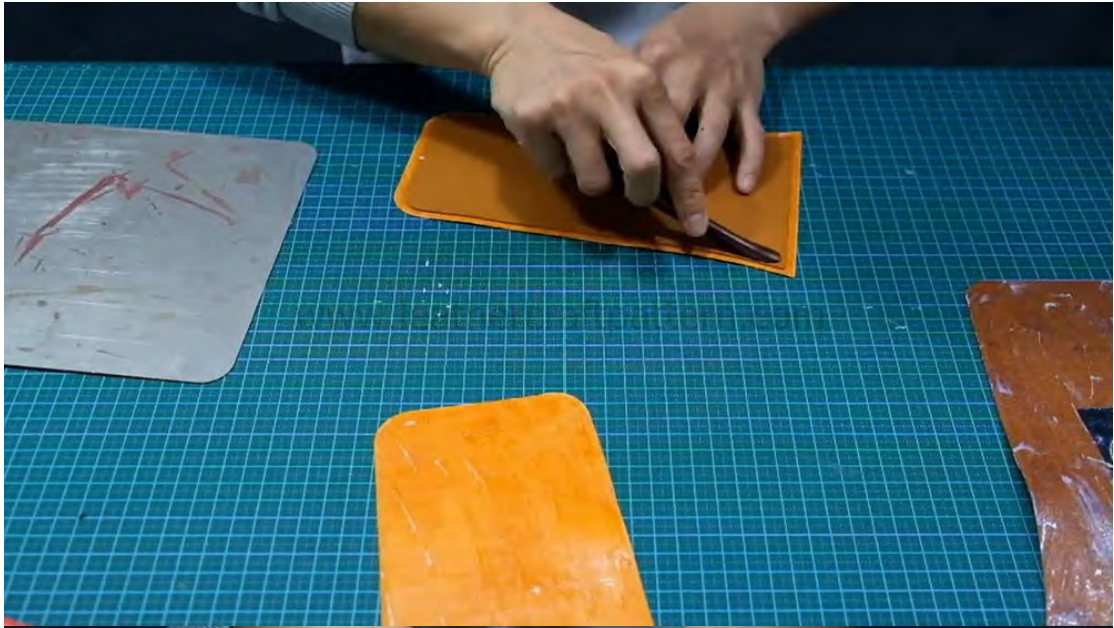
Step 5: Full paint glue on A08 and A09.





Step 6: Glue them together.











(IV) Make main body

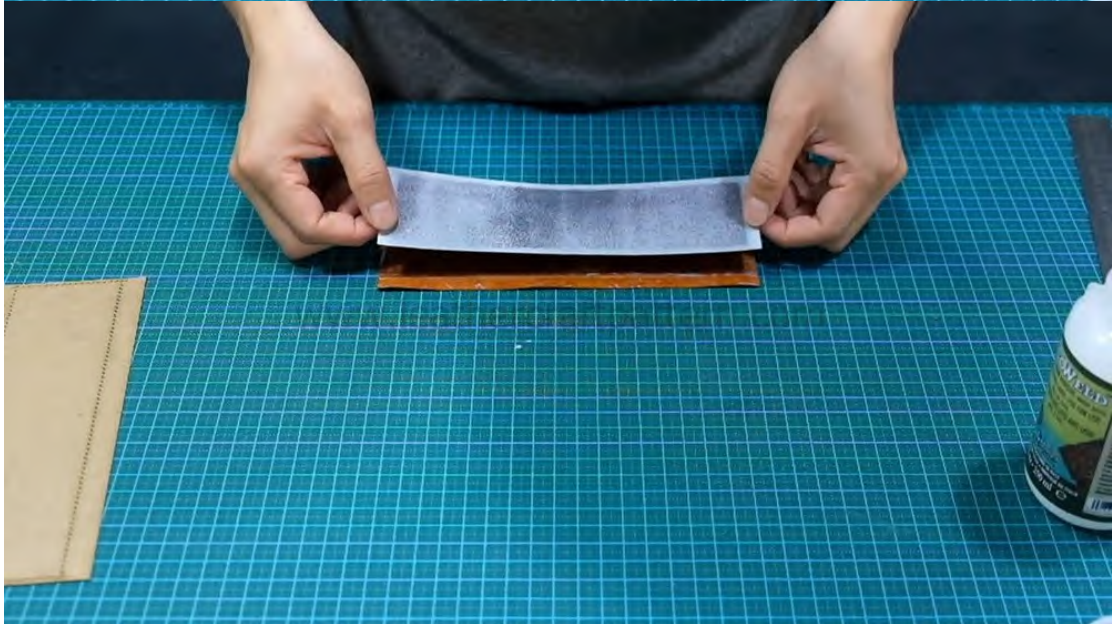
Step 1: Glue B02 and B03 together.

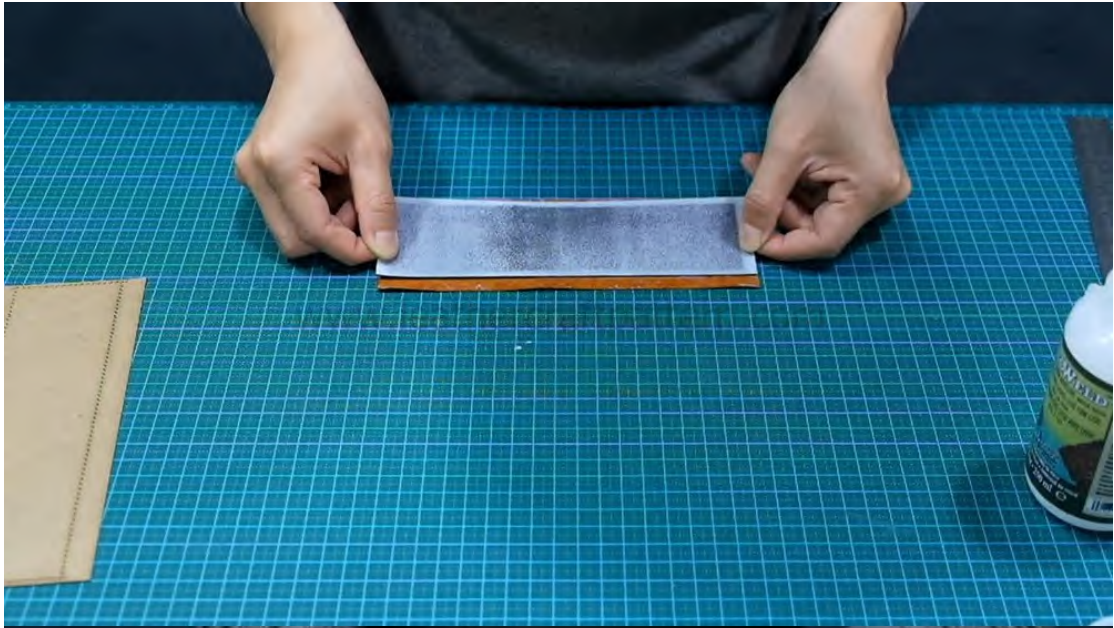


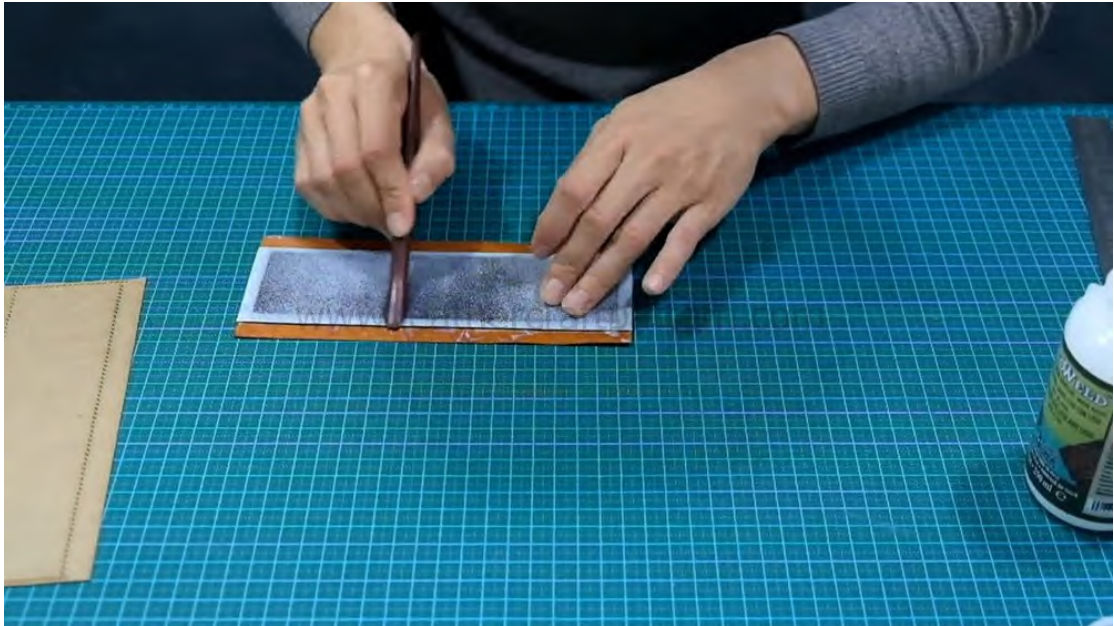














Step 2: Fold edge









Step 3: Mark orienting line on A01 and A02.







Step 4: Glue A01 and A02 stiffener on, thin edge.





Step 5: Iron decoration line on bottom.



Step 6: Punch chisel hole on A03.







Step 7: Glue A01, A02 and A03 together by align with orienting line.











Step 8: Sew.





Step 9: Glue B03 on.









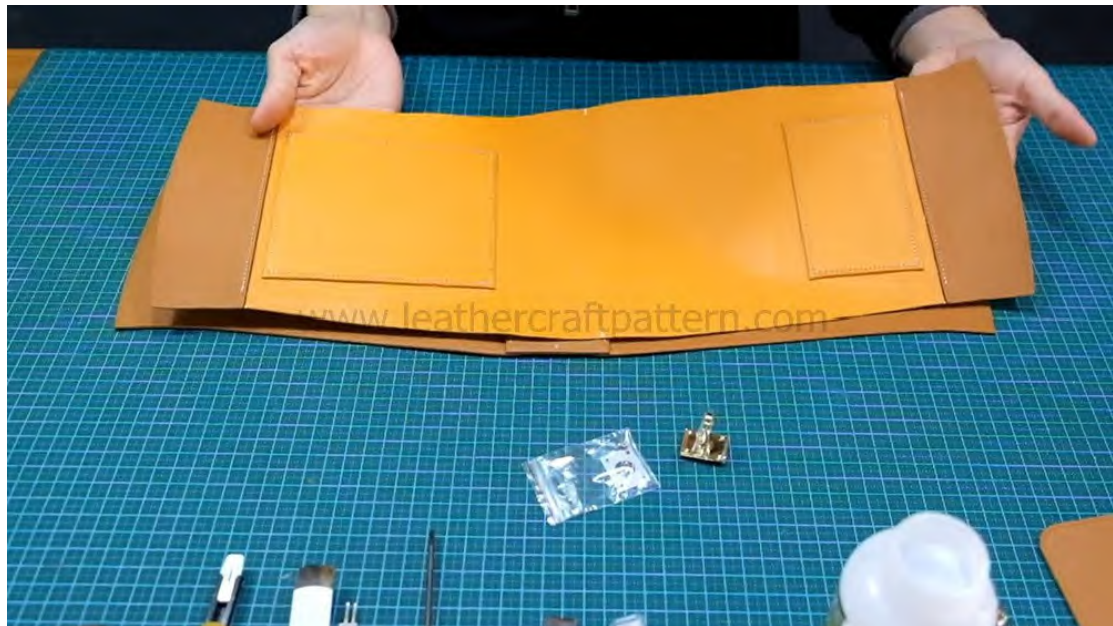
Step 10: Punch strap holes on gusset, and sew top stitching line and hole stitching line, then edge.



Step 11: Fold kink mark.



Step 12: Take out lining.





Step 13: Install twist lock.









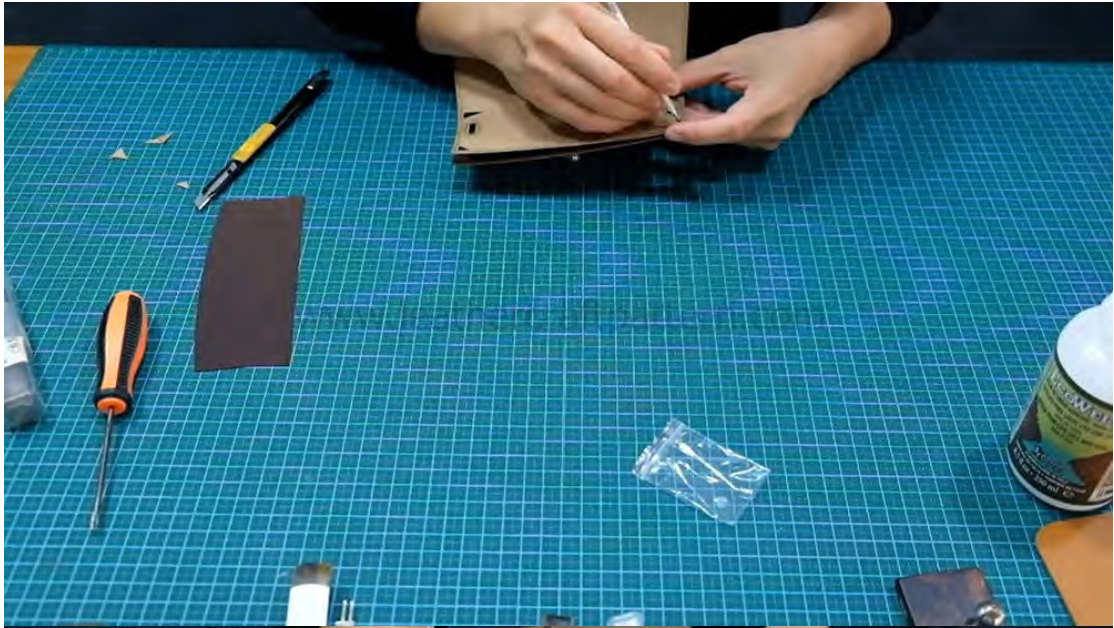




Step 14: Glue B01 on by align with its orienting line.









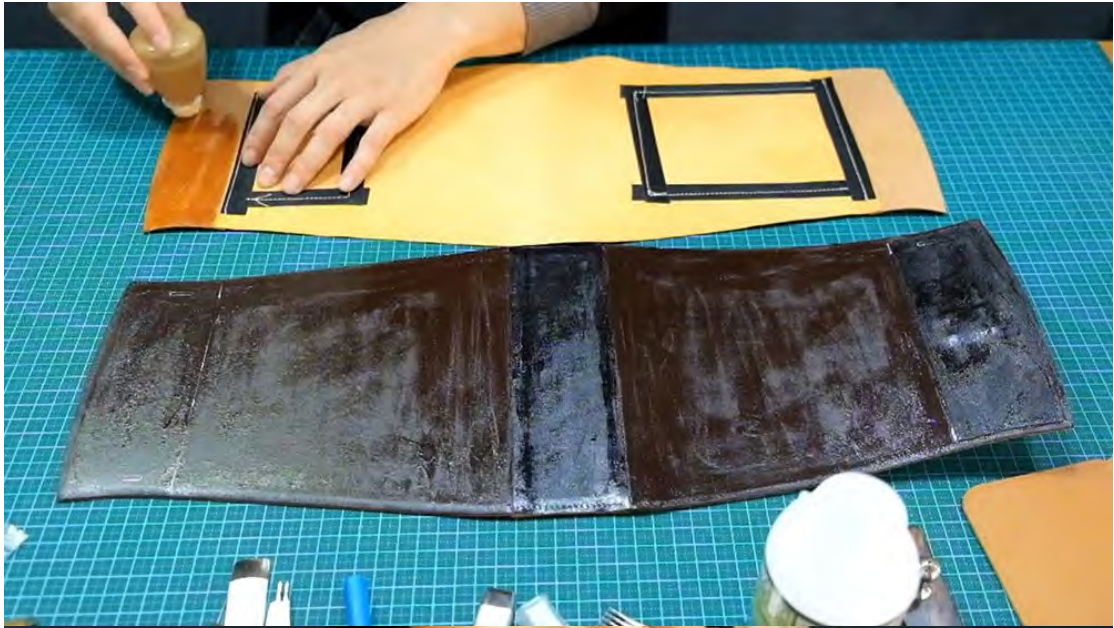


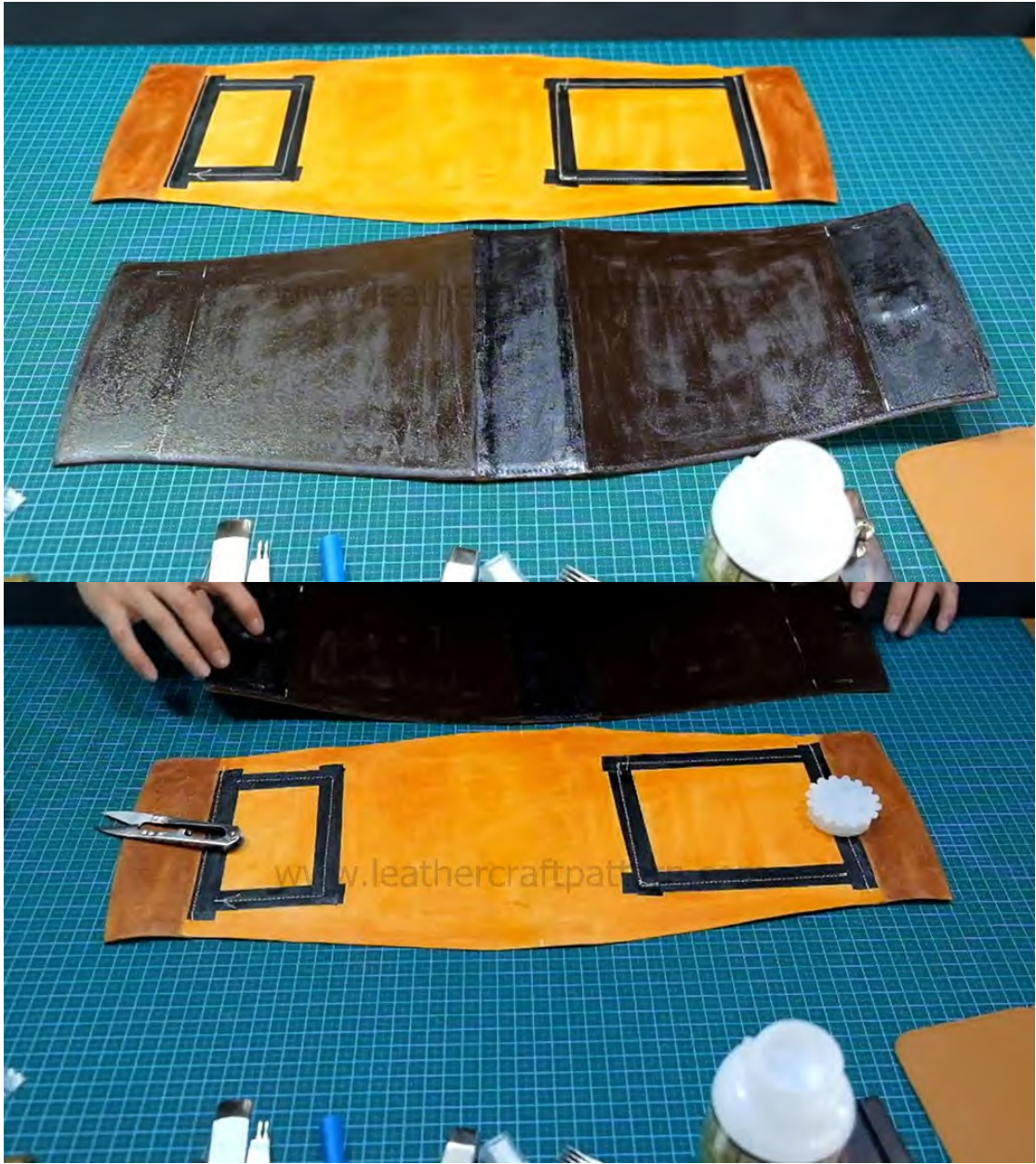




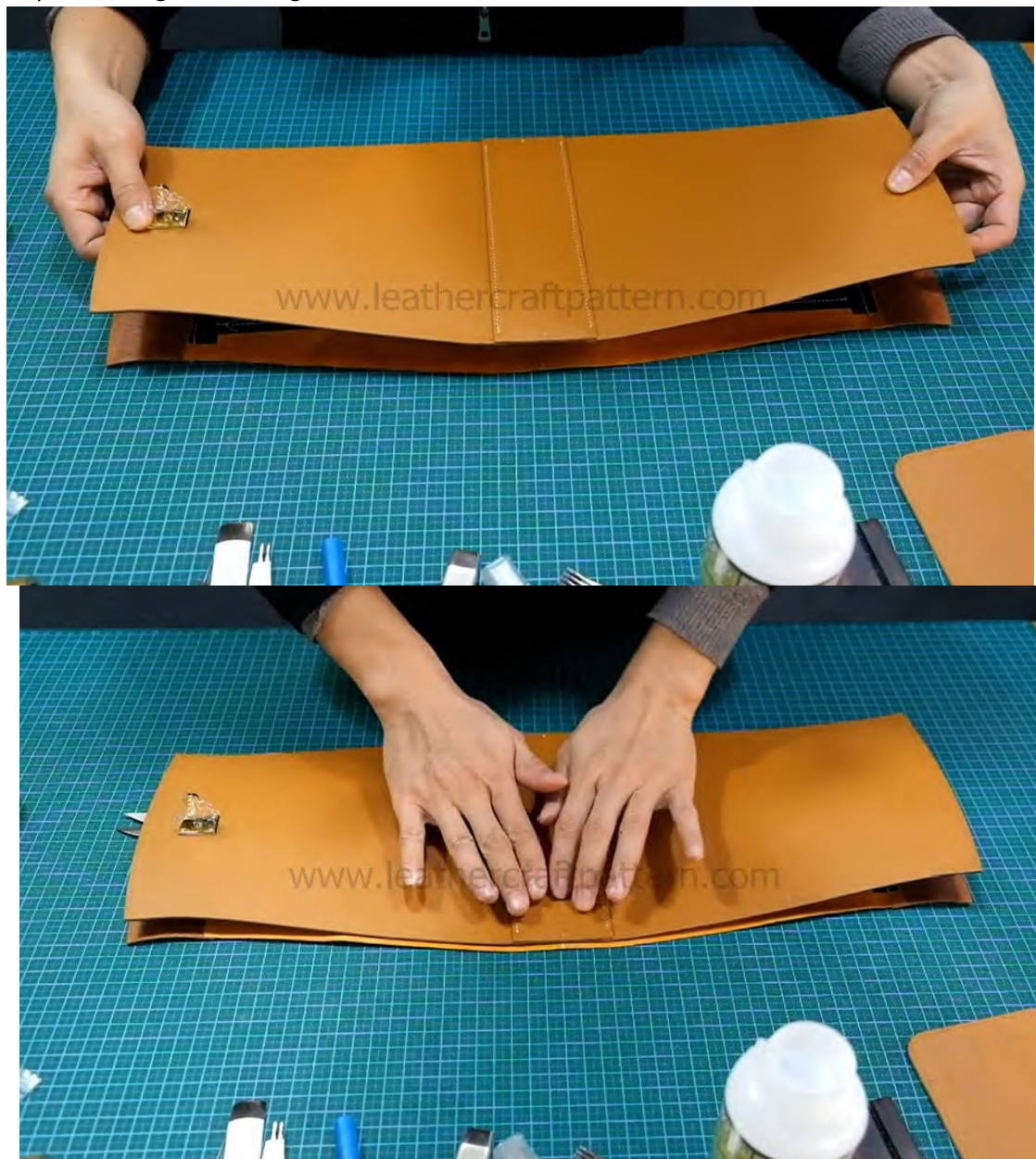
Step 15: Full paint glue on surface and lining.







Step 16: Bend glue them together.











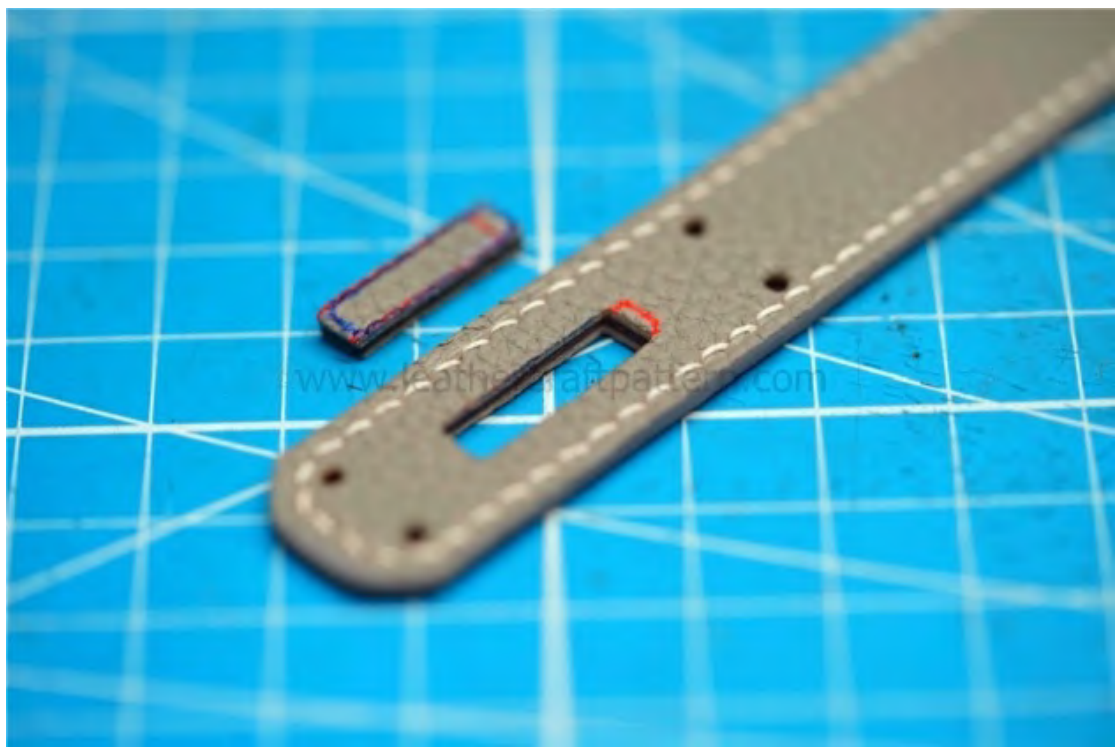
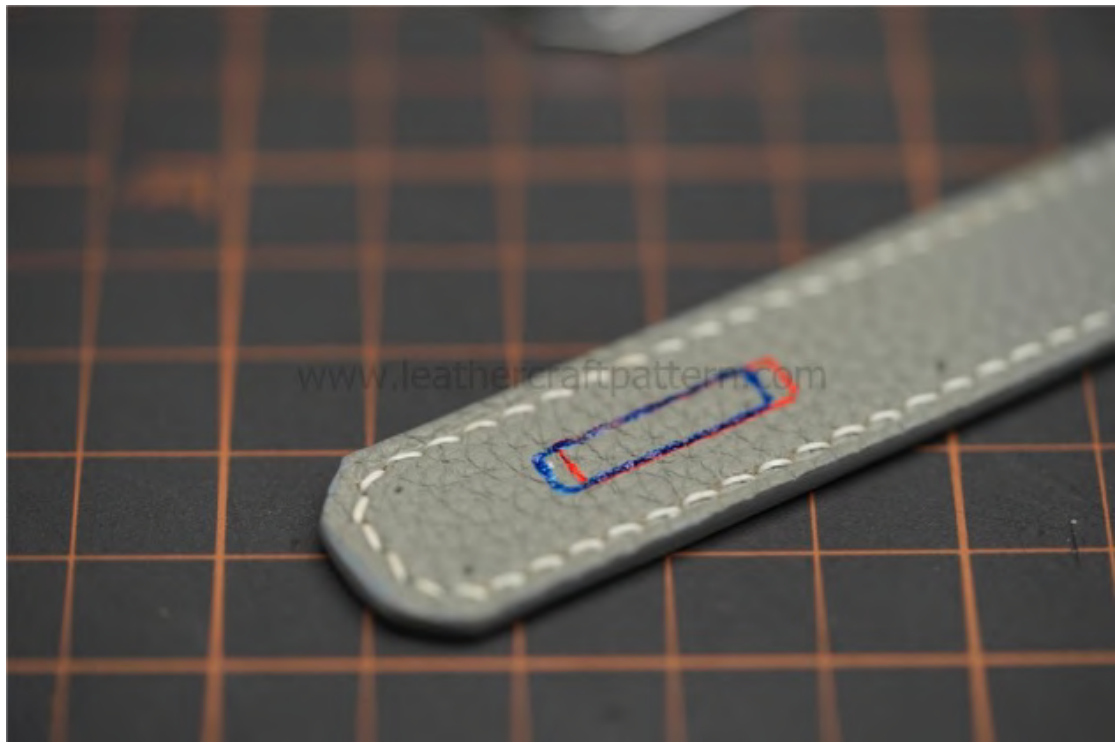
Step 17: Punch chisel holes.



Step 18: Cut exact size. Sew top stitching line, Punch back strap hole and sew strap on. Here we lost the pictures of how to make strap, so we add some pictures from ACC-198, you can take it as reference.













Step 19: Rough edge, glue and sew gusset on. Paint leather coat, done.



Here add some pictures on how to make shoulder strap as reference.









