

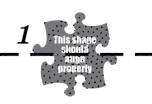
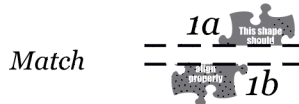
ø.8 mm



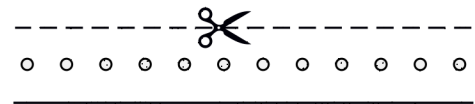
Beret pattern

*Use any type of paper but be sure you select **US Letter** as the printing format if it isn't automatically selected by default.

*For headwear patterns, measure your head from the back to the forehead to get the size you need.



Discard
Punch
Cut



Print at **100%** scale for an approximately
630 mm in head circumference or **US size 7 7/8**
and measure the ruler on the right for accuracy

Print at **98.4%** scale for an approximately
620 mm in head circumference or **US size 7 3/4**
and measure the ruler on the right for accuracy

Print at **96.8%** scale for an approximately
610 mm in head circumference or **US size 7 5/8**
and measure the ruler on the right for accuracy

Print at **95.2%** scale for an approximately
600 mm in head circumference or **US size 7 1/2**
and measure the ruler on the right for accuracy

Print at **93.5%** scale for an approximately
590 mm in head circumference or **US size 7 3/8**
and measure the ruler on the right for accuracy

Print at **91.9%** scale for an approximately
580 mm in head circumference or **US size 7 1/4**
and measure the ruler on the right for accuracy

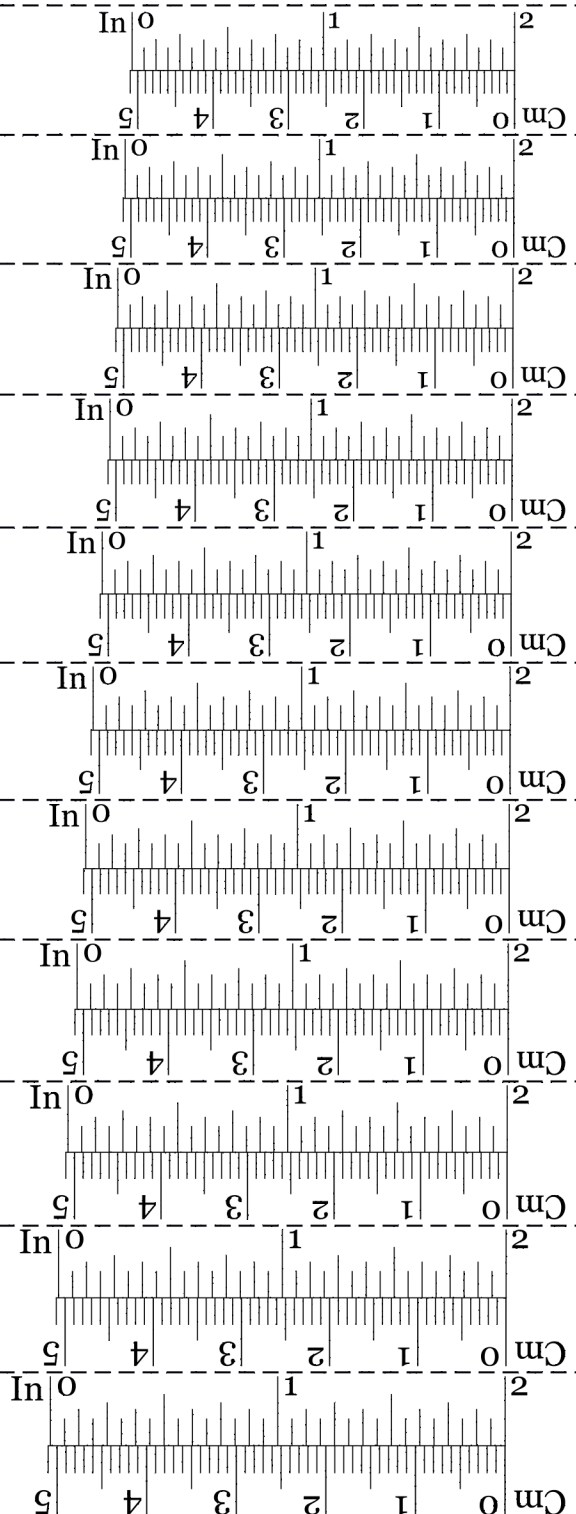
Print at **90.3%** scale for an approximately
570 mm in head circumference or **US size 7 1/8**
and measure the ruler on the right for accuracy

Print at **88.7%** scale for an approximately
560 mm in head circumference or **US size 7**
and measure this ruler for accuracy

Print at **87%** scale for an approximately
550 mm in head circumference or **US size 6 7/8**
and measure this ruler for accuracy

Print at **85.5%** scale for an approximately
540 mm in head circumference or **US size 6 3/4**
and measure this ruler for accuracy

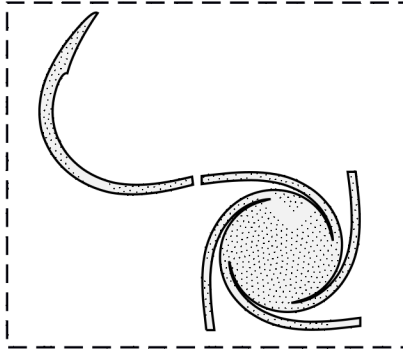
Print at **84.1%** scale for an approximately
530 mm in head circumference or **US size 6 5/8**
and measure this ruler for accuracy





1a

Parts 2, 3 join part 1 as shown in the figure below



1c

Use cross stitching to assemble
each part except the sweatband
(part 4) which folds around
parts 2 and 3 at the end
and needs to be saddle stitched.

1b

1d

This shape
should

This shape
should

1e

1g

1f

4a

4c



1h

1i

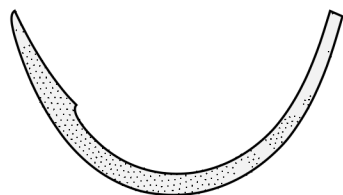
4b

4d





How part 2 should look like
when properly assembled



Part 4 fits here

1

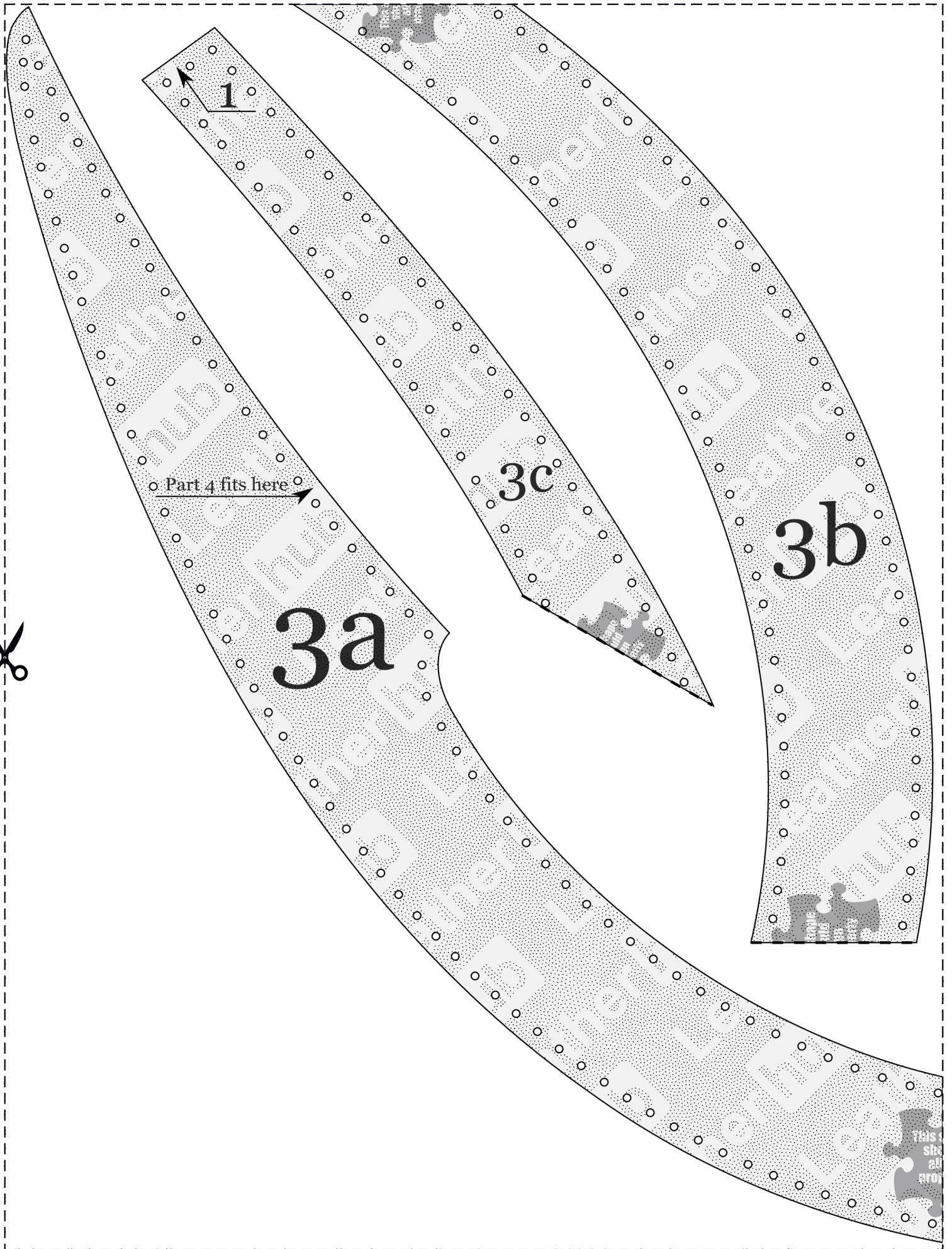
2c

2b

2a

The star fits here

This
sh
at
pro



1

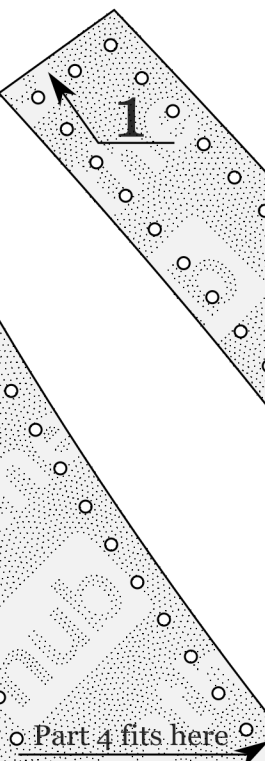
Part 4 fits here

3c

3b

3a

This is
sh
at
pro



o Part 4 fits here

3a

3c

3b

This is
sh
at
pro

