



CREATIVE AWL
**ORIGINAL
PATTERNS**



Candy Bag



 **YouTube**
VIDEO TUTORIAL

**EASY TO
PRINT**
PDF >>>>
PATTERN

LET'S GO!

1



PRINT THE PATTERN

- Open your pattern in Adobe Acrobat Reader.
Set up options of your printer on A4 paper with 0 margins.
- Every page has a measure - check does it fit.
- Every printed page **MUST HAVE** a border around!
If doesn't - move paper left/ right and print again

2



FOLLOW VIDEO INSTRUCTIONS

- Video tutorial:
<https://youtu.be/ueldEwa7GZc>
- Cutting patterns:
https://www.youtube.com/watch?v=2TNUI_TIk64

3



GIVE A SMILE TO OTHER PEOPLE !

- Give a ready product to you family or friend.
Give them a smile :)))
- Also Check www.CreativeAwl.com for more patterns

4



JOIN OUR FB GROUP

- Go there to share your work. Also get more DIY&ideas.
We will support you & answer all questions.

YOU NEED

MATERIALS

2.1 SQFT (0.2 SQM) LEATHER (PREFERABLE ABOUT 5 OZ), WE USED VEG TANNED

- **THREAD**
- **WE USED A MIX YELLOW AND RED DYE FOR PUMPKIN**

TOOLS

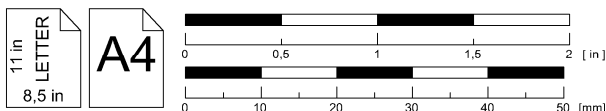
- **SHARP KNIFE**
- **1.2 - 1.5 MM HOLE PUNCHER / PRICKING IRONS OR AWL**
- **HAMMER**
- **2 NEEDLES**
- **PAPER TAPE**
- **A HOME PRINTER**

SHARE YOUR WORK

<https://www.facebook.com/groups/CreativeAwlPatterns>

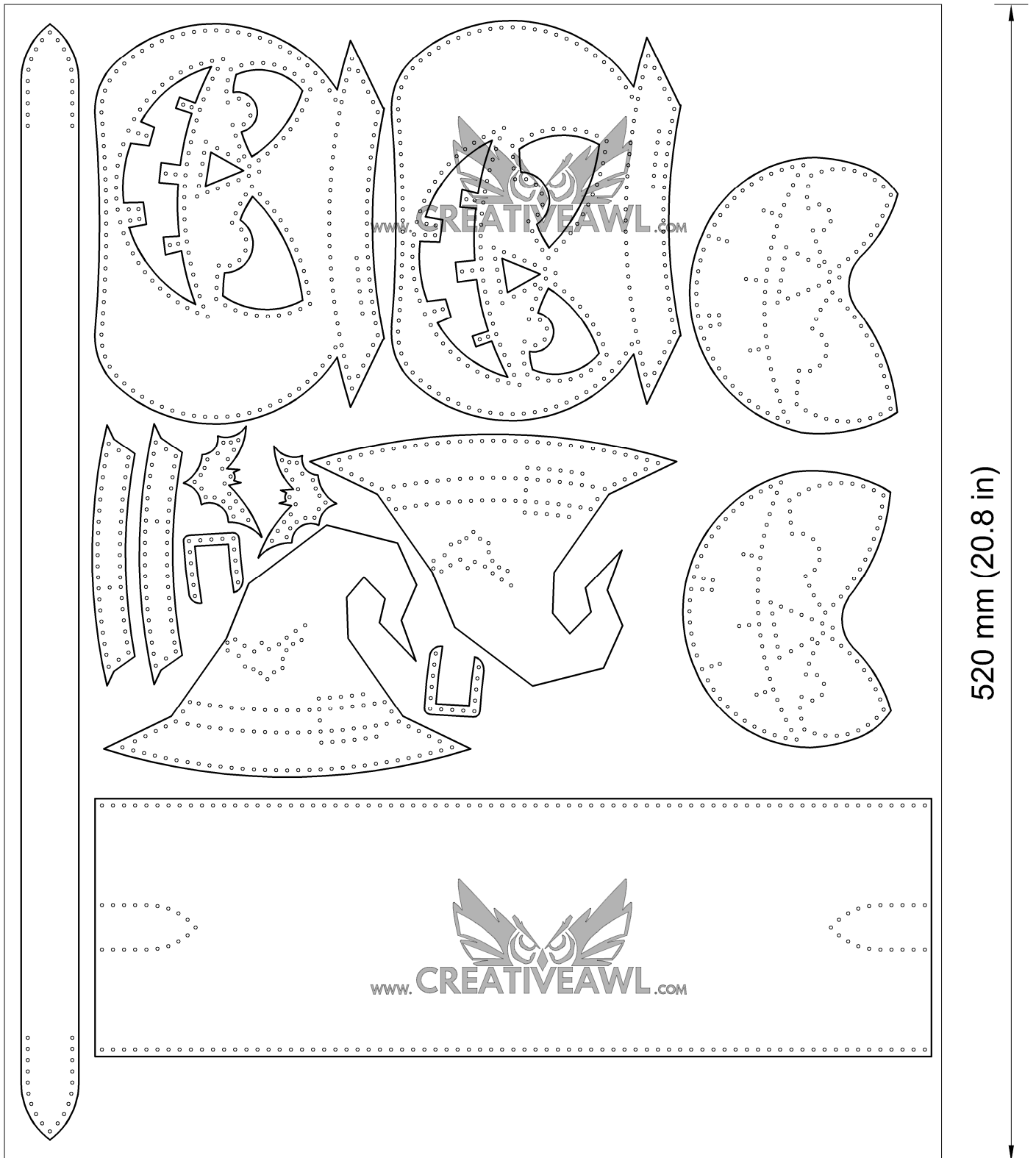
Leather pumpkin candy box: pages 4 - 13

- The number in the circle shows which holes are to be connected. Example: ①
- Numbers 1, 2, 3 (...) without a circle indicate where the piece lies in the overview drawing.

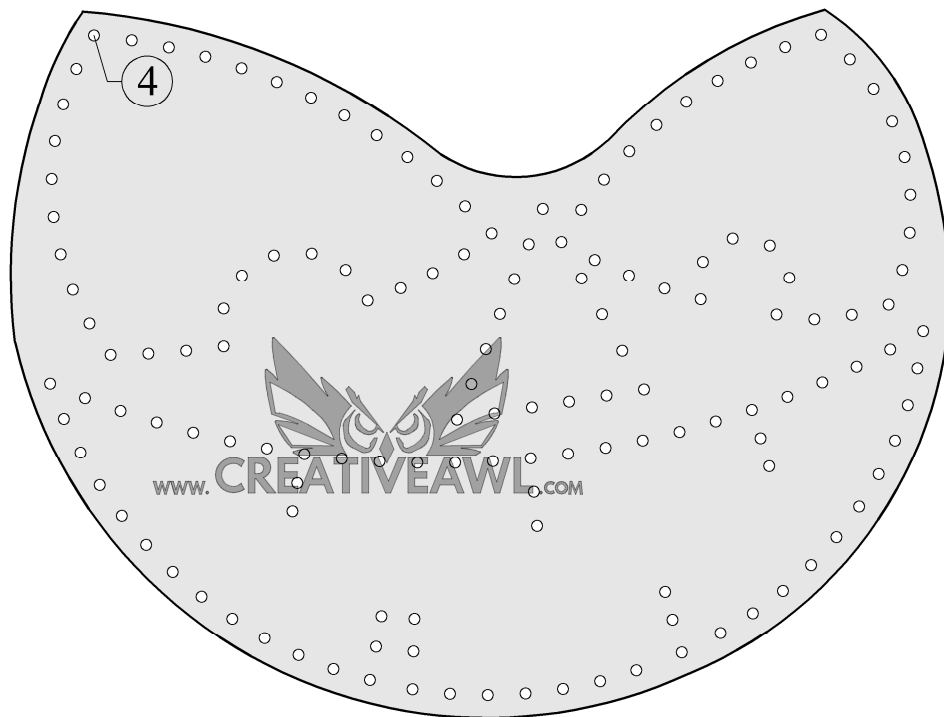


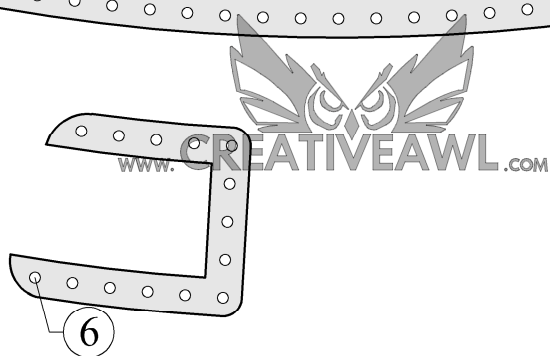
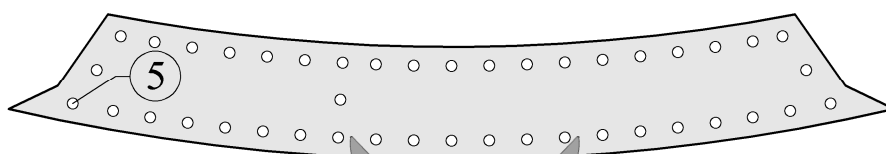
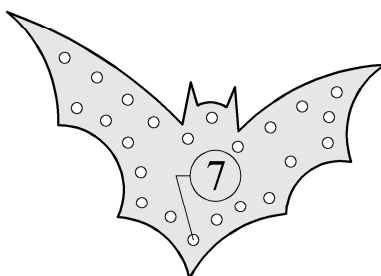
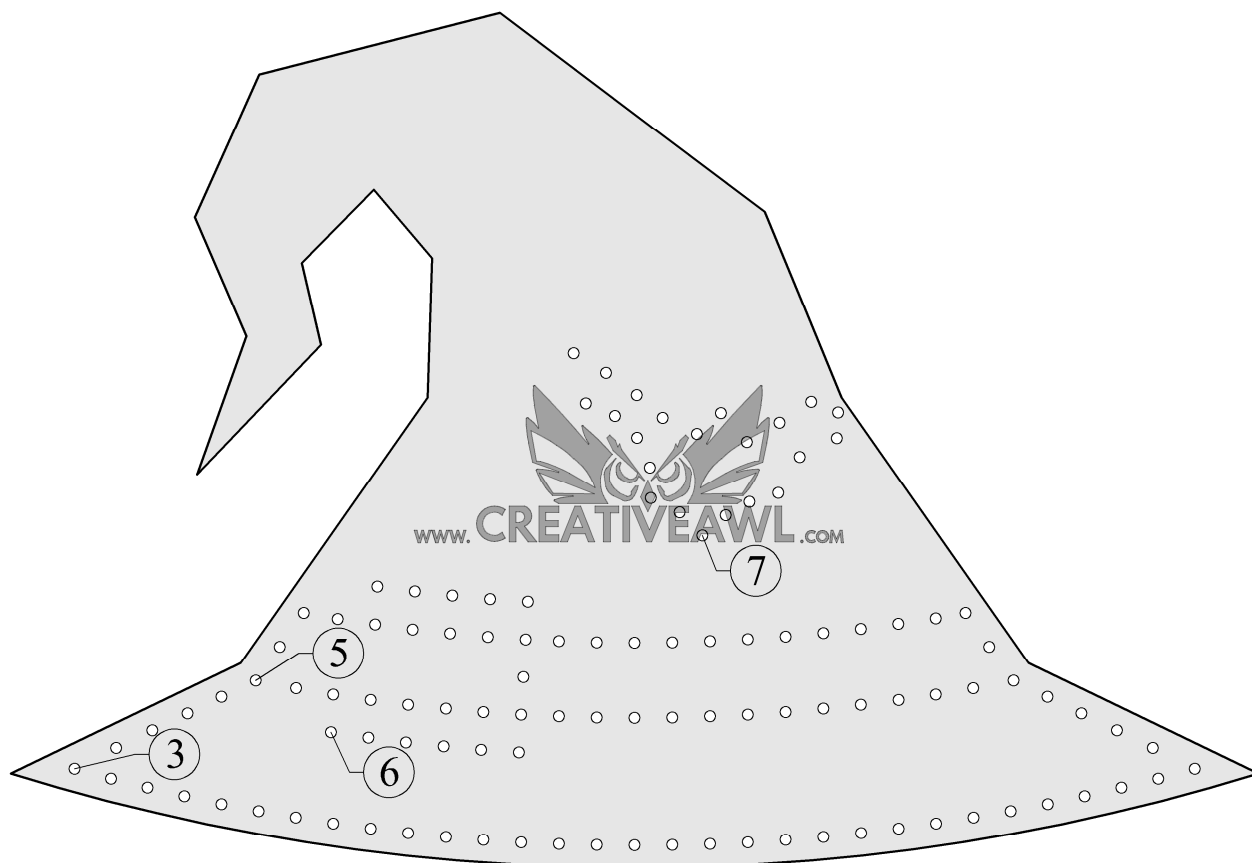
Sketch drawing

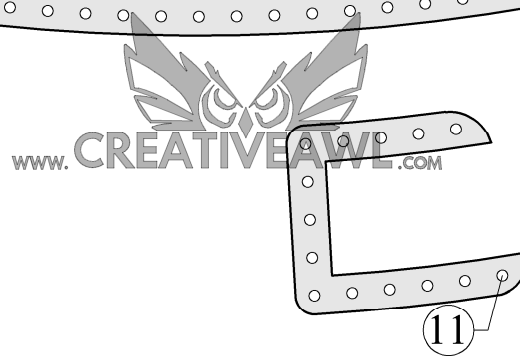
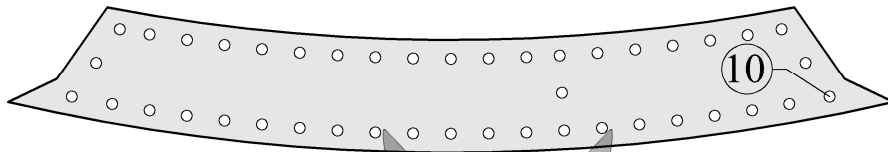
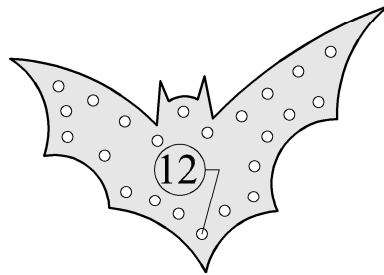
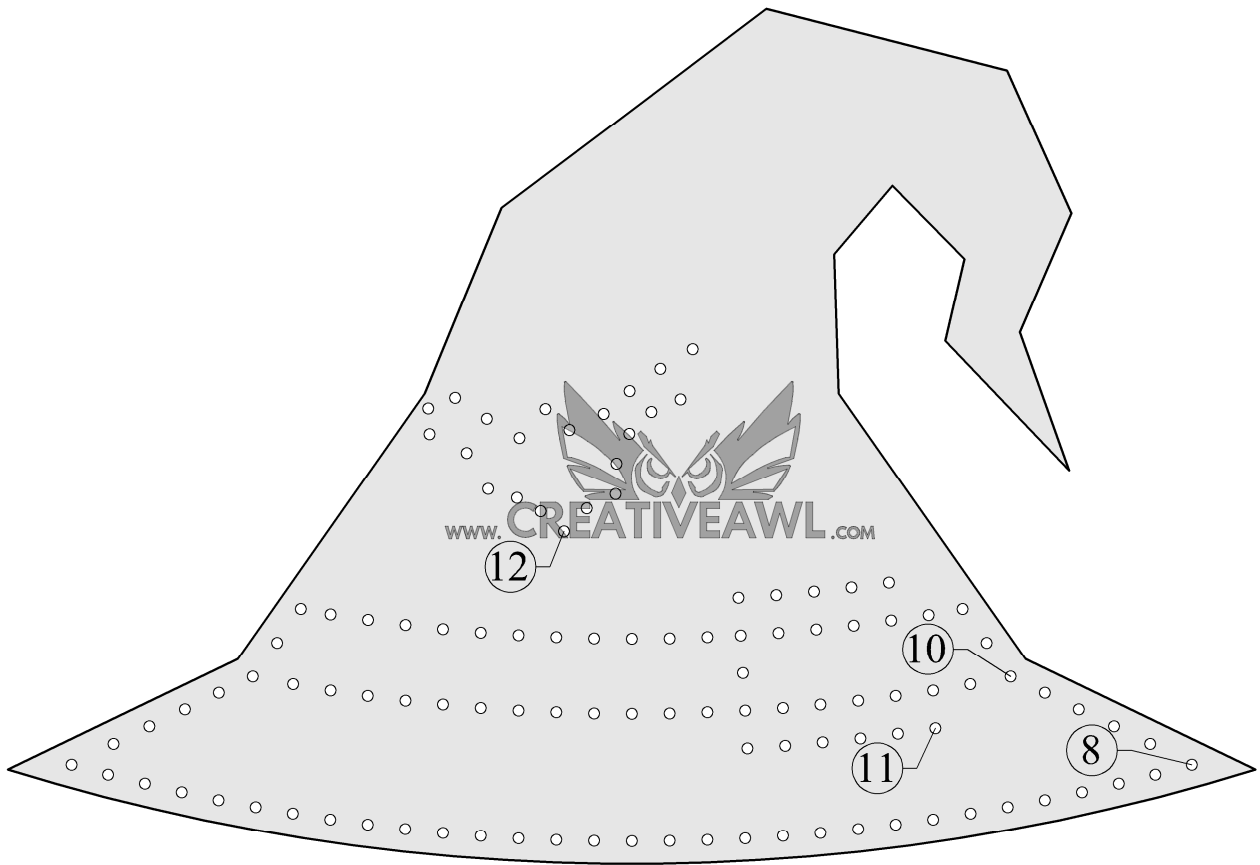
Leather needed for a pumpkin candy box: about 0,20 m2
420 mm (16.8 in)

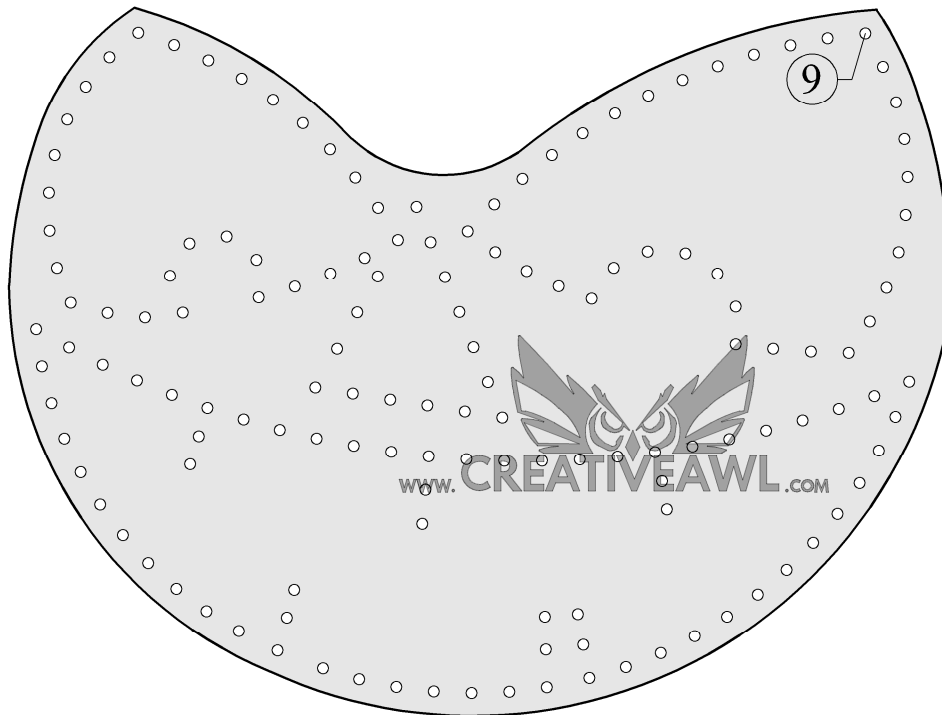
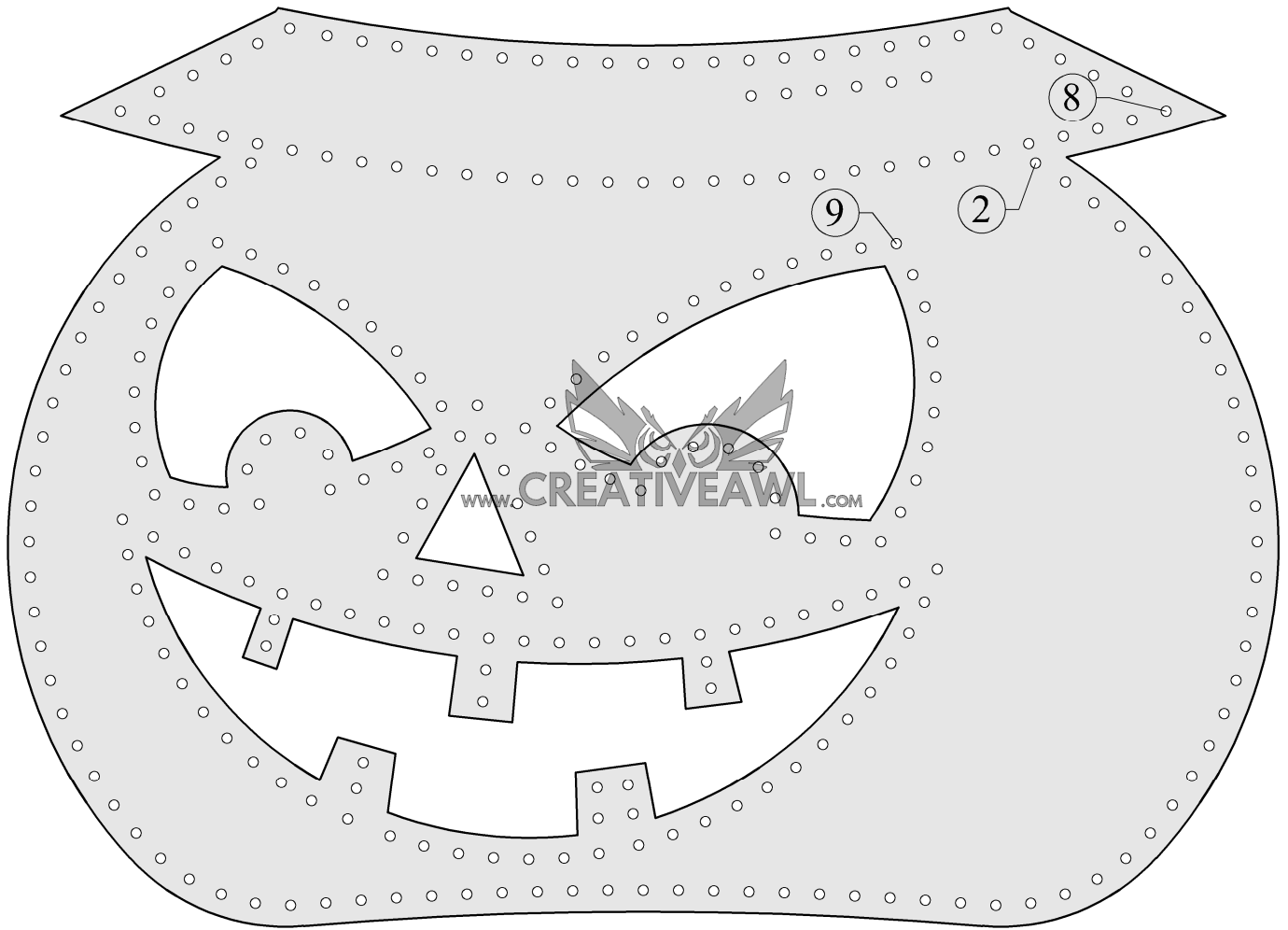


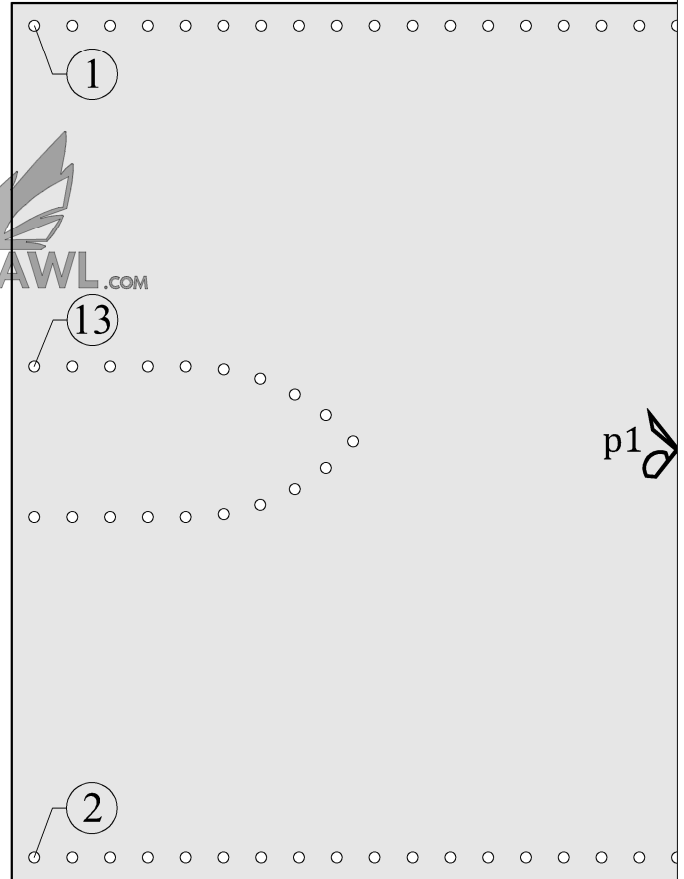
Sketch drawing
Bill of materials













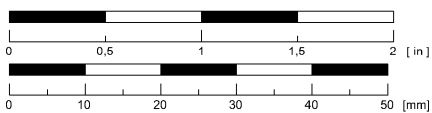
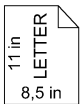
p1

p2



p3

p4



Sketch draving

