

"Turtle" bag



PRINT OUT THE PATTERN ACTUAL SIZE A4

50 MM

2 IN

YouTube Channel



Facebook Group



TreeHousePatternsUK. All Rights Reserved

- HARDWARE -

- 2 x O-ring 25 mm**
- buckle 25 mm**
- zip (minimum 22 cm)**

Leather 2.0 - 2.2 mm / 5 - 6 oz.

Measurement of the leather

You will need to finish this project:

**77 cm x 69 cm / 30,31 in x 27,16 in
plus strap**

TOOLS

- knife**
- 1.0 - 1.2 mm hole puncher**
- hammer**
- 2 needles**
- a home printer**

**For print the pattern out please select the size of the paper.
You will use (A4, A1 or US LETTER)
and then in the printer settings choose actual size.**

Print



Printer: Canon TS3300 series Properties Advanced Help ?

Copies: 1 Print in grayscale (black and white) ☒ Save ink/toner i

Pages to Print
☒ All ☐ Current ☐ Pages 1 - 12
[More Options](#)

Page Sizing & Handling i

Size Poster Multiple Booklet

☐ Fit ☒ Actual size
☐ Shrink oversized pages ☐ Custom Scale: 100 %
☐ Choose paper source by PDF page size

☐ Print on both sides of paper

Orientation:
☒ Auto ☐ Portrait ☐ Landscape

Comments & Forms
Document and Markups Summarize Comments

Page Setup...

Document: 8,3 x 11,7in
8,27 x 11,69 Inches

- HARDWARE -
- 2 x clip 18 cm
- 4 x D-ring 15 mm
- chain bag for the strap
- 2 x big Trigger Hooks 15 mm
- buckle 15 mm

Measurement of the leather
You will need to finish this project: Belt Bag
82 cm x 28 cm / 20,47 in x 11,02 in
plus strap

TOOLS
- knife
1,0 - 1,2 mm hole puncher
- hammer
- 2 needles
- a home printer

Tree House Patterns
TreeHousePatternsUK All Rights Reserved

< >

Page 2 of 12

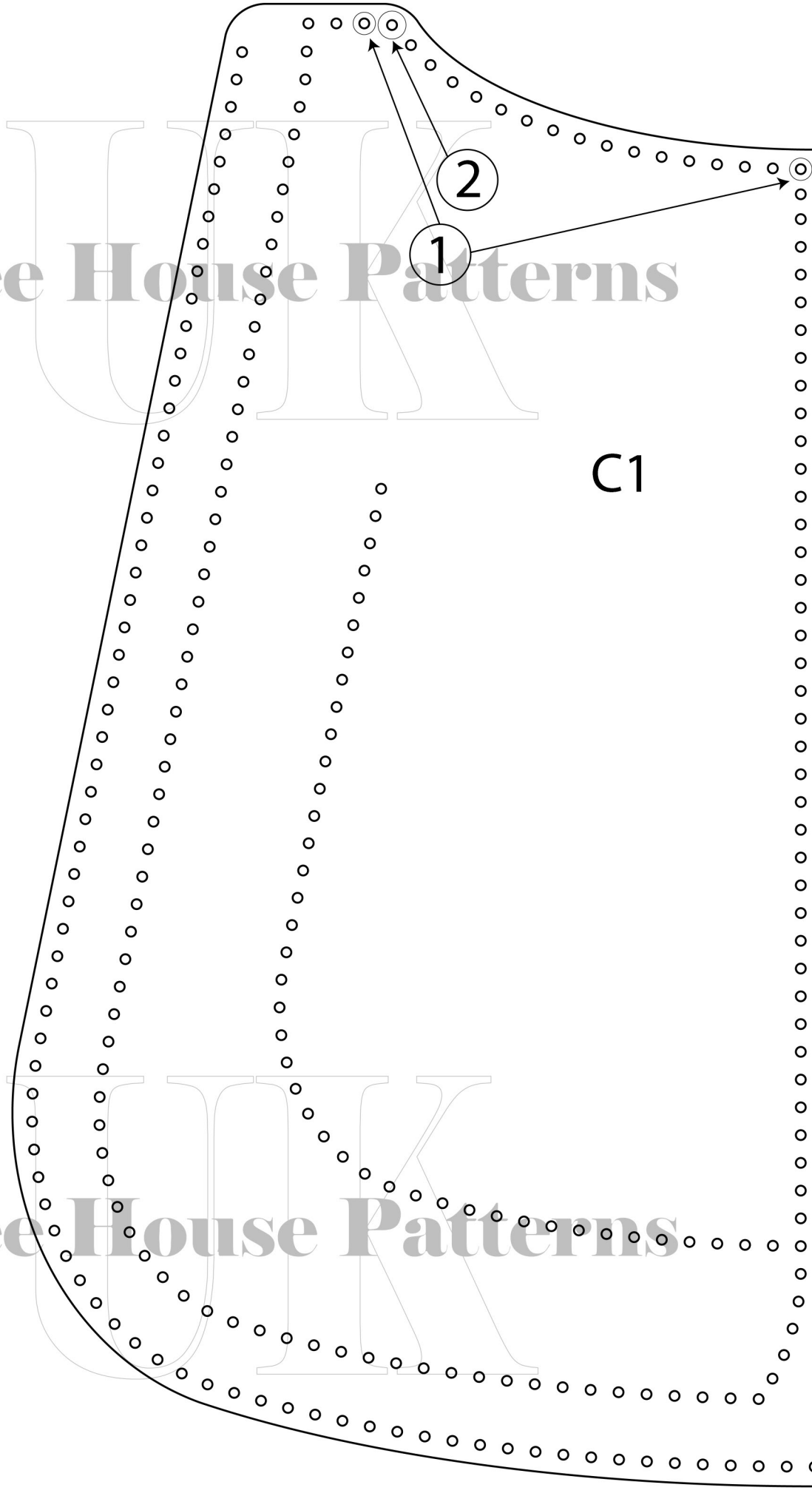
Print Cancel

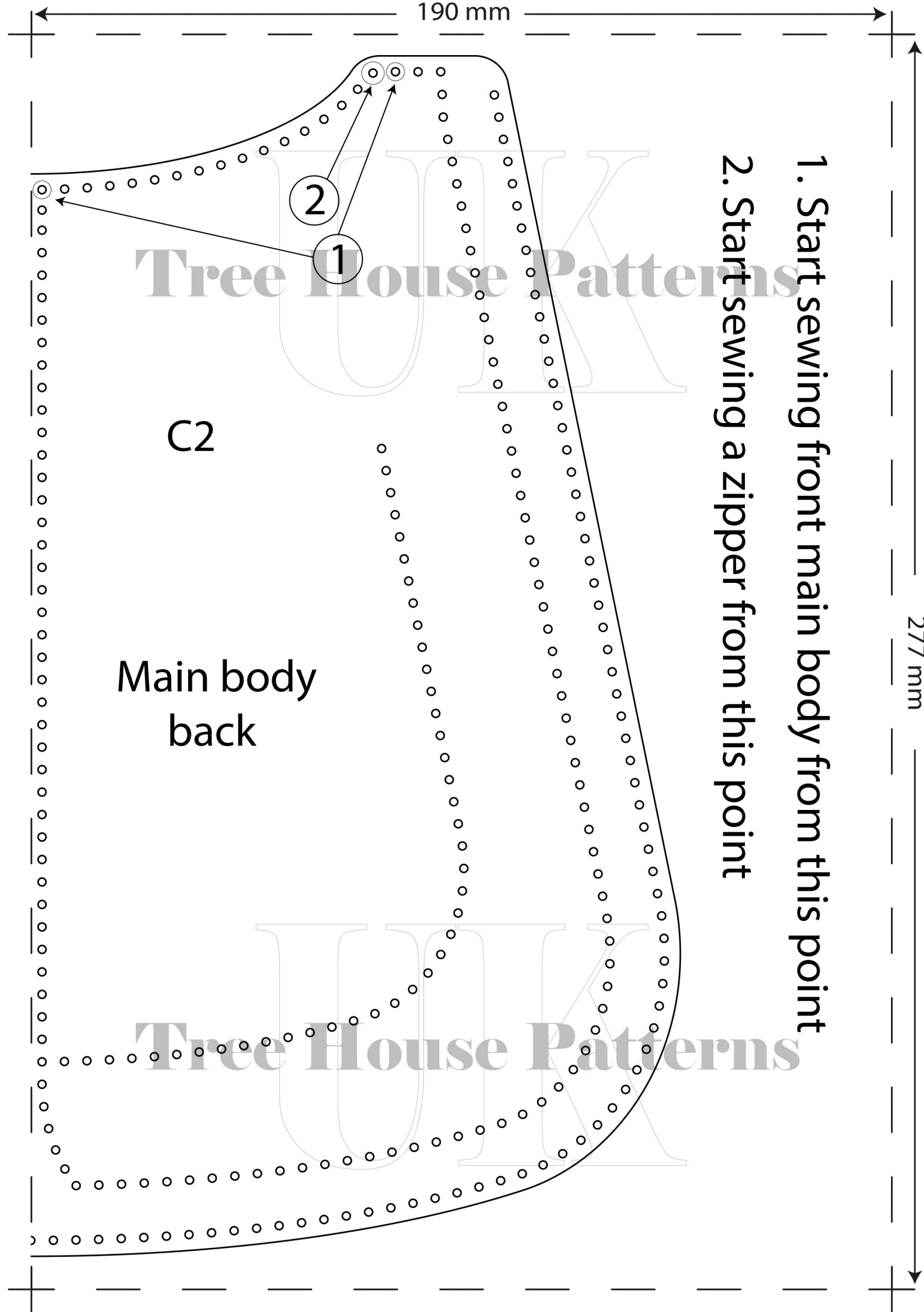


1. Start sewing front main body from this point
2. Start sewing a zipper from this point



Tree House Patterns





190 mm

277 mm

C2

Main body
back

1. Start sewing front main body from this point
2. Start sewing a zipper from this point

2
1

190 mm

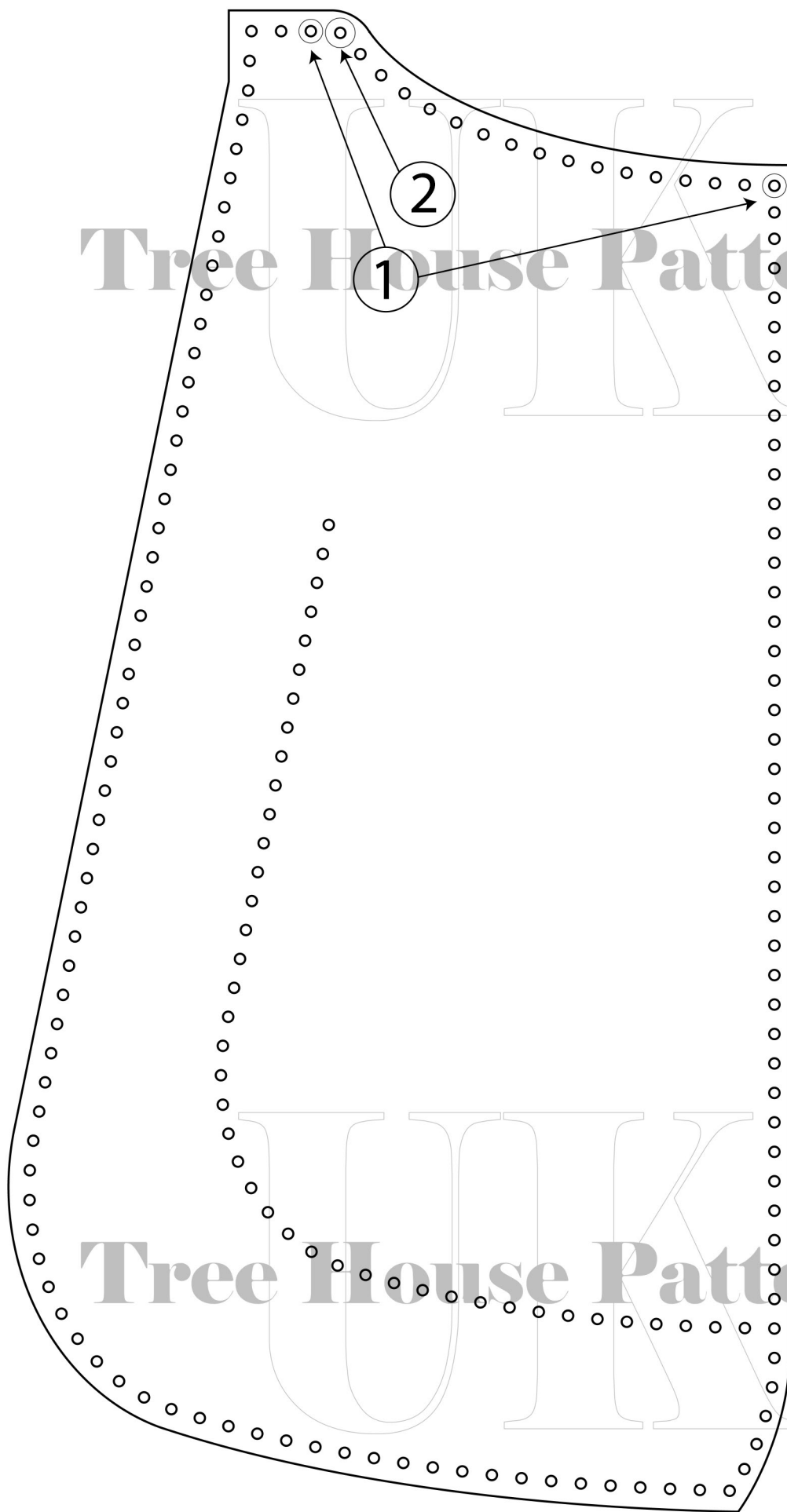
277 mm

Tree House Patterns

Tree House Patterns

2

1



190 mm

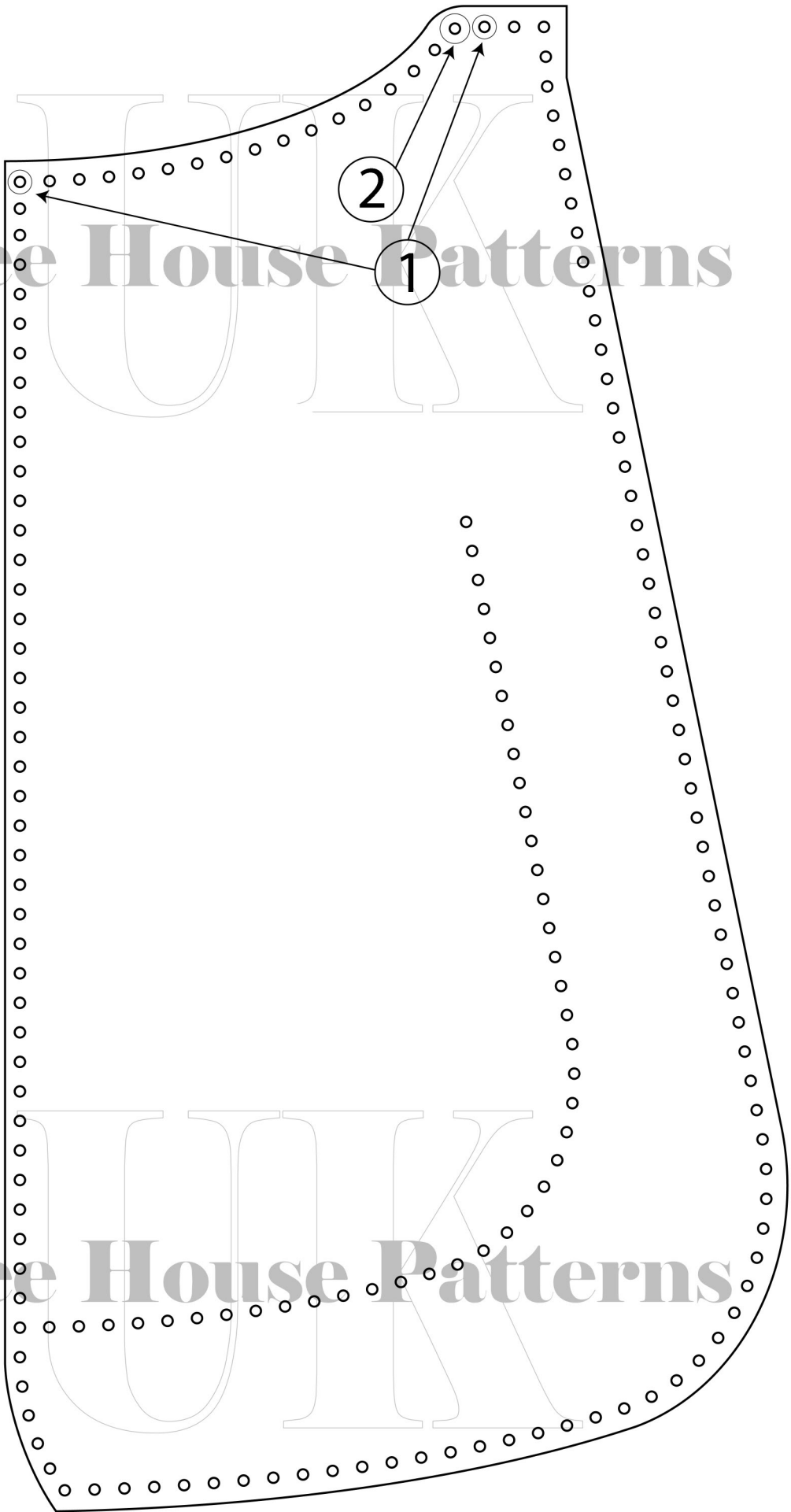
277 mm

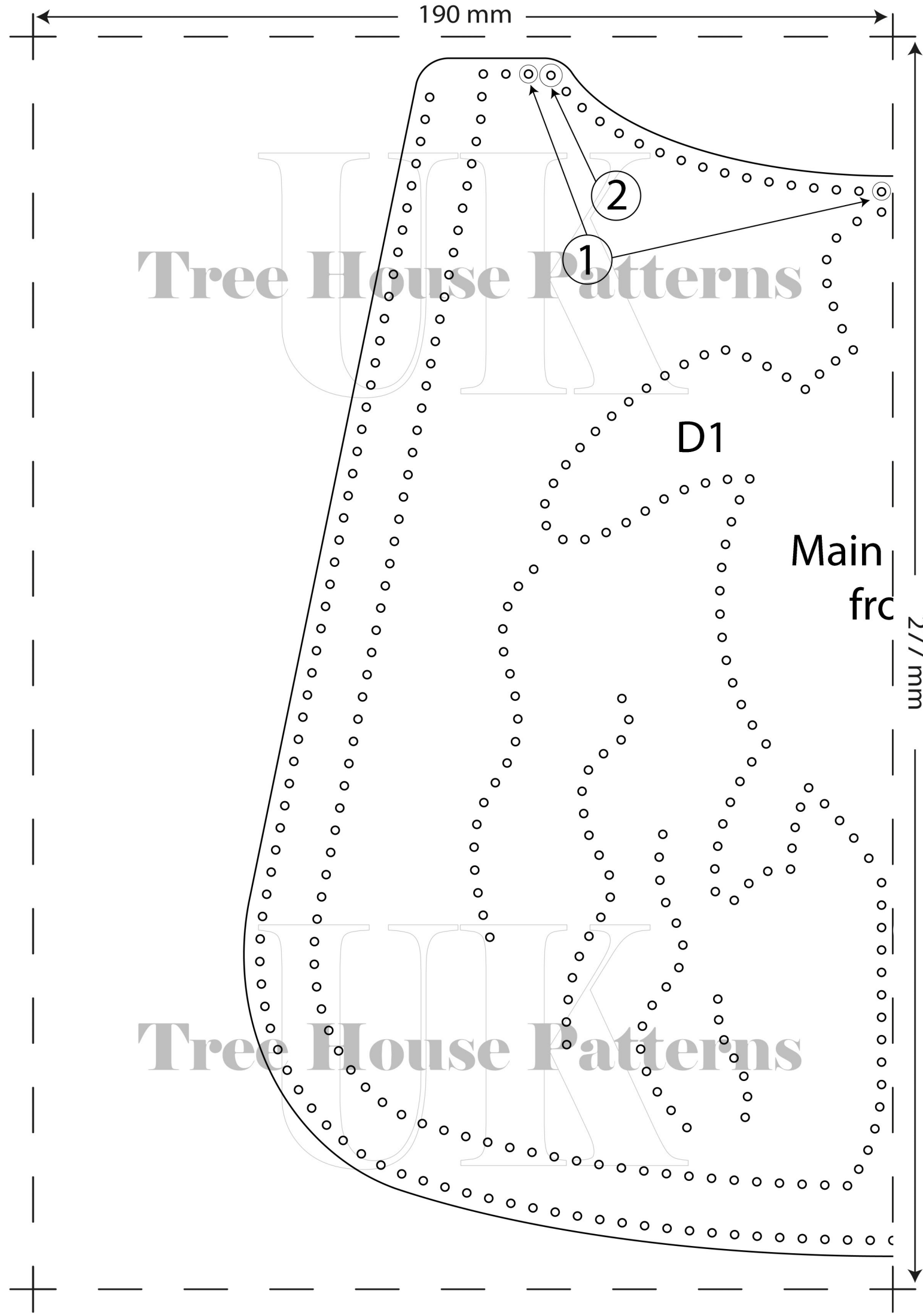
Tree House Patterns

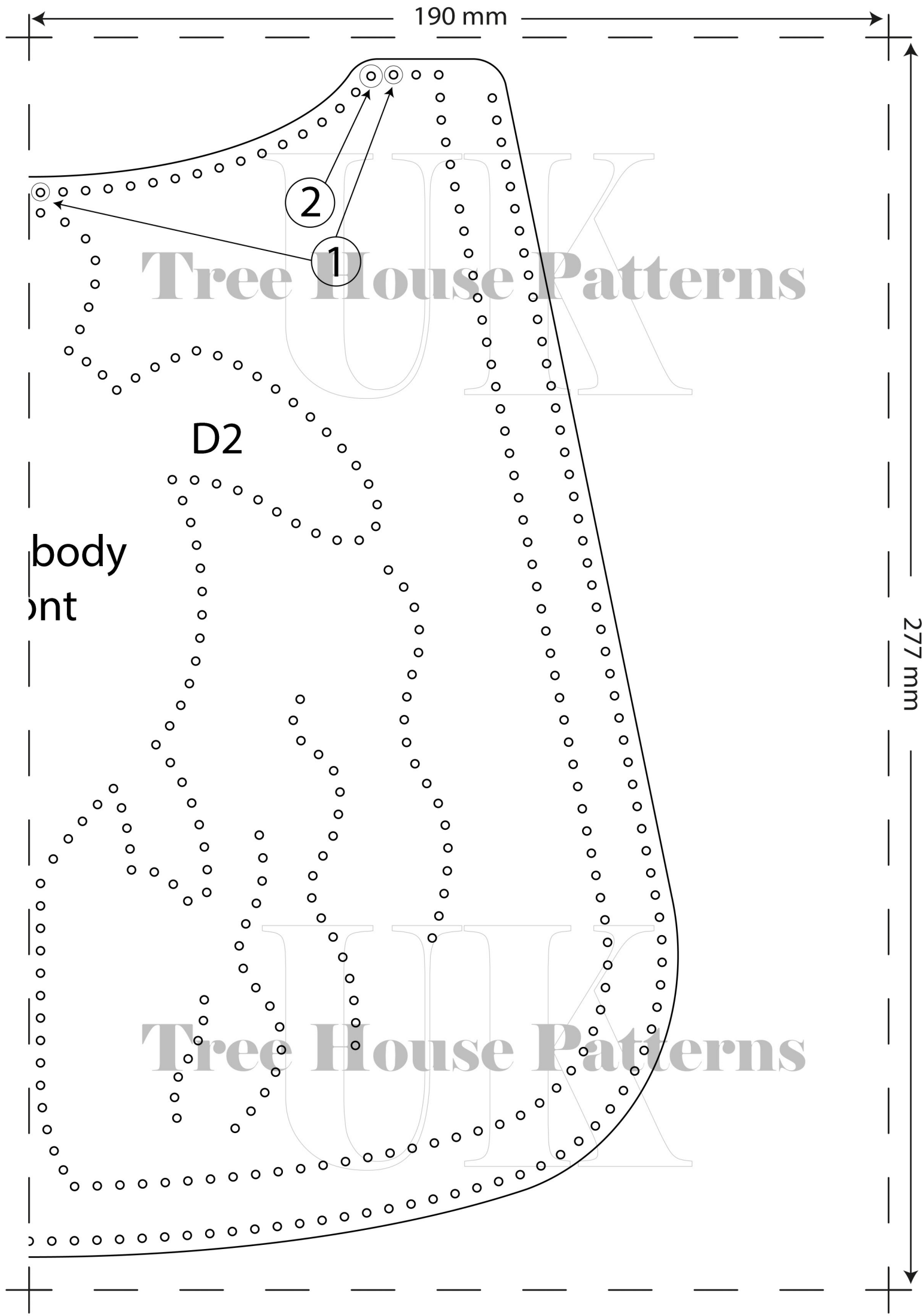
Tree House Patterns

2

1







190 mm

277 mm

2

1

D2

body
ont

Tree House Patterns

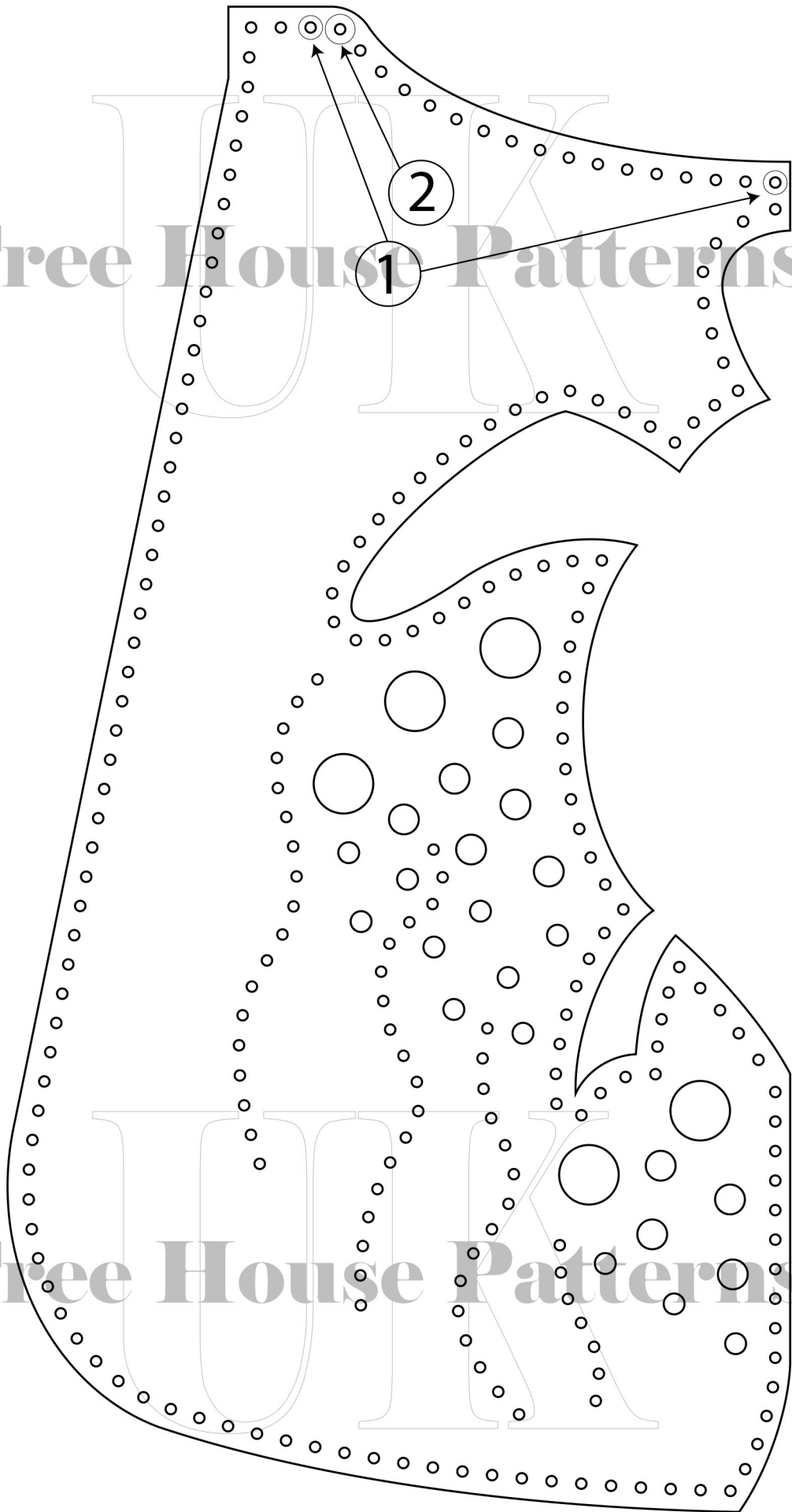
Tree House Patterns

190 mm

277 mm

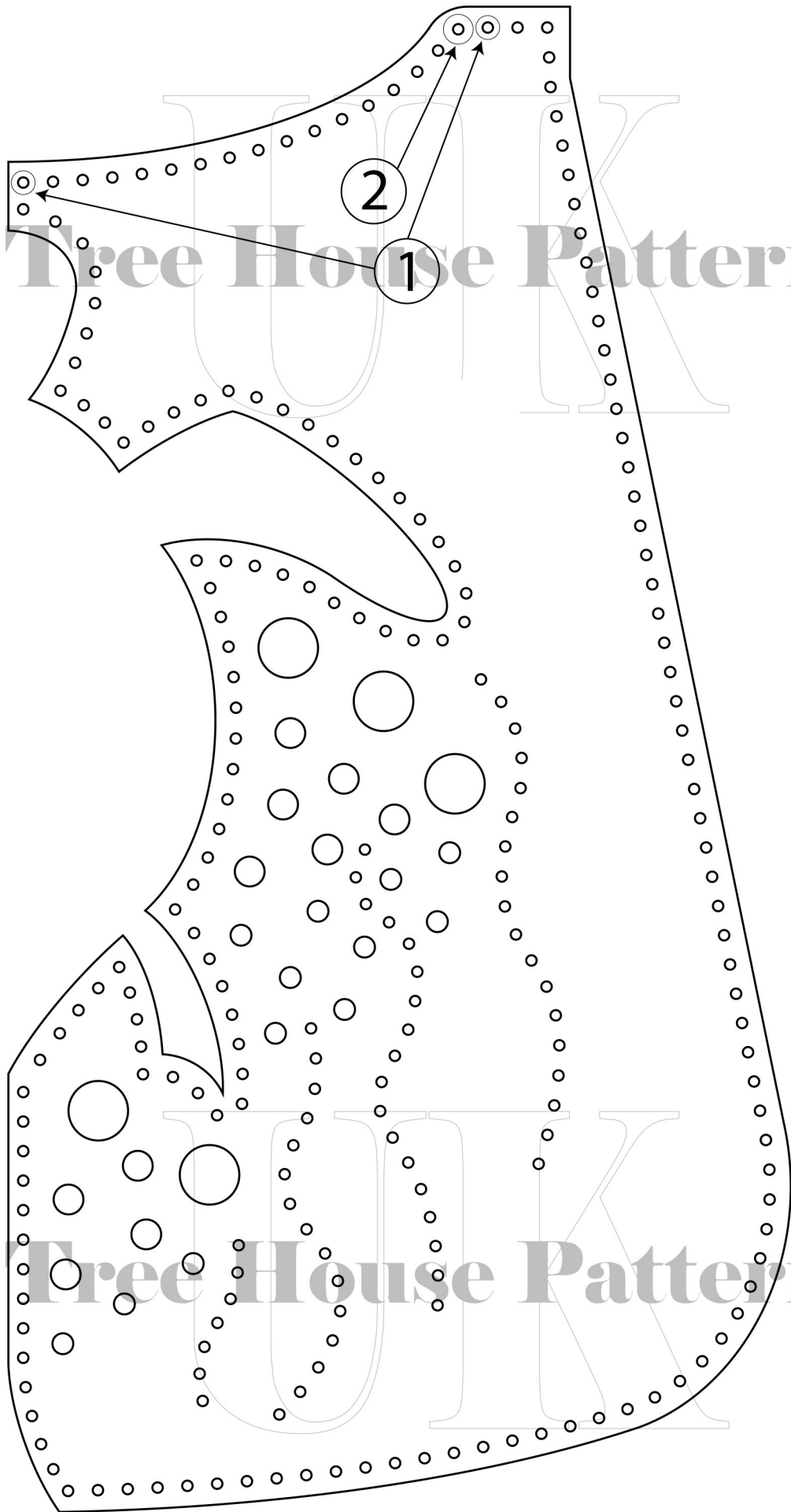
Tree House Patterns

Tree House Patterns



190 mm

277 mm



Technical drawing of a tree house pattern (E1) showing a large trapezoidal shape and a rectangular Gusset, both with perforations. Dimensions include 190 mm width and 277 mm height. Callouts '2' point to specific features.

190 mm

277 mm

Tree House Patterns

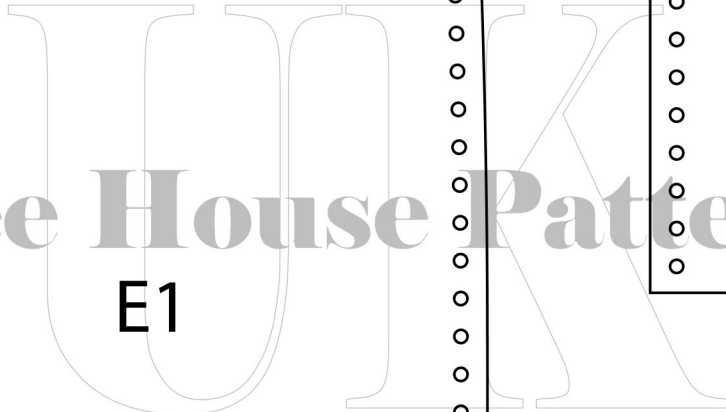
Gusset

E1

2

2

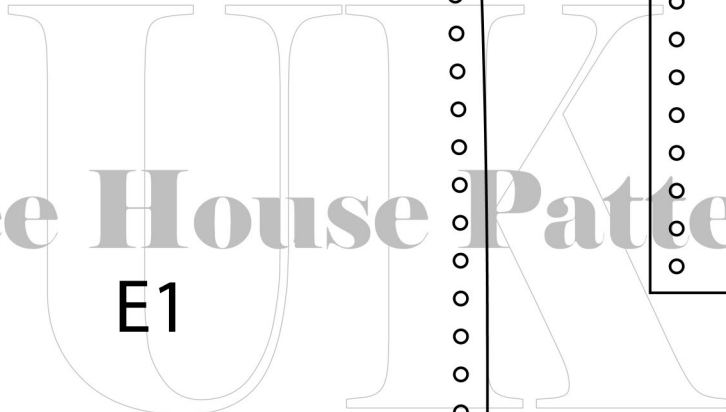
2



U.K.

e House Patte

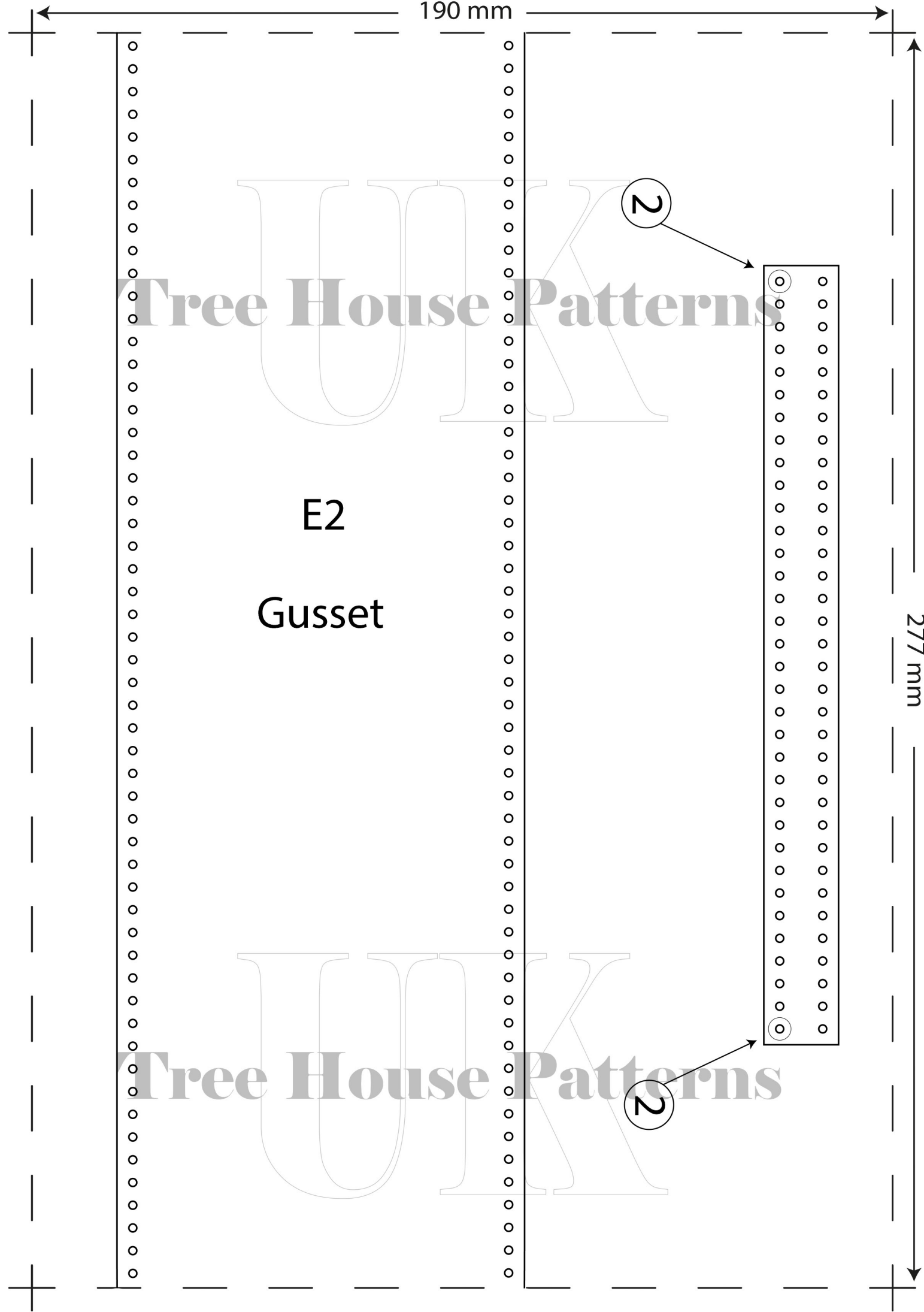
E1

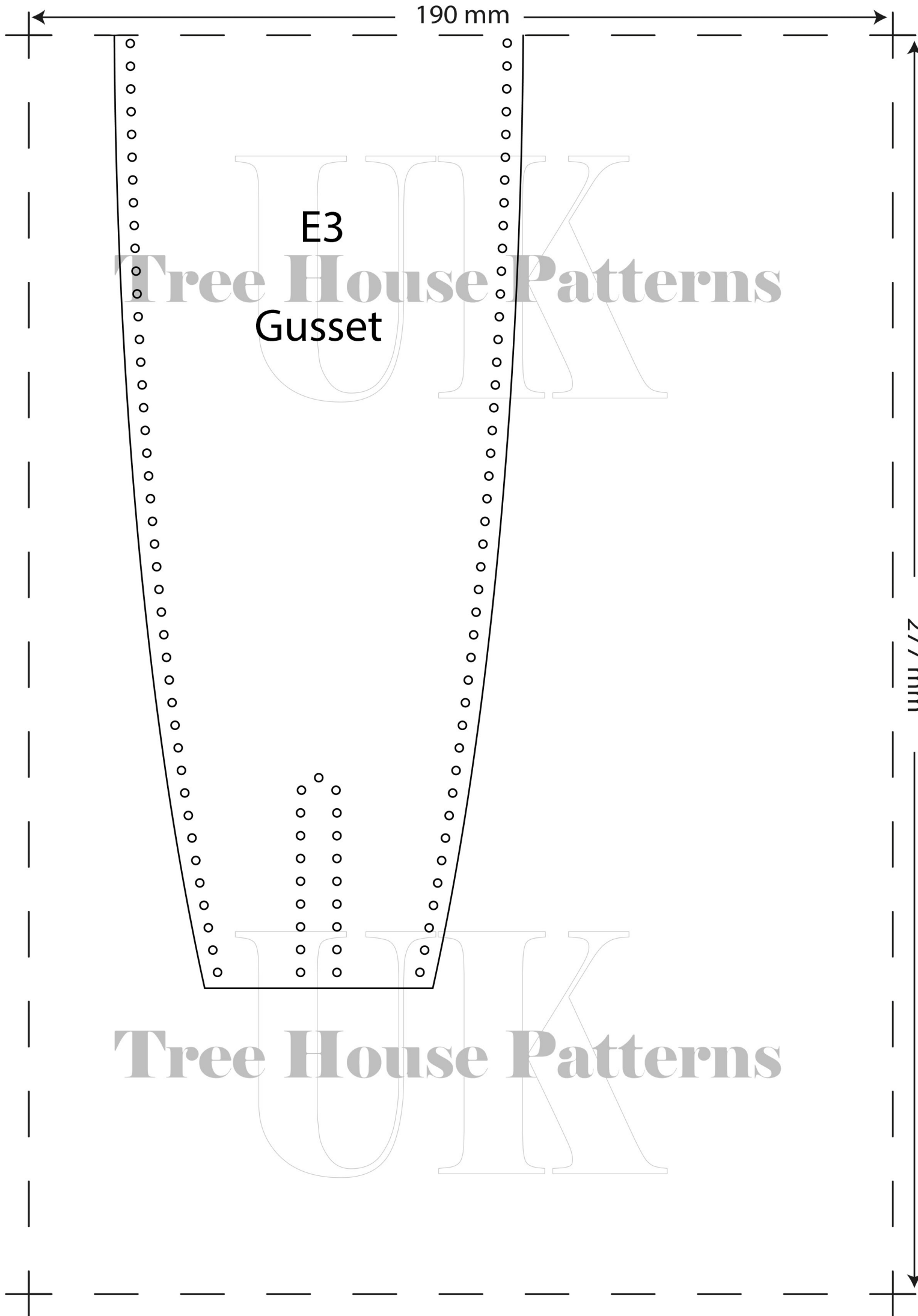


U.K.

e House Patte

E1





190 mm

277 mm

E3

Gusset

Tree House Patterns

Tree House Patterns

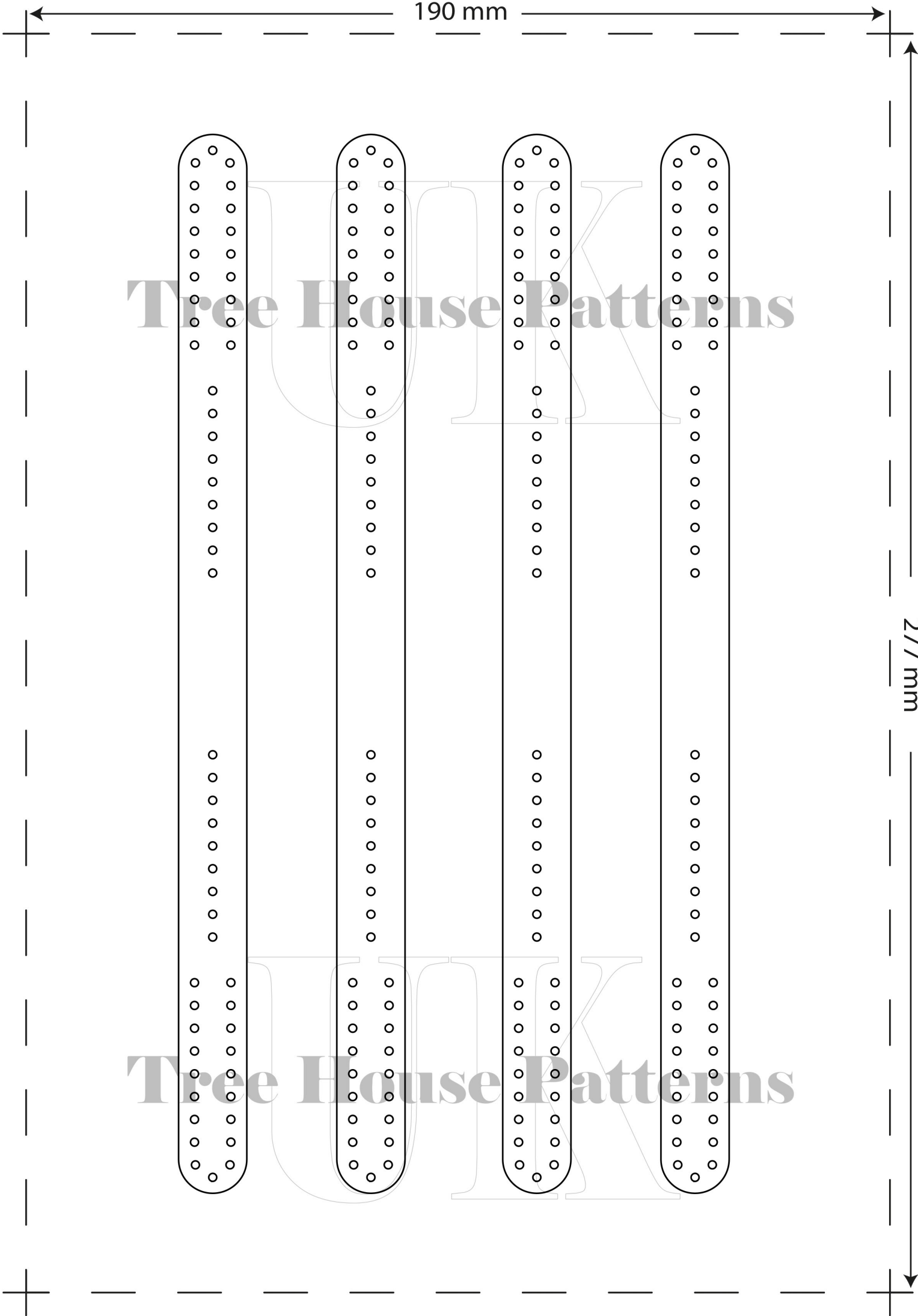
190 mm

277 mm

Tree House Patterns

Pocket

Tree House Patterns



190 mm

277 mm

Tree House Patterns

Tree House Patterns

190 mm

B1

B2

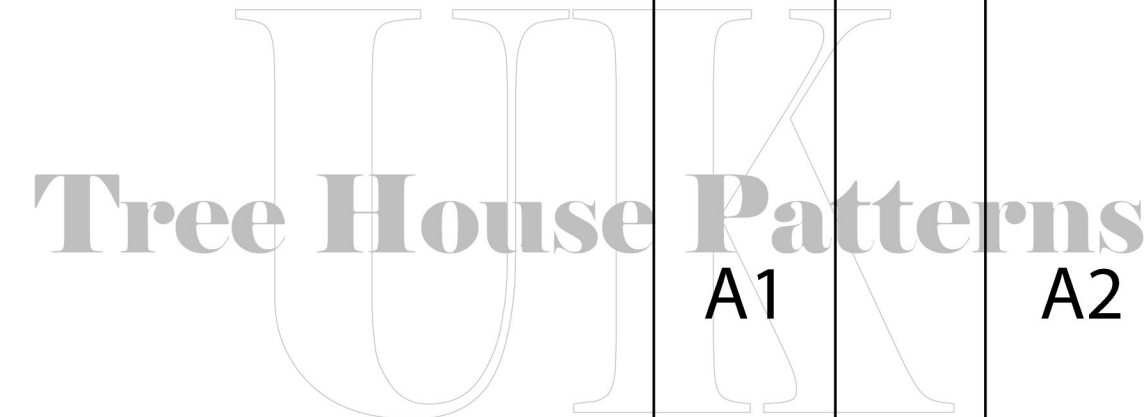
B3

B4

B5

The belt
adjust this to your own preference

277 mm



Tree House Patterns

A1

A2

○

○

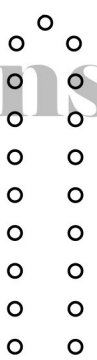
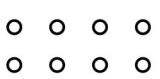
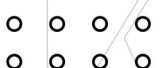
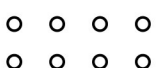
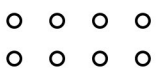
○

Belt loop

○

○

○



190 mm

277 mm

COPYRIGHTS
TreeHousePatternsUK

Dear customers,
we would like to inform you
that we allow the sale of physical products
made by you on the basis of our designs in your stationary stores,
online stores or fairs,
as many as You wish.

However, we do not agree to the resale
of our templates,
any abuse of this will be reported.

We will be pleased if,
by displaying photos of your products
made on the basis of our template,
You will add us as the creator of the project,
or attach a link to the store where
the template was purchased.

We are not making SVG files
and please don't ask
us to
convert the PDF files we have
created into an SVG file

Tree House Patterns