

ZIPPER PENCIL CASE

This pattern is provided by

Plan.B Leather



1. Print at actual size (Scale : 100%)
2. Be sure to check by actual measurement that the length of the printed pattern is the same as the written dimensions.

● GUIDE

//////// Stitch Line

———— Cutting Line

 - - - - Cutting After Assemble


- -  - - Pattern Cutting Line

———— Skiving Line

———— Guide Line

- - - - - Folding Line

 Gluing Area

 Hole Position

RD : Diameter(mm) of Round

HD : Diameter(mm) of Hole Punch



Select before printing, "Actual Size" or print scale 100% in the printer settings.

● MATERIAL USED

► LEATHER

Art. Kansas leather (WALPIER TANNERY, Italy)

Color : Gray / Temper : Semi-Soft

Thickness - BASE, HANDLE : no skiving 2.8mm (7oz, 0.109 in)

► THREAD

Vynmo MBT

Thickness no : #5(BASE), #8(HANDLE)

Color no : 144

► CHISEL

Spacing : 4mm

Type : diamond

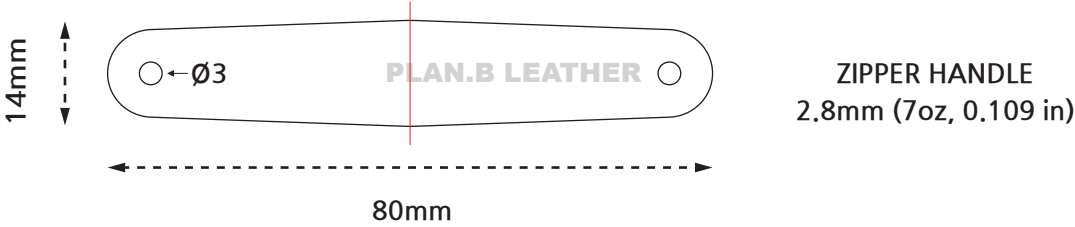
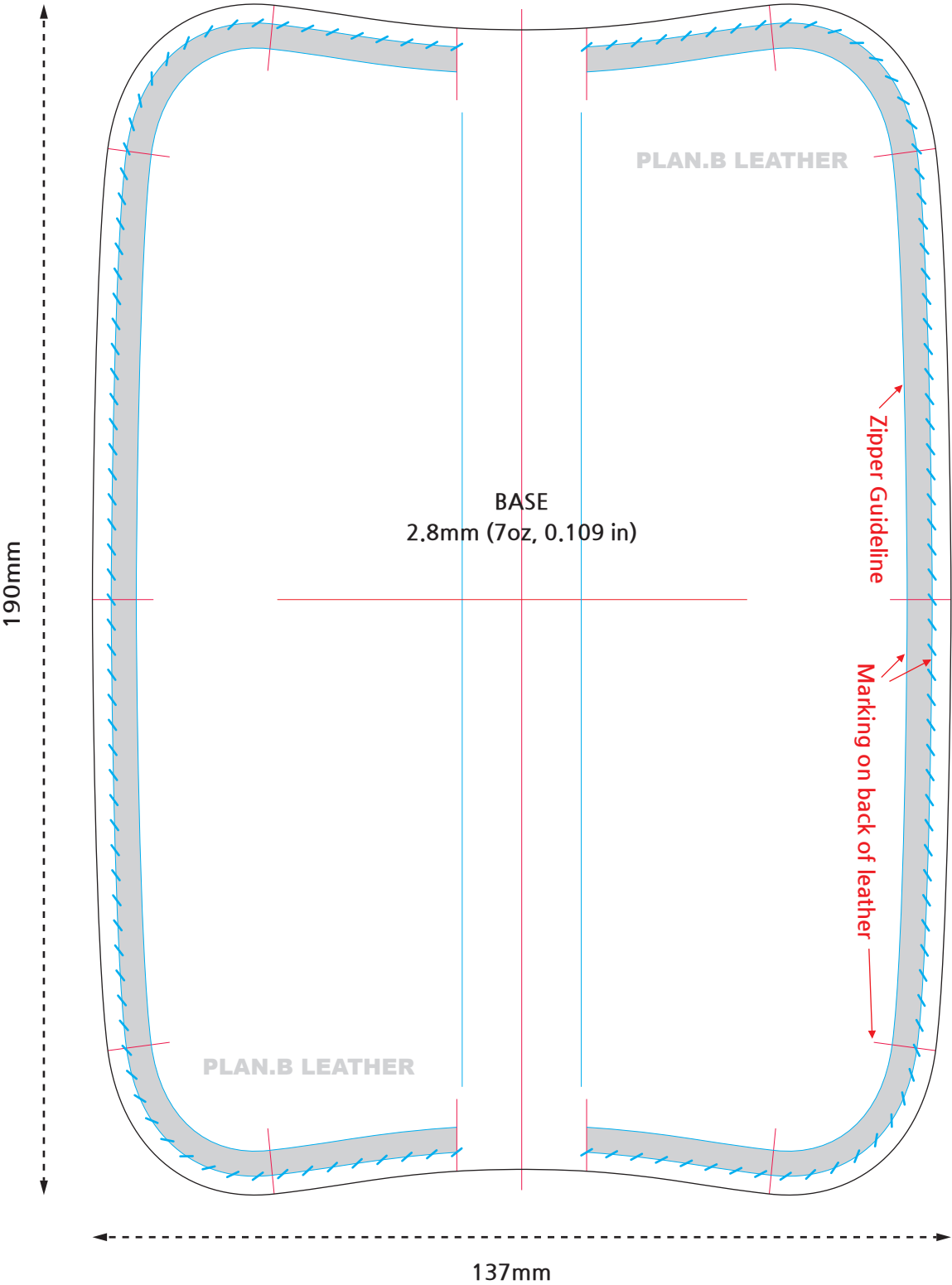
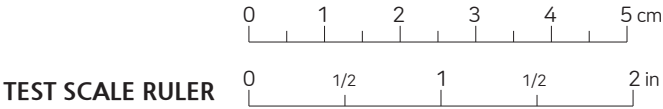
★ Set the leather thickness and stitch spacing according to your preference.



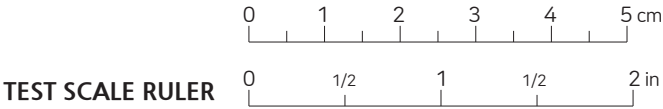
► Making Video : <https://youtu.be/N7C2xU1U2xc>

► Youtube Channel : <https://youtube.com/@plan.b>

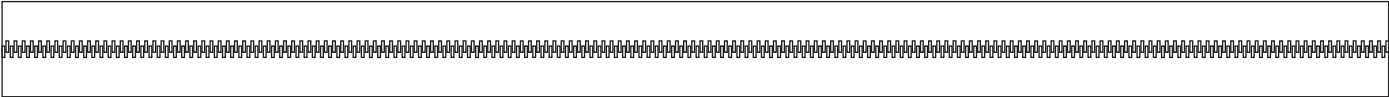
BASE



ZIPPER

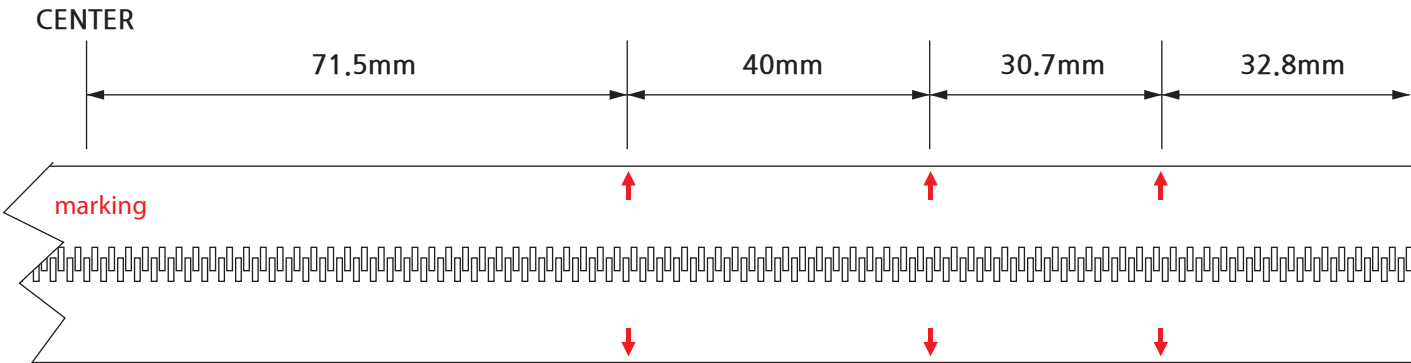
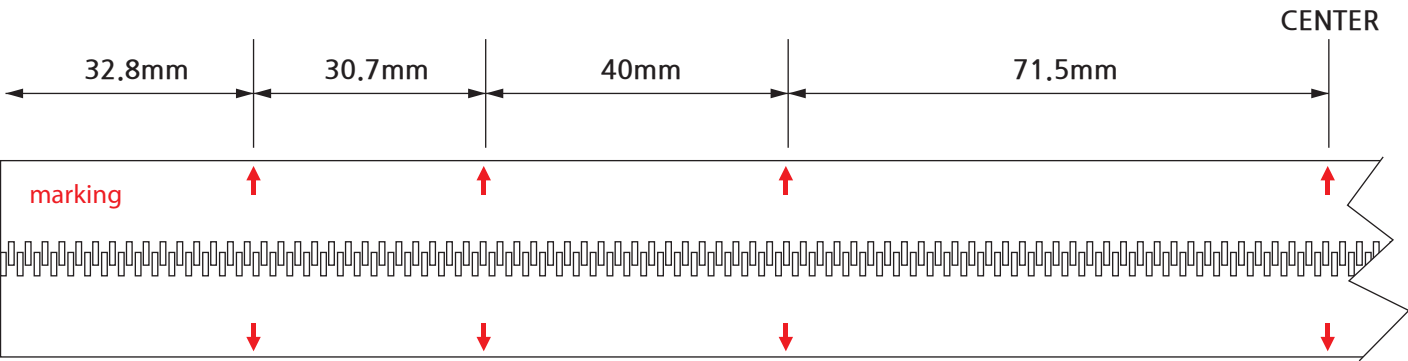


ZIPPER TOTAL LENGTH

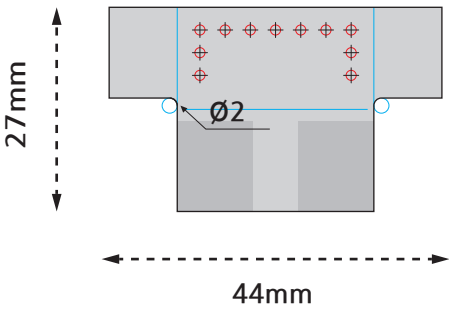


350mm
(Cut with a little bit of leeway.)

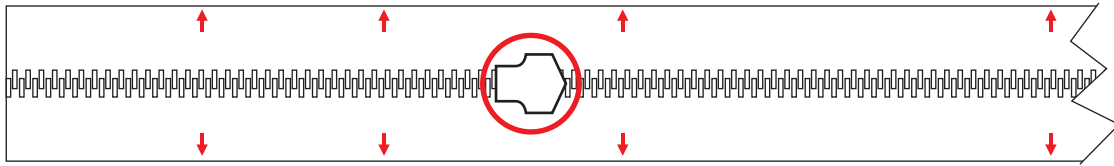
MARKING GUIDE LINE



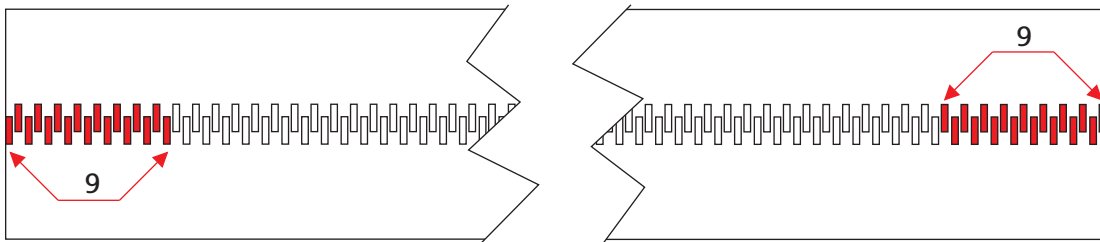
*** Use the guide points to mark where to attach. Do not use rulers.



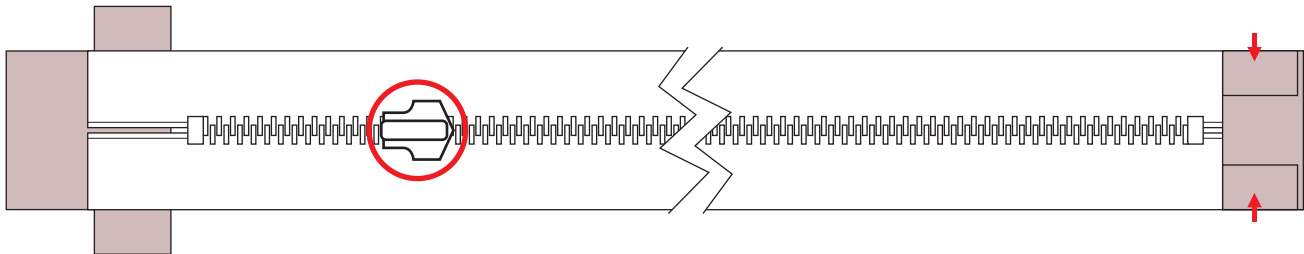
ZIPPER END
0.8mm (2oz, 0.031 in)



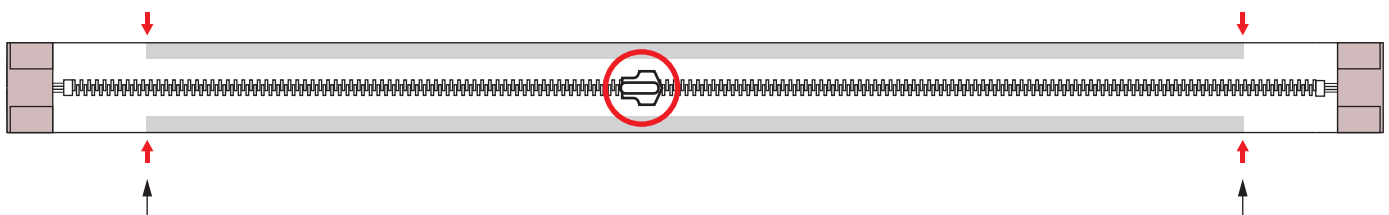
Position the marked part at the bottom of the slider and insert the slider.



Remove teeth equal to the length of 9 teeth from each side.



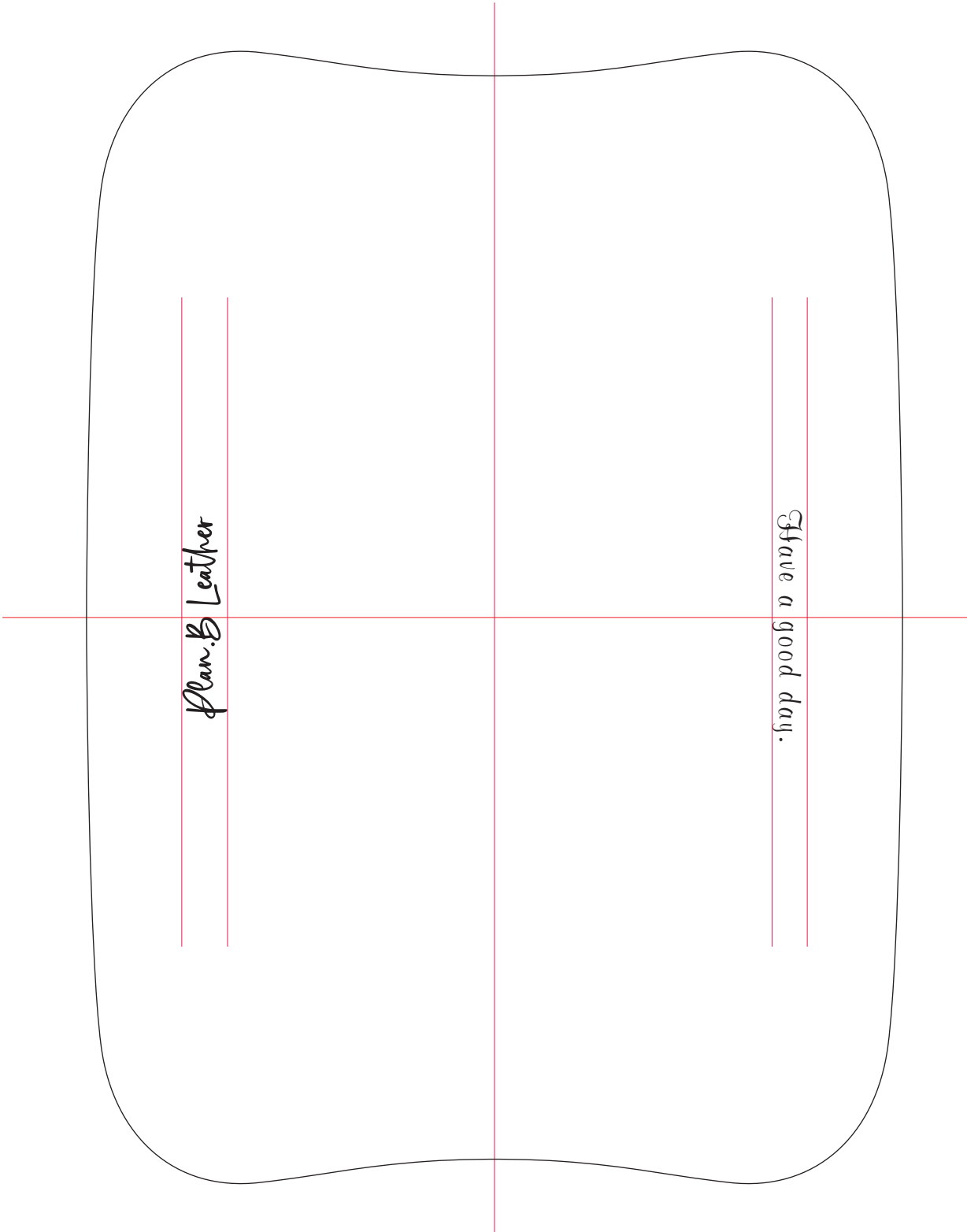
When attaching the ends, attach them with the wings facing upward.



Apply glue only to the inside of the marking.

STAMP POSITION

This pattern is provided by
Plan.B Leather



Thank You For Your Purchase!