



vk.com/kopilka_vikroek





#MoodSavannahPattern

“The Savannah Shacket”

Ladies Sizes 00 to 32

Formatted for both
US Letter & A4 Paper

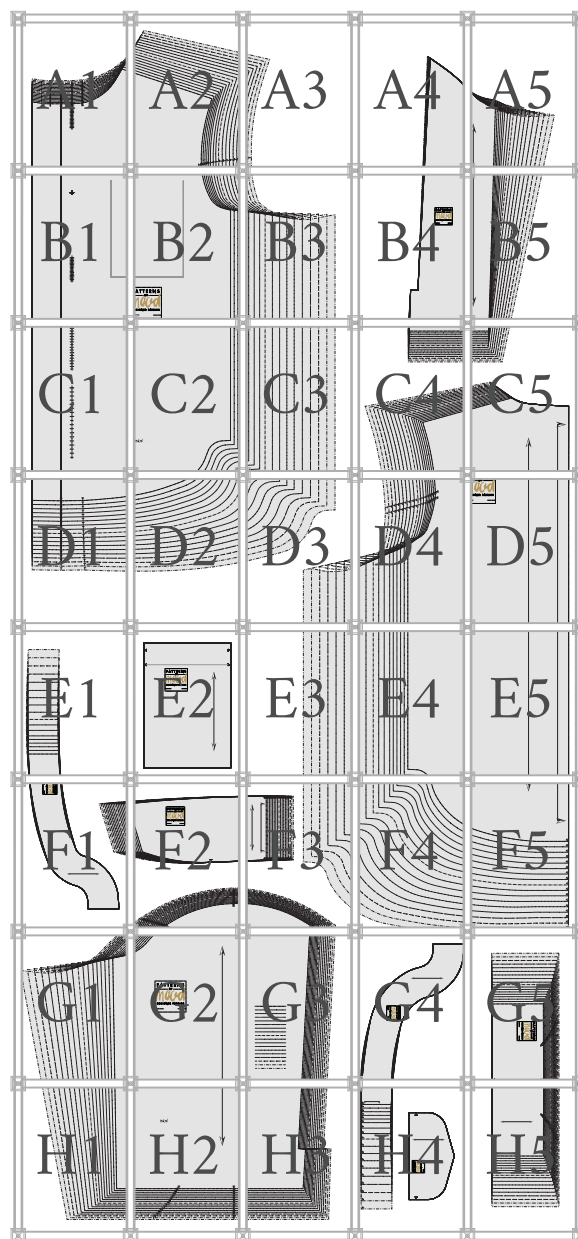
Trimless Option: This is the fastest! No trimming needed! Place left-side margins over right-side margins, overlapping dashed lines and dots. In the same fashion, top margins will overlap bottom margins. Slight unprinted gaps are normal for this method.

Trimmed Option: This removes any unprinted gaps. Trim along the top and right margins at the dashed lines. Overlap the trimmed margins to the untrimmed margins, matching dashed lines and dots.

Tip! Build rows first, then join the rows together as you go.

STOP!

Print only this page first to check accuracy.
The Mood square to the left should measure 2 inches.
Print “actual size” in “portrait” mode (not auto center).
Formatted for both US Letter & A4 paper sizes.





"The Savannah Shacket"

#MoodSavannahPattern

Ladies Sizes 00 to 32

LADIES SIZE GUIDE

BODY MEASUREMENTS - IN INCHES

DUO-SIZES	00 / 0		2 / 4		6 / 8		10 / 12		14 / 16		18 / 20		22 / 24		26 / 28		30 / 32	
SINGLE SIZES	00	0	2	4	6	8	10	12	14	16	18	20	22	24	26	28	30	32
BUST	31	32	33	34	35	36	37.5	39	40.5	42.5	44.5	46.5	48.5	50.5	52.75	55	57.25	59.5
WAIST	23	24	25	26	27	28	29.5	31	32.5	34.5	36.5	38.5	40.5	42.5	44.75	47	49.25	51.5
HIPS	34	35	36	37	38	39	40.5	42	43.5	45.5	47.5	49.5	51.5	53.5	56	58.5	61	63.5

APPROXIMATE FINISHED GARMENT MEASUREMENTS - IN INCHES

SINGLE SIZES	00	0	2	4	6	8	10	12	14	16	18	20	22	24	26	28	30	32
BUST	41	42	43	44	45	46	47.5	49	50.5	52.5	54.5	56.5	58.5	60.5	62.75	65	67.25	69.5
WAIST	41	42	43	44	45	46.5	47.5	49	50.5	52.5	54.5	56.5	58.5	60.5	62.75	65	67.25	69.5
SLEEVE LENGTH*	32.52	32.18	31.8	31.5	31.8	32.18	32.59	33	33.41	33.88	34.35	34.82	35.29	35.76	36.23	36.7	37.17	37.64
SHIRT LENGTH**	28.88	29.25	29.6	30	34.3	34.63	35	35.39	35.78	36.16	36.55	36.94	37.33	37.71	38.1	38.49	38.88	39.26

* Measured from center back neck to bottom of sleeve cuff. ** Measured from top of shoulder to bottom of front hem.

Fitting notes: Drafted for woven or stable knit fabrics such as fleece and flannel. The fit is intentionally oversized, with about ten inches of ease through the bust and waist - this amounts to about a 2.5-inch extra "pinch" on each side of the body. Choose size according to desired finished garment measurements. As a best practice, sew a test garment to adjust the pattern as needed.

We love creating these free patterns for the community and we want to keep them free! In return, we hope you check out MoodFabrics.com for your next project!

Want to use one of our patterns to make a garment to sell? Our patterns are royalty-free! We just ask that you credit us with MoodSewciety.com or MoodFabrics.com in your product description.

♥ The Mood Sewciety Team

mood SEWCİETY

FOR SEWING INSTRUCTIONS:

Scan the QR code or visit
MoodSewciety.com and search
"MDF280"



1/2" seam allowances (SA's) included
unless stated otherwise.

©2021 MoodFabrics.com / MoodSewciety.com
Mass production, resale, or distribution of this
pattern in any form is strictly prohibited.

mood SEWCİETY

IN COLLABORATION WITH PaTternHack.COM



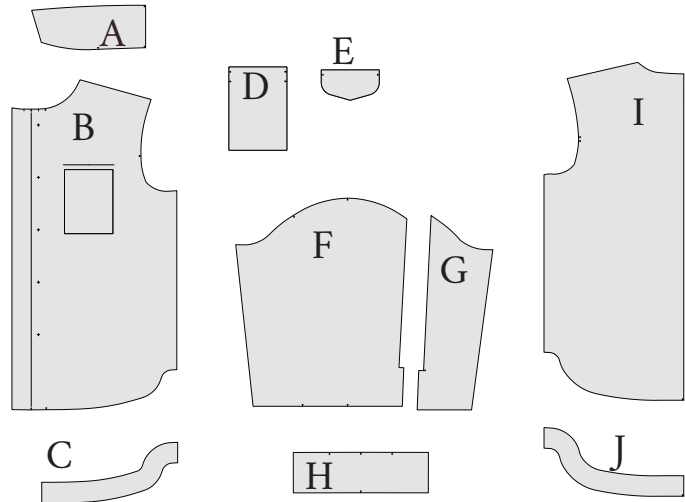
MDF280

"The Savannah Shacket"

Ladies Sizes 00 to 32

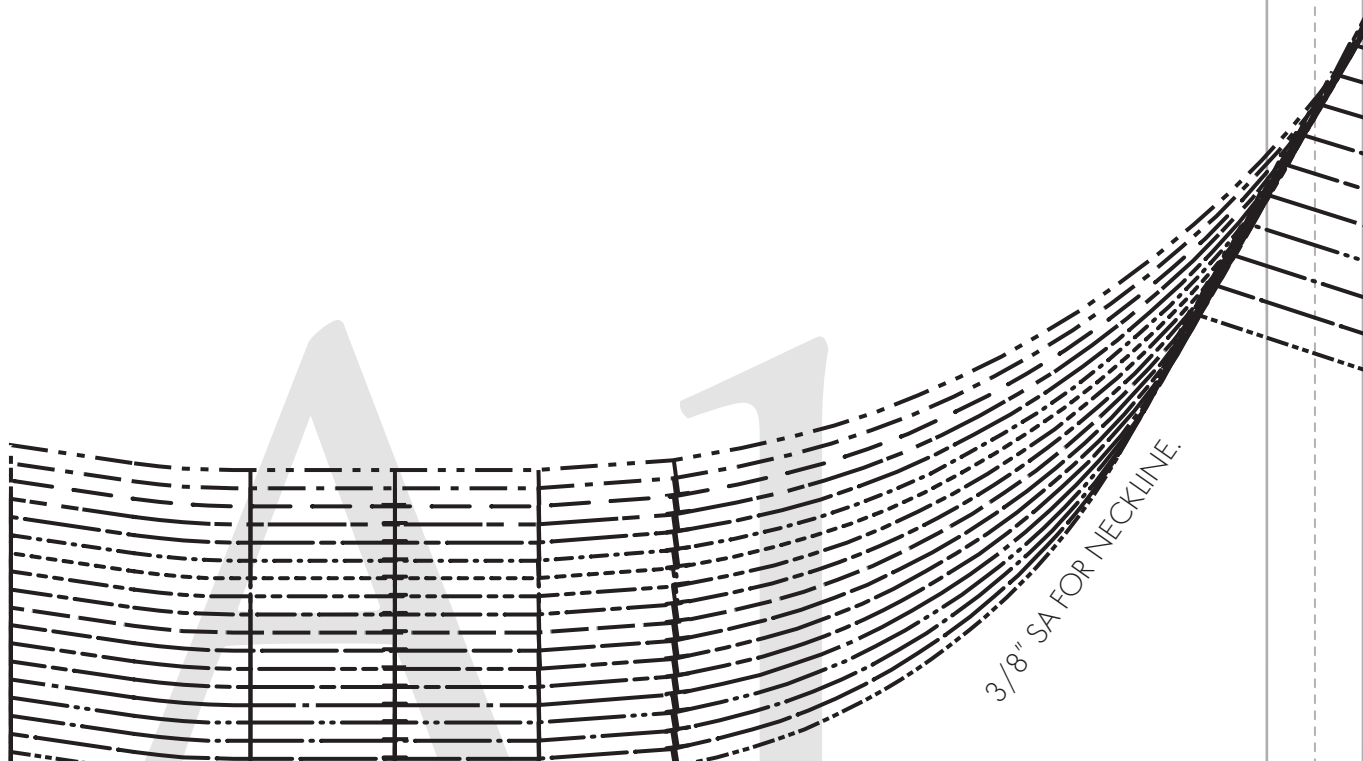
#MoodSavannahPattern

A	A - COLLAR FABRIC: CUT 2 FUSING: CUT 1 OR 2 ON FOLD
B	B - FRONT FABRIC: CUT 2 FUSING: CUT 2 (PLACKET AREA) MIRRORED PAIRS
C	C - FRONT HEM FACING FABRIC OR CONTRAST: CUT 2 MIRRORED PAIR
D	D - POCKET FABRIC: CUT 2
E	E - POCKET FLAP FABRIC: CUT 4
F	F - SLEEVE FABRIC: CUT 2 MIRRORED PAIR
G	G - BACK SLEEVE FABRIC: CUT 2 MIRRORED PAIR
H	H - CUFF FABRIC: CUT 4 FUSING: CUT 2 OR 4 MIRRORED PAIRS
I	I - BACK FABRIC: CUT 1 ON FOLD
J	J - BACK HEM FACING FABRIC OR CONTRAST: CUT 1 ON FOLD

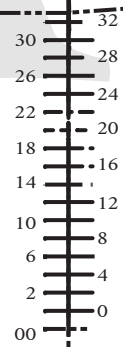


Size Line Key

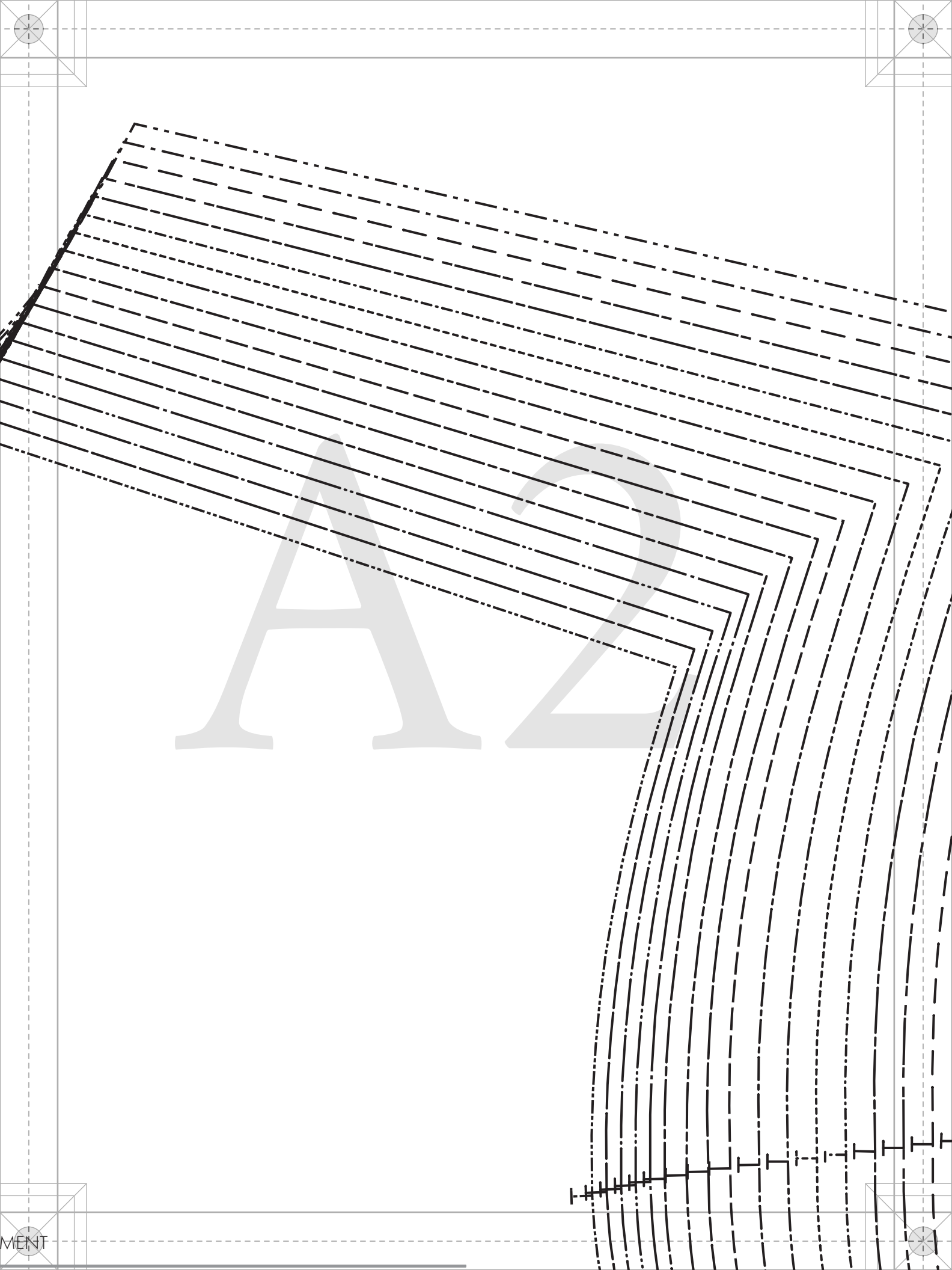
SIZE 00	-----
SIZE 0	-----
SIZE 2	-----
SIZE 4	-----
SIZE 6	-----
SIZE 8	-----
SIZE 10	-----
SIZE 12	-----
SIZE 14	-----
SIZE 16	-----
SIZE 18	-----
SIZE 20	-----
SIZE 22	-----
SIZE 24	-----
SIZE 26	-----
SIZE 28	-----
SIZE 30	-----
SIZE 32	-----

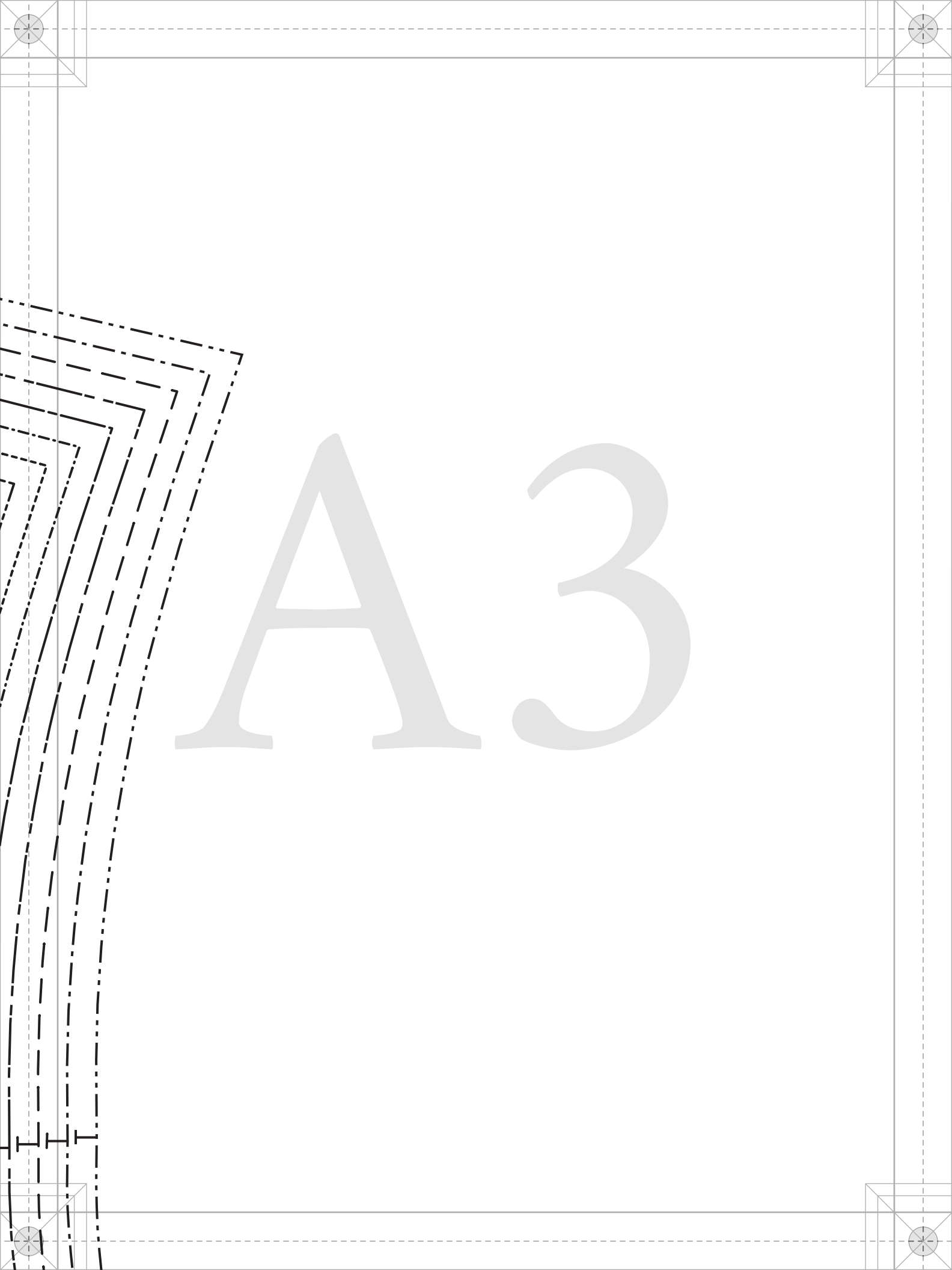


3/8" SA FOR NECKLINE.



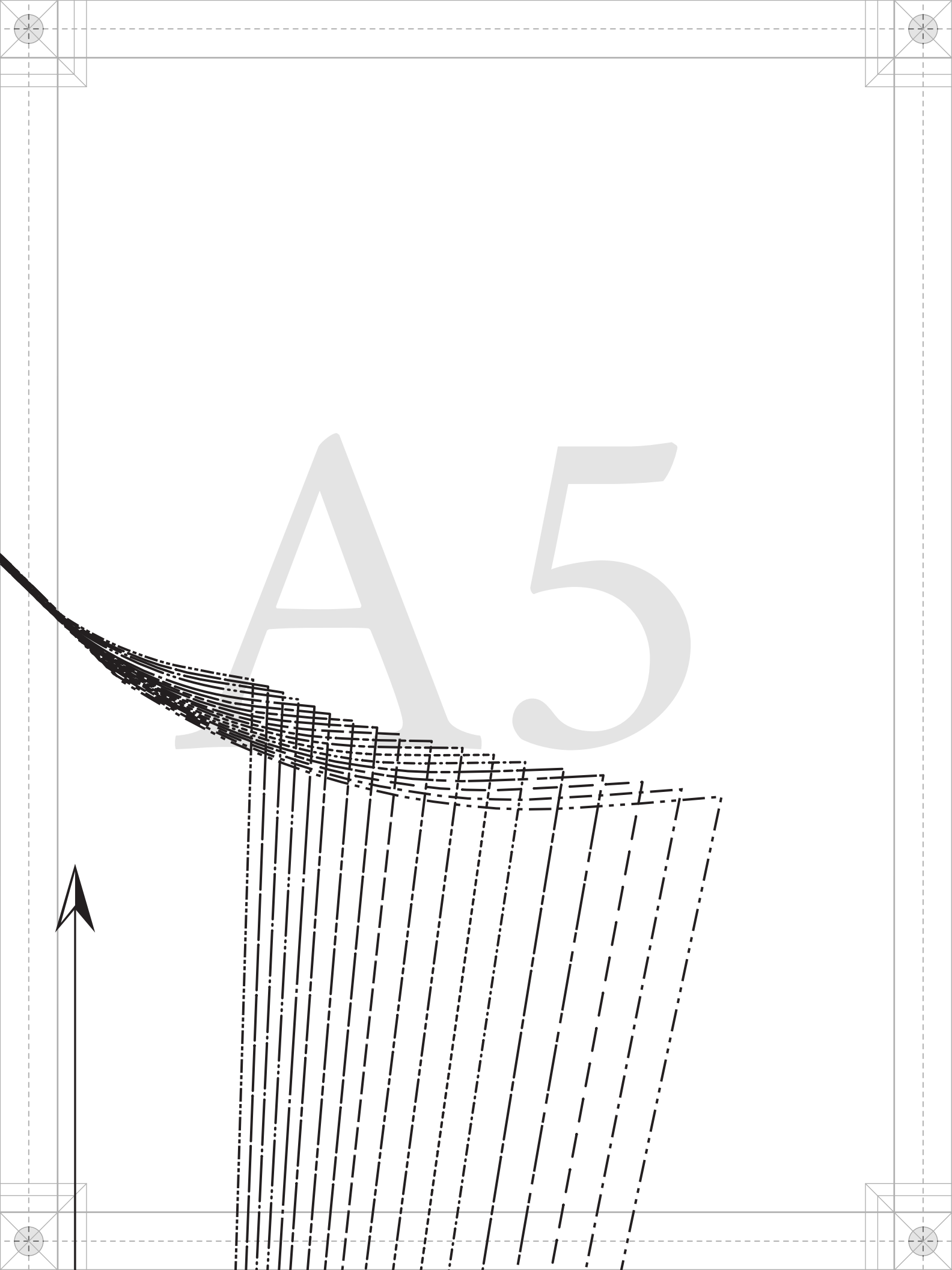
+ MARKINGS
INDICATE BUTTON
PLACEMENT AND
CENTER OF VERTICAL
BUTTONHOLES





A3

A4

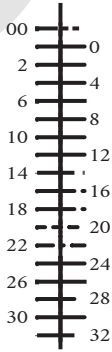


FLAP PLACEMENT

POCKET PLACEMENT

+

B1



P
D

MENT

CEMENT

B2

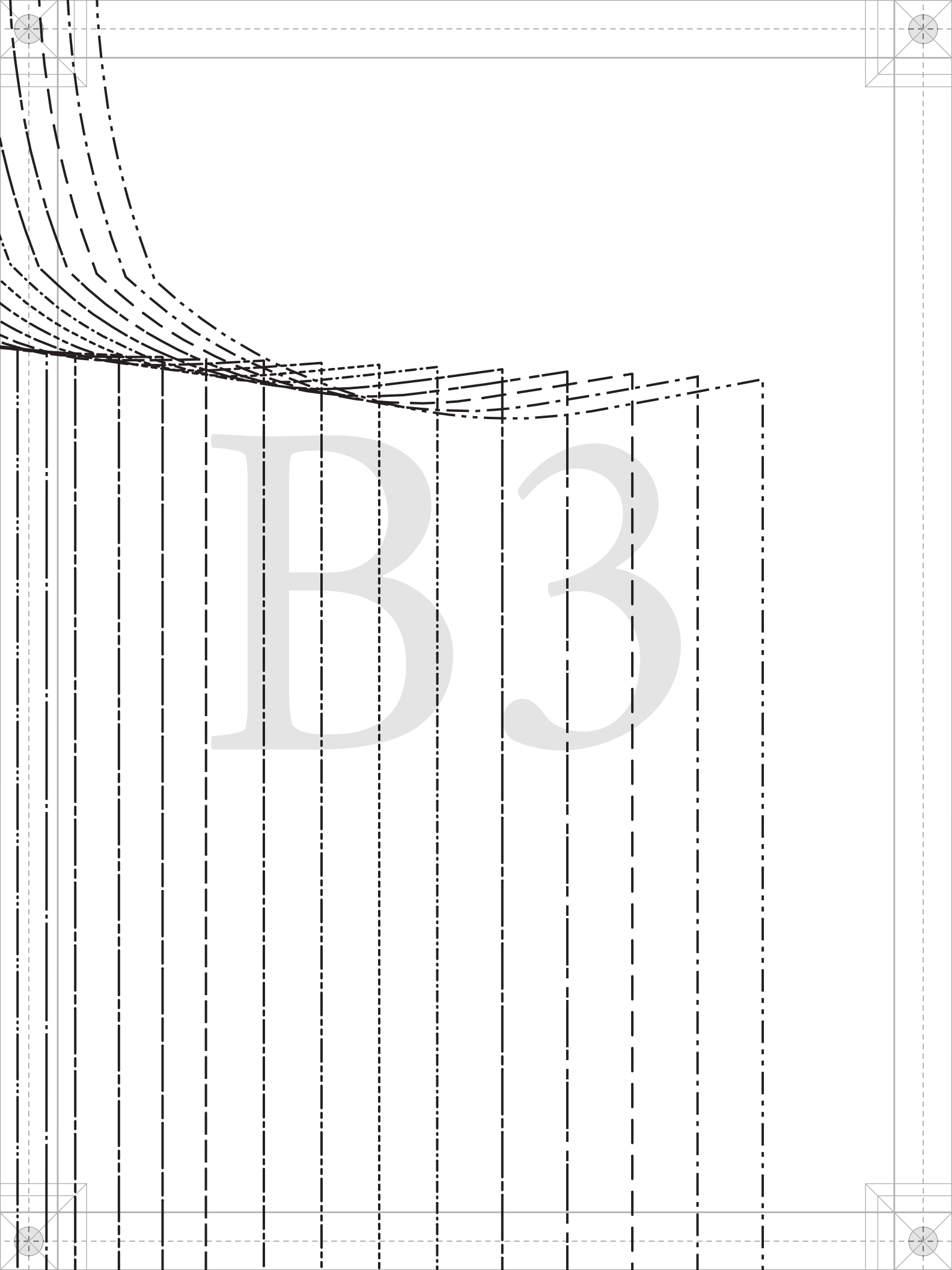
PATTERNS

BY

maud

DESIGNER FABRICS

MDF280





#MoodSavannahPattern

“The Savannah Shacket” MDF280

G - BACK SLEEVE
FABRIC: CUT 2
MIRRORED PAIR

LADIES SIZES 00 TO 32
1/2" seam allowances (SA's)
included unless stated otherwise.

DOUBLE-TURN HEM FOR SLIT

B5

GRAINLINE



#Mood

“The Sav

B

FAL

FUSING: CU

MIRI

1/
incl

oodSavannahPattern

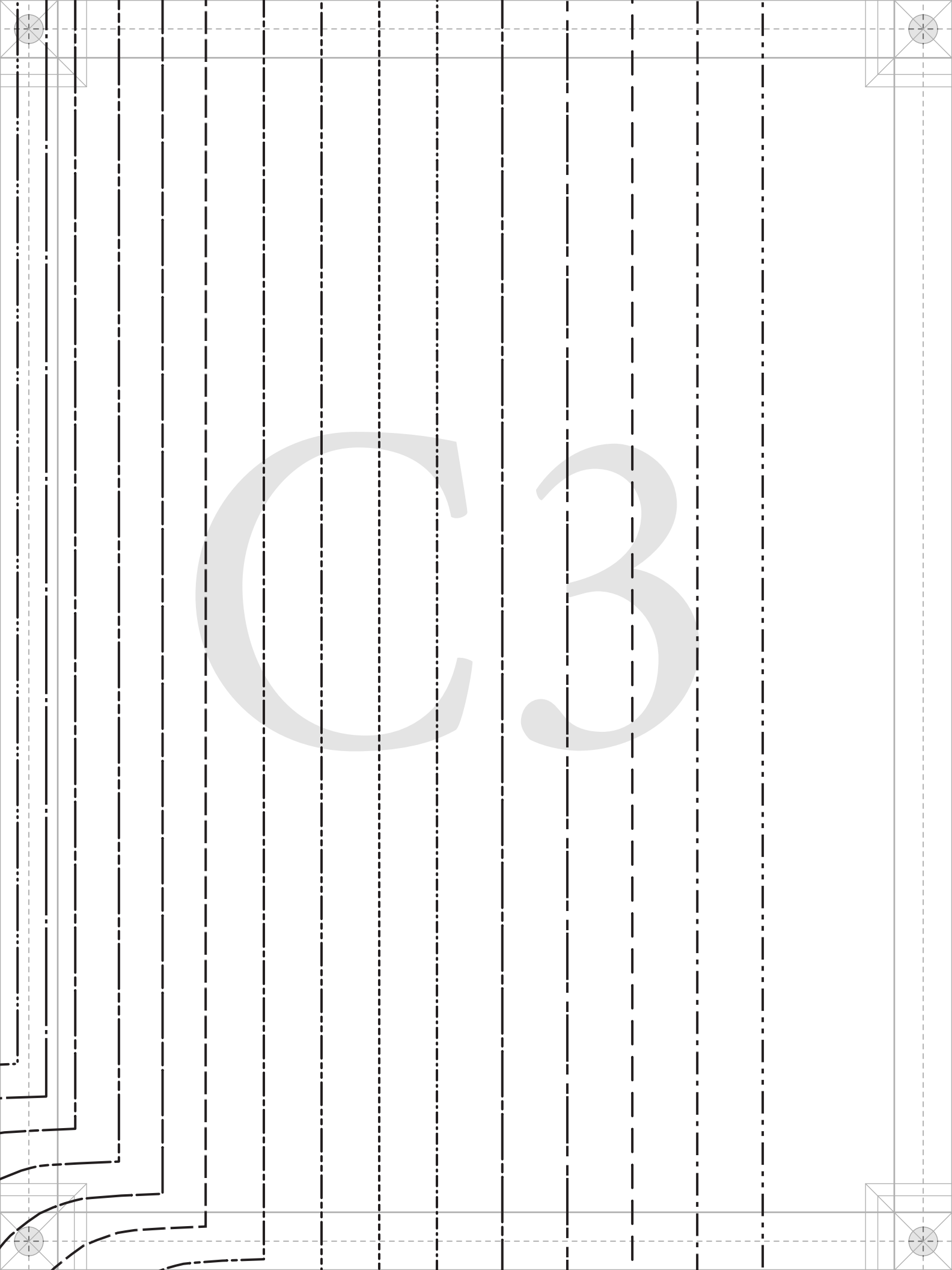
Savannah Shacket"

MDF280

B - FRONT
FABRIC: CUT 2
CUT 2 (PLACKET AREA)
MIRRORED PAIRS

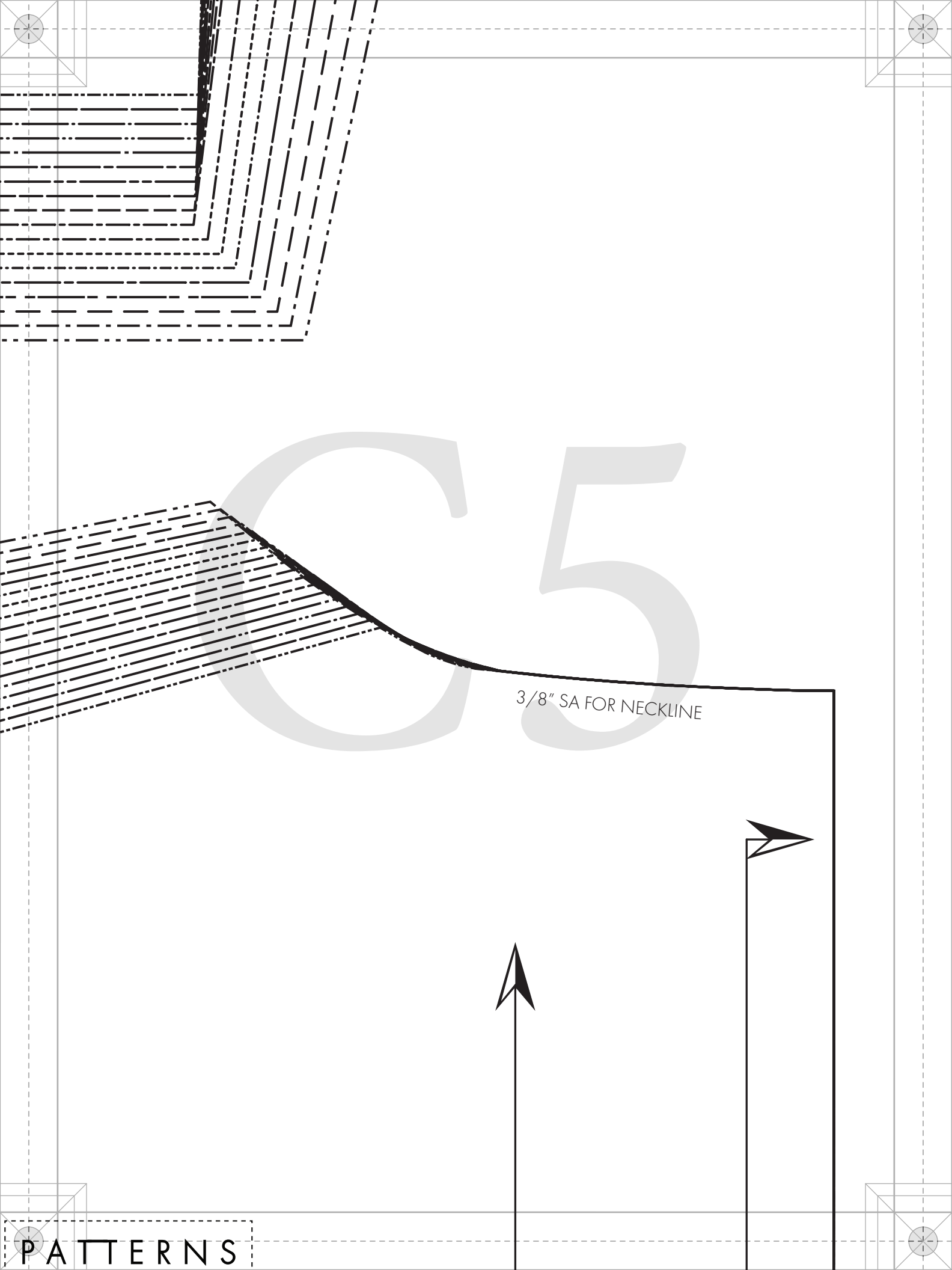
LADIES SIZES 00 TO 32
1/2" seam allowances (SA's)
included unless stated otherwise.

mood SEWCiETY
IN COLLABORATION WITH
PaTternHack.com



OR SLIT

G4



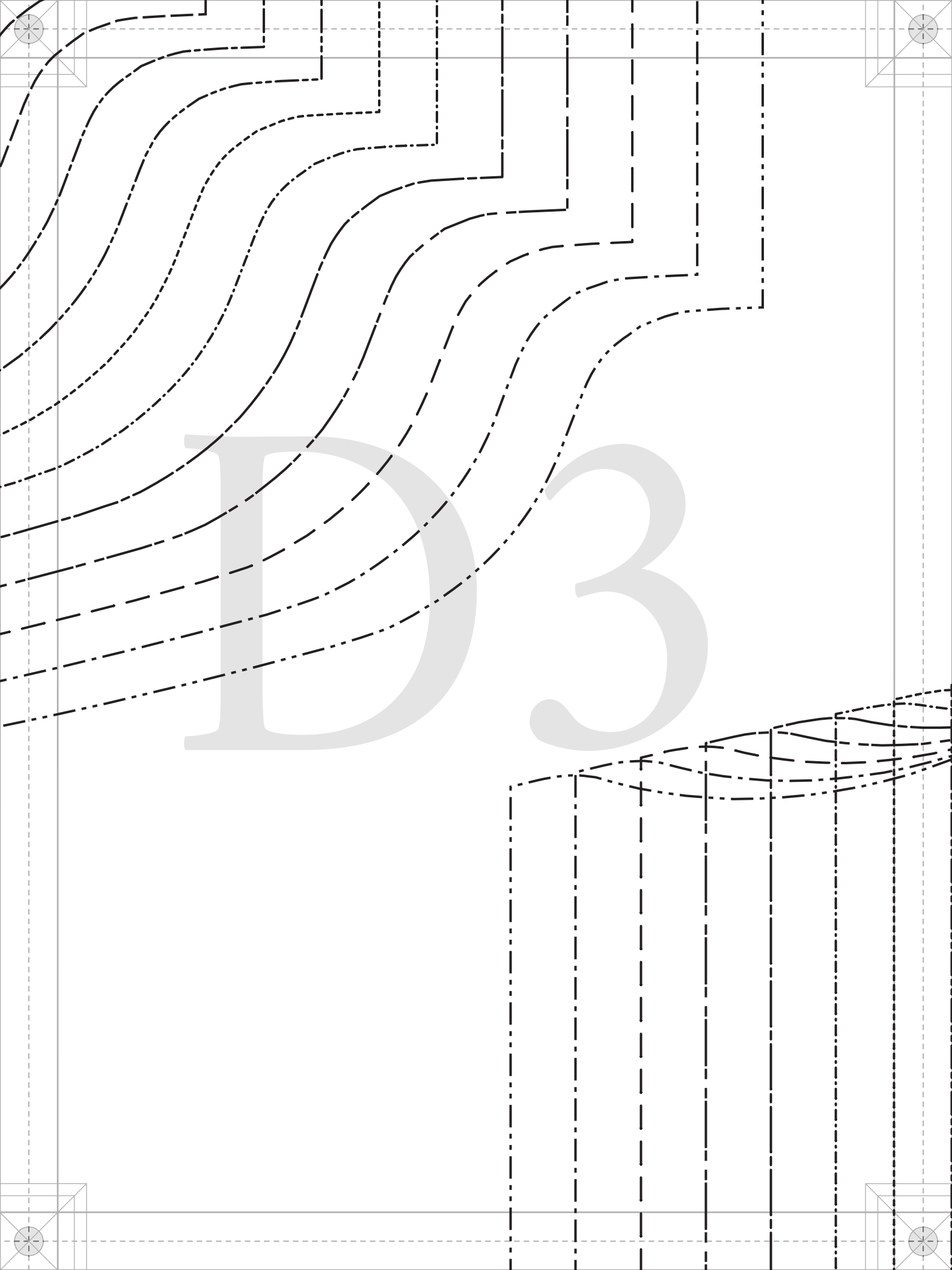
3/8" SA FOR NECKLINE

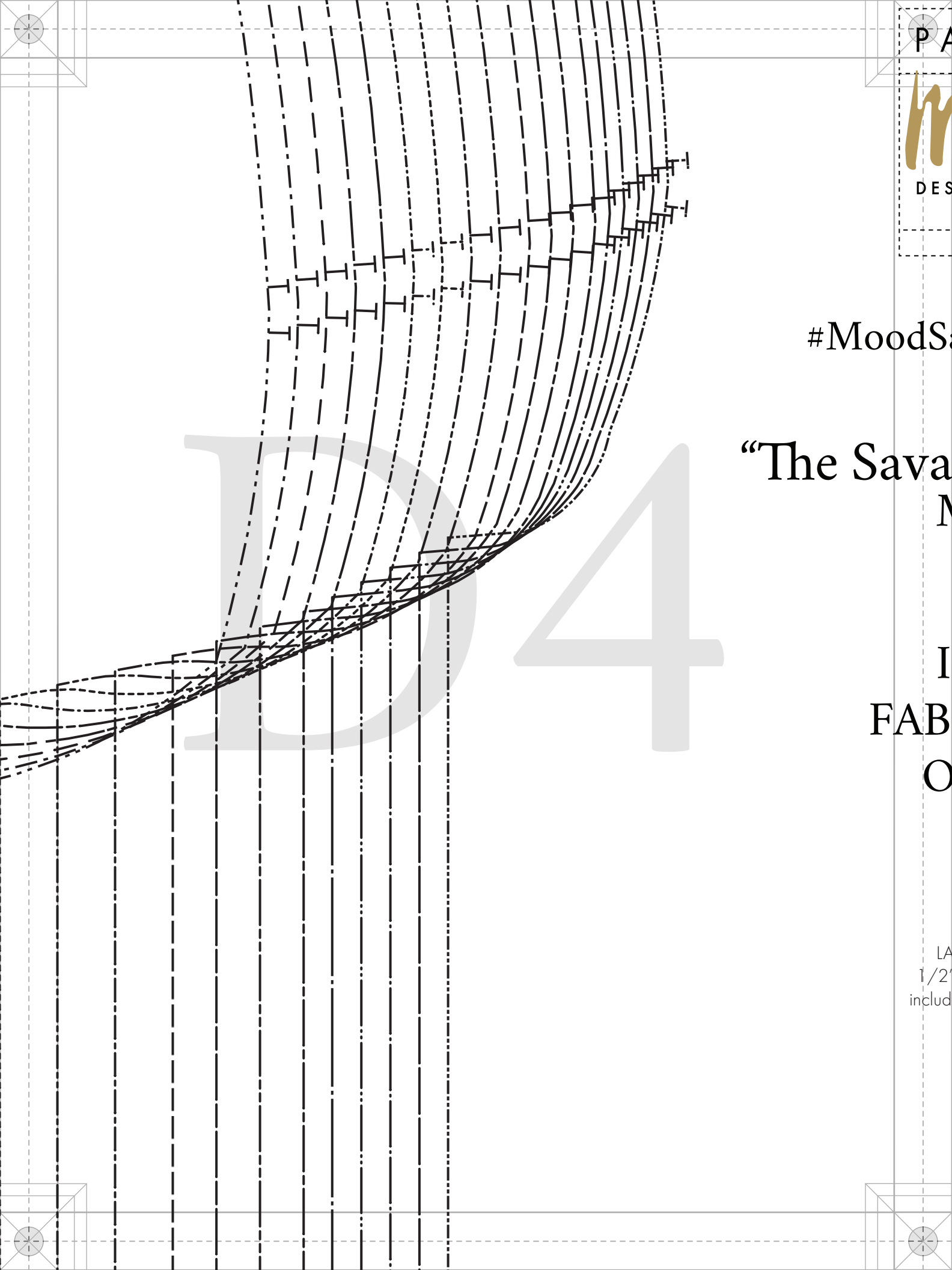
3/8" SA FOR SEAMED HEM WITH FA

DI

WITH FACING

12





P A



DES

#MoodS

“The Sava

M

I

FAB

O

LA

1/2

includ

PATTERNS

BY

mod

DESIGNER FABRICS

MDF280

odSavannahPattern

Savannah Shacket"
MDF280

I - BACK

FABRIC: CUT 1

ON FOLD

LADIES SIZES 00 TO 32

1/2" seam allowances (SA's)

included unless stated otherwise.

GRAINLINE

ON FOLD OF FABRIC

SIZE 00
SIZE 0
SIZE 2
SIZE 4
SIZE 6
SIZE 8
SIZE 10
SIZE 12
SIZE 14
SIZE 16
SIZE 18
SIZE 20
SIZE 22
SIZE 24
SIZE 26
SIZE 28
SIZE 30
SIZE 32

1E1

“The Savv



#MoodSavannahPattern

“The Savannah Shacket” MDF280

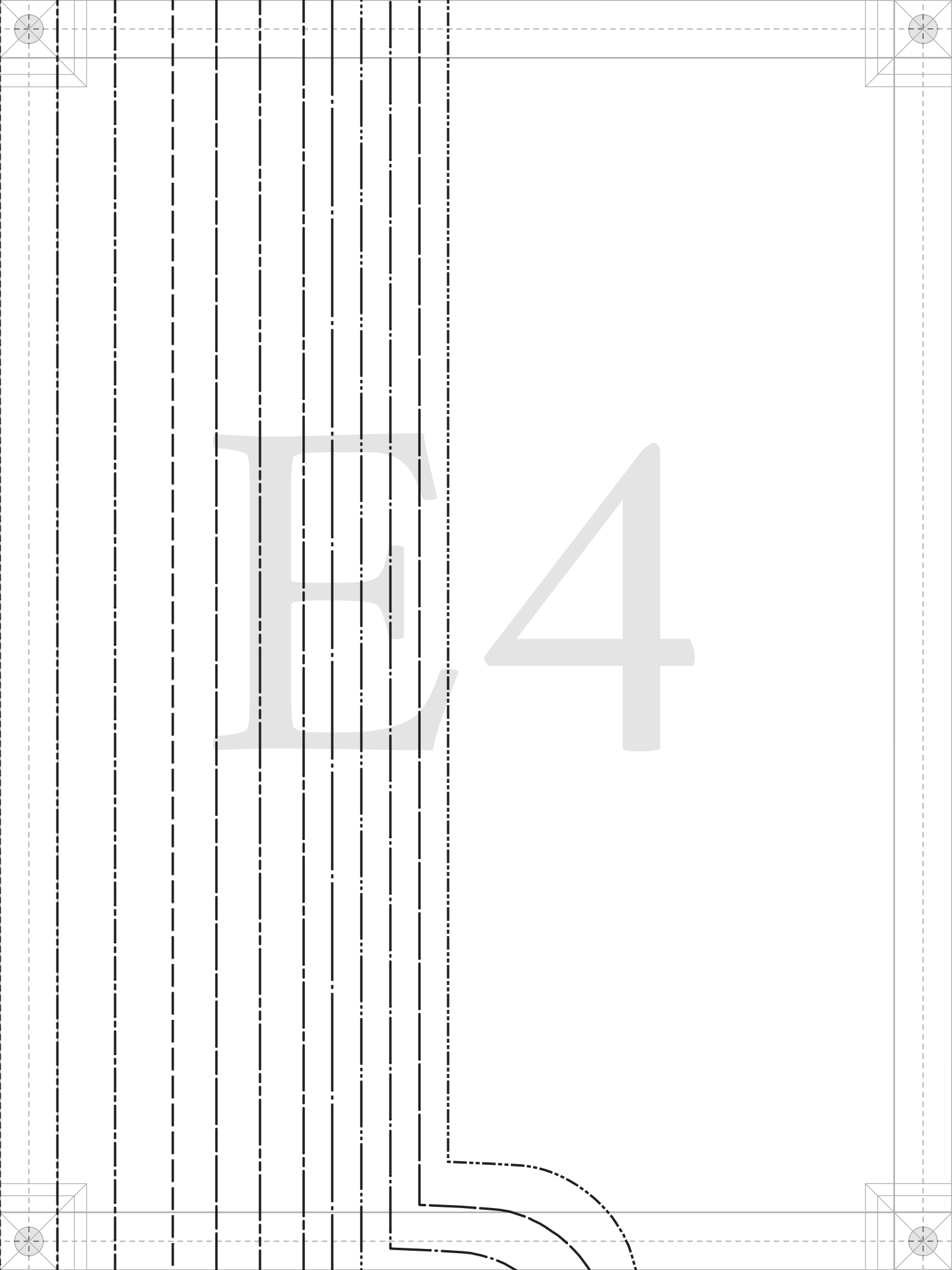
D - POCKET
FABRIC: CUT 2

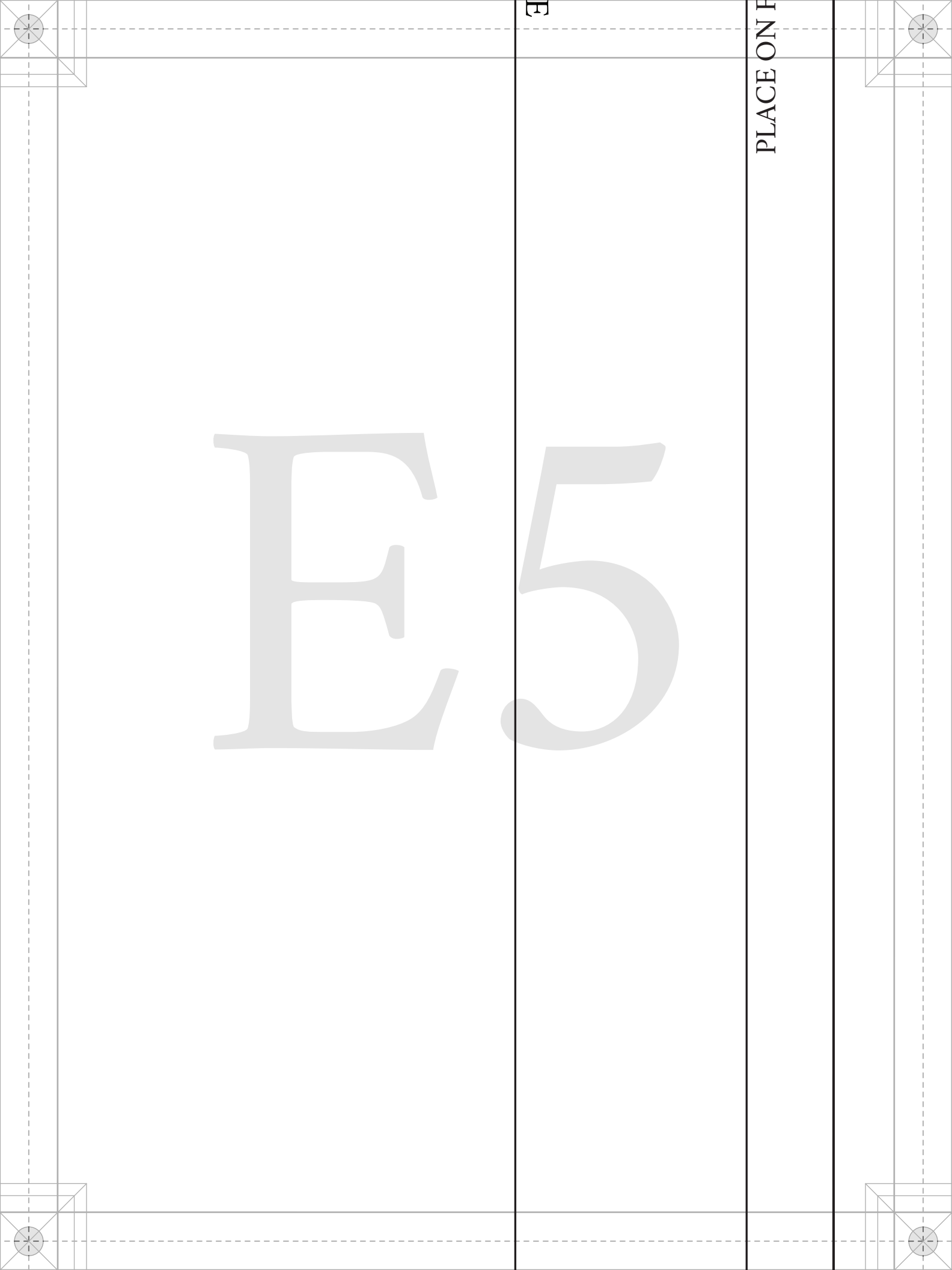
LADIES SIZES 00 TO 32
1/2" seam allowances (SA's)
included unless stated otherwise.

TOP EDGE OF POCKET

GRAINLINE

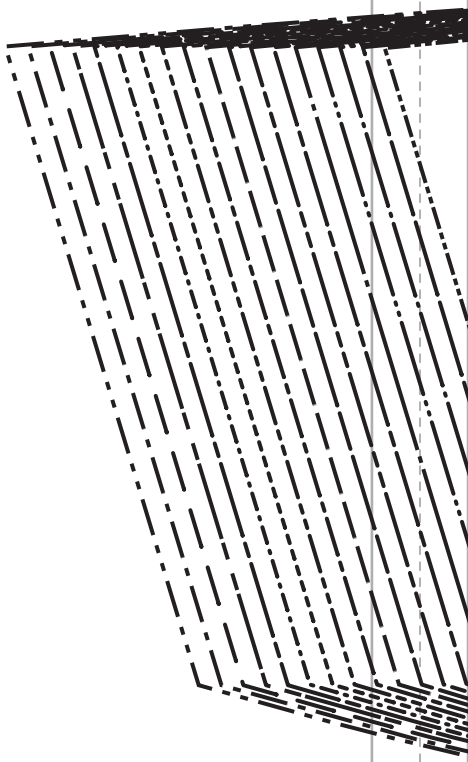
E3





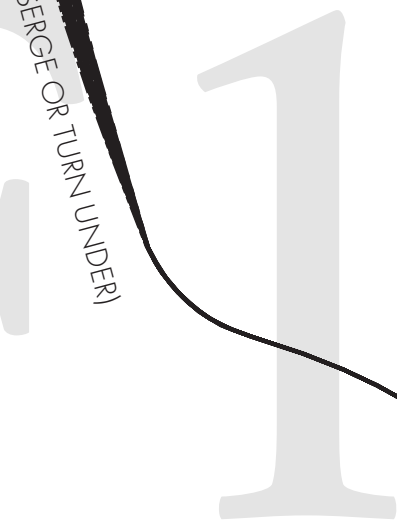
PLACE ON F

E



1/2" SA AT SIDE SEAM

GRAINLINE



1/4" SA FOR UPPER EDGE (SERGE OR TURN UNDER)

C - FRONT HEM FACING
FABRIC OR CONTRAST: CUT 2
MIRRORED PAIR

3/8" SA FOR LOWER EDGE

PATTERNS
BY
Wood
DESIGNER FABRICS
- MDF280 -

e Savannah Shacket"
MDF280

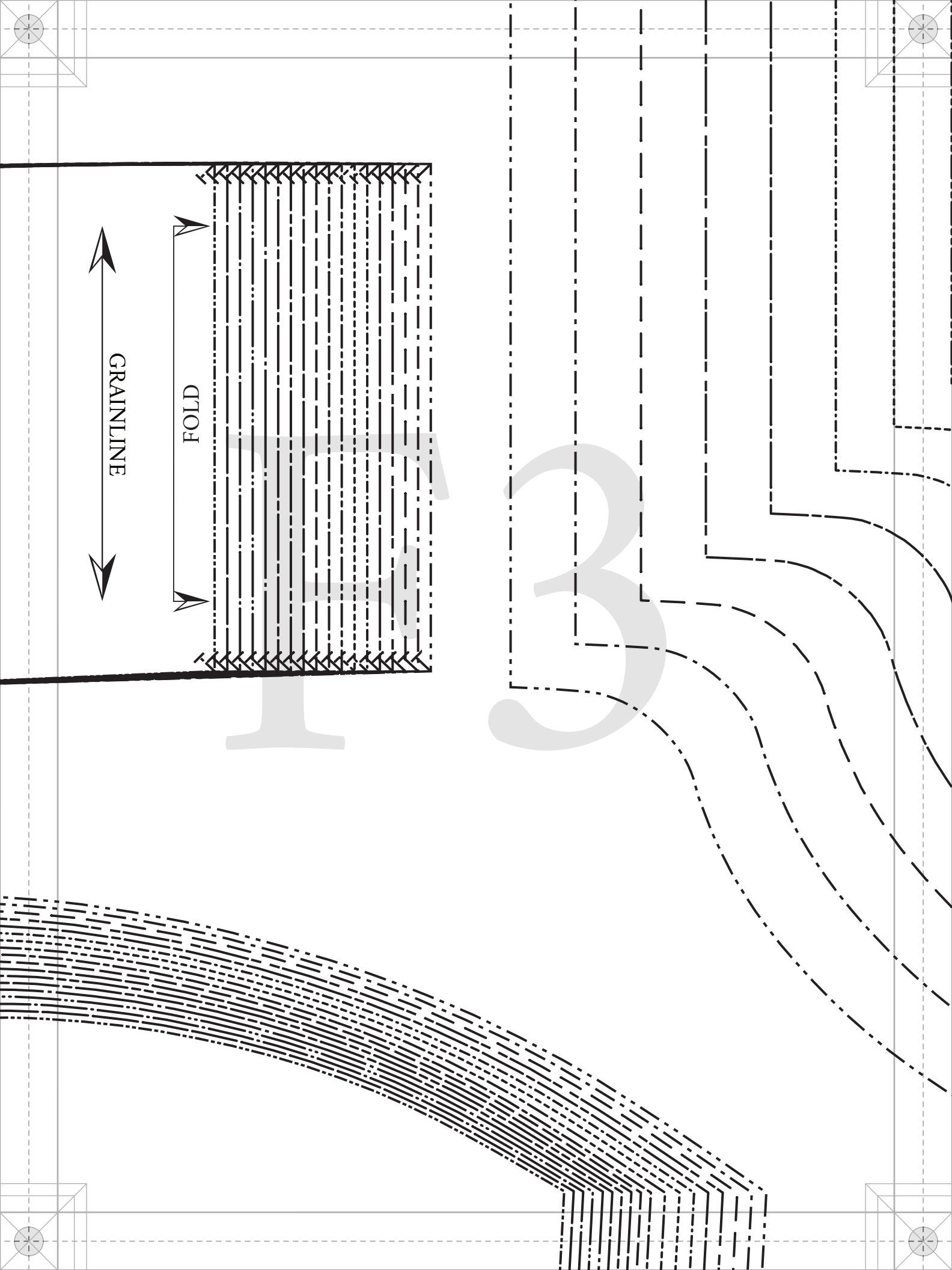


#MoodSavannahPattern

“The Savannah Shacket” MDF280

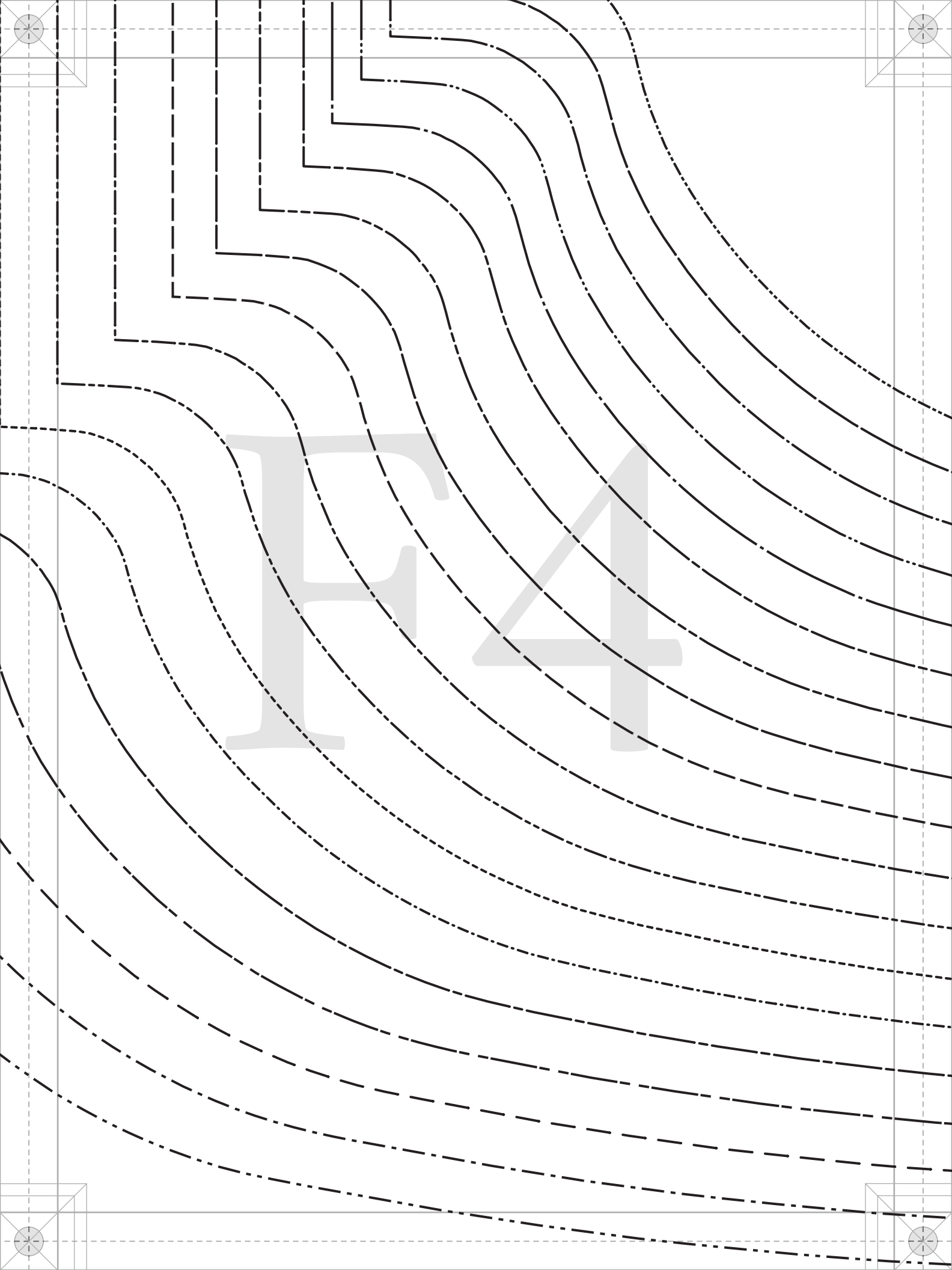
A - COLLAR
FABRIC: CUT 2
FUSING: CUT 1 OR 2
ON FOLD

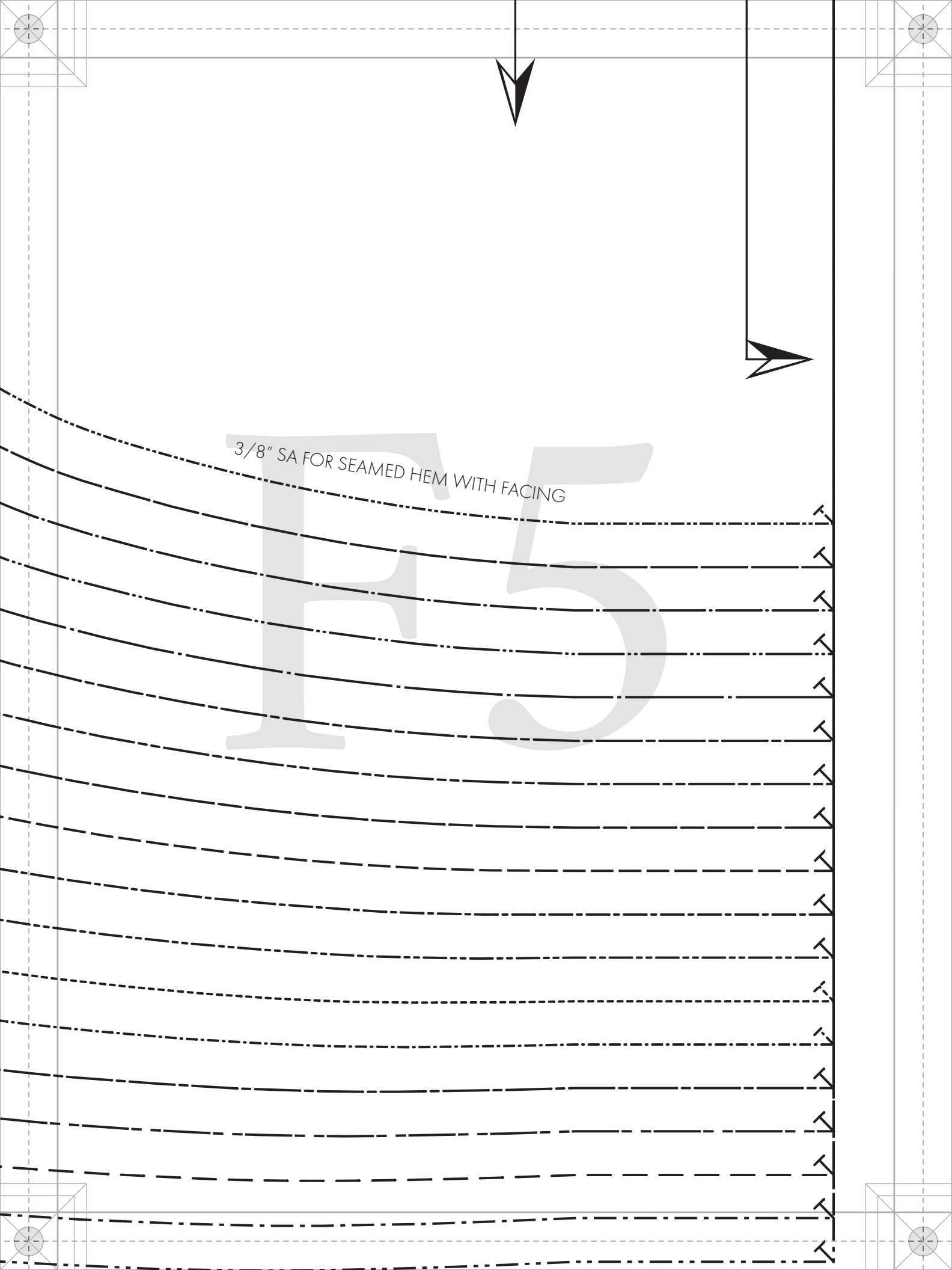
LADIES SIZES 00 TO 32
3/8" seam allowances (SA's)
for this piece.



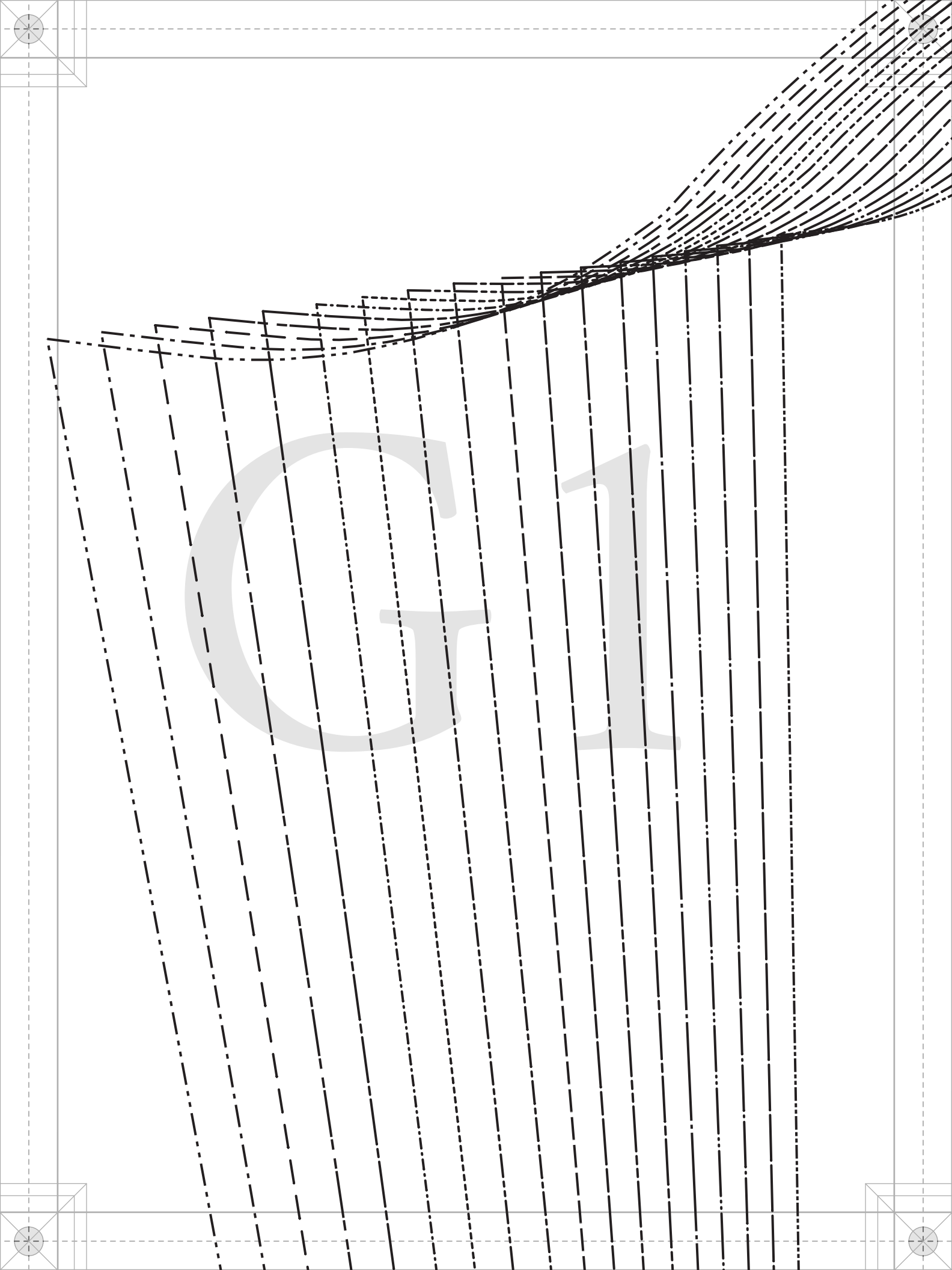
GRAINLINE

FOLD





3/8" SA FOR SEAMED HEM WITH FACING





#MoodSavannahPattern

“The Savannah Shacket” MDF280

F - SLEEVE
FABRIC: CUT 2
MIRRORED PAIR

GRAINLINE



Size Line Key

SIZE 00	
SIZE 0	
SIZE 2	
SIZE 4	
SIZE 6	
SIZE 8	
SIZE 10	
SIZE 12	
SIZE 14	
SIZE 16	
SIZE 18	
SIZE 20	
SIZE 22	
SIZE 24	
SIZE 26	
SIZE 28	
SIZE 30	
SIZE 32	

1/2" SA AT SIDE SEAM

GRAINLINE

"The Savannah Shacklet"
MDF280



1/4" SA FOR UPPER EDGE (SERGE OR TURN UNDER)
J - BACK HEM FACING
FABRIC OR CONTRAST: CUT 1
ON FOLD

3/8" SA FOR LOWER EDGE



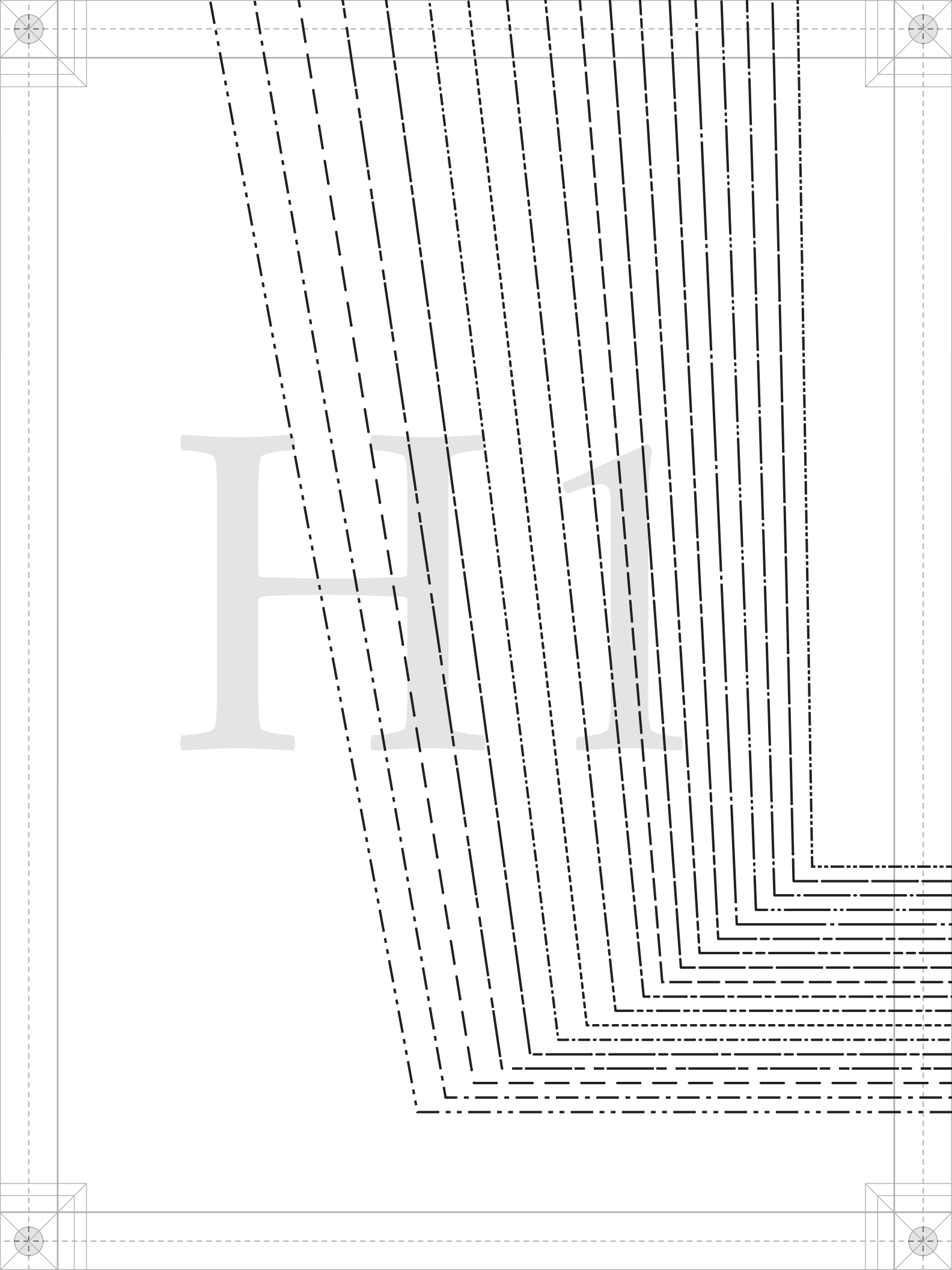
#MoodSavannahPattern

“The Savannah Shacklet”
MDF280

H - CUFF
FABRIC: CUT
FUSING: CUT 2
MIRRORED PA

LADIES SIZES 00 TO
1/2" seam allowances
included unless stated otherwise





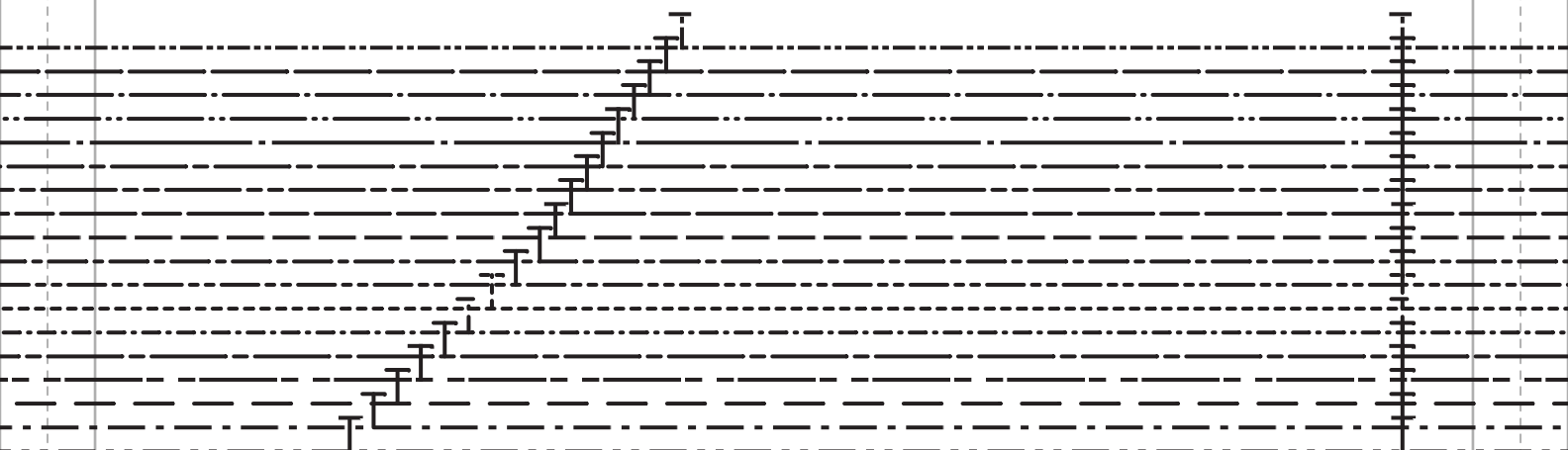
LADIES SIZES 00 TO 32
1/2" seam allowances (SA's)
included unless stated otherwise.

mood SEWCİETY

IN COLLABORATION WITH

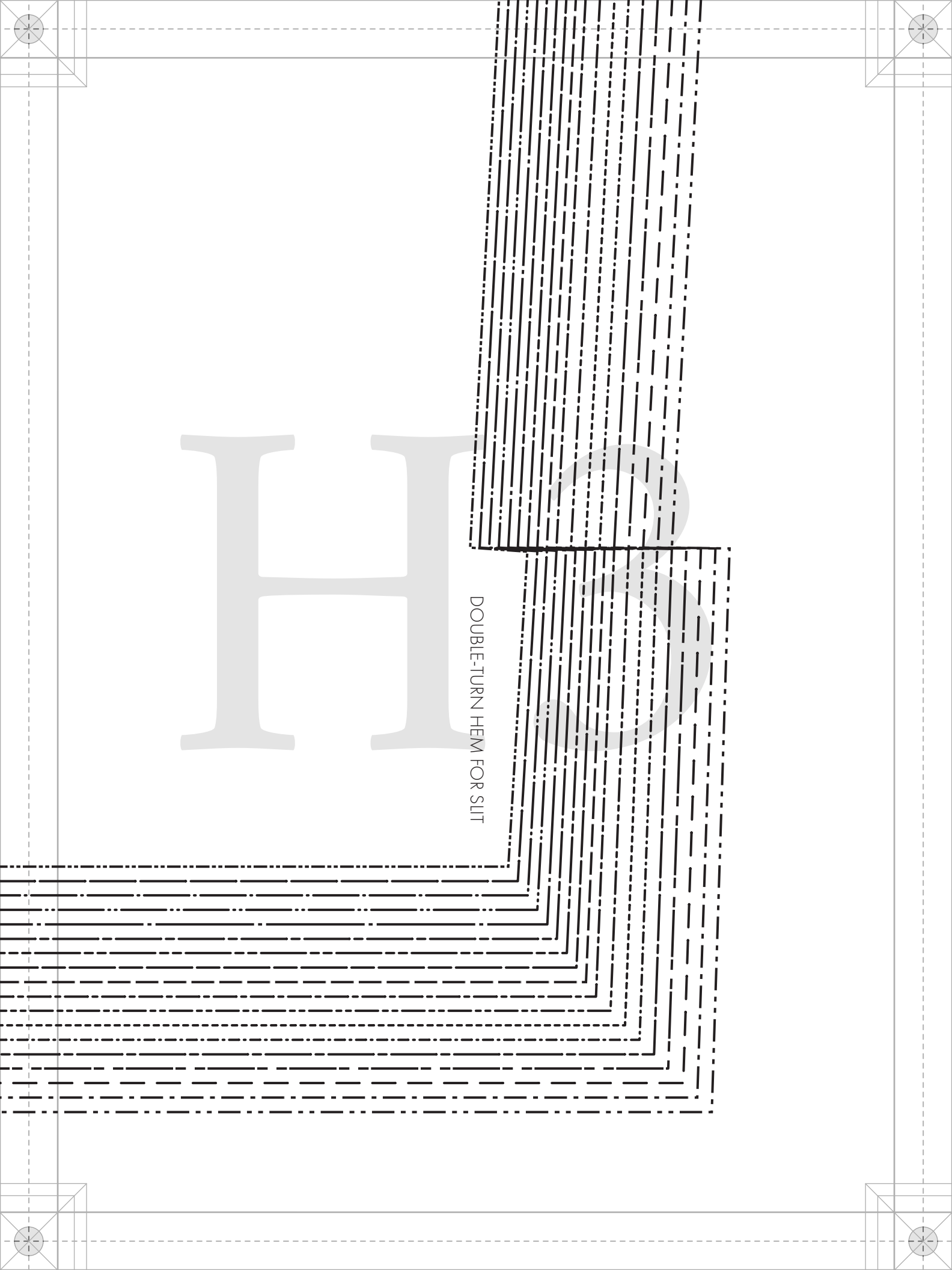
PaTternHack.com

H2



H

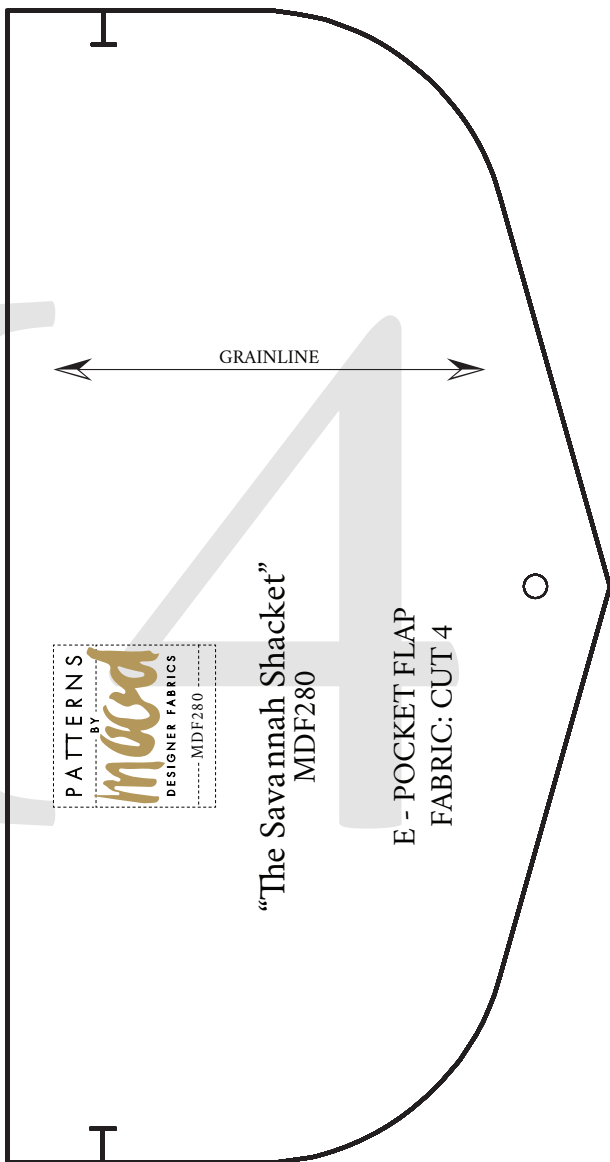
DOUBLE-TURN HEM FOR SLIT



POWER EDGE

UNDER)

FOLD	SIZE 00
	SIZE 0
	SIZE 2
	SIZE 4
	SIZE 6
	SIZE 8
	SIZE 10
	SIZE 12
	SIZE 14
	SIZE 16
	SIZE 18
	SIZE 20
	SIZE 22
	SIZE 24
	SIZE 26
	SIZE 28
	SIZE 30
	SIZE 32



PATTERNS
BY
mood
DESIGNER FABRICS
MDF280

UFF
CUT 4
UT 2 OR 4
ED PAIRS
\$ 00 TO 32
ances (SA's)
ated otherwise.

GRAINLINE

